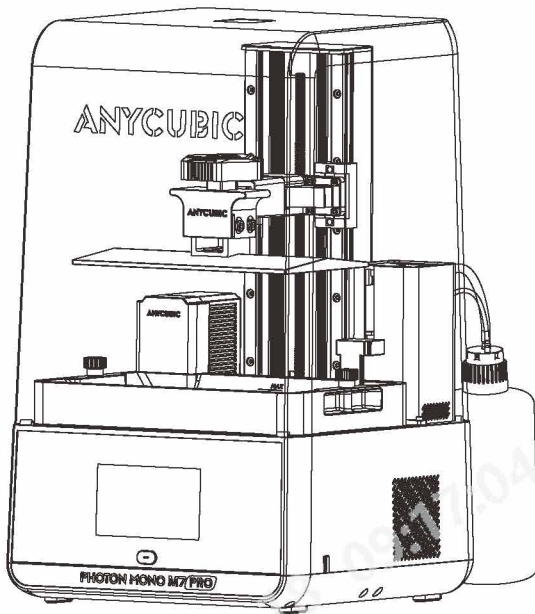




Photon Mono M7 Pro

Installation and Usage Instructions



Content

01 Introduction 1

02 Preparations 3

Assembly 3

Accessories Installations 6

03 File Upload 7

USB 7

Cloud 8

04 Resin Preparations 11

05 Print Test 13

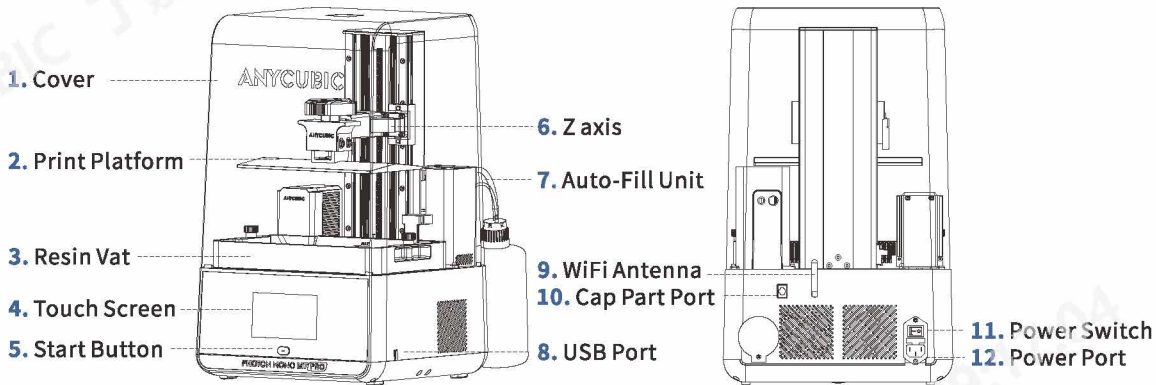
06 Resin Recycling 15

07 Attention 16

01

Introduction

Overview



In the Box



Photon Mono
M7 Pro



Print
Platform*1



Resin Vat*1



Manual*1



Screen
Protector Kit



Leveling Paper



Auto-fill Unit



Air Purifier*1



Protective
Equipment



Funnels*5



Scrapers*2



Hex Key Set



USB Drive*1



WiFi Antenna



Power Cord

Product Parameters

Technical Specifications

LCD screen	10.1-inch 14K
Light source	COB light
XY Resolution	13312* 5120
Leveling Method	No-Leveling Required
Touch Screen	5-inch Capacitive Screen

Physical Dimensions

Product Dimension	310 mm(L) *315 mm(W) *520 mm(H)
Build Volume	223.64 mm(L) *126.48mm(W) *230 mm(H)
Weight	12.8 kg

WiFi

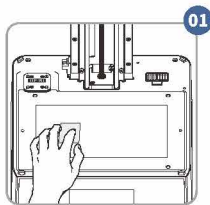
Frequency Range	2.4 G (2.400~2.4835 GHz)
Work Mode	AP, STA, AP+STA mode

02 Preparations

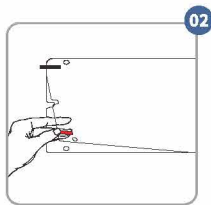
For the first use, please follow the instruction to finish the preparation including assembly and accessories installation.

Assembly

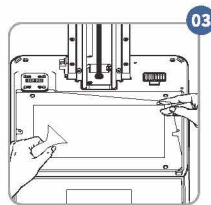
1. Unbox, and take out the machine and its accessories.
2. Install the screen protector.



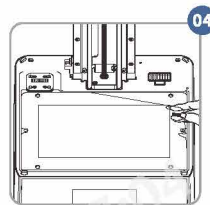
Peel off the protective film
Clean the LCD screen



Peel off the film ①

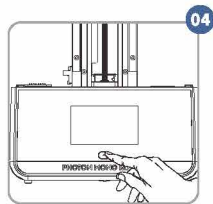
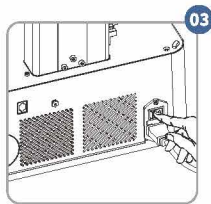
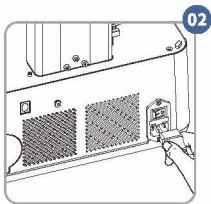
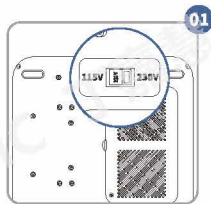


Align the locating holes
Squeeze out air bubbles



Peel off the film ②

3. Check the input mode of power voltage first. The one shown as "230" is suitable for 200V-240V; and the other one shown as "115" is suitable for 100V-120V. Then, connect to the power adapter, flip the rocket switch to ON position and long press the start button.

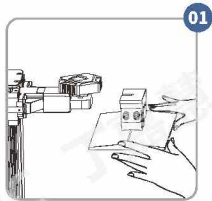


Voltage switch is located on the underside of printer

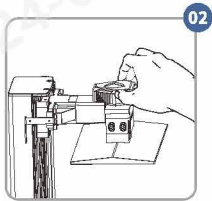
4. Set the system language and choose "Global" server. Then, complete the on-screen setup steps.



5. Install the print platform.

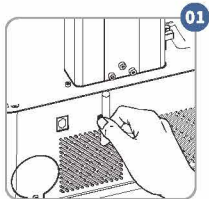


Push the platform onto the platform carrier



Tighten the knob

6. Install the WiFi antenna.

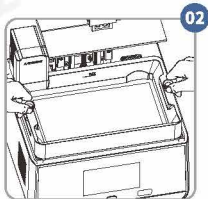


Accessories Installation

1. Install the resin vat.



Put resin vat with its feet stuck in locating holes

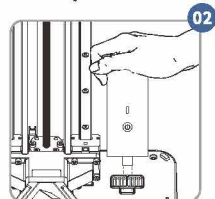


Tighten the two knobs

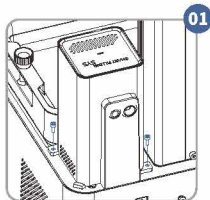
2. Install the air purifier (optional).



Remove the package of carbon



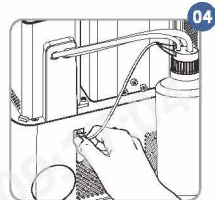
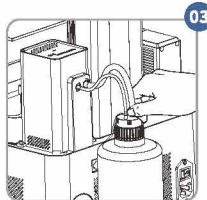
3. Install the Auto-fill unit (optional).



Secure the main module



Use Anycubic 1kg resin bottle



03

File Upload

USB

- 1. Use Anycubic Photon Workshop software to process the 3D model file. The installer and instructions is saved in the USB drive.**
- 2. Slice the model. When you set the parameters in the software, there are groups of parameter which can be apply to the printing with different needs.**
- 3. Save the sliced file to USB drive. Then, insert the USB drive to the printer.**

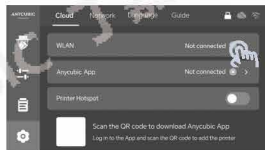
Notice for USB drive:

- It is recommended that use the USB drive we provide. If you are using your own USB drive, please ensure that it is formatted to FAT/FAT 32 and has a memory size of less than 64G.**
- To ensure proper file reading, please put print files in the root directory of USB drive.**

Cloud

Please connect the printer to Anycubic App first for remote printing.

1. Connect to the network.



2. Please search “Anycubic” in App Store or Goolge Play, or scan the QR code on the printer, to download Anycubic App. Then, sign up and sign in.



3. Add a printer in Anycubic App.

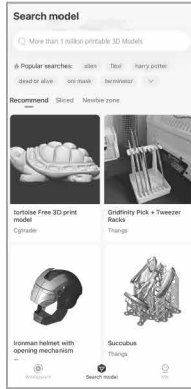


Scan this QR code
to add the printer

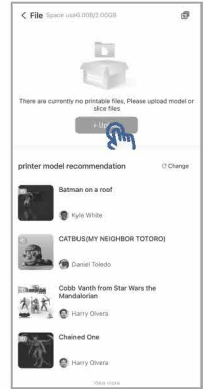
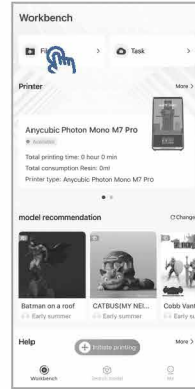
4. Printer is added successfully.



5. Search model or upload the model files.



Search model

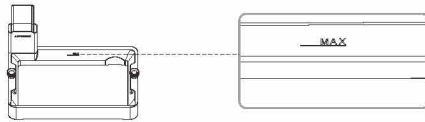


Upload the model files

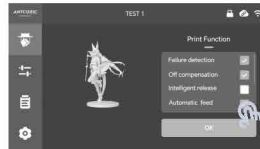
04 Resin Preparations

*The release film on the resin vat is consumable. Please pay attention to the status of release film on the touch screen and replace the film timely. It is suggested to check the release film carefully before and after every printing. If the film is broken, replace it immediately to avoid further damage to machine.

1. Make sure to wear a mask and gloves (to avoid direct skin contact with the resin), slowly pour the resin into the vat and make sure it is within the vat's maximum scale.



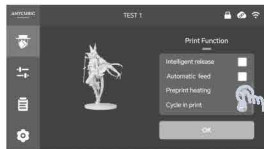
2. Enable the automatic feeding(optional). Please install the auto-fill unit before using.



3. Turn on air purifier(optional).



4. When the ambient temperature falls below 20 °C, it may cause the detachment of printed bottom or partial loss of printed objects. You can enhance the printing effect by enabling preprint heating. Material circulation is enabled by default during the heating process.



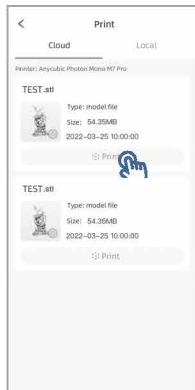
Attention: When the resin vat heats up for a long time, its surface temperature becomes high. Never touch the resin vat without protection after heating.

5. Put on the cover.

05 Print Test

There are two methods to print the file.

- Remote print



• Print USB drive file



Notice:

- 1. High speed mode (sliced file) requires high speed resin!**
Otherwise, the print may fail.
- 2. The printer has been designed requiring no leveling for the first use.**
However, please re-level the printer in the following scenarios:
 - The print platform has been fallen to the ground.
 - Changing new print platform or LCD screen.
 - The printed object sticks to the resin vat instead of the print platform.

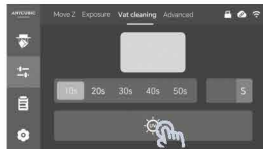


Scan the QR code
for the leveling tutorial

06

Resin Recycling

1. When the printing is finished, recycle the remaining resin by “Unload”.
2. The resin may be cured partially in the vat if the print fails.
Please remove the residue by Vat Cleaning to avoid the damage to the LCD screen and the printer.



Remove resin sheet
by plastic scraper

3. If there is any remaining resin, please pour it out through one of the front spouts of the vat and filter it with a funnel.

Attention: DO NOT pour out the resin through the back side of the vat to avoid the damage to the resin vat.

4. If you do not use the resin for over two days, store it in an airtight container away from light.



07 Attention

- 1. In case of emergency, please immediately cut off the power of 3D printer and then contact our technical support.**
- 2. UV light is harmful to the eyes; please avoid direct contact. When operating, wear protective equipment such as anti-UV goggles and gloves.**
- 3. Be cautious when using the scraper, and make sure to orient the sharp parts of printer and tools away from people.**
- 4. Never vigorously shake or turn over the resin bottle when the cap part is installed. If the inside of the cap is stained by resin, please immediately clean it to avoid malfunction or damage to auto-fill unit.**
- 5. Do not immerse the smart resin vat in water, alcohol, or other cleaning solvent to avoid the damage.**
- 6. It is suggested to replace the peristaltic pump pipe after 1000 hours of printing.**
- 7. Keep Anycubic 3D printer and its accessories out of the reach of children.**
- 8. Do not expose Anycubic 3D printer to water or rain.**
- 9. Do not disassemble Anycubic 3D printer, please contact technical support if you have any questions.**

Thank you for purchasing Anycubic products! For detailed user manual and software installation, please refer to user manual from the USB drive or visit www.anycubic.com and download. If you need any help, please contact technical support at support.anycubic.com/en.

Radio interference

WARNING: This device complies with Part 15 of the FCC Rules. Operation is subject to the following two conditions: (1) This device may not cause harmful interference, and (2) this device must accept any interference received, including interference that may cause undesired operation.

CAUTION: Changes or modifications not expressly approved by the party responsible for compliance could void the user's authority to operate the equipment.

NOTE: This equipment has been tested and found to comply with the limits for a Class B digital device, pursuant to Part 15 of the FCC Rules. These limits are designed to provide reasonable protection against harmful interference in a residential installation. This equipment generates, uses, and can radiate radio frequency energy. If not installed and used in accordance with the instructions, it may cause harmful interference to radio communications. However, there is no guarantee that interference will not occur in a particular installation. If this equipment does cause harmful interference to radio or television reception, which can be determined by turning the equipment off and on, the user is encouraged to try to correct the interference by one more of the following measures:

- Reorient or relocate the receiving antenna.
- Increase the distance between the equipment and receiver.
- Connect the equipment to an outlet on a circuit different from that to which the receiver is connected.
- Consult the dealer or an experienced radio/TV technician for help.

To maintain compliance with FCC's RF Exposure guidelines, this equipment should be installed and operated with minimum distance between 20cm the radiator your body: Use only the supplied antenna.



Name: APEX CE SPECIALISTS LIMITED
Add: 89 Princess Street, Manchester, M1 4HT, UK
Contact: Wells
Tel: + 441616371080
E-mail: info@apex-ce.com



Name: Apex CE Specialists GmbH
Add: Habichtweg 1 41468 Neuss Germany
Contact: Wells Yan
Tel: +353212066339
E-mail: info@apex-ce.com



FCC-ID: 2AXYK-M7PRO
CMIIT ID: 24J44VY86029



214-240094



M02010047