

SPECIFICATIONFORAPPROVAL

Customer:

Customer's part number:

Product description: 2.4G Antenna

**Uni Link's part number: MS-2.4G-TP1**

Issue Date: 20012-12-30

**Note: 2400-2500MHz**

**Application and Features**

Applications :

- 1: 2.4G ISM band applications
- 2: ISM, RFID applications
- 3: Remote antenna location for better reception

Features :

- 1: Compact size
- 2: Mounting foam tape on back
- 3: Indoor or outdoor use

## 1、SPECIFICATIONS

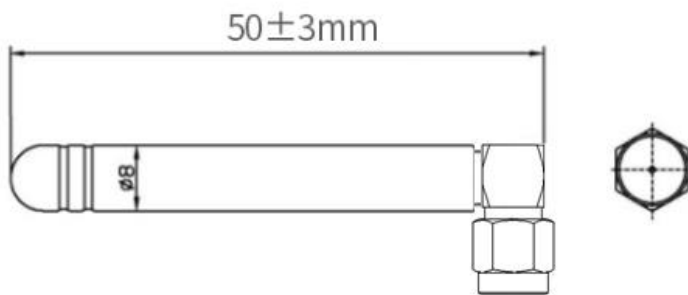
Electrical Specifications	
Frequency Range (MHz)	2400-2500
Input Impedance ( $\Omega$ )	50
V.S.W.R	$\leq 1.5$
Gain (dBi)	2.99
Mechanical Specifications	
Antenna Length (mm)	50*8
Radome Color	Black

## 2、 PICTURE

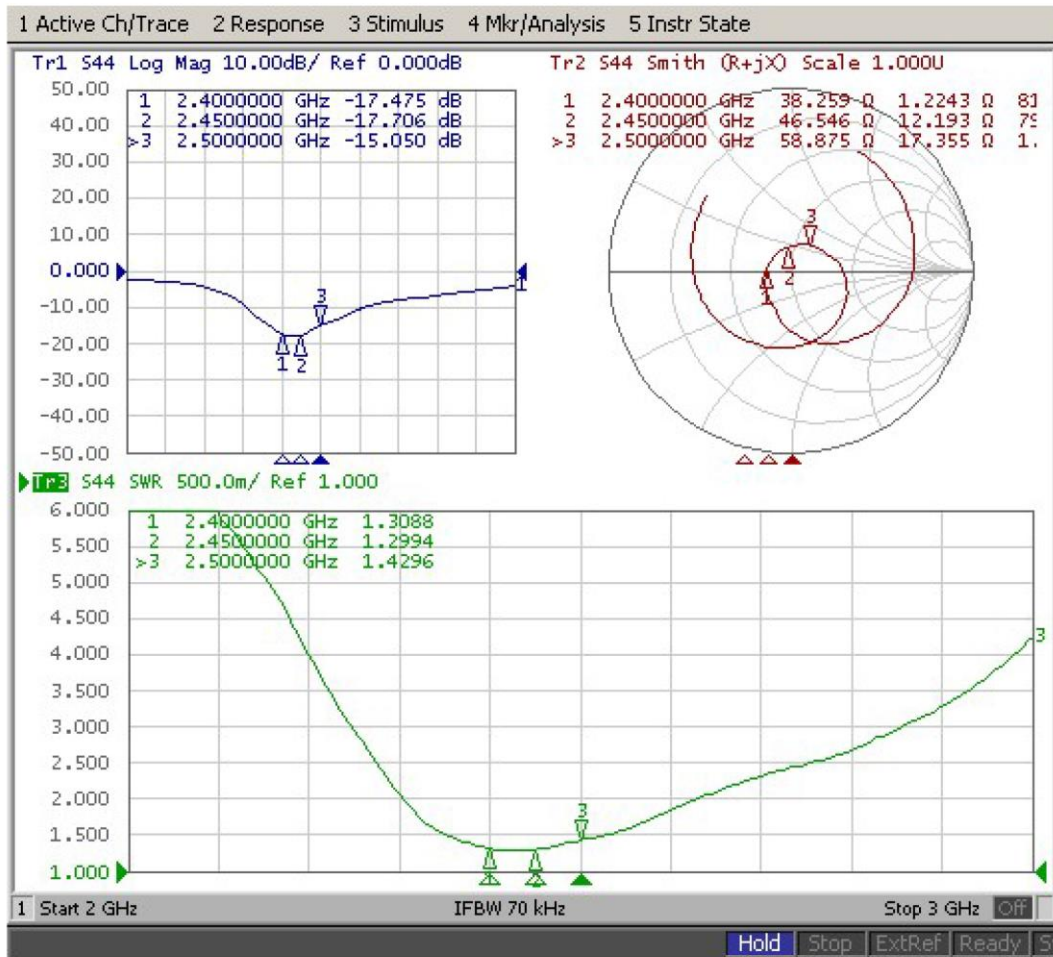


## 3、 DRAWING

Unit: mm



4、VSWR



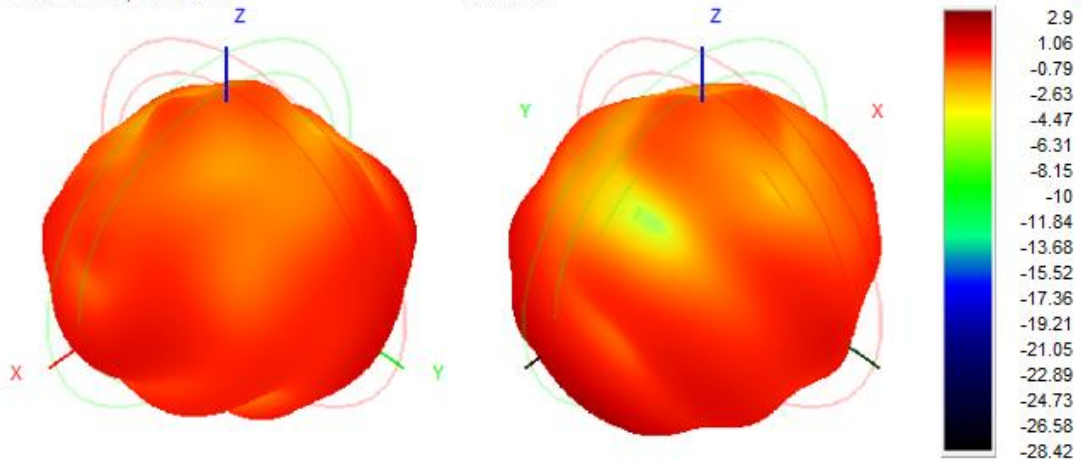
5. Gain and efficiency

Frequency (MHz)	2400	2410	2420	2430	2440	2450	2460	2470	2480	2490	2500
	.0	.0	.0	.0	.0	.0	.0	.0	.0	.0	.0
Efficiency (dBi)	-2.76	-2.82	-2.85	-2.97	-3.01	-2.95	-3.09	-3.19	-3.17	-3.17	-2.99
Gain (dBi)	2.90	2.94	2.99	2.87	2.73	2.66	2.51	2.36	2.27	2.05	2.19
Efficiency (%)	52.9	52.2	51.8	50.4	50.0	50.6	49.11	48.0	48.2	48.1	50.2
	1	9	7	2	1	7		0	3	8	7
Directivity (dB)	5.66	5.76	5.84	5.84	5.74	5.61	5.60	5.55	5.43	5.22	5.18
Peak Gain	111.0	111.0	112.0	112.0	112.0	112.0	148.	148.	148.	149.	114.0
Position (Theta)	0	0	0	0	0	0	00	00	00	00	0
Peak Gain	147.	147.	147.	146.	146.	146.	173.	174.	175.	176.	145.
Position (Phi)	00	00	00	00	00	00	00	00	00	00	00
Efficiency	33.1	32.4	31.8	30.6	30.1	30.3	29.1	28.2	28.0	27.8	28.8
ThetaPol (%)	8	7	7	5	8	7	9	3	6	4	8
Efficiency PhiPol	19.7	19.8	20.0	19.7	19.8	20.3	19.9	19.7	20.1	20.3	21.3
(%)	3	3	0	7	3	0	1	7	7	4	9
Upper Hem.	22.5	22.4	22.5	22.1	22.0	22.3	21.5	20.9	21.0	21.2	22.5
Efficiency (%)	5	6	1	0	7	4	1	7	7	7	8
Lower Hem.	30.3	29.8	29.3	28.3	27.9	28.3	27.5	27.0	27.1	26.9	27.7
Efficiency (%)	6	3	7	2	4	3	9	3	7	1	0

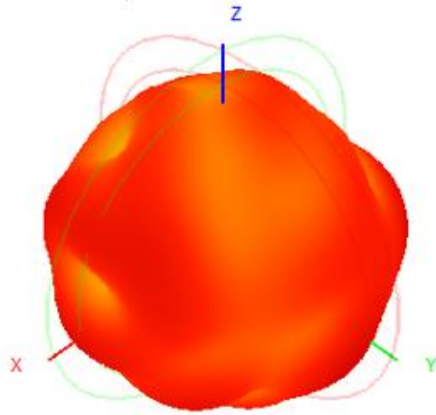
6. 3D Pattern

2400.0MHz H+V, Eff: 52.9%

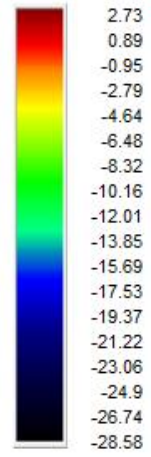
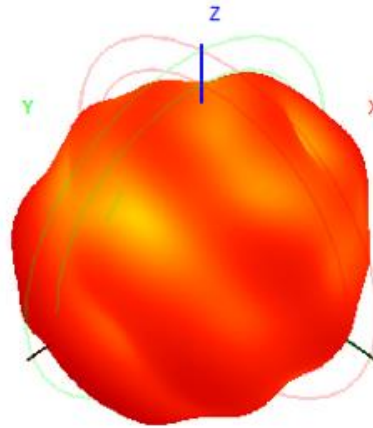
Back View



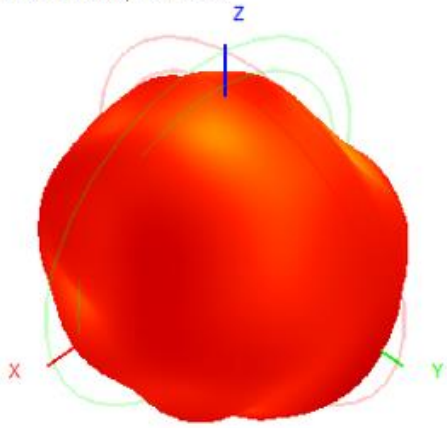
2440.0MHz H+V, Eff: 50.0%



Back View



2500.0MHz H+V, Eff: 50.3%



Back View

