



B.6 Duty Cycle

Test Result

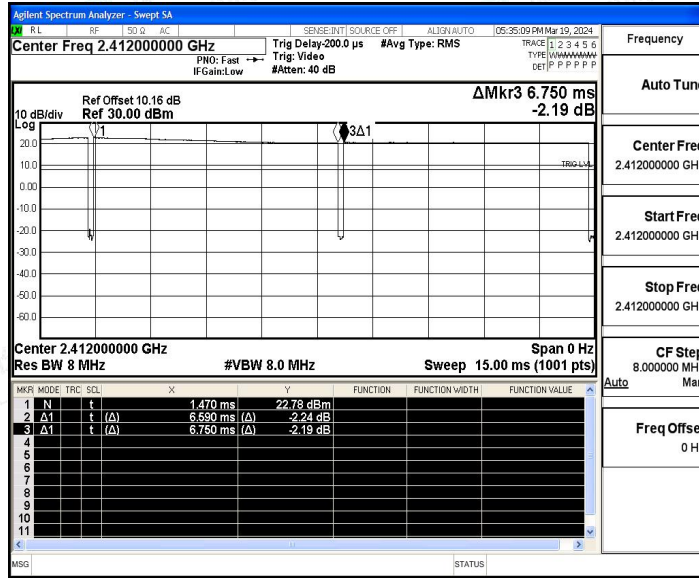
TestMode	Antenna	Freq(MHz)	Transmission Duration [ms]	Transmission Period [ms]	Duty Cycle [%]	Factor	1/T Factor[kHz]	Verdict
11B	Ant1	2412	6.59	6.75	97.63	0.10	0.15	---
		2437	6.60	6.77	97.49	0.11	0.15	---
		2462	4.20	4.33	97.00	0.13	0.24	---
11G	Ant1	2412	1.36	1.62	83.95	0.76	0.74	---
		2437	1.36	1.65	82.42	0.84	0.74	---
		2462	1.36	1.54	88.31	0.54	0.74	---
11N20SISO	Ant1	2412	1.15	1.33	86.47	0.63	0.87	---
		2437	1.15	1.33	86.47	0.63	0.87	---
		2462	1.15	1.32	87.12	0.60	0.87	---
11N40SISO	Ant1	2422	0.57	0.78	73.08	1.36	1.75	---
		2437	0.57	0.82	69.51	1.58	1.75	---
		2452	0.57	0.78	73.08	1.36	1.75	---



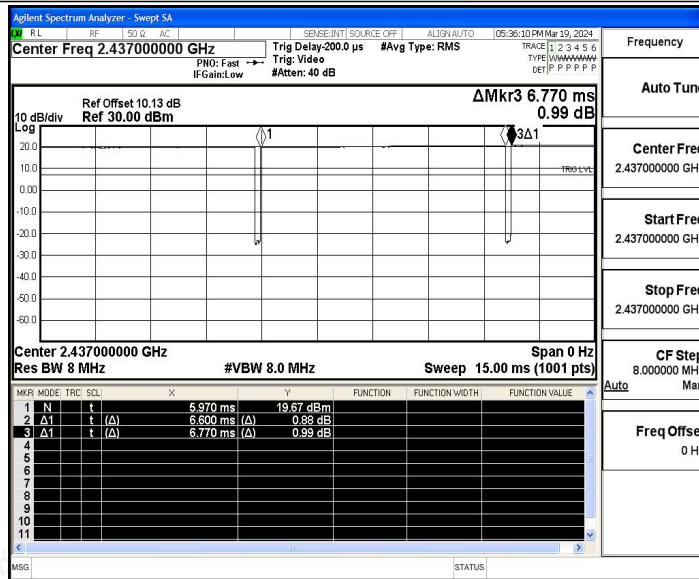


Test Graphs

11B_Ant1_2412

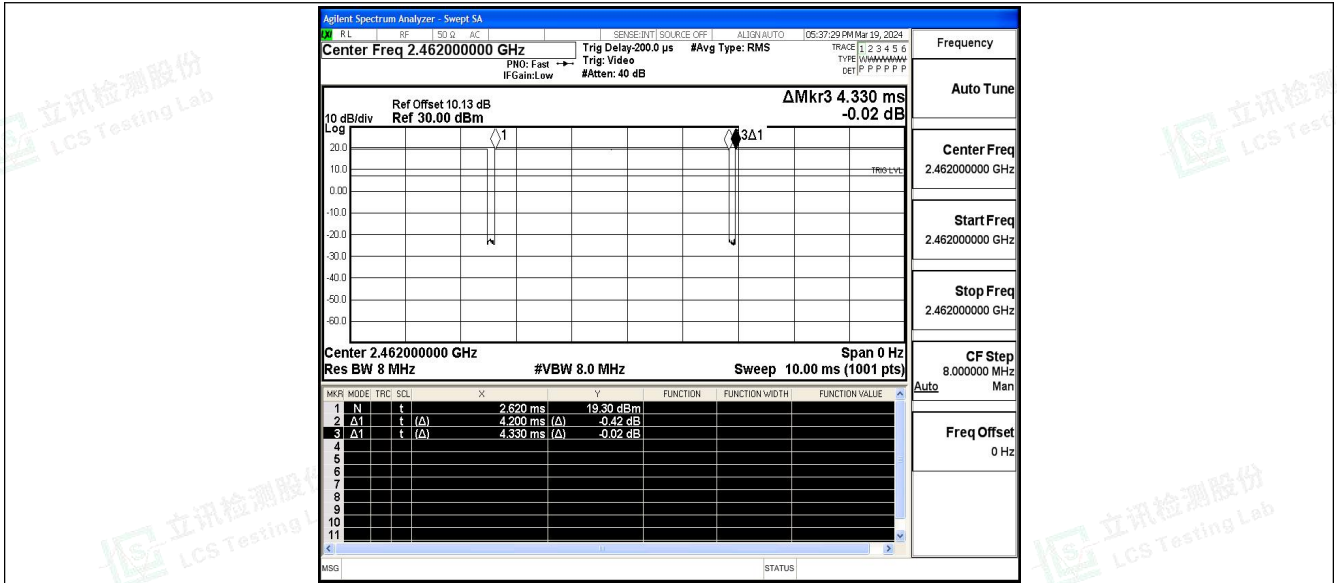


11B_Ant1_2437

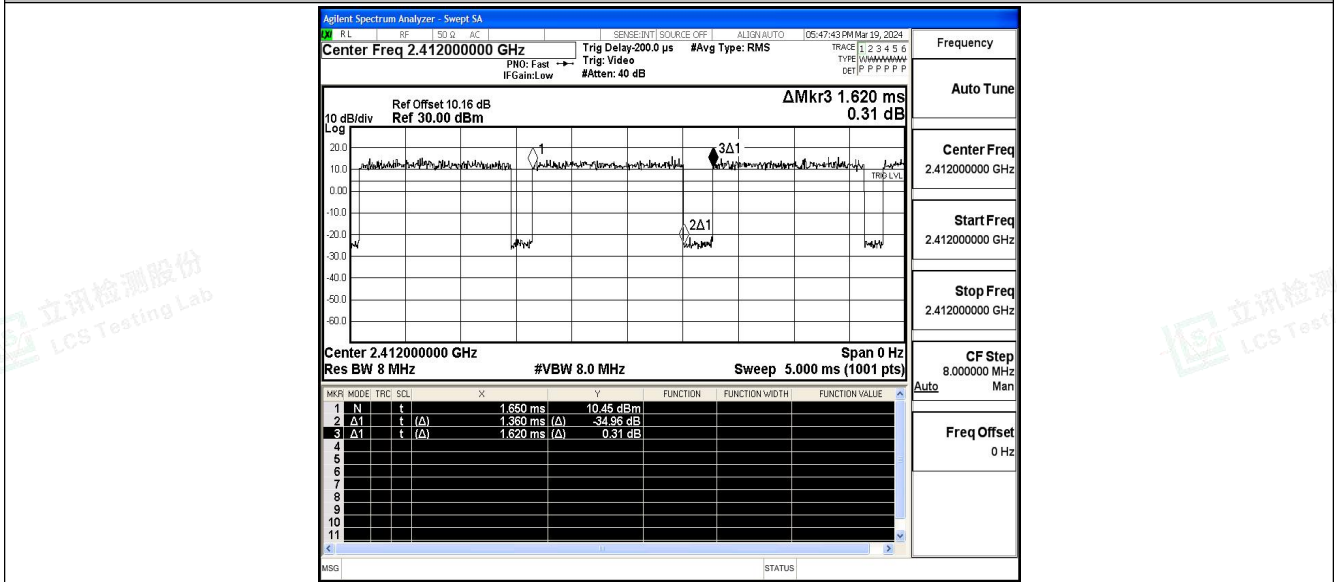


11B_Ant1_2462



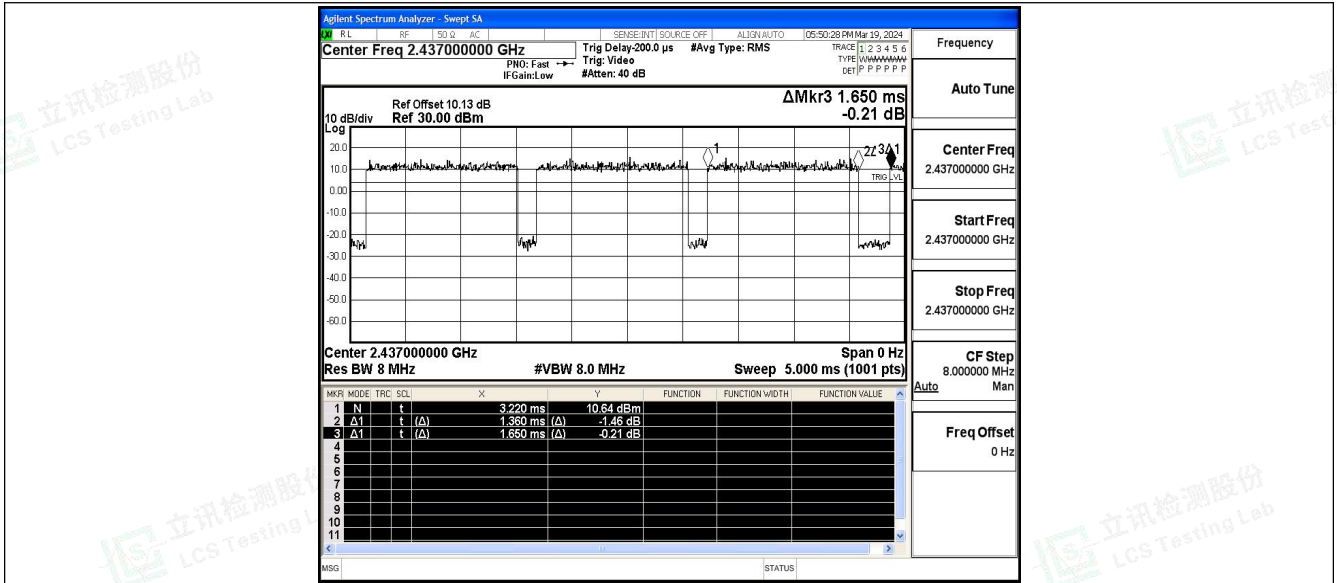


11G_Ant1_2412

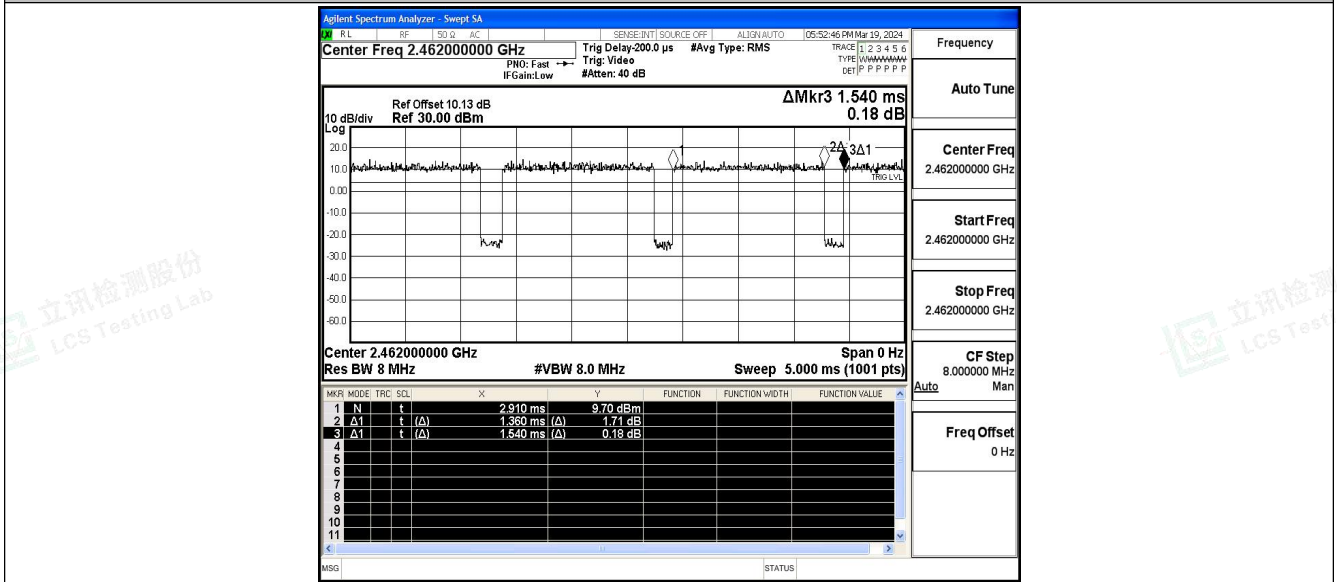


11G_Ant1_2437



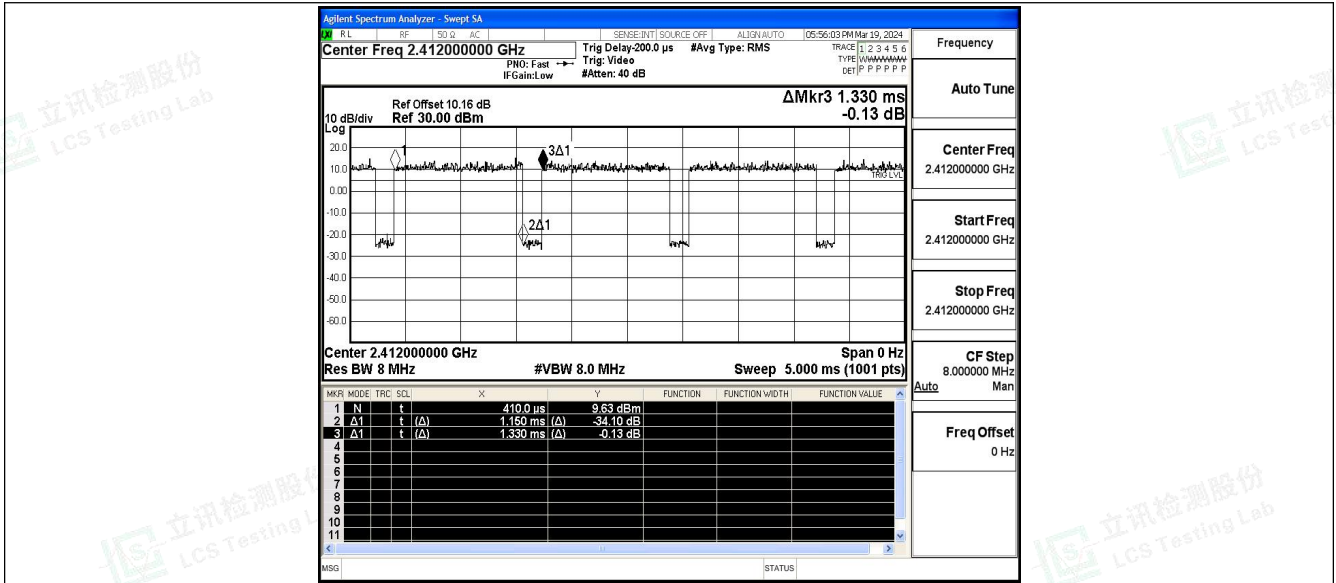


11G_Ant1_2462

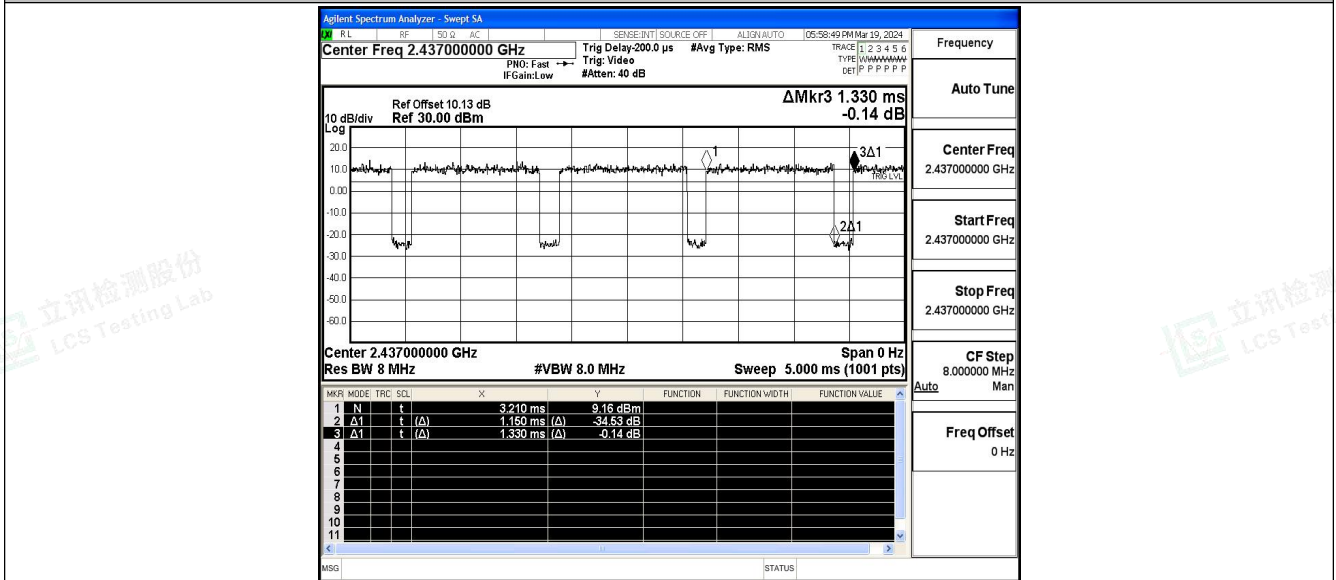


11N20SISO_Ant1_2412



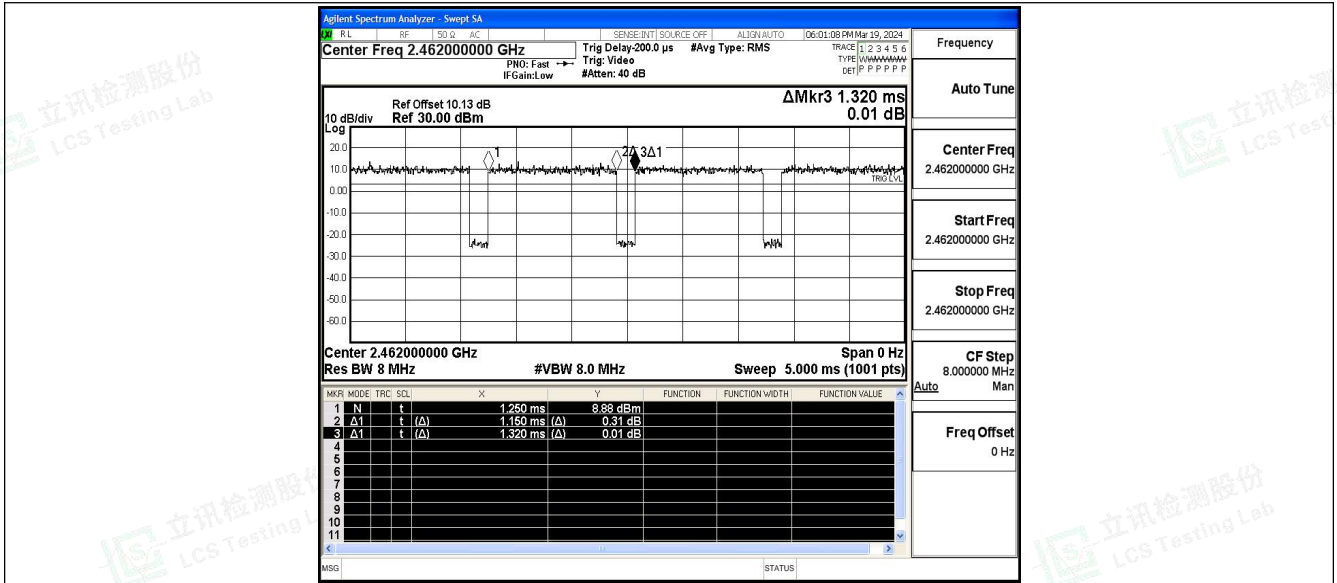


11N20SISO_Ant1_2437

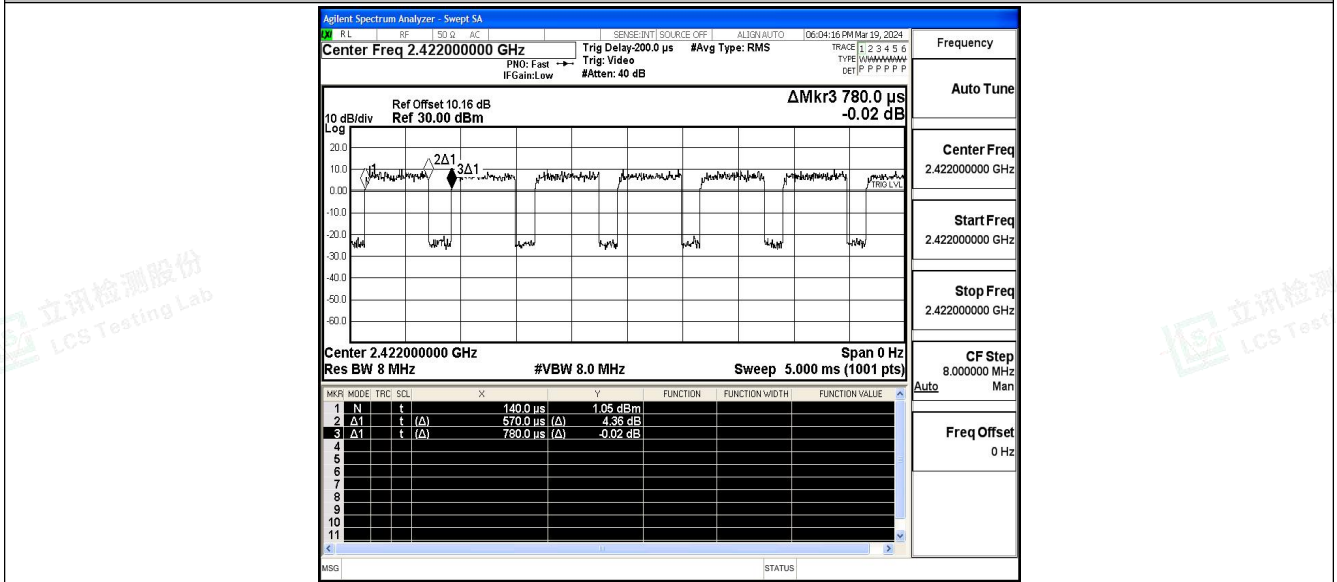


11N20SISO_Ant1_2462



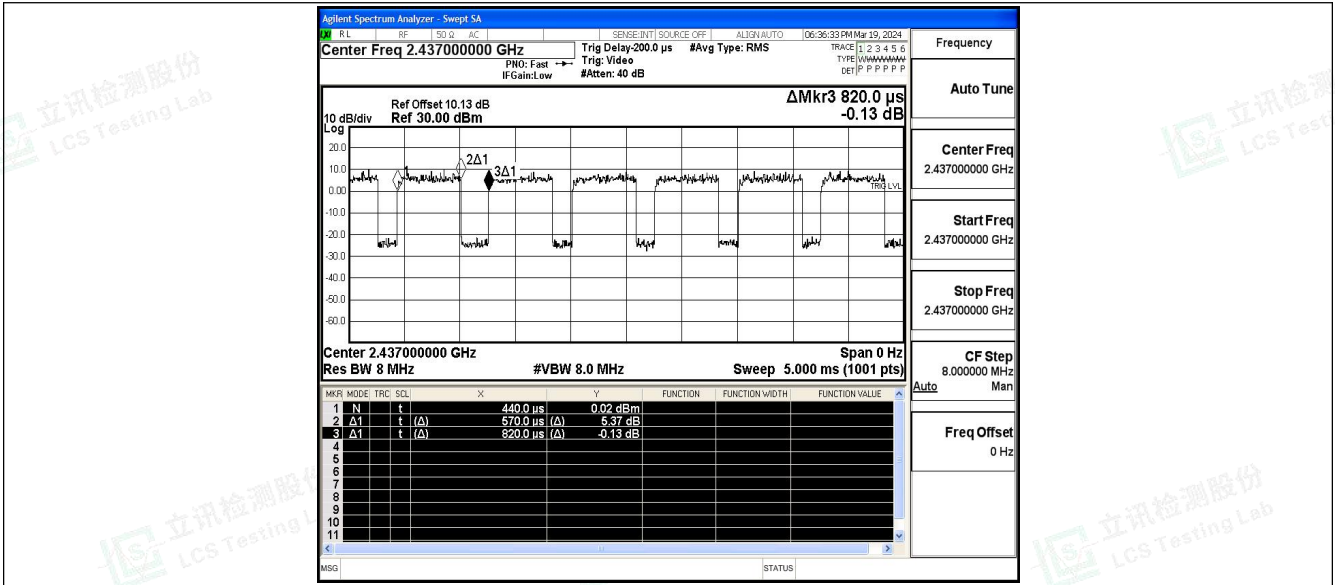


11N40SISO_Ant1_2422

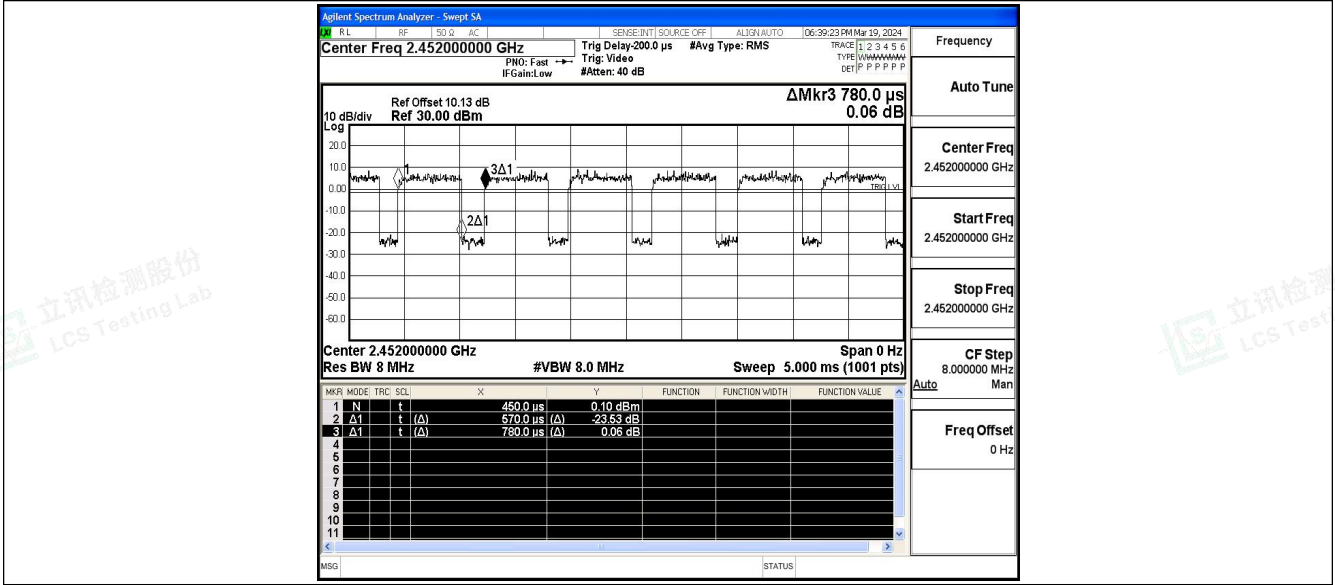


11N40SISO_Ant1_2437





11N40SISO_Ant1_2452





B.7 Emissions in Restricted Bands

Test Result

TestMode	Antenna	ChName	Freq(MHz)	Detector	Freq [MHz]	Result [dBm]	Limit [dBm]	Result [dBuV/m]	Limit [dBuV/m]	Verdict
11B	Ant1	Low	2412	AV	2310.000	-50.32	≤-41.20	44.88	≤54	PASS
				AV	2361.360	-48.75	≤-41.20	46.45	≤54	PASS
				AV	2390.000	-49.53	≤-41.20	45.67	≤54	PASS
				Peak	2310.000	-42.61	≤-21.20	52.59	≤74	PASS
				Peak	2344.200	-39.17	≤-21.20	56.03	≤74	PASS
				Peak	2390.000	-40.5	≤-21.20	54.70	≤74	PASS
		High	2462	AV	2483.500	-46.5	≤-41.20	48.70	≤54	PASS
				AV	2486.530	-45.28	≤-41.20	49.92	≤54	PASS
				AV	2500.000	-47.04	≤-41.20	48.16	≤54	PASS
				Peak	2483.500	-38.68	≤-21.20	56.52	≤74	PASS
				Peak	2498.080	-36.19	≤-21.20	59.01	≤74	PASS
				Peak	2500.000	-40.17	≤-21.20	55.03	≤74	PASS
11G	Ant1	Low	2412	AV	2310.000	-47.75	≤-41.20	47.45	≤54	PASS
				AV	2389.830	-45.62	≤-41.20	49.58	≤54	PASS
				AV	2390.000	-45.71	≤-41.20	49.49	≤54	PASS
				Peak	2310.000	-41.21	≤-21.20	53.99	≤74	PASS
				Peak	2389.310	-35.32	≤-21.20	59.88	≤74	PASS
				Peak	2390.000	-36.92	≤-21.20	58.28	≤74	PASS
		High	2462	AV	2483.500	-45.47	≤-41.20	49.73	≤54	PASS
				AV	2484.770	-45.55	≤-41.20	49.65	≤54	PASS
				AV	2500.000	-47.16	≤-41.20	48.04	≤54	PASS
				Peak	2483.500	-34.82	≤-21.20	60.38	≤74	PASS
				Peak	2484.000	-34.32	≤-21.20	60.88	≤74	PASS
				Peak	2500.000	-38.92	≤-21.20	56.28	≤74	PASS
11N20SIS O	Ant1	Low	2412	AV	2310.000	-48.19	≤-41.20	47.01	≤54	PASS
				AV	2389.440	-45.88	≤-41.20	49.32	≤54	PASS
				AV	2390.000	-46.58	≤-41.20	48.62	≤54	PASS
				Peak	2310.000	-39.84	≤-21.20	55.36	≤74	PASS
				Peak	2388.270	-32.72	≤-21.20	62.48	≤74	PASS
				Peak	2390.000	-36.19	≤-21.20	59.01	≤74	PASS
		High	2462	AV	2483.500	-46.32	≤-41.20	48.88	≤54	PASS
				AV	2484.660	-45.64	≤-41.20	49.56	≤54	PASS
				AV	2500.000	-47.05	≤-41.20	48.15	≤54	PASS
				Peak	2483.500	-34.76	≤-21.20	60.44	≤74	PASS
				Peak	2483.890	-33.23	≤-21.20	61.97	≤74	PASS



Shenzhen LCS Compliance Testing Laboratory Ltd.

Add: 101, 201 Bldg A & 301 Bldg C, Juji Industrial Park Yabianxueziwei, Shajing Street, Baoan District, Shenzhen, 518000, China

Tel: +(86) 0755-82591330 | E-mail: webmaster@lcs-cert.com | Web: www.lcs-cert.com

Scan code to check authenticity



11N40SIS O	Ant1	Low	2422	Peak	2500.000	-39.61	≤-21.20	55.59	≤74	PASS
				AV	2310.000	-47.21	≤-41.20	47.99	≤54	PASS
				AV	2388.530	-44.26	≤-41.20	50.94	≤54	PASS
				AV	2390.000	-45.28	≤-41.20	49.92	≤54	PASS
				Peak	2310.000	-40.84	≤-21.20	54.36	≤74	PASS
				Peak	2389.310	-29.25	≤-21.20	65.95	≤74	PASS
		High	2452	AV	2483.500	-44.49	≤-41.20	50.71	≤54	PASS
				AV	2484.220	-43.31	≤-41.20	51.89	≤54	PASS
				AV	2500.000	-45.69	≤-41.20	49.51	≤54	PASS
				Peak	2483.500	-34.43	≤-21.20	60.77	≤74	PASS
				Peak	2484.110	-30.65	≤-21.20	64.55	≤74	PASS
				Peak	2500.000	-38.74	≤-21.20	56.46	≤74	PASS

Note:

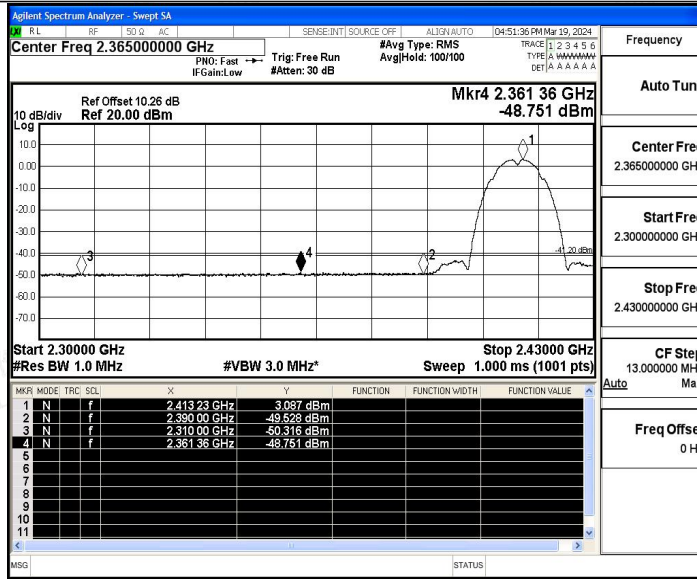
1. The Antenna Gain is compensated in the graph. The Correction Factor is compensated in the graph.
2. The limit in dBm for average detector is conversion from 54dBuV/m, according to 15.209(a). The limit in dBm for peak detector is 20dB above the limit of average detector in dBm.



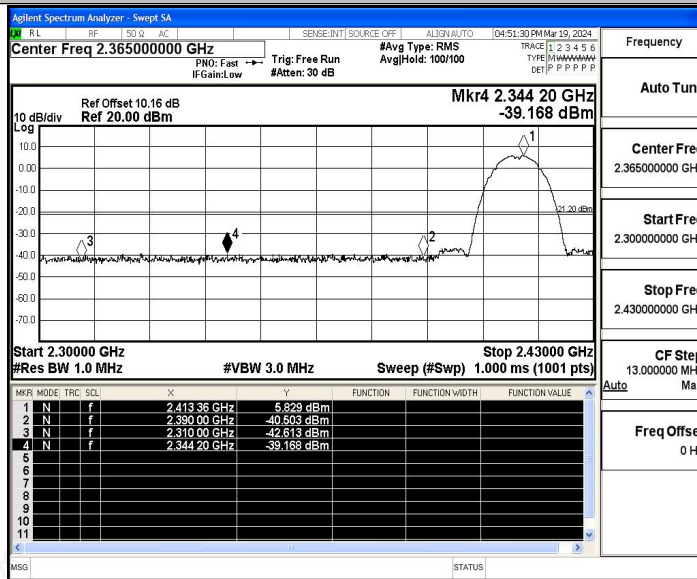


Test Graphs

11B_Ant1_Low_2412_AV

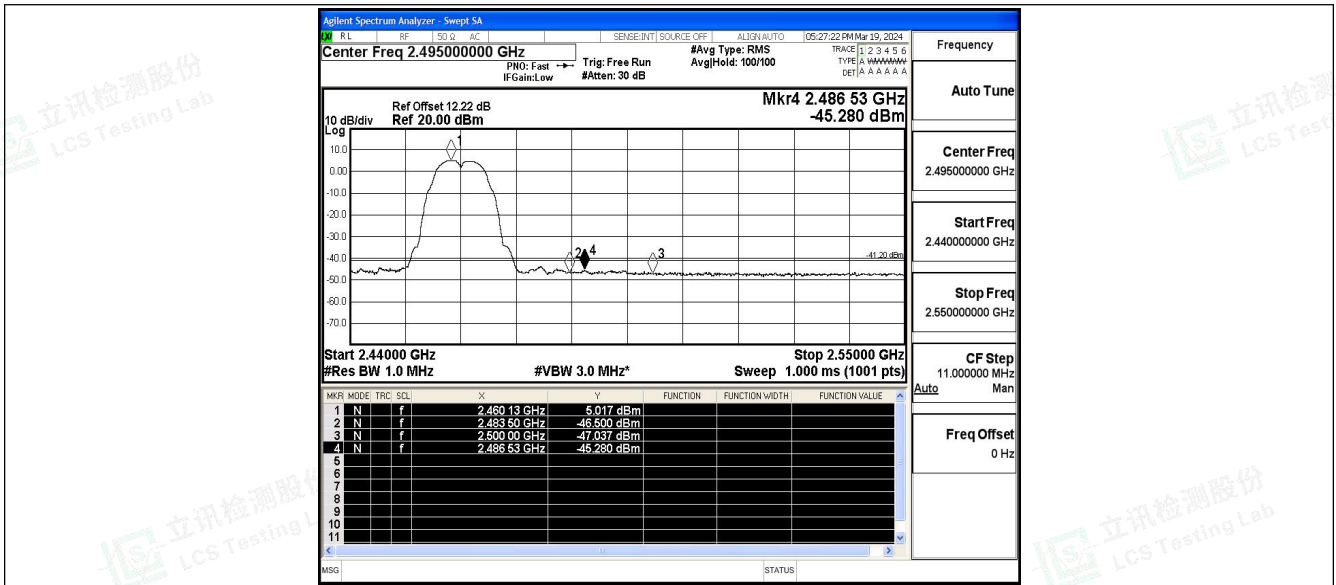


11B_Ant1_Low_2412_Peak

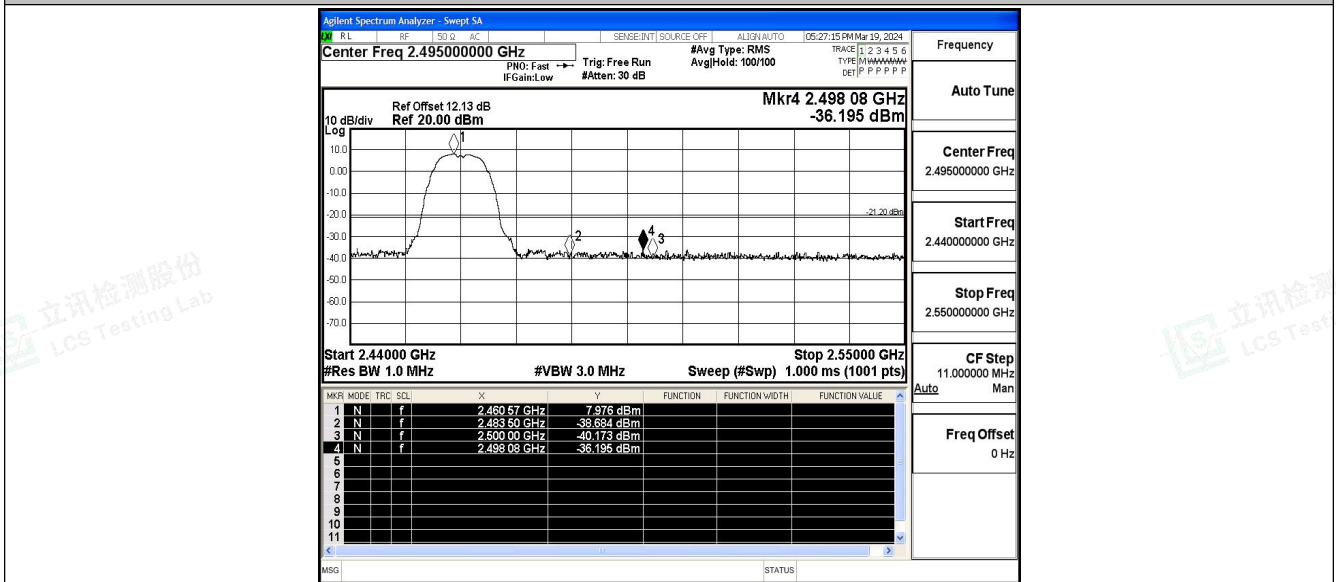


11B_Ant1_High_2462_AV



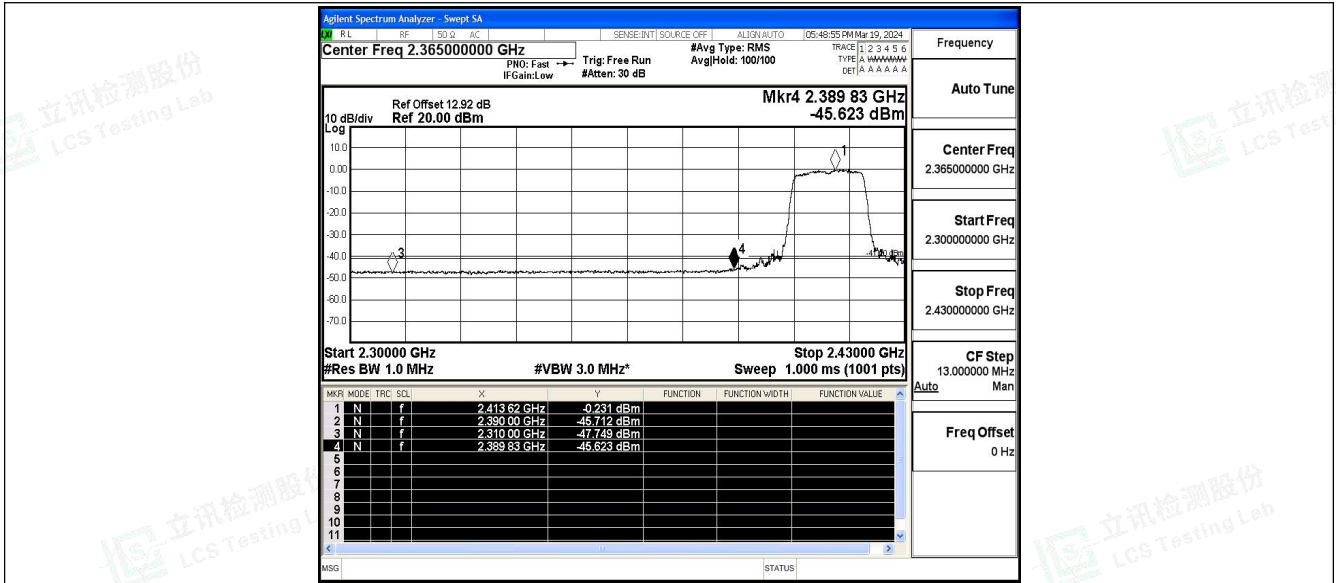


11B_Ant1_High_2462_Peak

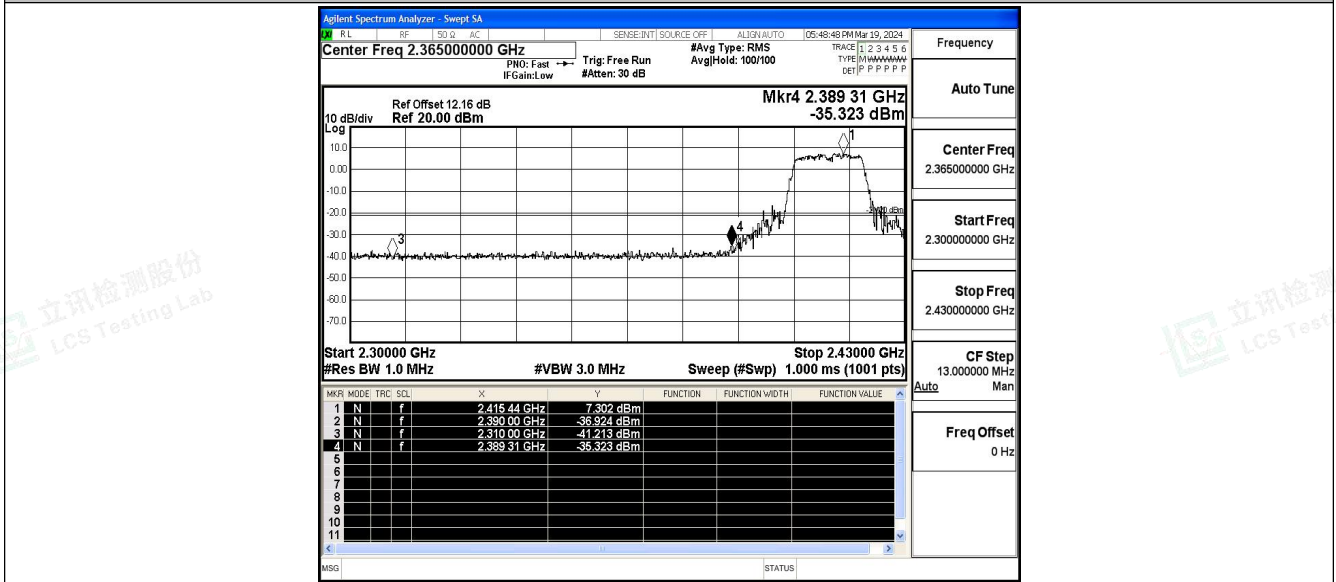


11G_Ant1_Low_2412_AV



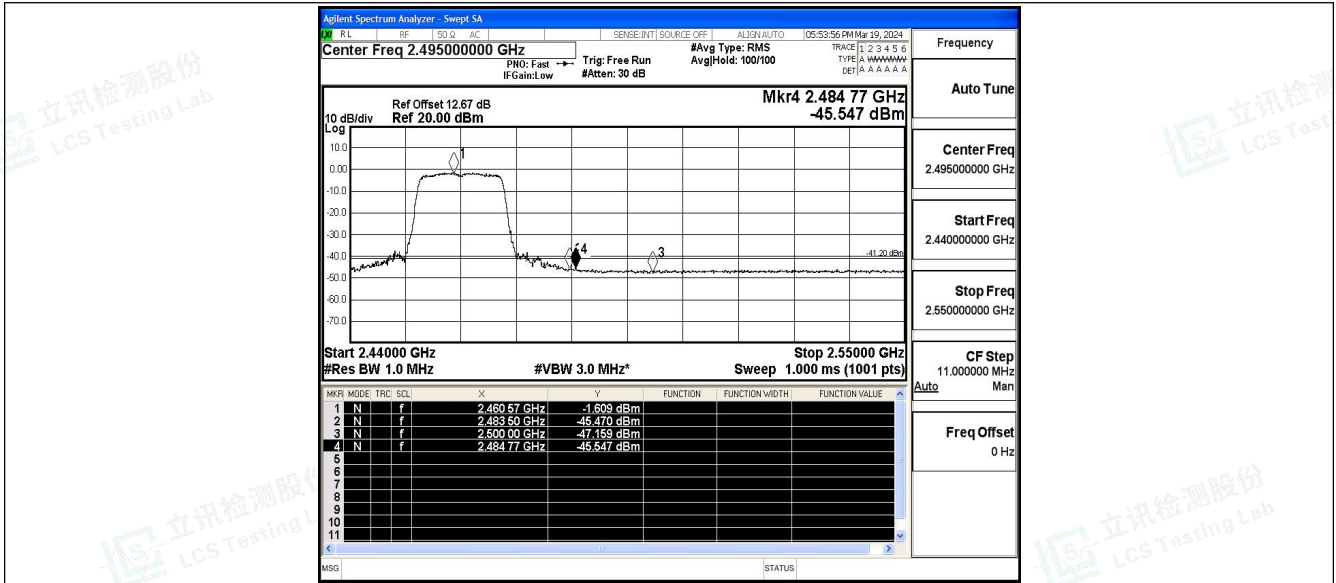


11G_Ant1_Low_2412_Peak

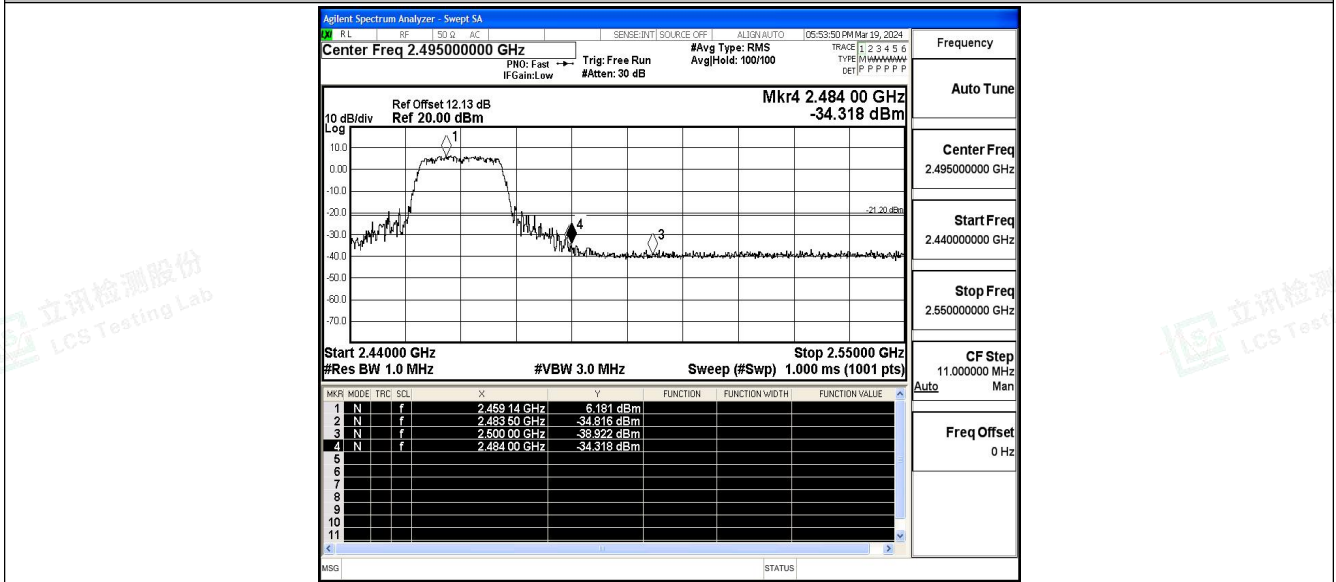


11G_Ant1_High_2462_AV



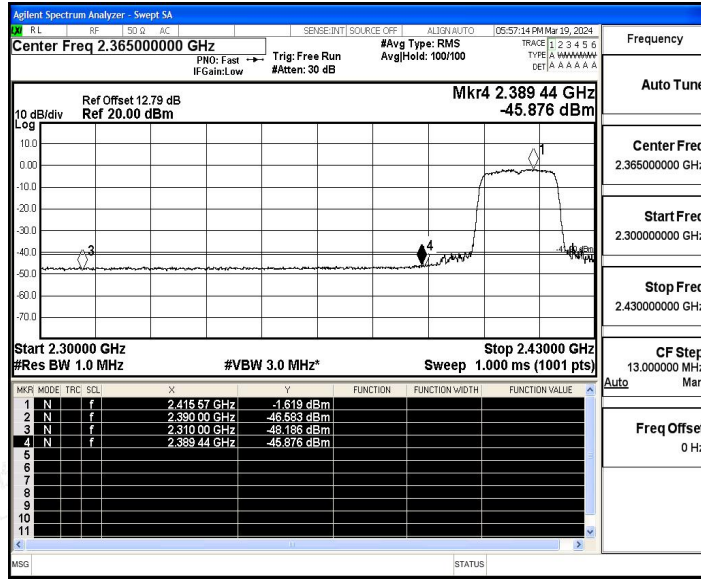


11G_Ant1_High_2462_Peak

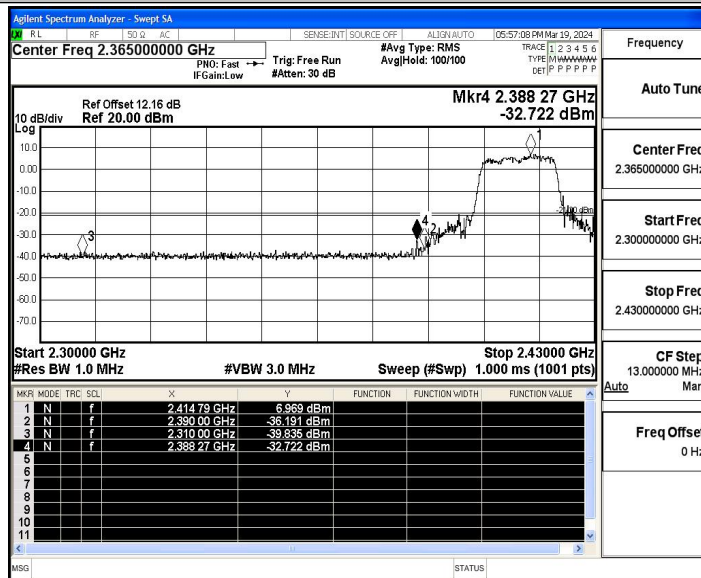


11N20SISO_Ant1_Low_2412_AV



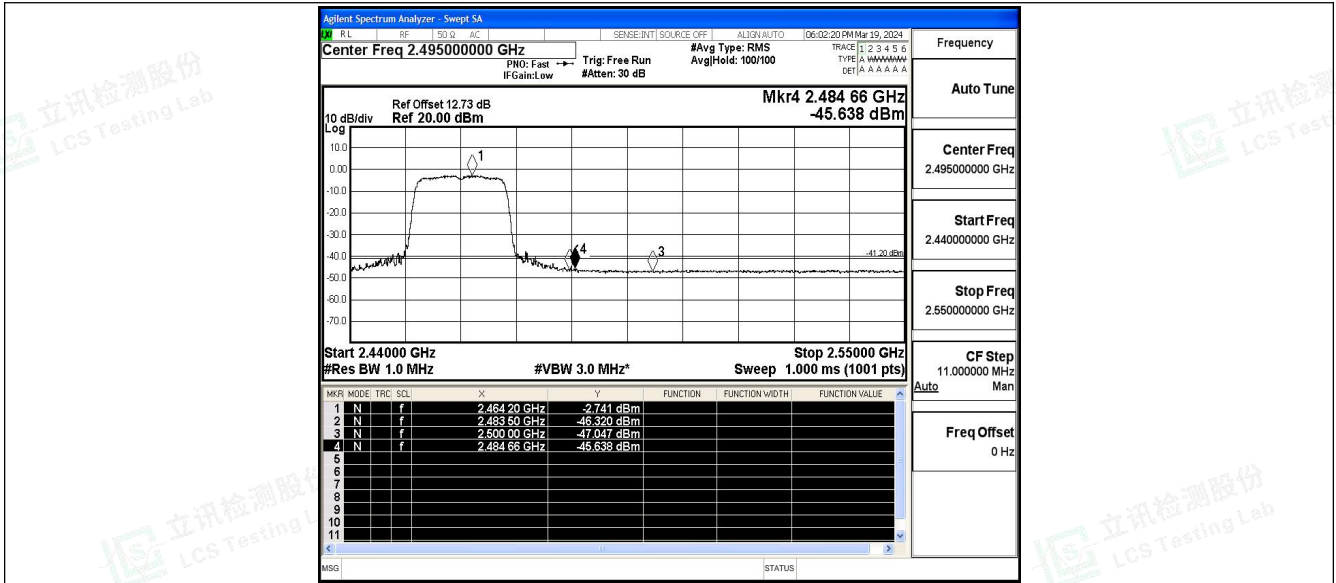


11N20SISO_Ant1_Low_2412_Peak

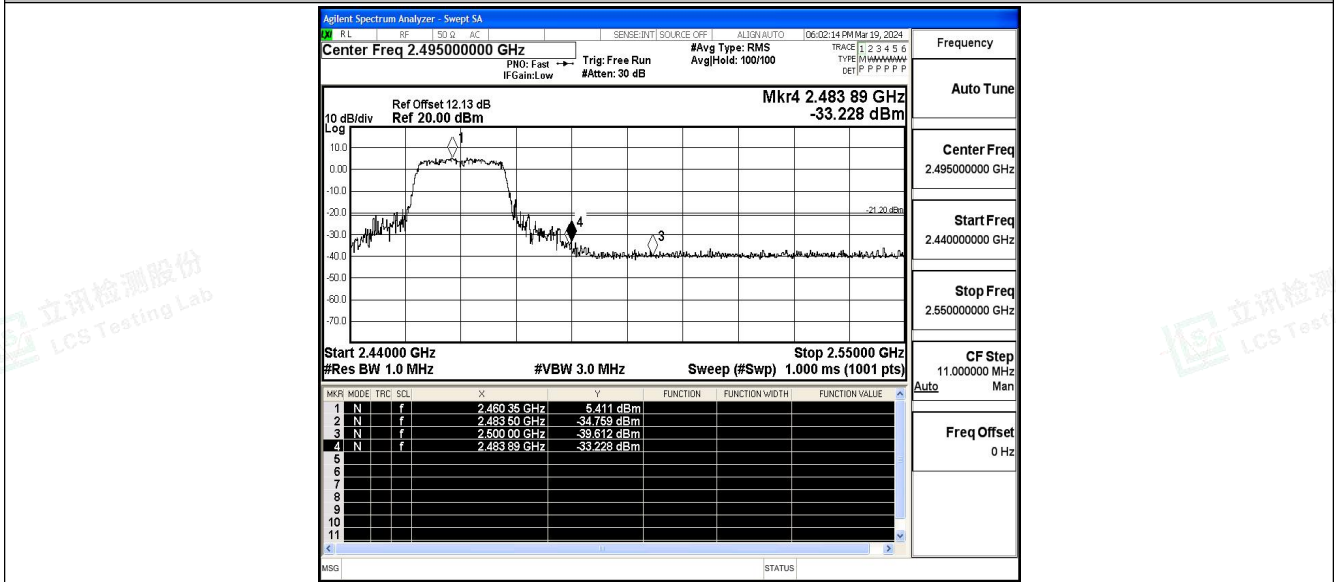


11N20SISO_Ant1_High_2462_AV



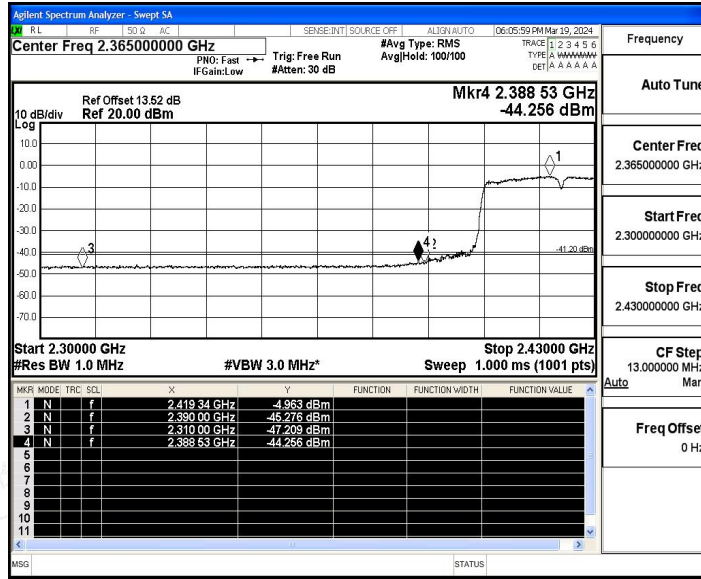


11N20SISO_Ant1_High_2462_Peak

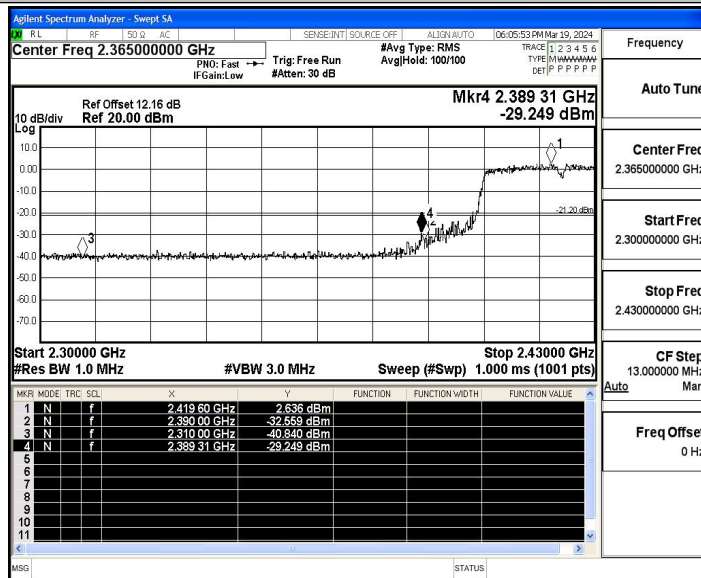


11N40SISO_Ant1_Low_2422_AV



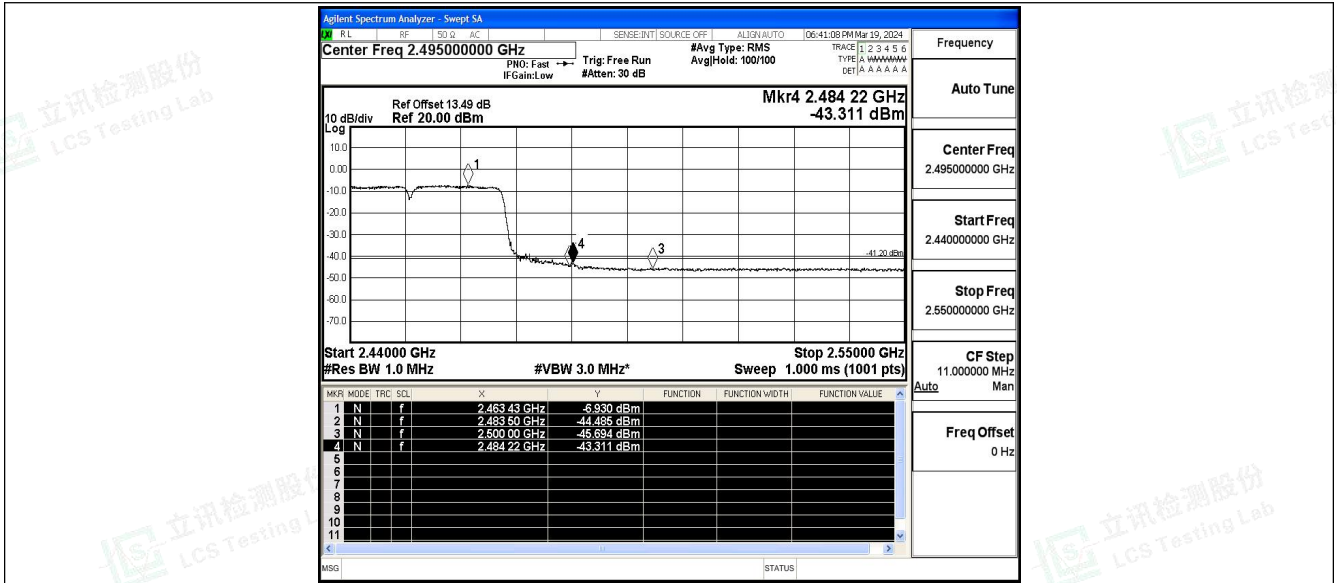


11N40SISO_Ant1_Low_2422_Peak



11N40SISO_Ant1_High_2452_AV





11N40SISO_Ant1_High_2452_Peak

