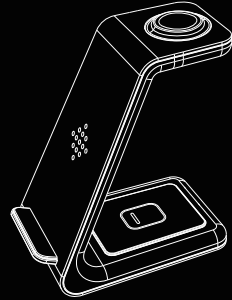


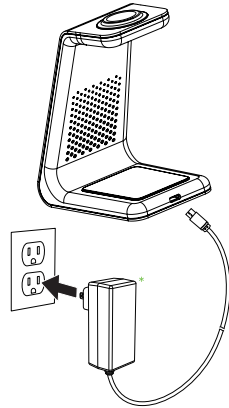
# 尺寸:50XX70MM

T3

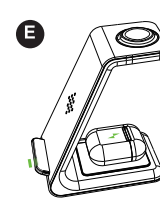
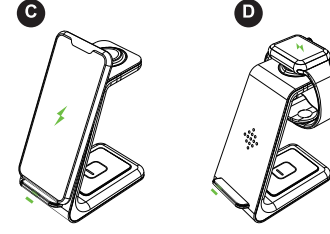
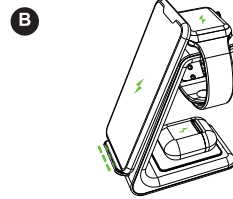
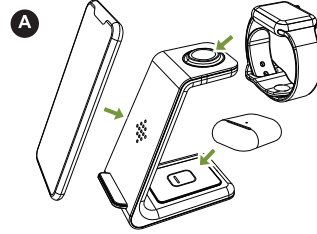


3-in-1 wireless charging station

USER MANUAL



\* Only use certified 18W 9V/2A adapter



## IMPORTANT SAFETY INSTRUCTIONS

Before Using the unit, please read the user manual carefully

- \* Do not store device in high-temperature environment, including heat caused by intense sunlight or other forms of heat. Do not place device in fire or other excessively hot environments. Exposure to fire or temperature above 212°F (100°C) may cause explosion.
  - \* Do not use the wireless charger in excess of its output rating. Overloading outputs above rating may result in a risk of fire or injury to persons.
  - \* Do not expose the wireless charger to rain or snow.
  - \* Do not modify, repair or disassemble the unity, if so, please contact the manufacturer.
- Switch off the wireless charger when not in use. The wireless charger will automatically switch off when disconnected from its wall charger.

## 3-in-1 wireless charging station

T3

### Applicable Devices:

- Samsung Galaxy S10/ S10 Plus/ S10e/ Note 10
- Samsung Galaxy S8/ S8 Plus/ Note 8
- Samsung Galaxy S7/ S7 Edge/ S6 Edge Plus/Note 5
- iPhone 11/ 11 pro/ 11 Pro Max/ XS/ XS Max/ XR/ X/ 8/ 8 Plus
- More cell phones compatible with Qi wireless charge.
- Apple Airpods 2, AirPods Pro (Need to match wireless charging case)
- Apple Watch 5/4/3/2/1

### Please Note:

1. The Watch Wireless Charging Area supports Apple Watch only
2. Please remove your phone case before charging if the thickness > 3 mm, or if the phone case will make your phone

size longer than 164 mm.

3. Only use certified QC 3.0 Fast Charging Wall Adapter to power the device, do not plug into computer USB port or any other non certified USB port. we are not responsible for malfunction due to unsupported adapter use.
4. Place your qi-enabled device accurately in the wireless charging area when charging.
5. a QC3.0 fast charging adapter is required when charging 3 devices simultaneously or want to have a fast charging effect.
6. Make sure to disconnect the device from power when cleaning.
7. It is normal and safe to hear a humming noise when very close to the charger.

It means that this wireless charger is adjusting its temperature to achieve a more efficient charging speed.

8. If your device can not be fully charged, this may due to high environmental temperature, please recharge after the temperature is lowered. Our charger has temperature control to safe guard your device when charging.

### Q&A:

If the LED light flashes and the wireless charging dock doesn't work how can I deal with this problem?

- 1. Make sure your device supports the Qi wireless charging function before using this wireless charger.
- 2. Check if you use the QC3.0 9v/2a adapter to power our wireless charger.

- 3. Test with other USB cables.

- 4. Check whether your devices' case comes with metal objects. Magnetic and metal attachments will make an LED flash and prevent charging.

### 適用設備:

- iPhone 8/8Plus/iPhone X/XS/XR/X Max/iPhone 11/pro/pro max
- Apple Watch 1/2/3/4/5 ● Airpods 1/2/Pro
- Galaxy S10/S9/S9 Plus/Note8/S8/S8 Plus/S7/S7 Edge/S6 Edge Plus
- Qi充電できるAndroid機種 (最新版のiPhone 11/pro/pro max、Apple Watch 5とOS6.0YéYé完璧対応です。)

※「ご注意」:

1. 充電の時、高速充電1U-1/2のため、ぜひ5V-3A/9V-2AのQC3.0KY?9-1を高効率の充電KY?9-1を使ってください。KY?9-1は暫く付属しません。純正のApple製AirpodsC-1だけ対応します、それ以外のC-1製品は暫く対応できません。
2. 購入する前に、ぜひごAirpodsC-1は無線充電機能を搭載することを確認してください
3. 充電の時、安定性と高速充電1U-1/2のため、ぜひ5V-3A/9V-2AのQC3.0の充電KY?9-1を使ってください。(TYPE-CC-1Yル贈り)

4. 充電の時、C-1に入れた状態で充電するのは、C-1は厚すぎの原因で、充電できない場合があります。C-1の厚さは6mm以下の最適です。C-1の厚さをご確認お願い致します。

### 【品質保証】

万が一製造上の原因による不良品がありましたら、弊社と連絡して、無償交換などのG-1提供いたします、ご心配ではありません。問題を解決するまで、弊社は精一杯あなた様に対策を提供しております。

## Warning Statement

This device complies with part 15 of the FCC Rules. Operation is subject to the following two conditions: (1) This device may not cause harmful interference, and (2) this device must accept any interference received, including interference that may cause undesired operation.

Any Changes or modifications not expressly approved by the party responsible for compliance could void the user's authority to operate the equipment.

**Note:** This equipment has been tested and found to comply with the limits for a Class B digital device, pursuant to part 15 of the FCC Rules. These limits are designed to provide reasonable protection against harmful interference in a residential installation. This equipment generates uses and can radiate radio frequency energy and, if not installed and used in accordance with the instructions, may cause harmful interference to radio communications. However, there is no guarantee that interference will not occur in a particular installation. If this equipment does cause harmful interference to radio or television reception, which can be determined by turning the equipment off and on, the user is encouraged to try to correct the interference by one or more of the following measures:

- Reorient or relocate the receiving antenna.
- Increase the separation between the equipment and receiver.
- Connect the equipment into an outlet on a circuit different from that to which the receiver is connected.
- Consult the dealer or an experienced radio/TV technician for help.

This equipment complies with FCC radiation exposure limits set forth for an uncontrolled environment. This equipment should be installed and operated with minimum distance 20cm between the radiator & your body.