

Catlog Pendant User Manual

Product Name: Catlog Pendant

Model Name: CP

Specifications

Main power source	Pin shaped lithium ion battery
System operating voltage	3.0V~4.35V
Sensor	3-axis acceleration sensor
Device size	W41.3xD12.5xH9.7 (mm)
Device weight	4.0g ± 0.2g
IPX0	However protected from instant water drop from the front side of the device

- Lead-free process
- Uses Bluetooth 5.0 module
- Send information collected on 3-axis acceleration sensor to Catlog Home via BLE
 - *Sensor information can be sent within 10m radius of Catlog Home

FCC Compliant Statement

This device complies with part 15 of the FCC Rules. Operation is subject to the following two conditions: (1) This device may not cause harmful interference, and (2) this device must accept any interference received, including interference that may cause undesired operation.

Any Changes or modifications not expressly approved by the party responsible for compliance could void the user's authority to operate the equipment

Note:

This equipment has been tested and found to comply with the limits for a Class B digital device, pursuant to part 15 of the FCC Rules. These limits are designed to provide reasonable protection against harmful interference in a residential installation. This equipment generates, uses and can radiate radio frequency energy and, if not installed and used in accordance with the instructions, may cause harmful interference to radio communications. However, there is no guarantee that interference will not occur in a particular installation. If this equipment does cause harmful interference to radio or television reception, which can be determined by turning the equipment off and on, the user is encouraged to try to correct the interference by one or more of the following measures:

- Reorient or relocate the receiving antenna.
- Increase the separation between the equipment and receiver.
- Connect the equipment into an outlet on a circuit different from that to which the receiver is connected.

- Consult the dealer or an experienced radio/TV technician for help.

The device has been evaluated to meet general RF exposure requirement. The device can be used in portable exposure condition without restriction.

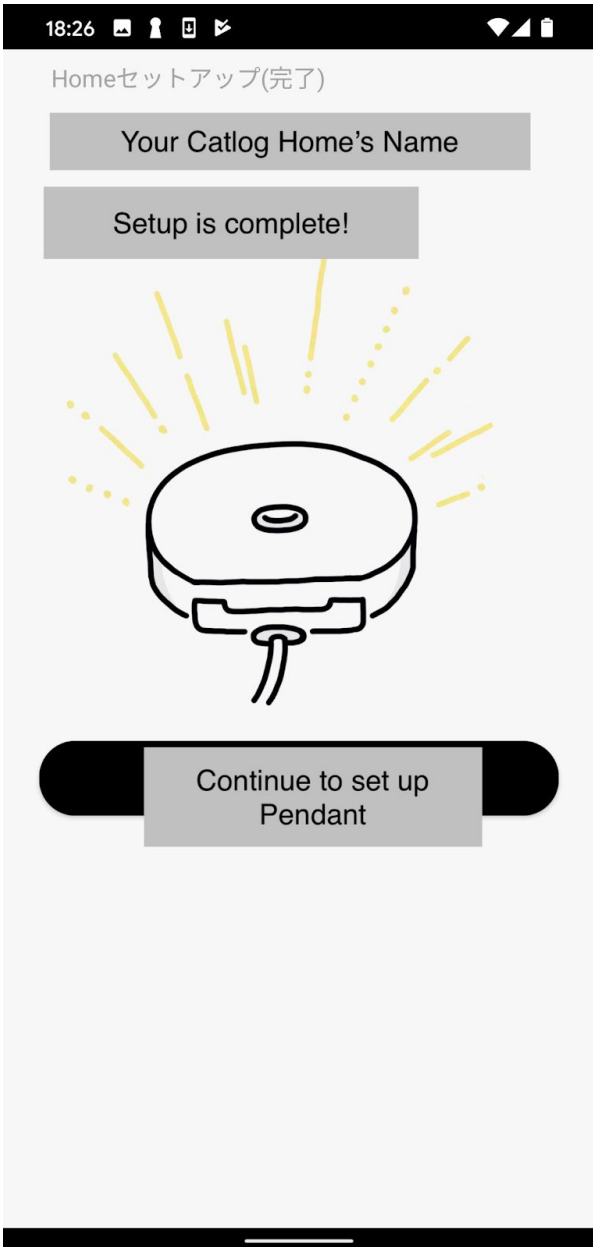
Note

The actual app and contents will not be in English.
Please use this document as a reference when using the app.

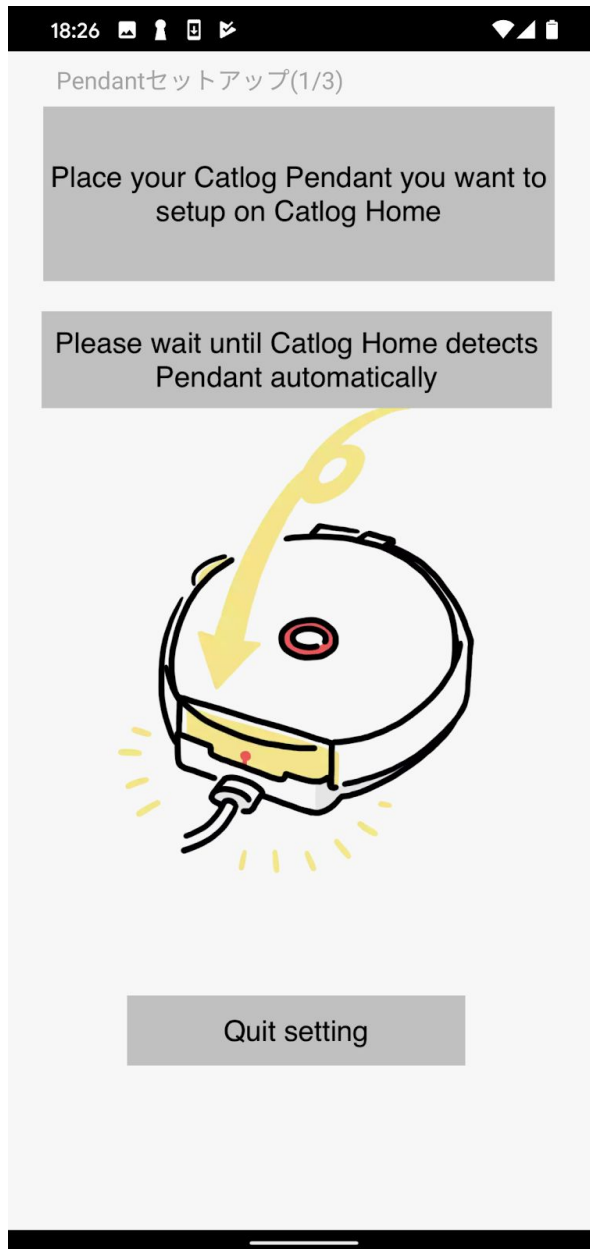
To setup Catlog Pendant, Catlog Home must be set up beforehand. Please refer to App Manual for Catlog Home.

If there are any issues or questions, please contact me.

How to set up Catlog Pendant

<p>1</p>		<p>After setting up Catlog Home, press “Continue to setup Pendant” button to set up Catlog Pendant.</p> <p>If you have already set up Catlog Home, please refer to step 9 to begin Catlog Pendant’s setup process.</p>
----------	--	--

2



Place Catlog Pendant on Catlog Home. Make sure Pendant is placed firmly.

Please wait until Catlog Home automatically detects Pendant. When the detection is successful, app screen will change automatically.

If Pendant cannot be detected for a long time, there may be an issue with the Pendant or Catlog Home's setup. Please contact me for assistance.

3

Pendantセッティングアップ(2/3)

Who will wear this Pendant?

ID: Pendant's ID

Cat's Name

Gender

Cat's Breed

Birthday (optional)

*誕生日わからない場合は出会った日などを入力してください

Current Weight (optional)

小数点第1位まで有効

OK

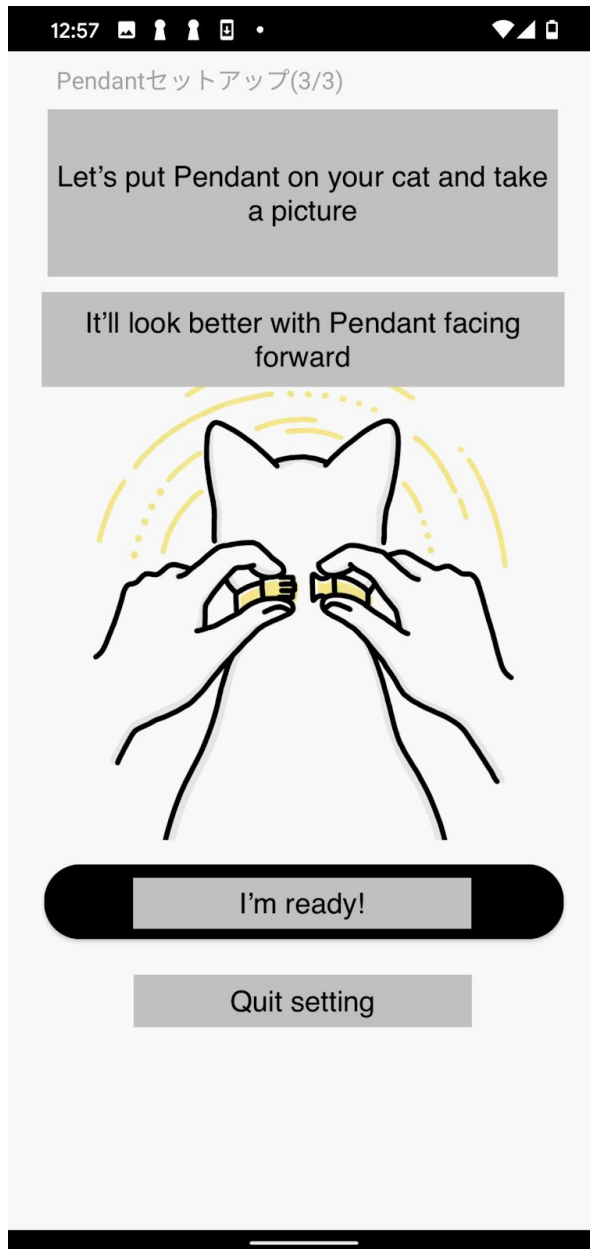
Quit setting

When the Pendant is successfully detected, the app will ask you to fill in the information of your cat who would wear this Pendant.

The Pendant ID is an identification number that starts with '2'.

Please fill in 'Name', 'Gender', and 'Breed' to proceed.
Once the fields are filled, press "OK".

4



The app will ask you to take or select a picture.
It can be any picture of choice.

Please press "I'm ready!" button to proceed.

5



A device's prompt will be shown at the bottom of the screen. It will let you choose between Camera and Gallery (Library).

Please select one of the options and proceed accordingly. You can just take a random picture with a camera.

6

12:58



This looks great! Do you like the picture?



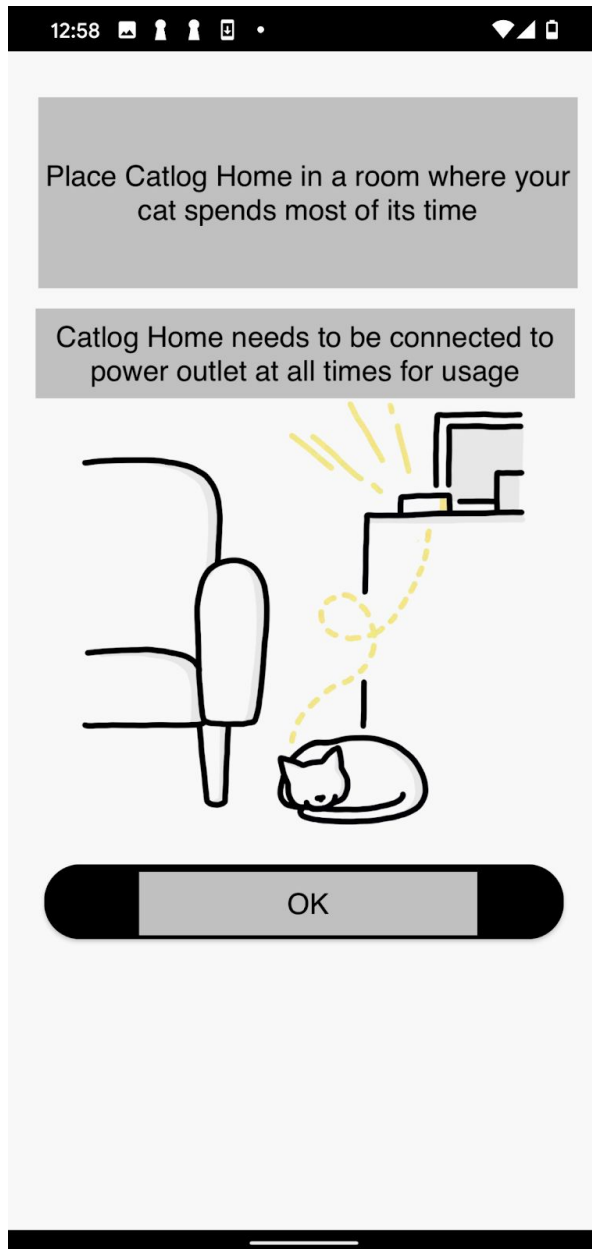
Try again

OK!

Add later

Once you take or choose a picture, it'll show a preview.

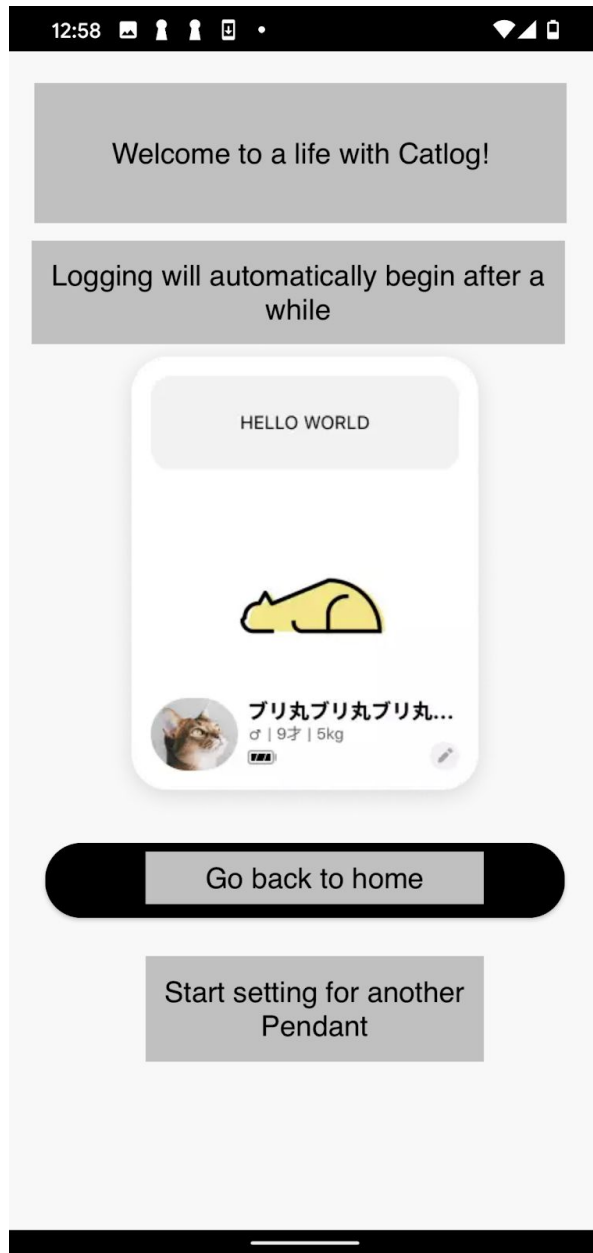
Press "OK" button and proceed.



The app will ask users to place Catlog Home in a room. For testing purpose, you do not have to move Catlog Home if not necessary.

Please keep in mind that Catlog Home must be powered on (connected to power source) at all time for Catlog Pendant to send data to Home via BLE.

When you are ready, press "OK" button and proceed.



When this screen is shown, the setting up flow is completed. Please press “Go back to home” button.

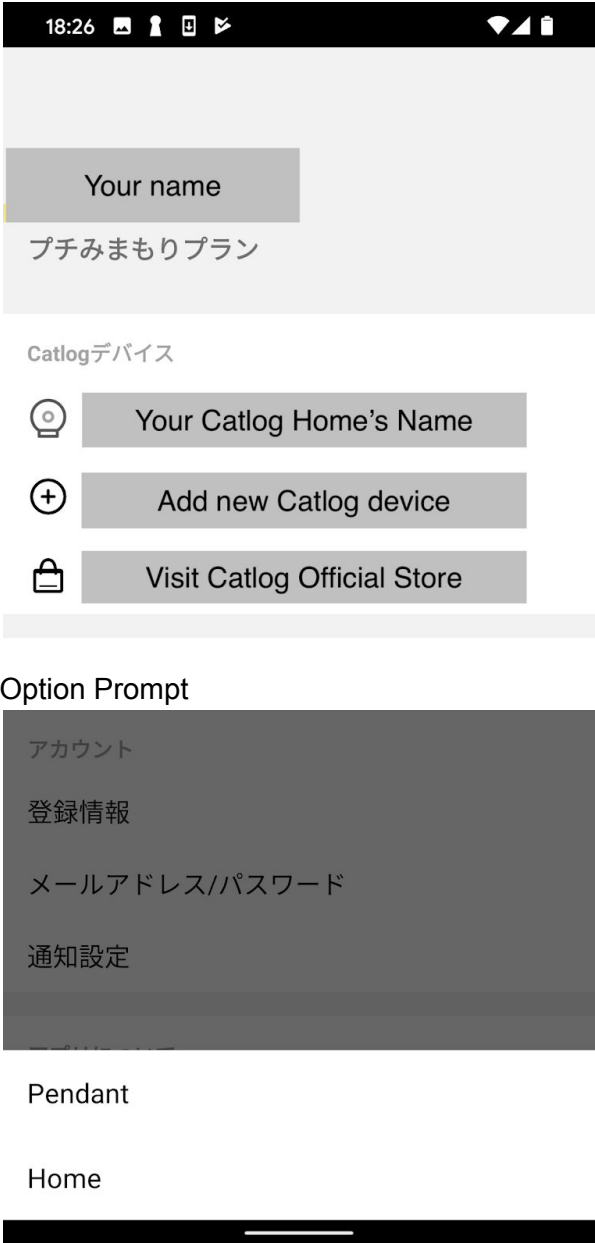
Catlog Pendant may take a little while to start logging and sending data to Catlog Home.

Also, please make sure to take Catlog Pendant off from Catlog Home for it to start sending data.

When you first set up Pendant, it may not have enough battery to start working.

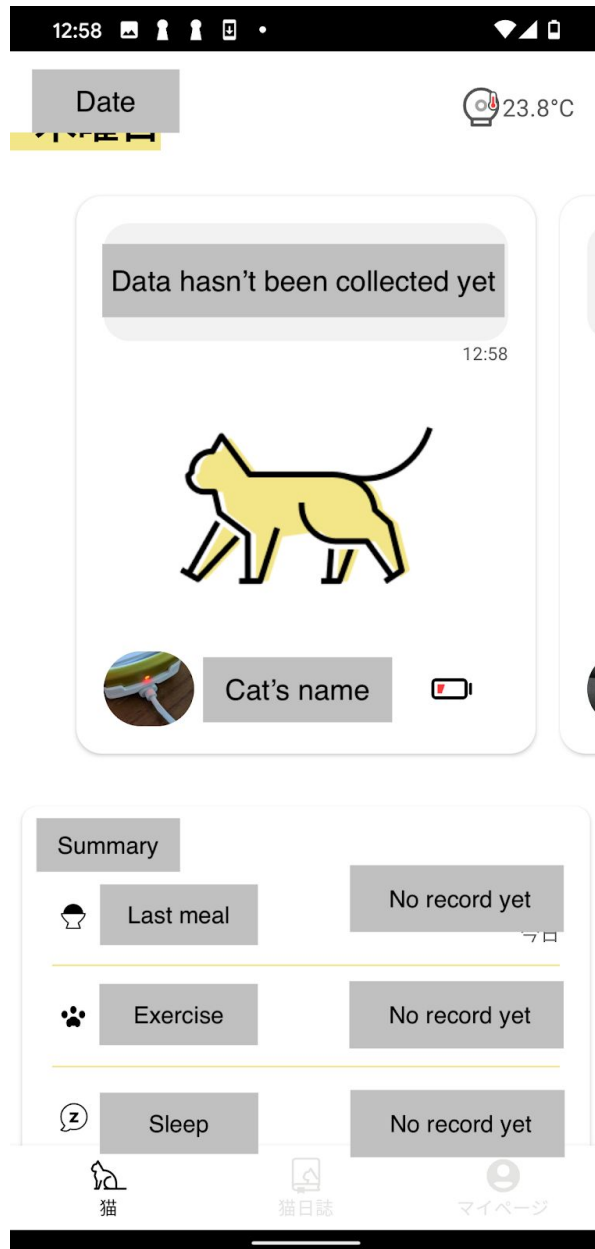
If so, please leave the Pendant on Catlog Home for about 4 hours to fully charge the battery.

App will send you notification if it is low on battery and when the battery is full.

9		<p>If you have already set up Catlog Home, you will need to start the setup process from My Page.</p> <p>Go to My Page and select “Add new Catlog device”.</p> <p>A prompt would be shown below. Choose “Pendant” and proceed from step 2.</p>
---	--	--

Other app screens

1



The screen you will see when you finish setting up for Catlog Pendant. This is the home screen for the app.