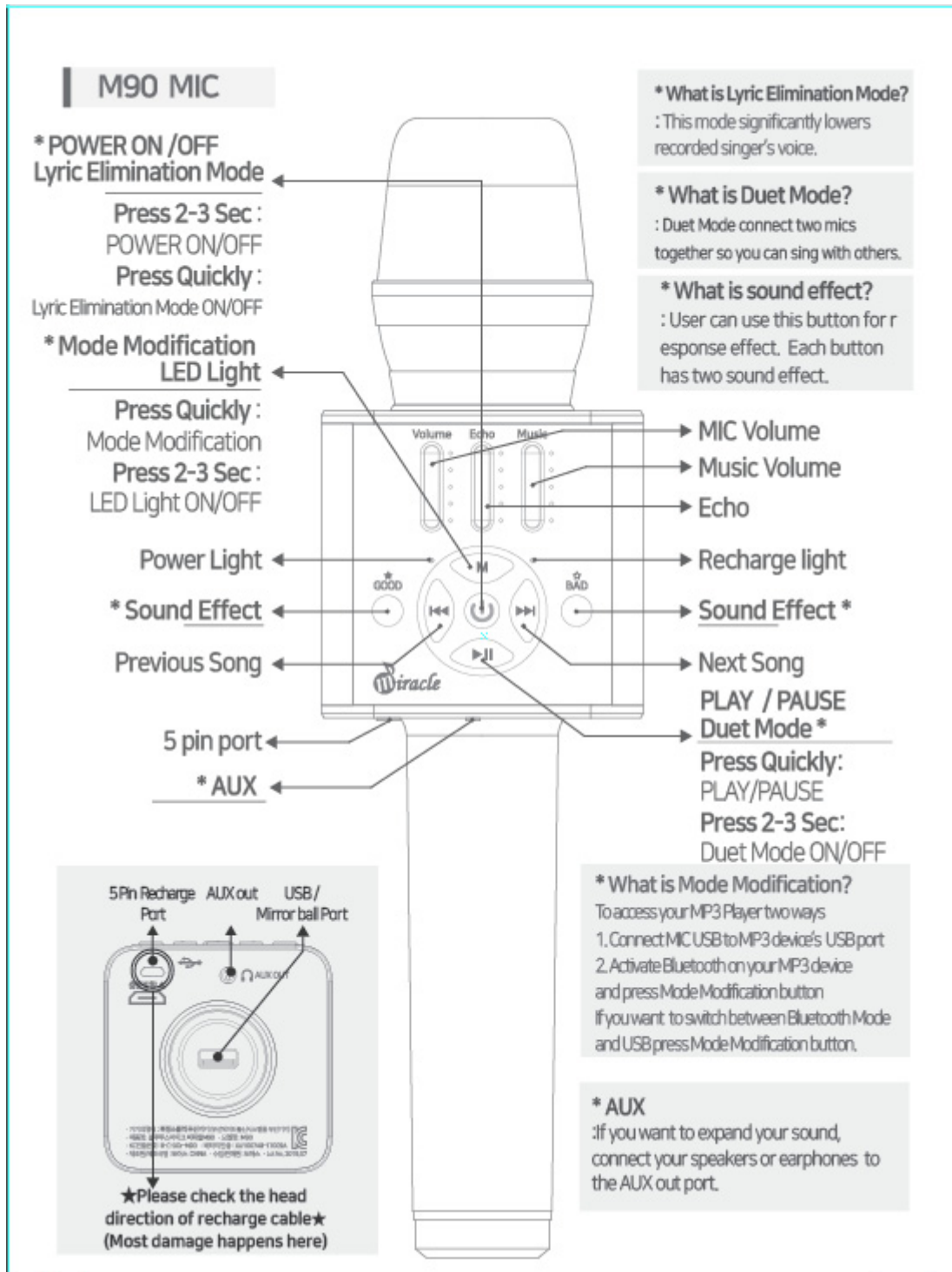


## M90 Manual

### Quick Directions

For more detailed directions see enclosed instructions

- Turn ON : Press Power button 2-3 seconds, green light will show
- Bluetooth Pairing: You can pair using Bluetooth
- Play Music: You can play music through a Smartphone APP.
- Volume Control: You can control Volume and Echo on demand.
- Lyrics Elimination Mode: This mode significantly lowers recorded singer's voice.
- Duet Mode: Connect two MICs together so you can sing with others.
- Turn ON / OFF : Press POWER 2-3 seconds
- Charge Cable: Connect 5 pin charging cable to charger or desktop USB.
- App : You can use any Smartphone APP to use this product.
- USB Play: you can play your own MP3 music stored in your USB. Please check description in enclosed manual



## How to Charge

- A. The Red Light is on during charging; when fully charged, the Red Light is off
- B. The included battery [in the package] is not fully charged. You may use the device after it is fully charged.

C. Microphone must be turned off when charging

1. Plug the micro USB port cable into the MIC port, and another port into a USB port.
2. A full charge usually take 4-6 hours
3. A fully charged Battery can be used for 3-4 hours

**Note:** The mic will automatically turn off when the battery charge is low.

\*\* Please note that charging times can vary depending on outside circumstance or battery condition

\*\*\* You can check the battery status on your Mobile phone if the MIC is connected through Bluetooth.

### **Duet Mode**

Duet Mode needs two mics.

1. Turn on both mics
2. Push the **PLAY** button for 2 -3 seconds on one of the mics. When the two MICS connect, there will be a confirmation sound.
3. Search Bluetooth devices on your smart phone and select **miracleM M90**.
4. Play music through a Smartphone, and enjoy **Duet Mode**
5. To disconnect **Duet Mode**, push the **PLAY** button for 2 – 3 seconds on one mic.

**Note:** **Duet Mode** and **Lyric Elimination Mode** features cannot be used together

**Duet Mode** is available when two MICs are within 2 meter [6.5 feet] of each other

### **Bluetooth Mode information**

To use **Bluetooth Mode**, you need to pair mic to your smart phone.

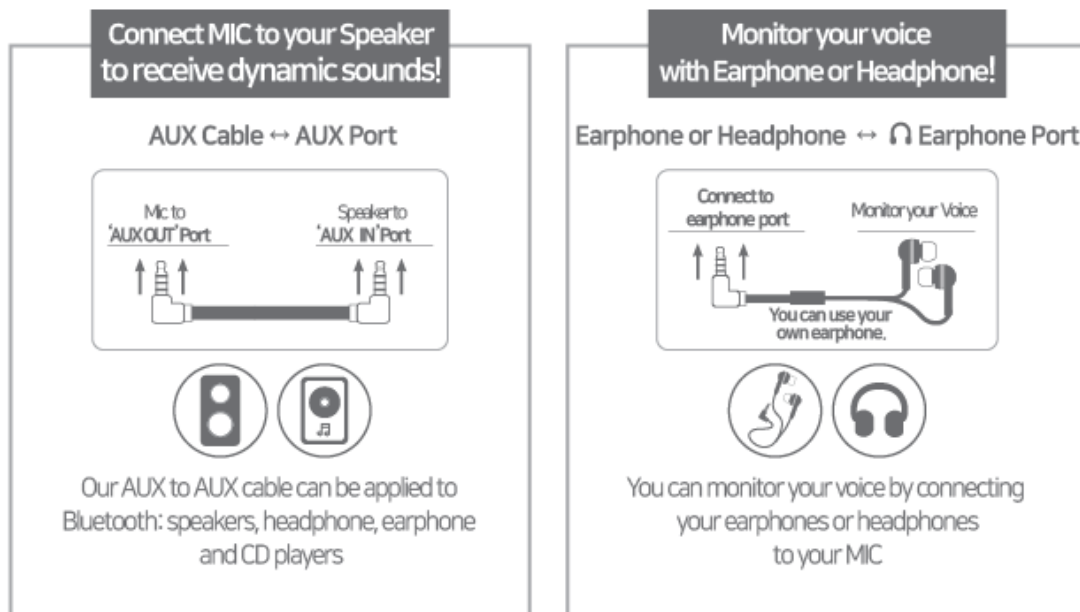
- A. To pair the mic properly, Smartphone and the MIC should be within 1 Meter [3 feet] to each other
- B. Once paired, the MIC can be used as microphone and speaker. If this process does not work, then turn off speaker and try again. Walls or partitions can affect Bluetooth pairing.

## How to pair the mic to a smart phone.

1. Press **POWER** button for 3 seconds. If it is paired, a green light will show.
2. Press **M37 POWER** button for 3 seconds confirmation sound and green light on. (After first pairing, it automatically pairs with a confirmation sound.)
3. In case your device asks for a **PASSWORD**, please type 0000. (Most smartphone will not need this)

Play **Music** with output cable.

### Guide **Cable connection Info**



## Audience Sound Effects

You can make some interesting Audience Sound Effects with your versatile MIC

Audience Sound Effects feature:

Push GOOD/BAD button (1 or 2 times)

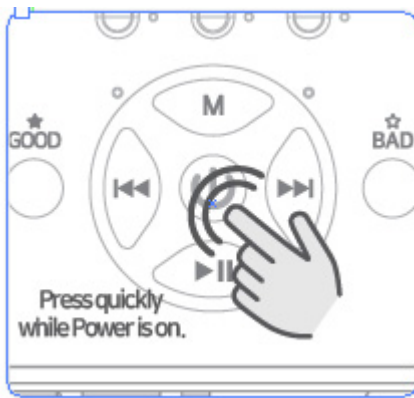
Press GOOD once for APPLAUSE / Press GOOD twice for FANFARE

Press BAD once for LAUGHTER / Press BAD twice for BOOING

How to access the LED Light feature

1. Turn on MIC, LED light will come ON.
2. Press Play / Pause button 2-3 Sec, LED light feature will turn OFF

### Lyrics Elimination Mode



What is Lyrics Elimination Mode?

1. If you want to sing a song but you cannot find a song from your APP, you can use Lyrics Elimination Mode
  2. Play the MP3 file you want to use and press **POWER button** one quick time, the lyrics will sound softer.
  3. To turn off **Lyrics Elimination Mode** press POWER button quickly. Then **Lyrics Elimination Mode** will then turn off with Miracle M making confirmation sound.
- A.** **Lyrics Elimination Mode** will work when it connected with Smartphone, but *does not work* with the Output cable connected. Also, **Lyrics Elimination Mode** does not work when you use the **Duet Mode** feature.
- B.** You do not need any additional APP to use **Lyrics Elimination Mode**.
- C.** **Lyrics Elimination Mode** cannot totally remove the recorded singers' voice, it will vary depending on the condition of the MP3 file.

FAQ

Status	Reasons	Solutions
Microphone not working	Can't be turned on or the voice volume can't be adjusted	Change the MIC, press power button 2-3 seconds and adjust the volume
No Reverberation	Unable to turn up echo volume	Switch to Echo volume and press VOL+
Presence of noise	Environmental noise mobile phone signal interference	Adjust the distance between microphone and Cellphone
Poor Recording	Phone does not match. Phone chip processing ability that is too weak	Restart the Smart Phone to try again or try another Smart Phone
When Playing music, staccato appears	Too Distant to Bluetooth connection or obstructions between phone and device	Move closer to Smart Phone, keep away from obstructions
Weak accompaniment sound	Low phone volume or bad-quality music	Turn up phone volume or download high-quality music
Bluetooth cannot be paired	Distant Bluetooth connection or already paired with another phone	Get closer to Smartphone or reconnect with another Smartphone..

## **FCC Information to User**

This equipment has been tested and found to comply with the limits for a Class B digital device, pursuant to Part 15 of the FCC Rules. These limits are designed to provide reasonable protection against harmful interference in a residential installation. This equipment generates, uses and can radiate radio frequency energy and, if not installed and used in accordance with the instructions, may cause harmful interference to radio communications. However, there is no guarantee that interference will not occur in a particular installation. If this equipment does cause harmful interference to radio or television reception, which can be determined by turning the equipment off and on, the user is encouraged to try to correct the interference by one of the following measures:

- Reorient or relocate the receiving antenna.
- Increase the separation between the equipment and receiver.
- Connect the equipment into an outlet on a circuit different from that to which the receiver is connected.
- Consult the dealer or an experienced radio/TV technician for help.

## **Caution**

Modifications not expressly approved by the party responsible for compliance could void the user's authority to operate the equipment.

**FCC Compliance Information :** This device complies with Part 15 of the FCC Rules. Operation is subject to the following two conditions: (1) This device may not cause harmful interference, and (2) this device must accept any interference received, including interference that may cause undesired operation