



Miracle, m M200 Wireless portable karaoke speaker

USER MANUAL

– 사용 설명서 –

the **Sing**
The Sing M200

USER GUIDE

- This device has completed a conformity test for business use, and radio interference can occur when used for family use.
 - Please read this manual carefully and follow directions.
 - Please keep this manual for future use.
-

 **도어스코리아**
www.doorskorea.com

☎ +82-2-1566-4520

Yeomgwang na-dong, 27, Mangu-ro 81-gil, Jungnang-gu, Seoul, Republic of Korea

Information for initial use

- ① Battery requires full charge when first use to maintain optimized battery capacity.
- ② **C-Type** charger with up to **1.8A** is required for charging.
- ③ When battery is being depleted, **the battery and circuit protection function is activated**. It will **lower the volume to base level** or shut down the product. You can continue to use this device when the battery is depleted by connecting to the charger.

How to Use Summary

- ① **Power ON:** Press and hold the Power button. The product powers on when LED is activated and guide sound commences.
(You can power on with the remote controller when connected to the charger)
- ② **Connect Bluetooth:** You can connect with the Bluetooth function on your smartphone.
(See related page)
- ③ **Play Music:** You can play music by running a smartphone applications.
- ④ **Adjust volume:** You can adjust volume and echo with remote controller or button on the speaker unit.
- ⑤ **Connect MIC:** The MIC connects to the speaker automatically when the speaker turns on. (If your speaker connection fails to auto connect, you can re-connect with a different frequency.)
- ⑥ **Dual MICs:** You can use as dual MICs by powering on MICs separately.
(It can also be used for a lecture.)
- ⑦ **Power OFF:** Press and hold power button on the remote controller or main unit.
- ⑧ **Use AUX cable:** You can deliver external or internal sound with Aux cable.
- ⑨ **Charge:** You can charge the speaker main unit with C-type charger connected to the product. (only 1.8A or above charger is required.)
- ⑩ **Various use :** This product has many features, such as, singing, lecture, meeting or small talks.
- ⑪ **Smartphone application compatiblet :** the product can be used for playing music or sound effects with various Smartphone applications.
- ⑫ **MP3 playing with USB memory stick :** You can play MP3 files contained in the USB memory stick.

Charging the product

- The **battery** is **embedded** in the **speaker main unit**. The **MIC** uses **AA-type batteries**.
- Please full charge the product when first use since the product has not been fully charged when manufactured.
- You should turn the product off during charging for proper charging process.

Required time to charge : 1.5 ~ 4 hours

Approx

(It depends on battery balance or charger capacity)

Operating time : 1.5 ~ 4 hours

Approx

(It depends on battery balance, volume and MIC usage)

- ① The product should remain off when charged for faster charging process.
- ② Connect C-type charger to the charging socket. (Charger not included in the product package)
- ③ Charging will begin when the battery balance display on the LED screen gradually blinks.
- ④ All three blocks on the battery balance display on the LED screen will show when fully charged.
- ⑤ It takes Approx. 1.5 to 4 hours to be fully charged. Blinking LED will stop when fully charged.
- ⑥ You can use 1.5 to 4 hours continuously after fully charged.



Please carefully check the socket direction when charge!

- ※ Display battery charging balance : Approx - 0~30% - 30~70% - 70~100%
- ※ Time required for charging is subject to battery balance / charging method / charging circumstances.
- ※ The battery circuit protection function can be activated when battery balance is lower than 60%.

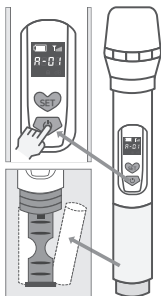
Caution

- The audio feedback effect can occur if you use the MIC and speakers too close to one another.
- When using Bluetooth function, the distance between devices should be less than 10m.
- Keep out of reach of children or animals and do not use in humid conditions or when in water. (ie: hot tubs, pools, bodies of water)
- Dropping the product could cause severe damage or malfunction.
- Use the product near heating equipment, fire or other hot items could cause severe damage of the product.
- Please maintain a temperature between -10~40°C when charge the product.

How to use MIC

1 Turn on the MIC & LED display information

- Press and hold the power button on the MIC to turn on the MIC.
- The frequency channel is automatically connected with the LED screen on the MIC turns on. (You can change the channel when the channel shows as OFF or there is no sound output)
- The MIC is connected accordingly if the connected channel is displayed on the LED screen and the 'A-ON' letter is displayed on the LED screen of the speaker.



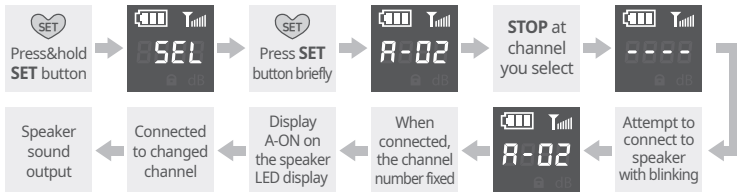
2 How to change battery in the MIC

Battery not included in the product

(Two(2) AA-type batteries required per product)

- You may open the battery insert part by turning the bottom side of the MIC.
- Put AA-type batteries into each side as described in the figure on the left and close the cover.

3 How to change the frequency channel



- 'SEL' blinks when press and hold the SET button on the MIC.
- You can move to the next channel every time you press the SET button.
- If you stop at the channel you like, the channel is automatically selected and it attempts to connect.
- When the connection is successful, sound outputs after the channel number on the MIC display fixed and 'A-ON' display is shown on the LED display on the MIC.





CHANNEL NUMBER
Blue MIC : A-01~20
Red MIC : B-21~40

4 Adjust MIC volume

- You can adjust the volume level by pressing the SET button on the MIC briefly.
- The volume can be adjusted from level 1 to 6.



5 Information on upper status line and channel lock

- ①  The battery balance display shows the balance of the battery.
- ②  The frequency signal status display shows the communication status between speaker and MIC.
- ③ You can use lock feature when you press and hold  and  together.

*What is Lock Feature? A function to cut off interfering frequencies around the transmission & reception.

How to pair Bluetooth

How to pair Bluetooth (This procedure is developed based on Android Smartphones.)

- Pair **The Sing M200** with Bluetooth function on the Smartphone.
- The distance between speaker main unit and the phone need to be less than 1M for good pairing.
- When failed to pairing, power off and restart the speaker and repeat the steps above.
- If auto pairing is not supported for certain Smartphone model, please follow the following steps for pairing.
- If failed to pairing at the first attempt, check pairings with other devices and release all pairings try pairing again.
- If you want to pair with other phone, release existing pairing and pair another phone with following steps.
- Do not pair devices where there is a warning to electromagnetic radiation such as hospital or airplane and where the use of the product is not permitted.
- Noise or abnormal operations can be observed due to obstacles such as a wall or partition.
- When the Bluetooth pairing is disconnected, a confirmation sound occurs.

How to connect Bluetooth(Pairing)

- ① Press and hold the power button at the side of **The Sing M200 speaker** main unit for 3 seconds to power on the system. The Bluetooth connection is in ready status with a confirmation sound.
(When power on, the speaker is paired to most recently connected device.)
- ② Push the Bluetooth icon on the Smartphone(Android) to activate the Bluetooth, and find the devices to add.
- ③ Find 'miracle, M the Sing M200-BT' model in the device list. (Push 'Find' button to search the model if the model does not appear in the list.)
- ④ When connected, a confirmation sound occurs.
- ⑤ Press and hold the '**Power**' button for 3 seconds after use. The product turns off with confirmation sound.

★ Please refer to how to use for each device since some devices have different setup procedure.

★ When power on, the speaker is paired to most recently connected device.

Information on LED Display on the front side

8888

Bluetooth Pairing Mode

8AUX

AUA Cable Connection Mode

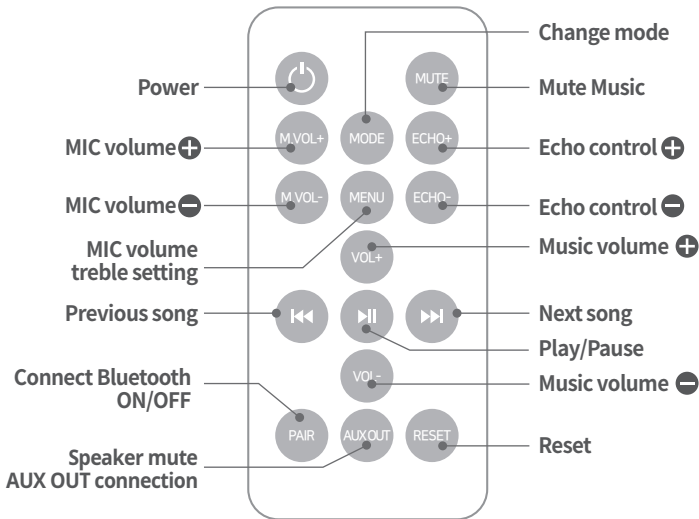
8-00

MIC Channel ON/OFF

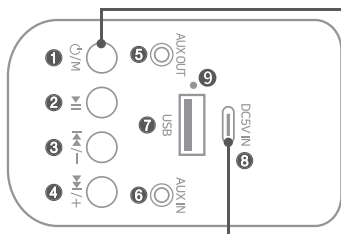


Information on Buttons on the Remote Controller

You can power on the product with the remote controller when the power is supplied from the external suppliers such as charger or external battery.



Information on the function of the button on the Speaker



Press and hold for 3 sec
★Power ON/OFF★

Mode changed in sequence
when clicking the button

BLUE | AUX

(Auto change when
connected in USB mode)

Be cautious when connecting to charging socket!
Most of the damages come from this connection!

- ① : Press and hold - Power ON & OFF / Press briefly - Change mode
- ② : Play / Pause
- ③ : Press & hold - Lower the volume / Press briefly - Play previous song
- ④ : Press & hold - Increase the volume / Press briefly - Play next song
- ⑤ **AUX OUT** : Audio output (The sound of the speaker is delivered to the external device)
- ⑥ **AUX IN** : Audio input (The speaker outputs sounds from external device)
- ⑦ **USB** : USB input
- ⑧ **DC5V IN** : Charging socket
- ⑨ **Battery reset hole**

Playing music with cables

Connect external speaker
to boost the sound~!

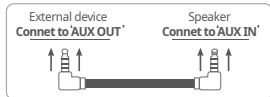
AUX Cable ↔ **AUX OUT Socket**



You can amplify the sound by connecting external devices such as **Bluetooth speaker, Audio device** with attached external output cable(AUX→AUX).

Connect external device
to our high-end speaker~!

AUX Cable ↔ **AUX IN Socket**

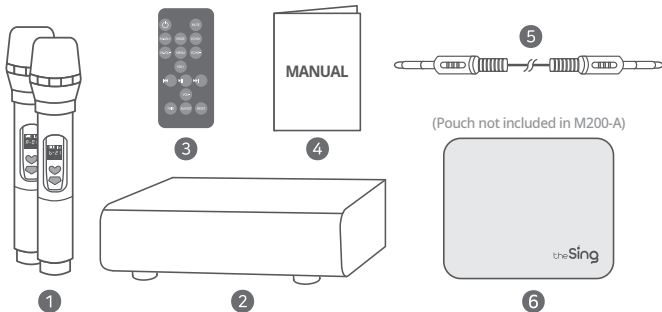


You can play music by connecting external devices such as Smartphone with **No Bluetooth function, Notebook, Computer**, etc with attached external output cable(AUX→AUX).

- ※ When connecting AUXOUT, sound output will be delivered both from internal and external speakers. If you want to have sound outputs only from the external speaker, press 'AUXOUT' button on the remote control to mute the internal speaker.
- ※ Control through the Smartphone directly if the button control to play is not available for the external device when connecting the external device.

Product Component

- ① 2 Wireless MIC ② Speaker main unit ③ Remote controller
 ④ User's Guide ⑤ AUX Cable (3.5mm+3.5mm) ⑥ Pouch



Specification

| | | | |
|----------------------|-------------------------|------------------------|---------------|
| Model | M200 | Bluetooth Ver | 5.0 |
| Rated Voltage | DC 5V / 7.4V / 2,500mAh | Output | 20W (MAX 40W) |
| Recharge hr | 1.5 ~ 4 hr | Usage hr | 1.5 ~ 4hr |
| Manufacturer | Doors China | Coutry of Orgin | Made in China |

| | |
|----------------------|---|
| Battery | XU101401-18006A / 18650-2,500mAh |
| KC | Spaker : R-R-DOR-Miracle-M200 MIC : R-R-DOR-Miracle-M900HA |
| Size / Weight | Product : (W)25cm x (D)9.5cm x (H)6cm / about 980g BOX : (W)29.5cm x (D)28.5cm x (H)12.5cm / about 2.1kg |
| Distributor | (주)도어스코리아 (Doors Korea) / Tel.1566-4520 Yeomgwang na-dong, 27, Mangu-ro 81-gil, Jungnang-gu, Seoul, Republic of Korea |

FCC Statement

This device complies with part 15 of the FCC rules. Operation is subject to the following two conditions: (1) this device may not cause harmful interference, and (2) this device must accept any interference received, including interference that may cause undesired operation.

Changes or modifications not expressly approved by the party responsible for compliance could void the user's authority to operate the equipment.

NOTE: This equipment has been tested and found to comply with the limits for a Class B digital device, pursuant to part 15 of the FCC Rules. These limits are designed to provide reasonable protection against harmful interference in a residential installation. This equipment generates uses and can radiate radio frequency energy and, if not installed and used in accordance with the instructions, may cause harmful interference to radio communications. However, there is no guarantee that interference will not occur in a particular installation. If this equipment does cause harmful interference to radio or television reception, which can be determined by turning the equipment off and on, the user is encouraged to try to correct the interference by one or more of the following measures:

- Reorient or relocate the receiving antenna.
- Increase the separation between the equipment and receiver.
- Connect the equipment into an outlet on a circuit different from that to which the receiver is connected.
- Consult the dealer or an experienced radio/TV technician for help.

The device has been evaluated to meet general RF exposure requirement. The device can be used in portable exposure condition without restriction.

ISED Statement

English: This device complies with Part 15 of the FCC Rules [and contains license-exempt transmitter(s)/receiver(s) that comply with Innovation, Science and Economic Development Canada's licence-exempt RSS standard(s)]. Operation is subject to the following two conditions: (1) this device may not cause harmful interference, and (2) this device must accept any interference received, including interference that may cause undesired operation.

The digital apparatus complies with Canadian CAN ICES-3 (B)/NMB-3(B).

French: L'émetteur/récepteur exempt de licence contenu dans le présent appareil est conforme aux CNR d'Innovation, Sciences et Développement économique Canada applicables aux appareils radio exempts de licence. L'exploitation est autorisée aux deux conditions suivantes:

(1) l'appareil ne doit pas produire de brouillage, et

(2) l'appareil doit accepter tout brouillage radioélectrique subi, même si le brouillage est susceptible d'en compromettre le fonctionnement.

l'appareil numérique du ciem conforme canadien peut - 3 (b) / nmb - 3 (b).

This device meets the exemption from the routine evaluation limits in section 2.5 of RSS 102 and compliance with RSS 102 RF exposure, users can obtain Canadian information on RF exposure and compliance.

cet appareil est conforme à l'exemption des limites d'évaluation courante dans la section 2.5 du cnr - 102 et conformité avec rss 102 de l'exposition aux rf, les utilisateurs peuvent obtenir des données canadiennes sur l'exposition aux champs rf et la conformité.

This equipment complies with Canada radiation exposure limits set forth for an uncontrolled environment.

Cet équipement est conforme aux limites d'exposition aux rayonnements du Canada établies pour un environnement non contrôlé.

RF Exposure Statement

The device has been evaluated to meet general RF exposure requirement. The device can be used in portable exposure condition without restriction.

L'appareil a été évalué pour répondre aux exigences générales d'exposition aux radiofréquences.

L'appareil peut être utilisé en condition d'exposition portable sans restriction.