

Zhejiang Tri mix Technology Co.,Ltd

Add: Floor No. 1, East of Fengnan Road, Fengqiao Town, Nanhu District, Jiaxing City,
Zhejiang Province, China

Tel.: +86 18957350126

Fax: +86 0573 83193106

E-mail: lidong@tri-mix.net

DECLARATION OF SIMILARITY

Date: 2020/12/18

FEDERAL COMMUNICATIONS COMMISSION

Authorization and Evaluation Division

7435 Oakland Mills Road

Columbia, MD 21046

We, Zhejiang Tri mix Technology Co.,Ltd, hereby declare that product:

Basic model : L04Y

Series model(technique-based change) : I06Y, J04Y, 914Y, 954Y, 923Y, N03Y, 443Y,
444Y, H13Y, H23Y, 152Y, K01Y, H02Y, 192Y, 442Y, M02Y, 542Y, K12Y, 132Y.

A description of the difference among those models and those that are declared similar are as follows:

1. The models L04Y, I06Y, J04Y, 914Y, 954Y, 923Y, N03Y, 443Y, 444Y, H13Y, H23Y are the same products, and they can control 4 motors.
2. The models 152Y, K01Y, H02Y, 192Y, 442Y, M02Y, 542Y, K12Y, 132Y are the same products, and they can only control 2 motors.
3. All of these models use the same wireless module, and they have the same electromagnetic emissions and similar electromagnetic compatibility characteristics.

Please contact me should there be need for any additional clarification or information.

Best Regards,

Printed Name: Dong Li

Title: Engineer *Dong Li*



These two interfaces are only used for engineering debugging and are not open to users.

Model: L04Y, I06Y, J04Y, 914Y, 954Y, 923Y, N03Y, 443Y, 444Y, H13Y, H23Y (Front)



Model: L04Y, I06Y, J04Y, 914Y, 954Y, 923Y, N03Y, 443Y, 444Y, H13Y, H23Y (Back)

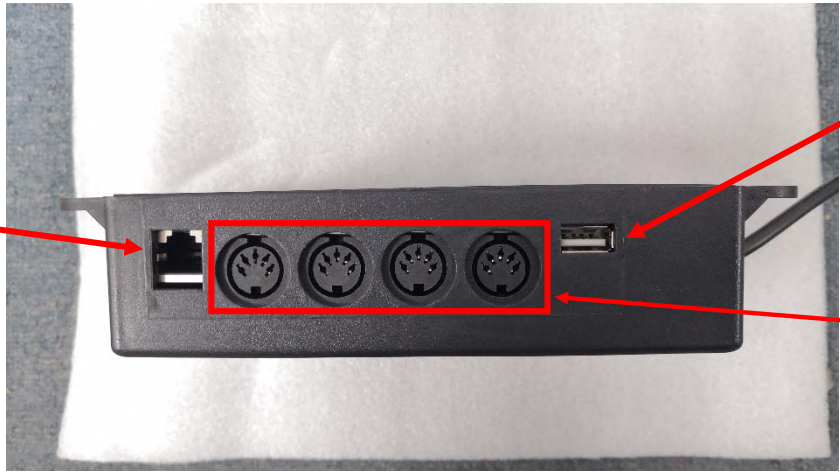


This port is only used for engineering debugging and is not open to users.

These two interfaces are only used for engineering debugging and are not open to users.

Model: L04Y, I06Y, J04Y, 914Y, 954Y, 923Y, N03Y, 443Y, 444Y, H13Y, H23Y (Side)

This port is only used for engineering debugging and is not open to users.



This USB port is only used for engineering debugging and is not open to users.

L04Y has 4 motor port and can connect 4 vibration motor.

Model: L04Y, I06Y, J04Y, 914Y, 954Y, 923Y, N03Y, 443Y, 444Y, H13Y, H23Y (Side)



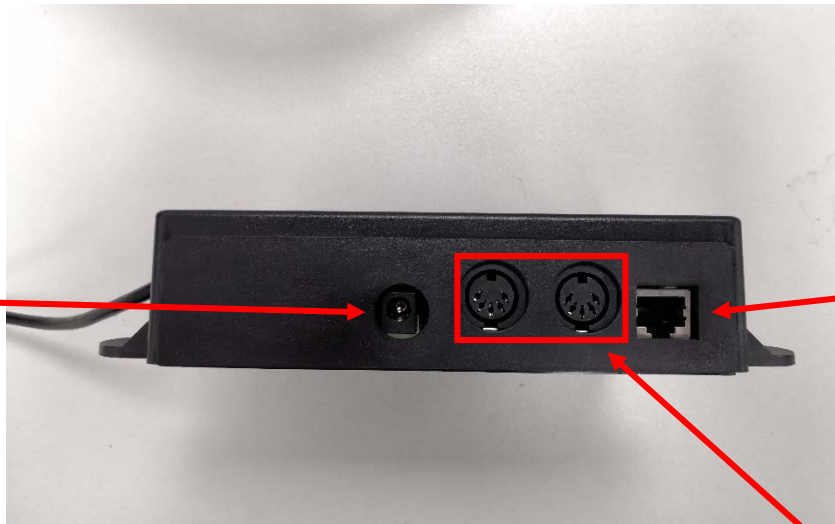
These two interfaces are only used for engineering debugging and are not open to users.

Model: 152Y, K01Y, H02Y, 192Y, 442Y, M02Y, 542Y, K12Y, 132Y (Front)



Model: 152Y, K01Y, H02Y, 192Y, 442Y, M02Y, 542Y, K12Y, 132Y (Back)

This port is only used for engineering debugging and is not open to users.

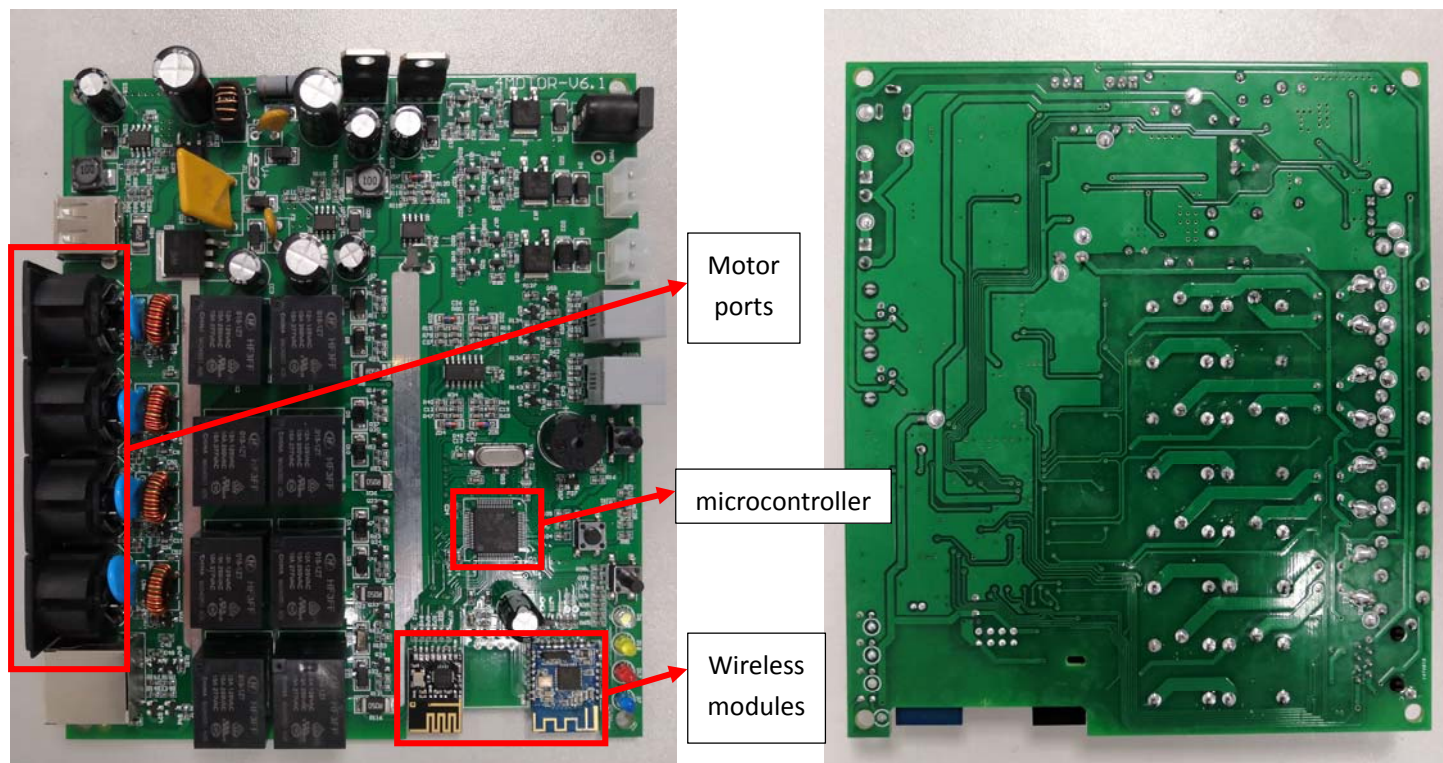


This port is only used for engineering debugging and is not open to users.

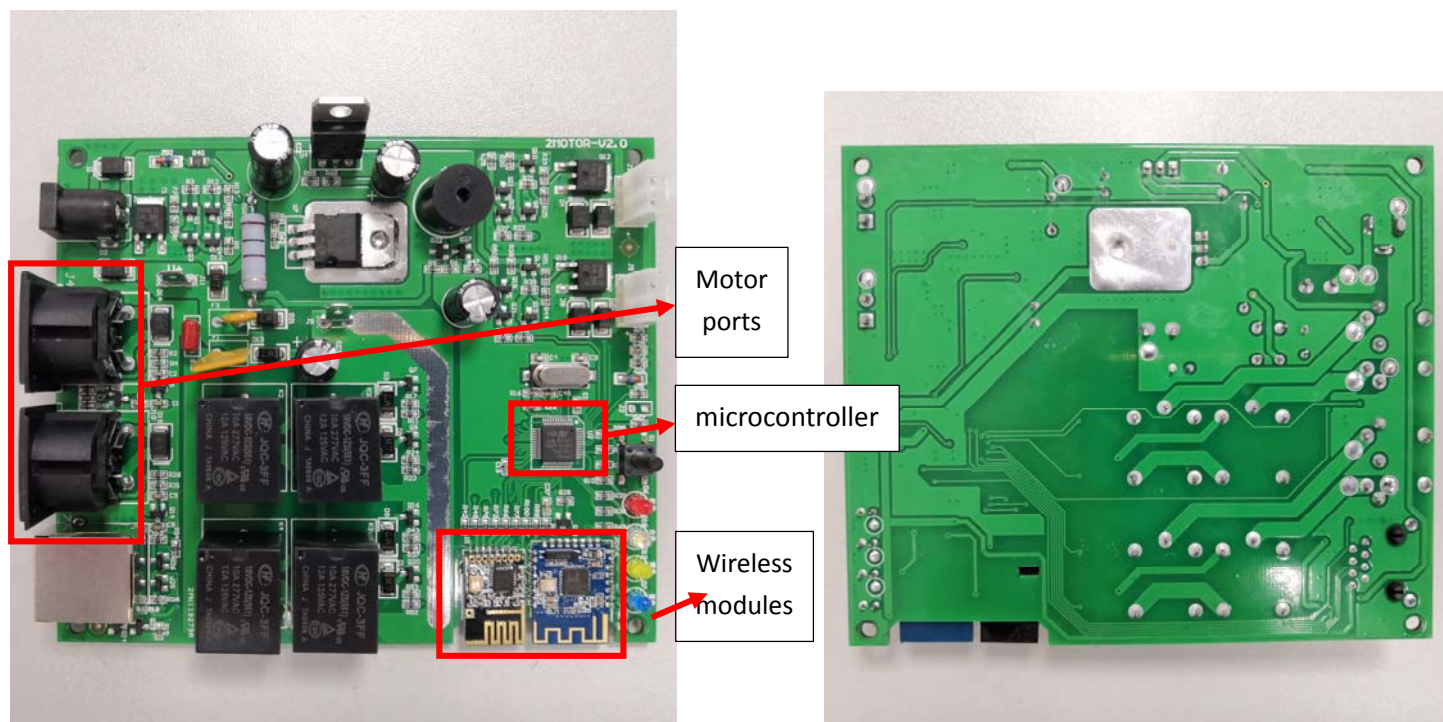
Model: 152Y, K01Y, H02Y, 192Y, 442Y, M02Y, 542Y, K12Y, 132Y (Side)

152Y has 2 motor port and can connect 2 vibration motor.

Different description of the PCB



Model: L04Y, I06Y, J04Y, 914Y, 954Y, 923Y, N03Y, 443Y, 444Y, H13Y, H23Y



Model: 152Y, K01Y, H02Y, 192Y, 442Y, M02Y, 542Y, K12Y, 132Y

1. All of these models use the same wireless modules: bluetooth and 2.4G RF modules.
2. The models L04Y, I06Y, J04Y, 914Y, 954Y, 923Y, N03Y, 443Y, 444Y, H13Y, H23Y are the same products, and they can control 4 motors.
3. The models 152Y, 152Y, K01Y, H02Y, 192Y, 442Y, M02Y, 542Y, K12Y, 132Y are the same products, and they can only control 2 motors.