

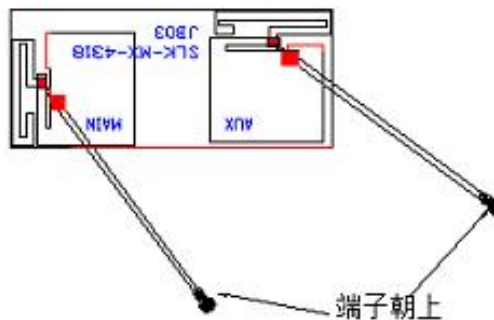
WIFI Antenna (4318)

1. Explanation of Product number :

S L K - M X - 4 3 1 8 - R - 1 2 0 I V - B

S L K - M X - 4 3 1 8 - R - 7 5 I V - G

1 2 3 4 5



Product Code:

(1) Customer:

MX:茂现

(2) Project:

4318: SLK-MX-4318(WIFI antenna 2.4~2.5GHz 5~5.85GHz)

(3) Welding Position

R:Right R:Right

(4) Cable Length:

120IV:120*0.81MM 75IV:75*0.81MM

(5)Cable Color

B: Black G: Grey

2. Features

- *Stable and reliable in performances
- *Compact size
- *RoHS compliance

3. Applications

- * IEEE802.11 (b/g/n/a)
- * Hand-held devices when WIFI (802.11b/g/n/a) functions are needed

4. Description

Holy bond's External antenna series are specially designed for WIFI (802.11 b/g/n/a) applications. Based on Holy bond's proprietary design and processes, this External antenna has excellent stability and sensitivity to consistently

provide high signal reception efficiency.

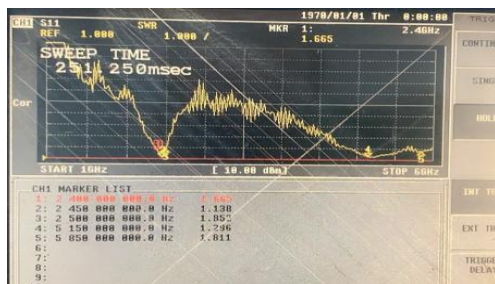
5. Electrical Specifications

5-1

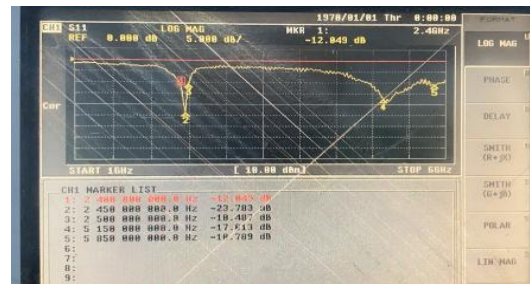
Characteristics	Specifications	Unit
Outline Dimensions	43.2*18.51*0.12	mm
Bandwidth(under-10dB return loss)	130min	MHz
VSWR	3max	

5-2

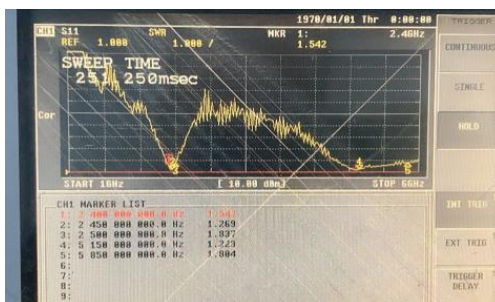
Main - VSWR



Main - S11



Aux - VSWR

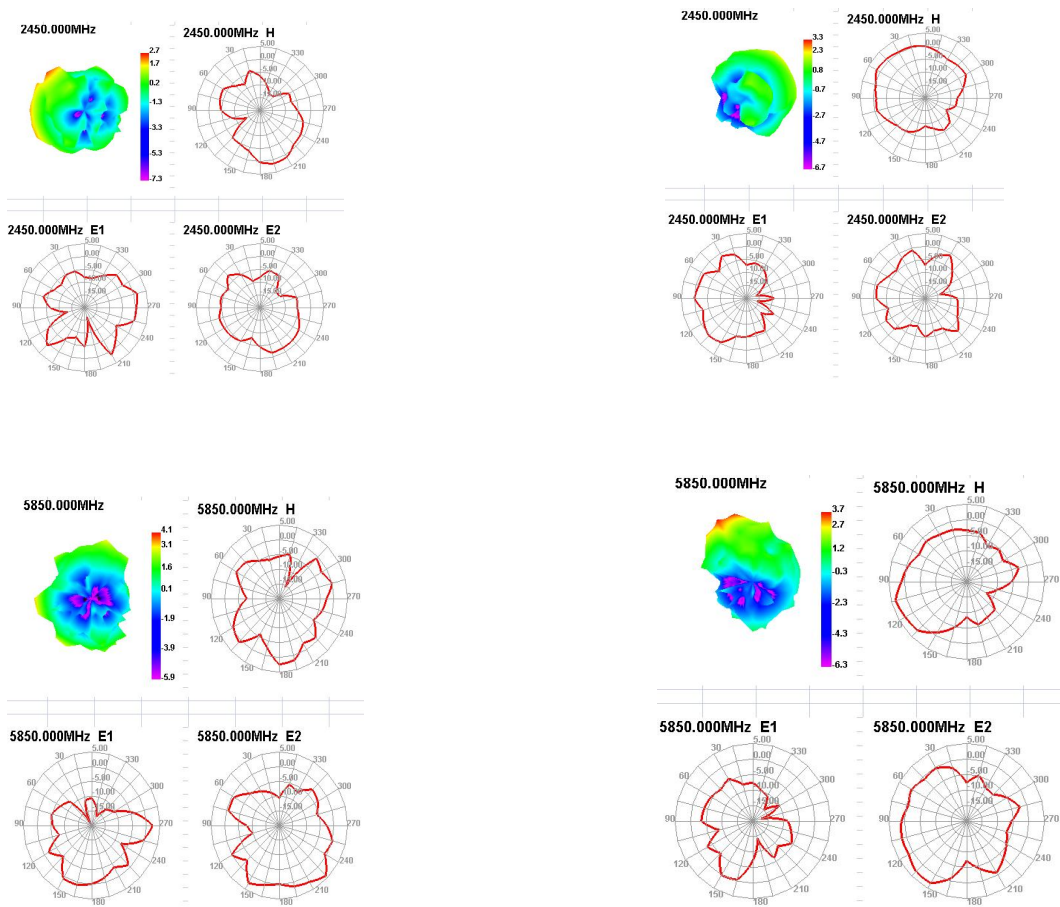


Aux - S11

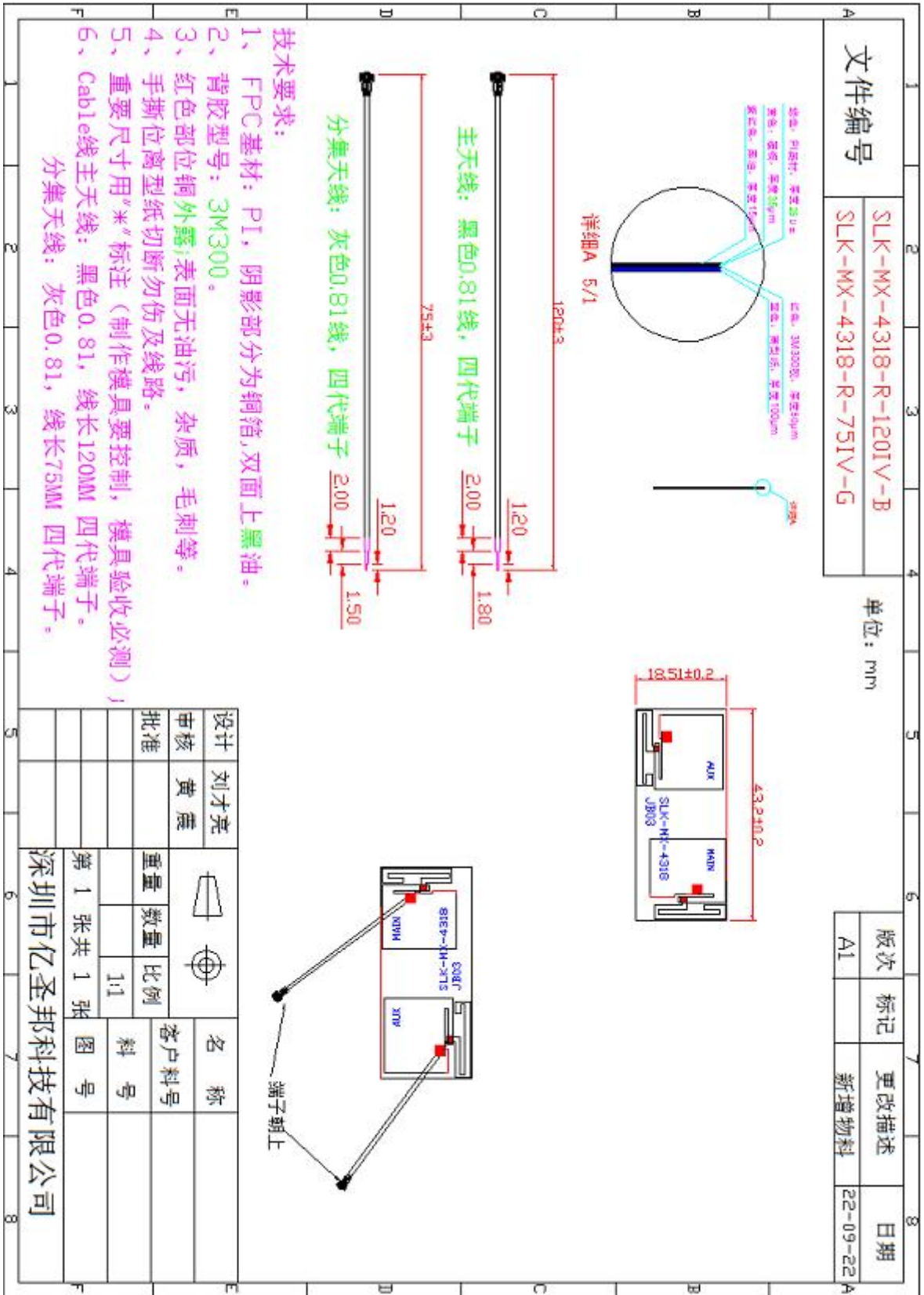


5-3.WIFI Antenna Gain/Efficiency/Radiation Pattern of 3D

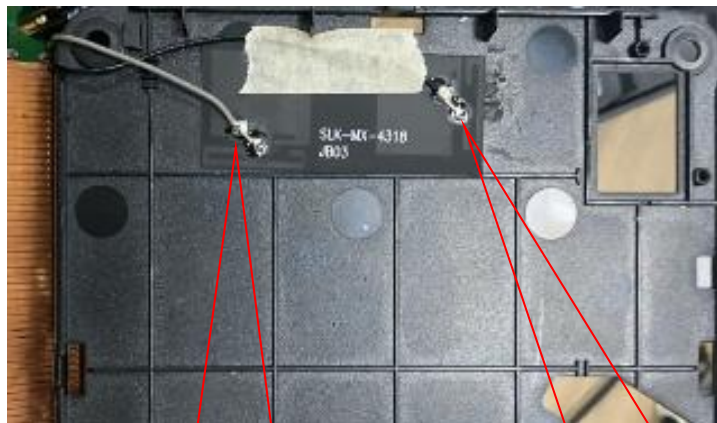
Freq (MHz)	Effi (%)	Gwin (dBi)
2400	48.75	1.26
2450	42.27	1.98
2500	43.05	1.83
5150	52.77	1.29
5350	54.20	1.49
5500	50.12	1.54
5650	51.88	1.02
5750	46.89	1.99
5850	53.05	1.42



6. Antenna Dimensions (unit: mm)



7. Antenna Picture



WIFI Aux

WIFI Main