

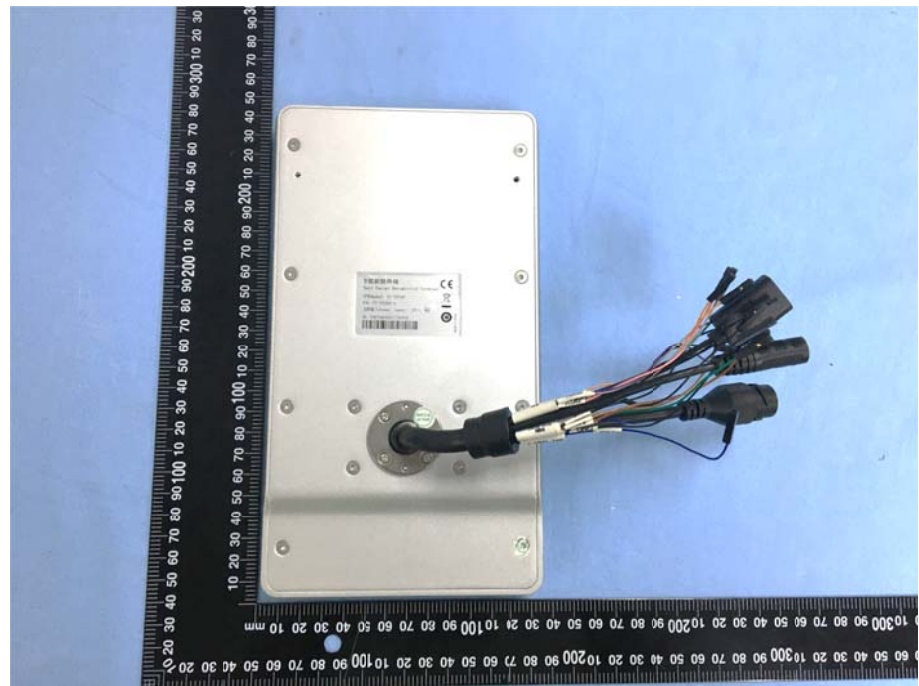


ANNEX

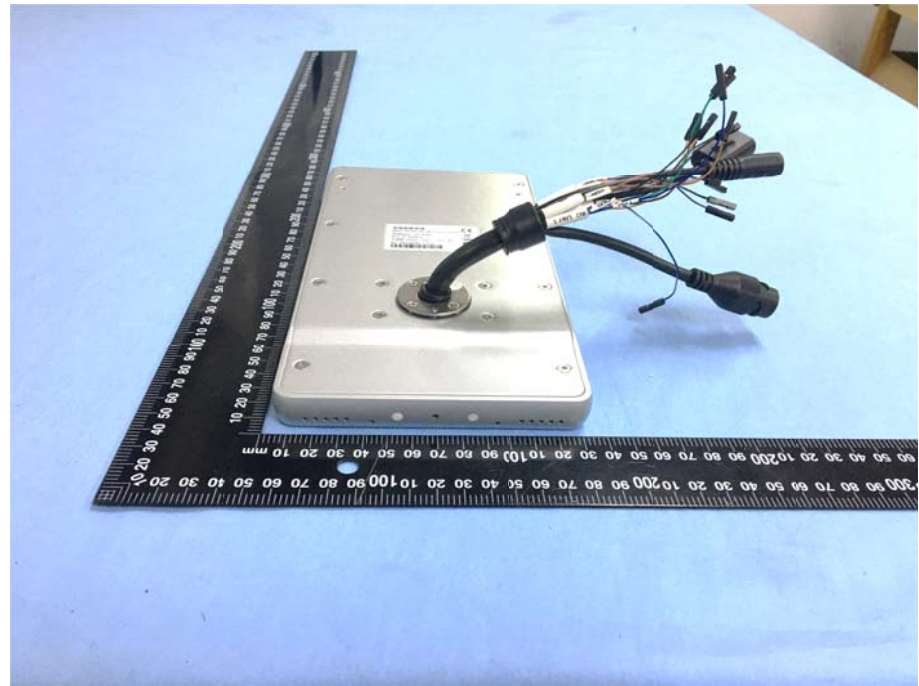
EXHIBIT 1 - EUT EXTERNAL PHOTOGRAPHS

<p>EUT View 1</p>	 <p>A photograph showing a black rectangular Electronic Under Test (EUT) device lying vertically on a blue surface. To the left of the device is a black ruler with white markings in millimeters. To the right of the device are several black cables and a black power supply unit. The power supply unit has a label with technical specifications. The ruler is oriented vertically, with the 0 mark at the top and the 400 mark at the bottom.</p>
<p>EUT View 2</p>	 <p>A photograph showing a close-up view of the black rectangular EUT device. The device is positioned vertically on a blue surface. To its left is a black ruler with white markings in millimeters. To its right, several black cables are visible, some connected to the device. The ruler is oriented vertically, with the 0 mark at the top and the 400 mark at the bottom.</p>

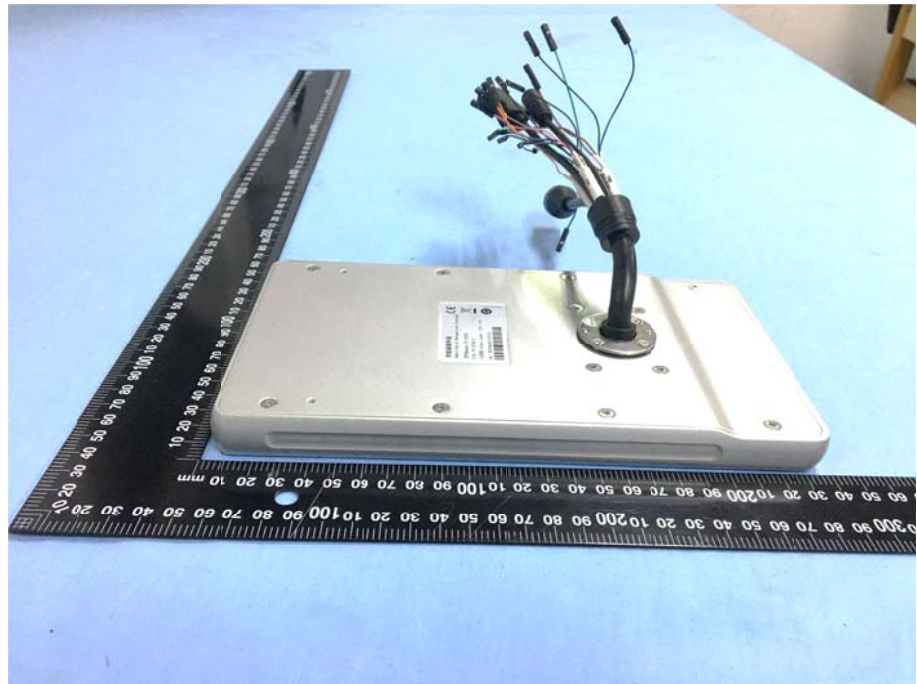
EUT View 3



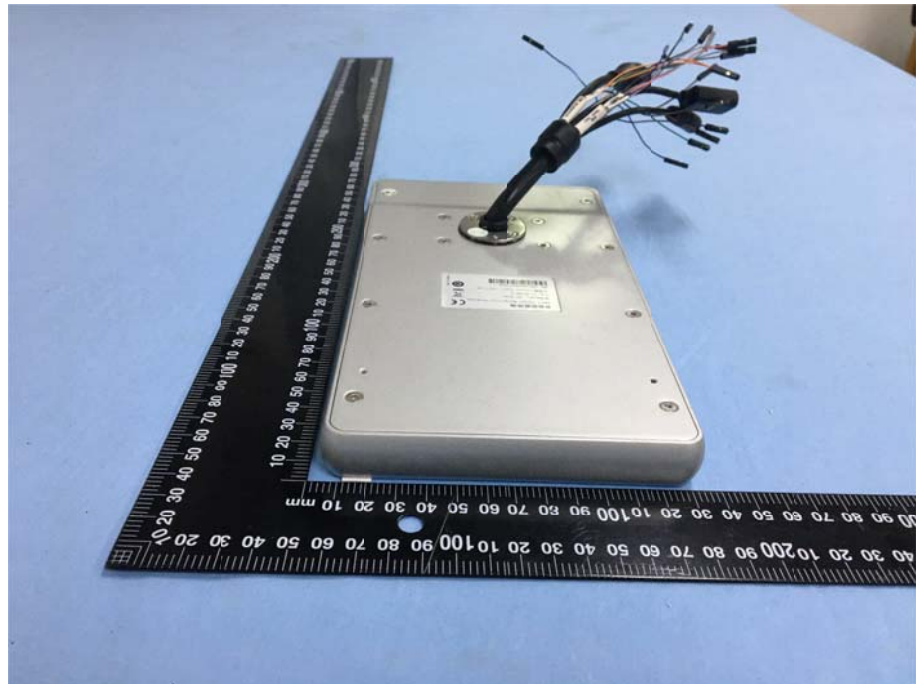
EUT View 4



EUT View 5



EUT View 6



EUT View 7

