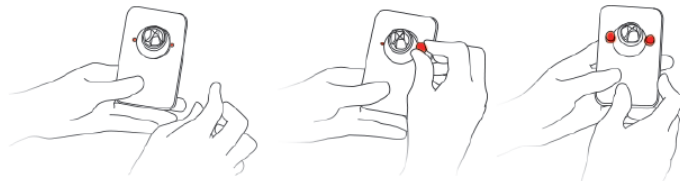


User manual

- Product Name : BeraShield Charger
- Model Name : BC03AI01
- FCC ID: 2AXTGBC03AI01

BeraShield Charger | How to use

How to fix the multi-functional mount



Attach the multi-functional mount to the back of the BeraShield Charger

Fix the mount to the Charger with two screws.

How to charge

Please check the circular charging zone of the BeraShield Charger and place the device you want to charge.
(Not all devices support wireless charging. Please check it before using.)
When the device is placed on the charging zone, the LED turns on.
It indicates that the charger works normally.
If it does not charge properly, please check again to see if the devices supports wireless charging, and move up, down, left, and right little by little around the charging area (to find the right position).
The fast charging only works with adapters greater than 5V, 9V input voltage.
Only when the device is fully charged, the charger is turned off.
It is due to the overcharging prevention circuit to protect the device.

Safety Instructions

Please check the manual before use.
Do not keep magnetic sensitive products close. / The product may break down.
Children should explain their usage before use. / Injury may occur.
Do not place anything on top of the product when not in use. / Fire may occur.
Do not use at temperatures below -20 degrees Celsius and above 40 degrees Celsius / It may cause malfunction and fire.
Do not expose the product to direct sunlight. / Overheating and fire may occur.
Please use normal product and charge. / It may cause malfunction
Do not exceed the rated value when using the product. / There is a risk of fire.
Do not damage the product / Continued use of the product may cause fire, electric shock, or overheating.
Do not charge more than three batteries at the same time. / Overheating may occur.
Do not charge with foreign substances in contact with the product. / Overheating and fire may occur.
Do not use adapter for other purposes. / May cause overheating and electric shock.
Please remove the plug when not in use. / May cause fire and electric shock.

User manual

Warning

Failure to comply with safety warnings and regulations can cause serious injury or death

Do not use your device outdoor during a thunderstorm

Doing so may result in electric shock or device malfunction.

Do not drop or cause an impact to the charger or the device

Handle and dispose of the device and charger with care

Never crush or puncture the device.

Avoid exposing the device to high external pressure, which can lead to an internal short circuit and overheating.

Do not bite or suck the device or the battery

Doing so may damage the device or result in an explosion or fire.

Children or animals can choke on small parts.

If children use the device, make sure that they use the device properly.

Do not insert the device or supplied accessories into the eyes, ears, or mouth

Doing so may cause suffocation or serious injuries.

The device contains magnets. The American Heart Association (US) and the Medicines and Healthcare Products Regulatory Agency (UK) both warn that magnets can affect the operation of implanted pacemakers, cardioverters, defibrillators, insulin pumps or other electro medical devices (collectively, "Medical Device") within the range of 15 cm (6 inches). If you are a user of any of these Medical Devices, DO NOT USE THIS DEVICE UNLESS YOU HAVE CONSULTED WITH YOUR PHYSICIAN

Caution

Failure to comply with safety cautions and regulations can cause injury or property damage

Turn off the device in potentially explosive environments

Turn off your device in potentially explosive environments instead of removing the battery.

Always comply with regulations, instructions and signs in potentially explosive environments.

Do not use your device at refuelling points (petrol stations), near fuels or chemicals, or in blasting areas.

Do not store or carry flammable liquids, gases, or explosive materials in the same compartment as the device, its parts, or accessories.

Care and use your device properly

Do not store your device near magnetic fields

Your device may malfunction or the battery may discharge from exposure to magnetic fields.

Magnetic stripe cards, including credit cards, phone cards, passbooks, and boarding passes, may be damaged by magnetic fields.

Prolonged exposure of your skin to an overheated device may cause low temperature burn symptoms, such as red spots and pigmentation

Do not disassemble, modify, or repair your device

Copyright

Copyright © 2020 Smart Guardians Inc.

This manual is protected under international copyright laws.

No part of this manual may be reproduced, distributed, translated, or transmitted in any form or by any means, electronic or mechanical, including photocopying, recording, or storing in any information storage and retrieval system.

Trademarks

BeraShield and the BeraShield logo are registered trademarks of Smart Guardians Inc.

All other trademarks and copyrights are the property of their respective owners.

User manual

FCC Compliance Statement

This device complies with part 15 of the FCC rules. Operation is subject to the following two conditions: (1) This device may not cause harmful interference, and (2) this device must accept any interference received, including interference that may cause undesired operation.

FCC Interference Statement

This equipment has been tested and found to comply with the limits for a Class B digital device, pursuant to part 15 of the FCC Rules. These limits are designed to provide reasonable protection against harmful interference in a residential installation. This equipment generates, uses and can radiate radio frequency energy and, if not installed and used in accordance with the instructions, may cause harmful interference to radio communications. However, there is no guarantee that interference will not occur in a particular installation. If this equipment does cause harmful interference to radio or television reception, which can be determined by turning the equipment off and on, the user is encouraged to correct the interference by one of the following measures:

- Reorient or relocate the receiving antenna.
- Increase the separation between the equipment and receiver.
- Connect the equipment into an outlet on a circuit different from which the receiver is connected.
- Consult the dealer or an experienced radio/TV technician for help.

FCC Caution

Any changes or modifications not expressly approved by the party responsible for compliance could void the user's authority to operate this equipment. This transmitter must not be co-located or operating in conjunction with any other antenna or transmitter.

FCC Radiation Exposure Statement

This equipment complies with FCC radiation exposure limits set forth for an uncontrolled environment. This equipment should be installed and operated with minimum distance 20 cm between the radiator and your body. This transmitter must not be co-located or operating in conjunction with any other antenna or transmitter.