

EUT External Photos

Figure 1  
General Appearance (Front and Side View)



Figure 2  
General Appearance (Back and Side View)



Figure 3  
Barcode Scanner mPAD, General Appearance (Front, Top & Side View)



Figure 4  
Barcode Scanner mPAD, General Appearance (Back, Bottom & Side View)

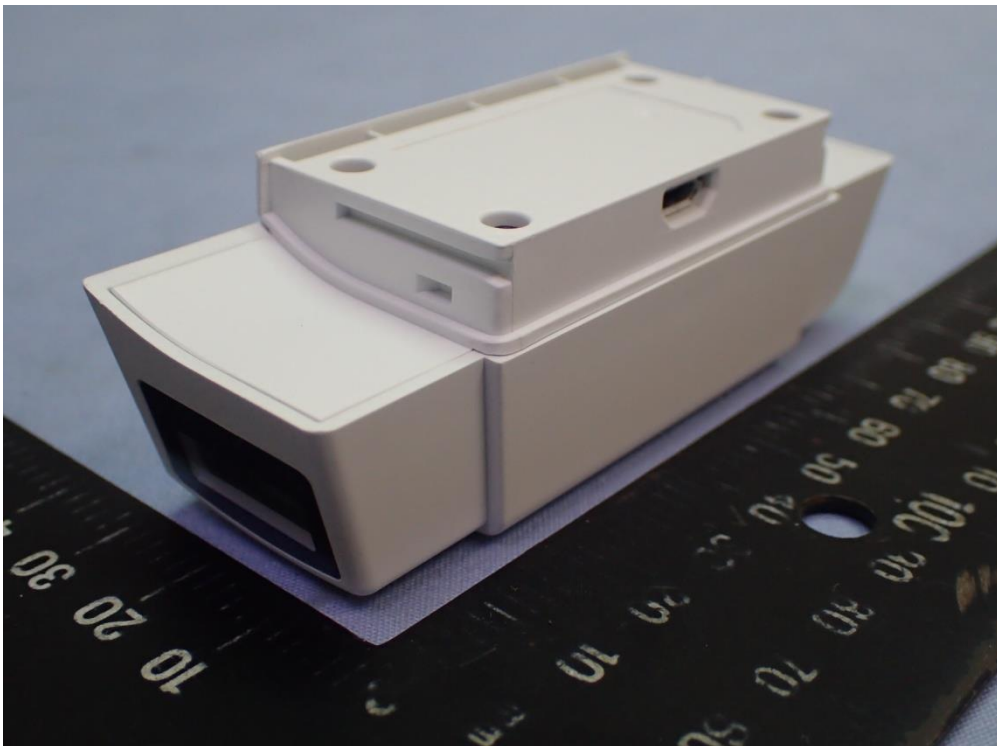


Figure 5  
SCR mPAD, General Appearance (Front, Top & Side View)



Figure 6  
SCR mPAD, General Appearance (Back, Bottom & Side View)

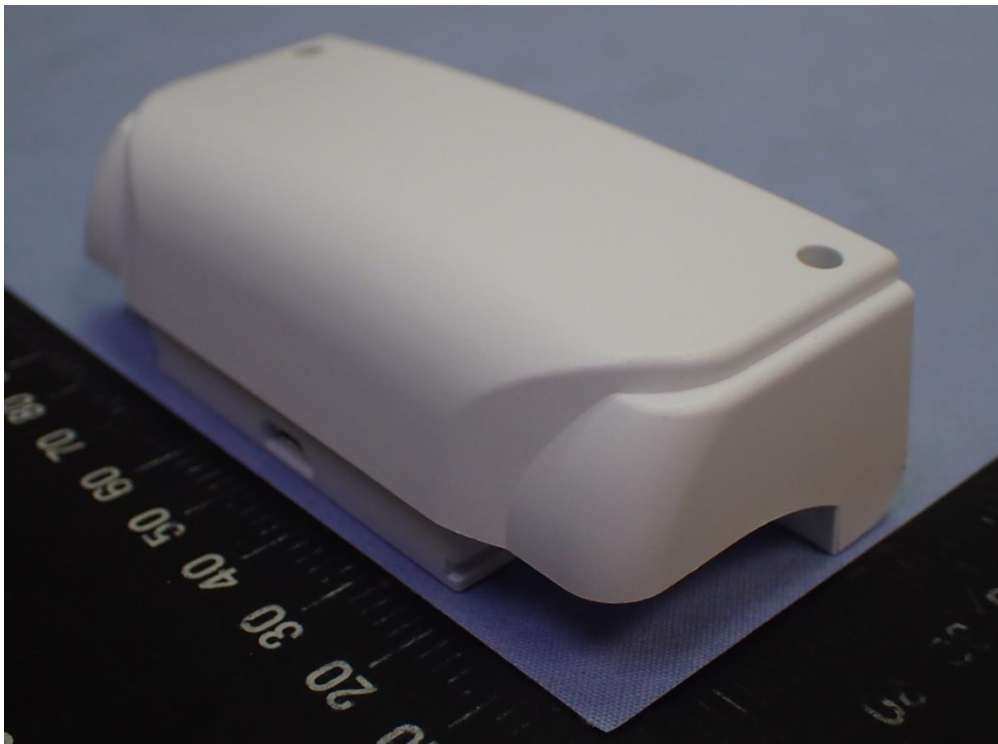


Figure 7  
MSR Module, General Appearance (Front, Top & Side View)

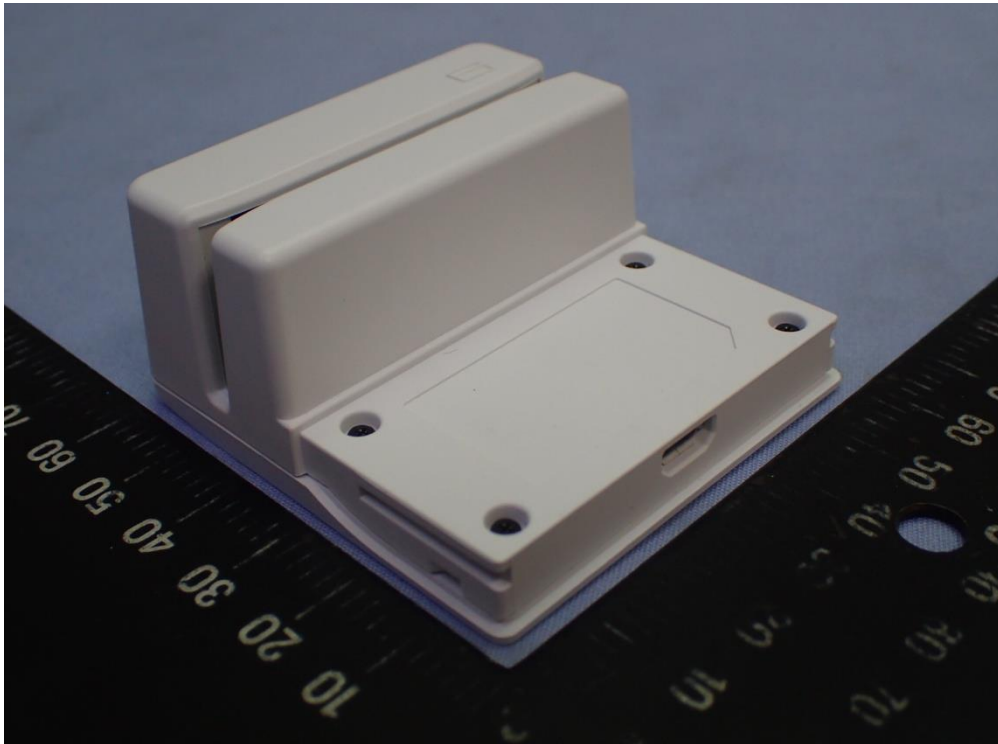


Figure 8  
MSR Module, General Appearance (Back, Bottom & Side View)

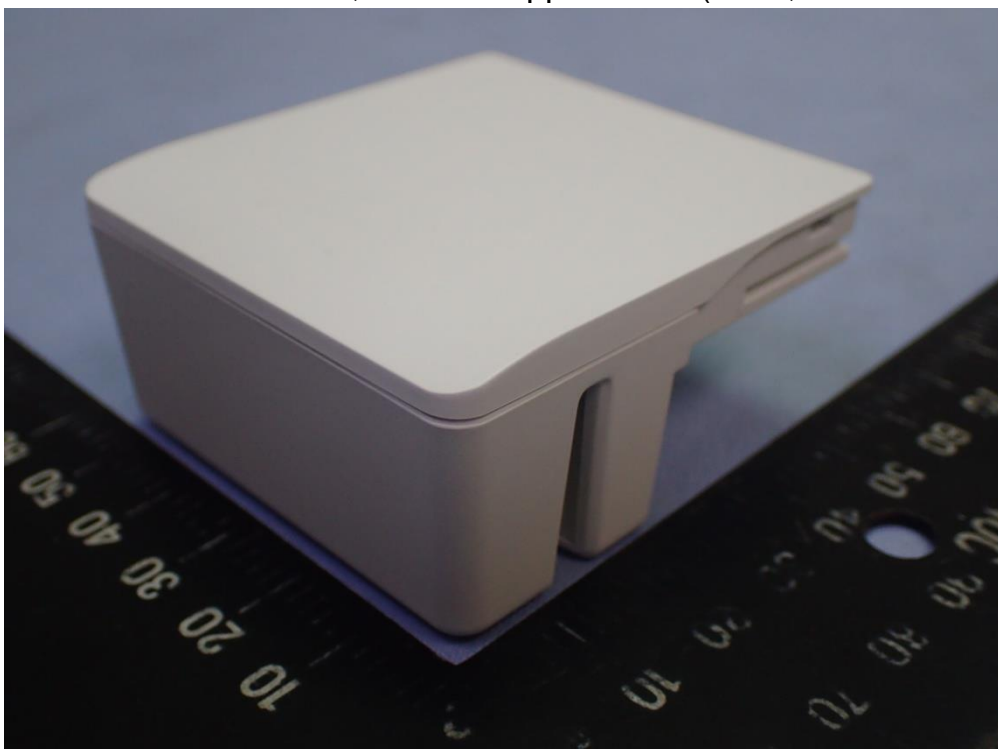


Figure 9  
USB Ethernet mPAD, General Appearance (Front, Top & Side View)

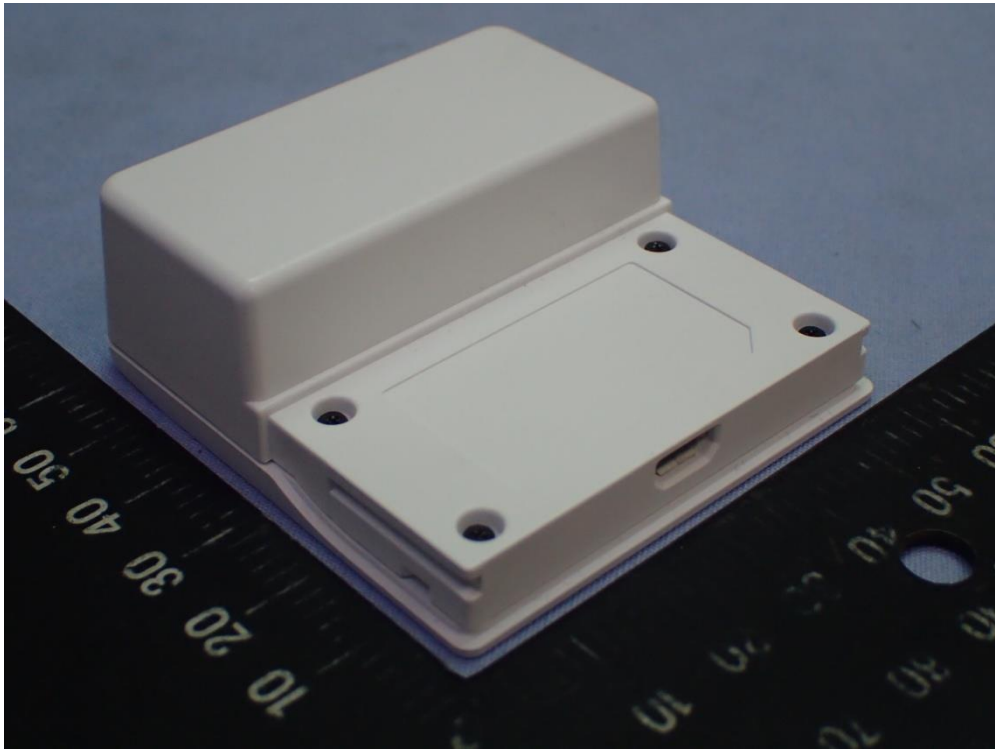


Figure 10  
USB Ethernet mPAD, General Appearance (Back, Bottom & Side View)



Figure 11  
7" Pad Docking, General Appearance (Front View)

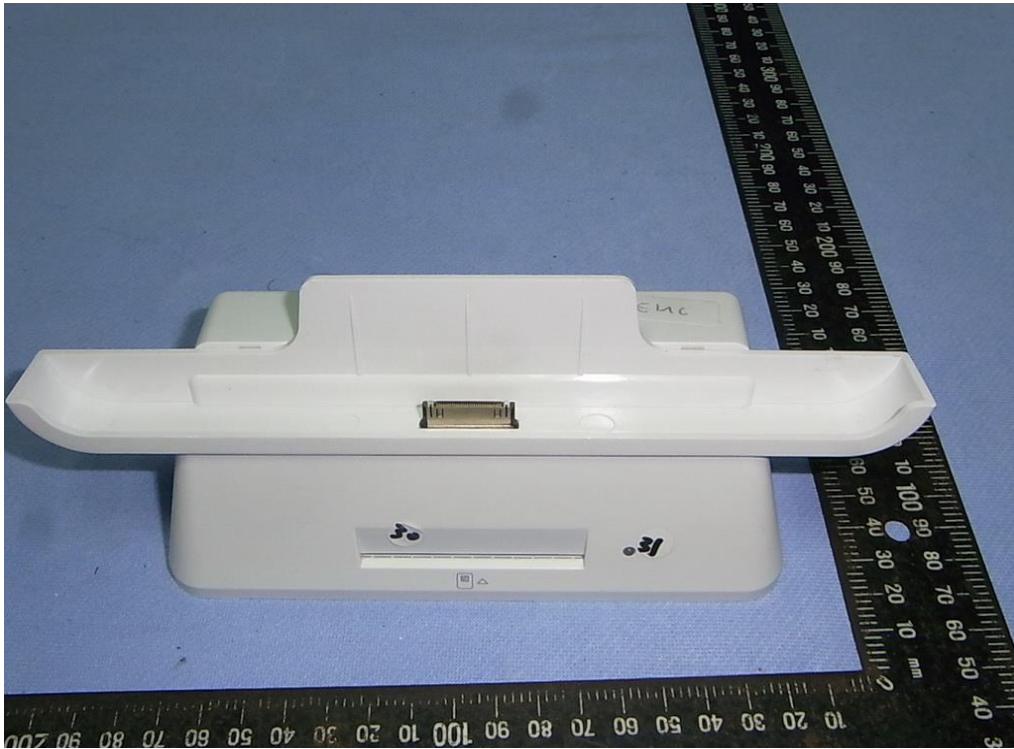


Figure 12  
7" Pad Docking, General Appearance (Back View)



Figure 13  
7" Pad Docking, General Appearance (Top View)



Figure 14  
7" Pad Docking, General Appearance (Bottom View)

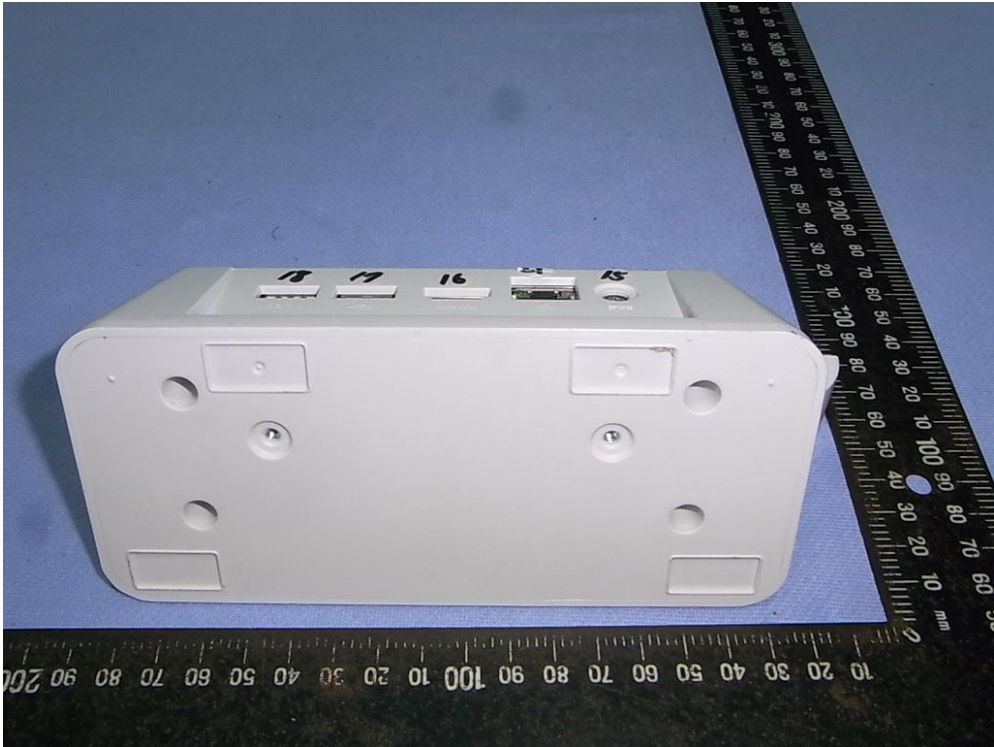


Figure 15  
AC Adapter, General Appearance (Front, Top & Side View)



Figure 16  
AC Adapter, General Appearance (Back, Bottom & Side View)

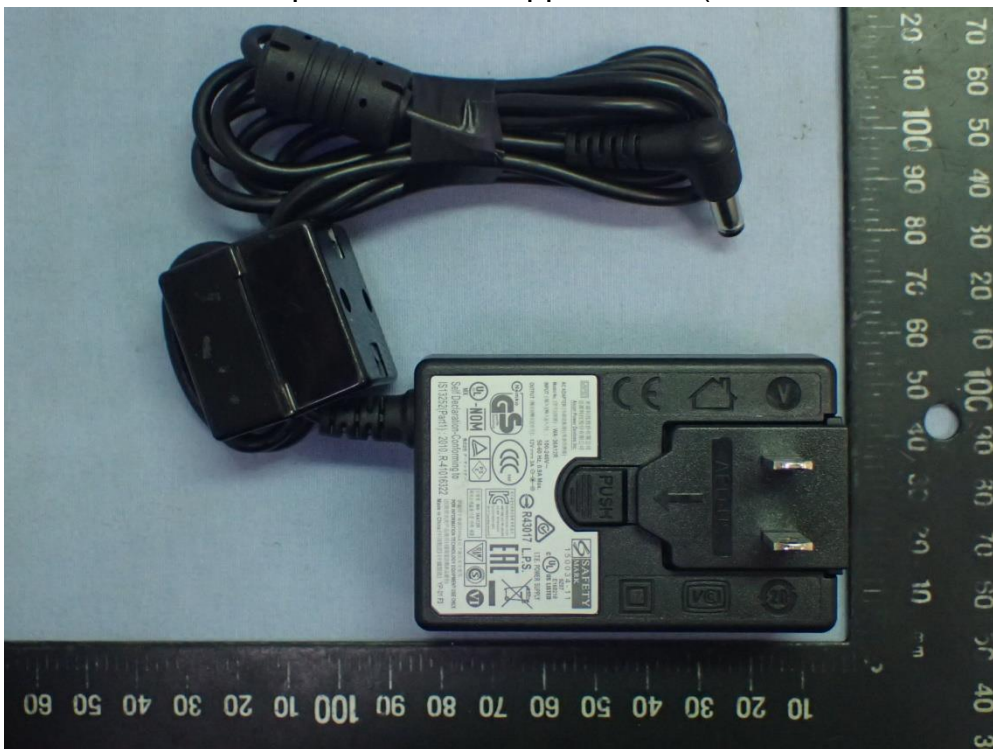




Figure 17  
30 Pin to USB Cable



Figure 18  
30 Pin to HDMI Cable

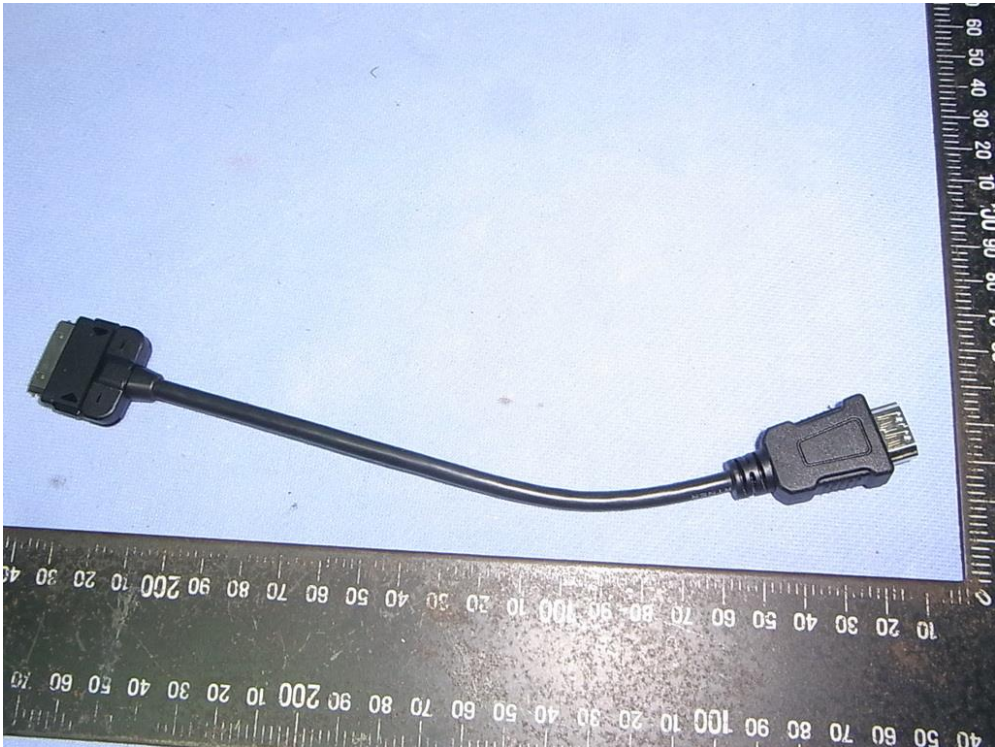


Figure 19  
30 Pin to DC Jack Cable

