



 AutoTRON

MAS1227

User's Manual



Copyright Notice

The information in this document is subject to change without prior notice in order to improve reliability, design and function and does not represent a commitment on the part of the manufacturer.

In no event will the manufacturer be liable for direct, indirect, special, incidental, or consequential damages arising out of the use or inability to use the product or documentation, even if advised of the possibility of such damages.

This document contains proprietary information protected by copyright. All rights are reserved. No part of this manual may be reproduced by any mechanical, electronic, or other means in any form without prior written permission of the manufacturer.

Trademarks

All registered trademarks and product names mentioned herein are used for identification purposes only and may be trademarks and/or registered trademarks of their respective owners.

Revision	Date	Comment
Rev. 00	2020/08/17	Release

Thank you for choosing MACTRON Tablet

This instruction serves to enable users to get to know our product as soon as possible. Here we have made a brief introduction to the key layout and definitions in figures and words. And a brief explains for the basic operating functions

Attention:

1. The instructions in this guide refer to the windows 10 system. If you are using other windows operating systems, some operations may be slightly different. If you are using another windows operating system, some operations may not suit you.
2. The instructions describe the general functions of most models. Your computer may not have some functionality, or some features on your computer are not described in the manual.
3. This instruction applies the following models: MAS1227 rugged tablet.
4. The illustrations in this instruction may be different from the product itself.

Packing List

- MAS1227 x1
- Strap x 1
- Handle Strap x 1
- Plastic Pry tool x 1
- Power Adapter 12V/4A x 1

CONTENT

1. Product Information	1
1.1 SPECIFICATIONS	1
1.2 PRODUCT OVERVIEW.....	2
1.3 INTERFACE DESCRIPTION	3
2. Device Initialized Setting.....	7
2.1 LANGUAGE SETTING	7
2.2 KEYBOARD LAYOUT AND LANGUAGE SETTING.....	8
2.3 USER LICENSE AGREEMENT	9
2.4 NETWORK SETTING	10
2.5 USERNAME AND PASSWORD SETTINGS	11
2.6 PERSONALIZED SETTING	12
2.7 COMPLETE SETTING.....	13
3. Desktop Layout.....	14
3.1 WINDOWS 10 STARTUP DESKTOP	14
3.2 CHARM MENU BAR.....	15
3.3 APP INTERFACE INTRODUCTION	17
4. System Setting.....	18
4.1 DISPLAY APPLICATION ICON	18
4.2 SYSTEM INFORMATION.....	20

4.3 QUICK START 20

4.4 SYSTEM SETTING 22

1. Product Information

1.1 Specifications

Display	
Display Type	12.2" IPS TFT LCD
Resolution	1920 x 1200
Brightness	280nit
Touch screen type	10 points capacitive, G+G, 7H-anti-scratch, 1.1, COF
System	
CPU	Intel Skylake Core m3-6Y30, 4M Cache, 2.20 GHz
GPU	Intel HD Graphics 515
RAM	4 GB LPDDR3
ROM	128 GB
Network	802.11 a/b/g/n/ac (2.4G/5.8G dual band WiFi) Bluetooth 4.2 (BLE) class 1, transmission distance: 10m 3G /4G (Optional)
IO Ports	1 x TF slot, max:128G (SDHC/SDXC) 1 x SIM slot 2 x USB 2.0 1 x USB 3.0 1 x USB Type C 1 x HDMI 1.4a Type C 1 x 3.5mm standard headphone jack 2 x DB9 (1 x RS232, 1 x RS485) 1 x RJ45 1 x DC jack 1 x 12pin POGO pin
Applications	1D/2D Barcode Scanner (Optional) NFC GPS & GLONASS
Operation System	Windows 10 (Optional)
Physical	
Camera	Front: 2.0MP camera; Rear: 5.0MP camera
Speaker	2 x Embedded 8Ω/0.8W waterproof speaker (Built-in)
Mic	Sensitivity: -42db, output resistance 2.2kΩ (Built-in)
Sensor	G-sensor

Adapter	AC100V ~ 240V, 50Hz/60Hz, output DC 12V/4A
Battery	6300mAh/7.4V (Removable), 1000mAh/7.4V (Built-in)
Using time	6hrs (Default 50% volume, default 200nit, play 1080 HD video)
Rugged Feature	IP65, 1.0m drops
Operating Temperature	-10°C ~ 50°C
Storage Temperature	-30°C ~ 70°C
Humidity	95% non-condensing
Dimensions	313mm x 210mm x 23mm
Weight	1500g

1.2 Product Overview



1.3 Interface Description



1. **Power key:** Press it to turn your tablet PC on or off. Pressing with 5 seconds to turn on. Pressing with 10 seconds to turn off. Pressing with short time, for sleep mode or awaken.
2. **Volume +/-:** Reduce / increase the volume.
3. **P1/P2:** Development for customer customized.
4. **Nut:** For the belt and strap.



5. **Power light:** The indicator will light when system is started after press power button.
6. **Charging light:** The indicator will light when the device connects to adapter for charging.
7. **Network light 3G/4G:** The indicator will often light after network 3G/4G is recognized.

8. **Front Camera:** 2.0MP front Camera, to take photos and record video.
9. **Light sensor:** The light sensation can adjust the brightness automatically.
10. **TP:** 10 points capacitive panel, G+G, Rigidity: above 7H-Anti-scratch, TP thickness: 1.1mm, COF, support to handwritten, optional for SLR AR film.
11. **LCD:** 12.2inch, Resolution: 1920 X 1200.

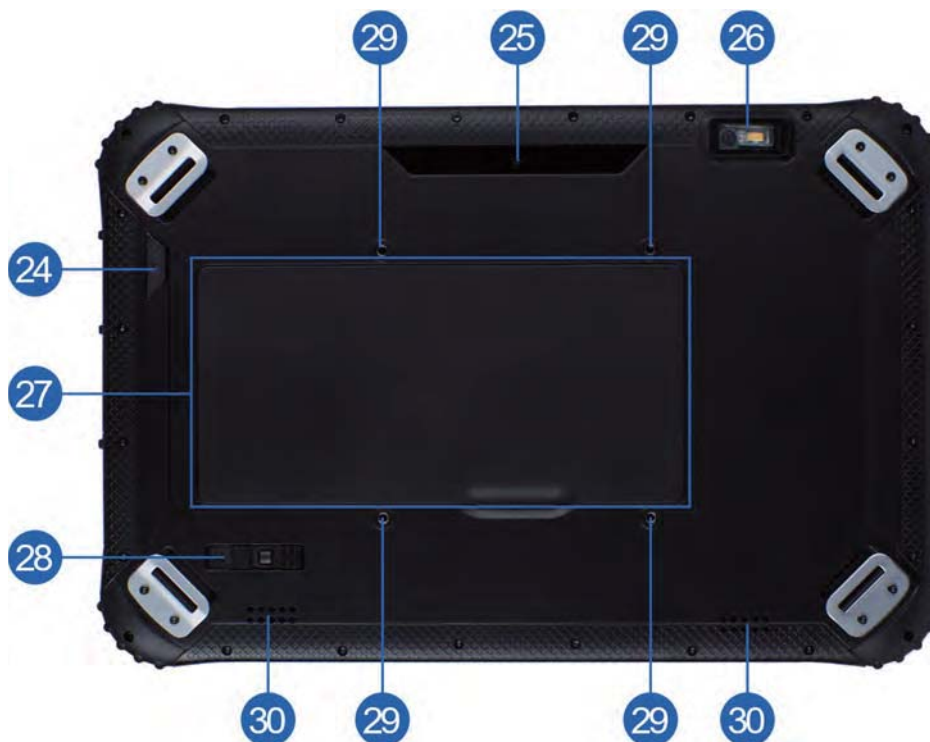


12. **Lock keyboard screw:** Attach the keyboard lock to the tablet body by provided screws when installing the keyboard.
13. **Keyboard locating hole:** Device connect base or keyboard by those two holes. They can prevent poor contact because of shaking.
14. **POGO pin:** This interface matched with location hole, convenient aim and firm link rugged tablet and key or docking.



15. **Earphone jack:** 3.5mm standard earphone audio output Interface.
16. **USB Type C:** Interface for Data transferring. Possible for using the pallet to transfer it into standard USB interface.

17. **HDMI:** Connect to the monitor/ high definition TV and other display device, to transfer or play the audio/video, to transfer and play the pictures.
18. **USB3.0:** High speed data transmission interface.
19. **USB2.0:** Standard data transmission interface.
20. **Ethernet port:** RJ45 net export, user can link internet to using in this slot.
21. **DC jack:** By DC interface charge for your rugged tablet.
22. **RS232:** Standard protocol of RS232, interface can be used to develop and connect other devices.
23. **RS485:** Standard protocol of RS485, interface can be used to develop and connect other devices.



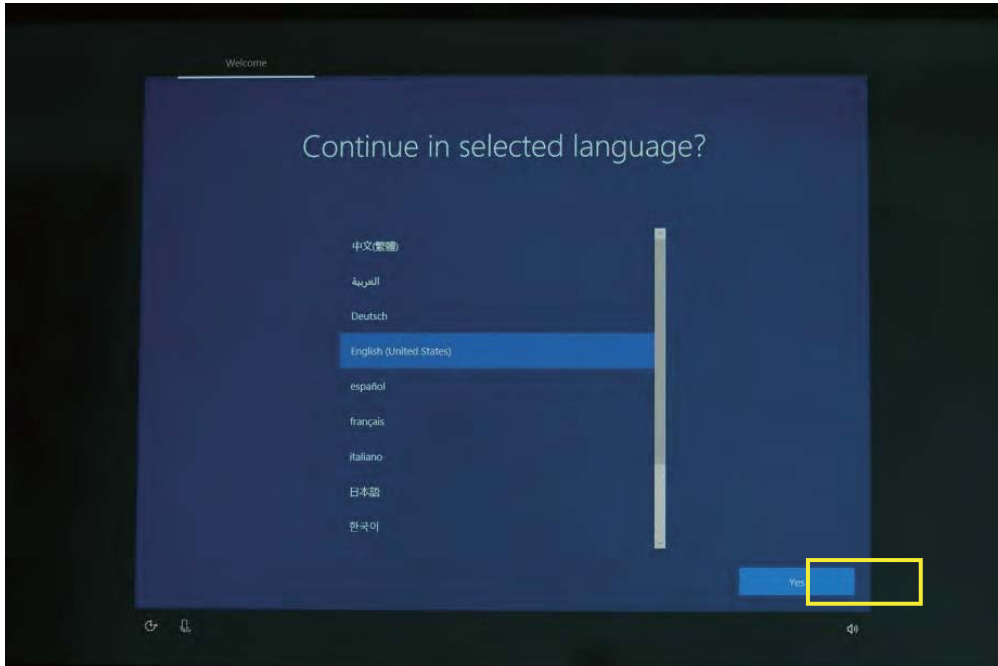
24. **F key:** Barcode scan.
25. **Rear camera:** Rear 5.0MP, to take photos and videos.
26. **1D/2DScanner:** Support one-dimensional / two-dimensional.
27. **Battery:** MAS1227 equipped with 6300mAh/7.4V (Removable) and 1000mAh/7.4V (Built-in)

28. **Battery Lock:** Using sliding bar for unlock; Let the battery lock in the locking state when be used, which can prevent the battery from falling off.
29. **VESA holes:** VESA holes can be fixed directly to the vehicle or other facilities by screws.
30. **Speaker:** Built-in loudspeaker that you don't have to link extra equipment can hear voice.

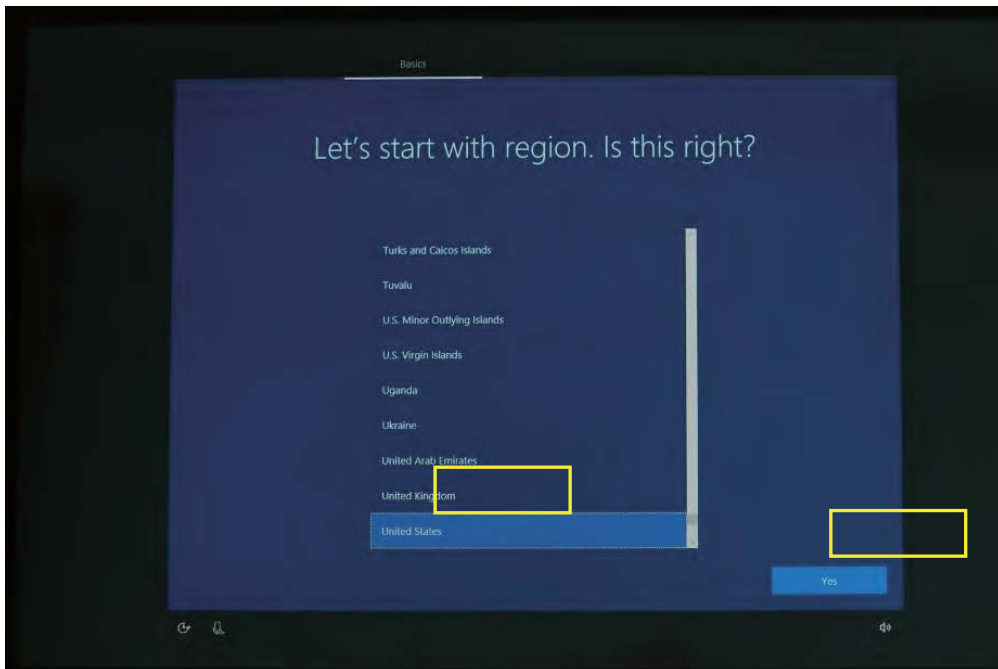
2. Device Initialized Setting

2.1 Language Setting

- A. Click "Yes" to go to the next step depending on the language you want.

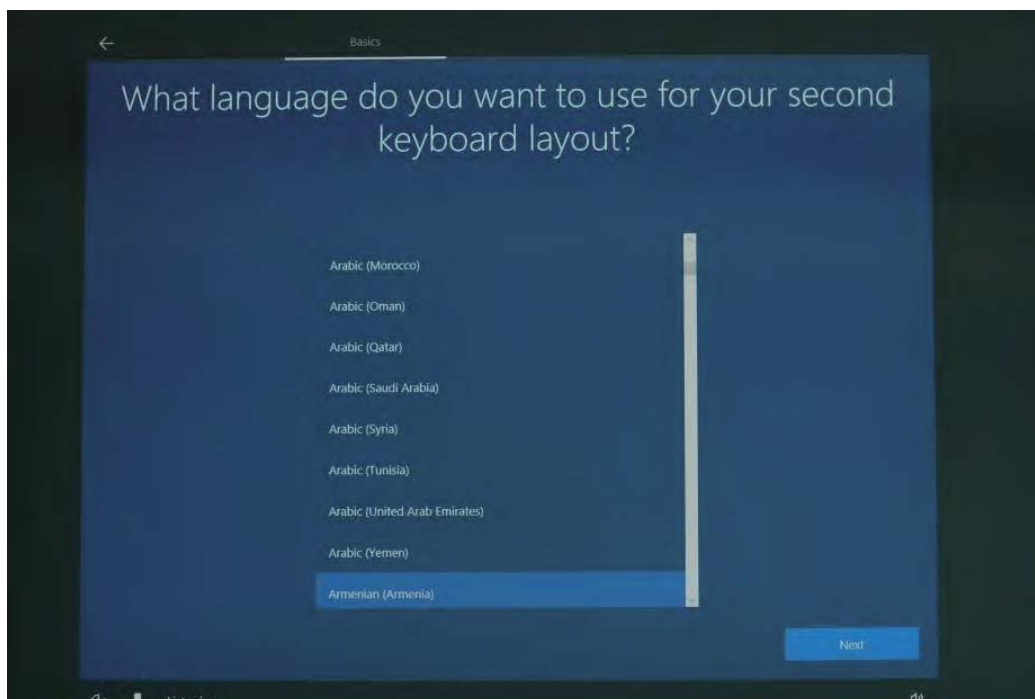
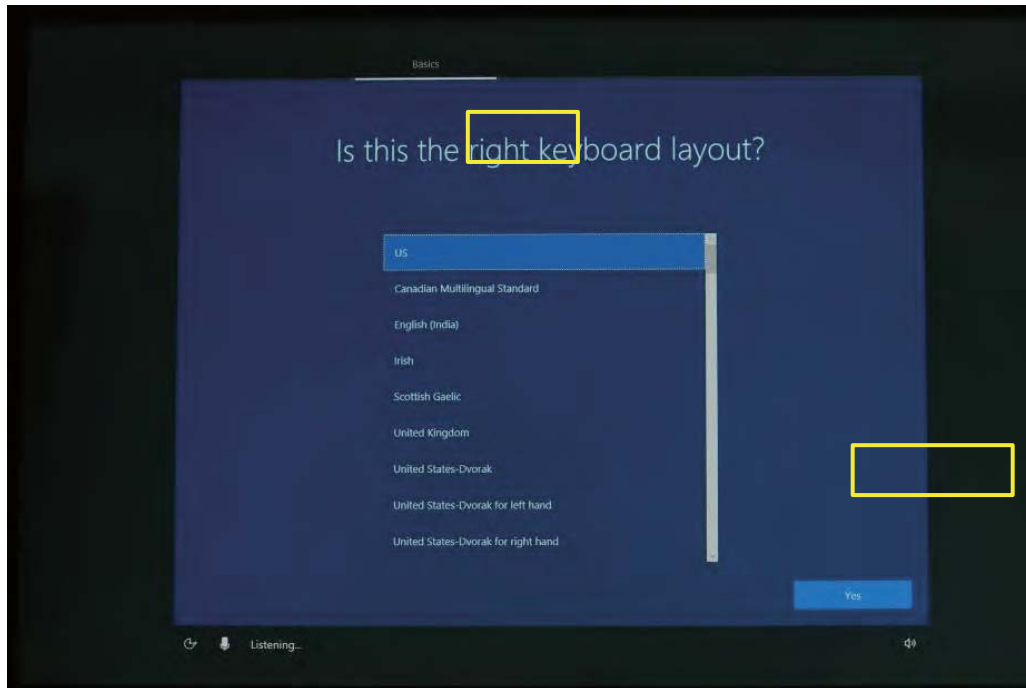


- B. Select the area of use according to language.

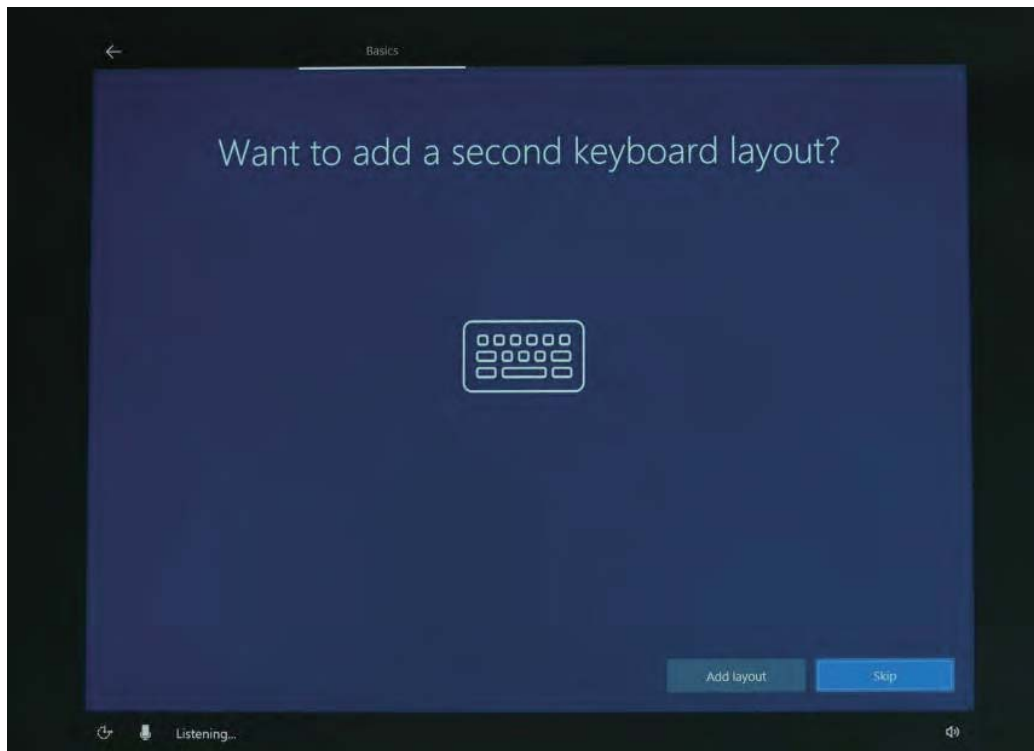


2.2 Keyboard Layout and Language Setting

- A. Choose the xkeyboard layout and language you like, click "Yes" to enter the next step.

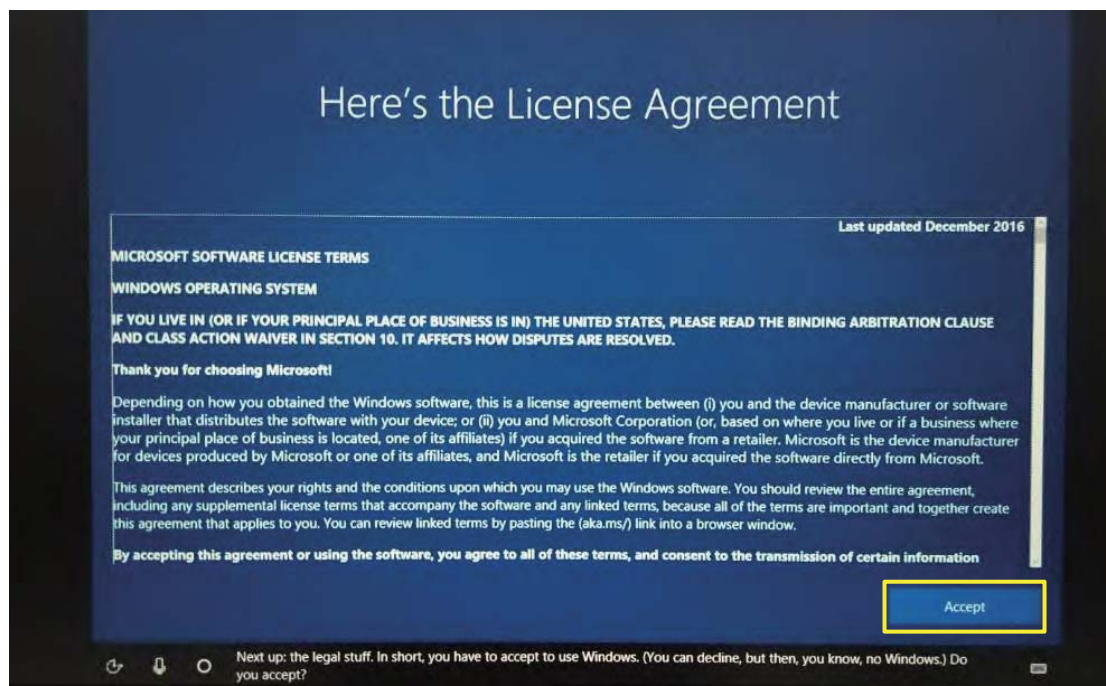


B. If one keyboard cannot be satisfied, add a second keyboard or skip here.



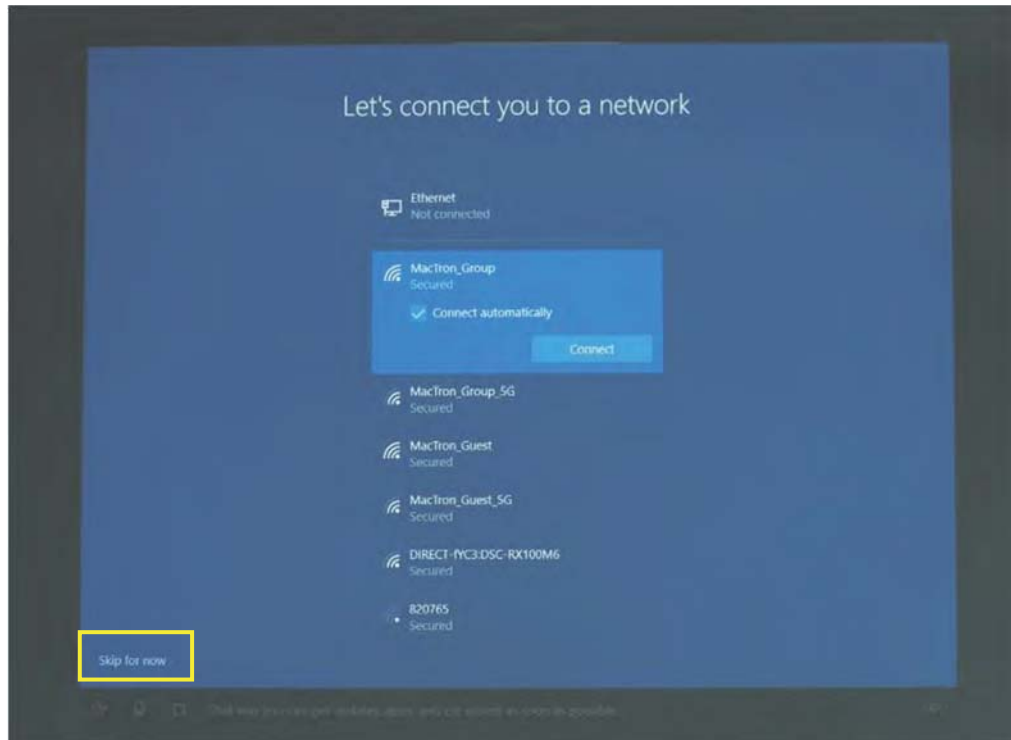
2.3 User License Agreement

This is the Microsoft software license agreement, click "Accept" to enter the next step.



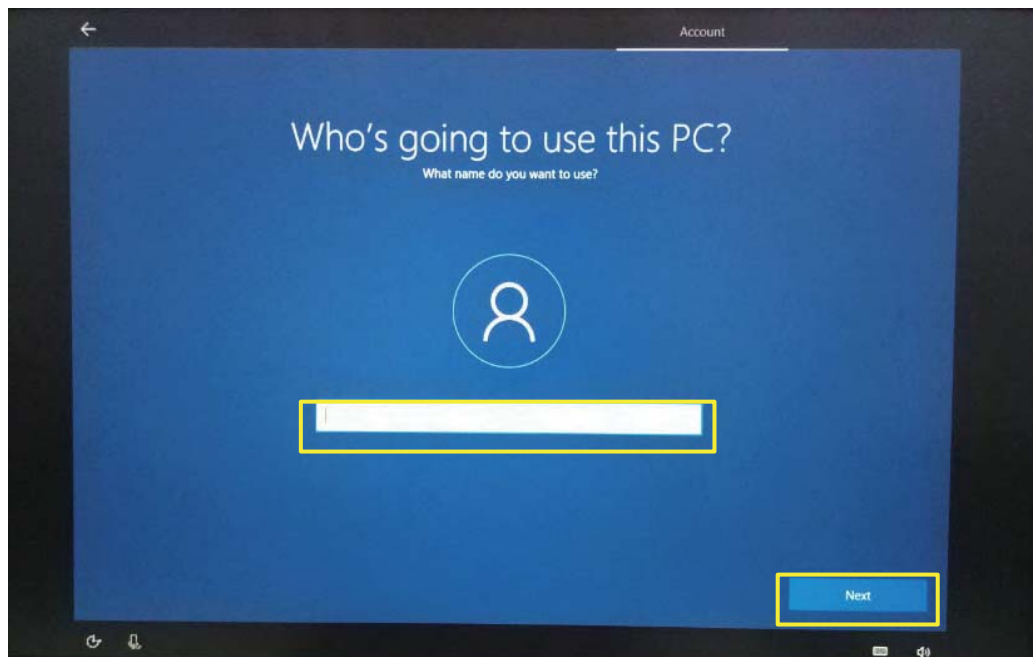
2.4 Network Setting

Choose the network you want to connect and enter your password. (it is recommended to skip the network connection, otherwise it may take too long for the system to check for updates.)



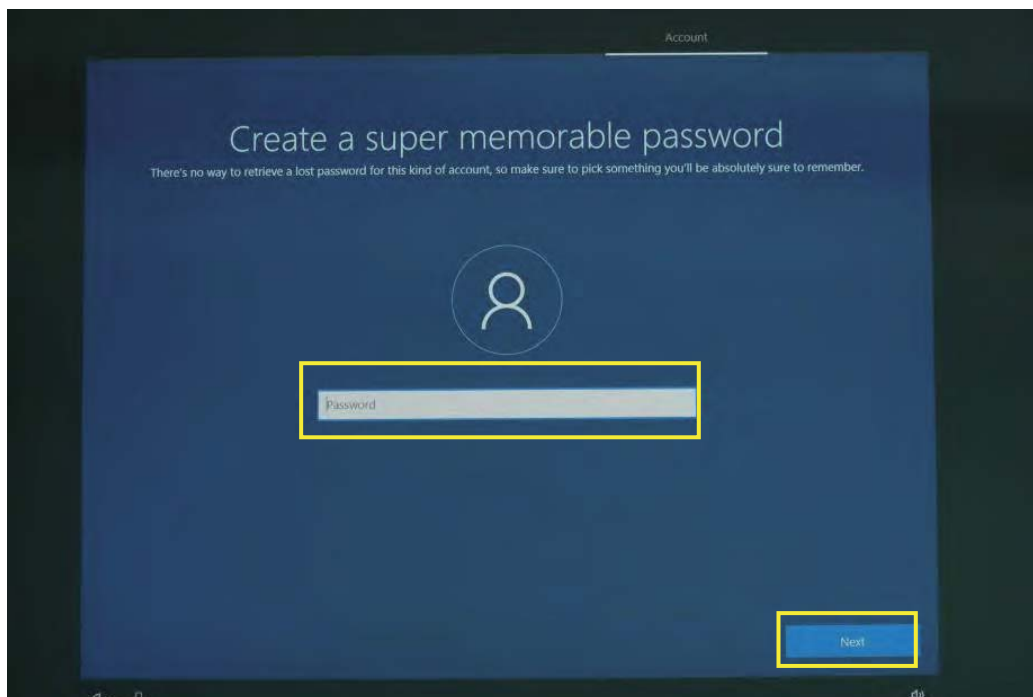
2.5 Username and password settings

- A. Setting the user name, go to the next step.



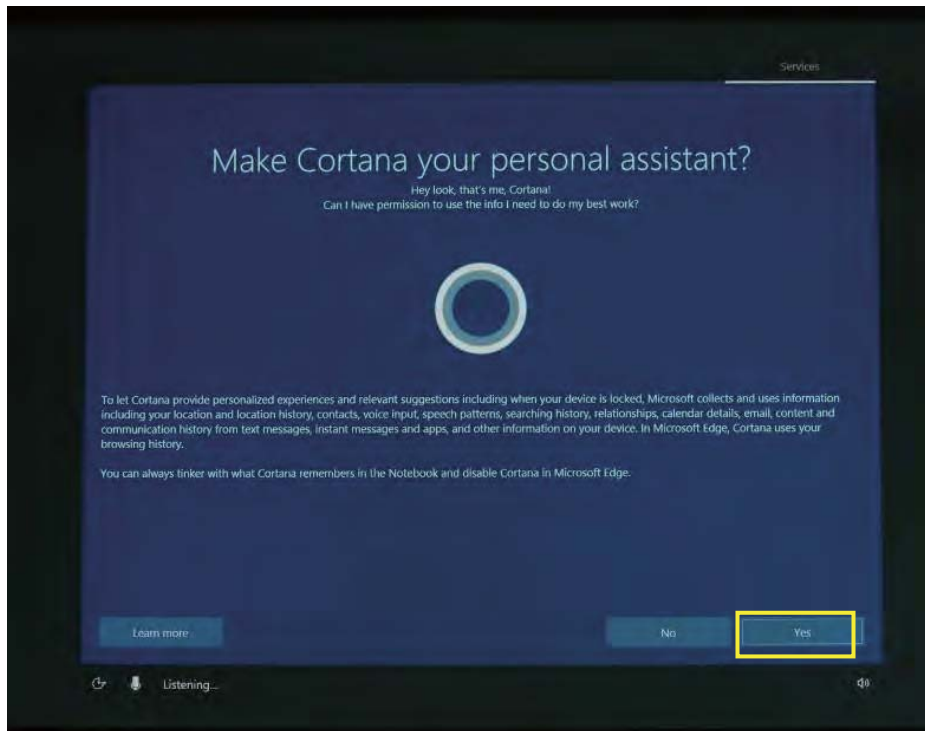
- B. Setting password

Enter the password, click "Next" the device will restart, do not do anything else during the device restart. (no need to set password and click the "Next").

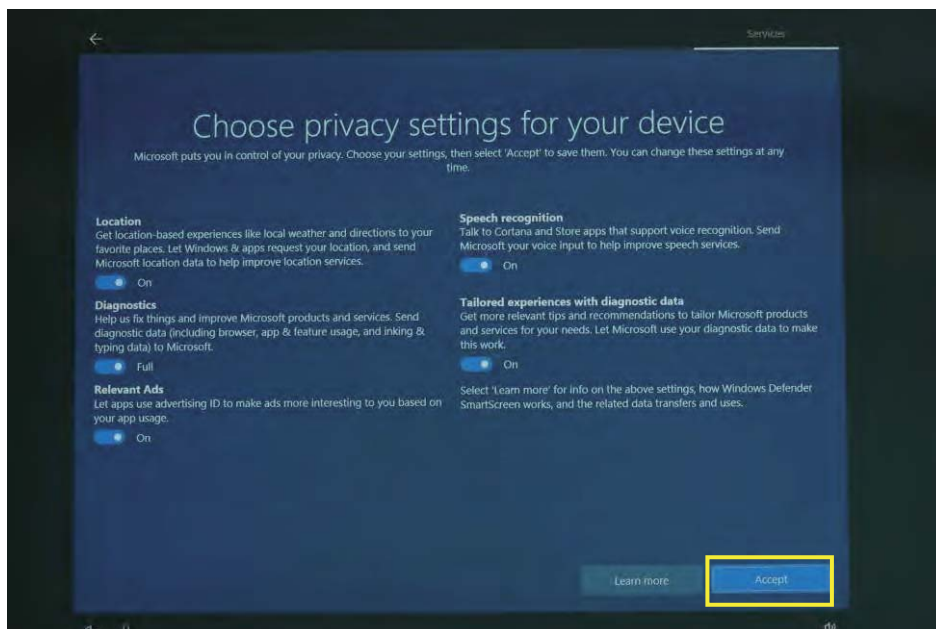


2.6 Personalized setting

A. Make Cortana your personal assistant.

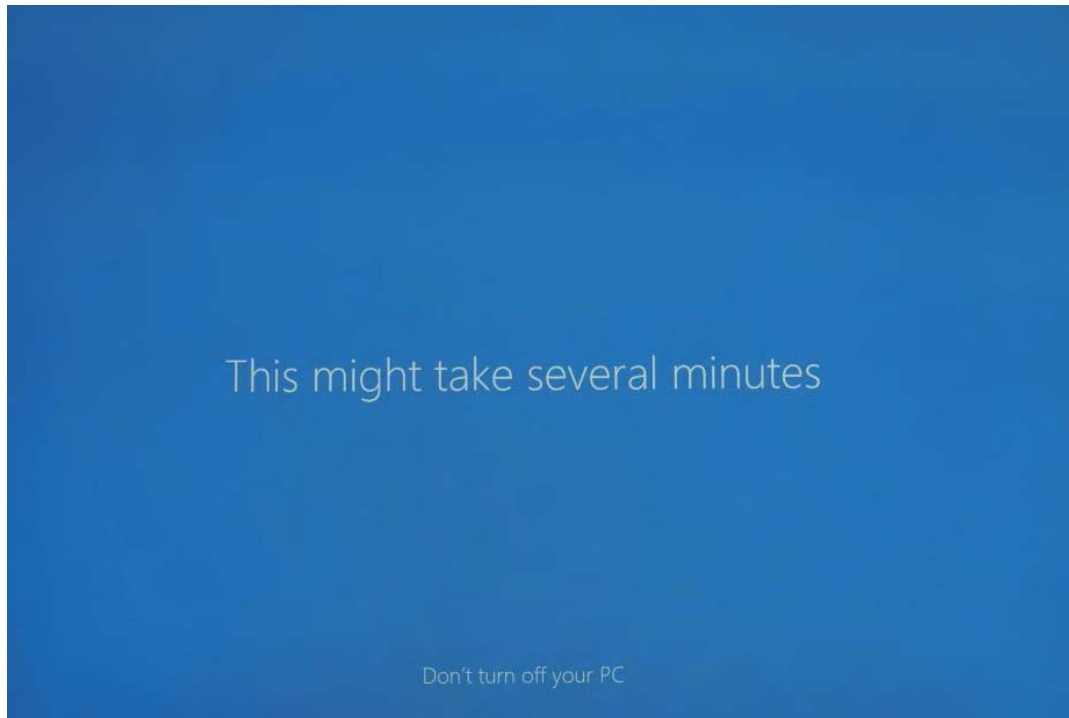


B. Choose privacy settings for your device.



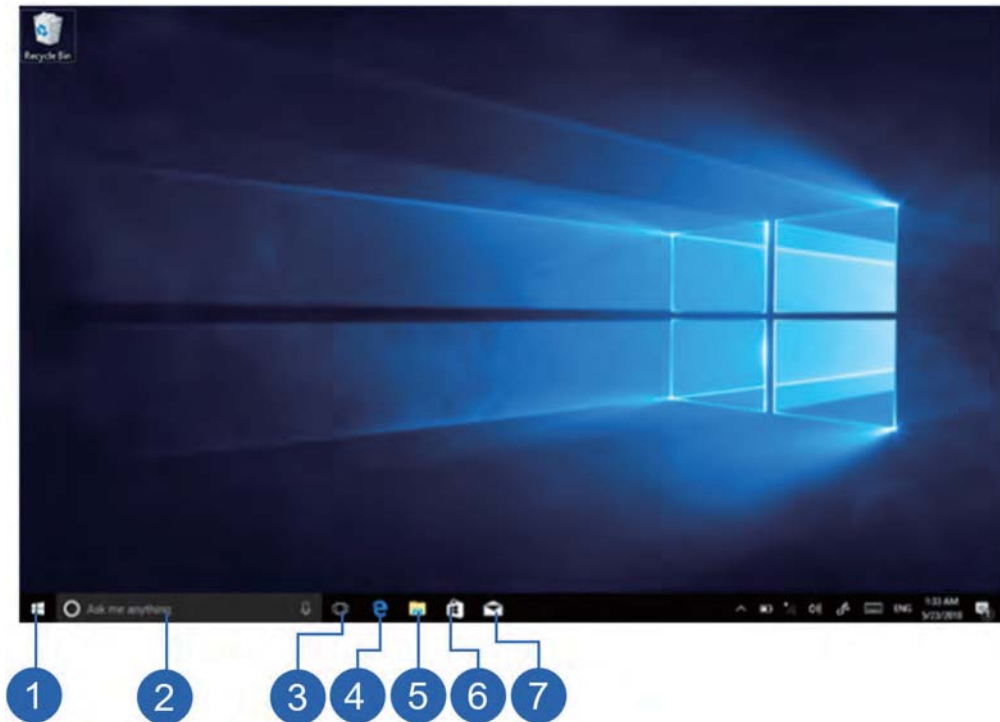
2.7 Complete setting

Wait for the system to enter the desktop, do not shut down the computer.



3. Desktop Layout

3.1 Windows 10 Startup Desktop



1. Start icon - Quick launch of installed applications.
2. Search for - Enter the key character search page or open the application.
3. Task view - Open multiple tasks to quickly switch applications with this icon.
4. IE browser.
5. File explore - For quick viewing of recently used files and administration files.
6. Store - Download installation application.
7. Email - Log in to email account to receive and send mail.

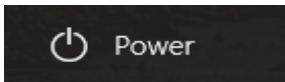
3.2 Charm menu bar

Press the Start button to open the charm menu bar. Including: Start, Device, Settings, Search program.

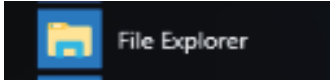


1. Battery level - View the system of battery voltage.
2. Network - View the status of device management network connections.
3. Sound - Control audio and adjust volume.
4. Pen - Pen and Windows ink settings.
5. Keyboard - Touch keyboard button.
6. Language - Set up and manage the current input method.
7. Time/date - Time and date setting.
8. Action center - View system notification information.

Including: Browse files, settings, power keys, apps



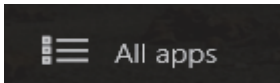
Sleep, shut down, restart



Search for files and applications

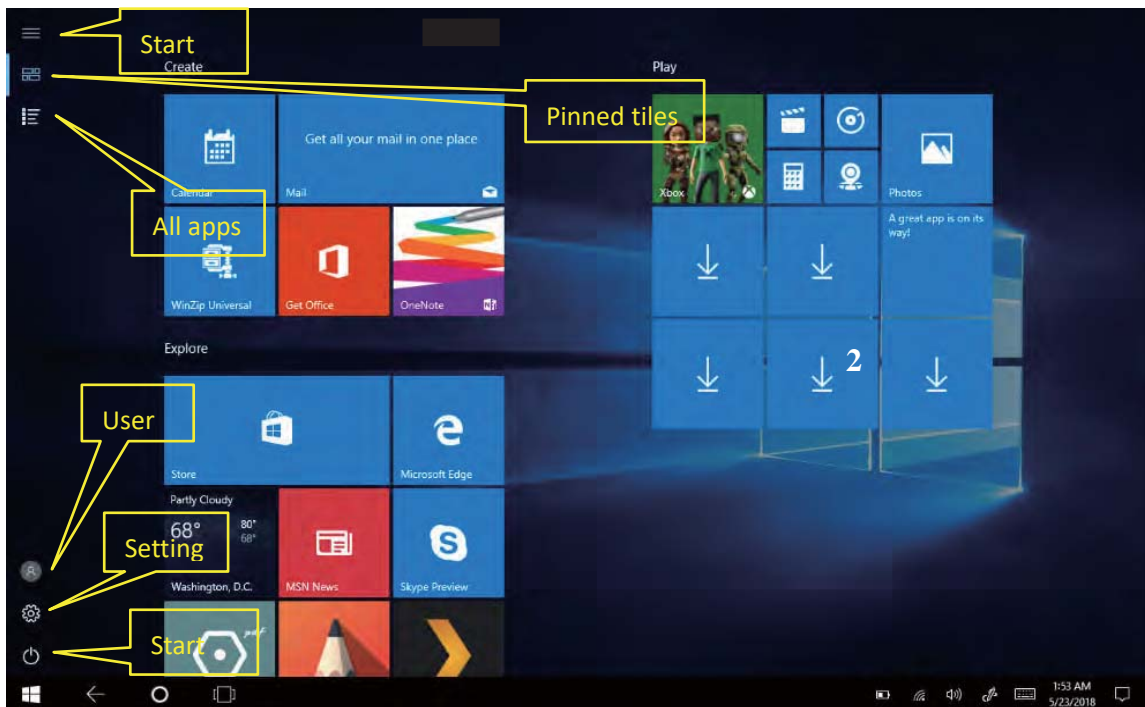
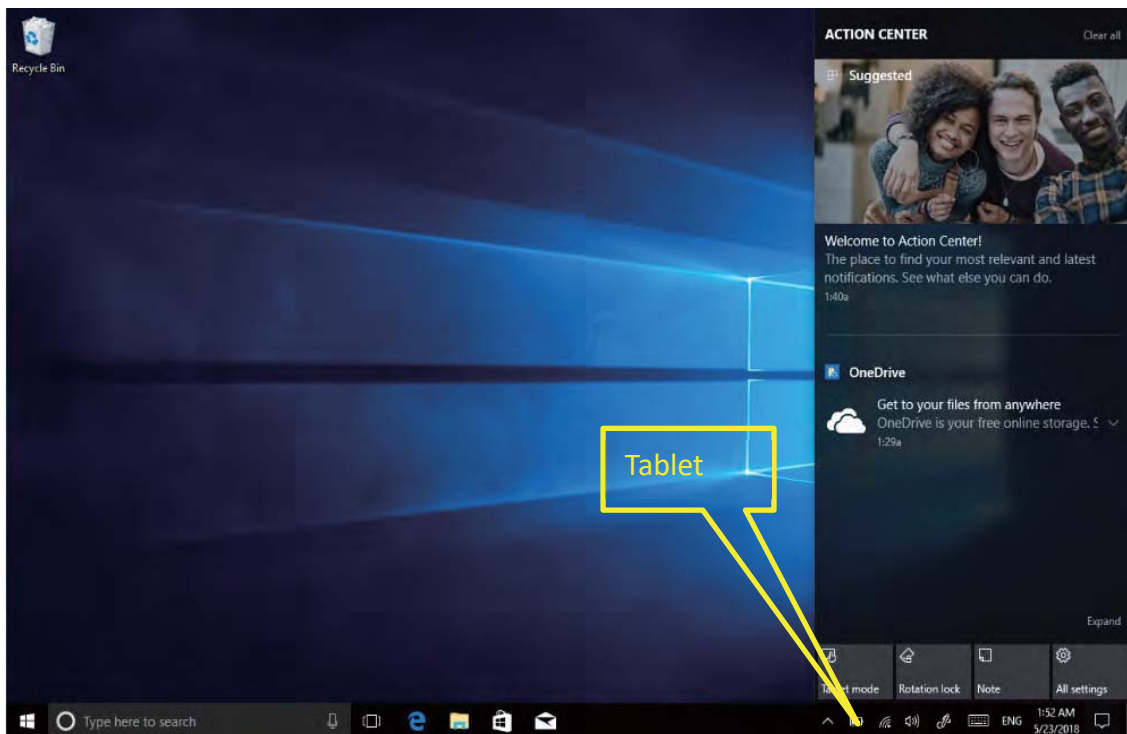


Device system



More apps

3.3 APP Interface Introduction



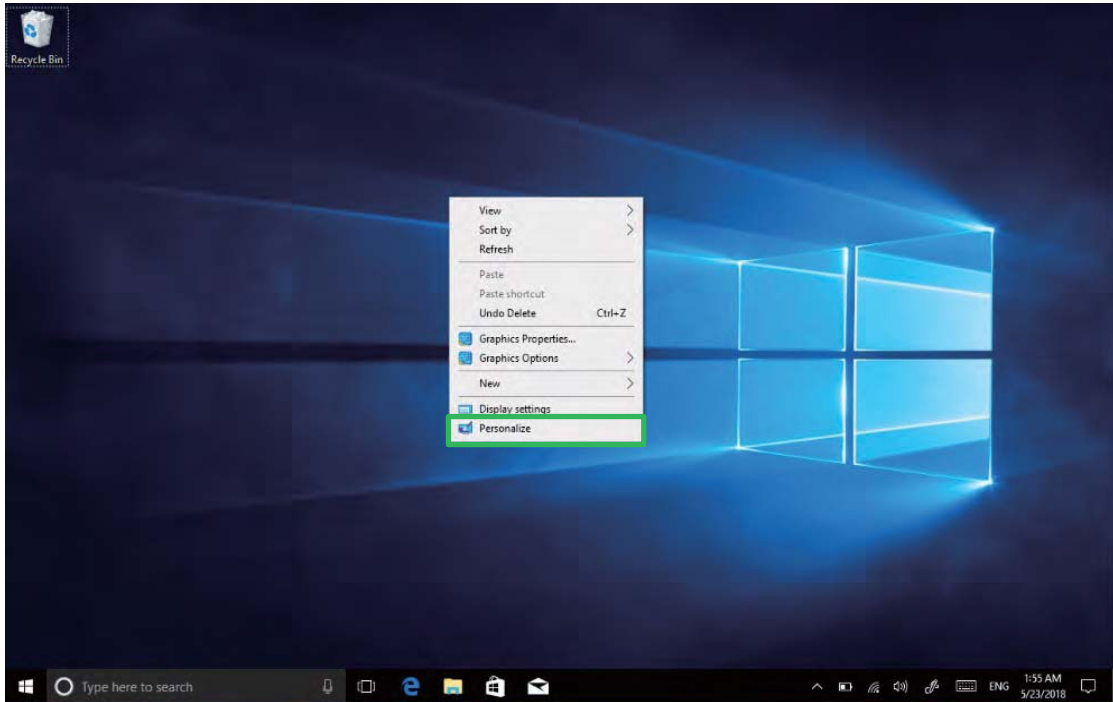
Add "Magnet" file: All app-----select the application icon, mouse with right key ----- pin to start ----return to the fixed magnet to view the application.

Delete magnet file: Fixed magnet, mouse with right key----- select cancel screen.

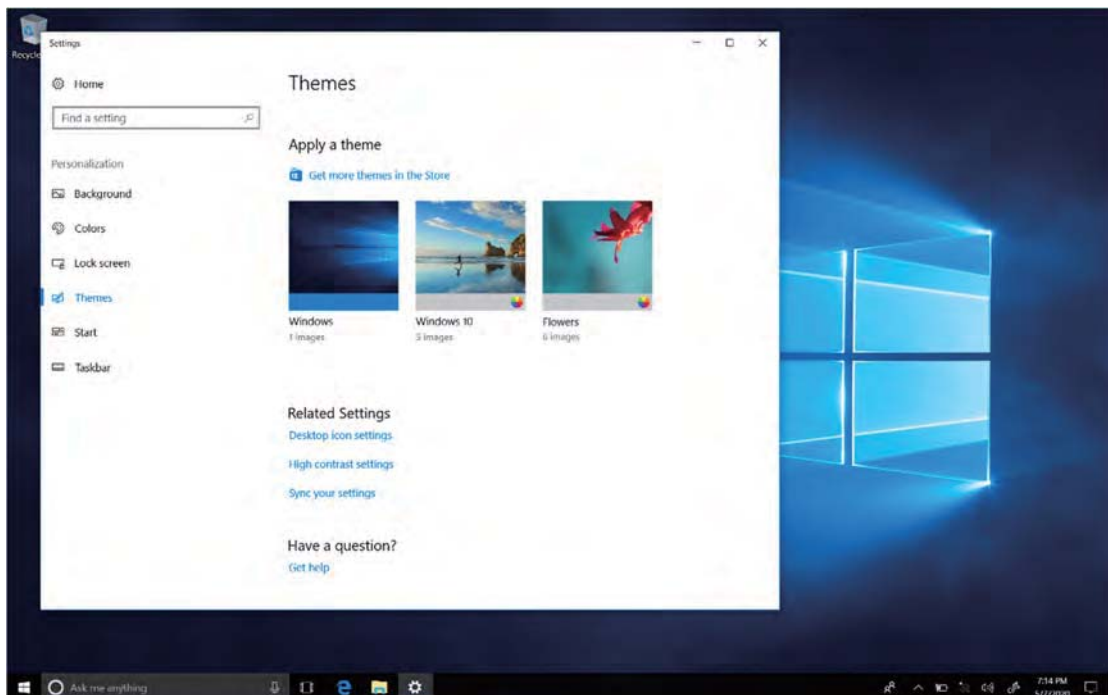
4. System Setting

4.1 Display Application icon

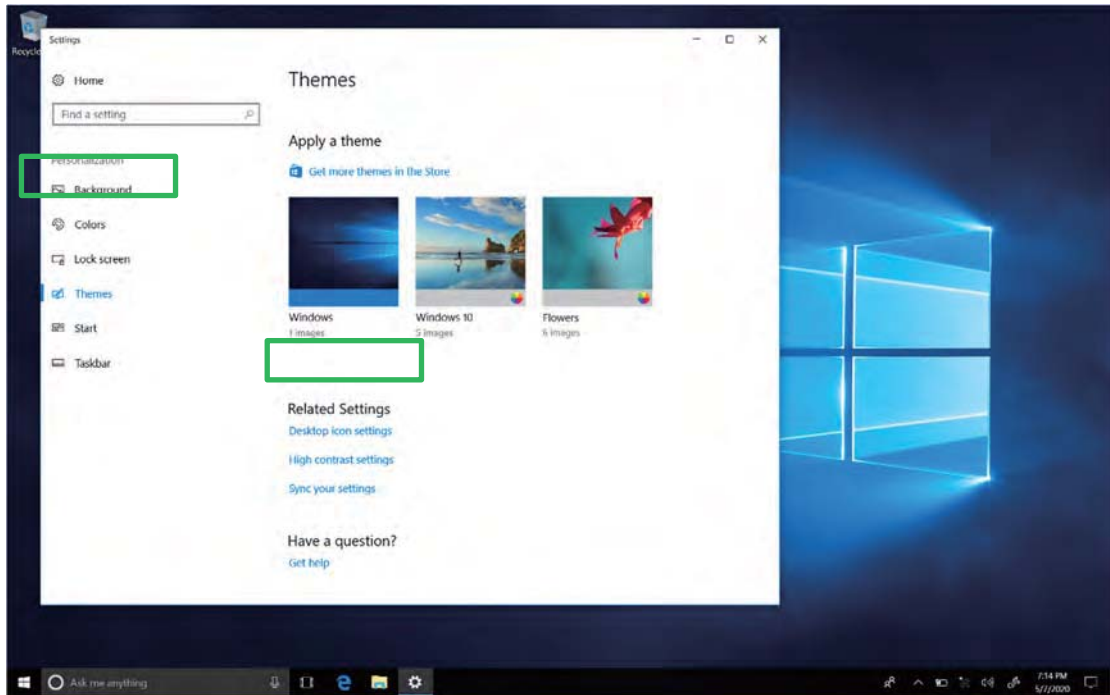
- A. Click on the right mouse key and select “Personalize”, as below picture.



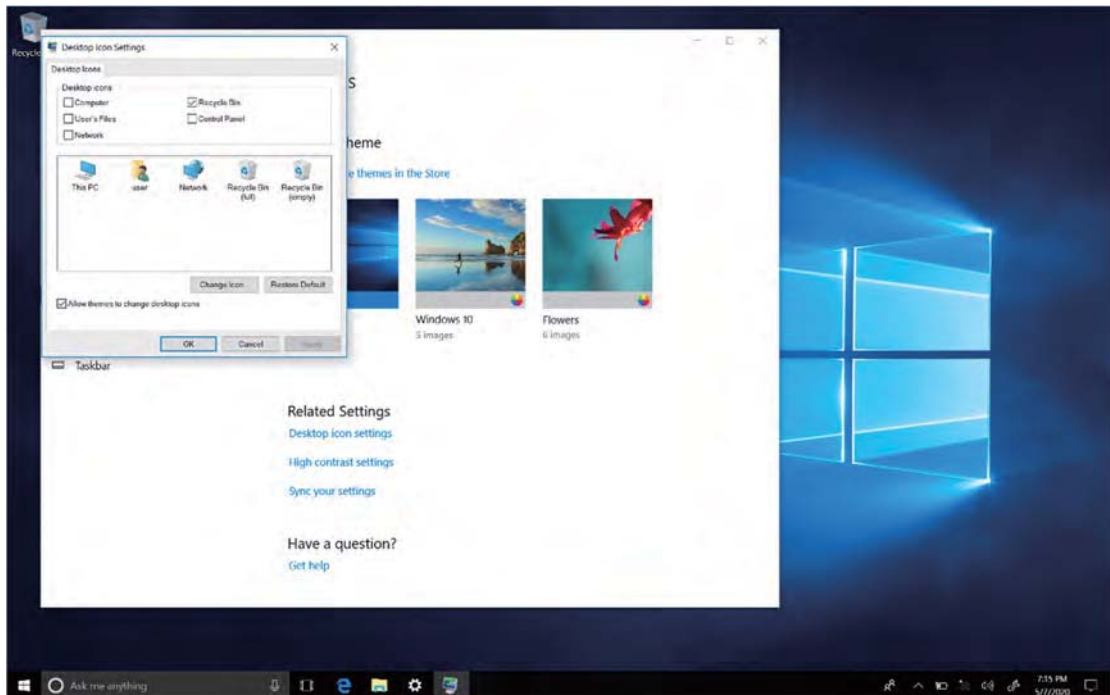
- B. Personalize window, click “Themes” with the mouse left key.



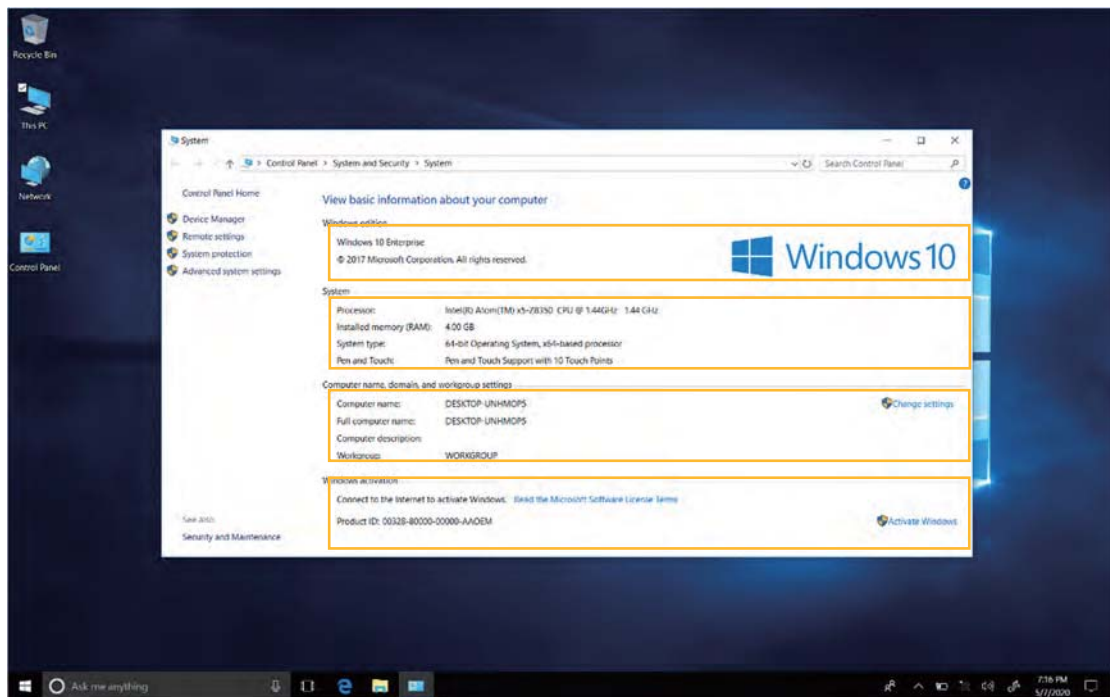
C. Click “Desktop icon settings” with the mouse left key.



D. Tick in front of the computer icon and click “OK”.



4.2 System Information



Click the right mouse key or long touch the computer icon to open the extension option. Click on “Properties” to view system information, Windows system version, hardware configuration information, computer name, Windows activation, etc.

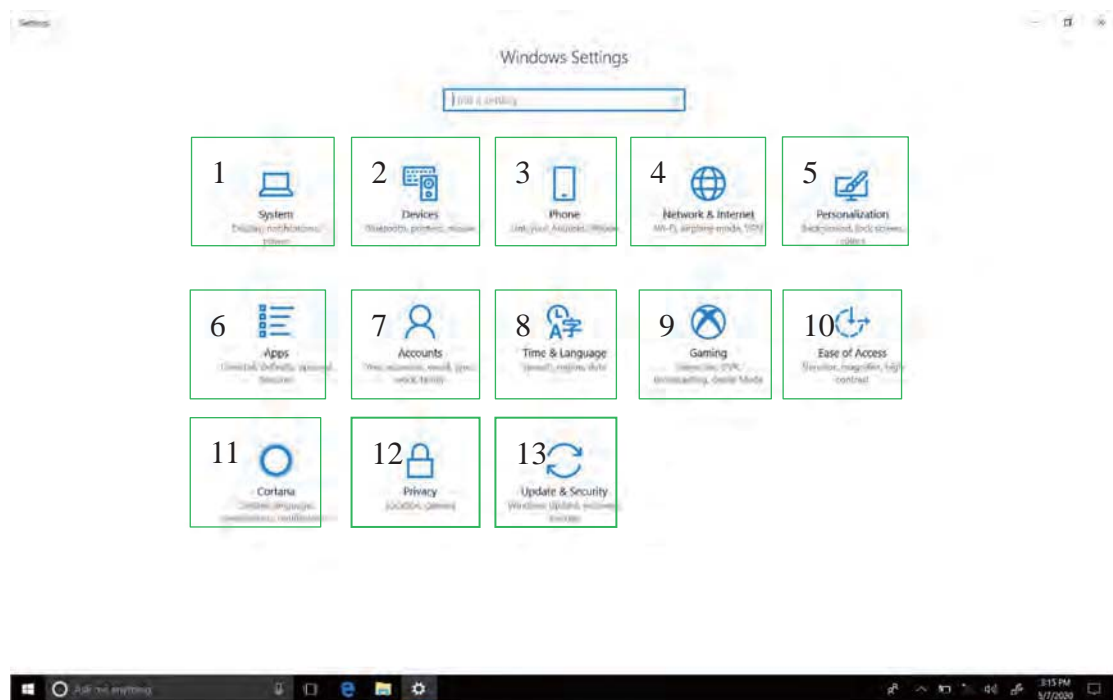
4.3 Quick start



Click the right mouse button or click the long touch to start the icon, open the advanced boot interface, and open the corresponding function:

1. Apps and features - Manage installed applications and drivers, update drivers and applications.
2. Mobility center - Adjust the screen brightness, volume size, detect battery power, set the direction of the screen.
3. Power Options - Management about the power settings, on the battery power turn off screen after how long times, PC go to sleep after how long times.
4. Event Viewer - View Windows logs, custom views, subscriptions, application and service logs.
5. System - View system and hardware configuration information.
6. Device Manager - Manage device drivers, disable and enable devices, unknown device driver installation management.
7. Network connection - Quickly start the network setup. On this page, you can set up the mobile phone network, Wi-Fi and Ethernet.
8. Disk management - Local and external disk management, partitioned disk format.
9. Computer management - Opening computer system tools, storage, services, etc.
10. Windows Power Shell - CMD command runs the window.
11. Windows Power Shell (Admin) - CMD administrator: commands to run windows.
12. Task manager - Force the system to turn off the background programs and services, and check the running state of the computer.
13. Setting - Open the system settings.
14. File explore - Open and check file.
15. Search - Search for a web site or application.
16. Run - CMD running window.
17. Shut down or sign out - Turn off the computer, sleep in, restart and sign off the user.
18. Desktop - Back to desktop.

4.4 System setting



1. System----- Display settings, notifications & actions, power & sleep, battery, storage, tablet mode, multitasking, projecting to this PC, shared experiences, about remote desktop (Windows10 HOME version is not supported).
2. Device ----- Bluetooth & other devices, printer & scanner, mouse, typing, pen & Windows ink, auto play, USB.
3. Phone----Link your Android, iPhone.
4. Network and Internet----- View network status, Wi-Fi settings, cellular settings, ethernet, dial-up, VPN settings, airplane mode, mobile hotspot, data usage, proxy settings.
5. Personalization ----- Background setting, colors, lock screen, theme setting. (start menu bar settings, taskbar) these two items need to be set up after system activate.
6. Apps -----Apps and features (can be applied to install, modify or uninstall), default apps (can add default startup applications), offline maps, Apps for websites.
7. Account-----View your info, add e-mail and apps accounts, sign-in options, access work or School, family & other people, sync your settings.

8. Time and Language----- The time and date can be set at the interface (when the device is connected to the Internet when it opens automatically, it can synchronize with the network), Region & language (Region setting, adding other language packages), speech settings.
9. Gaming-----Control how game bar opens and recognizes you game. record game clips, screenshots, and broadcast using game bar. game bar, game DVR, broadcasting, game mode.
10. Easy of access ----- Can be settings, narrator, magnifier, high contrast, closed captions, keyboard, mouse, other options.
11. Cortana---- Cortana language, permissions, notifications.
12. Privacy ----- Privacy can be settings, including general, location, camera, microphone, Notifications, speech, inking & typing, account info, contacts, calendar, call history, app diagnostics.
13. Update & security----- Windows update, windows defender, backup systems, troubleshooting, recovery systems, activation, find my devices, for developer, Windows insider program.

This device complies with part 15 of the FCC rules. Operation is subject to the following two conditions: (1) This device may not cause harmful interference, and (2) this device must accept any interference received, including interference that may cause undesired operation.

15.21 Information to the user.

Any changes or modifications not expressly approved by the party responsible for compliance could void the user's authority to operate the equipment. 15.105 Information for the user.

Note: This equipment has been tested and found to comply with the limits for a Class B digital device, pursuant to part 15 of the FCC rules. These limits are designed to provide reasonable protection against harmful interference in a residential installation. This equipment generates, uses and can radiate radio frequency energy and, if not installed and used in accordance with the instructions, may cause interference to radio communications. However, there is no guarantee that interference will not occur in a particular installation. If this equipment does cause harmful interference to radio or television reception, which can be determined by turning the equipment off and on, the user is encouraged to try to correct the interference by one or more of the following measures:

- Reorient or relocate the receiving antenna.
- Increase the separation between the equipment and receiver.
- Connecting the equipment to a socket on a circuit different from that to which the receiver is connected.
- Contact with the provider or a radio f TV technician for help.

Specific absorption rate (SAR):

This Tablet PC meets the government's requirements for exposure to radio waves. The guidelines are based on standards developed by independent scientific organizations through periodic and thorough evaluation of scientific studies. The standards include a margin of safety designed to ensure the safety of all people regardless of their age or health.

The FCC Statement of Exposure to RF and the SAR limit for the United States (FCC) is 1.6 W/kg average for each gram of tissue. This device was tested for typical operations of use on the body, with the back of the Tablet PC at 0mm from the body. To maintain compliance with FCC RF exposure requirements, use accessories that maintain a distance of 0mm between the user's body and the back of the Tablet PC. The use of belt clips, covers and similar accessories must not contain metallic components in their assembly. The use of accessories that do not meet these requirements may not meet FCC RF exposure requirements and should be avoided.

Functioning in the body

This device was tested for typical operations of use in the body. To comply with RF exposure requirements, a minimum separation distance of 0mm must be maintained between the user's body and the telephone, including the antenna. Third-party accessories such as belt clips, covers and similar accessories used with this device should not contain metallic components, accessories that do not meet these RF exposure requirements and should be avoided from use on the body. Use only the supplied antenna or an approved antenna.