

Automatic pet feeder with WIFI

Manual

Please read carefully before using the product



APP

Function introduction

Revolving lamp

Blue light	Flash: Flash twice a second, add WiFi quickly	red light	Usually it's not bright
	Slow flash: flash once in 3 seconds, hot spot connection		Limit switch detection abnormal flashing red light
	It's always on: Network connection successful		Flash twice when unlocking / locking
	Mode switching: Long on for 6 seconds		Mode switching: Long on for 6 seconds

Key operation

Microphone button: press and hold the "drop" sound to start recording, release the "two drops" prompt to stop recording. The maximum recording time is 10 seconds.
RESETKey: When the connection mode is switched / reset, press and hold for 7 seconds to make 3 sounds of "drop, drop, drop", and the red / blue indicator light is on for 6 seconds to switch to slow flashing (hot spot connection mode). After the machine is configured successfully, press and hold it again to send out "drop, drop, drop" sound, and the red / blue indicator light will stay on for 6 seconds, and the equipment will return to the factory settings.
FEEDKey: Short press to send out 1 portion of food. Press and hold for 10 seconds and the red indicator will flash twice, and the machine will be locked. Press and hold the red indicator light for 10 seconds again to unlock. In the locked state, press and hold the reset key to restore the factory settings. Do not press record and FEEDKey.

5V DC power socket

For external DC 5 V power adapter.

How to dismantle grain storage barrel

The two sides of the grain storage barrel are provided with locking buckles. Press and hold the locking buckle to lift up the barrel.

horn

The speaker at the bottom is the speaker that plays the food call recording

How to open and close the lid of grain barrel

The cover of grain barrel adopts self suction design, and the cover can be put down and pressed tightly.

Bottom battery box

Three No. 1 batteries can be placed as standby power supply. (When the battery is powered, the feeder only retains the automatic feeding function set by app, and other functions cannot be used.)

Battery description

1. Use three No. 1 alkaline batteries for power supply. 2. The positive and negative electrodes of the battery refer to the positive and negative signs in the battery compartment. 3. When the battery is low, the feeder should be powered off before replacing with a new battery. 4. The battery must be removed from the feeder before the feeder is discarded. 5. When removing the battery, the feeder must be powered off. 6. According to the relevant national regulations, please place the waste batteries in the special storage point. 7. If the battery is not used for a long time, please take out the battery. In case of leakage, please clean the battery compartment immediately and put the leaking battery in a special storage point.

How to install food tray

There are two connecting holes on the inside of the food plate. Insert the connecting column at the bottom of the body into the connecting holes.

Recording settings

After the feeder is configured, a recording can be added to the feeder. This recording will be played every time you press the feeding key manually or automatically to remind the pet that the feeding time is up.

The specific operation is as follows:

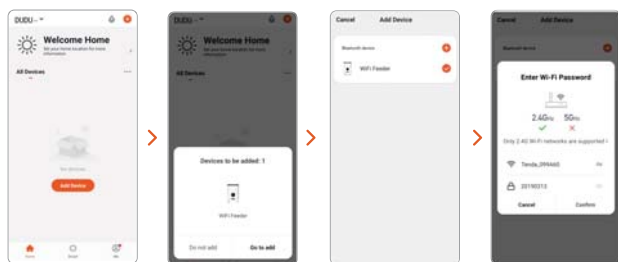
Press and hold the microphone button and start recording. After recording, release the button to send out two "didi" prompts to complete the recording. The recording time is up to 10 seconds. If you are not satisfied, you can repeat this operation to cover the previous recording.

AP mode configuration (optional)

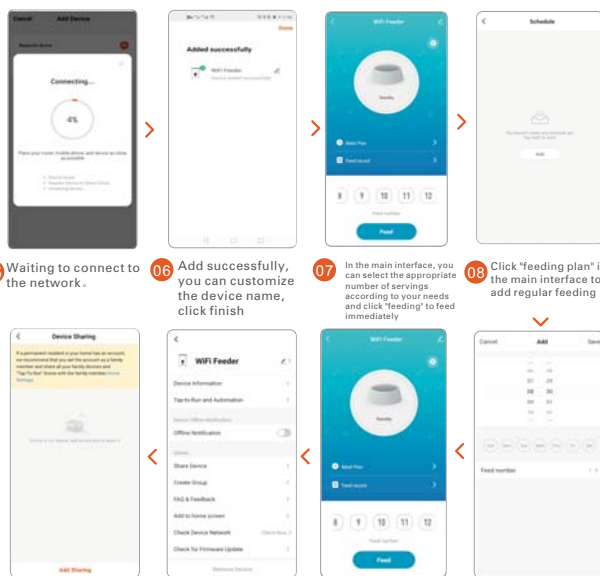
Please configure according to the diagram in the manual. If the configuration is not successful, please switch to AP mode for configuration. The specific operation process is as follows: 1. In the mode of waiting for connection, the status indicator is flashing rapidly. Press and hold the "reset" key for 7 seconds to give out three sounds of "drop, drop, drop". After letting go, the indicator light will switch to slow flashing, and then enter AP mode. 2. Open the mobile app, select Add Device - Manual add - small household appliances - pet feeder, select other methods - hot distribution network in the upper right corner of the interface, fill in the WiFi password according to the prompt, and then enter the WiFi interface of the mobile phone to connect to a WiFi signal of smartlife XXX. 3. After selecting and connecting the hotspot signal, return to app and wait for the connection to complete.

WiFi intelligent pet feeder

Smart app Specific operation



- Download the app and sign in with your exclusive account
- After entering the interface, wait for the device to be discovered automatically and click "add"
- Select Add Device "+"
- Input WiFi password (user name cannot use Chinese, password can not take special symbol)



- Waiting to connect to the network.
- Add successfully, you can customize the device name, click finish
- In the main interface, you can select the appropriate number of servings according to your needs and click "feeding" to feed immediately
- Click "feeding plan" in the main interface to add regular feeding
- Click "add share" and enter the app account of the other party to share the device with multiple people
- Enter the settings menu and click "shared device"
- Sharing device steps: in the main interface, click the icon in the upper right corner to enter the setting options
- You can set the time and the number of servings according to your pet's eating pattern. You can choose from Monday to Sunday every day and click save

Simple troubleshooting of pet feeder

01 Please check if you can't connect: The WiFi name and password should not be in Chinese or more than 12 digits. Please use combination of numbers and letters. 5g WiFi signal is not supported. Please use 2.4G WiFi signal. b: Some community broadband, radio and television broadband, multi-level network or mobile Tietong network, due to network restrictions, the feeder can not connect to the network server, so it is recommended to use Telecom or Unicom Network. c: Some software conflicts in the phone will also cause connection failure. Please restart the phone. Turn off the non mobile system software that starts with the phone, turn on Bluetooth and location, and then try reconnecting to the feeder.

02 If the feeding device is inaccurate or not feeding, please check whether there is too much food in the food plate and whether the food passage is blocked. Please clean the food outlet and passage.

03 The device shows offline. Please check the distance between the device and the router at home. Do not exceed 10 meters. Try not to partition the middle. According to WiFi characteristics, the WiFi signal on the partition wall will drop sharply, resulting in unstable connection offline.

04 If there is no response after starting the machine, check whether the power supply is plugged in and whether the power switch is turned on. If they are all plugged in, please check whether the power supply is damaged, contact customer service to buy the power supply or return to the factory for maintenance according to the judgment.

Packing list

After opening the product package, please confirm whether the pet feeder is in good condition. Please check whether the accessories are complete according to the list. Machine x1, power adapter x1, Connecting wire x1, quick operation guide x1

Warning:

This device complies with Part 15 of the FCC Rules. Operation is subject to the following two conditions: (1) this device may not cause harmful interference, and (2) this device must accept any interference received, including interference that may cause undesired operation.

changes or modifications not expressly approved by the party responsible for compliance could void the user's authority to operate the equipment.

NOTE: This equipment has been tested and found to comply with the limits for a Class B digital device, pursuant to Part 15 of the FCC Rules. These limits are designed to provide reasonable protection against harmful interference in a residential installation. This equipment generates, uses and can radiate radio frequency energy and, if not installed and used in accordance with the instructions, may cause harmful interference to radio communications. However, there is no guarantee that interference will not occur in a particular installation. If this equipment does cause harmful interference to radio or television reception, which can be determined by turning the equipment off and on, the user is encouraged to try to correct the interference by one or more of the following measures:

- Reorient or relocate the receiving antenna.
- Increase the separation between the equipment and receiver.
- Connect the equipment into an outlet on a circuit different from that to which the receiver is connected.
- Consult the dealer or an experienced radio/TV technician for help.

NOTE: This device and its antenna(s) must not be co-located or operation in conjunction with any other antenna or transmitter

RF Exposure Statement

To maintain compliance with FCC's RF Exposure guidelines, This equipment should be installed and operated with minimum distance of 20cm the radiator your body. This device and its antenna(s) must not be co-located or operation in conjunction with any other antenna or transmitter