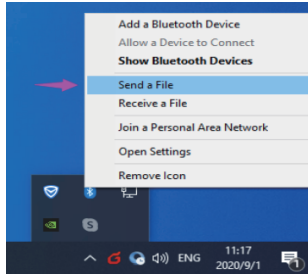


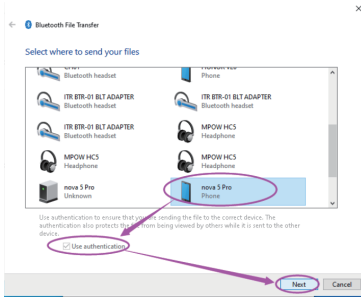
# Operation guide

## Computer sends files to mobile phone

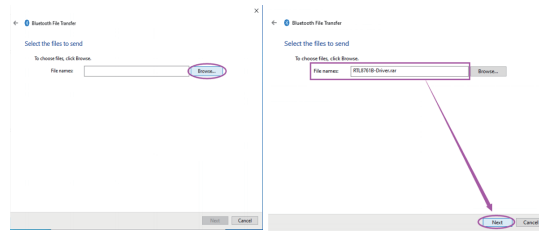
1. Right click on the computer operation icon and select "send file"



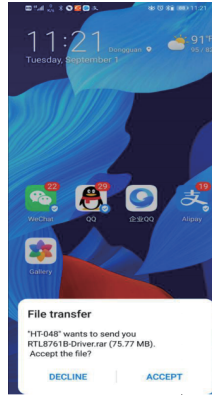
2. Select the Bluetooth device to send - "cancel use authentication" - "next"



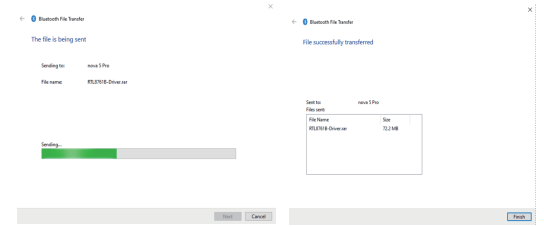
3. Then click "Browse" to select the file to be sent. After selecting the file, click "next"



4. To be received by mobile phone

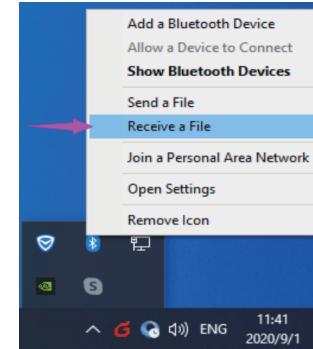


5. When the file transfer is completed, click finish

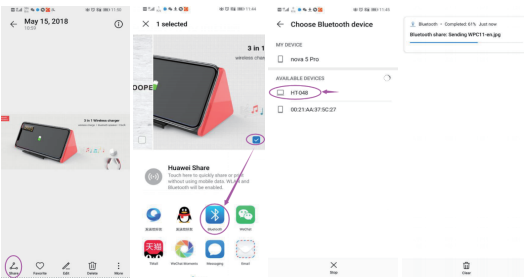


## Computer receives mobile phone files

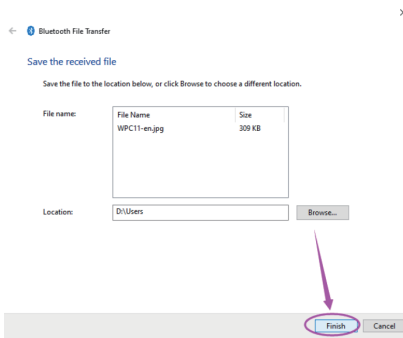
1. Right click the Bluetooth icon in the lower right corner of the computer and select "receive document (R)"



2. On the mobile phone, first select File - share (some mobile phones send) - click the name of the paired computer to start sending files to the computer

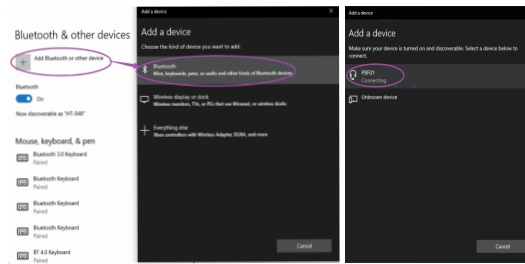
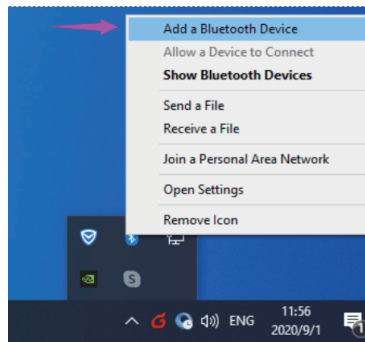


3. After receiving, select the default or specified location and click finish

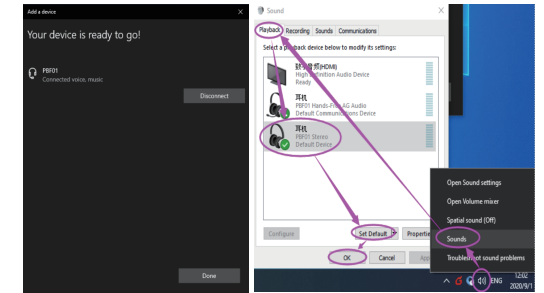


## Connect Bluetooth audio

1. Bluetooth audio is turned on and enters the pairing mode (the status is usually red and blue lights flashing alternately or Bluetooth flashing)  
2. Search for pairing connection (general audio devices do not need a password. If prompted, try "0000" or "1234")

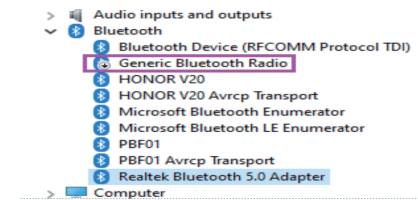


3. After the connection is successful, open the music player and listen to music wirelessly. If Bluetooth audio is silent, you can adjust the default audio device of the system



## Note appended:

1. Most laptops have their own Bluetooth function, as shown in the figure. The Bluetooth adapter inserted later will become a driver with exclamation mark (abnormal drive). You need to disable your own Bluetooth in the device manager (right click to disable the driver), and then reinsert a new Bluetooth adapter



2. IOS system mobile phone does not support file transfer

FCC Warning:

This equipment has been tested and found to comply with the limits for a Class B digital device, pursuant to part 15 of the FCC Rules. These limits are designed to provide reasonable protection against harmful interference in a residential installation. This equipment generates, uses and can radiate radio frequency energy and, if not installed and used in accordance with the instructions, may cause harmful interference to radio communications. However, there is no guarantee that interference will not occur in a particular installation. If this equipment does cause harmful interference to radio or television reception, which can be determined by turning the equipment off and on, the user is encouraged to try to correct the interference by one or more of the following measures:

- Reorient or relocate the receiving antenna.
- Increase the separation between the equipment and receiver.
- Connect the equipment into an outlet on a circuit different from that to which the receiver is connected.
- Consult the dealer or an experienced radio/TV technician for help.

Caution: Any changes or modifications to this device not explicitly approved by manufacturer could void your authority to operate this equipment.

This device complies with part 15 of the FCC Rules. Operation is subject to the following two conditions: (1) This device may not cause harmful interference, and (2) this device must accept any interference received, including interference that may cause undesired operation.

The device has been evaluated to meet general RF exposure requirement. The device can be used in portable exposure condition without restriction.