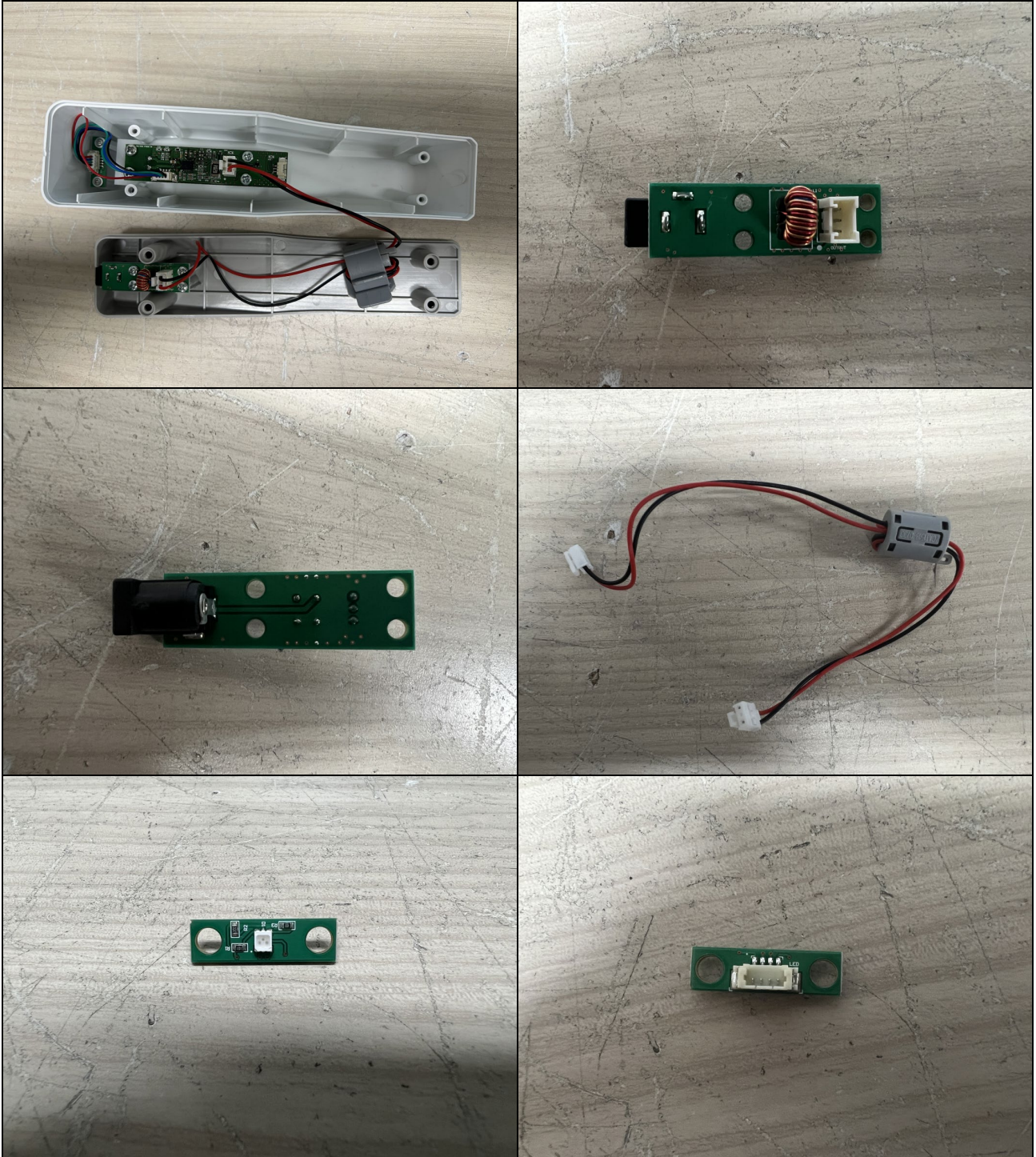
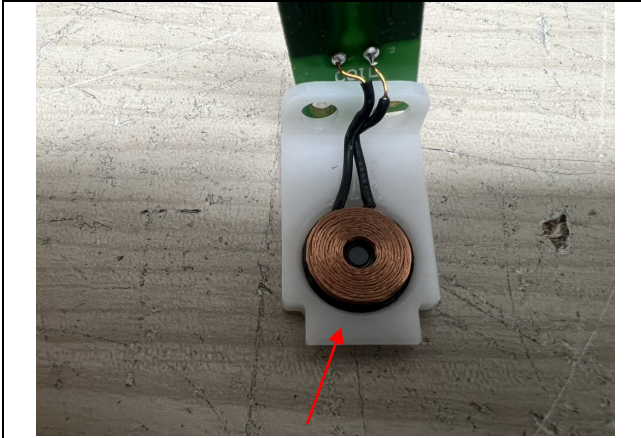
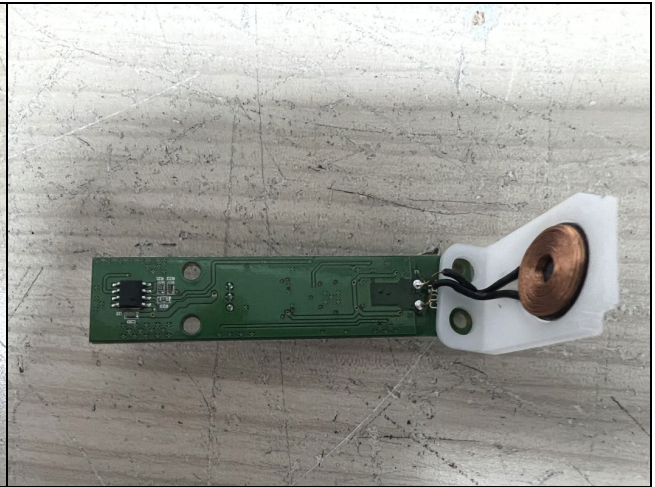
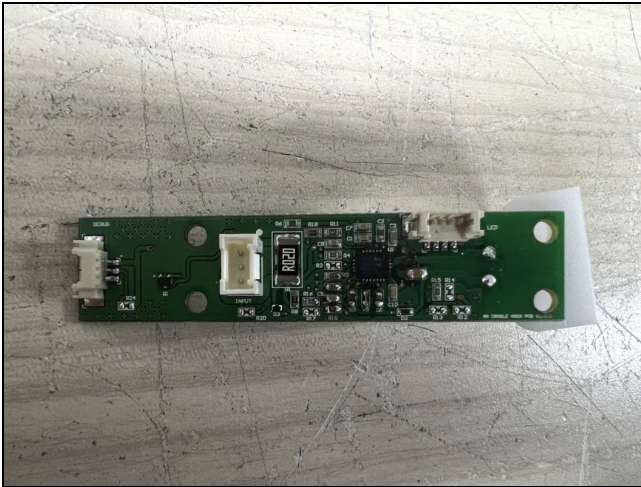


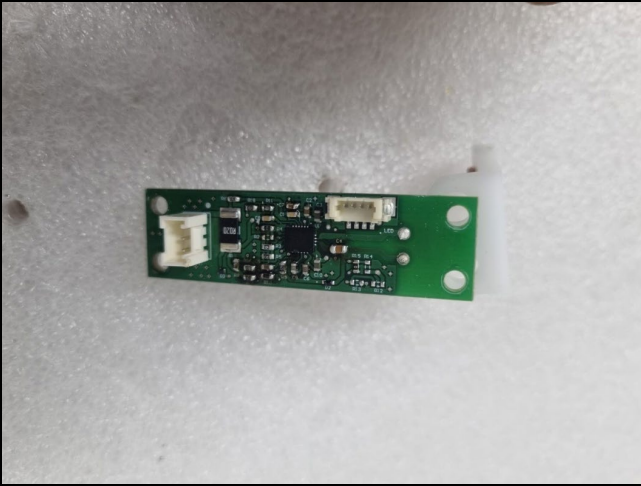
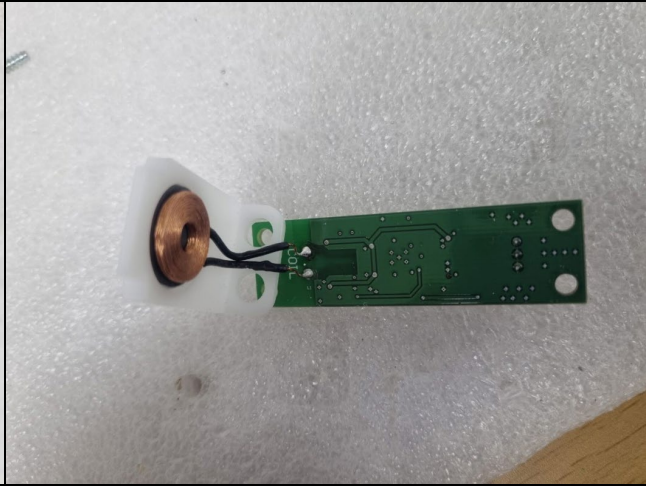
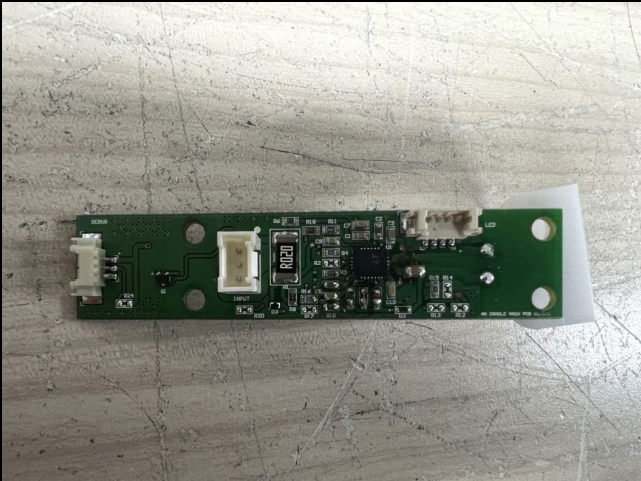
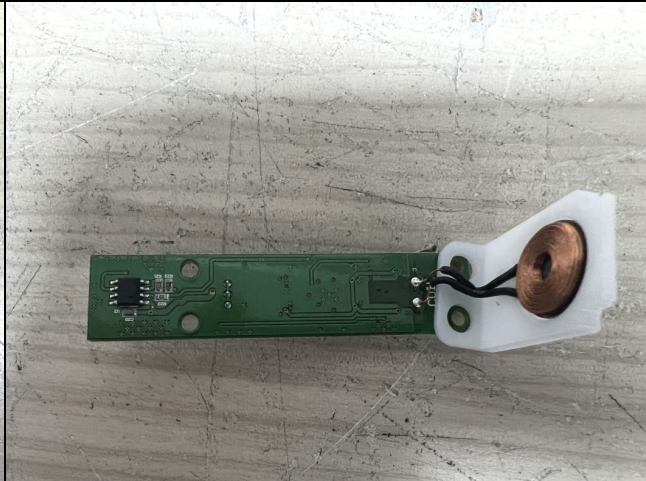
## Internal photos





Coil Antenna

N/A

Existing main board - Top	Existing main board - Bottom
 A photograph showing the top view of an existing green printed circuit board (PCB). The board is rectangular and populated with various electronic components, including a central microcontroller, several integrated circuits, and surface-mount components. A white plastic connector is visible on the left side. The board is resting on a white surface.	 A photograph showing the bottom view of the existing green PCB. A prominent feature is a large, circular copper pad on the left side, which is connected to the board's traces. Two thin black wires are soldered to the board near this pad. The board is resting on a white surface.
New main board - Top	New main board - Bottom
 A photograph showing the top view of a new green PCB. This board is more densely populated with components than the existing one, featuring a larger microcontroller, more integrated circuits, and various passive components. A white plastic connector is visible on the left side. The board is resting on a metallic, brushed metal surface.	 A photograph showing the bottom view of the new green PCB. Similar to the existing board, it features a large circular copper pad on the left side, connected to the board's traces. Two thin black wires are soldered to the board near this pad. The board is resting on a metallic, brushed metal surface.