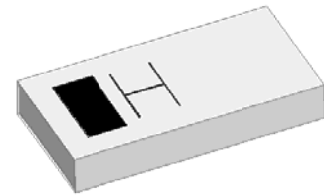


2.4GHz 3216 Chip Antenna: ANT3216R24003KL6

Application:

WLAN, 802.11b/g, Bluetooth, etc...



Features

SMD, high reliability, ultra compact, Omni-directional...

Part number

ANT 3216 R 2400 3K L6
 (1) (2) (3) (4) (5)

(1) Size Code	3.2x1.6mm
(2) Packing	Tape and reel
(3) Frequency	2.4GHz
(4) Packing Number	3K
(5) Code	L6

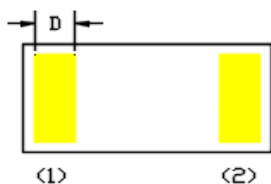
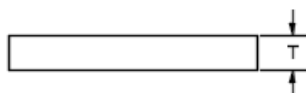


Electrical Specification

Working Frequency Range	2400 ~2484 MHz
Peak Gain	0.50 dBi (Typ.)
Impedance	50 Ohm
VSWR	2.5 (Max)
Polarization	Linear
Azimuth Beamwidth	Omni-directional
Operation Temperature(°C)	-40~85°C

The specification is defined on 海福地 YSB5 PCB.

Dimension and Terminal Configuration



Dimension (mm)	
L	3.20±0.15
W	1.60±0.15
T	0.50±0.10
D	0.50±0.15

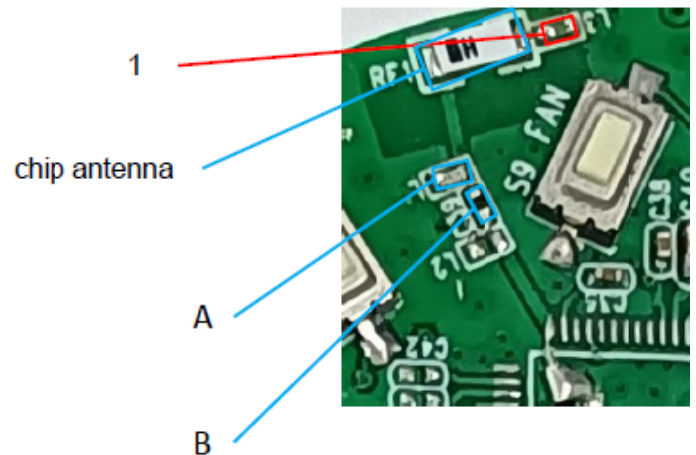
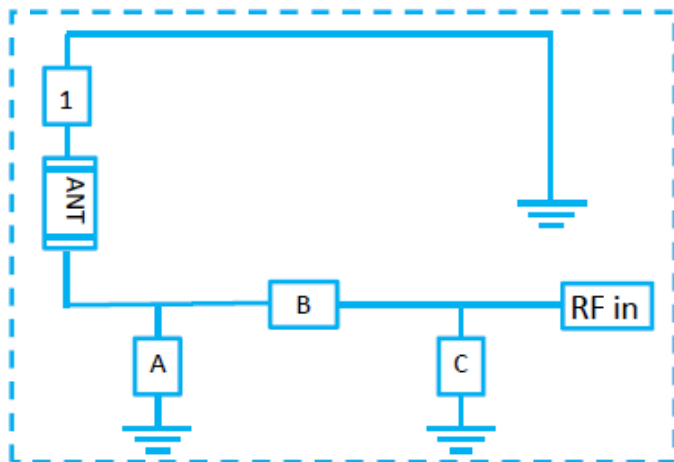
No.	Terminal Name
1	Feeding
2	Soldering

Evaluation Board Reference

PCB Dimension



Antenna Layout Reference



Antenna : ANT3216R24003KL6

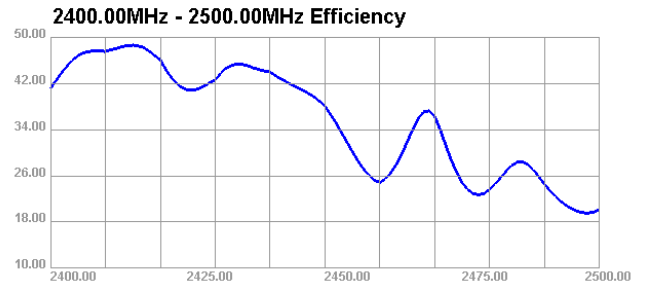
NO	Product	Brand	Description	P/N
1	Inductor	muRata	0402 3.6nH ±0.1nH 50V	LQG15HN3N6B02
A	Capacitor	muRata	0402 1.5pF ±0.1pF 50V	GCM1555C1H1R5BA16
B	resistance	muRata	0402 0Ω ±5%	RC0402JR-070R
C	OPEN	N/A	N/A	N/A



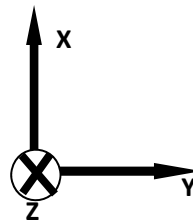
2.4GHz 3216 Chip Antenna: ANT3216R24003KL6

Electrical Characteristics

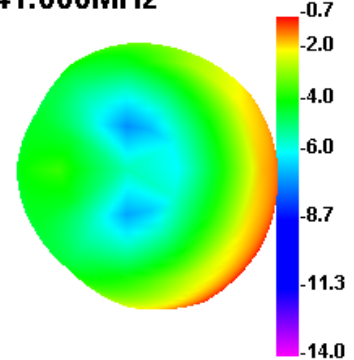
Return Loss & Efficiency



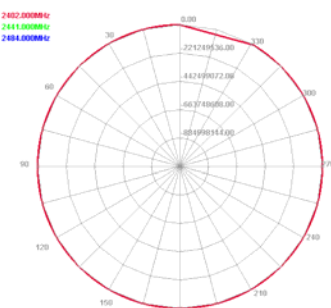
Radiation Pattern



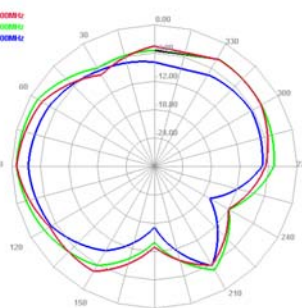
2441.000MHz



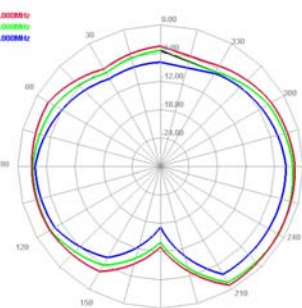
Horizontal



E1 Face



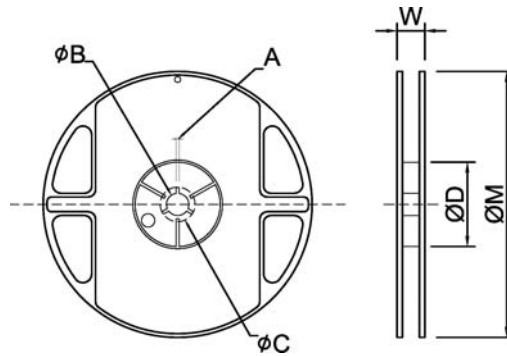
E2 Face



Taping Specifications

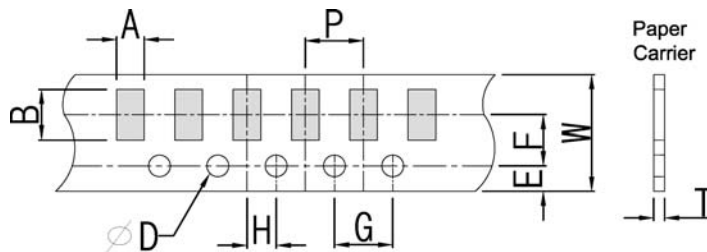
Reel and Taping Specification

Reel Specification



TYPE	SIZE		A	ψB	ψC	ψD	W	ψM
3216	7"	3K/Reel	2.0±0.5	13.5±1.0	21±1.0	60±1.0	11.5±2.0	178±2.0

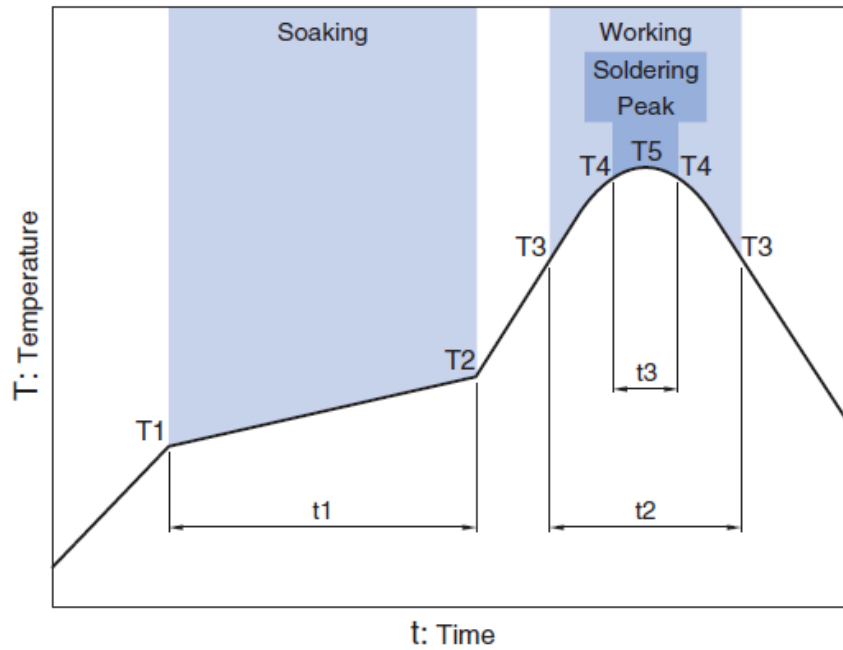
Taping Specification



Packaging	Type	A	B	W	E	F	G	H	T	ψD	P
Paper Type	3216	1.90±0.20	3.50±0.20	8.0±0.20	1.75±0.10	3.5±0.05	4.0±0.10	2.0±0.05	0.75±0.10	1.50 +0.10 -0	4.0±0.1

Recommended Reflow Profile

Pb free solder



Soaking		Working		Soldering		Peak	
Temp.	Time	Temp.	Time	Temp.	Time	Temp.	
T1	T2	t1	T3	t2	T4	t3	T5
150°C	180°C	60 to 120sec	230°C	more than 30sec	247 to 253°C	within 10sec	260°C Max.

Sept 2022 Ver.H01