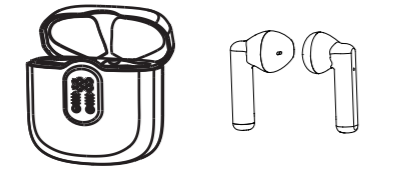


### User Guide for MD026M

True Wireless Stereo Earphones

#### Table of Product Contents



Charging Case\*1  
Wireless Earbud\*2



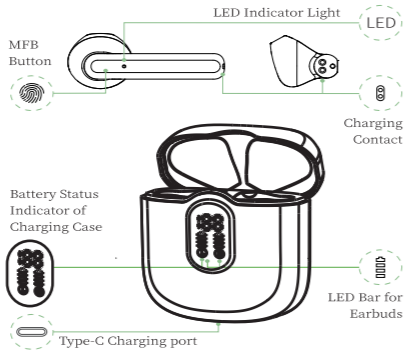
Type-C Charging Cable\*1  
Instruction Book

#### Product Specification

Bluetooth Version: 5.3  
Support: HSP/HFP/A2DP/AVRCP

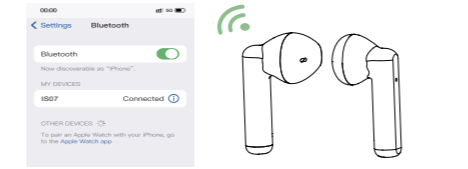
Charging Port: Type-C  
Battery capacity: Earbuds: 25mAh  
Battery life: 6 hours of use per full charge  
(actual battery life varies with song type and volume requirements)  
Charging time: 1 hour for earbuds / 1 hour for charging case  
Transmission range: 15 meters (without obstacles)

#### Introduction



#### How do I pair two headphones with my phone?

- Please make sure both the earbuds and the charging case are fully charged before first use.
- Step 1: Take both earbuds out of the charging case and both earbuds will power on and start pairing automatically. (If the earbuds are not connected to your device for more than 5 minutes, the earbuds will automatically turn off. Press the MFB button for about 3 seconds to manually turn on the earbuds when prompted "Power on".) The indicator light of one earbud will flash red and blue alternately, and the indicator light of the other earbud will slowly flash blue when paired successfully.
- Step 2: Enable the Bluetooth pairing mode on your phone device, search and select "IS07" to connect. (You should hear a voice prompt "connected" when wearing earbuds).
- If indicator light of earbud is off, it means the phone is connected.
- Automatic connection: By default, the earbuds will connect to the last paired mobile automatically when power on.

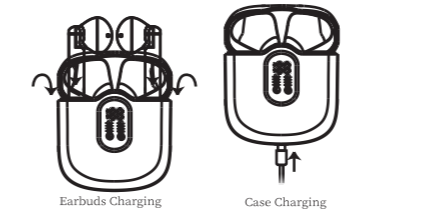


#### Functions

- Prompt: 1. If you have any problem pairing the two earbuds with your phone, put the earbuds back in the charging case and repeat the above steps. 2. These earbuds can be used not only together, but also individually. If you want to use single earbud: Just take one earbud out of the case and connect it to your phone. or when using two earbuds, manually turn off one earbud or put one back in the charging case and you'll be able to use the other one earbud alone.
- Telephone Communication: Answer call: Tap once; Hang up: Press and hold the key for 2s; Refuse incoming call: Press and hold the key for 2s.
- For Music: Play/pause: Tap twice; Previous track: Press and hold "L" for 2s; Next track: Press and hold "R" for 2s; Activate Siri: Quick tap for three times; Turn down volume: Single tap on left earbud; Turn up volume: Single tap on right earbud.

#### Charging

- Earbuds Charging: The earbuds will only be charged when you correctly place them in the charging slots and close the lid. (You can charge the charging case and the earbuds at the same time, or you can charge the charging case first and then the earbuds.) The charging case will stop charging automatically and the indicator light on earbuds will go out when fully charged. When the earbuds are charging in the charging case, the digital display bar of the case will keep blink and turn off after 60 seconds.
- Case Charging: There is a Type-C usb charging cable in the package, please use it to charge the case directly. During charging, the digital display will flash and display the battery level in real time. When fully charged, the number shows 100.



Earbuds Charging  
Case Charging

#### Charging Alerts

- After using it for a long period of time, due to the oxidation of the magnet connector, the earbuds might not be charged or even turned on. You can fix this problem by cleaning the magnet connectors on the earbuds and charging case with an alcohol wipe.
- Put the earbuds in the charging case, the earbuds will turn off immediately and the charging case will start to charging automatically. The earbuds will connect the last paired mobile automatically.

#### Storage and Maintenance

- If the earbuds have not been used for more than 3 months, we recommend that you charge it.
- Please use an charger approved by FCC (Federal Communications Commission).
- Do not disassemble the earbuds.
- Children aged 12 and under require adult supervision.
- Do not expose the earbuds to high or low temperatures, and do not use the earbuds during a thunderstorm.
- Avoid free fall or violent shock to the device. Keep the device away from sources of fire and do not place the device in water.

#### Frequently Asked Questions

- Q : Why don't these earbuds pair with my phone?  
A : Make sure the earbuds are fully charged and powered on. Make sure your phone's Bluetooth is enabled. If there is no problem with the two points stated above, turn off the powered-on earbuds after 5 continuous and quick clicks. Put them back into the charging case and close the lid, wait for 1 minute, then open the charging case and reconnect the earbuds to the phone.

- Q : Why does the music cut in or out?  
A : First, keep the earbuds no more than 49 feet away from your phone (no obstacles). If the distance is less than 49 feet, follow these steps: 1. Put the earbuds back into the case and close the lid, manually click "forget the IS07" on your phone. 2. After 10 seconds, open the charging case and reconnect these earbuds with your phone.

- Q : Why the earbuds still won't be charged or disconnect from the phone after I put them in the case and close the lid?  
A : Make sure the charging case is not in a low battery state. If the charging case is in a low battery state, the earbuds will neither be charged nor disconnected. In this case, please use a type-c charging cable to fully charge the case.

- Q : Are these earbuds sweat- and water-resistant?  
A : These earbuds are sweatproof and slightly waterproof. For electronic devices, we do not recommend that you submerge the earbuds in water.

For more detailed product FAQs, please contact our customer service.

#### Activation & Warranty

Permanent replacement of damaged, defective, Please activate via email below within 15 days. "aseller384@gmail.com"

#### IC Caution:

This device complies with Industry Canada's licence-exempt RSSs. Operation is subject to the following two conditions: (1) This device may not cause interference; and (2) This device must accept any interference, including interference that may cause undesired operation of the device.

The device has been evaluated to meet general RF exposure requirement. The device can be used in portable exposure condition without restriction.

Le présent appareil est conforme aux CNR d'Industrie Canada applicables aux appareils radio exempts de licence. L'exploitation est autorisée aux deux conditions suivantes:

- (1) l'appareil ne doit pas produire de brouillage, et
- (2) l'utilisateur de l'appareil doit accepter tout brouillage radioélectrique subi, même si le brouillage est susceptible d'en compromettre le fonctionnement.

L'appareil a été évalué pour répondre aux exigences générales en matière d'exposition aux RF. L'appareil peut être utilisé en condition d'exposition portable sans restriction.

#### FCC Caution :

This device complies with part 15 of the FCC Rules. Operation is subject to the following two conditions: (1) This device may not cause harmful interference, and (2) this device must accept any interference received, including interference that may cause undesired operation of the device.

Any Changes or modifications not expressly approved by the party responsible for compliance could void the user's authority to operate the equipment.

Note: This equipment has been tested and found to comply with the limits for a Class B digital device, pursuant to part 15 of the FCC Rules. These limits are designed to provide reasonable protection against harmful interference in a residential installation.

This equipment generates uses and can radiate radio frequency energy and, if not installed and used in accordance with the instructions, may cause harmful interference to radio communications. However, there is no guarantee that interference will not occur in a particular installation. If this equipment does cause harmful interference to radio or television reception, which can be determined by turning the equipment off and on, the user is encouraged to try to correct the interference by one or more of the following measures: -Reorient or relocate the receiving antenna.

- Increase the separation between the equipment and receiver.
- Connect the equipment into an outlet on a circuit different from that to which the receiver is connected.
- Consult the dealer or an experienced radio/TV technician for help.

The device has been evaluated to meet general RF exposure requirement. The device can be used in portable exposure condition without restriction.