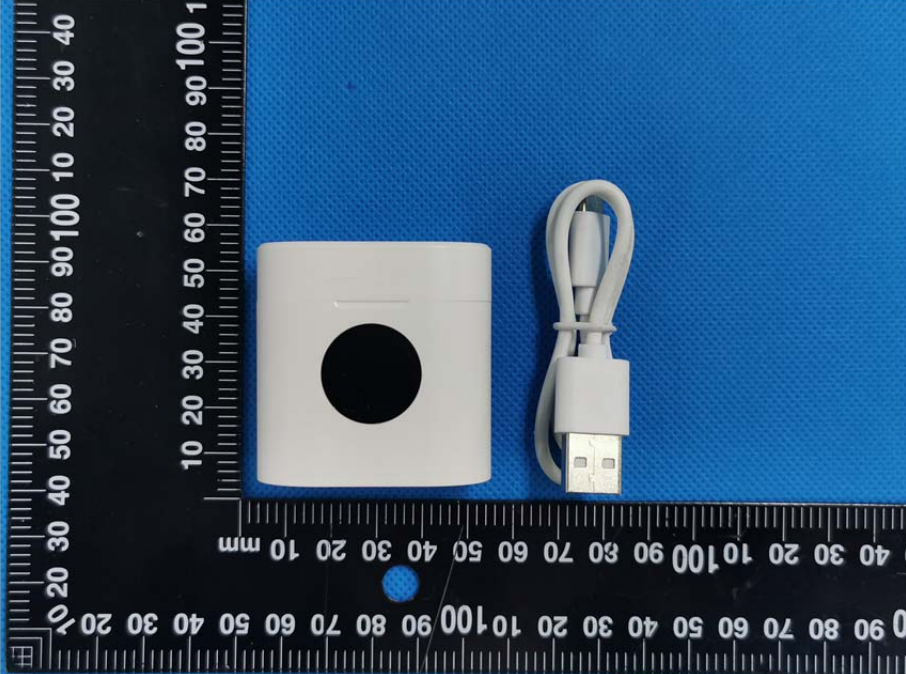
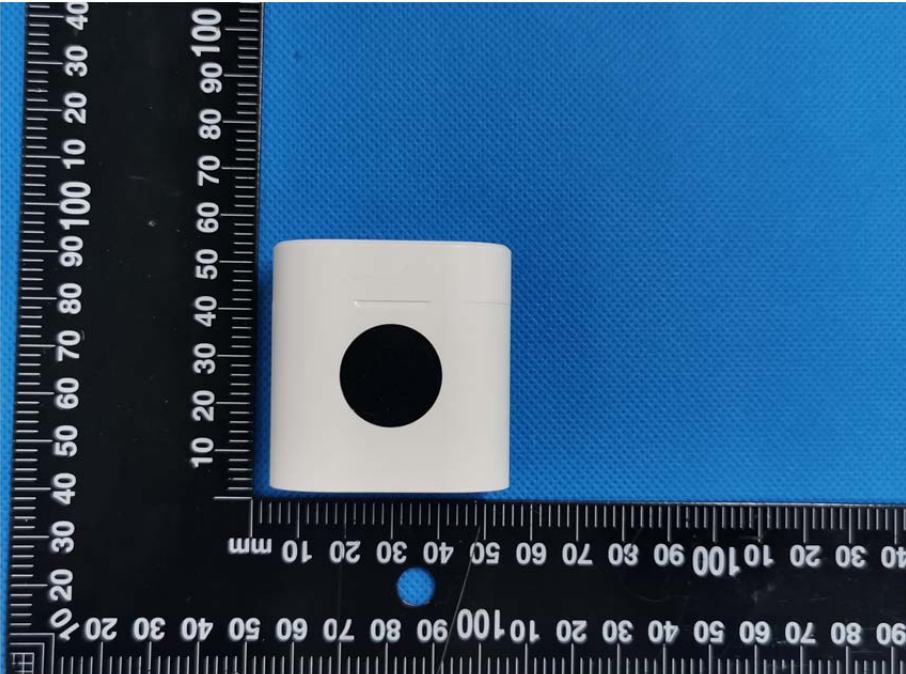
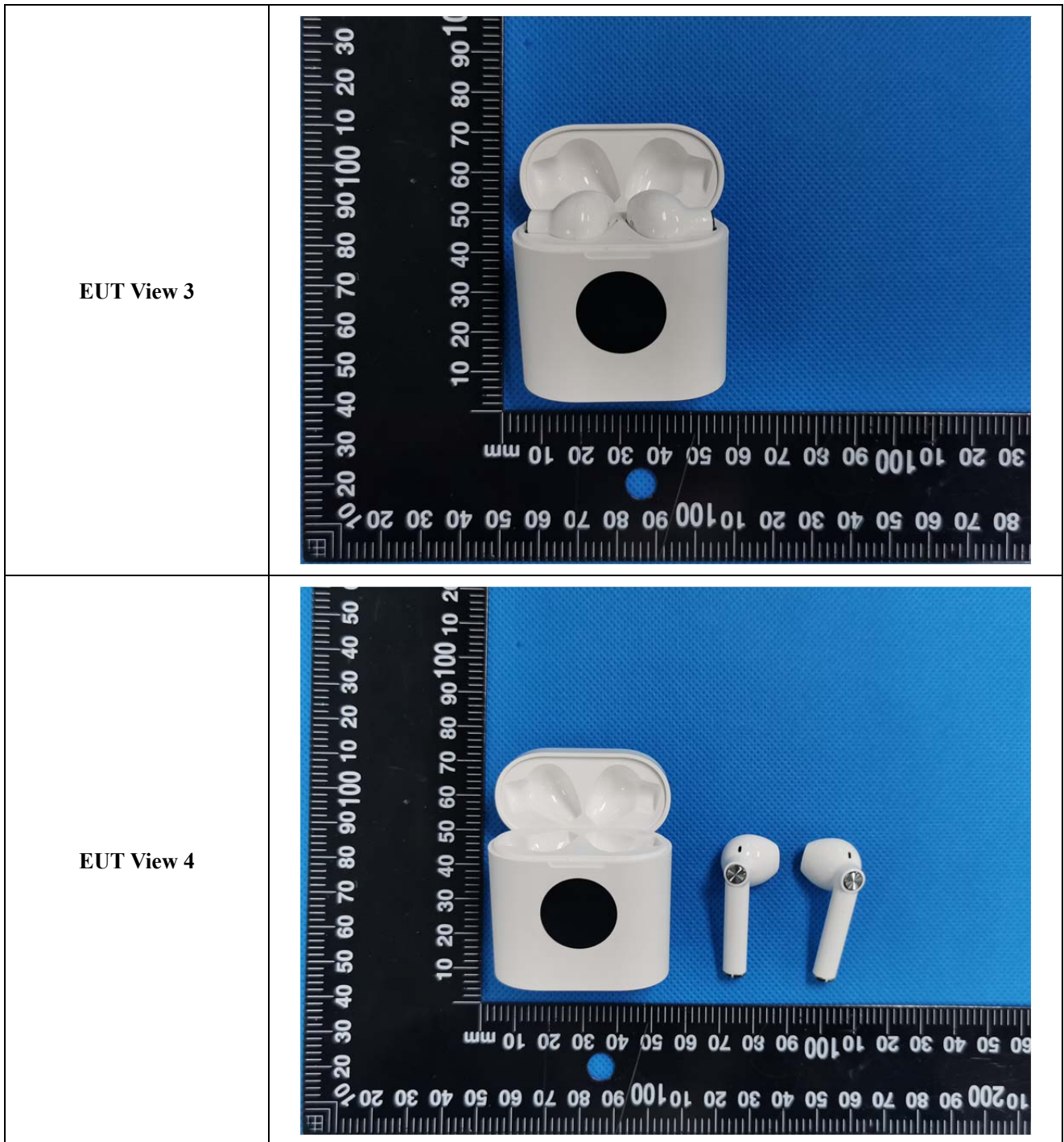
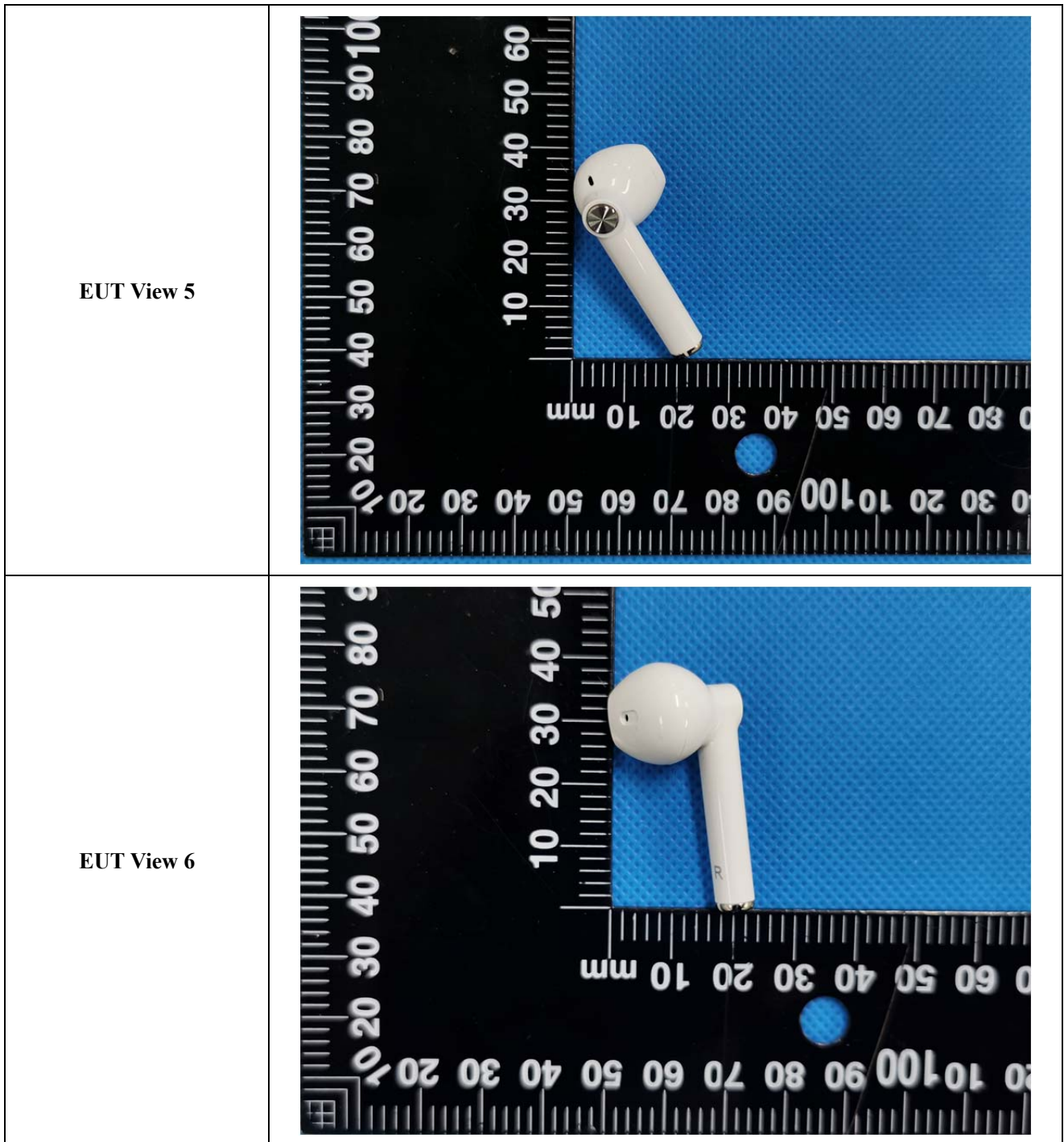


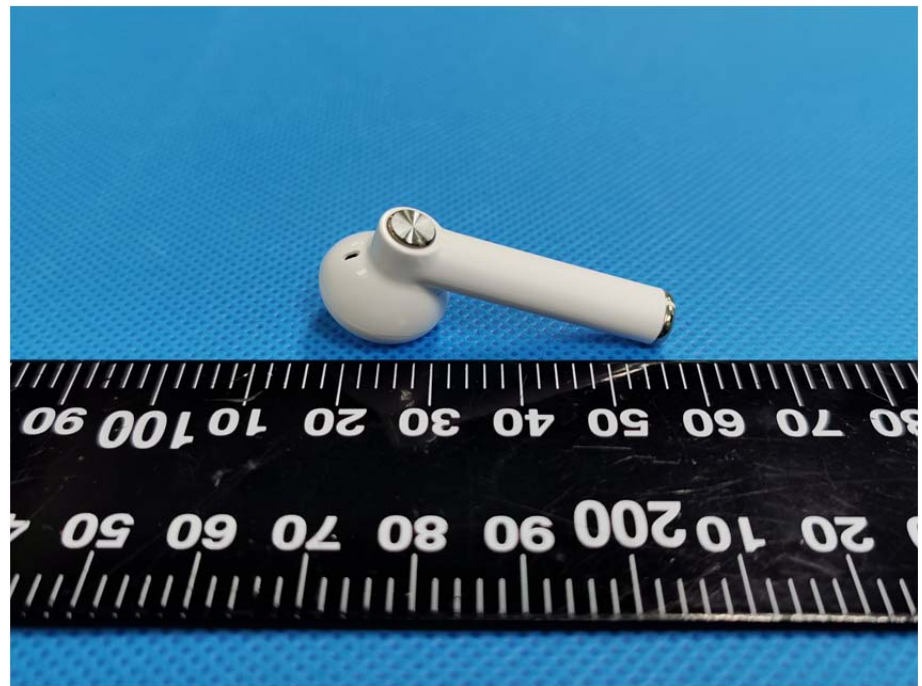
EXHIBIT 2 - EUT EXTERNAL PHOTOGRAPHS

<p>EUT View 1</p>	 A photograph showing a white, square-shaped Electronic Under Test (EUT) device with a circular cutout in the center. To its right is a white USB cable with a standard USB-A connector. Both are placed on a blue textured surface. A black ruler with white markings is positioned vertically to the left of the device, showing measurements in millimeters. The ruler is oriented vertically with the 0 mark at the top and 100 mm at the bottom.
<p>EUT View 2</p>	 A photograph showing the same white, square-shaped EUT device with a circular cutout. It is placed on a blue textured surface. A black ruler with white markings is positioned vertically to the left of the device, showing measurements in millimeters. The ruler is oriented vertically with the 0 mark at the top and 100 mm at the bottom.







EUT View 7



EUT View 8



<p>EUT View 9</p>	 A photograph of a white ceramic component, labeled 'EUT View 9'. The component has a long, thin cylindrical stem on the left and a rounded, bulbous head on the right. The head has a small circular opening at its base. The component is placed on a blue textured surface. Below the component is a black ruler with white markings, showing a scale from 0 to 100. The ruler is oriented horizontally, with the 0 mark on the left and the 100 mark on the right.
<p>EUT View 10</p>	 A photograph of the same white ceramic component, labeled 'EUT View 10'. This view shows the rounded head of the component, which has a small circular opening at its base. A small protrusion is visible on the top surface of the head. The component is placed on a blue textured surface. Below the component is a black ruler with white markings, showing a scale from 0 to 100. The ruler is oriented horizontally, with the 0 mark on the left and the 100 mark on the right.