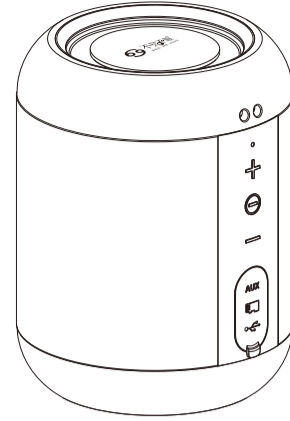


Size:130x85MM



E7-L Bluetooth Speaker

USER MANUAL

This device complies with part 15 of the FCC Rules. Operation is subject to the following two conditions: (1) this device may not cause harmful interference, and (2) this device must accept any interference received, including interference that may cause undesired operation. Any changes or modifications not expressly approved by the party responsible for compliance could void the user's authority to operate the equipment. NOTE: This equipment has been tested and found to comply with the limits for a Class B digital device, pursuant to Part 15 of the FCC Rules. These limits are designed to provide reasonable protection against harmful interference in a residential installation. This equipment generates, uses and can radiate radio frequency energy and, if not installed and used in accordance with the instructions, may cause harmful interference to radio communications. However, there is no guarantee that interference will not occur in a particular installation. If this equipment does cause harmful interference to radio or television reception, which can be determined by turning the equipment off and on, the user is encouraged to try to correct the interference by one or more of the following measures: -- Reorient or relocate the receiving antenna. -- Increase the separation between the equipment and receiver. -- Connect the equipment into an outlet on a circuit different from that to which the receiver is connected. -- Consult the dealer or an experienced radio/TV technician for help. The device has been evaluated to meet general RF exposure requirement. The device can be used in portable exposure condition without restriction.

FCC ID: 2AXOX-E7-L

01 Warnings

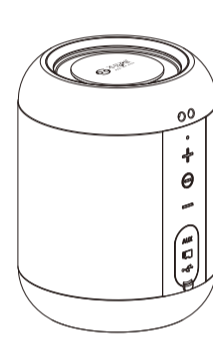
English



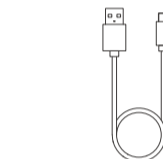
- ◆To ensure proper use and trouble-free operation, please carefully read this user manual first.
- ◆For the first use, a full charge is recommended.
- ◆Please use and store the product at room temperature.
- ◆Do not throw and drop the product to avoid damages.
- ◆Do not expose the product to fire, high temperature, direct sunlight, etc.
- ◆Do not use organic solvents or other chemicals to clean the product.
- ◆Do not allow small particles to get into the product.
- ◆Please keep volumes of the speaker moderate to avoid temporary or permanent hearing impairment.
- ◆Do not disassemble the product, or make any modifications to the structure or any parts of it.
- ◆Keep the product out of children's reach.

02 Packing details

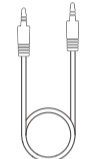
English



E7-L Speaker 1pc



USB Type-C Charging Cable 1pc



3.5MM Audio cable 1pc



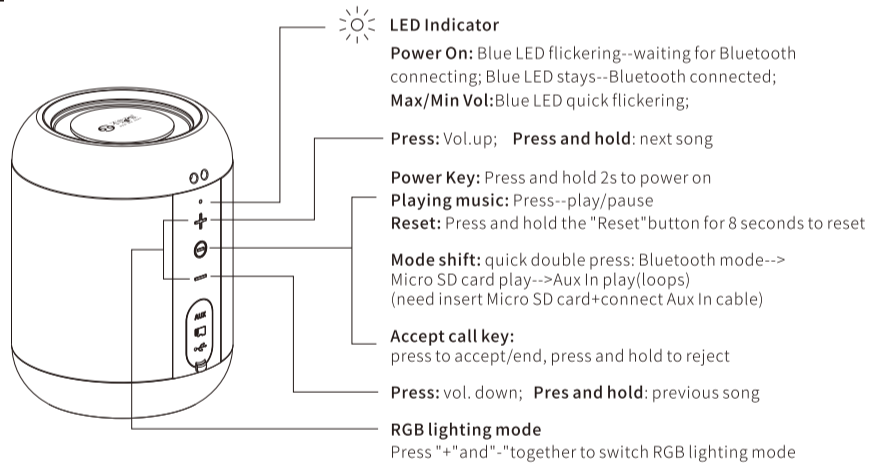
User manual



Lanyard 1pc

03 Buttons'function

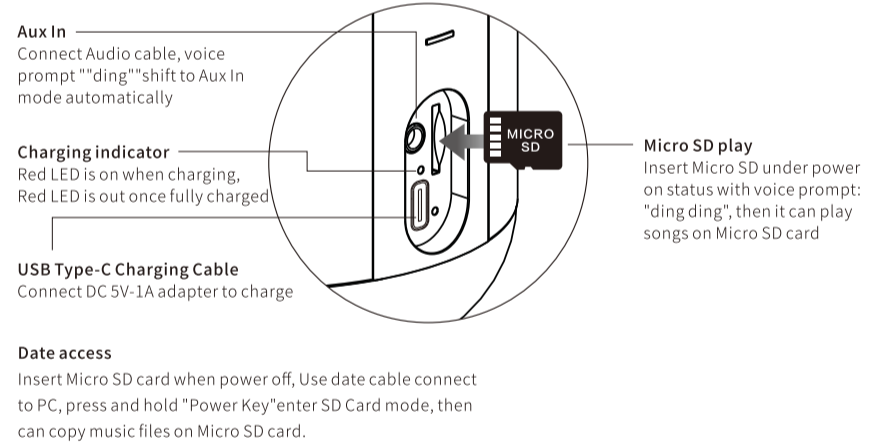
English



Bluetooth disconnect
 Press and "-" "+" at the same time can disconnect current device, and E7 goes to discoverable status; If press "" power key"" can reconnect last Bluetooth device

04 Ports'function indicator

English



05 Bluetooth connecting

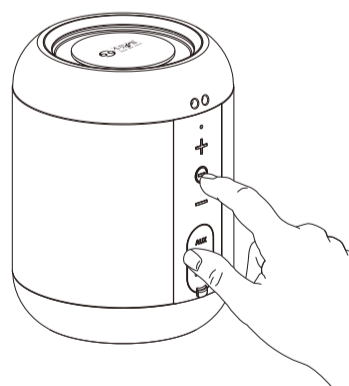
English

1, Power on
 Press and hold "power key" 2s, with voice prompt "ding dong" and "ding" Bluetooth LED flickering, waiting to connect.

2, Bluetooth connect
 Go to device's Bluetooth page, find and connect the pairing name: E7-L With a voice" dong dong ding" and the Blue LED stays.

Can connect E7-L automatically once open the device's Bluetooth function in next use

Other tips
 If need connect to other Bluetooth device, press and hold "+" "-" at the same time disconnect current device, E7-L goes to connecting status.



06 True wireless stereo function



Main Speaker



Slave Speaker

1, TWS connection
 Power on both E7-L, and both under disconnect status, choose one of them and double press "+" "-" at the same time once connected, the other E7-L's LED will stay.

2, Let TWS speakers connect to Bluetooth device
 Go to the device's Bluetooth page, and find E7-L to connect, the LED will stay.

3, TWS disconnect
 Take each of them, double press "+" "-" at the same time, can disconnect TWS.

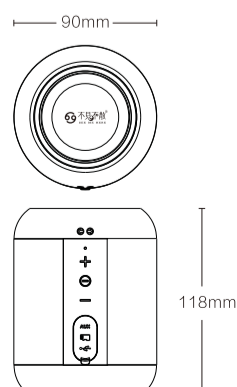
Tips:
 01, Let 2pcs E7-L connect, for the 1st one you double press "+" "-", this one is the main speaker (left channel), and the other one is the follow speaker(right channel).
 02, Only support 2pcs speakers under TWS connection.

03, Will keep precious main/fellow relationship and reconnect TWS for next time use.
 04, Once TWS connected, fellow speaker's LED keeps stay, and main speaker's LED indicate the status of play, pause, Bluetooth connection etc.
 05, Under TWS, operate each of them, the other one has synchronous operation.

07 Technical Specification

English

Basic	
Type	Bluetooth Speaker
Micro SD card	Support no more than 32G
Power Supply	Built-in 2000mAh Li-ion battery DC5V-1A USB adapter
Technical	
Trumpet	52MM trumpet with X-bass radiator
Output	7.5W THD=10%
Frequency Response	100Hz-18KHz
BT verion	Bluetooth 5.0
Music files	MP3, WMA, WAV, APE, FLAC MP3:8Kbps-320Kbps WMA:32Kbps-384Kbps WAV:32Kbps-1414Kbps



Product Size:118×90×90mm
Product weight:437g (Including built-in Lithium battery)

08 FAQ

English

Questions	Solutions
Can not connect	1, Restart the speaker 2, If need passcode, enter 0000
Discontinuity	1, No more than 10M between the device and speaker 2, No barrier between the device and speaker
Micro SD can not play	1, the Micro SD should be under FAT32 format 2, the formats of music files should be WAV, MP3, WMA
No Sound when play	1, Check the volume's ajustment 2, Check whether under pause or mute status
Can not power on	1, Check whether low battery
No response	1, Once crash, restart the speaker via restart key.