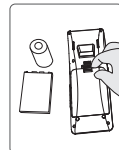


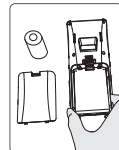
Safety Alert

- Do not contact the terminal and accessories with liquid or be put in moist environment.
- Do not put the terminal in overheating or super cooling environment.
- Do not drop the terminal.
- Do not put the terminal together with computer disc, credit card, travel card and other magnetic stuff, otherwise, the information stored in the magnetic cards will be affected.
- Do not throw the terminal into fire.
- Do not try to disassemble the terminal and any accessories by yourself.
- Please use slightly wet and anti-static cloth to clean the terminal screen.
- Do not use detergent with chemicals or scrub component which may damage the terminal body and screen.
- Keep the terminal with care and avoid of impact and squeezing, because the LCD screen and camera are fragile components.
- When the user use the third party's root tool or update with unauthorized operation system, it will bring risk to the normal operation system.

Installation Instructions

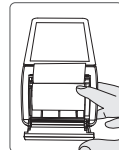


1. Open the battery cover
To pull the battery cover gently from the notch



2. Battery insertion and extraction
Insert the battery and make the battery metallic contactors to connect with the terminal metallic contactors, press the battery down and push the battery into the cabin gently; lift the battery lightly from the notch and pull it out.

Important Notice: please insert and extract the battery in accordance with the instructions to avoid damage to the battery and terminal.



3. Paper roll installation
The direction of the paper roll is as shown in the picture

Important Notice: only one side of the thermal printing paper is printable; please refer to the above picture to install.

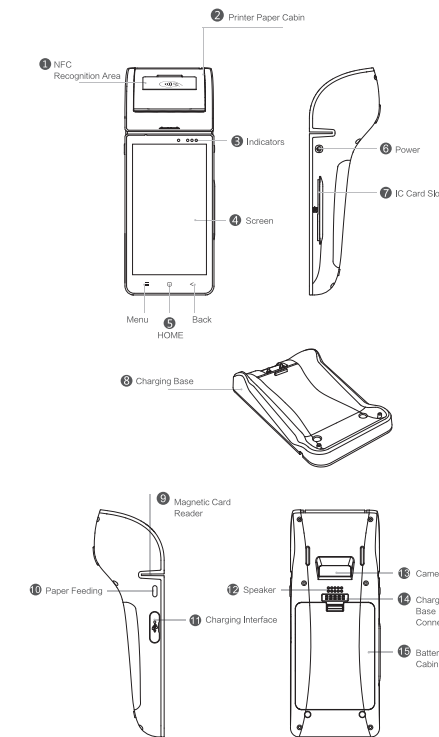
Accessories

Power adaptor, USB cable, Battery, One Paper Roll, Charging Base

Quick Guide

WPOS-3

Product Details



1. **NFC Recognition Area:** to recognize NFC card
2. **Printer Paper Cabin:** to insert printing paper
3. **Indicators:** indicating terminal working status
4. **Screen:** display and touch operation
5. **HOME:** single press to return homepage, double press to manage the running APPS
6. **Power:** long press to power on/off; short press to activate or shut down the screen
7. **IC Card Slot:** to swipe IC card
8. **Charging Base:** to place and charge the terminal
9. **Magnetic Card Reader:** to swipe magnetic card
10. **Paper Feeding:** press this button to feed paper
11. **Charging Interface:** to insert micro USB 5 pin plug of charger
12. **Speaker:** to play sound
13. **Camera:** scanning and photography
14. **Charging Base Connector:** to connect with the charging base
15. **Battery Cabin:** to place and protect the battery

Main Specifications

- Operation System: Android 8.1
- CPU: Qualcomm Quad-Core
- Communications:
 - FDD/WCDMA/HSPA/GSM/EDGE/WIFI2.4+5G/
- Bluetooth DL: 7.2Mb, UL5.76Mb
- Memory: 1GB RAM, 8GB ROM / 2GB RAM, 16GB ROM(optional)
- Screen: 5.5" LCD
- Camera: 5 Mega Auto Focus Focus(optional)
- BT: BT4.0, Dual Mode
- Wifi: WLAN802.11a/b/g/n
- NFC: 13.56MHz
- Magnetic Card Reader: Track 1/2/3
- IC Card Reader: ISO7816, Encrypted Head
- PSAM Card Slot: 2 Slots
- SIM Card Slot: 1 Slot, 3V/1.8V
- Printer: 2 inch thermal printer, paper cabin diameter:40mm
- Battery: 3.7V, 6000mAh, Li-polymer

FCC Statement

Any Changes or modifications not expressly approved by the party responsible for compliance could void the user's authority to operate the equipment. This device complies with part 15 of the FCC Rules. Operation is subject to the following two conditions: (1) This device may not cause harmful interference, and (2) This device must accept any interference received, including interference that may cause undesired operation.

Note : This equipment has been tested and found to comply with the limits for a Class B digital device, pursuant to part 15 of the FCC Rules. These limits are designed to provide reasonable protection against harmful interference in a residential installation. This equipment generates, uses and can radiate radio frequency energy and, if not installed and used in accordance with the instructions, may cause harmful interference to radio communications. However, there is no guarantee that interference will not occur in a particular installation. If this equipment does cause harmful interference to radio or television reception, which can be determined by turning the equipment off and on, the user is encouraged to try to correct the interference by one or more of the following measures:
—Reorient or relocate the receiving antenna.
—Increase the separation between the equipment and receiver.
—Connect the equipment into an outlet on a circuit different from that to which the receiver is connected.
—Consult the dealer or an experienced radio/TV technician for help.

This device has been tested FCC SAR and meets the FCC SAR limit demand