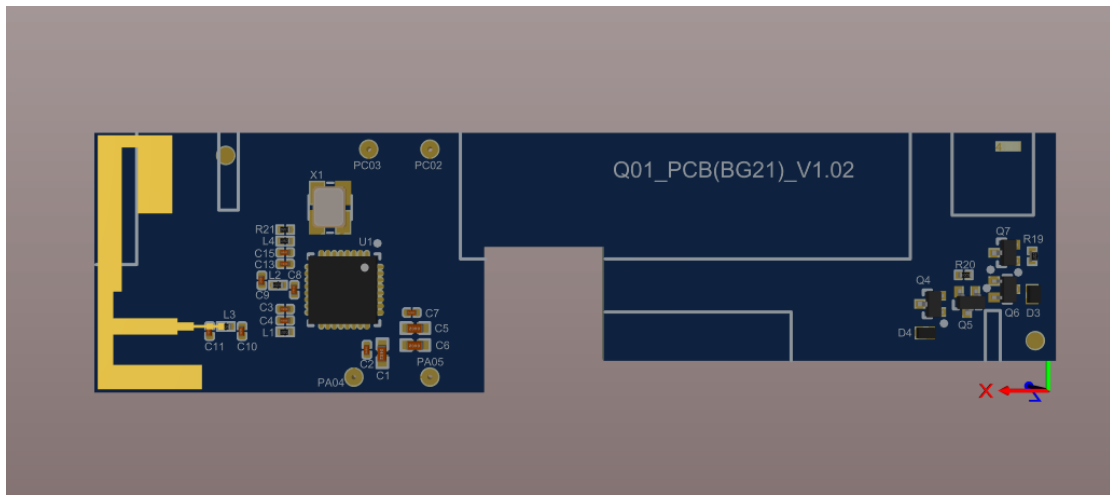
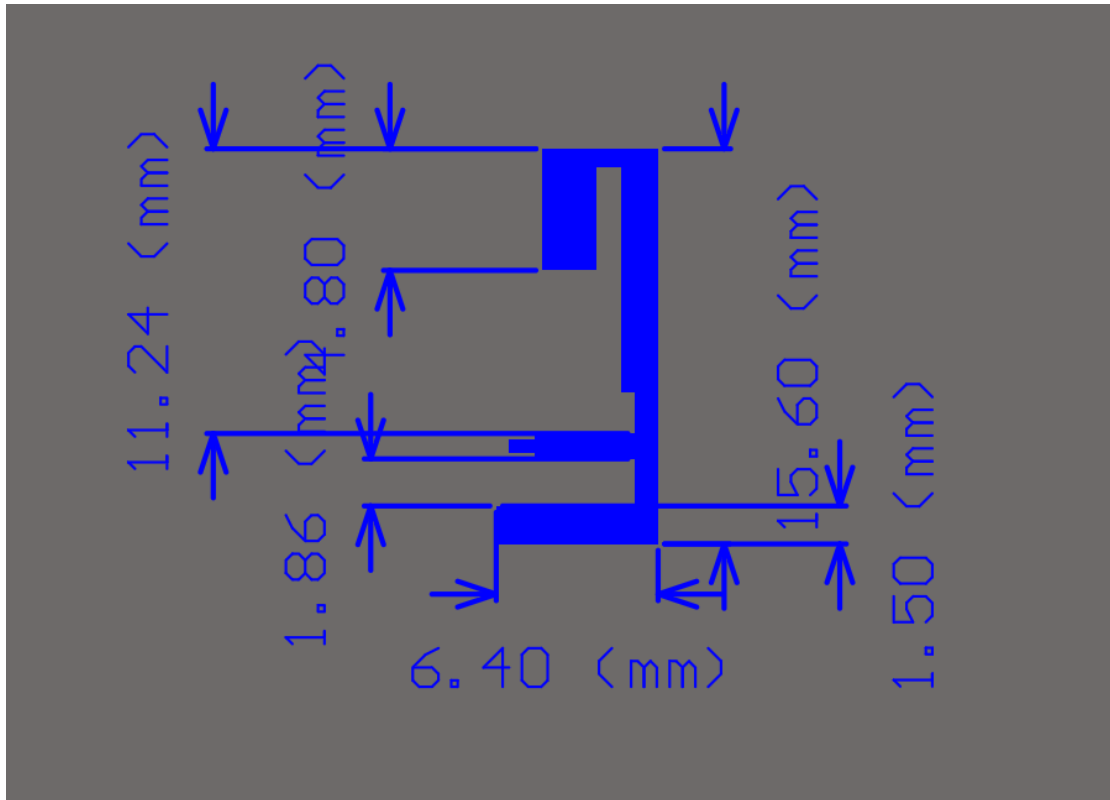
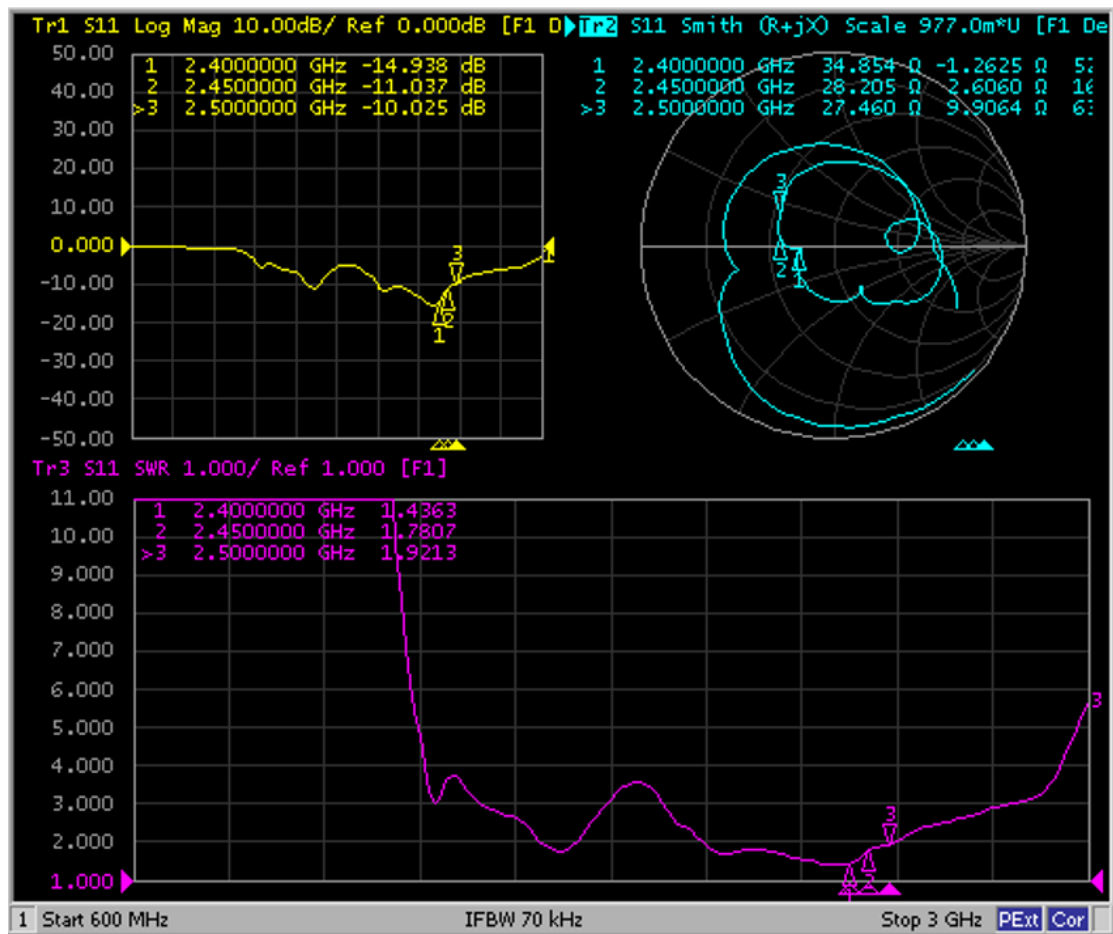


# Antenna Specifications

## 1. Antenna Layout and Dimensional Drawing



## 2. VSWR & Return loss

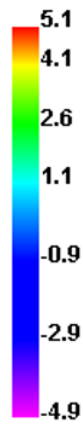
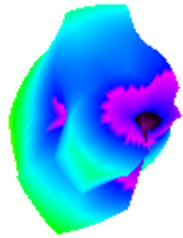


## 3. Antenna gain and efficiency

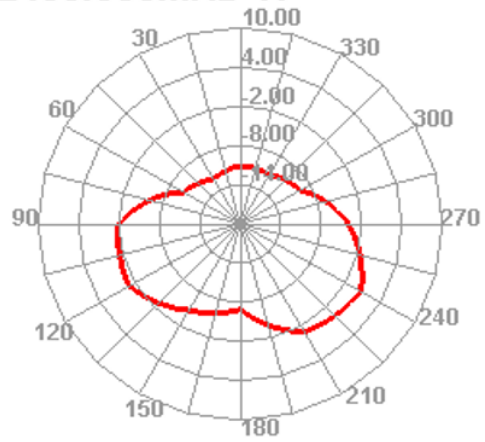
| Passive Test For 0J2450 |          |            |
|-------------------------|----------|------------|
| Freq (MHz)              | Effi (%) | Gain (dBi) |
| 2400                    | 48.89    | 5.09       |
| 2410                    | 48.44    | 5.11       |
| 2420                    | 49.29    | 5.31       |
| 2430                    | 47.63    | 5.43       |
| 2440                    | 49.9     | 5.43       |
| 2450                    | 49.66    | 5.64       |
| 2460                    | 50.78    | 5.51       |
| 2470                    | 47.95    | 5.41       |
| 2480                    | 49.5     | 5.09       |
| 2490                    | 48.82    | 4.9        |
| 2500                    | 48.46    | 4.45       |

4. 2D&3D Field simulation diagram

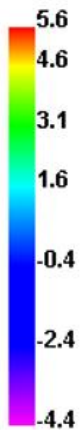
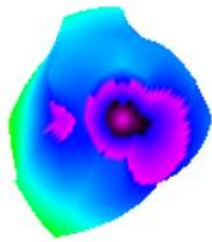
2400.000MHz



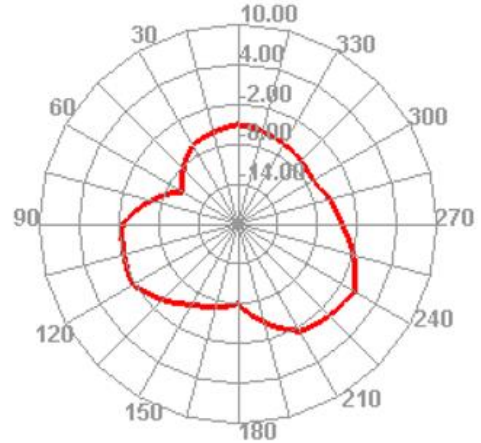
2400.000MHz H



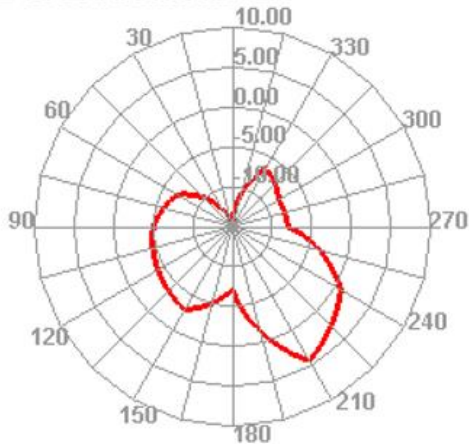
2450.000MHz



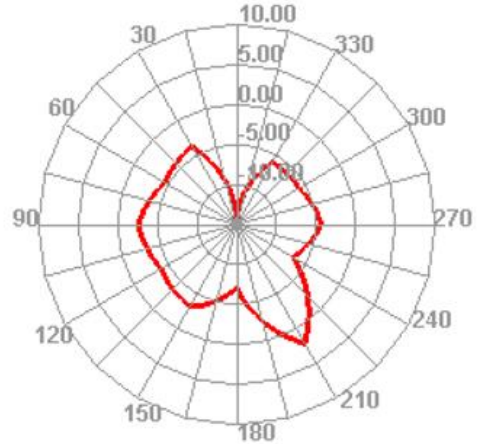
2450.000MHz H



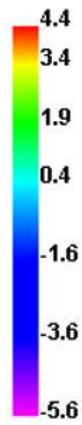
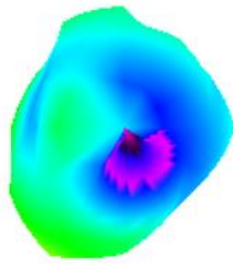
2450.000MHz E1



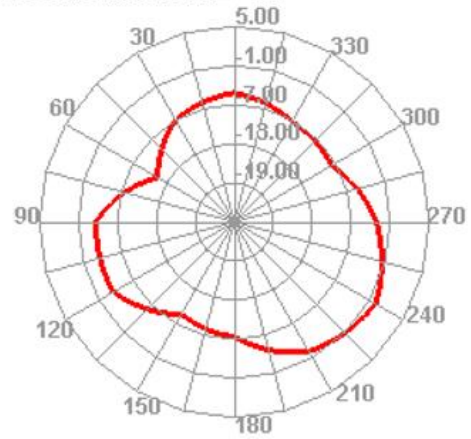
2450.000MHz E2



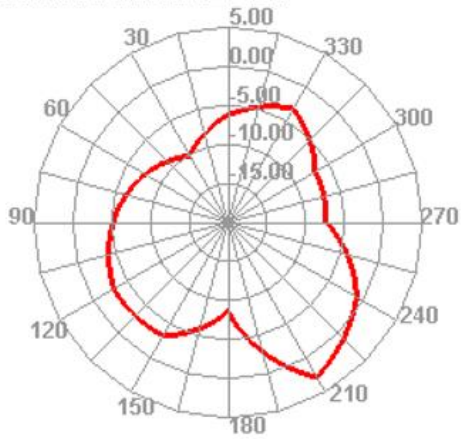
2500.000MHz



2500.000MHz H



2500.000MHz E1



2500.000MHz E2

