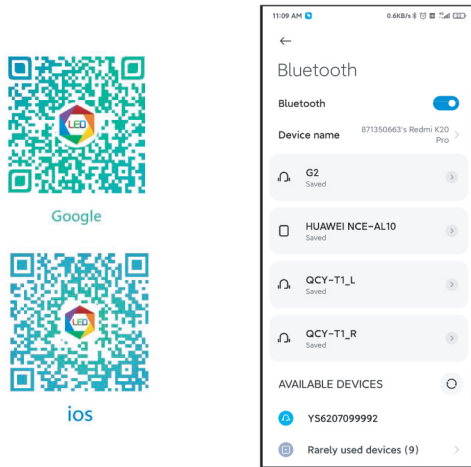


Bluetooth version operation process

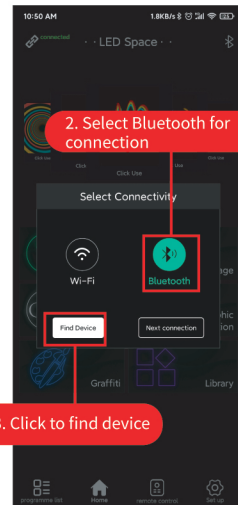
Part 1: Download the "LED Space" APP

1. Scan the QR code or search and download the LED space APP in Google Play or App Store.
2. Plug in the product to power on, and turn on the phone's Bluetooth

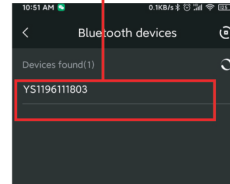


Part 2: Connect the phone to the device

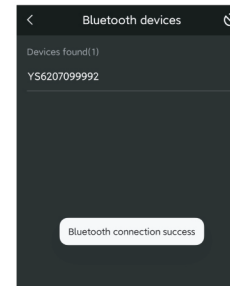
1. Keep the phone's Bluetooth on and start the LED space



4. Tap your device number to connect

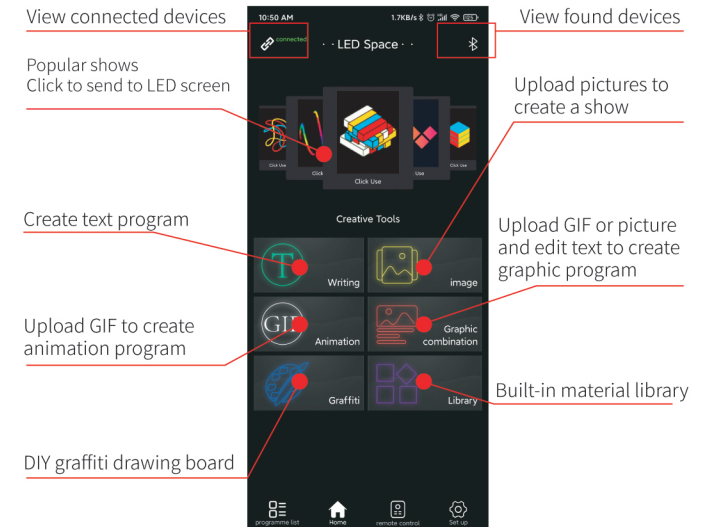


5. The connection is successful



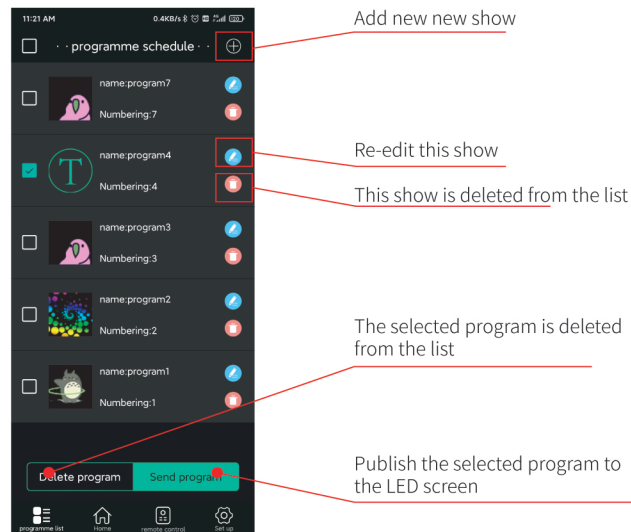
Part 3: Function Introduction

1. Home

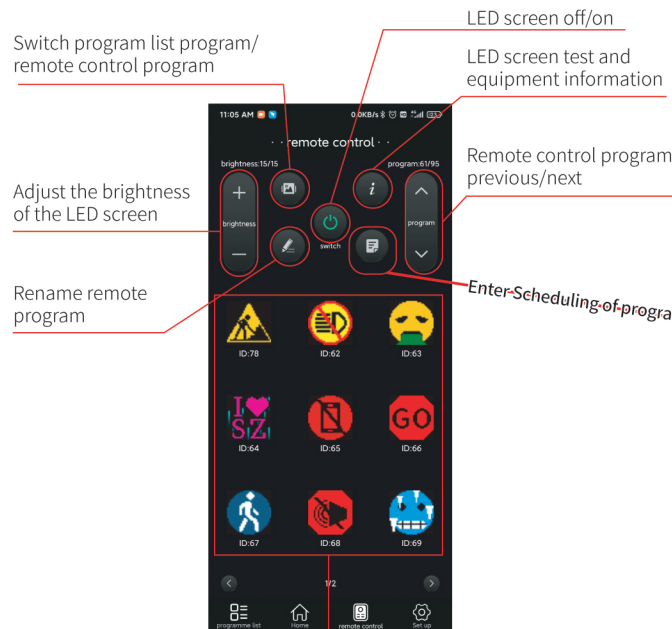


2. programme schedule

In addition to remote control programs, published and saved programs will exist in the program list

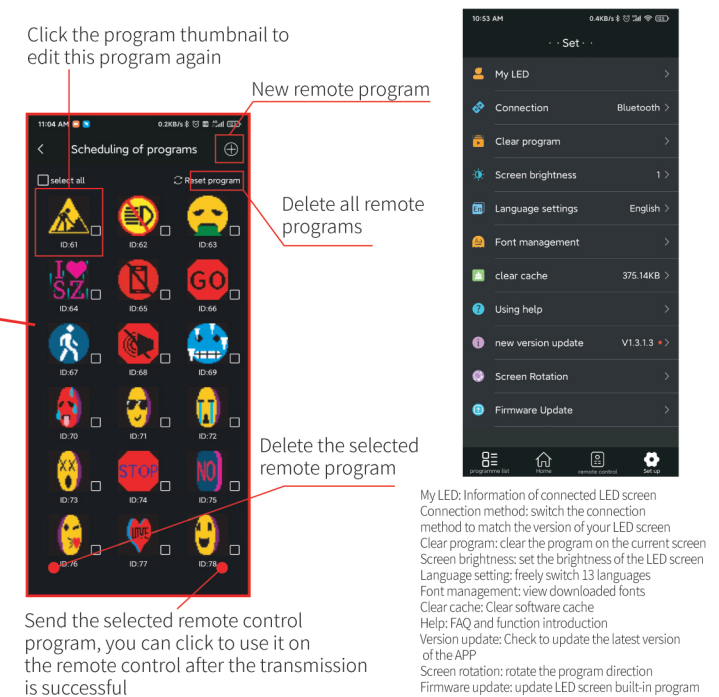


3. remote control



Remote control program Click to send to LED screen

4. Set



FCC Statement

This equipment has been tested and found to comply with the limits for a Class B digital device, pursuant to Part 15 of the FCC Rules. These limits are designed to provide reasonable protection against harmful interference in a residential installation. This equipment generates uses and can radiate radio frequency energy and, if not installed and used in accordance with the instructions, may cause harmful interference to radio communications. However, there is no guarantee that interference will not occur in a particular installation. If this equipment does cause harmful interference to radio or television reception, which can be determined by turning the equipment off and on, the user is encouraged to try to correct the interference by one or more of the following measures:

- Reorient or relocate the receiving antenna.
- Increase the separation between the equipment and receiver.
- Connect the equipment into an outlet on a circuit different from that to which the receiver is connected.
- Consult the dealer or an experienced radio/TV technician for help.

This device complies with part 15 of the FCC Rules. Operation is subject to the following two conditions:(1) This device may not cause harmful interference, and (2) this device must accept any interference received, including interference that may cause undesired operation.

Changes or modifications not expressly approved by the party responsible for compliance could void the user's authority to operate the equipment.