

AH-HUB3 Internal Photos

20.09.22

Model: AH-HUB3

Manufacturing Part Number: SMR19002_SMRHUB_X2

Name: *SmartRent Hub*, marked as *Alloy SmarthHome Hub*

Configuration: Baseline

Orientation note: The hub is installed by mounting to a wall in the home with a subscription service. The term “front” is the view facing a person in front of the wall. The wall power connection is to the “right” side in that view.

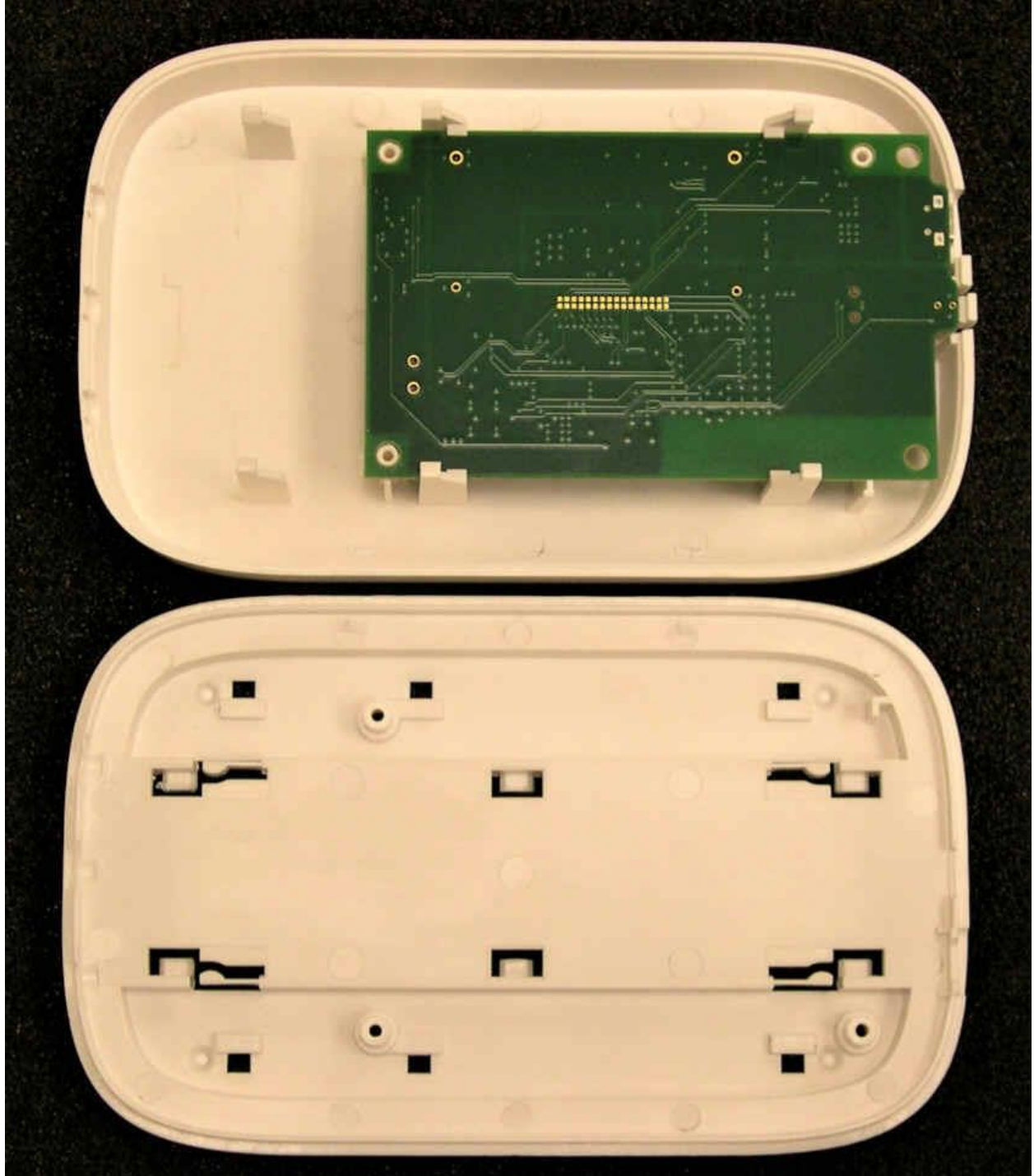
FRONT VIEW

- Includes view port for one user indicator light.
- A typical wall power adapter is also shown.



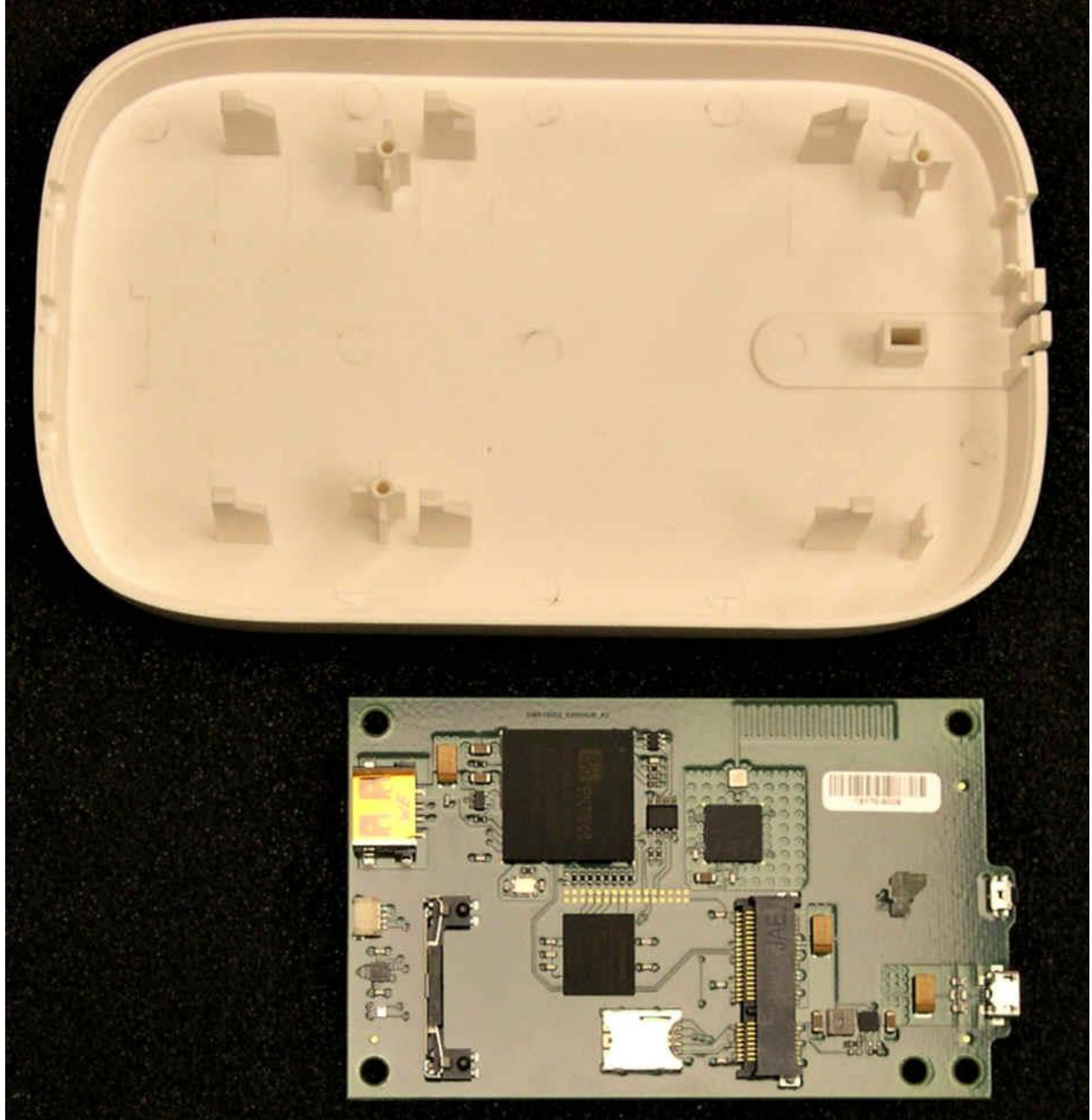
FULL INSIDE VIEW

- Shown clamshell folded open.



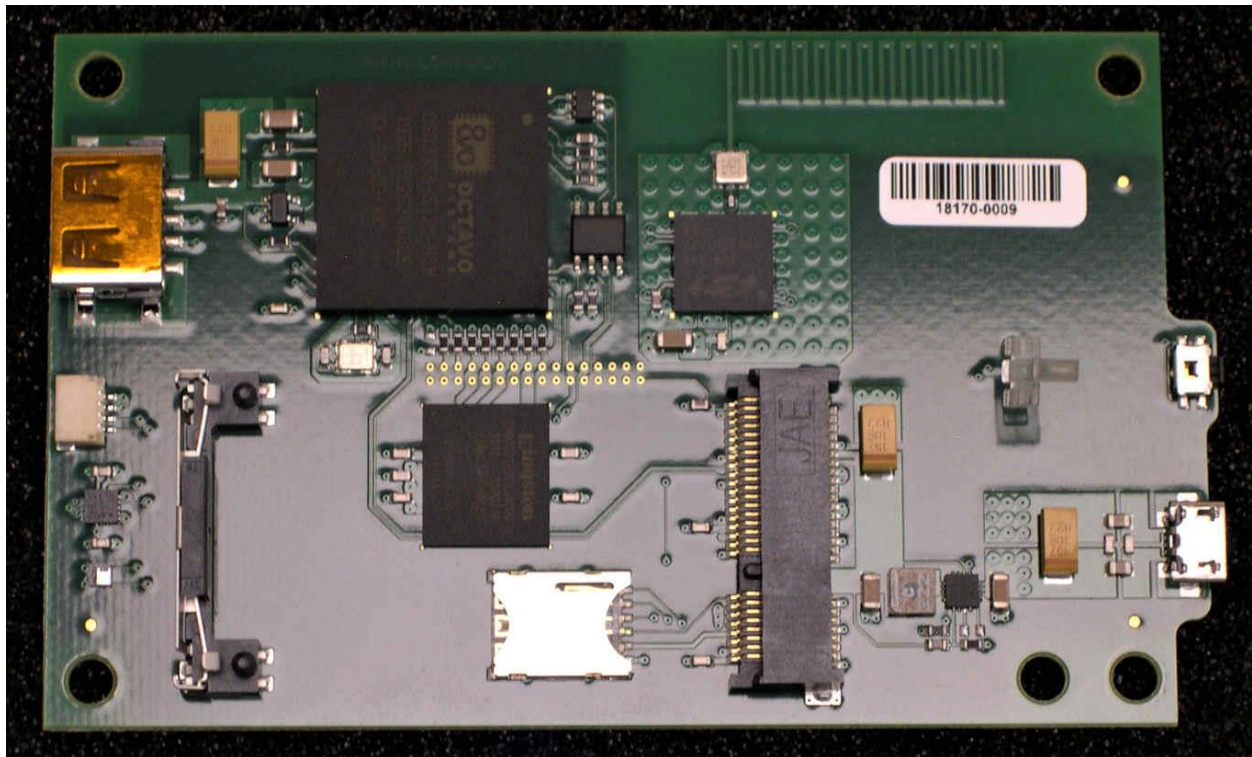
CIRCUIT BOARD MOUNTING VIEW

- Shown with circuit board clamshell board folded out of front enclosure section.



CIRCUIT BOARD (PRINTED WIRING ASSEMBLY) FRONT

- Shows 915MHz printed antenna in upper left, connected to Z-Wave circuits.
- Plastic light pipe over LED is loose fitting.



CIRCUIT BOARD (PRINTED WIRING ASSEMBLY) BACK

- There are no components on the back side and minimal routing and solder joints.
- Printed wiring board employs four (4) layer construction.
- Manufacturing test point connections appear at center.

