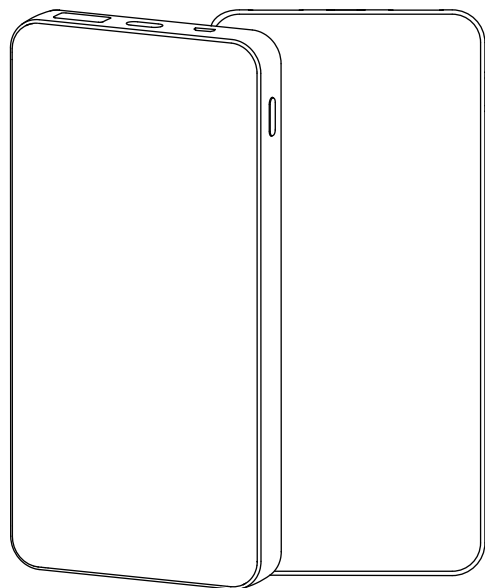


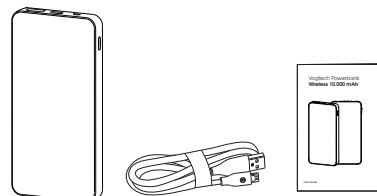
# Wireless Charging PowerBank PB-D100W2



User Guide

Thanks for purchasing Vogtech product, please read this user guide carefully before operation and keep it for future reference.

## 1. Box Contents:

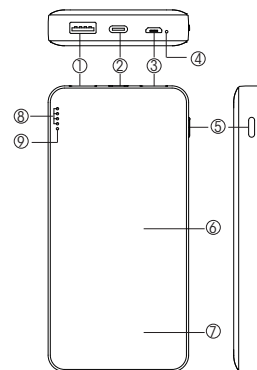


- 1 Powerbank
- 1 USB to Micro USB Cable
- 1 User Guide

## 2. Technical Specifications:

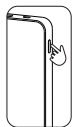
Battery Type:	Lithium Polymer	Output:	USB 4.5V/5A, 5V/3A, 9V/2A, 12V/1.5A
Capacity:	37.0 Wh(3.7V/10.000 mAh)		Type C 5V/3A, 9V/2A, 12V/1.5A
Material:	Plastic		5W
Size:	145.0x70.5.0x17.5 mm	Input:	Type C 5V/3A, 9V/2A
Weight:	236.0 g		Micro USB 5V/2A, 9V/2A

## 3. About the Powerbank:



- (1) USB Output (QC 18W+Huawei 22.5W)
- (2) Type Input&Output (PD 18W)
- (3) Micro USB Input (QC 18W)
- (4) Wireless Charging LED
- (5) Power On/Off
- (6) Wireless Charging 5W
- (7) Lighting Logo
- (8) Capacity LEDs
- (9) Quick Charging LED

## 4. Check Your Powerbank Battery Status from the LED:



Press the Power On/Off Button to check the remaining capacity.

●●● The battery is low, less than 25% remaining. PLEASE recharge.

●●● The battery is medium, approx 50% remaining. Please recharge after several use.

●●● The battery is healthy, approx 75% remaining. You can take it when you are on-the-go!

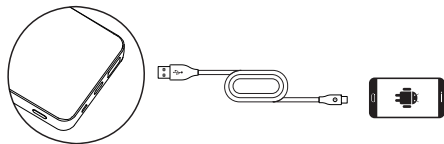
●●● The battery is sufficient, more than 75% remaining. You can take it when you are on-the-go!

## 5. Charge Your Devices:

### 5-1. Charge with a USB Cable.

The powerbank is compatible with all smartphones, tablets and all USB-Powered device with 5V, 9V, 12V input.

To charge your device with powerbank, plug the USB charging cable into the USB output or Type C output, and connect the other end to device.



\* The supplied charging cable supports all smart devices that has a Type C input. For the smart devices that have a different input, please use the cable supplied by its manufacturer.

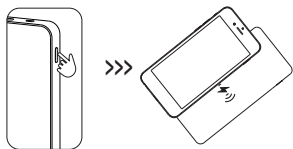
\* The Capacity LED on display will light up and one of LEDs will be blinking during charging.

\* The Powerbank would automatically shut off in a few seconds after finishing charging.

### 5-2. Charge Qi-Enabled Smart phone wirelessly.

Step 1. Press the power button on the left side until you see the wireless charging LED light up in RED.

Step 2. Place down your Qi-Enabled smart phone on the powerbank surface where you can see a wireless charging icon.



\* The LED light will be blue during charging.

\* The LED Light will be red after charging.

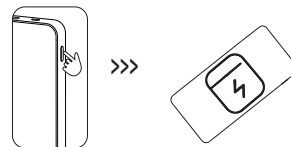
EN

## 5-3. Charge Qi-Enabled Gadgets(TWS, Mouse etc) with Small Wireless Power

EN

Step 1. Press the power button once, and then press it and hold it for 3 seconds again to activate the small power charging mode.

Step 2. Place down your Qi-Enabled gadgets on the powerbank surface where you can see a wireless charging icon.



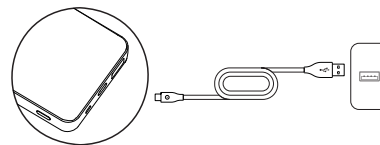
\* The LED light will be blue during charging.

\* The LED Light will be red after charging.

## 6. Charge the Powerbank:

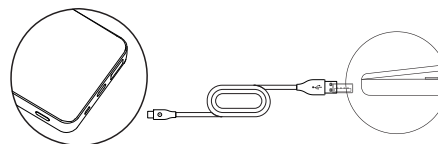
We suggest that you fully charge the powerbank before each use. To Charge your powerbank, use one of the following 2 charging options:

### 6-1. Charge with a Power Adapter with USB port.



Connect the powerbank to power adapter USB port with the supplied USB to Type C Cable directly.  
or with your own USB to Micro USB cable.

### 6-2. Charge with a free USB port on your PC.



Connect the powerbank to a free USB port on your PC with the supplied USB to Type C Cable directly.  
or with your own USB to Micro USB cable.

## IMPORTANT DISPOSAL:



This electrical appliance does not belong in the household waste. For proper disposal, please contact the public collection in your community.



ID:2ANM9-P8-D100W2

This device complies with part 15 of the FCC Rules. Operation is subject to the following two conditions: (1) this device may not cause harmful interference, and (2) this device must accept any interference received, including interference that may cause undesired operation.

Any changes or modifications not expressly approved by the party responsible for compliance could void the user's authority to operate the equipment.

**NOTE:** This equipment has been tested and found to comply with the limits for a Class B digital device, pursuant to Part 15 of the FCC Rules. These limits are designed to provide reasonable protection against harmful interference in a residential installation. This equipment generates, uses and can radiate radio frequency energy and, if not installed and used in accordance with the instructions, may cause harmful interference to radio or television reception, which can be determined by turning the equipment off and on, the user is encouraged to try to correct the interference by one or more of the following measures:

- Reorient or relocate the receiving antenna.
- Increase the equipment into an outlet on a circuit different from that to which the receiver is connected.
- Consult the dealer or an experienced radio/TV technician for help.

#### FCC Radiation Exposure Statement

This equipment complies with FCC radiation exposure limits set forth for an uncontrolled environment. This equipment should be installed and operated with a minimum distance of 20 cm between the radiator and your body

Warning: Changes or modifications to this unit not expressly approved by the party responsible for compliance could void the user's authority to operate the equipment.

EN