

AC INFINITY

CLOUDCOM
THERMO-HYGROMETER

USER MANUAL

WELCOME

Thank you for choosing AC Infinity. We are committed to product quality and friendly customer service. If you have any questions or suggestions, please don't hesitate to [contact](#) us.

Visit www.acinfinity.com and click contact for our contact information.

EMAIL

support@acinfinity.com

WEB

www.acinfinity.com

LOCATION

Los Angeles, CA

MANUAL CODE CC2205X1

| PRODUCT | MODEL | UPC-A |
|----------------|--------------|--------------|
| CLOUDCOM A1 | AC-CCA1 | 819137022355 |
| CLOUDCOM A2 | AC-CCA2 | 819137022362 |
| CLOUDCOM B1 | AC-CCB1 | 819137022379 |
| CLOUDCOM B2 | AC-CCB2 | 819137022386 |

MANUAL INDEX

| | |
|---|---------|
| Manual Index | Page 5 |
| Product Warning | Page 6 |
| Interference from MH and HPS Lights | Page 7 |
| Key Features | Page 8 |
| Product Contents | Page 10 |
| Installation | Page 12 |
| Programming | Page 19 |
| Download the App | Page 21 |
| Add a Device | Page 23 |
| Other AC Infinity Products | Page 28 |
| Warranty | Page 29 |

PRODUCT WARNING



TO REDUCE THE RISK OF FIRE, ELECTRIC SHOCK, OR INJURY TO PERSONS, OBSERVE THE FOLLOWING:

1. Read all instructions before installing and using this product.
2. If you are unfamiliar or have doubts about performing this product's installation, seek the services of a qualified, trained, and licensed professional. Inappropriate installation will void this product's warranty.
3. Do not operate this product while its cord is damaged, or if it malfunctions, has been dropped, or is damaged in any manner.

INTERFERENCE from MH and HPS LIGHTS

Certain grow light models with HID* ballasts that do not use electromagnetic shielding will create an area of radio frequency interference (RFI). This can distort nearby frequency-sensitive components like internet lines and climate sensors. RFI can be emitted from the ballast's cords or the ballast itself.

Follow these steps to ensure proper functionality and to prevent radio frequency interference from affecting your sensor probe:

TIP 1

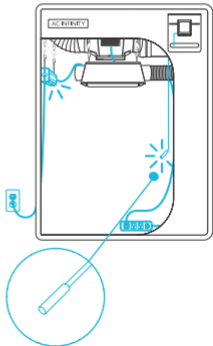
Keep the probe cord far away from your ballast's cords to ensure the controller properly detects climate conditions.

You may also wrap the probe cord and create a cone around the sensor head with aluminum foil tape.

TIP 2

Do NOT plug your grow light and inline fan into the same duplex outlet. Plug your grow light and inline fan into separate power strips and electrical sockets.

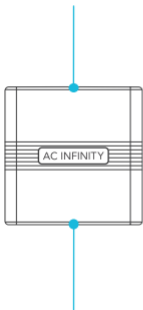
*MH, HPS, CMH, or CHPS



KEY FEATURES

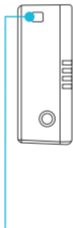
THERMO-HYGROMETER

Detects current temperature and humidity and programs alarms when used with the AC Infinity app.



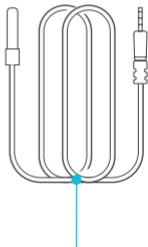
VERSATILE

Compact design fits in any setting.



STRAP HOLE

Allows for mobility and hanging.



SENSOR PROBE

Provides precise climate readings.

Note: External sensor probe included with AC-CCA1 only.

KEY FEATURES

THERMO-HYGROMETER

Displays and detects current temperature and humidity. Programs alarms when used with the AC Infinity app.



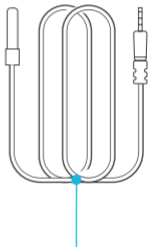
BACKLIGHT

Improves visibility in darker settings.



KICKSTAND

Keeps your hygrometer upright.



SENSOR PROBE

Provides precise climate readings.

Note: External sensor probe included with AC-CCB1 only.

PRODUCT CONTENTS

Included in AC-CCA1



SMART
HYGROMETER
(x1)



CR2477 3V
BATTERY
(x1)



SENSOR
PROBE
(x1)



WIRE
TIES
(x1)

Included in AC-CCA2



SMART
HYGROMETER
(x1)



CR2477 3V
BATTERY
(x1)

PRODUCT CONTENTS

Included in AC-CCB1



SMART
HYGROMETER
(x1)

AAA
BATTERIES
(x2)

SENSOR
PROBE
(x1)

WIRE
TIES
(x1)

MOUNT-
ING SET
(x1)

Included in AC-CCB2



SMART
HYGROMETER
(x1)

AAA
BATTERIES
(x2)

MOUNTING
SET
(x1)

INSTALLATION

CLOUDCOM A1/B1

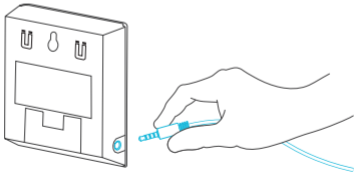
STEP 1

Plug the sensor probe into the hygrometer's 3.5mm jack.

Skip steps 1 and 2 if your model does not have a probe jack.



CLOUDCOM A1



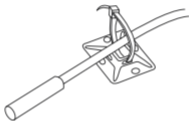
CLOUDCOM B1

INSTALLATION

CLOUDCOM A1/B1

STEP 2

Position the corded sensor probe and secure it by using the included zip tie and tie mount.

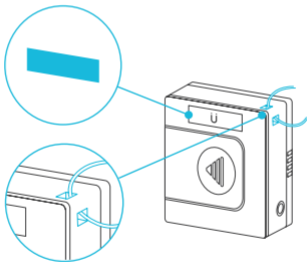


INSTALLATION

CLOUDCOM A1/A2

MAGNET MOUNTING

Use the magnets on the back of your hygrometer to mount it onto a magnetic surface. You may also thread a strap through the corner hole to hang your hygrometer.



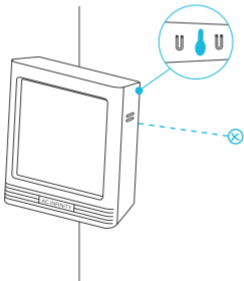
For temperature and humidity display and alarm programming, see page 21 to download the app.

INSTALLATION

CLOUDCOM B1/B2

WALL MOUNTING

Apply a screw set onto a spot on your wall to wall mount your hygrometer.

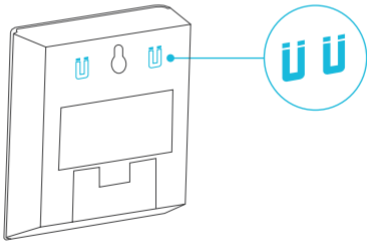


INSTALLATION

CLOUDCOM B1/B2

MAGNET MOUNTING

Use the magnets on the back of your hygrometer to mount it onto a magnetic surface.



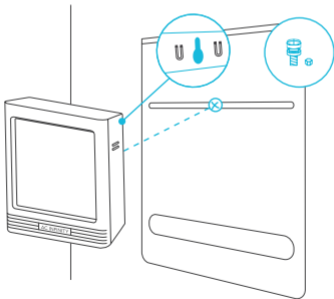
INSTALLATION

CLOUDCOM B1/B2

PLATE MOUNTING*

Screw the bolts into the slit at the upper half of the plate.

Hang the hygrometer by the bolts using the holes on the backside.



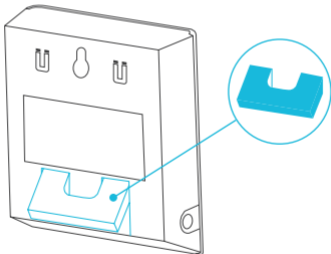
*Controller plate not included

INSTALLATION

CLOUDCOM B1/B2

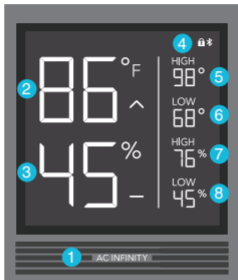
KICKSTANDING

Open the stand behind the hygrometer to set it tilted on your desktop.



PROGRAMMING

CLOUDCOM B1/B2



1. LOGO BUTTON

Toggles the backlight between on and off when tapped, and switches the temperature scale between Fahrenheit and Celsius when held for 5 seconds.

Hold the logo button for 10 seconds until the alarm icon disappears to stop the alarm beeping.

2. PROBE TEMPERATURE

Displays the current temperature that the probe is detecting. Shows "--" if no probe is plugged in (AC-CCB1 only). Trend indicator signals a rise, steady, or fall in temperature within the last hour.

3. PROBE HUMIDITY

Displays the current humidity that the probe is measuring. Shows "--" if no probe is plugged in (AC-CCB1 only). Trend indicator signals a rise, steady, or fall in humidity within the last hour.

4. STATUS ICONS

Flashes or displays the alert icons from the controller. Icons include Alarm and Bluetooth.

5. HIGH TEMPERATURE

Displays the current highest temperature reading.

6. LOW TEMPERATURE

Displays the current lowest temperature reading.

7. HIGH HUMIDITY

Displays the current highest humidity reading.

8. LOW HUMIDITY

Displays the current lowest humidity reading.

DOWNLOAD THE APP

THE AC INFINITY APP

The AC Infinity app enables you to connect with this intelligent hygrometer, giving you access to advance programs and environmental data.

1

Download the AC Infinity app from the App Store or Play Store by searching “AC Infinity”.



2

Open the AC Infinity app and follow the instructions on page 22-27 to pair your hygrometer with the app.



When pairing the app around multiple hygrometers, move your mobile device closer to your desired hygrometer.

DOWNLOAD THE APP

QUICK TIP FOR EASY ACCESS

Open your smart phone camera and scan the QR code below to visit our website www.acinfinity.com for more information on the AC Infinity app.

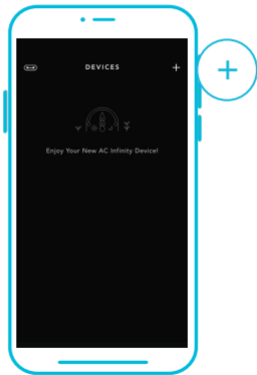


The AC Infinity app's appearance and features are subject to change.
Refer to our website for the latest instructions.

ADD A DEVICE

1

Tap on the “+” tab to add your smart device.

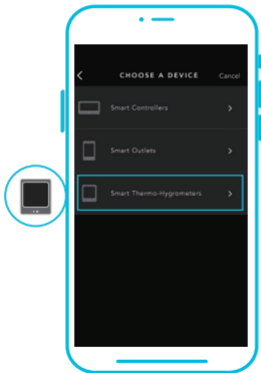


Note: Enable Bluetooth before starting the pairing process.

ADD A DEVICE

2

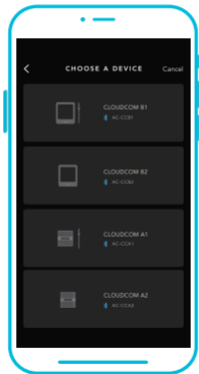
To launch the app, tap on the “Smart Thermo-Hygrometers” tab to begin pairing.



ADD A DEVICE

3

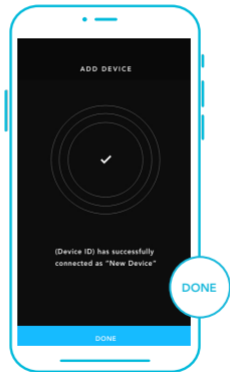
Select your hygrometer to begin pairing.



ADD A DEVICE

4

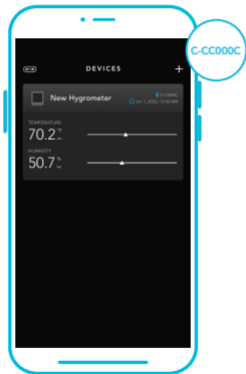
Tap DONE button to complete the pairing process.



ADD A DEVICE

5

Your hygrometer will appear in your smart device with a unique ID.



AC INFINITY PRODUCTS

Seedling Mats

The SUNCORE series is a line of seedling mat designed to improve germination success and accelerate your seeds' growth process by emitting steady heat. Each mat is lined with an innovative far-infrared film that provides even heating distribution.



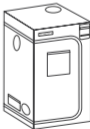
Inline Duct Fans

The CLOUDLINE series is a line of duct fans designed to quietly ventilate AV rooms and closets, as well as various DIY air circulation and exhaust projects. Features a thermal controller with intelligent programming that will automatically adjust duct fan speeds in response to changing temperatures.



Advance Grow Tents

The CLOUDLAB series is a line of grow tents designed to create ideal growing conditions and facilitate indoor plant cultivation year-round. Features 2000D thick oxford canvas lined with inner diamond patterned mylar that maximizes grow light luminosity, and a reinforced frame with 150 lb. weight capacity. Includes a mounting plate to install your AC Infinity controller onto.



Discover the latest innovations in environmental controls at acinfinity.com

WARRANTY

This warranty program is our commitment to you, the product sold by AC Infinity will be free from defects in manufacturing for a period of two years from the date of purchase. If a product is found to have a defect in material or workmanship, we will take the appropriate actions defined in this warranty to resolve any issues.

The warranty program applies to any order, purchase, receipt, or use of any products sold by AC Infinity or our authorized dealerships. The program covers products that have become defective, malfunctioned, or expressively if the product becomes unusable. The warranty program goes into effect on the date of purchase. The program will expire two years from the date of purchase. If your product becomes defective during that period, AC Infinity will replace your product with a new one or issue you a full refund.

The warranty program does not cover abuse or misuse. This includes physical damage, submersion of the product in water, incorrect installation such as wrong voltage input, and misuse for any reason other than intended purposes. AC Infinity is not responsible for consequential loss or incidental damages of any nature caused by the product. We will not warrant damage from normal wear such as scratches and dings.

Contact our dealers department at dealers@acinfinity.com or (626) 838-4656 for more information about our dealers and distributors program. Contact our customer service department at support@acinfinity.com or 626-923-6399 for product and warranty assistance. Our business hours are Monday through Friday, 9:00 am to 5:00 pm PST.



If you have any issues with this product, contact us and we'll happily resolve your problem or issue a full refund!

FCC Statement

This device complies with part 15 of the FCC rules. Operation is subject to the following two conditions: (1) this device may not cause harmful interference, and (2) this device must accept any interference received, including interference that may cause undesired operation. Changes or modifications not expressly approved by the party responsible for compliance could void the user's authority to operate the equipment.

NOTE: This equipment has been tested and found to comply with the limits for a Class B digital device, pursuant to part 15 of the FCC Rules. These limits are designed to provide reasonable protection against harmful interference in a residential installation. This equipment generates uses and can radiate radio frequency energy and, if not installed and used in accordance with the instructions, may cause harmful interference to radio communications. However, there is no guarantee that interference will not occur in a particular installation. If this equipment does cause harmful interference to radio or television reception, which can be determined by turning the equipment off and on, the user is encouraged to try to correct the interference by one or more of the following measures:

- Reorient or relocate the receiving antenna.
- Increase the separation between the equipment and receiver.
- Connect the equipment into an outlet on a circuit different from that to which the receiver is connected.
- Consult the dealer or an experienced radio/TV technician for help.

The device has been evaluated to meet general RF exposure requirement. The device can be used in portable exposure condition without restriction.

COPYRIGHT © 2022 AC INFINITY INC. ALL RIGHTS RESERVED

No part of the materials including graphics or logos available in this booklet may be copied, photocopied, reproduced, translated or reduced to any electronic medium or machine readable form, in whole or in part, without specific permission from AC Infinity Inc.

www.acinfinity.com