

POWERING AND SETUP



CONTROLLER AI+
(x1)



SENSOR
PROBE
(x1)



POWER
ADAPTER
(x1)



CONTROLLER
PLATE BOLTS
(x2)



WOOD
SCREWS
(x2)



WIRE
TIE
(x1)



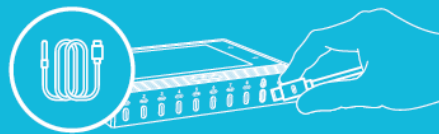
CABLE
DOCK
(x1)



HOOK AND
LOOP TIES
(x2)

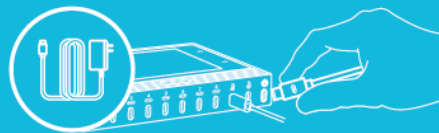
STEP 1

Plug the sensor probe into the controller's sensor port. Set the probe near your plants in your grow tent for the most accurate reading.



STEP 2

Plug your the power adapter's UIS connector into the controller's power port. Plug the two-prong connector to an AC power outlet to power the controller.



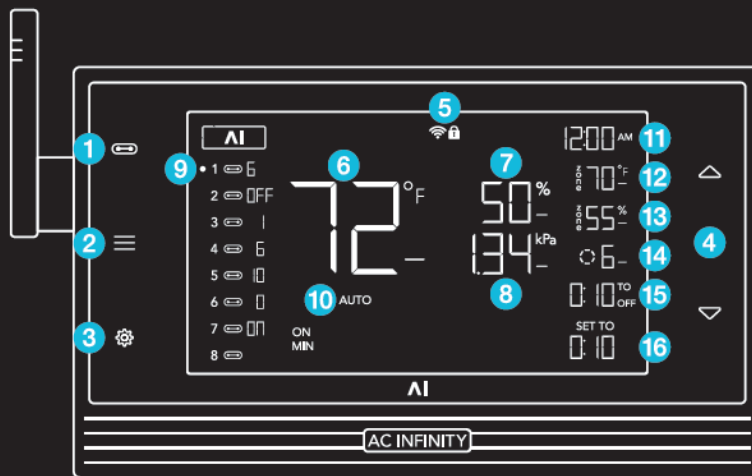
STEP 3

Plug your device's UIS connector into one of the controller's ports. Plug the device's power cord into an AC power outlet to power it.



To avoid overcharging, DO NOT plug your device into the controller's power port.

OVERVIEW



1. PORT BUTTON

Cycles through all connected devices.

2. MODE BUTTON

Cycles through the controller's programming modes.

3. SETTING BUTTON

Cycles through the controller settings.

4. UP/DOWN BUTTONS

Adjusts the parameters of the mode or setting you are in.

5. ALERT ICONS

Displays alerts and statuses.

6. PROBE TEMP.

Displays the temperature.

7. PROBE HUMIDITY

Displays the humidity.

8. PROBE VPD

Displays the VPD.

9. PORTS

Displays devices' levels.

10. MODE

Displays the mode.

11. CURRENT TIME

Displays the time.

12. ZONE TEMP.

Displays the zone temperature.

13. ZONE HUMIDITY

Displays the zone humidity.

14. CURRENT LEVEL

Displays the devices' setting.

15. COUNTDOWN

Displays the countdown.

16. USER SETTING

Displays the value of your mode.

DOWNLOAD THE APP

THE AC INFINITY APP

The AC Infinity app enables you to connect with the next generation of our intelligent controllers, giving you access to advance programs and environmental data*.

1

Download the AC Infinity app from the App Store or Play Store by searching "AC Infinity".



2

Open the AC Infinity app and follow the instructions on page 46-52 to pair your controller with the app.



HOW TO USE THE APP

Visit our website at www.acinfinity.com or open your smartphone camera and scan the QR code below for more information on the AC Infinity app.



ADD A DEVICE

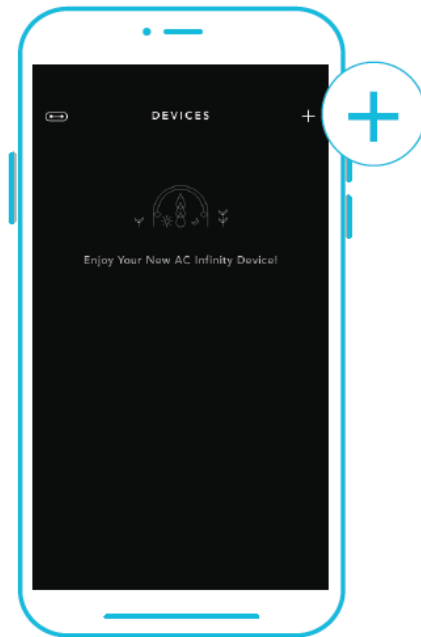
BLUETOOTH

SETUP AND PAIRING

Power your device on before pairing your controller with the app. Logging in or creating an account beforehand will expedite the pairing process. Have your Wi-Fi network's name and password ready.

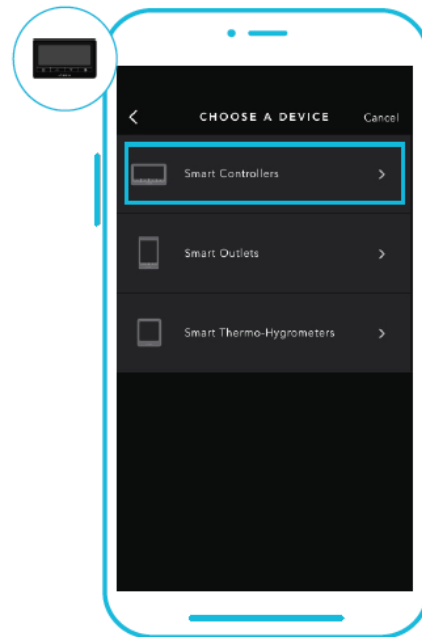
1

Tap on the "+" tab to add your smart device.



2

Select "Smart Controllers".



Wi-Fi and location permissions must be enabled on your mobile device before starting the pairing process.

ADD A DEVICE

BLUETOOTH

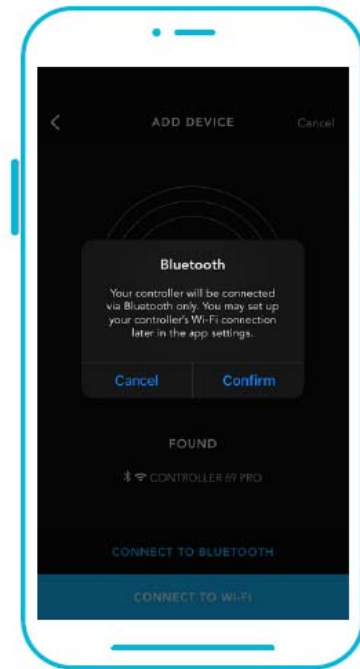
5

Connect using Bluetooth. To connect using Wi-Fi, skip to step 8.



6

Connecting with Bluetooth will disable Wi-Fi functionality. Go to the app settings page to re-enable and connect using Wi-Fi.



When pairing the app around multiple controllers, move your mobile device closer to your desired controller.

ADD A DEVICE

BLUETOOTH

7

Tap the DONE button to complete the pairing process.



ADD A DEVICE

WI-FI

8

Repeat steps 1-5. Log in or create an account to continue.



9

Enter your Wi-Fi network's password. You may also connect to an alternate 2.4 GHz router*.



ADD A DEVICE

WI-FI

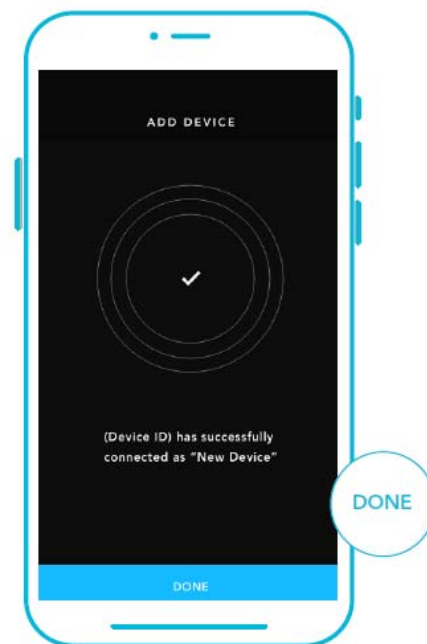
10

Follow these tips if the pairing process is unsuccessful.



11

Tap the DONE button to complete the pairing process.



*This controller is only compatible with 2.4 GHz frequency band routers. When connecting using Wi-Fi, make sure your mobile device is not connected to a 5 GHz frequency band network.

ADD A DEVICE

WI-FI

12

Your controller will appear in your smart device with a unique ID.



Warning:

This device complies with Part 15 of the FCC Rules. Operation is subject to the following two conditions:

(1) this device may not cause harmful interference, and (2) this device must accept any interference received, including interference that may cause undesired operation.

Changes or modifications not expressly approved by the party responsible for compliance could void the user's authority to operate the equipment.

NOTE: This equipment has been tested and found to comply with the limits for a Class B digital device, pursuant to Part 15 of the FCC Rules. These limits are designed to provide reasonable protection against harmful interference in a residential installation. This equipment generates uses and can radiate radio frequency energy and, if not installed and used in accordance with the instructions, may cause harmful interference to radio communications. However, there is no guarantee that interference will not occur in a particular installation. If this equipment does cause harmful interference to radio or television reception, which can be determined by turning the equipment off and on, the user is encouraged to try to correct the interference by one or more of the following measures:

--Reorient or relocate the receiving antenna.

--Increase the separation between the equipment and receiver.

--Connect the equipment into an outlet on a circuit different.

from that to which the receiver is connected.

--Consult the dealer or an experienced radio/TV technician for help.

NOTE: This device and its antenna(s) must not be co-located or operation in conjunction with any other antenna or transmitter

RF Exposure Statement

To maintain compliance with FCC's RF Exposure guidelines, This equipment should be installed and operated with minimum distance of 20cm the radiator your body. This device and its antenna(s) must not be co-located or operation in conjunction with any other antenna or transmitter

ISED Canada Statement:

This device contains licence-exempt trasnsmitter(s)/receiver(s) that comply with Innovation, Science and Economic Development

Canada 's licence-exempt RSS(s). Operation is subject to the following two conditions:

1) this device may not cause interference and

2) this device must accept any interference, including interference that may cause undesired operation of the device.

Radiation Exposure: This equipment complies with Canada radiation exposure limits set forth for an uncontrolled environment

RF Exposure Statement

To maintain compliance with IC's RF Exposure guidelincs, This cquipment should be installed and operated with minimum distance of 20cm the radiator your body. This device and its antenna(s) must not be co-located or operation in conjunction with any other antenna or transmitter

Déclaration du Canada:

Ce dispositif contient des transmetteurs/récepteurs transmitters exemptés de licence qui sont conformes à l'innovation, à la Science et au développement économique

Les flux RSS du Canada exempts de licences. L'exploitation est soumise aux deux conditions suivantes:

- 1) cet appareil ne doit pas causer d'interférences et
- 2) ce dispositif doit accepter toute interférence, y compris toute interférence pouvant entraîner un fonctionnement indésirable du dispositif.

Exposition au rayonnement: cet équipement est conforme aux limites d'exposition au rayonnement établies par le Canada pour un environnement non contrôlé
noncé d'exposition RF

Pour maintenir le respect des guides d'exposition RF d'IC, l'équipement doit être installé et actionné avec une distance minimale de 20cm du radiateur de votre corps. Cet appareil et ses antennes ne doivent pas être co-localisés ou en opération en conjonction avec toute autre antenne ou émetteur