

MANUAL CODE AT2306X1

PRODUCT	MODEL	UPC-A
AIRTITAN S3	AC-ATS3	819137023727
AIRTITAN S7	AC-ATS7	819137023734
AIRTITAN T3	AC-ATT3	819137020467
AIRTITAN T7	AC-ATT7	819137020474
AIRTITAN T8	AC-ATT8	819137020481
AIRTITAN T8-N	AC-ATT8-N	819137020498

PRODUCT WARNING



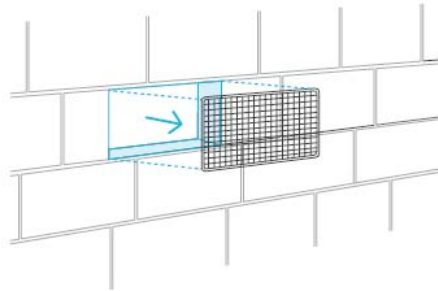
TO REDUCE THE RISK OF FIRE, ELECTRIC SHOCK, OR INJURY TO PERSONS,
OBSERVE THE FOLLOWING:

1. Ensure your power source conforms to the electrical requirements of this product.
2. Check your local code restrictions for additional safety measures that may be needed for a proper code compliant installation.
3. Read all instructions before installing and using this product.
4. If you are unfamiliar or have doubts about performing this product's installation, seek the services of a qualified, trained, and licensed professional. Inappropriate installation will void this product's warranty.
5. Do not attempt to hardwire this product. Performing any retrofitting actions may result in personal injury and/or electrical damage, and will void this product's warranty.
6. This product must not be used in potentially hazardous locations such as flammable, explosive, chemical-laden, or wet atmospheres.
7. Ducted products must always be vented to outdoor areas.
8. Do not cover power cords with rugs or other fabric materials.
9. This product has rotating parts. Safety precautions should be exercised during the installation, operation, and maintenance of this product.
10. Do not insert or allow fingers or foreign objects to enter any ventilation or exhaust openings as it may cause electric shock, fire, or damage to this product. Do not block or tamper with this product in any manner while it is in operation.
11. Do not depend on the on/off programming as the sole means of shutting power from this product. Unplug the power cord before installing, servicing, or moving this product.
12. Do not operate this product while its cord is damaged, or if it malfunctions, has been dropped, or is damaged in any manner.

FAN MOUNTING

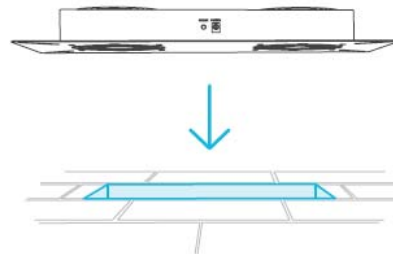
STEP 1

Remove any existing grilles, vents, or covers on ventilation opening where you wish to install the fan unit.



STEP 2

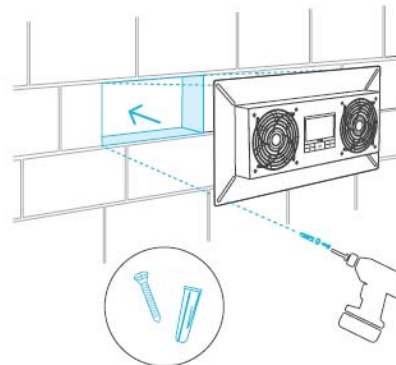
Position the fan unit over the ventilation opening. Depending on the model, the unit may be facing towards or away from the wall. Please be sure to check the airflow direction prior to installation.



FAN MOUNTING

STEP 3 (Foundation Block Mounting)

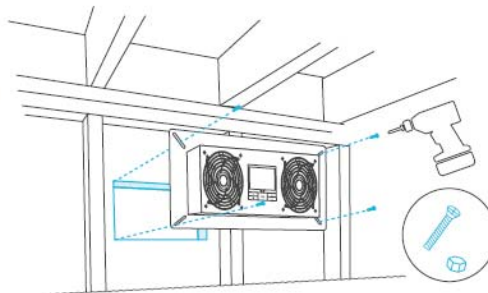
To install the unit onto a foundation brick or block, mark the mounting hole locations using the four corners of the metal face plate. Then drill 5/16" holes with a drill bit. Install wall anchors into openings and secure the unit into the wall with four screws.



AIRTITAN T8/T8N Illustration shown above.

STEP 3 (Wall and Surface Mounting)

Secure the mounting frame onto the surface with the included wood screws. If using a machine screw with nuts, you may need to drill a hole.



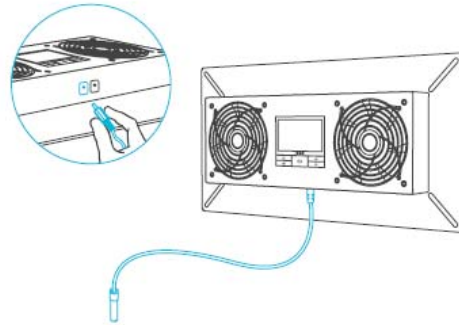
AIRTITAN T8/T8N Illustration shown above.

POWERING AND SETUP

AIRTITAN T8/T8-N

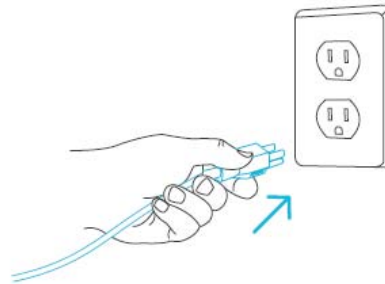
STEP 1

To set up temperature monitoring, plug the male connector of the thermal probe into the designated probe port located at the bottom side of the fan unit.



STEP 2

Plug the fan's power cord into an AC power outlet to power it.



DOWNLOAD THE APP

THE AC INFINITY APP

The AC Infinity app enables you to connect with the next generation of our intelligent controllers, giving you access to advance programs and environmental data*.

1

Download the AC Infinity app from the App Store or Play Store by searching "AC Infinity".



2

Open the AC Infinity app and follow the instructions on page 54-60 to pair your controller with the app.



HOW TO USE THE APP

Visit our website at www.acinfinity.com or open your smartphone camera and scan the QR code below for more information on the AC Infinity app.



*Appearance and features subject to change.

ADD A DEVICE

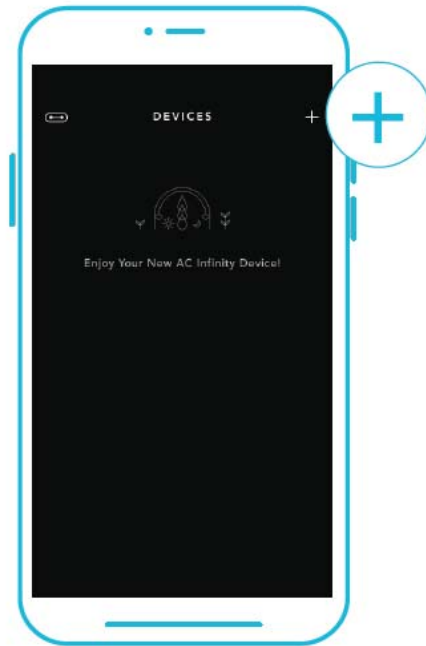
BLUETOOTH

SETUP AND PAIRING

Power your device on before pairing your controller with the app. Logging in or creating an account beforehand will expedite the pairing process. Have your Wi-Fi network's name and password ready.

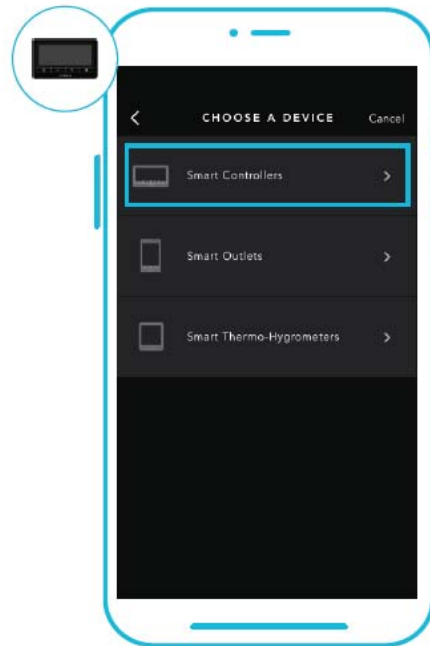
1

Tap on the "+" tab to add your smart device.



2

Select "Smart Controllers".



Wi-Fi and location permissions must be enabled on your mobile device before starting the pairing process.

ADD A DEVICE

BLUETOOTH

3

Select CONTROLLER 69 PRO.



4

Hold the port button for 5 seconds to activate Bluetooth. Wait for the Bluetooth icon to start flashing on your controller's screen to release the button.



ADD A DEVICE

BLUETOOTH

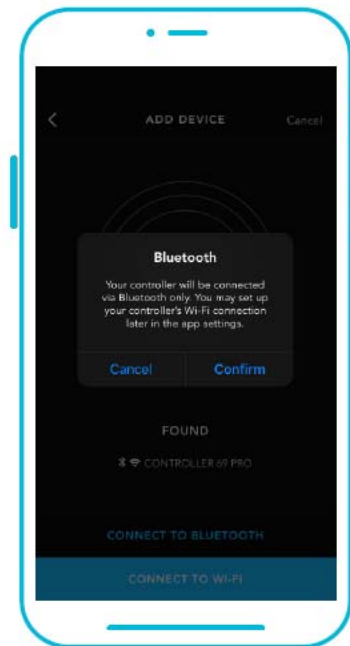
5

Connect using Bluetooth. To connect using Wi-Fi, skip to step 8.



6

Connecting with Bluetooth will disable Wi-Fi functionality. Go to the app settings page to re-enable and connect using Wi-Fi.



-- When pairing the app around multiple controllers, move your mobile device closer to your desired controller.

ADD A DEVICE

BLUETOOTH

7

Tap the DONE button to complete the pairing process.



ADD A DEVICE

WI-FI

8

Repeat steps 1-5. Log in or create an account to continue.



9

Enter your Wi-Fi network's password. You may also connect to an alternate 2.4 GHz router*.



When pairing the app around multiple controllers, move your mobile device closer to your desired controller.

ADD A DEVICE

WI-FI

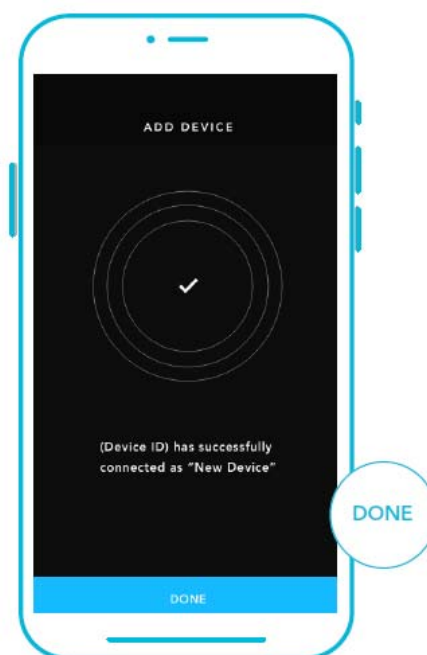
10

Follow these tips if the pairing process is unsuccessful.



11

Tap the DONE button to complete the pairing process.



*This controller is only compatible with 2.4 GHz frequency band routers. When connecting using Wi-Fi, make sure your mobile device is not connected to a 5 GHz frequency band network.

!

ADD A DEVICE

WI-FI

12

Your controller will appear in your smart device with a unique ID.



Warning:

This device complies with Part 15 of the FCC Rules. Operation is subject to the following two conditions: (1) this device may not cause harmful interference, and (2) this device must accept any interference received, including interference that may cause undesired operation.

Changes or modifications not expressly approved by the party responsible for compliance could void the user's authority to operate the equipment.

NOTE: This equipment has been tested and found to comply with the limits for a Class B digital device, pursuant to Part 15 of the FCC Rules. These limits are designed to provide reasonable protection against harmful interference in a residential installation. This equipment generates uses and can radiate radio frequency energy and, if not installed and used in accordance with the instructions, may cause harmful interference to radio communications. However, there is no guarantee that interference will not occur in a particular installation. If this equipment does cause harmful interference to radio or television reception, which can be determined by turning the equipment off and on, the user is encouraged to try to correct the interference by one or more of the following measures:

- Reorient or relocate the receiving antenna.
- Increase the separation between the equipment and receiver.
- Connect the equipment into an outlet on a circuit different from that to which the receiver is connected.
- Consult the dealer or an experienced radio/TV technician for help.

NOTE: This device and its antenna(s) must not be co-located or operation in conjunction with any other antenna or transmitter

RF Exposure Statement

To maintain compliance with FCC's RF Exposure guidelines, This equipment should be installed and operated with minimum distance of 20cm the radiator your body. This device and its antenna(s) must not be co-located or operation in conjunction with any other antenna or transmitter

ISED Canada Statement:

This device contains licence-exempt transmitter(s)/receiver(s) that comply with Innovation, Science and Economic Development

Canada 's licence-exempt RSS(s). Operation is subject to the following two conditions:

- 1) this device may not cause interference and
- 2) this device must accept any interference, including interference that may cause undesired operation of the device.

Radiation Exposure: This equipment complies with Canada radiation exposure limits set forth for an uncontrolled environment

RF Exposure Statement

To maintain compliance with IC's RF Exposure guidelines, This equipment should be installed and operated with minimum distance of 20cm the radiator your body. This device and its antenna(s) must not be co-located or operation in conjunction with any other antenna or transmitter

Déclaration du Canada:

Ce dispositif contient des transmetteurs/récepteurs transmitters exemptés de licence qui sont conformes à l'innovation, à la Science et au développement économique

Les flux RSS du Canada exempts de licences. L'exploitation est soumise aux deux conditions suivantes:

- 1) cet appareil ne doit pas causer d'interférences et
- 2) ce dispositif doit accepter toute interférence, y compris toute interférence pouvant entraîner un fonctionnement indésirable du dispositif.

Exposition au rayonnement: cet équipement est conforme aux limites d'exposition au rayonnement établies par le Canada pour un environnement non contrôlé
noncé d'exposition RF

Pour maintenir le respect des guides d'exposition RF d'IC, cquipment doit être installé et actionné avec une distance minimale de 20cm le radiateur de votre corps. Cet appareil et ses antennes ne doivent pas être co-localisé ou en opération en conjonction avec toute autre antenne ou émetteur