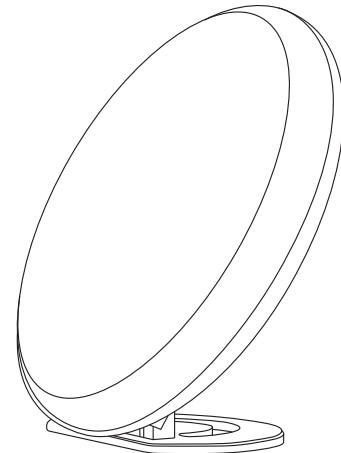


**TECBOSS**

support@tecboss.com

**TECBOSS**

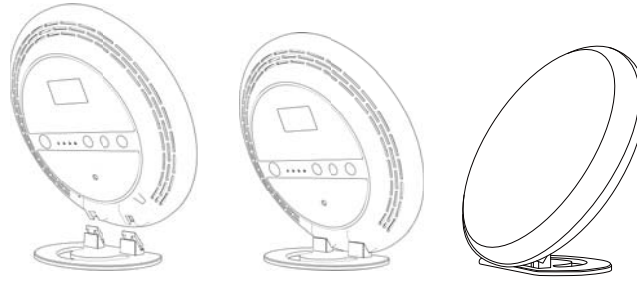


**NATURAL ENERGY LAMP**

User Manual  
English

## How to Use

1. Install Support (See Picture 1)



Step 1

Step 2

Step 3

Picture 1

2. Set up Lighting Temperature

Press the power button to switch the color temperature from daylight, natural light, and warm light.

3. Set up Lighting Brightness

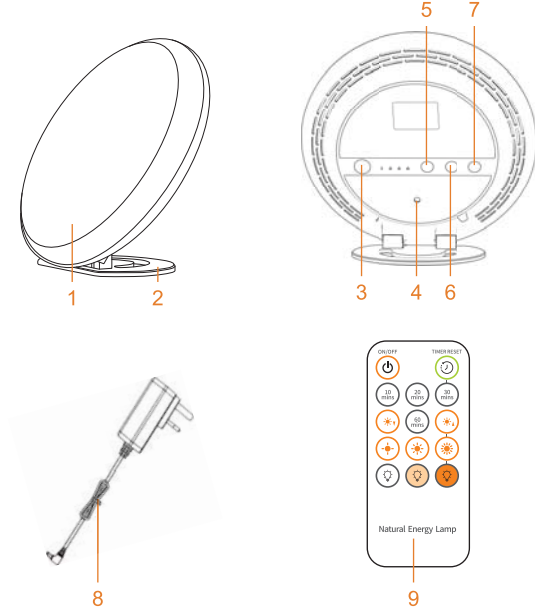
Press the +/- button to adjust the brightness. Short press to adjust for 5 levels of brightness. Long press to customize your desired brightness and then release the button.

4. Timer

Press the Timer button to set a 10/ 20/ 30/ 60 minutes timer. The light will turn off itself with the end of the setting time. Short press to turn off the timing function.

Thank you for purchasing this product. To ensure proper use and trouble-free operation, please read the user manual before use.

## Package including



1	LED Light Diffuser	6	Increase Brightness
2	Support Stand	7	Decrease Brightness
3	Power / Light Temperature	8	AC/DC Adapter
4	DC Port	9	RF Remote Control
5	Timer		

## Reminder

1. Before use:

Please do not use the natural energy lamp, if you have an eye disease such as cataracts, glaucoma, diseases of the optic nerve, and inflammation of the vitreous humor, etc.

Please consult your doctor before use, if you have diabetics or you are taking medication such as pain relievers, anti-hypertensive, or antidepressants, etc.

2. When using:

- ① Please do not stare at the light of the appliance or it may hurt your eyes.
- ② Please start with a short period of illumination at the beginning, and gradually increase the light exposure time.
- ③ The most effective period of the treatment is from 6 am. to 8 pm. and we recommend using it every day.
- ④ Keep using the lamp in a poor light season for at least 7 consecutive days or even longer, depending on your individual needs.

3. After use:

- ① Eye pain and headaches may arise after the first use. These will disappear later, as the nervous system accustoms to the new stimulation.

## Warranty

This product has a one-year warranty from the date of purchase. The warranty does not apply to products which have been lost, altered, broken, or damaged by misuse or failure to follow the instruction provided with the product.

For any inquiries concerning our products, or if you want to apply for a replacement or refund, please feel free to contact us by: [support@tecboss.com](mailto:support@tecboss.com)

This device complies with Part 15 of the FCC rules. Operation is subject to the following two conditions:

- 1) this device may not cause harmful interference, and
- 2) this device must accept any interference received, including interference that may cause undesired operation.

Caution: Changes or modifications not expressly approved by the party responsible for compliance could void your authority to operate the equipment.

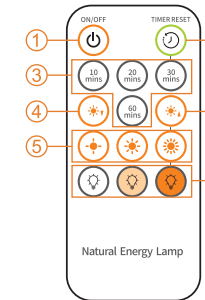
The device has been evaluated to meet general RF exposure requirement.

The device can be used in portable exposure condition without restriction.



C&E Connection  
E-Commerce (DE) GmbH  
Zum Linnegraben 20 65933,  
Frankfurt am Main, Germany  
Email: info@ce-connection.de  
Phone: +49 (0)9 27246646

## 6. Remote Control



- ① ON/OFF Button  
Press the button to turn on/ off the natural energy lamp.
- ② Timer Reset Button  
Short press the button to turn off the Timer.
- ③ Different Time Settings  
Press the 10/ 20/ 30/ 60 minutes button for different timing settings.
- ④ Lighting Brightness Levels Adjustment  
Press the / button to adjust the brightness. Short press to adjust for 5 levels of brightness. Long press to customize your desired brightness and then release the button.
- ⑤ Lighting Brightness Levels Selection low, middle and high brightness levels are available.
- ⑥ Lighting Temperature Selection. Daylight, natural light and warm light are available.

Need Attention: To avoid interference by other remote controls with the same frequency, please pair the lamp with the remote control when using it for the first time.

Pairing method: Hold the Timer Reset Button for 5 seconds until the 4 timer indicators(10/20/30/60 minutes) all light up. The pairing is successful after the indicator lights go out.

## Specification

Adapter Input Voltage	AC 100-240 V
Device Input Voltage	DC 24V. 1A
Power Rating	2-20W
Daylight	5500-5700 K
Natural Light	4000-4200 K
Warm Light	2800-3000 K
Materials	ABS+PC