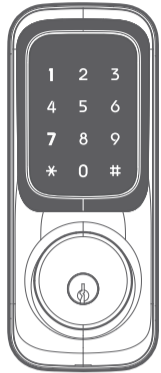


DIGITAL DOOR LOCK

Auxiliary Deadbolt Lock Type
(Password/Emergency Key)

- Please read this manual to ensure your safety and proper use of the product.
- All rights reserved. No part of this manual may be reproduced or used in any manner without the written permission of KT&C.
- The contents of this manual may be changed without prior notice to improve the function and quality of the product.



Safety Precautions

The following lists general safety precautions to ensure the safety of the user and prevent any damages to the product.

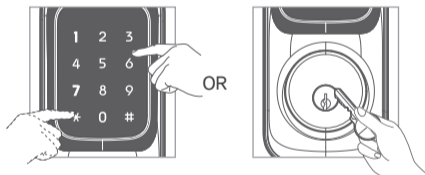
- Do not disassemble or attempt to repair the parts.
- Change user passwords periodically for your security.
- Do not spill liquid on the product or use the product with wet hands.
- Do not expose the indoor body to direct sunlight for a long time. It may result in temperature sensor alarm to go off.
- Ensure correct polarity (+/-).
- When the battery is low or dies, replace ALL batteries at the same time.
- Upon low battery alert, replace the battery within one week.
- When cleaning the product, do not directly spray flammable substances such as alcohol or benzene. Wipe using a clean cloth.

*We recommend the door lock be installed by an experienced professional to avoid malfunction.

How to Use

4

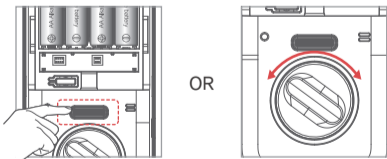
◆ Unlock from Outside



- Touch the number pad and enter the registered password + [*] key.
- Use Emergency key.
[Optional] You can open the door using the smartphone app.

- ◇ The door would not open with the master password.
- ◇ Imaginary function (prevent password exposure) – Up to 20 digits including password. –You can conceal your password exposure by entering an imaginary number before or after the password.
[Example] '123456' password → '2345123456' or '1234562345'
- ◇ Automatic re-lock: If the door is not opened within 5 seconds after unlocking, it will automatically get locked again.
- ◇ Safe mode: When 5 consecutive authentication error occurs, an alarm will go off and number pad operation stops for 3 minutes. It can be reset by unlocking from inside using manual knob or [Open/Close] button.

◆ Unlock from Inside



- Click the [Open/Close] button.
- Turn the manual knob.
For emergency use.

- ◇ If the door is opened from the inside while the external forced lock function is set, an intrusion alarm may go off.

◆ Internal force Lock

This function prevents another user to gain access with a registered password while the user is inside.

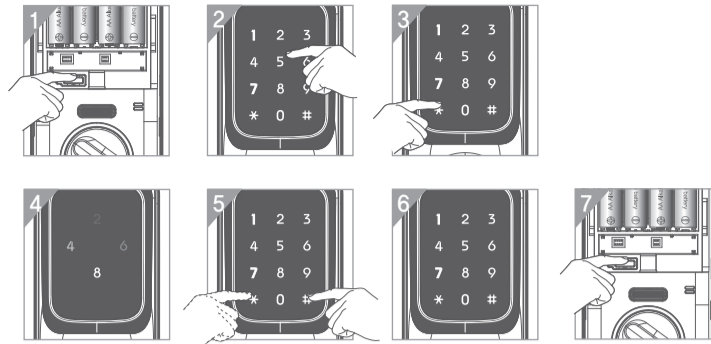
- Set** Hold down [Open/Close] button for 3 seconds in close state.
- Release** If you press [Open/Close] button from the inside or open the door using the manual knob, it will be released.

- ◇ When you touch the number pad from the outside, an alarm sounds.
- ◇ Under this mode, the smartphone app will not work. Only emergency key works.

How to Use

2

◆ Password Registration



1. In open state, click [Registration] button located behind the battery cover. If the master password is already registered, enter 'Master Password + [*]' key.
2. Enter a new password.
Password has to be 4-10 digits.
3. Press [*] key.
4. The entered password will be lit up sequentially on the number pad.
5. If the entered password is correct, press [*] key to register or [#] key to retry.
6. Upon registering a new password, a registered storage number (Register ID) will light up on the number pad.
7. If you want to register more passwords, repeat steps 2-5.
8. When the password registration is done, click [Registration] button to complete.

- ◇ When registration is not completed properly, the previous password will be maintained.
- ◇ When registering for the first time, the first registered password will replace its factory default password of '1234'.
- ◇ Up to 20 passwords can be registered and registration automatically stops when all 20 Register IDs are being used.
- ◇ The registered master password cannot be registered as a password.
- ◇ The same password cannot be registered under multiple Register ID.

How to Use

5

◆ External Force Lock

This is a security enhancement function that triggers an alarm when an intruder operates the door lock from inside when home is vacant for an extended time.

- Set** Touch the number pad + Password + Hold down [#] key for 3 seconds.
- Release** Unlocking the lock using a password or the app.

- ◇ An alarm will trigger when [Open/Close] button or use the manual knob.
- ◇ An alarm will trigger when [Registration] button is clicked.
- ◇ The function is sustained even when the battery replacement.

◆ High-Temperature Alarm

A high-pitched alarm will sound when the inside temperature reaches above 75°C (167°F) while the door is closed.

◆ Open Door Alert

This function is to notify the open state of the door in Auto-Lock mode. If the door is opened and does not get closed within a certain period, the notification alarm will sound after 10 and 15 seconds.

◆ Etiquette Mode

This function is to temporarily disable the number pad tone so as not to disturb those inside the house.

- Set** Touch the number pad and press [#] key before entering the password.
- Release** This is a one-time function. The number pad tone will sound on the next use.

- ◇ Even in etiquette mode, an alarm will go off in any alarm situations.
- ◇ If there is no operation for 7 seconds after pressing [#] key, the etiquette mode ends.

◆ Volume Control

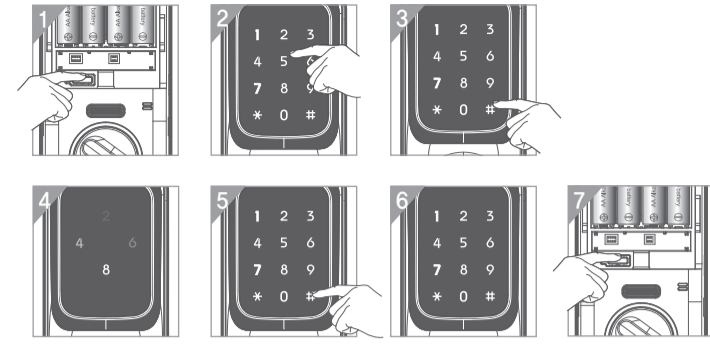
- Volume Up** [Registration] Button (3 seconds) + [1] + [3] (up a step) + [Registration] Button
- Volume Down** [Registration] Button (3 seconds) + [1] + [1] (down a step) + [Registration] Button

- ◇ The volume can be adjusted in seven levels while the lowest level is silent.
- ◇ When the volume reaches the highest or lowest level, the LED would stop flashing upon up or down key.
- ◇ Alarm volume will be steady regardless of volume level setting.
- ◇ At factory reset, the volume is set to level 6.

How to Use

3

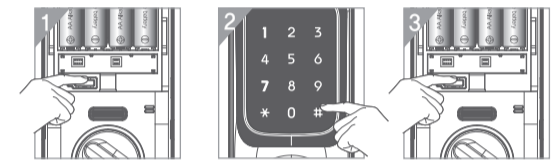
◆ Delete Individual Password



1. In open state, click [Registration] button. If the master password is already registered, enter master password + [*] key.
2. Enter the Register ID (1 to 20) and [#] key.
The password for the selected Register ID will be lit on the number pad.
3. Press [#] key to confirm.
4. If you want to delete more passwords, repeat steps 2-5.
5. When done, click [Registration] button to complete the deletion.

- ◇ If there is no password stored under the selected Register ID, an error tone will sound.
- ◇ When all saved passwords are deleted, the session will automatically end.
- ◇ When all saved passwords are deleted, only the factory default password (1234) will remain operational.

◆ Delete All Passwords



1. In open state, click [Registration] button. If the master password is already registered, enter master password + [*] key.
2. Press [#] key.
3. Hold down [Registration] button for 3 seconds.

- ◇ When all passwords are deleted, only the factory default password (1234) will remain operational.

How to Use

6

◆ Auto/Manual Lock

[Auto lock setting]

1. In open state, hold down [Registration] button for 3 seconds. If the master password is registered, enter the master password + [*] key.
2. Press [3].
3. Press [1].
4. Click [Registration] button to complete the setup.

- ◇ Auto-lock is set by default.
- ◇ Only manual lock mode will be available when the door close sensor is not installed.

[Manual lock setting]

1. In open state, hold down [Registration] button for 3 seconds. If the master password is registered, enter the master password + [*] key.
2. Press [3].
3. Press [2].
4. Click [Registration] button to complete the setup.

- ◇ Lock from inside: Press [Open/Close] button or turn the manual knob to lock.
- ◇ Lock from outside: Touch the number pad for more than 1 second to lock.

◆ Delayed Lock

1. In open state, hold down [Registration] button for 3 seconds.
2. Press [3].
3. Press [3] or [4] or [5] or [6] to set.
[3] : 15 seconds, [4] : 30 seconds, [5] : 1 minute, [6] : 2 minutes
4. Click [Registration] button to complete.

- ◇ It will automatically lock after the set delay time (15 seconds, 30 seconds, 1 minute, 2 minutes) from the point when the deadbolt is unlocked.
- ◇ Locking will be performed regardless of the door close sensor status.
- ◇ When the door is manually locked within the set delay, the time delay will be overridden. Auto/manual lock setting would override and disable this time delay setting.

◆ Intrusion/Destructive Alarm

Intrusion Alarm It will make a high-pitched alarm sound upon abnormal door opening while the door is locked.

Destructive Alarm It will make a high-pitched alarm sound upon the detection of damage or abnormal detachment of the unit.

- ◇ The intrusion alarm function is not available when the door close sensor is not installed.
- ◇ In the event of an alarm, hold down [Registration] button for more than 3 seconds or enter the password on the number pad to stop.

◆ Deadbolt Jam Notification

If the deadbolt does not properly open or close, the door lock will make 2 more attempts before an error alert.

◆ Temporary Password (One-Time Password)

Set In close state, touch the number pad, enter the password + [#] + [#] + 5-digit temporary password + [*]

Delete The registered temporary password will automatically be deleted after a single-use.

- ◇ The temporary password is valid for once.
- ◇ The temporary password length is fixed at 5 digits.
- ◇ It can be set only when the door is locked.
- ◇ If the communication pack (BLE module) is installed, a temporary password cannot be created at the door lock. It can only be created from the remote app.

◆ Dual Password On/Off

This function is used to prevent security risk caused by residual fingerprints on the number pad.

Activate In open state, [Registration] Button (3 seconds) + [4] + [Registration] Button

Deactivate In open state, [Registration] Button (3 seconds) + [4] + [Registration] Button

- ◇ When activated, 3 random numbers on the number pad will be lit. Once you select those numbers, all numbers on the number pad will be lit so that you can enter the password.
- ◇ This function will toggle between activate and deactivate using the same command.

◆ Master Password

This function is for the administrator to manage the master password.

Register

In open state, hold down [Registration] Button for 3 seconds + [2] + Master password (4~10 digits) + [*].

Modify

In open state, hold down [Registration] button for 3 seconds + [2] + registered master password + [*] + new master password (4~10 digits) + [*].

Delete

In open state, hold down [Registration] button for 3 seconds + [5] + registered master password + [#] + [Registration] button for 3 seconds.

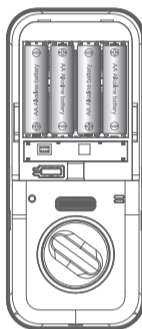
- ◇ A password that's the same as the master password cannot be registered.
- ◇ The master password cannot be used to unlock the door.
- ◇ When the master password is deleted, you can proceed with registering procedure without entering the master number.

◆ Low Voltage Alarm

- When a low voltage (below 4.2V) is detected, a low voltage alarm sounds after the door lock operation.
- The [1], [4], [7], [8], and [9] LEDs on number pad flashes while the melody occurs and then turns off.
The low voltage alarm will continue to make a sound until the voltage from the battery becomes 5.7V or higher.

◆ Battery Replacement

After removing all used batteries, insert the AA alkaline batteries according to the polarity.



- ◇ You must use alkaline batteries.
- ◇ When replacing batteries, replace all batteries at the same time.
- ◇ A leak from the battery may damage the product. Please check the battery status every 6 months.

Federal Communication Commission Interference Statement

This device complies with Part 15 of the FCC Rules. Operation is subject to the following two conditions:

- (1) This device may not cause harmful interference, and
- (2) This device must accept any interference received, including interference that may cause undesired operation.

This equipment has been tested and found to comply with the limits for a Class B digital device, pursuant to Part 15 of the FCC Rules. These limits are designed to provide reasonable protection against harmful interference in a residential installation. This equipment generates, uses and can radiate radio frequency energy and, if not installed and used in accordance with the instructions, may cause harmful interference to radio communications. However, there is no guarantee that interference will not occur in a particular installation. If this equipment does cause harmful interference to radio or television reception, which can be determined by turning the equipment off and on, the user is encouraged to try to correct the interference by one of the following measures:

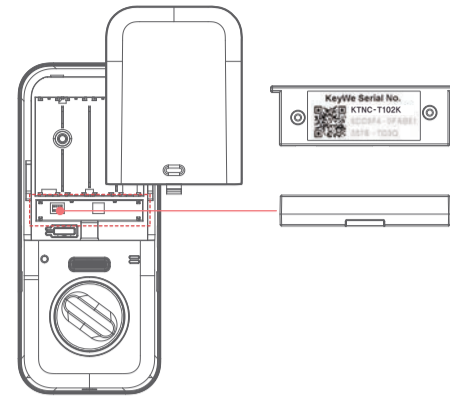
- Reorient or relocate the receiving antenna.
- Increase the separation between the equipment and receiver.
- Connect the equipment into an outlet on a circuit different from that to which the receiver is connected.
- Consult the dealer or an experienced radio/TV technician for help.

FCC Caution: Any changes or modifications not expressly approved by the party responsible for compliance could void the user's authority to operate this equipment. This transmitter must not be co-located or operating in conjunction with any other antenna or transmitter.

Radiation Exposure Statement:

This equipment complies with FCC radiation exposure limits set forth for an uncontrolled environment. This equipment should be installed and operated with minimum distance 20cm between the radiator & your body.

◆ BLE Communication Module (Optional)



Open the battery cover and connect BLE Module to its connector.

[Door Lock Registration and How to use]

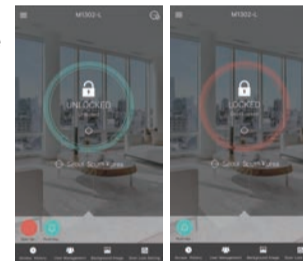
1. Search for 'Keywe' from Play Store or APP Store and Install.
2. Sign up in the app.
3. From the menu located upper left select 'Connect Door Lock'.
4. Click '+' sign in the middle of registration screen and then select 'QR Code' registration.
5. Scan the QR CODE to register the BLE Module.
6. Click 'Confirmation' button to complete.



- ◇ It will only work on iOS 8 or later and Android 4.4 or later.
- ◇ The operation may not be smooth when the smartphone OS is not compatible.

[OPEN/CLOSE via BLE]

- Upon execution of the KeyWe app, it will establish a connection with the BLE module.
- Once connection is successful, the app will display the status of the door lock on the screen.
- If the user clicks the center area of the screen, the door Lock status will change.
- For further information, refer to below Link. [<https://thekeywe.blog/category/app-user-guide/>]



◆ Troubleshoot

Symptom	Possible Cause	Action
After password authentication, [1],[4],[7],[8],[9] on the number pad will be lit and a melody sounds.	Battery issue	Replace all batteries
While locking/unlocking, the motor will stop in the middle and the lock beeps.	Deadbolt jamming due to damaged door and door frame	Check/adjust the door closer between the door and door frame.
Door lock does not respond upon touching the number pad.	Safe mode due to multiple password input	Try again in about 3 minutes.
When the door is closed, the automatic lock doesn't work.	The door close sensor may not have been installed or defective.	Verify if the door close sensor is installed or contact KT&C customer service.
When opening and closing the door, there is a feeling of shaking or getting stuck.	The fixing screw for the door lock or striker may have been loosened.	Check all fixing screws and try using glue as needed.

► The contents of this manual may be changed without prior notice to improve the function and quality of the product.

■ Product Warranty

Product name	T102K-TW
Serial number	
Purchase Date	20
Installation Company	
Installer	
Contact	

* Note: Please keep your warranty note above for warranty service.

1. The warranty for this product is covered by the warranty as above stated.
2. The warranty period is one year from the purchase.