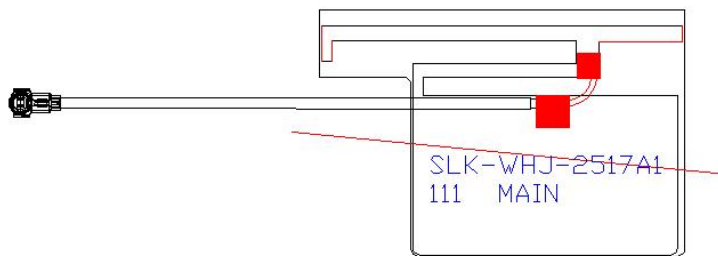


# WIFIMAIN Antenna (2517A1)

## 1. Explanation of Product number :

**S L K - W H J - 2 5 1 7 A 1 - L - 2 6 0 I V - B**

**1                      2                      3                      4                      5**



Product Code:

(1) Customer:

WHJ:Weihejia

(2) Project:

2517A1: SLK-WHJ-2517A1 (WIFI MAIN antenna)

(3) Welding Position

L: Left

(4) Cable Length:

260IV: 260\*0.81MM IPEX4

(5) Cable Color

B: Black

## 2. Features

\*Stable and reliable in performances

\*Compact size

\*RoHS compliance

### 3. Applications

- \* IEEE802.11 (a/b/g/n)
- \* Hand-held devices when WIFI (802.11a/b/g/n) functions are needed

### 4. Description

Holy bond's FPC antenna series are specially designed for WIFI (802.11a/b/g/n) applications. Based on Holy bond's proprietary design and processes, this FPC antenna has excellent stability and sensitivity to consistently provide high signal reception efficiency.

### 5. Electrical Specifications

#### 5-1

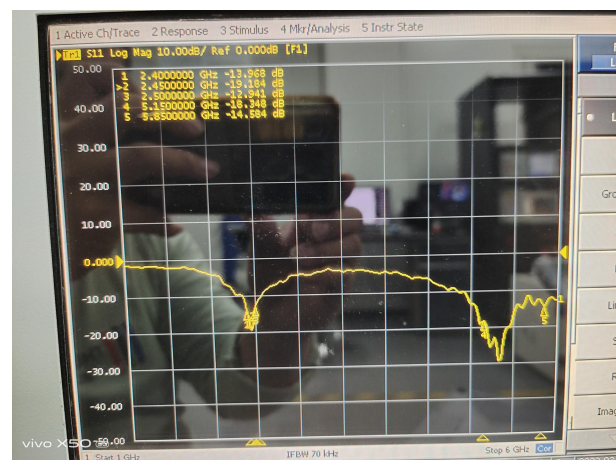
Characteristics	Specifications	Unit
Outline Dimensions	25.43x17.19x 0.12	mm
Center Frequency	2.4-2.5+5.15-5.85	GHz
Bandwidth(under-10dB return loss)	130min	MHz
VSWR	3max	

#### 5-2.

VSWR

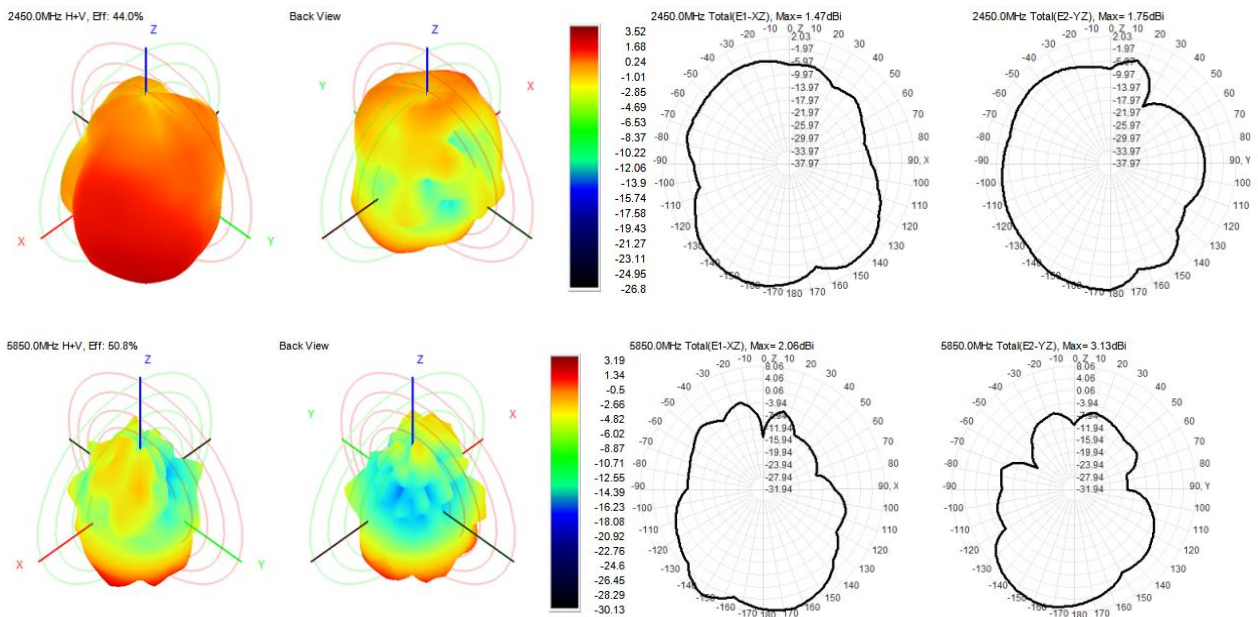


S11

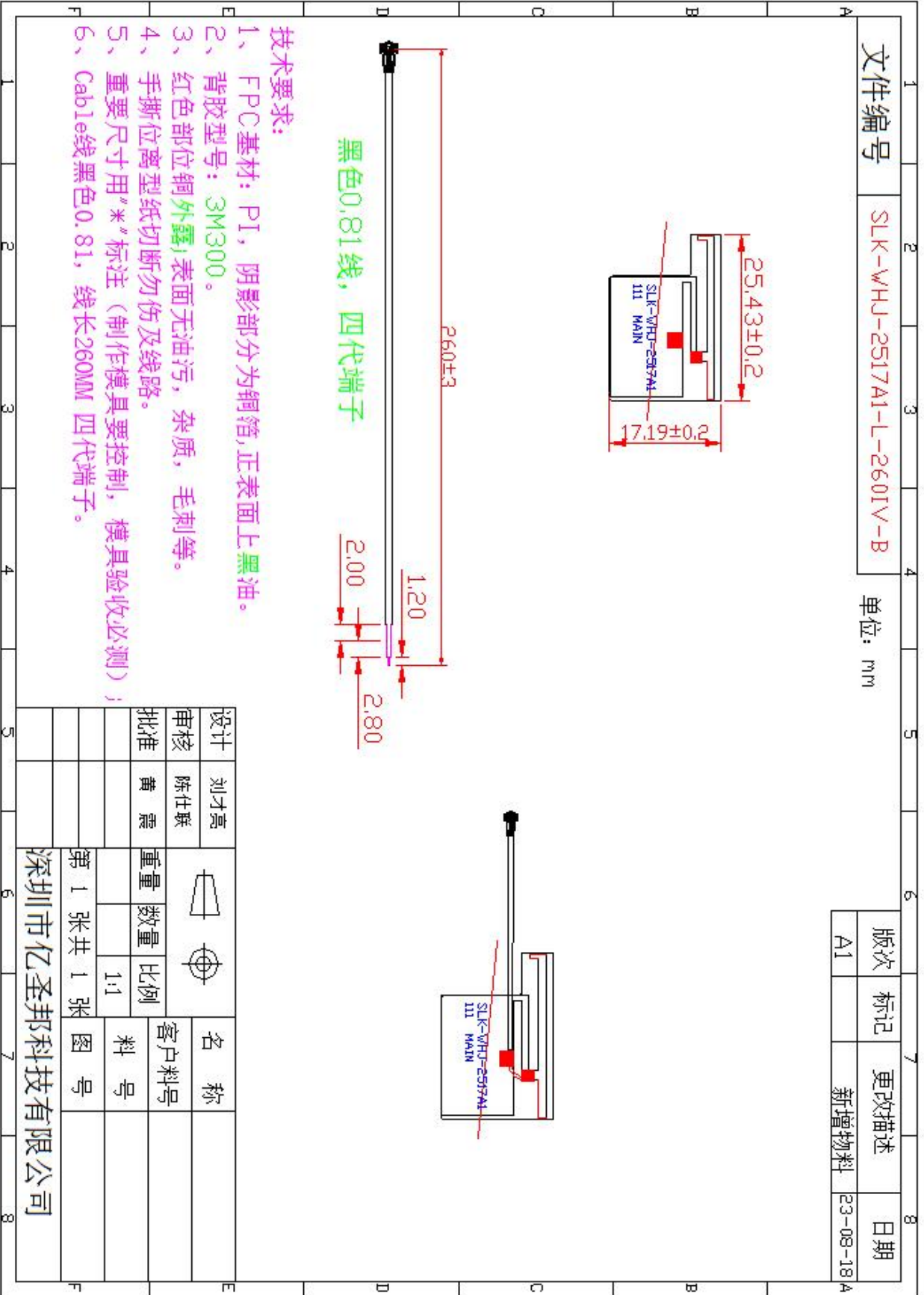


### 5-3.BT Antenna Gain/Efficiency/Radiation Pattern of 3D

Frequency (MHz)	Efficiency (dBi)	Gain (dBi)	Efficiency (%)
2400.0	-3.69	3.55	42.73
2410.0	-3.53	3.77	44.37
2420.0	-3.51	3.97	44.57
2430.0	-3.27	3.44	47.12
2440.0	-3.51	3.44	44.61
2450.0	-3.56	3.52	44.04
2460.0	-3.46	3.71	45.09
2470.0	-3.65	3.63	43.18
2480.0	-3.35	3.91	46.25
2490.0	-3.52	3.89	44.49
2500.0	-3.72	3.38	42.47



## 6. Antenna Dimensions (unit: mm)

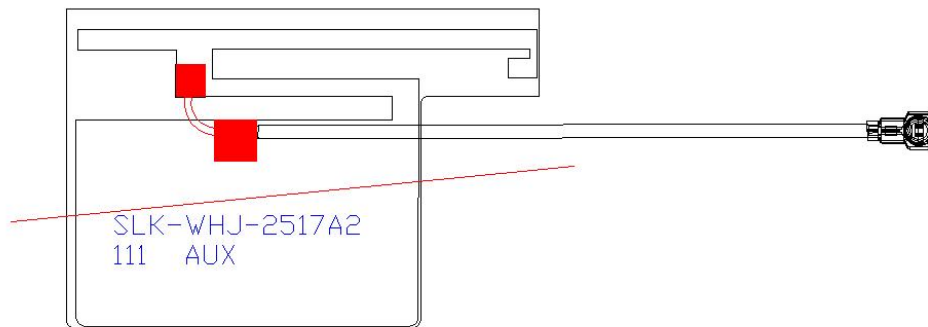


# WIFI AUX Antenna (2517A2)

## 1. Explanation of Product number :

**S L K - W H J - 2 5 1 7 A 2 - R - 3 0 0 I V - G**

**1                      2                      3                      4                      5**



Product Code:

(1) Customer:

WHJ:伟合佳

(2) Project:

2517A2: SLK-WHJ-2517A2 (WIFI AUX antenna)

(3) Welding Position

R: Right

(4) Cable Length:

300IV: 300\*0.81MM 四代端子

(5)Cable Color

G: Gary

## 2. Features

\*Stable and reliable in performances

\*Compact size

\*RoHS compliance

### 3. Applications

- \* IEEE802.11 (a/b/g/n)
- \* Hand-held devices when WIFI (802.11a/b/g/n) functions are needed

### Description

Holy bond's FPC antenna series are specially designed for WIFI (802.11a/b/g/n) applications. Based on Holy bond's proprietary design and processes, this FPC antenna has excellent stability and sensitivity to consistently provide high signal reception efficiency.

### 5. Electrical Specifications

#### 5-1

Characteristics	Specifications	Unit
Outline Dimensions	25.43x17.19x 0.12	mm
Center Frequency	2.4-2.5+5.15-5.85	GHz
Bandwidth(under-10dB return loss)	130min	MHz
VSWR	3max	
Impedance	50	$\Omega$
Polarization	Linear Polarization	

#### 5-2.

#### VSWR

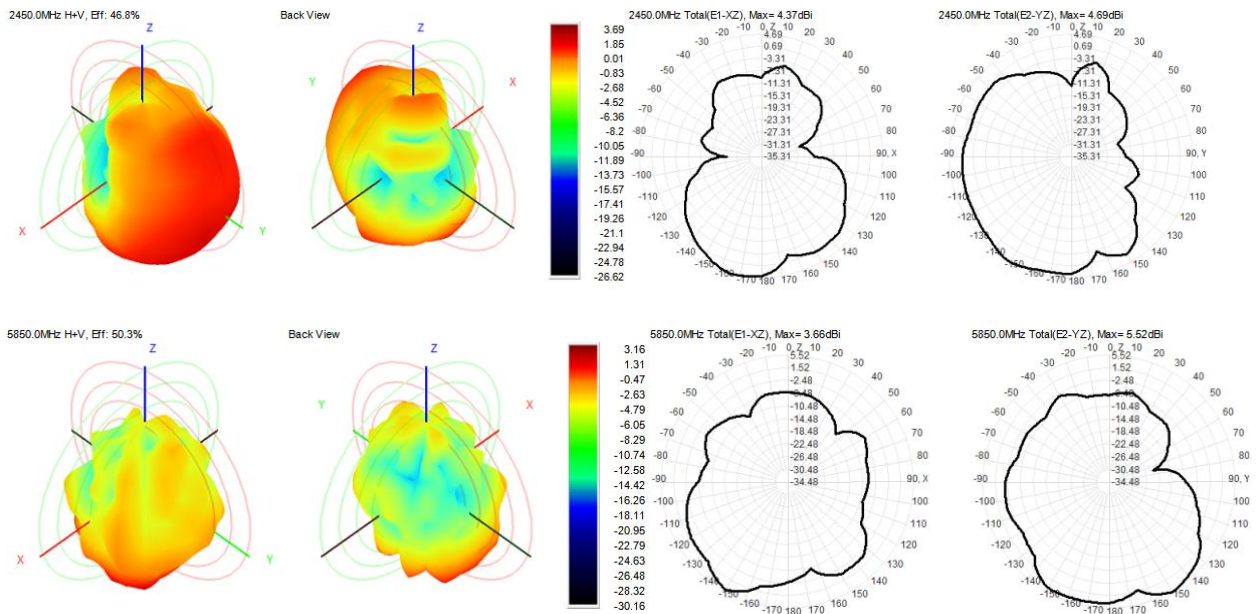


#### S11

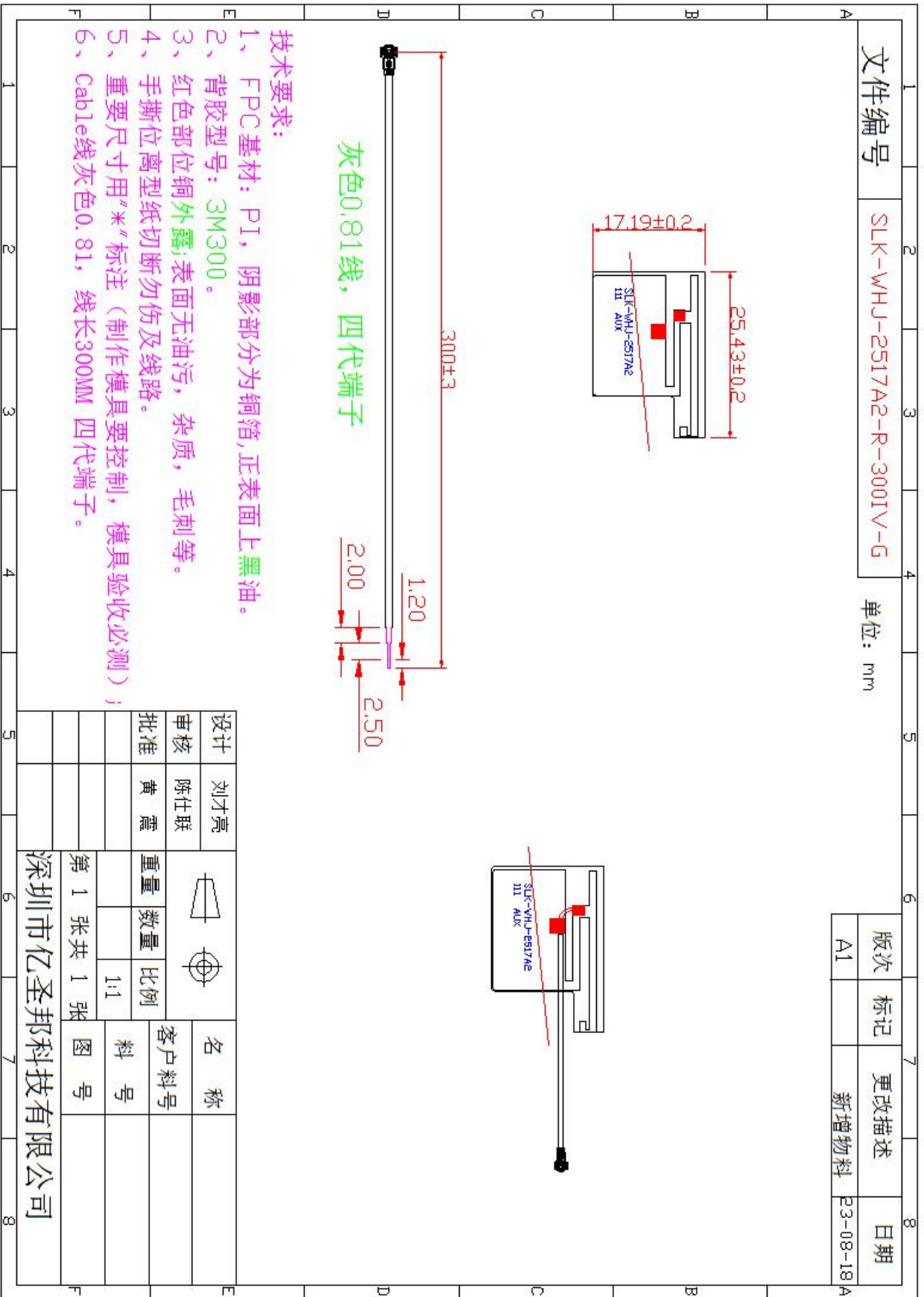


### 5-3.WIFI Antenna Gain/Efficiency/Radiation Pattern of 3D

Frequency (MHz)	Efficiency (dBi)	Gain (dBi)	Efficiency (%)
2400.0	-3.29	3.15	46.85
2410.0	-3.12	3.50	48.81
2420.0	-3.21	3.40	47.74
2430.0	-2.96	3.81	50.64
2440.0	-3.30	3.53	46.80
2450.0	-3.30	3.69	46.77
2460.0	-3.20	3.85	47.89
2470.0	-3.44	3.01	45.29
2480.0	-3.14	3.66	48.57
2490.0	-3.39	3.65	45.81
2500.0	-3.62	3.68	43.44
5150.0	-3.42	4.46	45.50
5350.0	-3.11	4.11	48.84
5550.0	-3.07	4.09	49.37
5750.0	-3.01	4.24	50.01
5850.0	-2.99	4.16	50.27

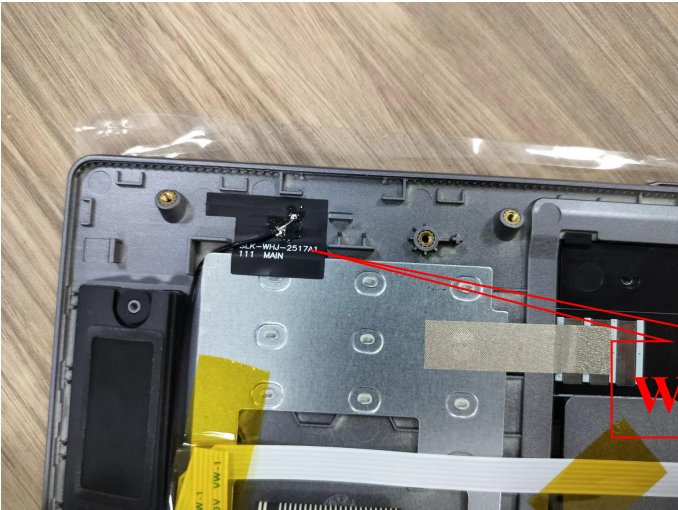


## 6. Antenna Dimensions (unit: mm)





# 7. Antenna Picture



WIFI ANT



BT ANT