

深圳市亿圣邦科技有限公司 样品承认书

SPECIFICATION FOR APPROVAL

公司名称 (客户填写): 深圳市伟合佳电子科技有限公司

物料代码 (客户填写): _____

规格型号 (客户填写): 52 订单

承认日期 (客户填写): _____

供应商名称 (SLK 填写): 深圳市亿圣邦科技有限公司

供应商规格型号 (SLK 填写): WIFIMAIN:SLK-WHJ-2616A-L-320IV-B

WIFIAUX:SLK-WHJ-2716B-R-430IV-G

承 认 签 章

供 应 商 承 认 (SLK 填写栏)

深圳市伟合佳电子科技有限公司

工 程 师

审 核

批 准

工 程 师

审 核

批 准

陈仕联

黄震

林美财

盖章签署

盖章签署

日 期

2023. 5. 17

日 期

批示: 接受 有条件接受

备注 (客户填写):

供应商名称: 深圳市亿圣邦科技有限公司

供应商地址: 深圳市宝安区深圳前湾硬科技产业园 C 栋 101

电 话: 18025305599

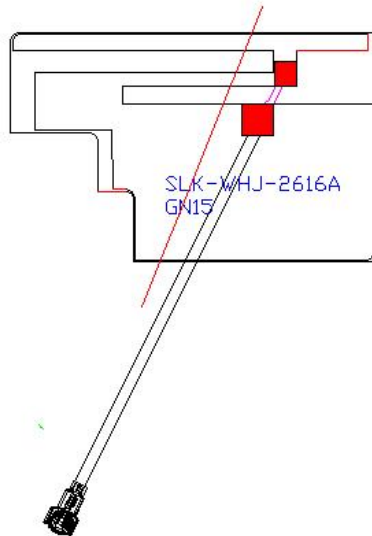
电 话: 18666299104

WIFI MAIN Antenna (2616A)

1. Explanation of Product number

S L K - W H J - 2 6 1 6 A - L - 3 2 0 I V - B

1 2 3 4 5



Product Code:

(1) Customer:

WHJ:伟合佳

(2) Project:

2616A: SLK-WHJ-2616A (WIFI MAIN antenna)

(3) Welding Position

L:Left

(4) Cable Length:

320IV: 320*0.81MM四代端子

(5)Cable Color

B: Black

2. Features

*Stable and reliable in performances

*Compact size

*RoHS compliance

3. Applications

- * IEEE802.11 (a/b/g/n)
- * Hand-held devices when WIFI (802.11a/b/g/n) functions are needed

4. Description

Holy bond's FPC antenna series are specially designed for WIFI (802.11a/b/g/n) applications. Based on Holy bond's proprietary design and processes, this FPC antenna has excellent stability and sensitivity to consistently provide high signal reception efficiency.

5. Electrical Specifications

5-1

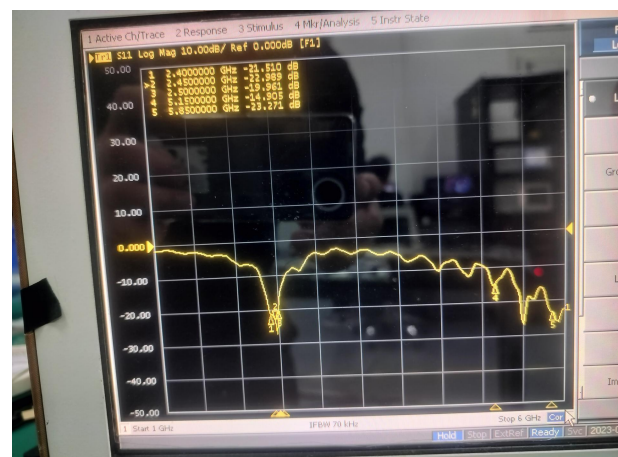
Characteristics	Specifications	Unit
Outline Dimensions	26.19x16.19x 0.12	mm
Center Frequency	2.4-2.5+5.15-5.85	GHz
VSWR	3max	
Impedance	50	Ω
Polarization	Linear Polarization	

5-2.

VSWR

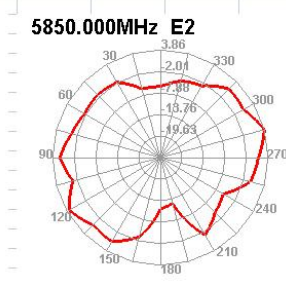
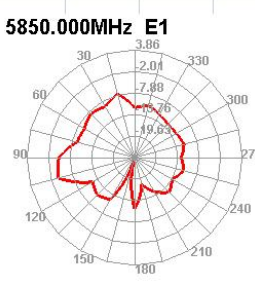
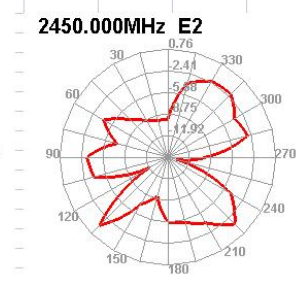
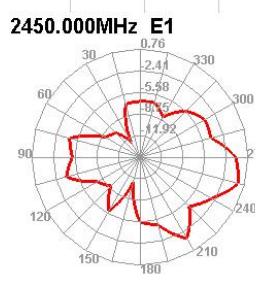
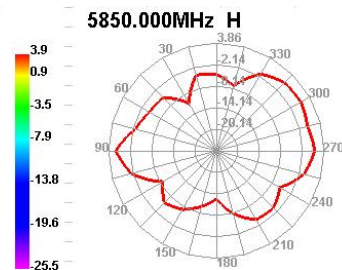
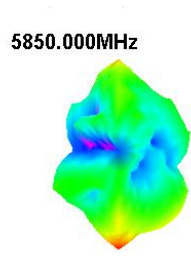
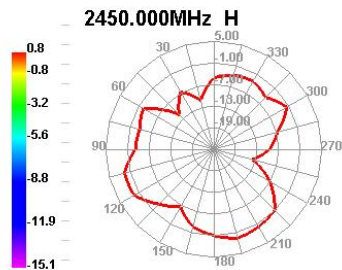
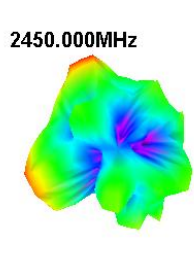


S11

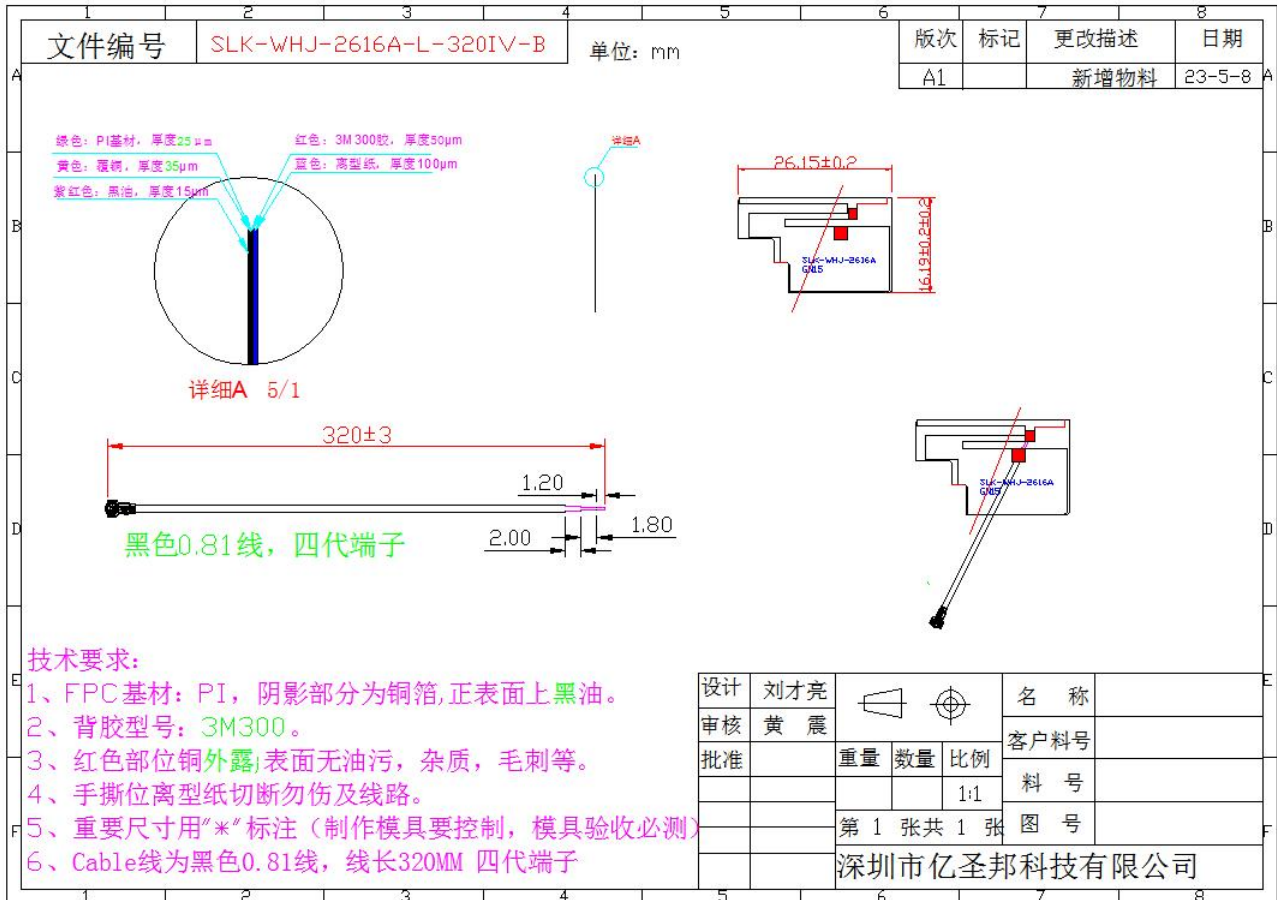


5-3.WIFI +BT Antenna Gain/Efficiency/Radiation Pattern of 3D

Frequency(MHz)	Efficiency (%)	AverageGain(dB)	Peak GAIN (dBi)
2400	37.88	-4.22	0.54
2410	36.07	-4.43	0.24
2420	37.72	-4.23	0.34
2430	37.11	-4.31	0.49
2440	39.25	-4.06	0.57
2450	40.72	-3.9	0.76
2460	40.18	-3.96	0.75
2470	40.55	-3.92	0.9
2480	40.17	-3.96	0.91
2490	40.91	-3.88	0.93
2500	42.37	-3.73	1.16
5150	35.29	-4.52	2.08
5350	36.24	-4.41	2.73
5550	37.1	-4.31	2.63
5750	38.16	-4.18	2.07
5850	38.3	-4.17	2.16



6. Antenna Dimensions (unit: mm)

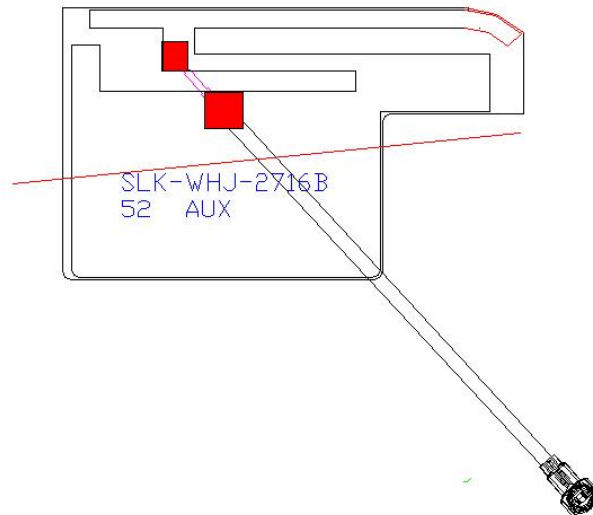


WIFIAUX Antenna (2716B)

1. Explanation of Product number :

S L K - W H J - 2 7 1 6 B - R - 4 3 0 I V - G

1 2 3 4 5



Product Code:

(1) Customer:

WHJ:伟合佳

(2) Project:

2716B: SLK-WHJ-2716B(WIFI AUX antenna)

(3) Welding Position

R: Right

(4) Cable Length:

430IV: 430*0.81MM四代端子

(5)Cable Color

G: Gray

2. Features

*Stable and reliable in performances

*Compact size

*RoHS compliance

3. Applications

- * IEEE802.11 (a/b/g/n)
- * Hand-held devices when WIFI (802.11a/b/g/n) functions are needed

4. Description

Holy bond's FPC antenna series are specially designed for WIFI (802.11a/b/g/n) applications. Based on Holy bond's proprietary design and processes, this FPC antenna has excellent stability and sensitivity to consistently provide high signal reception efficiency.

5. Electrical Specifications

5-1

Characteristics	Specifications	Unit
Outline Dimensions	27.5x16.19x 0.12	mm
Center Frequency	2.4-2.5+5.15-5.85	GHz
VSWR	3max	
Impedance	50	Ω
Polarization	Linear Polarization	

5-2.

VSWR



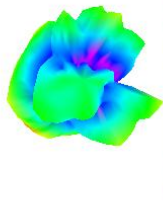
S11



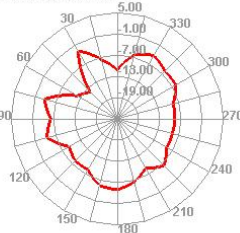
5-3.WIFI +BT Antenna Gain/Efficiency/Radiation Pattern of 3D

Frequency(MHz)	Efficiency (%)	AverageGain(dB)	Peak GAIN (dBi)
2400	35.94	-4.44	2.28
2410	37.39	-4.27	2.3
2420	36.53	-4.37	2.02
2430	36.45	-4.38	1.26
2440	37.22	-4.29	1.44
2450	40.52	-3.92	2.14
2460	39.6	-4.02	2.15
2470	40.48	-3.93	2.95
2480	40.02	-3.98	3.25
2490	40	-3.98	3.85
2500	39.73	-4.01	3.73
5150	33.72	-4.72	2.14
5350	34.49	-4.62	1.77
5550	36.61	-4.36	3.79
5750	37.8	-4.23	3.1
5850	37.84	-4.22	2.47

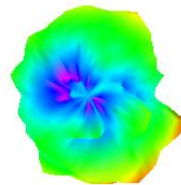
2450.000MHz



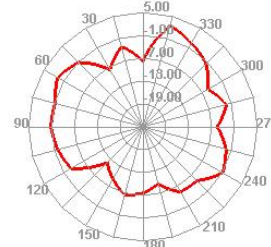
2450.000MHz H



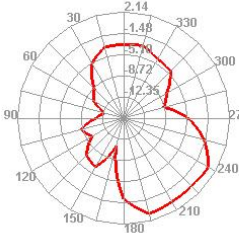
5850.000MHz



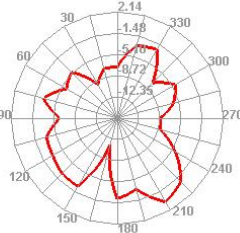
5850.000MHz H



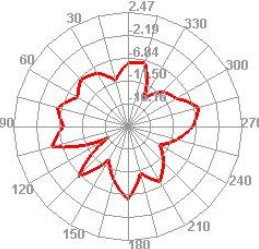
2450.000MHz E1



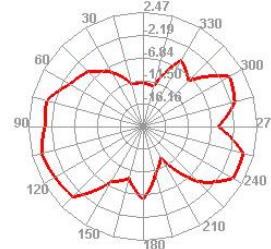
2450.000MHz E2



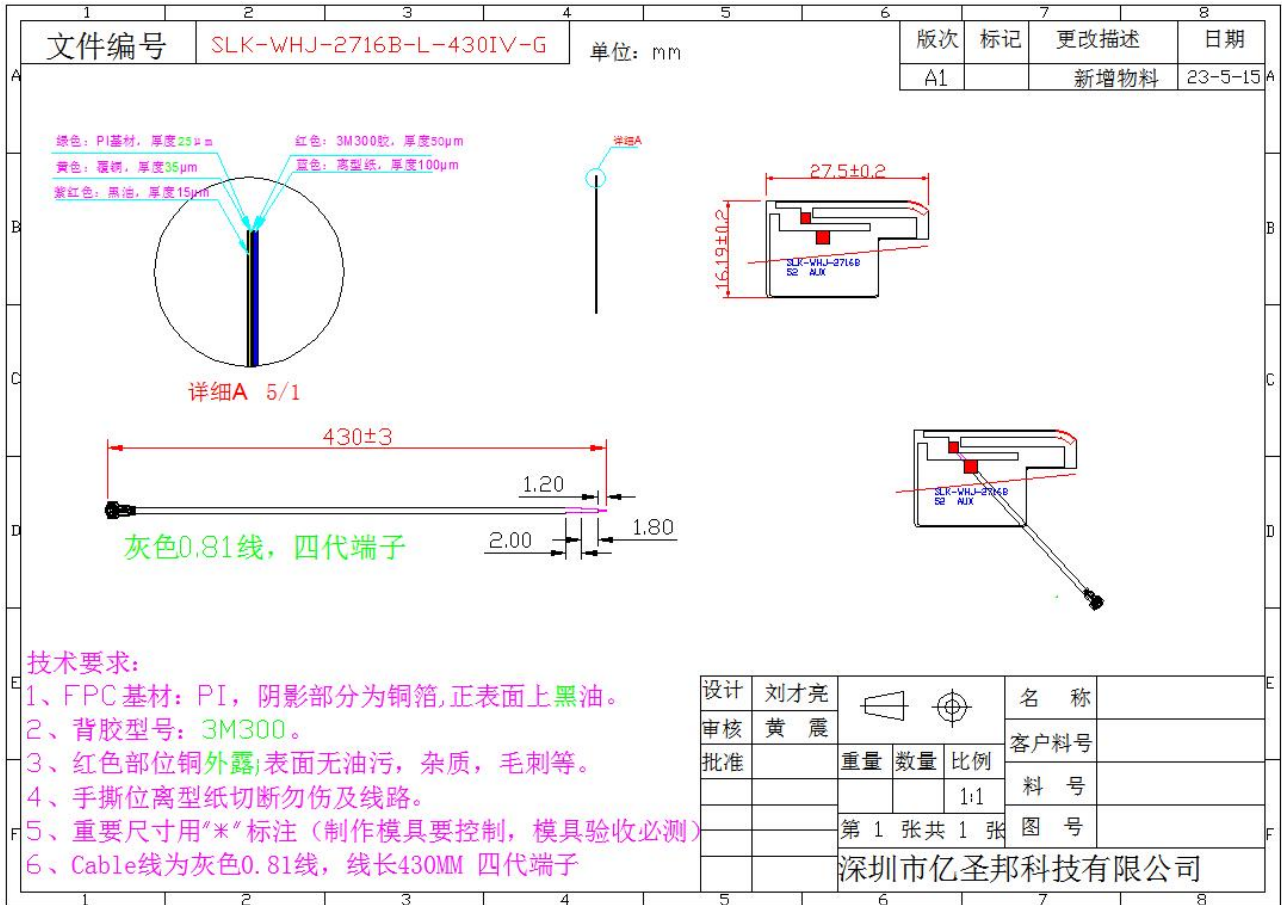
5850.000MHz E1



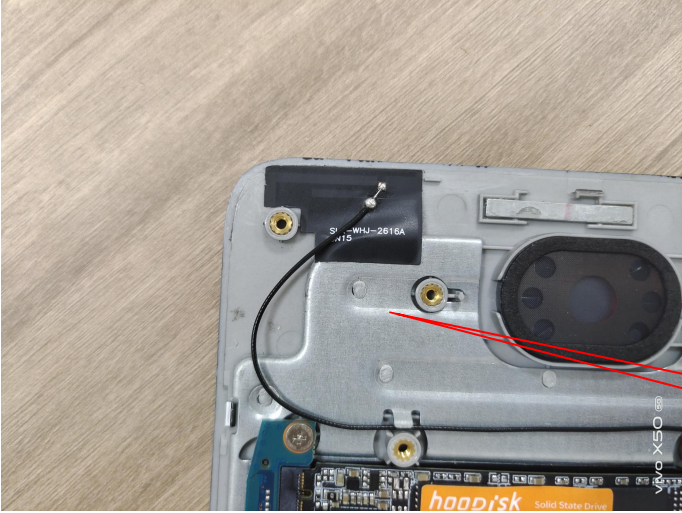
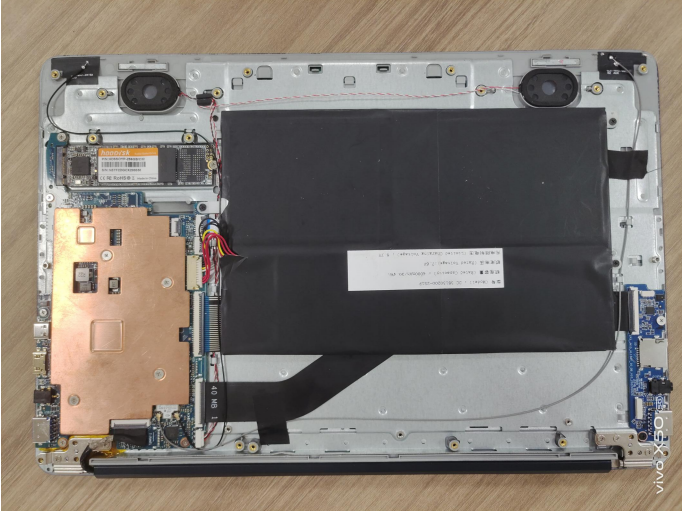
5850.000MHz E2



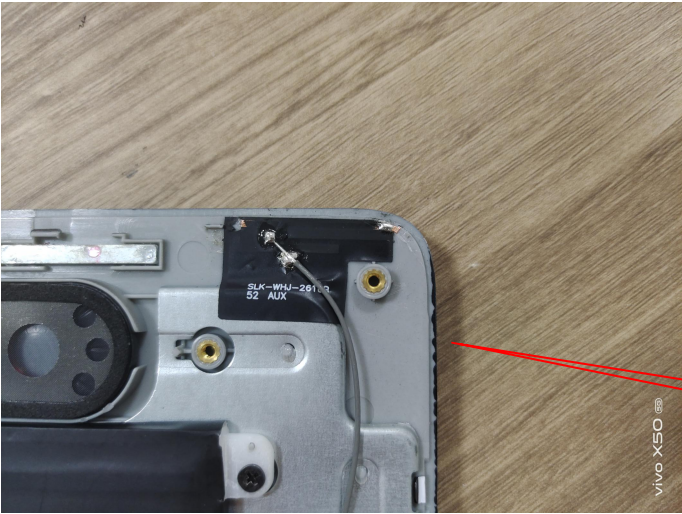
6. Antenna Dimensions (unit: mm)



7. Antenna Picture



WiFi 主天线



WiFi 分集天线