

## 1. Antenna Description:

Antenna type	PIFA antenna
Model	T805
Frequency range	5180-5240MHz, 5745-5825MHz
Manufacturer	Shenzhen Weihejia Electronic Technology Co.,LTD
ANT Peak Gain	0.95 dBi

## 2. Antenna Photo:



### 3. Test Equipment & Conditions

#### 3.1 Test instrument

VSWR is tested using Agilent E5071B connected to a hand mechanism, and the status is free space.

#### 3.2 Test environment and methods

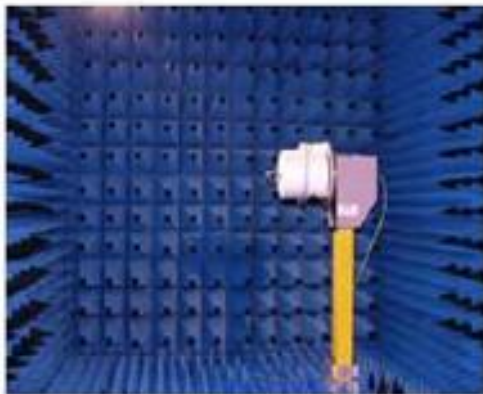
Dark room specifications: ETS-743

TD-SCDMA test equipment: StarPoint SP6010/Agilent 8960

LTE-TDD/FDD-SCDMA test equipment: StarPoint SP8011/CMW500

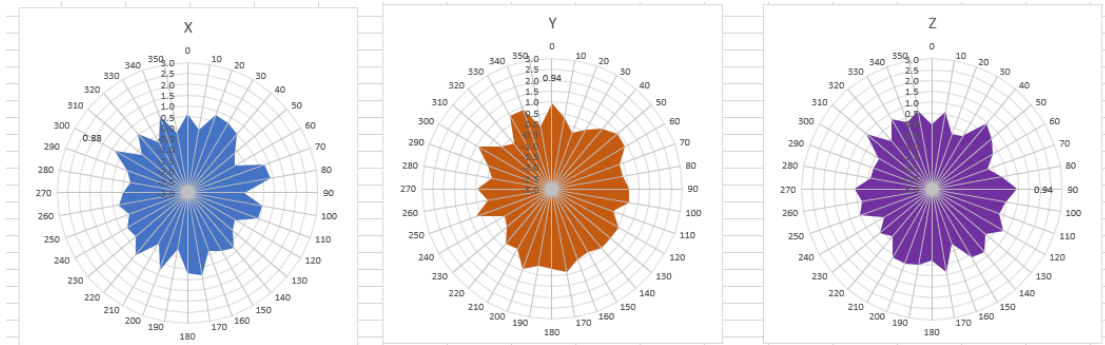
WCDMA/GSM/CDMA test equipment: Agilent 8960

Passive efficiency testing equipment: Agilent Technologies E5071B

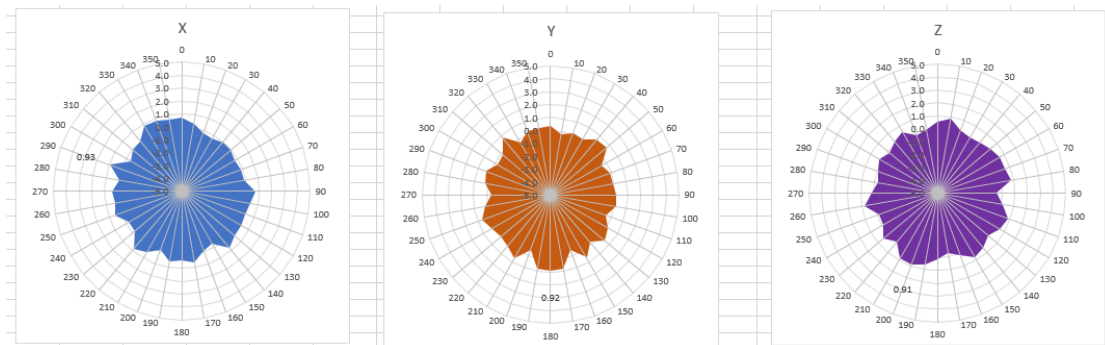


### 4 . Antenna Radiation Pattern

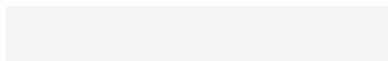
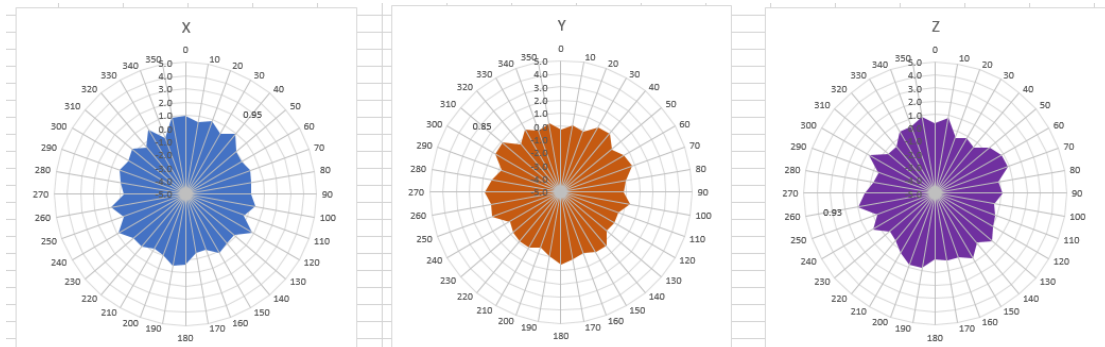
# 5180MHz



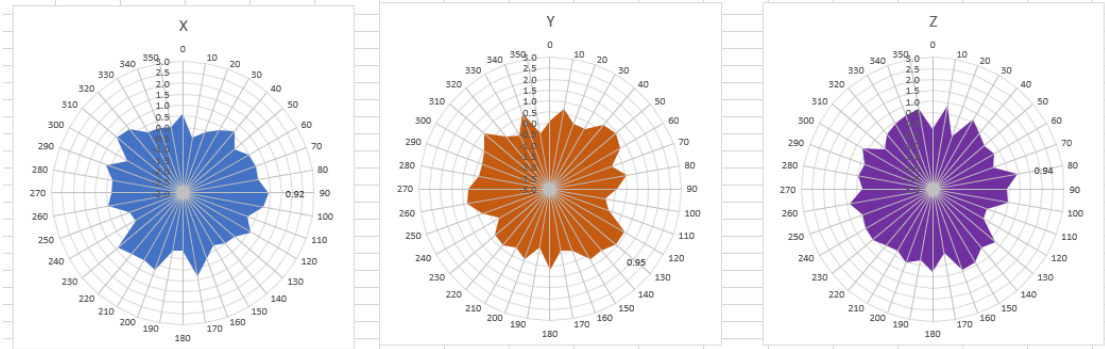
# 5220MHz



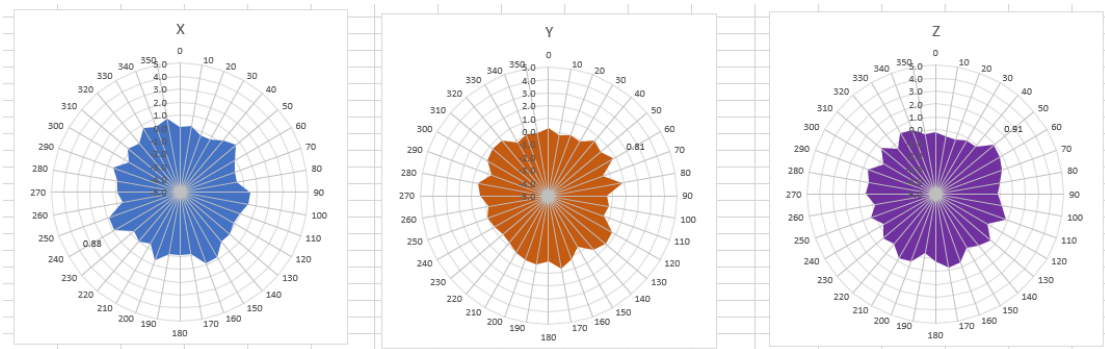
# 5240MHz



# 5745MHz



# 5785MHz



# 5825MHz

