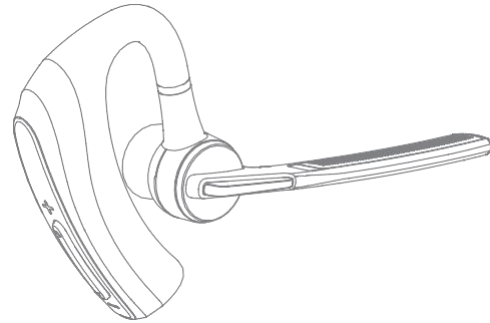


Size: 360*91mm

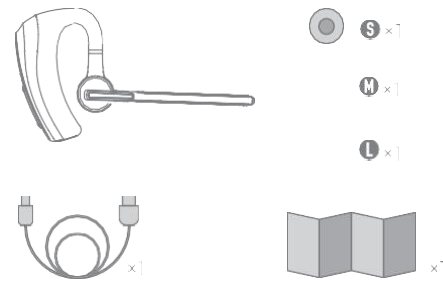
Vogek Wireless Headphone User Manual



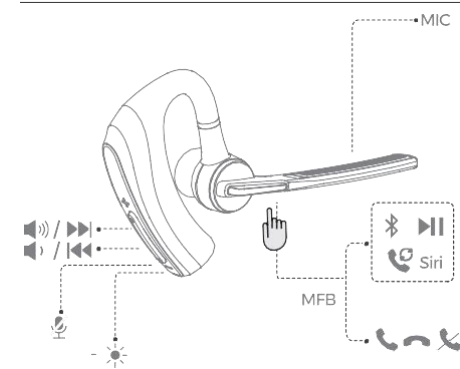
User Manual

We are appreciated for purchasing our wireless headset. This guide contains instructions for setting up and using your headset easily.

Package List



Diagram



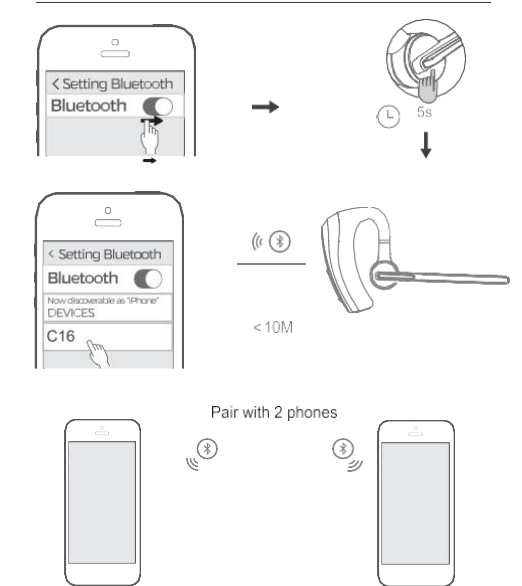
Specification

- 1.Operation Range: 10m
 - 2.Talking Time: Up to 15Hours
 - 3.Playing Time: Up to 15 Hours
 - 4.Charging Time: Up to 1.5 Hours
 - 5.Charging Voltage: DC 5V
 - 6.Battery Capacity: 3.7V / 110mAh
- Note: The actual time may vary from mobile phone types and functions.

Operation Guide

Button	Function	Operation
MFB	Power on	In off status ,Long press it for 5 seconds MFB to power on
	Power off	In on status ,Long press it for 5 seconds MFB to power on
	Enter to pairing mode	In off status ,Long press it for 5 seconds MFB to power on
	Play/Pause	short press when play music
	Redial a call	Double press it to Redial Last Phone Number when connected
	Voice Control	Press it for 2s while the headset is in standby status
	Answer a call	short press (when call coming)
	Reject a call	short press it during a calls (when call coming)
	Volume up	short press
	Volume +	Next song
Volume -	Volume down	short press
	Previous song	Long press it for 1 seconds
	Mute the mic	Double press it to mute the mic.

How To Pair



Pairing & Connection

1.Enter pairing mode

In off status ,Long press MFB for 5 seconds to enter pairing mode when you at first time, the blue and red indicator flashes alternately and you will hear voice prompt"pairing".

2.Connect your phone

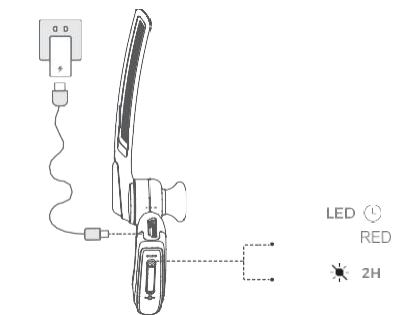
- 1) Turn on the headset and enter pairing mode(the headset indicator flashes red and blue alternately), Put on your headset and will hear "pairing" .
- 2) Put your cell phone in Bluetooth Search/Scan Mode.
- 3) Select "C16" to pair. (Password is "0000" if needed.)
- 4) When connected, you will hear a voice prompt "connected"and the blue indicator will flash once.

3.Bluetooth Connection with Two Mobile Phones

- 1) Pair the Bluetooth headset to the first phone.
- 2) After the successful pairing, turn off the headset and the Bluetooth function of the first phone;
- 3) Pair the Bluetooth headset to the second phone as the above steps.
- 4) After the successful pairing, turn on the Bluetooth function of the first phone, select "C16" to connect;
- 5) The above operations are successful, two phones will both be connected to the headset at the same time.

Headphone Charging

Output : DC 5V



This headphone is equipped with built-in non-detachable and rechargeable lithium battery. Please make sure that the battery is charged fully for the first time.

- 1.Connect the charger to the charging port.
- 2.Insert the charger into the standard power outlet. Red indicator light will be on when charged.
- 3.After the full charging, the red indicator light will be off and the blue indicator will be on.Please unplug the USB charging cable from the power outlet and headset.

Troubleshooting

1.The mobile phone can not find the headset

1) Possible Reasons:

- (1) The headset is not under ON and standby state;
- (2) The headset program is error;
- (3) The program of mobile phone is error.

2) Solutions:

- (1) Turn on the headset, hold the Multi-Function Button for 5s(red and blue indicator flashes alternately)to enable pairing status;
- (2) Recover the Wireless headset's default settings if the headset program is error.
- (3) After restart the mobile phone, remove all pairing data in the Wireless of the mobile phone.

3) Cautions:

- (1)After the Wireless headset has entered in the pairing mode, it will connect within 2mins, other wise the headset will automatically turn off.
- (2) When charging, hold the Multi-Function Button for 4s till the blue indicator flashes to recover default setting.

2.Charging red indicator doesn't light on

1) Possible Reasons:

The headset has not been used for a long period.

2) Solutions:

Charge headset for 30mins, then the red indicator may light on.

3) Cautions:

It will drop the capacity and service life of the battery if it is over charged or the Wireless headset is stored in the environment such as closed car.

3.No sound from the headset

1) Possible Reasons:

- (1) The volume of the mobile phone is unsuitable;
- (2) The Wireless headset and mobile phone are not connected correctly;
- (3) The Wireless headset is out of the working range.

2) Solutions:

- (1) Adjust the volume in the mobile phone;
- (2) Operate with the reference of the use steps;
- (3) Keep the headset in the range of 10m to the mobile phone without any obstacle.

3) Cautions:

- (1) Do not have any other operation when searching
- (2)headset for avoiding program error;
- (3)Please use headset near the mobile phone to assure stable signal.

This device complies with Part 15 of the FCC Rules. Operation is subject to the following two conditions: (1) this device may not cause harmful interference, and (2) this device must accept any interference received, including interference that may cause undesired operation

NOTE: This equipment has been tested and found to comply with the limits for a Class B digital device, pursuant to Part 15 of the FCC Rules. These limits are designed to provide reasonable protection against harmful interference in a residential installation. This equipment generates, uses and can radiate radio frequency energy and, if not installed and used in accordance with the instructions, may cause harmful interference to radio communications. However, there is no guarantee that interference will not occur in a particular installation.

If this equipment does cause harmful interference to radio or television reception, which can be determined by turning the equipment off and on, the user is encouraged to try to correct the interference by one or more of the following measures:

- Reorient or relocate the receiving antenna.
- Increase the separation between the equipment and receiver.
- Connect the equipment into an outlet on a circuit different from that to which the receiver is connected.
- Consult the dealer or an experienced radio/TV technician for help.

Warning: changes or modifications not expressly approved by the party responsible for compliance could void the user's authority to operate the equipment

RF warning for portable device:

The device has been evaluated to meet general RF exposure requirement. The device can be used in portable exposure condition without restriction.