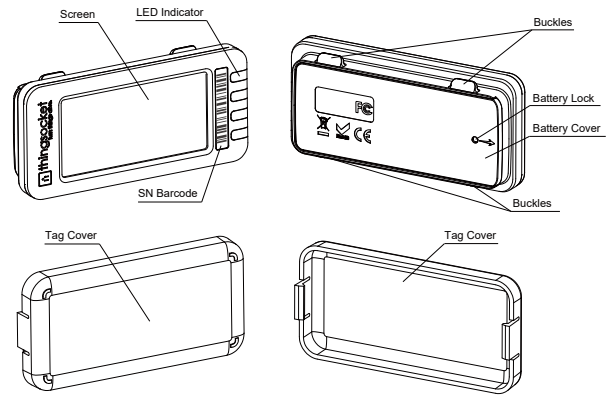


Product Summary



SN Barcode: Serial Number Barcode

Screen: Display information using E-ink

LED Indicator: LED Light with flashing

Tag Cover: Protector of Screen

Buckles: Attach Tags to the rails or other accessories

Battery Lock: Enable to open the Battery Cover

Battery Cover: Protect battery

Technical Parameter

Model	LT213CIII	Size	77x38x14.5±1mm	Weight	43±2g
Screen Type	Dot-matrix display	Resolution	250x122	Display Size	48x23mm
Display Color	Black/White/Red	LED Color	Red/Green/Yellow/Blue	Operation Temperature	10°C~35°C
Battery	CR2450*2 Battery	Frequency	2.402~2.482GHz	Storage Temperature	10°C~35°C
Battery Life	1~2 Years	Coverage	15~50m(Open Area)	FCC ID	0000-00000

* Battery life ≥ 2 years (Estimation: Refresh screen content 4 times per day without flashing light)

* Battery life ≥ 1-year (Estimation: Refresh screen content 4 times per day with 50 times LED flashing with 2Hz per day for 30 seconds each)

Remarks: Flashing duration (30 seconds) is configurable by software with unit "second".

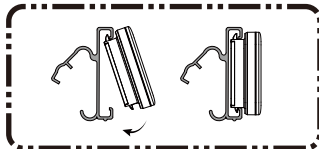


- 1 -

Installation & Removal

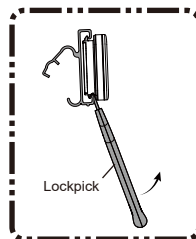
Installation Step:

1. Place the tag's upper buckle inside the upper rail
2. Place the tag's lower buckle inside the lower rail
3. Complete installation



Removal Step:

1. Insert the lockpick tip into the gap between the rail and the tag at the bottom
2. Flick the lockpick along the direction of arrow
3. The tag could be removed

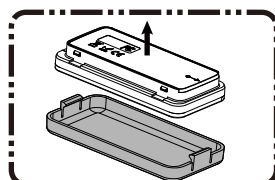
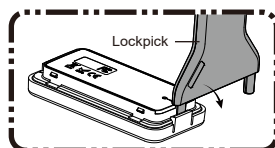


* Please note the lockpick is an optional product. Image shows is for illustration purposes only, actual product may have variation. Please refer to the actual product as final.

Cover Replacement

Cover Replacement Step:

1. Insert the lockpick into the gap between the cover and the tag
2. Flick the lockpick along the direction of arrow
3. Take off the cover
4. Replace with the new cover

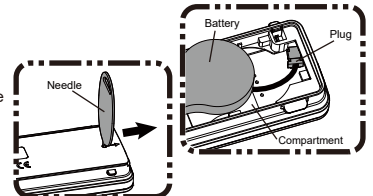


* The tag cover was installed before the shipping.

Replace Battery

Battery replacing method:

1. Insert the needle into the battery lock, then push the battery cover outward
2. Unplug and remove the battery
3. Replace a new battery and plug the cable
4. Replace a new battery in the compartment
5. Close the battery cover



Precautions

Notice	Warnings
<ul style="list-style-type: none"> The product should be installed more than two meters away from the anti-theft door system to avoid electromagnetic interference. Keep the tag clean and prevent from water, dust, corrosive liquids, and similar pollutant entering the tag. Storage time should be controlled within 6 months. Other redness or distortion would be found on the screen. Avoid placing the screen downward. Avoid any metal, shielding materials or liquid place between tags and base stations. 	<ul style="list-style-type: none"> Do not disassemble or modify this product. Avoid prolonged sun exposure. Avoid external impacts such as drops and collisions. It is forbidden to use the tag in harsh environments, such as high temperature, high humidity, strong magnetism, strong radiation or chemical corrosion etc. The tag must be used and stored within the specified temperature range, otherwise the screen may be damaged or battery of life would be shortened.

Troubleshooting

Failure	Possible Reason	Solution
Fail to refresh screen	Base station offline	Check the base station power supply and network connection
	Software abnormal	Restart the software
	Tag undetectable	Add base station or move the tag within the range
Display LOW POWER	Low battery	Replace with new batteries
Screen display confusion	Screen damage	Contact after-sales service
Screen display turns grey or LED turns dim	Low battery	Replace with new batteries

Remarks: If the tag failure cannot be solved, please contact the after-sales service team for support. The content may not be consistent with the actual products due to product enhancement or components change. Updates will not be further announced. Please refer to the actual product as final.

Packing Details

Tags	User Manual
200	1

FCC Warning Statement

Changes or modifications not expressly approved by the party responsible for compliance could void the user's authority to operate the equipment. This equipment has been tested and found to comply with the limits for a Class B digital device, pursuant to Part 15 of the FCC Rules. These limits are designed to provide reasonable protection against harmful interference in a residential installation. This equipment generates uses and can radiate radio frequency energy and, if not installed and used in accordance with the instructions, may cause harmful interference to radio communications. However, there is no guarantee that interference will not occur in a particular installation. If this equipment does cause harmful interference to radio or television reception, which can be determined by turning the equipment off and on, the user is encouraged to try to correct the interference by one or more of the following measures:

- Reorient or relocate the receiving antenna.
- Increase the separation between the equipment and receiver.
- Connect the equipment into an outlet on a circuit different from that to which the receiver is connected.
- Consult the dealer or an experienced radio/TV technician for help.