

# Antenna Specification

Product Model: Deco X75(US) 2.0

Version: 1.0

Manufacturer: \_\_\_\_\_

Date: \_\_\_\_\_

Checked By: \_\_\_\_\_

**TP-Link Corporation Limited**

Room 901, 9/F. , New East Ocean Centre,

9 Science Museum Road, Tsim Sha Tsui,

Kowloon, Hong Kong

TEL: 00852-37585503

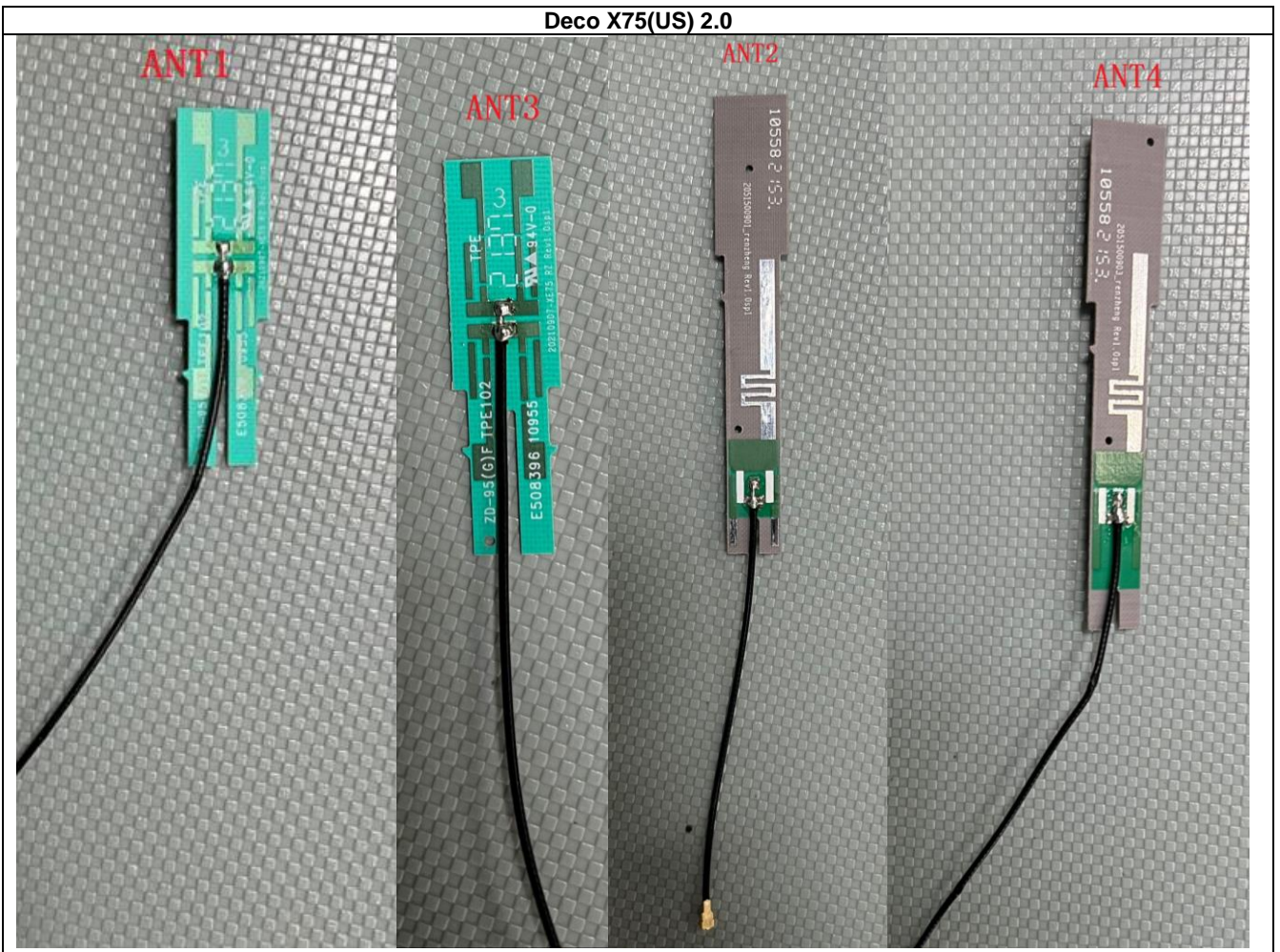
<http://www.tp-link.com/en>

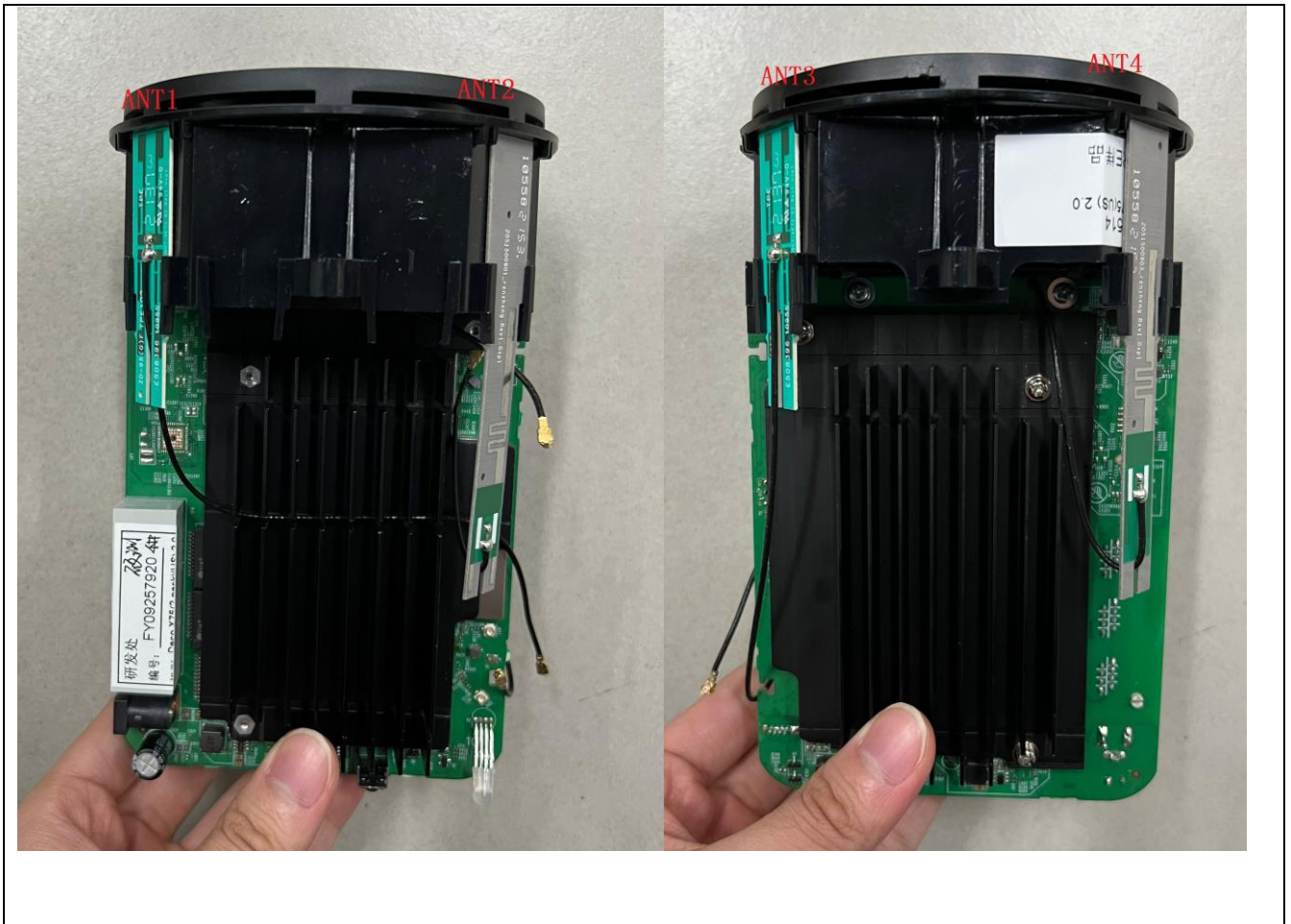
# Index

I. Antenna Distribution.....	3
II. Electrical Characteristics .....	4
III. Antenna Peak Gain.....	5
IV. Antenna Radiation Pattern .....	6

# I. Antenna Distribution

Deco X75(US) 2.0





## II. Electrical Characteristics

Ant1	
Frequency	2400~2500 & 5150~5850MHz
Impedance	50Ohm
Antenna Type	Dipole
Antenna Gain	1.95dBi@2400~2500MHz 0.92dBi@5150~5850MHz
Radiation pattern	Omni-Directional

Ant3	
Frequency	2400~2500 & 5150~5850MHz
Impedance	50Ohm
Antenna Type	Dipole
Antenna Gain	1.91dBi@2400~2500MHz 0.99dBi@5150~5850MHz
Radiation pattern	Omni-Directional

Ant2	
Frequency	5500~5850MHz
Impedance	50Ohm
Antenna Type	Dipole
Antenna Gain	0.94dBi@5500~5850MHz
Radiation pattern	Omni-Directional

<b>Ant4</b>	
<b>Frequency</b>	5500~5850MHz
<b>Impedance</b>	50Ohm
<b>Antenna Type</b>	Dipole
<b>Antenna Gain</b>	0.97dBi@5500~5850MHz
<b>Radiation pattern</b>	Omni-Directional

### III. Antenna Peak Gain

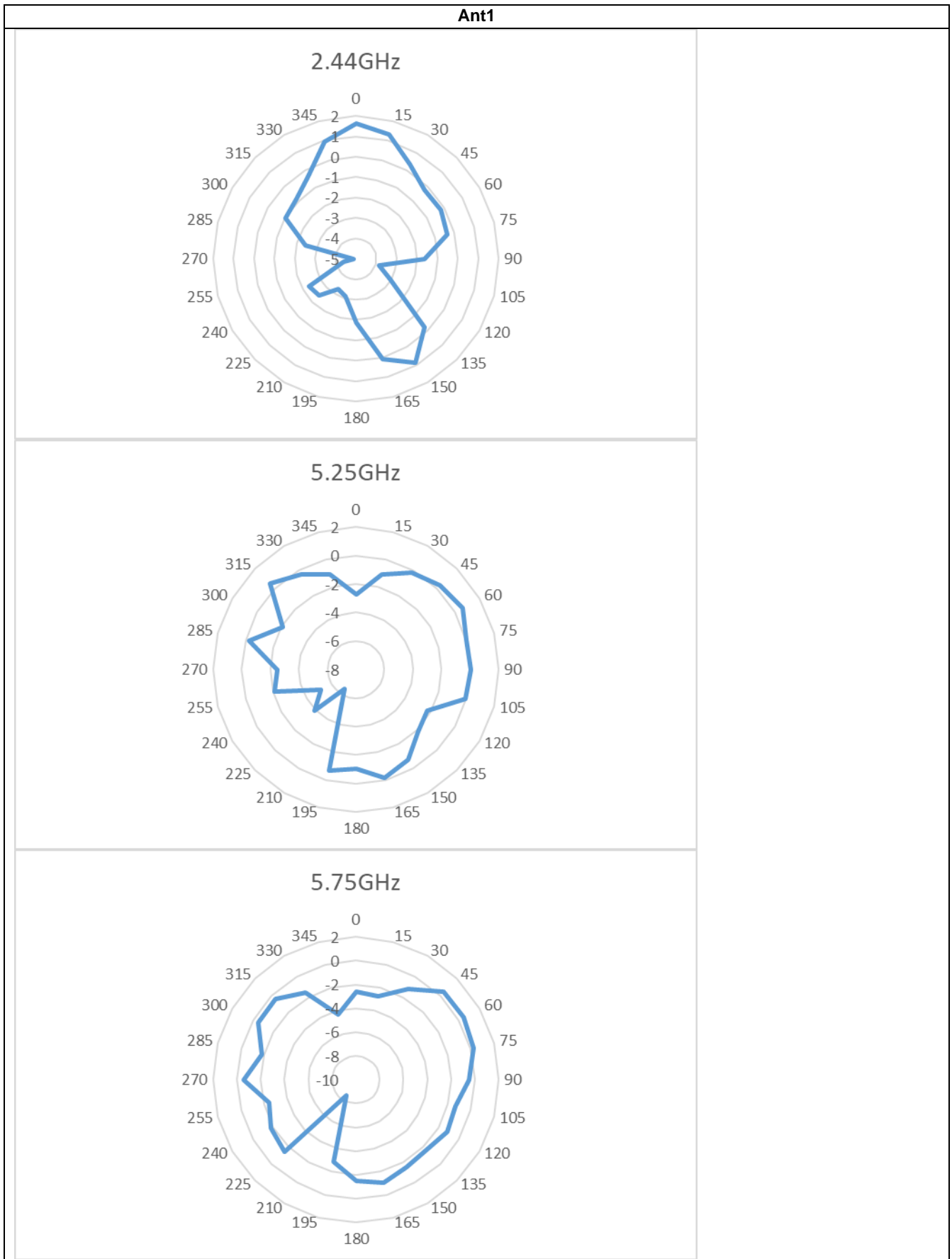
<b>Ant1</b>											
<b>Frequency(MHz)</b>	<b>2400</b>	<b>2410</b>	<b>2420</b>	<b>2430</b>	<b>2440</b>	<b>2450</b>	<b>2460</b>	<b>2470</b>	<b>2480</b>	<b>2490</b>	<b>2500</b>
<b>Gain(dBi)</b>	1.37	1.56	1.68	1.78	1.80	1.79	1.80	1.81	1.81	1.90	1.95
<b>Frequency(MHz)</b>	<b>5150</b>	<b>5200</b>	<b>5250</b>	<b>5300</b>	<b>5350</b>	<b>5400</b>	<b>5450</b>	<b>5500</b>	<b>5550</b>	<b>5600</b>	<b>5650</b>
<b>Gain(dBi)</b>	0.58	0.63	0.70	0.73	0.88	0.92	0.85	0.67	0.61	0.53	0.53
<b>Frequency(MHz)</b>	<b>5700</b>	<b>5750</b>	<b>5800</b>	<b>5850</b>							
<b>Gain(dBi)</b>	0.68	0.73	0.83	0.68							

<b>Ant3</b>											
<b>Frequency(MHz)</b>	<b>2400</b>	<b>2410</b>	<b>2420</b>	<b>2430</b>	<b>2440</b>	<b>2450</b>	<b>2460</b>	<b>2470</b>	<b>2480</b>	<b>2490</b>	<b>2500</b>
<b>Gain(dBi)</b>	1.81	1.82	1.73	1.69	1.75	1.72	1.71	1.75	1.82	1.91	1.83
<b>Frequency(MHz)</b>	<b>5150</b>	<b>5200</b>	<b>5250</b>	<b>5300</b>	<b>5350</b>	<b>5400</b>	<b>5450</b>	<b>5500</b>	<b>5550</b>	<b>5600</b>	<b>5650</b>
<b>Gain(dBi)</b>	0.71	0.82	0.84	0.87	0.72	0.78	0.81	0.96	0.99	0.91	0.81
<b>Frequency(MHz)</b>	<b>5700</b>	<b>5750</b>	<b>5800</b>	<b>5850</b>							
<b>Gain(dBi)</b>	0.93	0.88	0.81	0.88							

<b>Ant2</b>								
<b>Frequency(MHz)</b>	<b>5500</b>	<b>5550</b>	<b>5600</b>	<b>5650</b>	<b>5700</b>	<b>5750</b>	<b>5800</b>	<b>5850</b>
<b>Gain(dBi)</b>	0.88	0.94	0.85	0.83	0.79	0.85	0.86	0.77

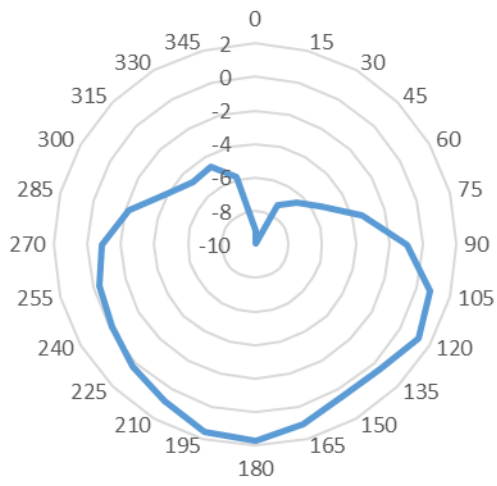
<b>Ant4</b>								
<b>Frequency(MHz)</b>	<b>5500</b>	<b>5550</b>	<b>5600</b>	<b>5650</b>	<b>5700</b>	<b>5750</b>	<b>5800</b>	<b>5850</b>
<b>Gain(dBi)</b>	0.82	0.87	0.93	0.97	0.86	0.81	0.78	0.76

# IV. Antenna Radiation Pattern

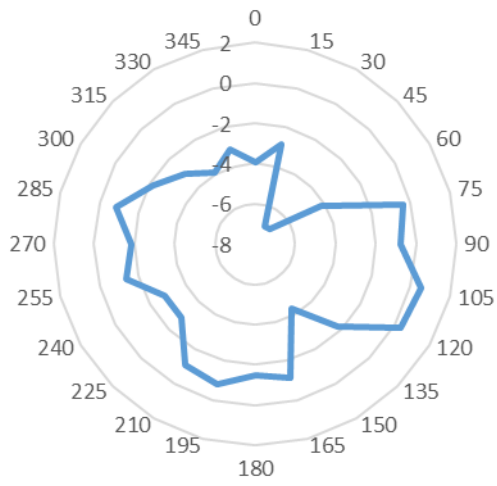


**Ant3**

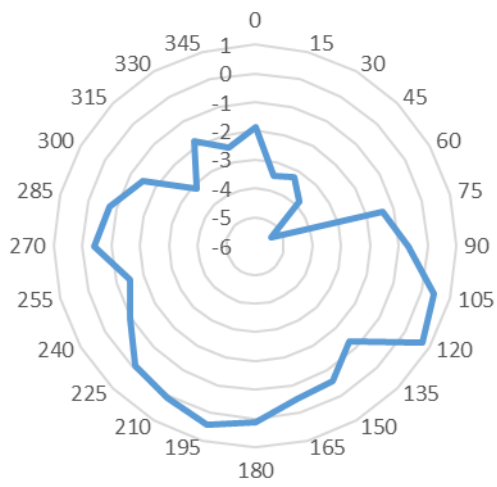
2.44GHz



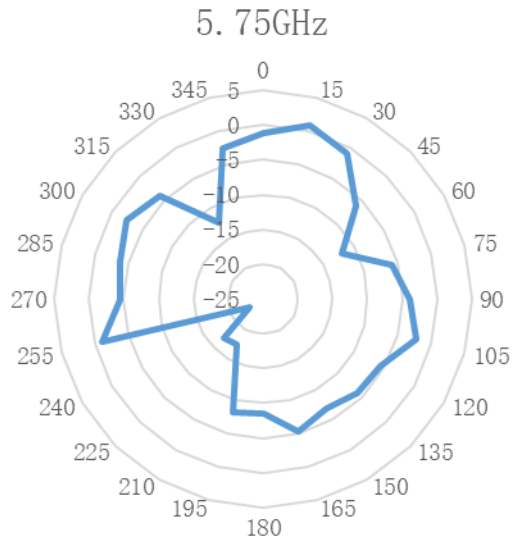
5.25GHz



5.75GHz



**Ant2**



**Ant4**

