

TP-LINK®

Antenna Specification





Specification For Approval

Date: _____
Version: 1.0

Product Model: Deco X55 Pro

Manufacturer: TP-Link INTERNATIONAL SHENZHEN CO., LTD

Address: 5/F, Fully Best Building, No.1 Kefa Road, High-Tech Industry
Park, Nanshan District, ShenZhen,P.R.China

COPYRIGHT & TRADEMARKS

Specifications are subject to change without notice. **TP-LINK®** is a registered trademark of TP-LINK TECHNOLOGIES CO., LTD. Other brands and product names are trademarks or registered trademarks of their respective holders.

No part of the specifications may be reproduced in any form or by any means or used to make any derivative such as translation, transformation, or adaptation without permission from TP-LINK TECHNOLOGIES CO., LTD. Copyright © 2011 TP-LINK TECHNOLOGIES CO., LTD. All rights reserved.

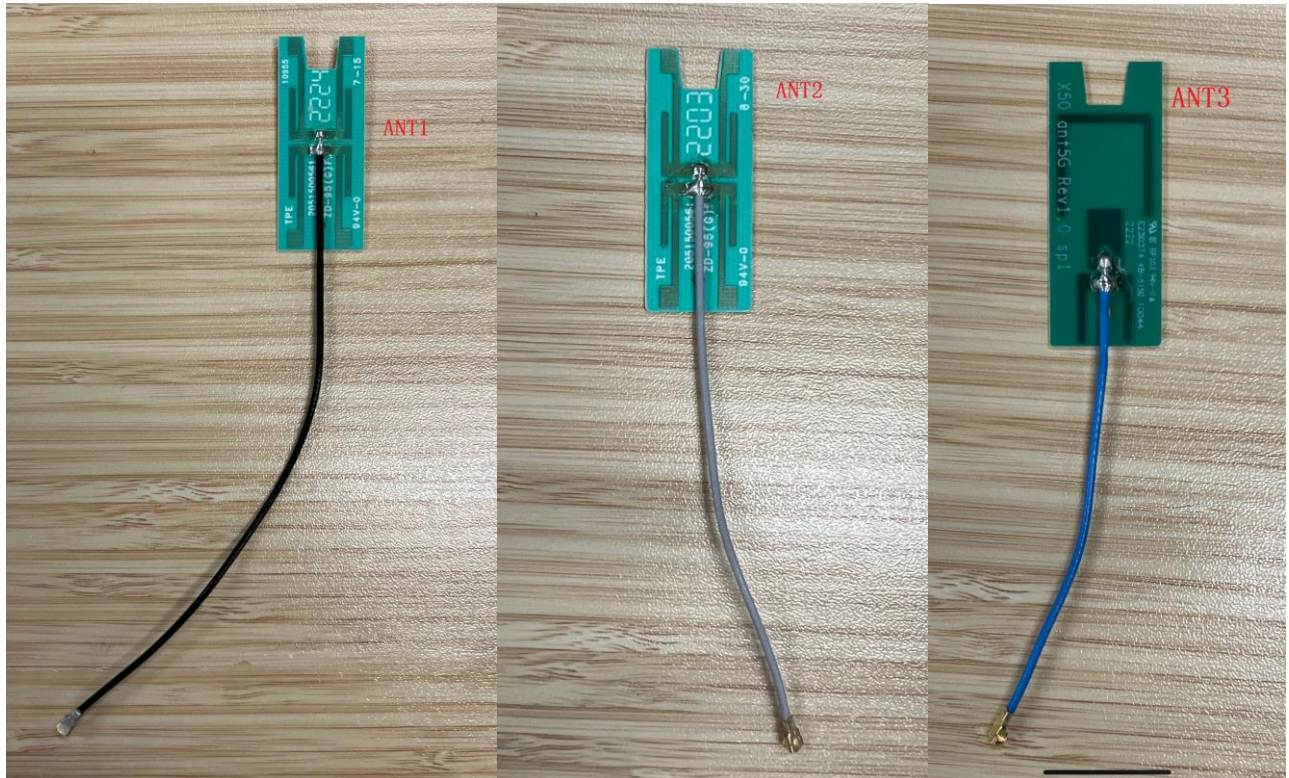
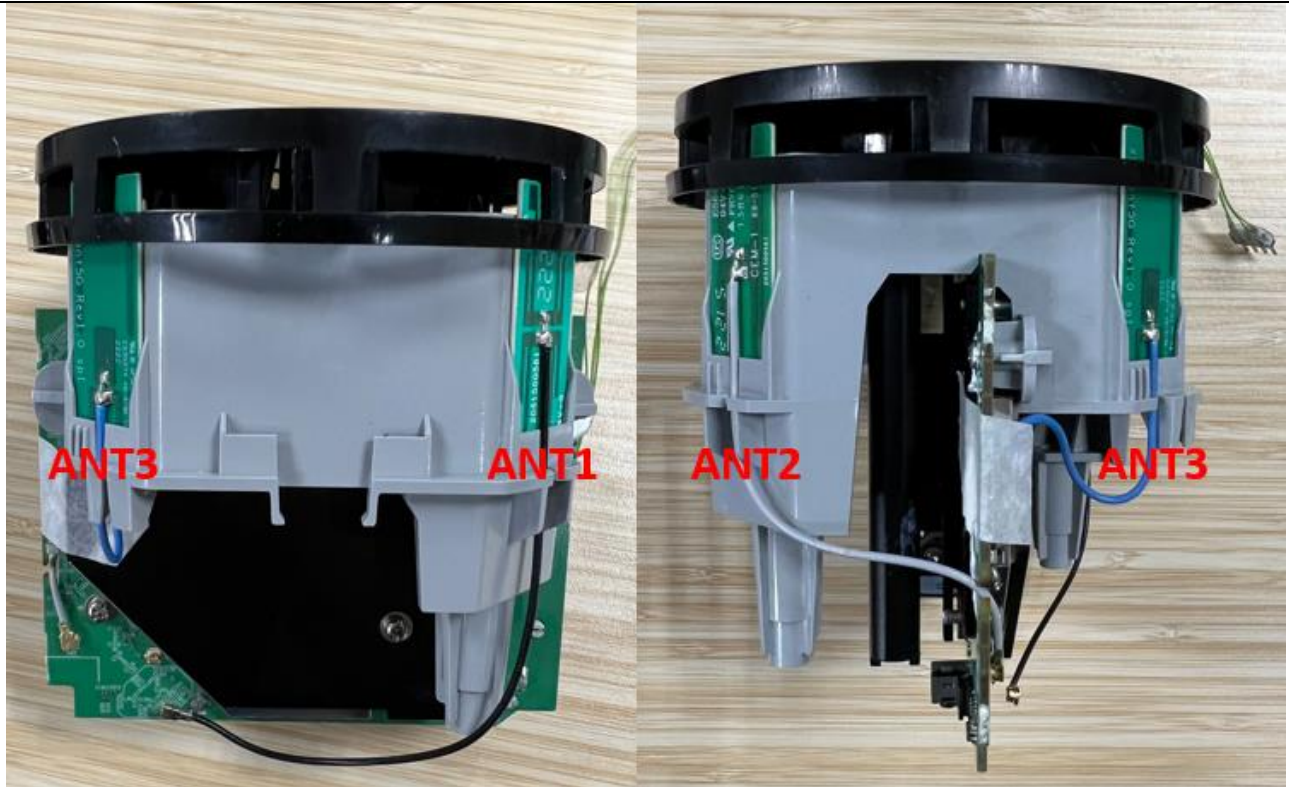
<http://www.tp-link.com>

Index

I.	Antenna Distribution.....	4
II.	Electrical Characteristics	4
III.	Antenna Peak Gain.....	5
IV.	Antenna Radiation Pattern	6

I. Antenna Distribution

Deco X55 Pro



II. Electrical Characteristics

Ant1	
Frequency	2400~2500 & 5150~5850MHz
Impedance	50Ohm

Antenna Type	Dipole
Antenna Gain	1.95dBi@2400~2500MHz 0.92dBi@5150~5850MHz
Radiation pattern	Omni-Directional

Ant2	
Frequency	2400~2500 &5150~5850MHz
Impedance	50Ohm
Antenna Type	Dipole
Antenna Gain	1.91dBi@2400~2500MHz 0.99dBi@5150~5850MHz
Radiation pattern	Omni-Directional

Ant3	
Frequency	5150~5850MHz
Impedance	50Ohm
Antenna Type	Dipole
Antenna Gain	0.94dBi@5150~5850MHz
Radiation pattern	Omni-Directional

III. Antenna Peak Gain

Ant1											
Frequency(MHz)	2400	2410	2420	2430	2440	2450	2460	2470	2480	2490	2500
Gain(dBi)	1.37	1.56	1.68	1.78	1.80	1.79	1.80	1.81	1.81	1.90	1.95
Frequency(MHz)	5150	5200	5250	5300	5350	5400	5450	5500	5550	5600	5650
Gain(dBi)	0.58	0.63	0.70	0.73	0.88	0.92	0.85	0.67	0.61	0.53	0.53
Frequency(MHz)	5700	5750	5800	5850							
Gain(dBi)	0.68	0.73	0.83	0.68							

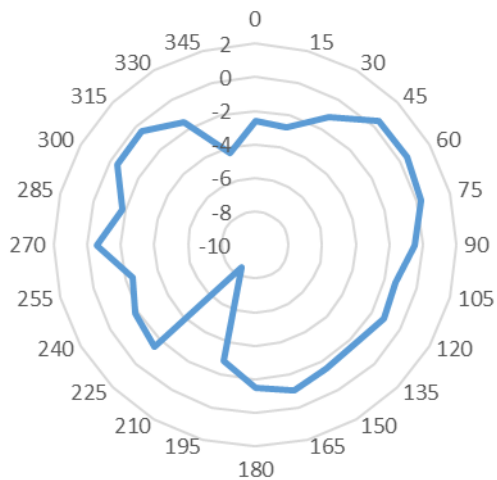
Ant2											
Frequency(MHz)	2400	2410	2420	2430	2440	2450	2460	2470	2480	2490	2500
Gain(dBi)	1.81	1.82	1.73	1.69	1.75	1.72	1.71	1.75	1.82	1.91	1.83
Frequency(MHz)	5150	5200	5250	5300	5350	5400	5450	5500	5550	5600	5650
Gain(dBi)	0.71	0.82	0.84	0.87	0.72	0.78	0.81	0.96	0.99	0.91	0.81
Frequency(MHz)	5700	5750	5800	5850							
Gain(dBi)	0.93	0.88	0.81	0.88							

Ant3											
Frequency(MHz)	5150	5200	5250	5300	5350	5400	5450	5500	5550	5600	5650
Gain(dBi)	0.88	0.94	0.85	0.83	0.79	0.85	0.86	0.77	0.72	0.71	0.76
Frequency(MHz)	5700	5750	5800	5850							
Gain(dBi)	0.77	0.82	0.87	0.75							

IV. Antenna Radiation Pattern

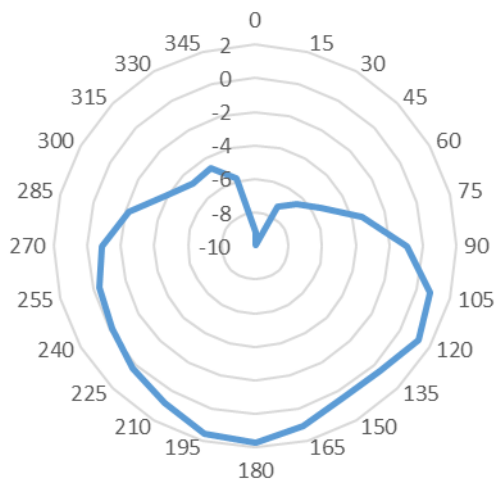


5.75GHz



Ant2

2.44GHz



5.25GHz

