

TP-LINK®

Antenna Specification



Product Number: EAP225 5.0

Product Name: Antenna

TP-LINK®

COPYRIGHT & TRADEMARKS

Specifications are subject to change without notice. **TP-LINK®** is a registered trademark of TP-LINK TECHNOLOGIES CO., LTD. Other brands and product names are trademarks or registered trademarks of their respective holders.

No part of the specifications may be reproduced in any form or by any means or used to make any derivative such as translation, transformation, or adaptation without permission from TP-LINK TECHNOLOGIES CO., LTD. Copyright © 2011 TP-LINK TECHNOLOGIES CO., LTD. All rights reserved.

<http://www.tp-link.com>

Product Number: EAP225 5.0

Product Name: Antenna

TP-LINK®

Specification For Approval

Date: _____

File No. : _____

Version: 1.0

Customer: _____ / _____

Customer P/N : _____ / _____

TP-LINK P/N: EAP225 5.0

Description:

TP-LINK Checked By:
Customer Approved By:

TP-LINK®

TP-LINK TECHNOLOGIES CO., LTD.

South Buiding, No.5 Keyuan Road,
Central Zone, Science&Technology Park,
Nanshan, Shenzhen, P.R.China

TEL: + 86 755 26612350

+ 86 755 26504400

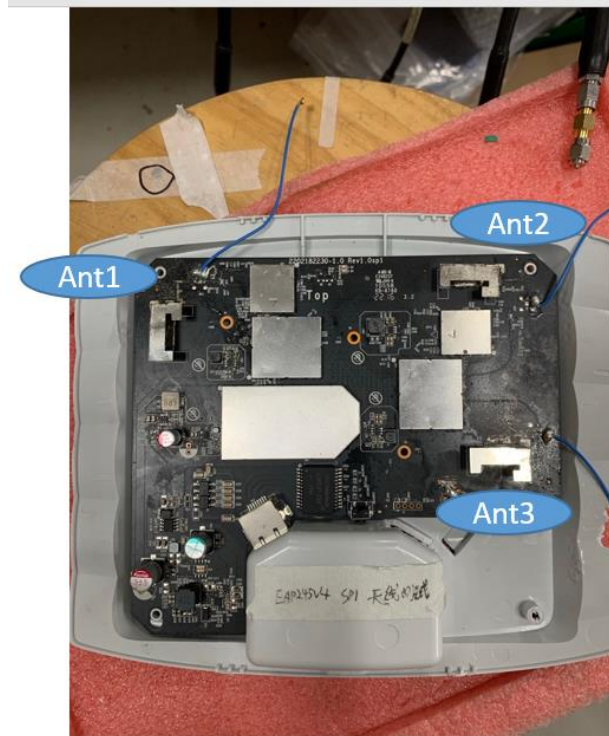
[http:// www.tp-link.com](http://www.tp-link.com)

Index

I.	Specification	2
II.	Mechanical Drawing and Material Description	错误!未定义书签。
III.	meter Test Data	3
IV.	Antenna – Radiation Pattern Test Da	5

I. Specification

Sample Photo



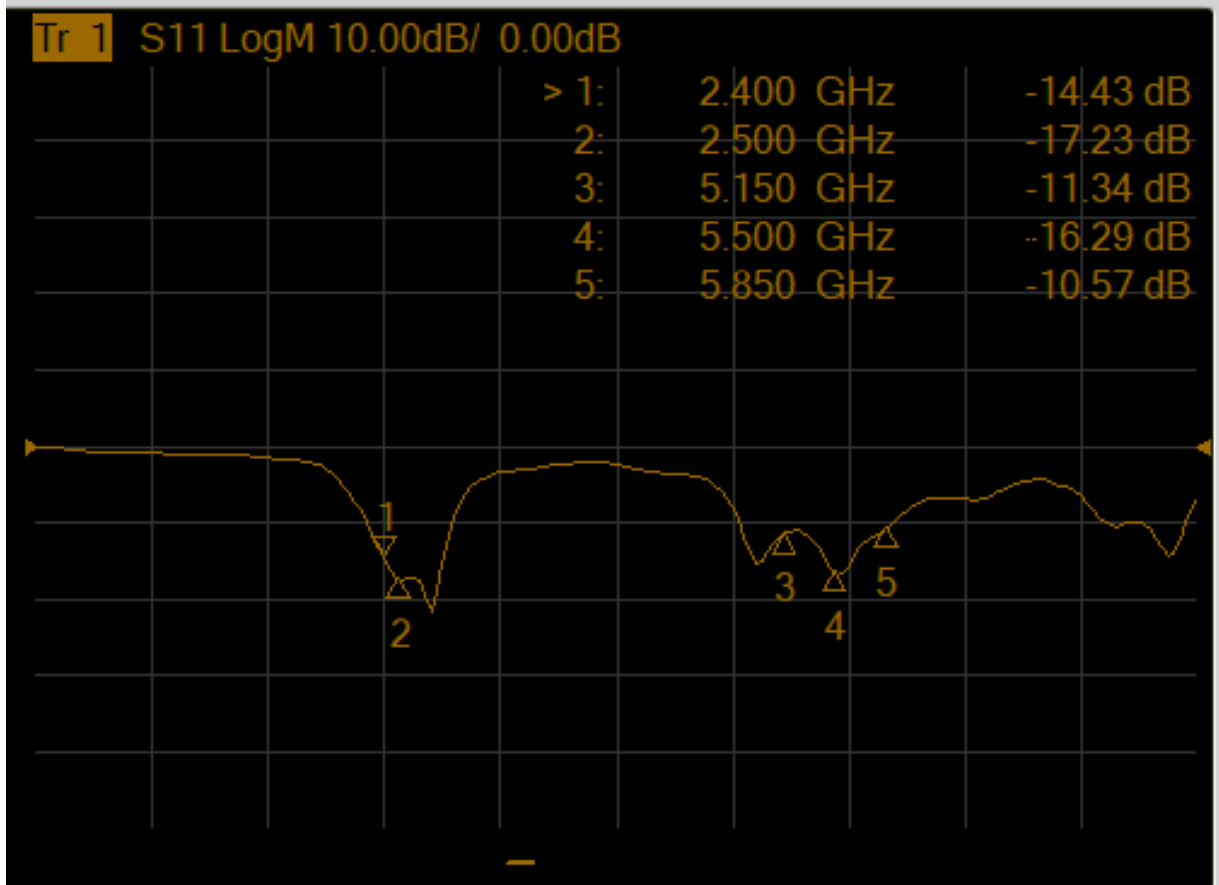
A. Electrical Characteristics

Frequency	2400 ~ 2500 MHz&5150~5850MHz
Impedance	50 Ohm
S.W.R.	≤ 2.0
Antenna Gain	2.0dBi(2400~2500MHz)&3.0dBi (5150~5850MHz)
Max Input Power	≤ 2 W
Polarization	Linear
Radiation pattern	Omni-Directional

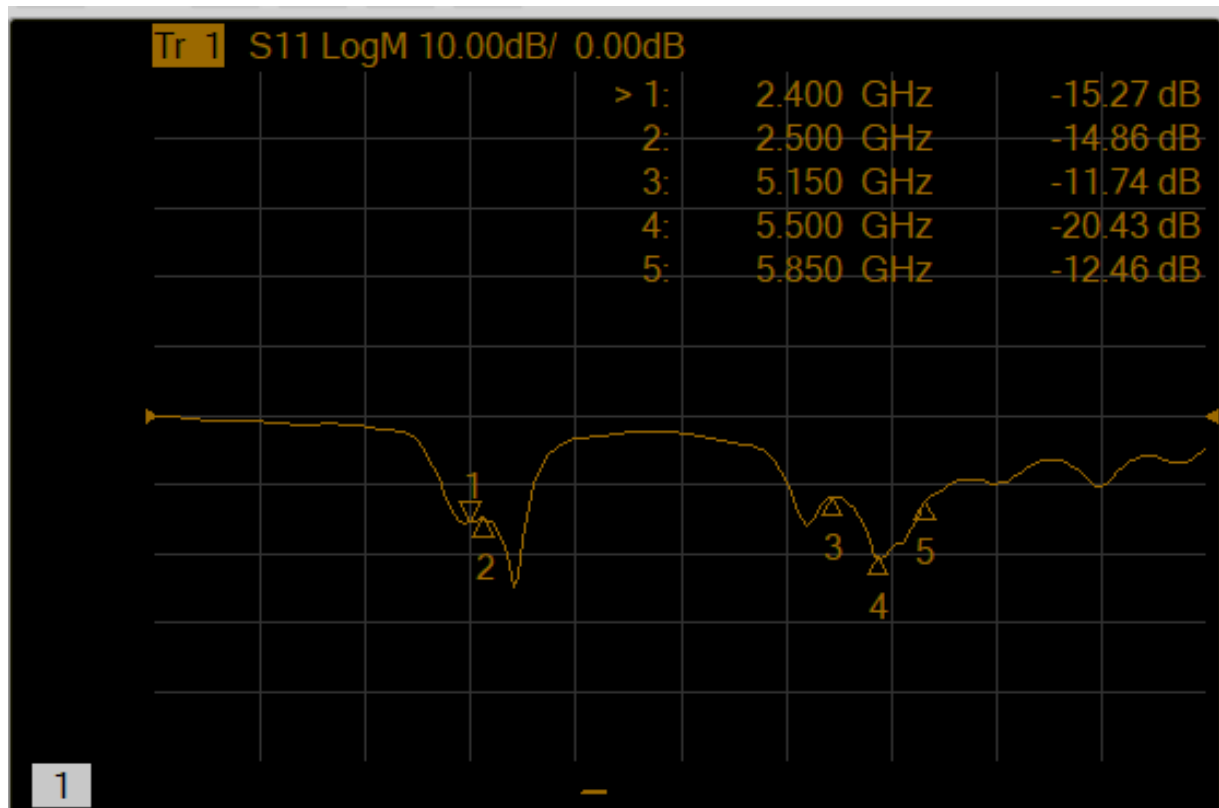
B. Material & Mechanical Characteristics

Material of Radiator	Cu
----------------------	----

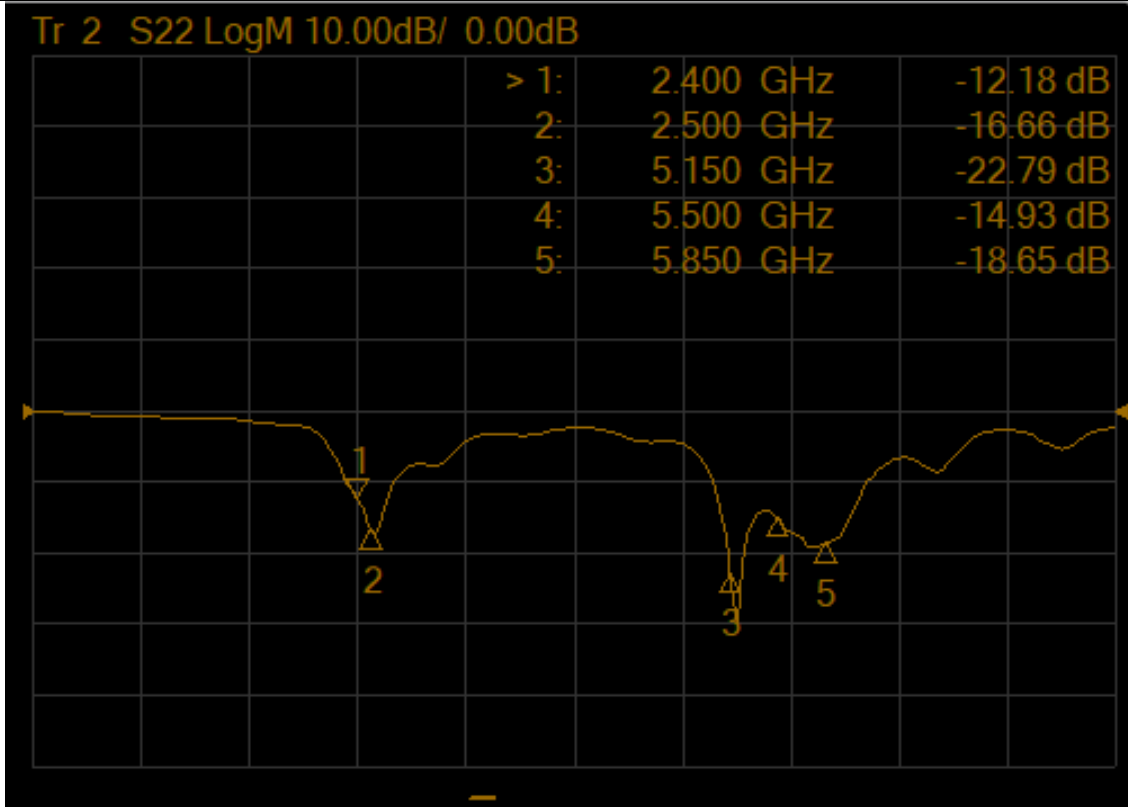
II. meter Test Data



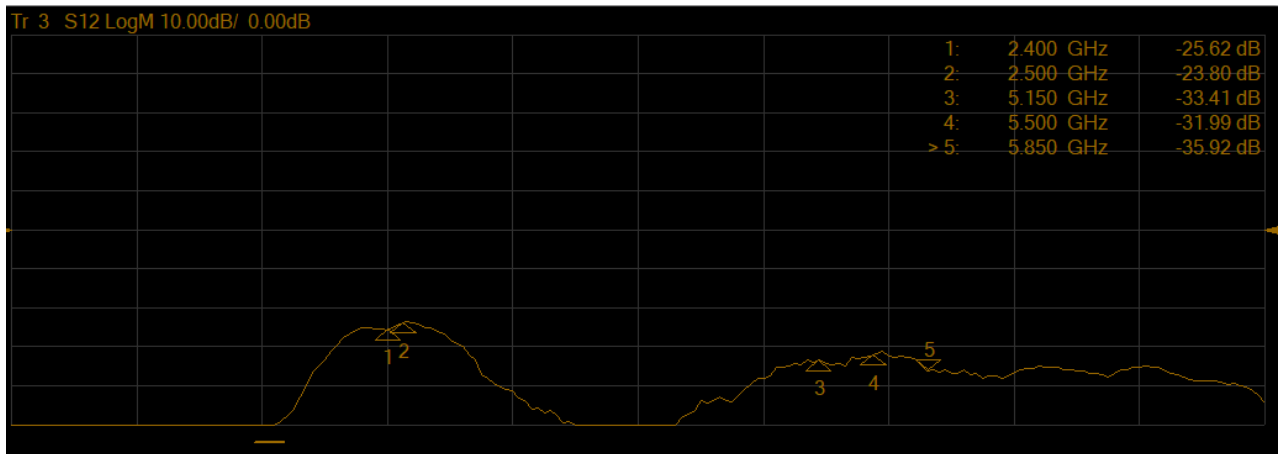
天线 1 回波损耗



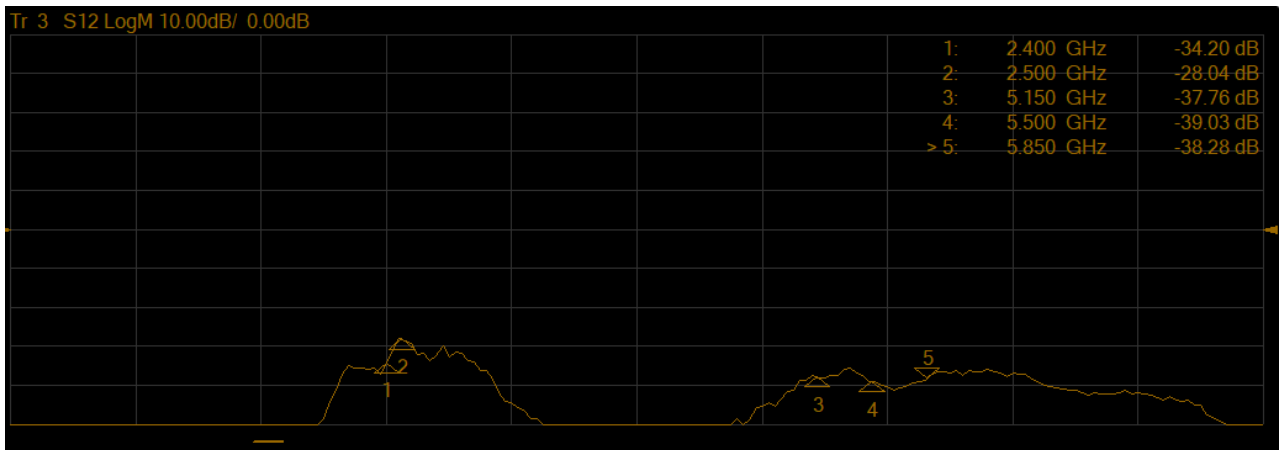
天线 2 回波损耗



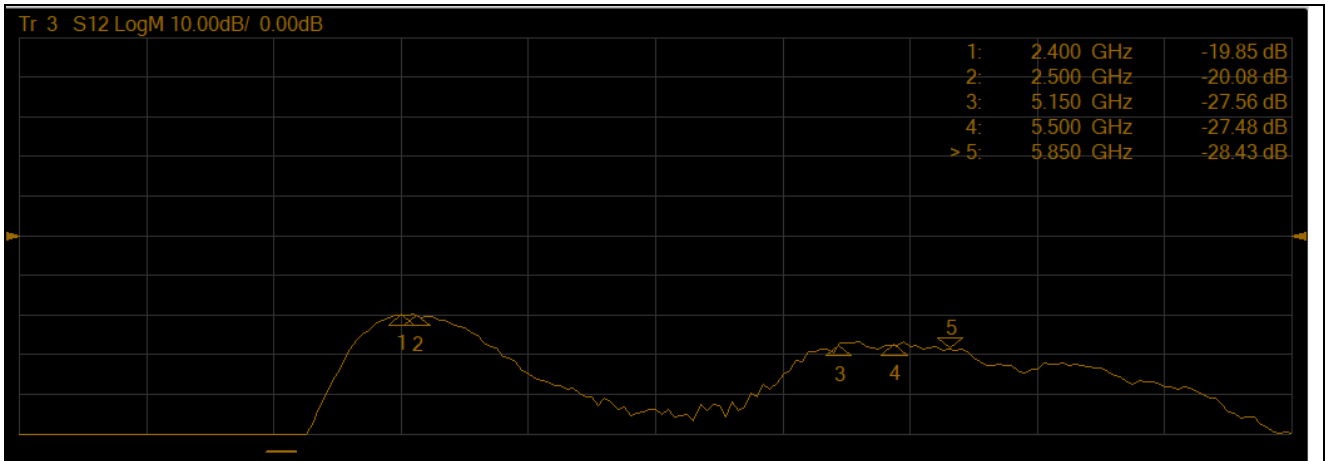
天线 3 回波损耗



天线 1 和天线 2 之间隔离度



天线 1 和天线 3 之间隔离度



天线 2 和天线 3 之间隔离度

III. Antenna – Radiation Pattern Test Da

Testing Equipment Specification	
Microwave Chamber	Satimo Starlab
Testing Equipment	Agilent E5071C

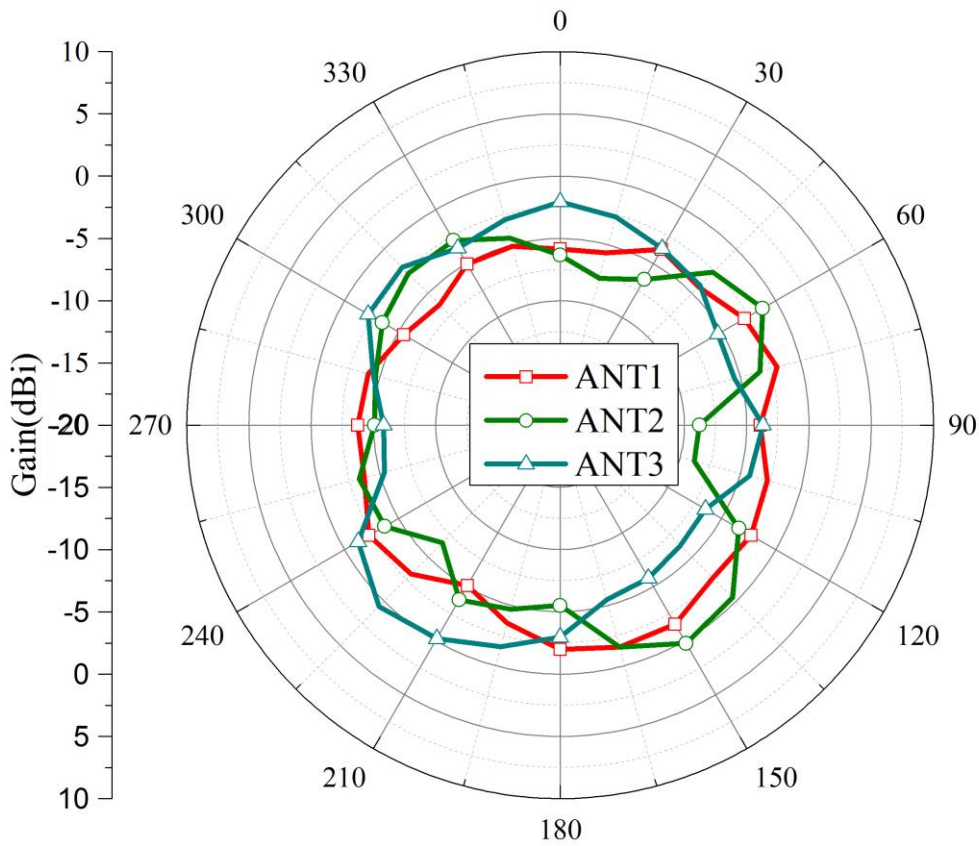
2400~2500 MHz

Peak Gain (dB)											
频率	2400	2410	2420	2430	2440	2450	2460	2470	2480	2490	2500
ANT1	0.8	0.87	0.88	1.02	1.16	1.28	1.47	1.56	1.6	1.68	1.7
ANT2	1.18	1.21	1.11	1.14	1.36	1.57	1.91	1.93	1.84	1.95	1.88
ANT3	1.6	1.66	1.68	1.83	1.86	2	1.96	1.92	1.99	1.87	1.93

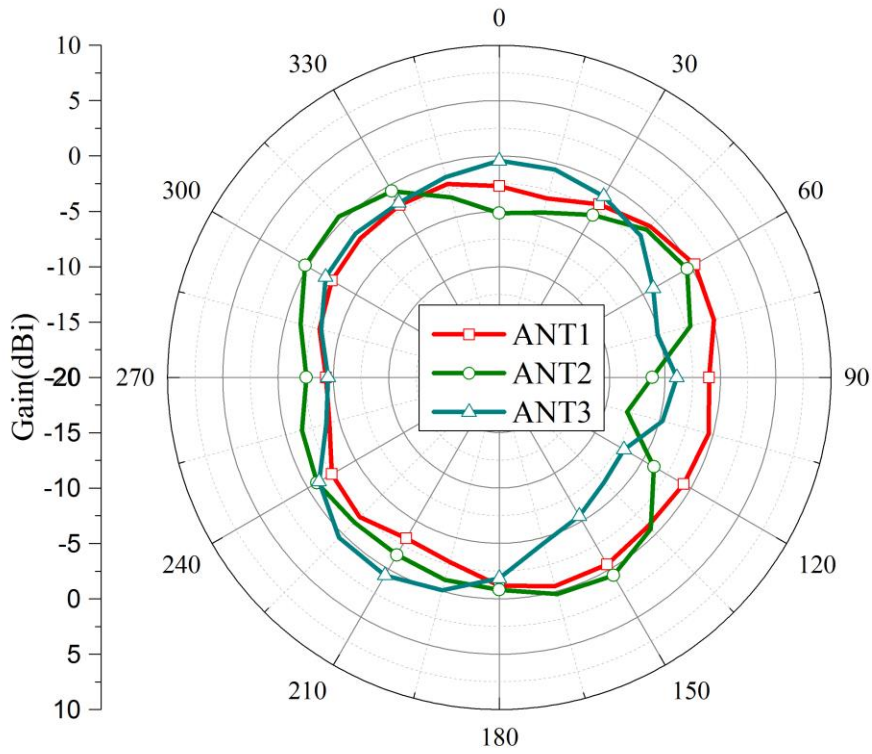
Peak Gain (dB)															
频率	5150	5200	5250	5300	5350	5400	5450	5500	5550	5600	5650	5700	5750	5800	5850
ANT1	1.79	1.6	1.64	1.62	1.93	1.9	2.05	2.01	2.04	2.1	1.63	1.8	1.94	2.06	1.8
ANT2	3	2.65	2.38	2.35	2.36	2.63	3	2.92	2.51	2.48	2.49	3	2.35	1.79	1.19

2450MHz:

Theta=90°

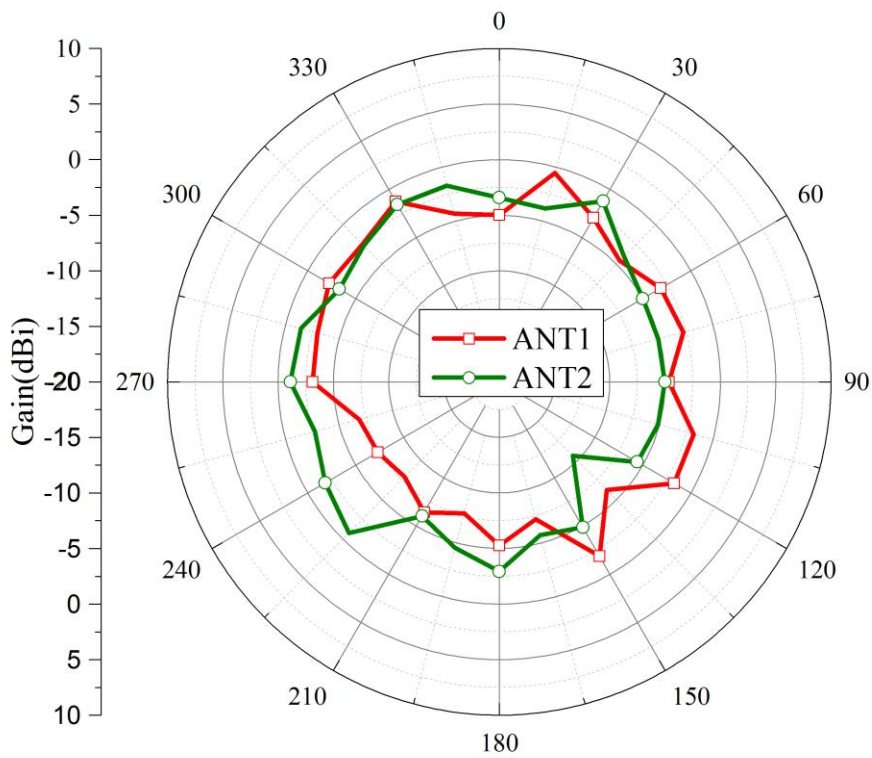


Theta=60°



5500MHz:

Theta=90°



Theta=60°

