

# Antenna Specification

Product Model: Deco BE95(US)1.0

Version: 1.0

Manufacturer: \_\_\_\_\_

Date: \_\_\_\_\_

Checked By: \_\_\_\_\_

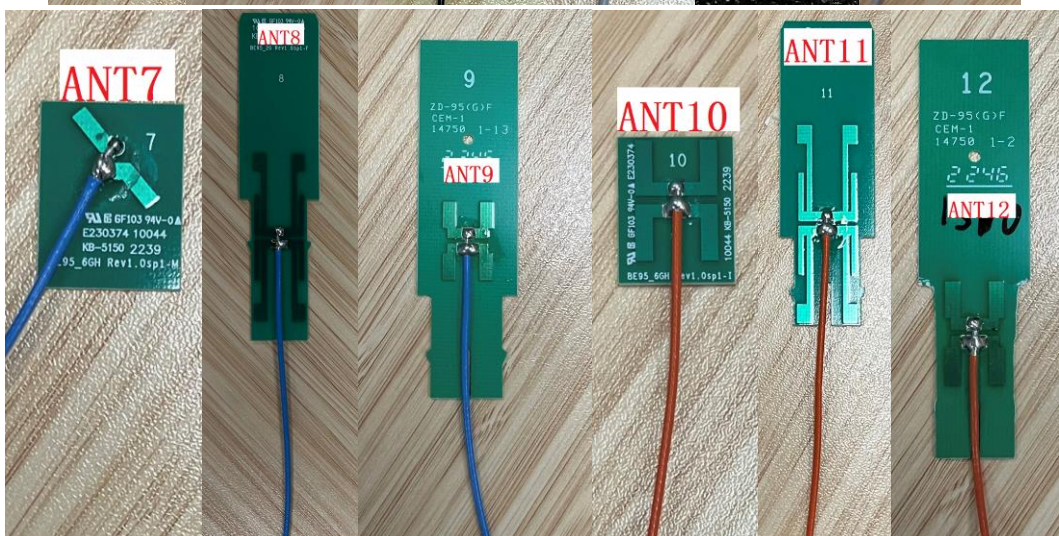
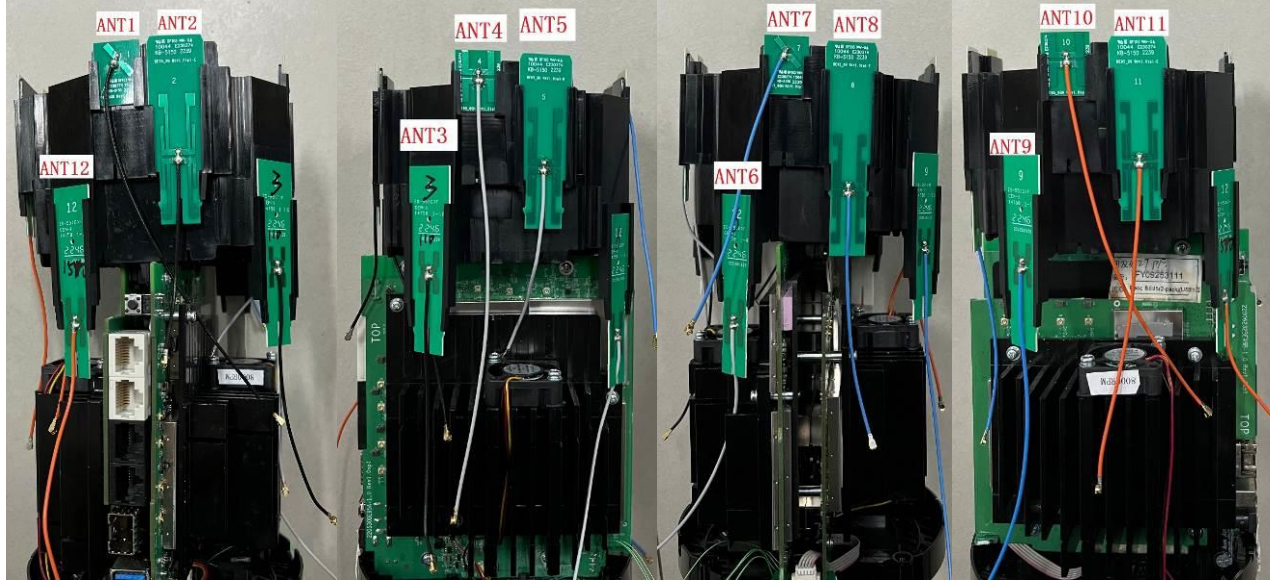
**TP-Link Corporation Limited**  
Room 901, 9/F. , New East Ocean Centre,  
9 Science Museum Road, Tsim Sha Tsui,  
Kowloon, Hong Kong  
TEL: 00852-37585503  
<http://www.tp-link.com/en>

# Index

I. Antenna Distribution.....	3
II. Electrical Characteristics .....	4
III. Antenna Peak Gain.....	6
IV. Antenna Radiation Pattern .....	7

# I. Antenna Distribution

Deco BE95(US)1.0



## II. Electrical Characteristics

<b>Ant1</b>	
<b>Frequency</b>	6745~7125MHz
<b>Impedance</b>	50Ohm
<b>Antenna Type</b>	Dipole
<b>Antenna Gain</b>	2.98dBi@6745~7125MHz
<b>Radiation pattern</b>	Omni-Directional

<b>Ant2</b>	
<b>Frequency</b>	2400 ~ 2500MHz & 5150 ~ 5850MHz
<b>Impedance</b>	50Ohm
<b>Antenna Type</b>	Dipole
<b>Antenna Gain</b>	1.9dBi@2400~2500MHz 2.59dBi@5150~5850MHz
<b>Radiation pattern</b>	Omni-Directional

<b>Ant3</b>	
<b>Frequency</b>	6105~6425MHz
<b>Impedance</b>	50Ohm
<b>Antenna Type</b>	Dipole
<b>Antenna Gain</b>	2.92dBi@6105~6425MHz
<b>Radiation pattern</b>	Omni-Directional

<b>Ant4</b>	
<b>Frequency</b>	6745~7125MHz
<b>Impedance</b>	50Ohm
<b>Antenna Type</b>	Dipole
<b>Antenna Gain</b>	2.61dBi@6745~7125MHz
<b>Radiation pattern</b>	Omni-Directional

<b>Ant5</b>	
<b>Frequency</b>	2400 ~ 2500MHz & 5150 ~ 5850MHz
<b>Impedance</b>	50Ohm
<b>Antenna Type</b>	Dipole
<b>Antenna Gain</b>	1.95dBi@2400~2500MHz 2.97dBi@5150~5850MHz
<b>Radiation pattern</b>	Omni-Directional

<b>Ant6</b>	
<b>Frequency</b>	6105~6425MHz
<b>Impedance</b>	50Ohm
<b>Antenna Type</b>	Dipole
<b>Antenna Gain</b>	2.94dBi@6105~6425MHz
<b>Radiation pattern</b>	Omni-Directional

<b>Ant7</b>	
<b>Frequency</b>	6745~7125MHz
<b>Impedance</b>	50Ohm

<b>Antenna Type</b>	Dipole
<b>Antenna Gain</b>	2.91dBi@6745~7125MHz
<b>Radiation pattern</b>	Omni-Directional

<b>Ant8</b>	
<b>Frequency</b>	2400 ~ 2500MHz & 5150 ~ 5850MHz
<b>Impedance</b>	50Ohm
<b>Antenna Type</b>	Dipole
<b>Antenna Gain</b>	1.96dBi@2400~2500MHz 2.83dBi@5150~5850MHz
<b>Radiation pattern</b>	Omni-Directional

<b>Ant9</b>	
<b>Frequency</b>	6105~6425MHz
<b>Impedance</b>	50Ohm
<b>Antenna Type</b>	Dipole
<b>Antenna Gain</b>	2.96dBi@6105~6425MHz
<b>Radiation pattern</b>	Omni-Directional

<b>Ant10</b>	
<b>Frequency</b>	6745~7125MHz
<b>Impedance</b>	50Ohm
<b>Antenna Type</b>	Dipole
<b>Antenna Gain</b>	2.53dBi@6745~7125MHz
<b>Radiation pattern</b>	Omni-Directional

<b>Ant11</b>	
<b>Frequency</b>	2400 ~ 2500MHz & 5150 ~ 5850MHz
<b>Impedance</b>	50Ohm
<b>Antenna Type</b>	Dipole
<b>Antenna Gain</b>	1.9dBi@2400~2500MHz 2.63dBi@5150~5850MHz
<b>Radiation pattern</b>	Omni-Directional

<b>Ant12</b>	
<b>Frequency</b>	6105~6425MHz
<b>Impedance</b>	50Ohm
<b>Antenna Type</b>	Dipole
<b>Antenna Gain</b>	2.74dBi@6105~6425MHz
<b>Radiation pattern</b>	Omni-Directional

### III. Antenna Peak Gain

Ant1											
Frequency(MHz)	6725	6775	6825	6875	6925	6975	7025	7075	7125		
Gain(dBi)	1.83	2.31	2.72	2.98	2.57	2.61	2.59	2.57	2.51		

Ant2											
Frequency(MHz)	2400	2410	2420	2430	2440	2450	2460	2470	2480	2490	2500
Gain(dBi)	1.11	1.68	1.9	1.86	1.8	1.76	1.7	1.71	1.69	1.59	1.4
Frequency(MHz)	5150	5200	5250	5300	5350	5400	5450	5500	5550	5600	5650
Gain(dBi)	2.59	2.56	2.39	2.5	2.38	2.54	2.09	1.32	1.55	2.1	2.33
Frequency(MHz)	5700	5750	5800	5850							
Gain(dBi)	1.72	2.05	2.33	2.18							

Ant3											
Frequency(MHz)	6075	6125	6175	6225	6275	6325	6375	6425			
Gain(dBi)	2.8	2.83	2.92	2.47	2.2	2.23	2.38	2.65			

Ant4											
Frequency(MHz)	6725	6775	6825	6875	6925	6975	7025	7075	7125		
Gain(dBi)	2.04	2.18	2.41	2.46	2.5	2.61	2.22	2.24	2.02		

Ant5											
Frequency(MHz)	2400	2410	2420	2430	2440	2450	2460	2470	2480	2490	2500
Gain(dBi)	1.95	1.86	1.45	1.03	0.89	1.03	1.21	1.38	1.47	1.47	1.54
Frequency(MHz)	5150	5200	5250	5300	5350	5400	5450	5500	5550	5600	5650
Gain(dBi)	1.86	2.48	2.27	1.73	1.87	2.07	1.84	1.46	2.32	2.08	2.3
Frequency(MHz)	5700	5750	5800	5850							
Gain(dBi)	2.41	2.83	2.97	2.51							

Ant6											
Frequency(MHz)	6075	6125	6175	6225	6275	6325	6375	6425			
Gain(dBi)	1.86	1.71	1.9	2	2.4	2.94	2.54	2.14			

Ant7											
Frequency(MHz)	6725	6775	6825	6875	6925	6975	7025	7075	7125		
Gain(dBi)	1.89	2.26	2.55	2.91	2.62	2.37	2.14	1.5	1.62		

Ant8											
Frequency(MHz)	2400	2410	2420	2430	2440	2450	2460	2470	2480	2490	2500
Gain(dBi)	1.93	1.96	1.81	1.63	1.53	1.53	1.67	1.74	1.78	1.76	1.76
Frequency(MHz)	5150	5200	5250	5300	5350	5400	5450	5500	5550	5600	5650
Gain(dBi)	1.86	2.1	2.32	1.77	1.87	1.56	2.17	2.83	2.71	1.92	1.81
Frequency(MHz)	5700	5750	5800	5850							

Gain(dBi)	1.97	2.25	1.67	1.17							
-----------	------	------	------	------	--	--	--	--	--	--	--

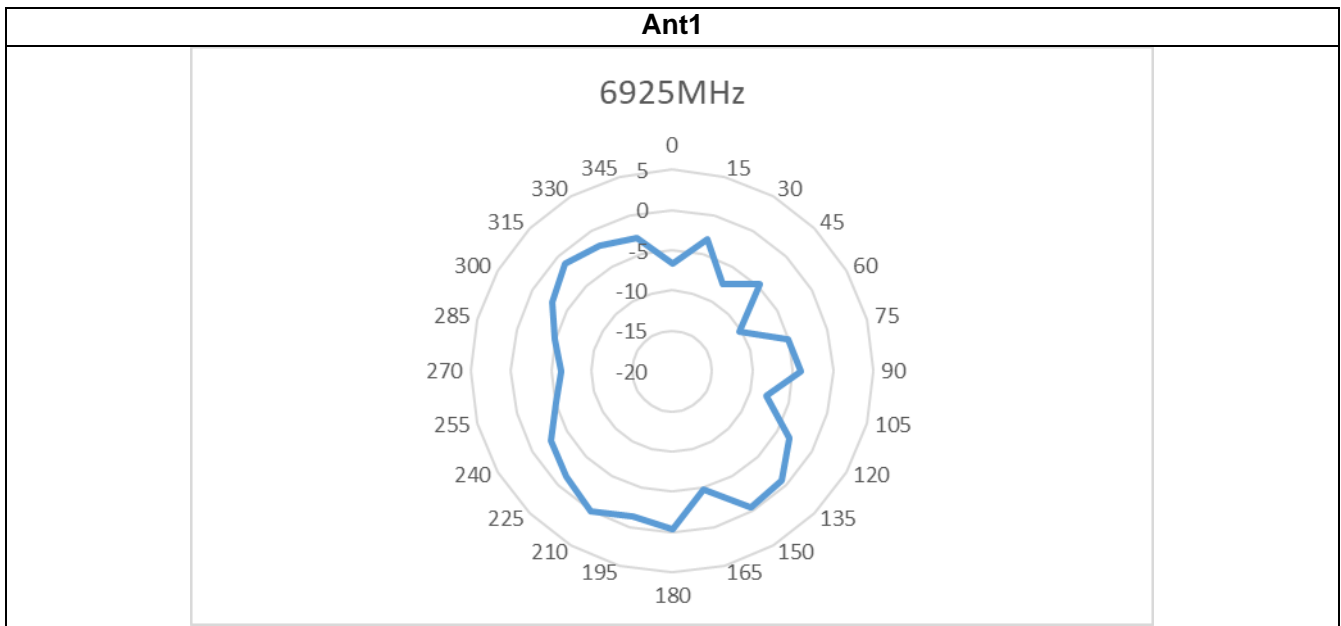
Ant9											
Frequency(MHz)	6075	6125	6175	6225	6275	6325	6375	6425			
Gain(dBi)	1.63	1.52	1.8	1.8	2.21	2.36	2.75	2.96			

Ant10											
Frequency(MHz)	6725	6775	6825	6875	6925	6975	7025	7075	7125		
Gain(dBi)	2.29	2.33	2.37	2.53	2.04	2.23	2.04	2.2	2.3		

Ant11											
Frequency(MHz)	2400	2410	2420	2430	2440	2450	2460	2470	2480	2490	2500
Gain(dBi)	-0.4	0.13	0.26	0.39	0.59	0.82	0.92	1.09	1.38	1.66	1.9
Frequency(MHz)	5150	5200	5250	5300	5350	5400	5450	5500	5550	5600	5650
Gain(dBi)	1.69	1.42	1.53	1.28	1.52	0.93	1.9	2.42	2.5	2.61	1.79
Frequency(MHz)	5700	5750	5800	5850							
Gain(dBi)	1.71	2.33	2.15	2.63							

Ant12											
Frequency(MHz)	6075	6125	6175	6225	6275	6325	6375	6425			
Gain(dBi)	2.25	1.94	2.06	2.23	2.32	2.69	2.63	2.74			

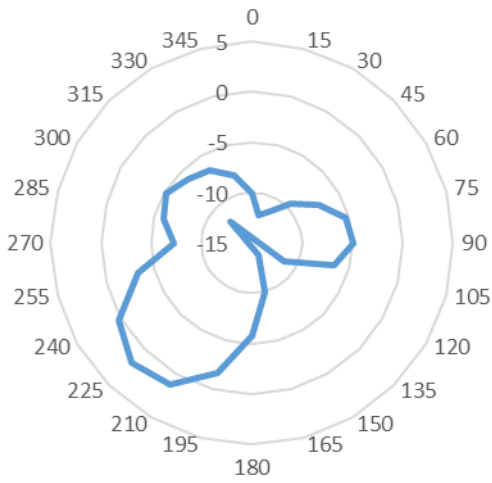
## IV. Antenna Radiation Pattern



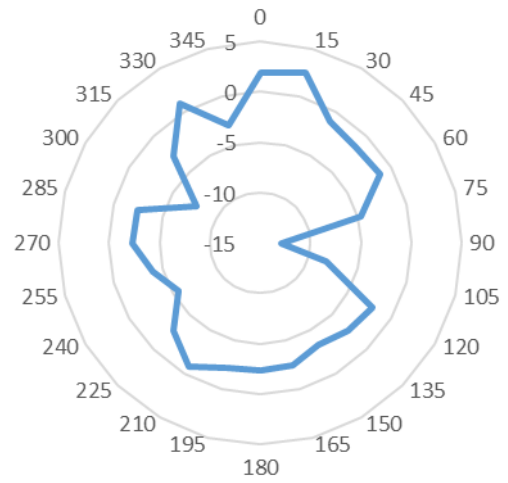


**Ant2**

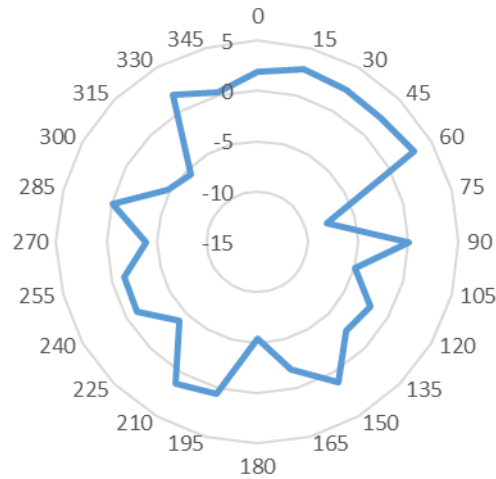
2440MHz



5200MHz

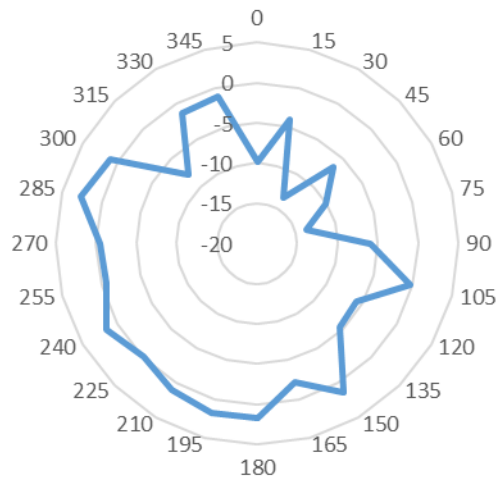


5750MHz



**Ant3**

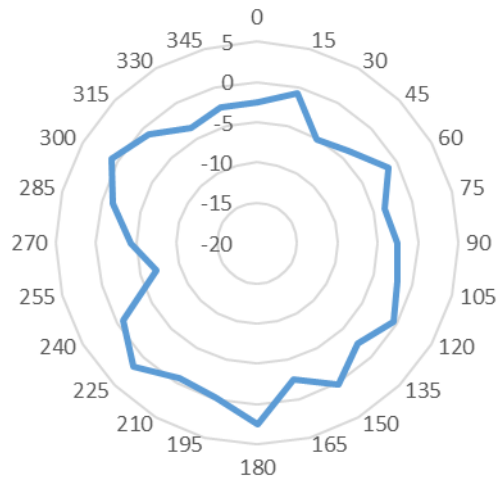
6275MHz





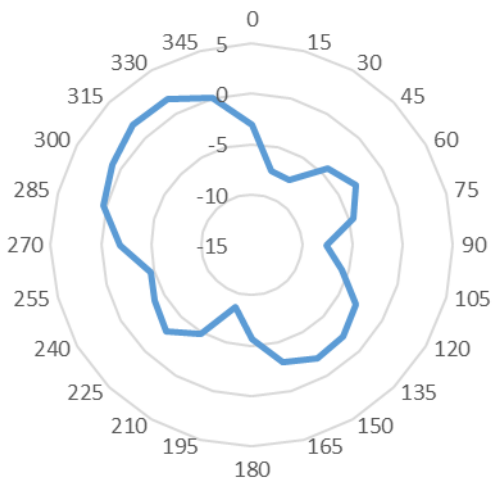
**Ant4**

6925MHz

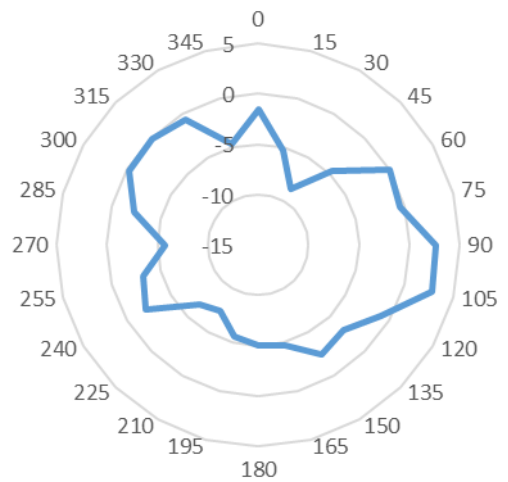


**Ant5**

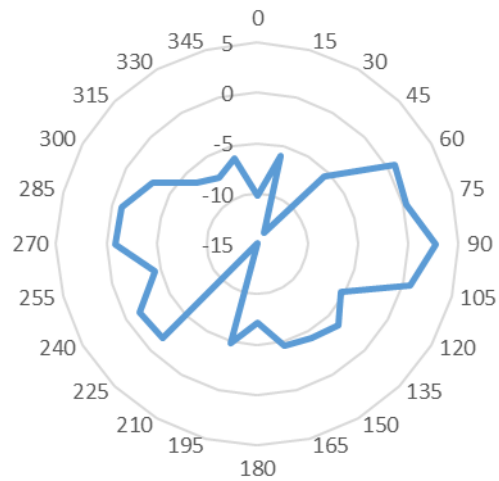
2440MHz



5200MHz

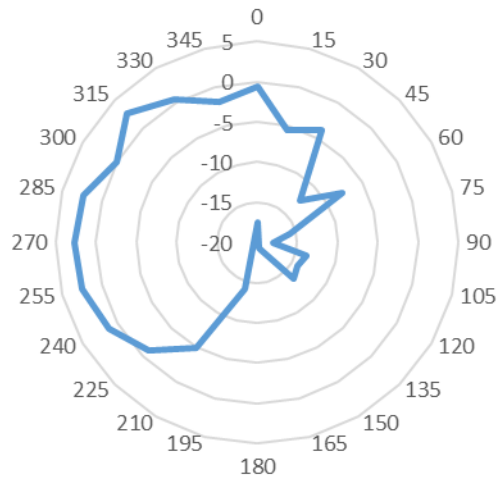


5750MHz



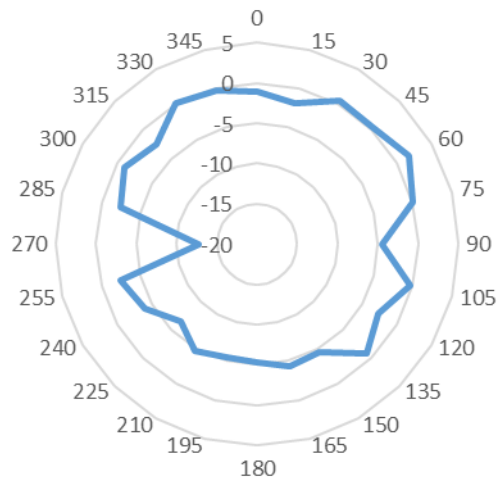
**Ant6**

6275MHz



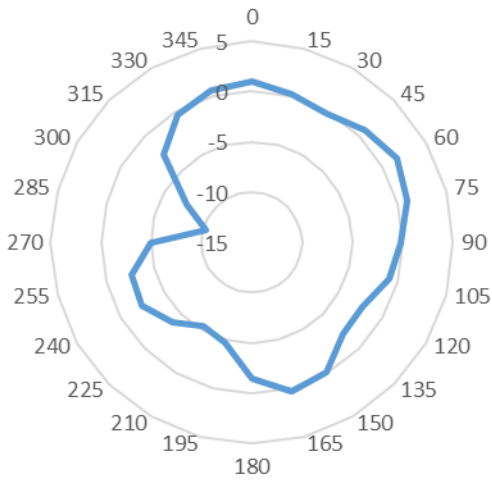
**Ant7**

6925MHz

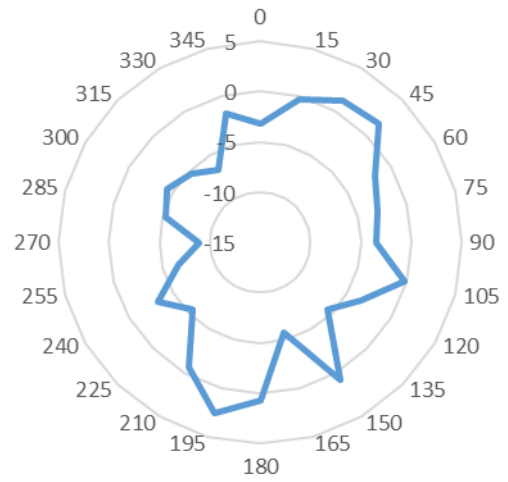


**Ant8**

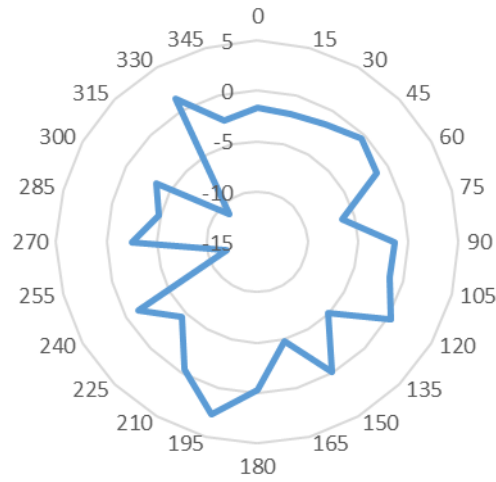
2440MHz



5200MHz

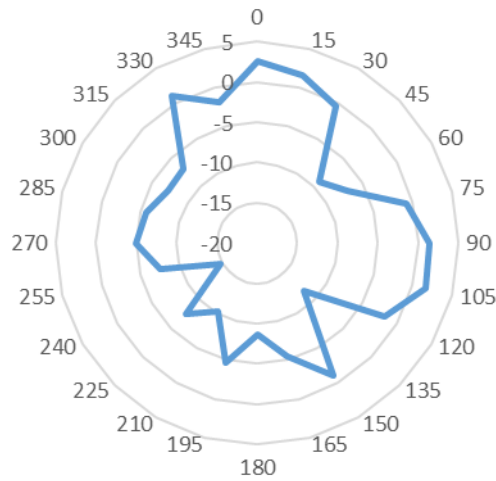


5750MHz



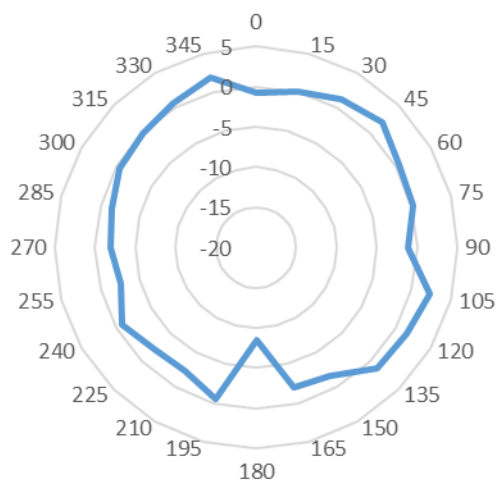
**Ant9**

6275MHz



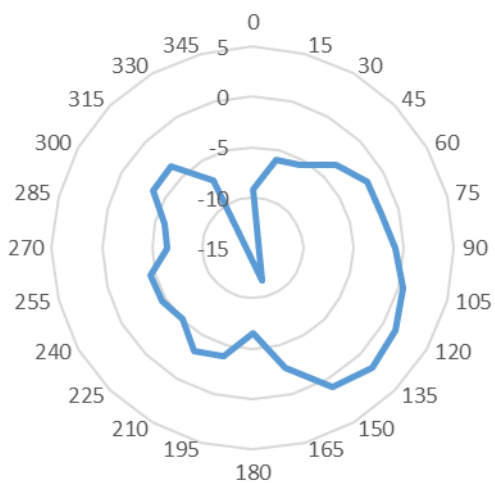
**Ant10**

6925MHz

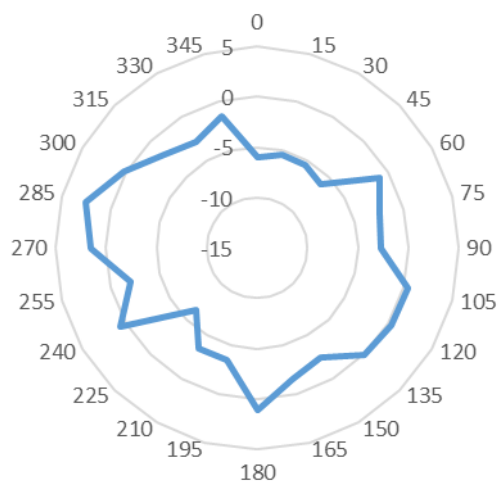


**Ant11**

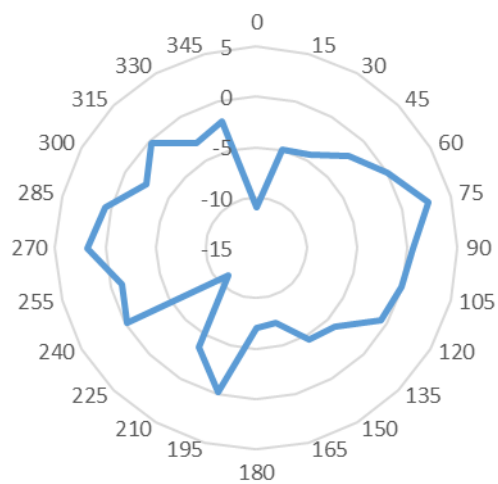
2440MHz



5200MHz



5750MHz



**Ant12**

6275MHz

