
Antenna Specification

Product Model: Deco BE79(3-pack)(US)

Version: 1.0

Manufacturer: _____

Date: _____

Checked By: _____

Manufacturer:

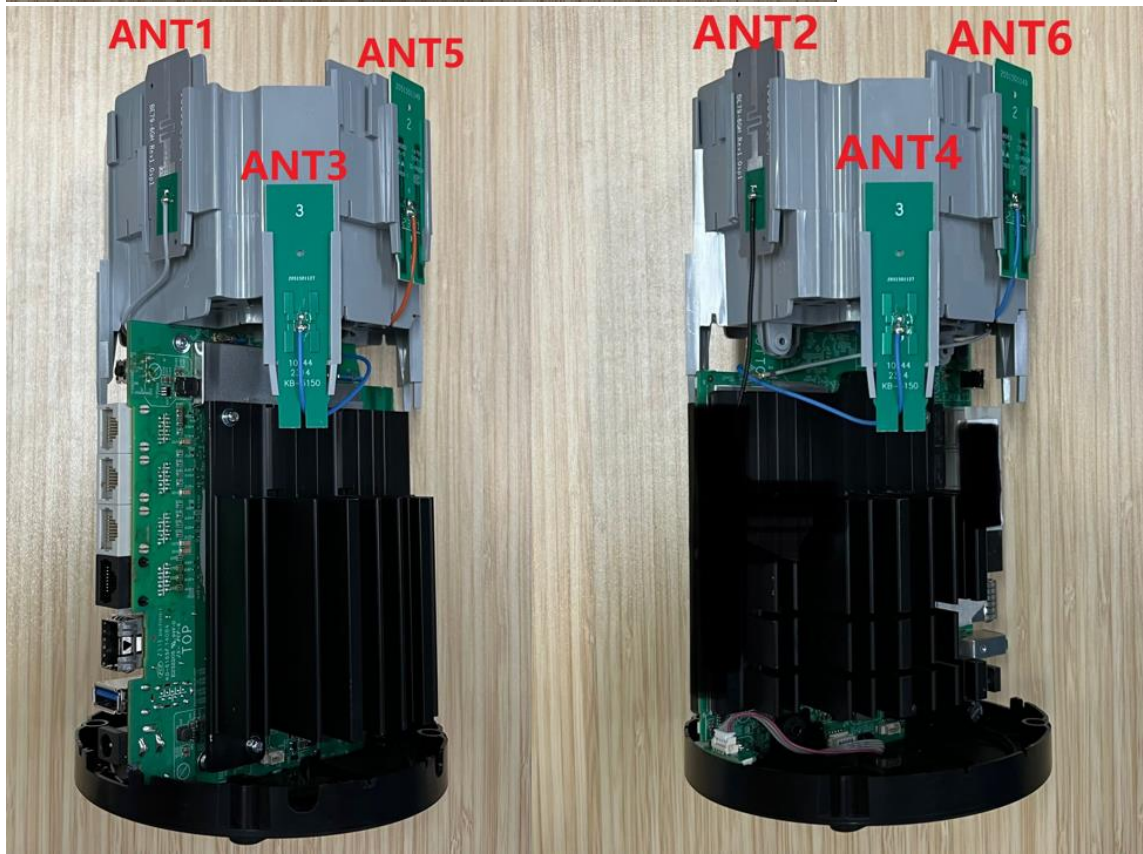
TP-Link Corporation Limited
Room 901, 9/F. , New East Ocean Centre,
9 Science Museum Road, Tsim Sha Tsui,
Kowloon, Hong Kong
TEL: 00852-37585503
<http://www.tp-link.com/en>

Index

I. Antenna Distribution.....	3
II. Electrical Characteristics	4
III. Antenna Peak Gain.....	5
IV. Antenna Radiation Pattern	5

I. Antenna Distribution

Deco BE79(3-pack)(US)



II. Electrical Characteristics

Ant1	
Frequency	6745~7125MHz
Impedance	50Ohm
Antenna Type	Dipole
Antenna Gain	2.94dBi@6745~7125MHz
Radiation pattern	Omni-Directional

Ant2	
Frequency	6745~7125MHz
Impedance	50Ohm
Antenna Type	Dipole
Antenna Gain	2.99dBi@6745~7125MHz
Radiation pattern	Omni-Directional

Ant3	
Frequency	6105~6425MHz
Impedance	50Ohm
Antenna Type	Dipole
Antenna Gain	2.98dBi@6105~6425MHz
Radiation pattern	Omni-Directional

Ant4	
Frequency	6105~6425MHz
Impedance	50Ohm
Antenna Type	Dipole
Antenna Gain	2.95dBi@6105~6425MHz
Radiation pattern	Omni-Directional

Ant5	
Frequency	2400 ~ 2500MHz & 5150 ~ 5850MHz
Impedance	50Ohm
Antenna Type	Dipole
Antenna Gain	1.99dBi@2400~2500MHz 2.97dBi@5150~5850MHz
Radiation pattern	Omni-Directional

Ant6	
Frequency	2400 ~ 2500MHz & 5150 ~ 5850MHz
Impedance	50Ohm
Antenna Type	Dipole
Antenna Gain	1.95dBi@2400~2500MHz 2.97dBi@5150~5850MHz
Radiation pattern	Omni-Directional

III. Antenna Peak Gain

Ant1											
Frequency(MHz)	6725	6775	6825	6875	6925	6975	7025	7075	7125		
Gain(dBi)	2.40	2.80	2.90	2.91	2.65	2.94	2.66	2.67	2.60		

Ant2											
Frequency(MHz)	6725	6775	6825	6875	6925	6975	7025	7075	7125		
Gain(dBi)	2.64	2.69	2.52	2.99	2.65	2.70	2.98	2.82	2.84		

Ant3											
Frequency(MHz)	6075	6125	6175	6225	6275	6325	6375	6425			
Gain(dBi)	2.56	2.98	2.98	2.96	2.88	2.86	2.61	2.55			

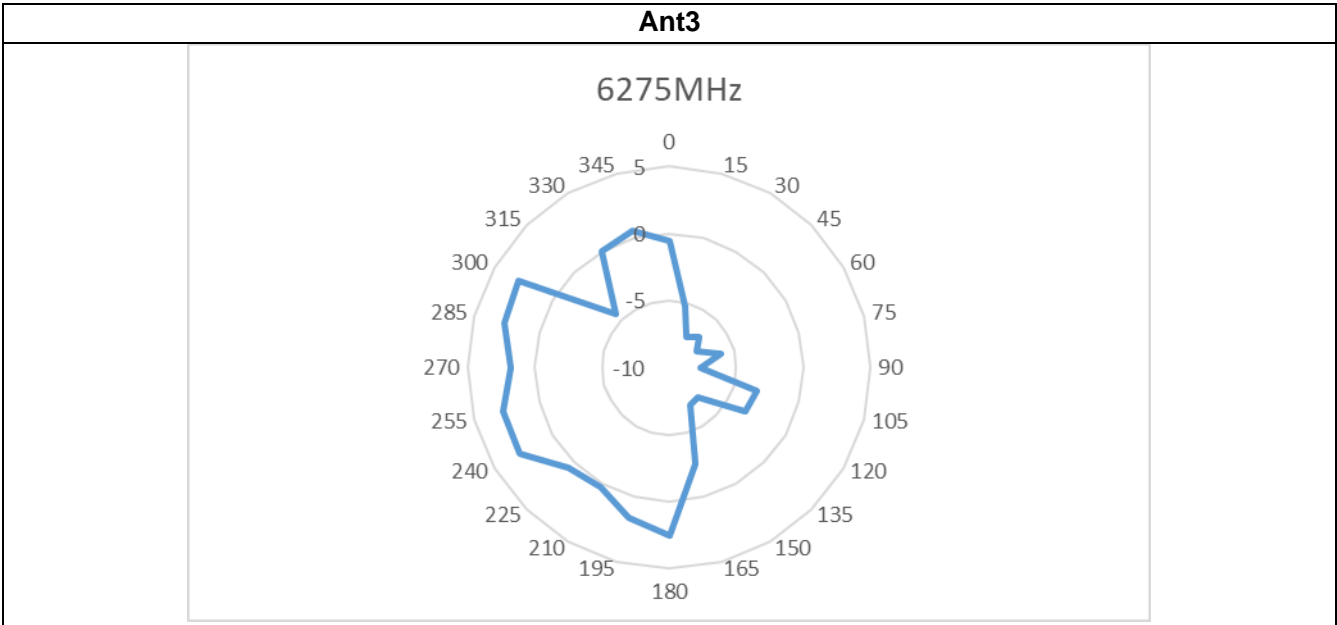
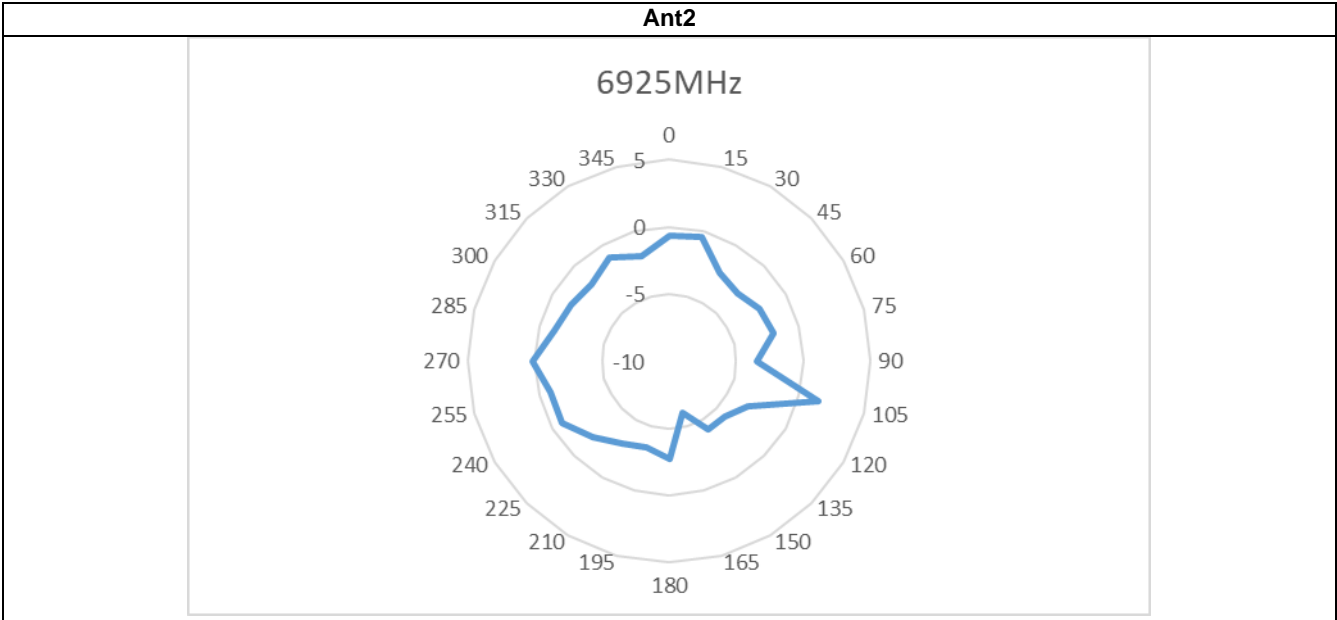
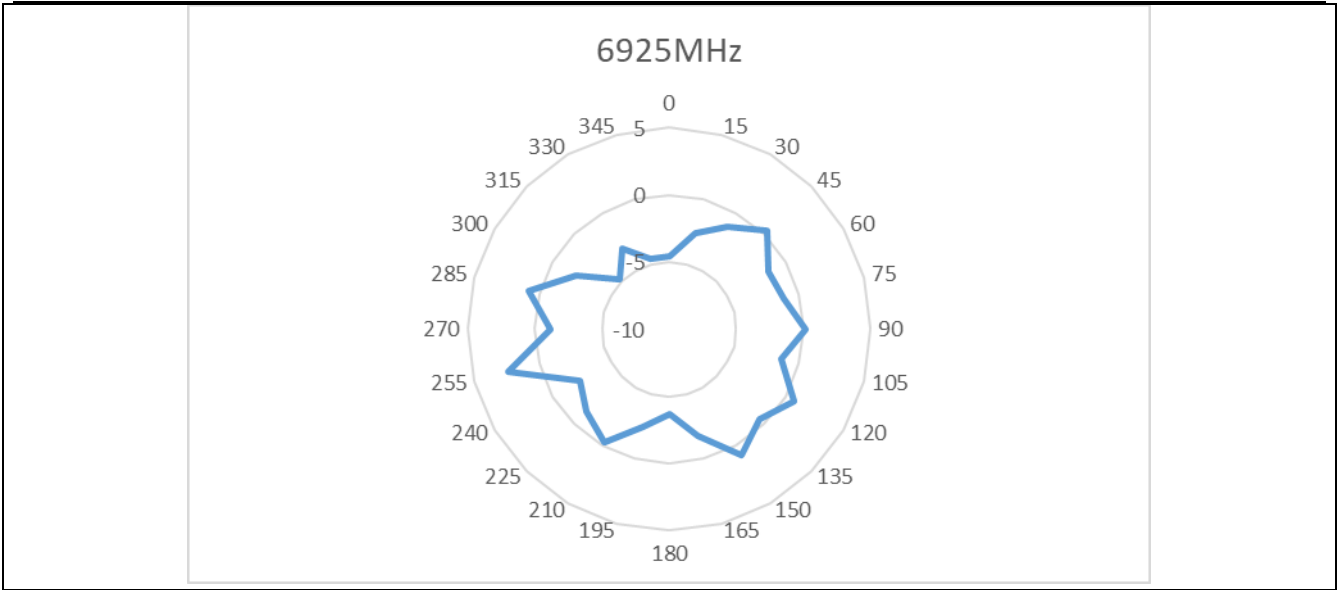
Ant4											
Frequency(MHz)	6075	6125	6175	6225	6275	6325	6375	6425			
Gain(dBi)	2.51	2.39	2.32	2.54	2.68	2.83	2.76	2.95			

Ant5											
Frequency(MHz)	2400	2410	2420	2430	2440	2450	2460	2470	2480	2490	2500
Gain(dBi)	0.73	1.46	1.72	1.85	1.97	1.99	1.93	1.85	1.86	1.82	1.71
Frequency(MHz)	5150	5200	5250	5300	5350	5400	5450	5500	5550	5600	5650
Gain(dBi)	1.63	2.57	2.64	2.51	2.97	2.58	2.81	2.57	2.08	2.40	1.77
Frequency(MHz)	5700	5750	5800	5850							
Gain(dBi)	2.12	2.07	1.88	1.69							

Ant6											
Frequency(MHz)	2400	2410	2420	2430	2440	2450	2460	2470	2480	2490	2500
Gain(dBi)	1.95	1.89	1.70	1.59	1.55	1.63	1.67	1.62	1.60	1.54	1.40
Frequency(MHz)	5150	5200	5250	5300	5350	5400	5450	5500	5550	5600	5650
Gain(dBi)	1.86	2.48	2.27	1.73	1.87	2.07	1.84	1.46	2.32	2.08	2.3
Frequency(MHz)	5700	5750	5800	5850							
Gain(dBi)	2.41	2.83	2.97	2.51							

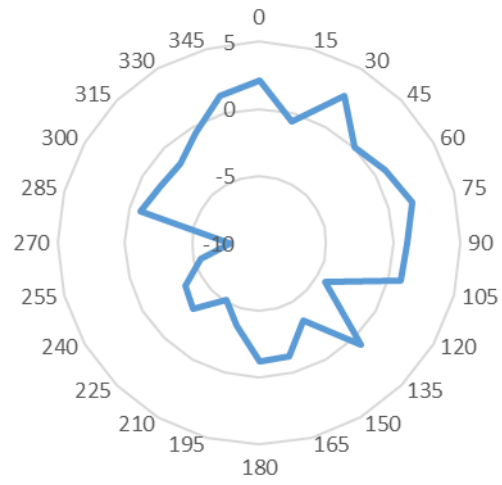
IV. Antenna Radiation Pattern

Ant1											
------	--	--	--	--	--	--	--	--	--	--	--



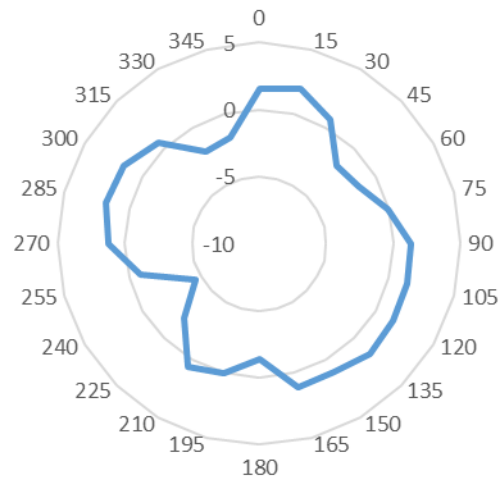
Ant4

6275MHz

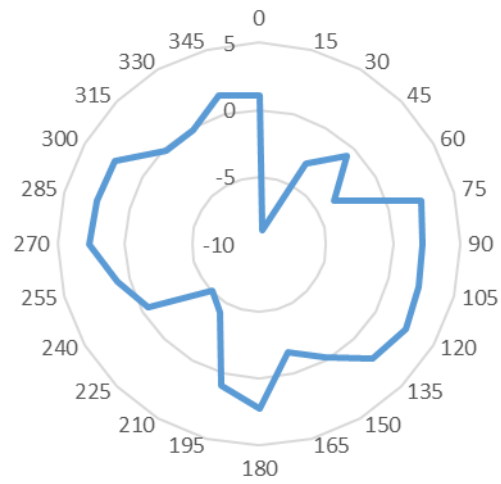


Ant5

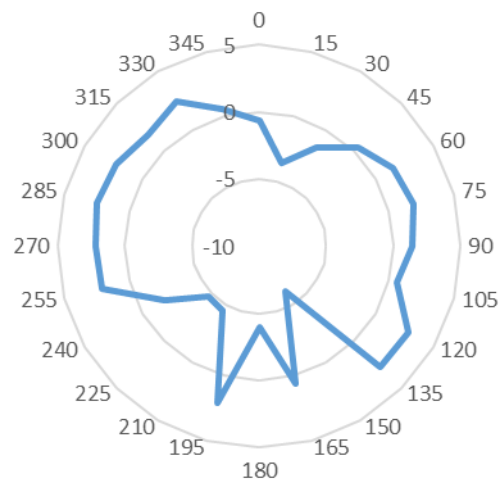
2440MHz



5200MHz

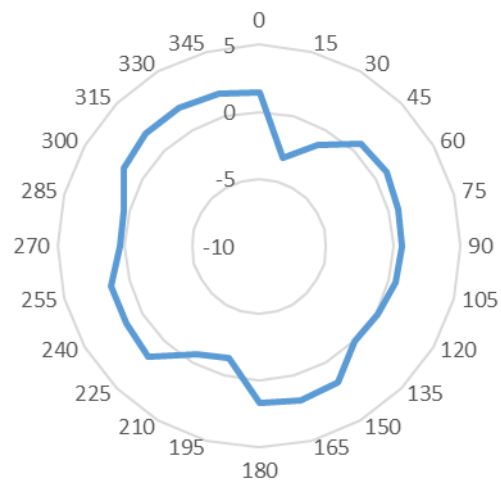


5750MHz

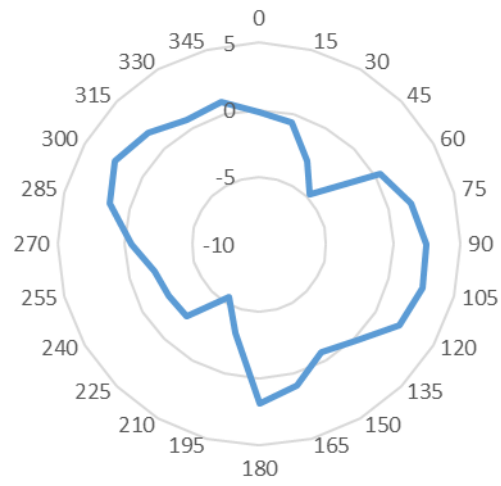


Ant6

2440MHz



5200MHz



5750MHz

