

Microwave Element Ceramic Antenna
Dongguan Zconnlink Electronic Technology Co.,LTD

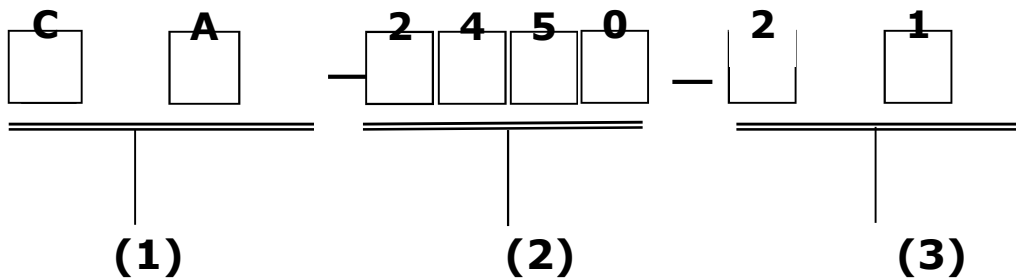
1. FEATURES:

- Light weight, compact
- Wide bandwidth, low cost
- Built-in antenna with high gain

2. APPLICATIONS:

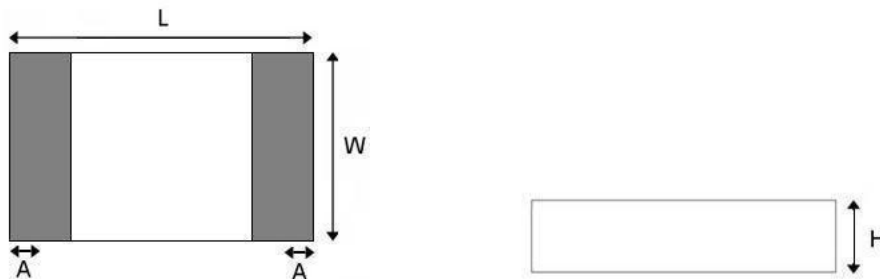
- Bluetooth, Wireless LAN, Mobile TV
- Home RF system, etc

3. PRODUCT IDENTIFICATION



- (1) Product type: Chip Antenna
(2) Center Frequency: 2450MHz
(3) 21 : External Dimensions (L×W) (mm):2.0*1.2
31 : External Dimensions (L×W) (mm):3.1*1.6

4. SHAPE AND DIMENSIONS:



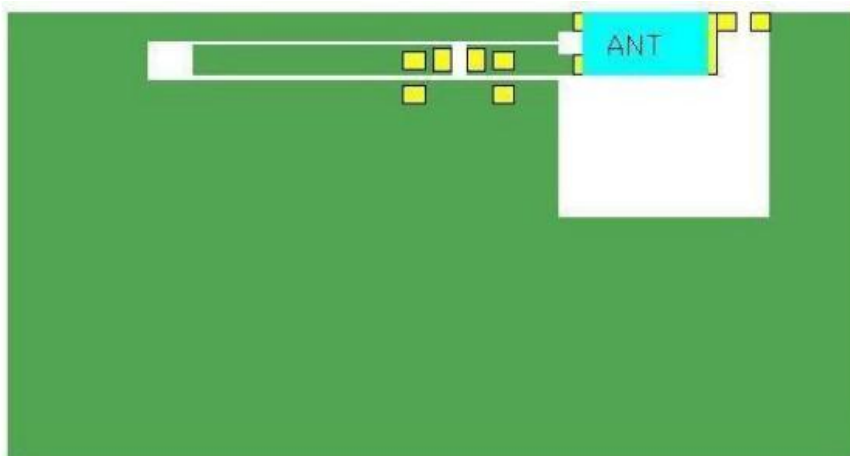
SHAPE AND DIMENSIONS

Microwave Element Ceramic Antenna

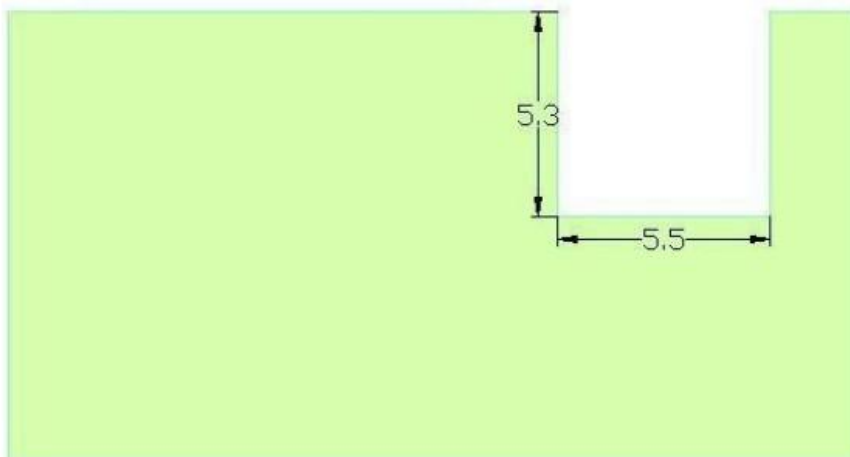
Dongguan Zconnlink Electronic Technology Co., LTD

Style	L	W	C	d	t
2012	2.00±0.10	1.2±0.10	0.40±0.20	0.40±0.20	0.50±0.10
3216	3.10±0.10	1.55±0.10	0.50±0.30	0.40±0.20	0.50±0.10

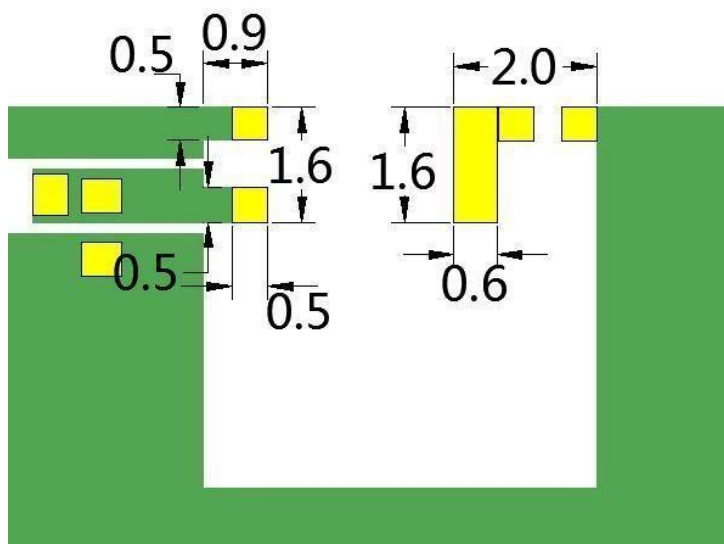
Test board
reference size:
Unit: mm



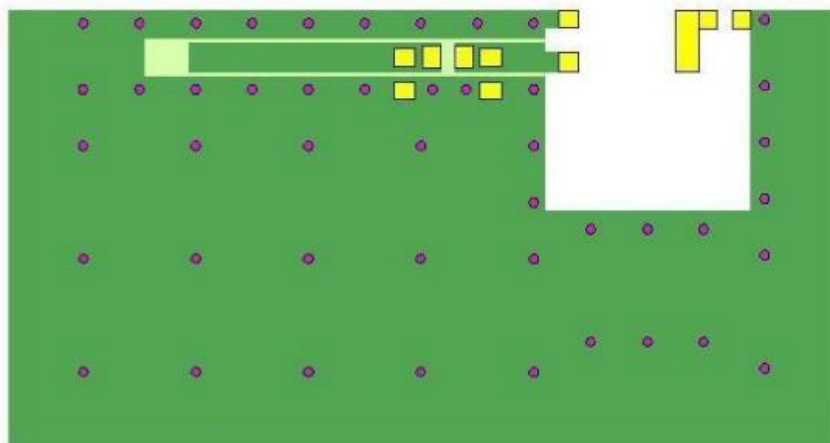
- Antenna
- PAD
- Bottom copper plating
- Top layer copper laying



Microwave Element Ceramic Antenna
Dongguan Zconnlink Electronic Technology Co., LTD

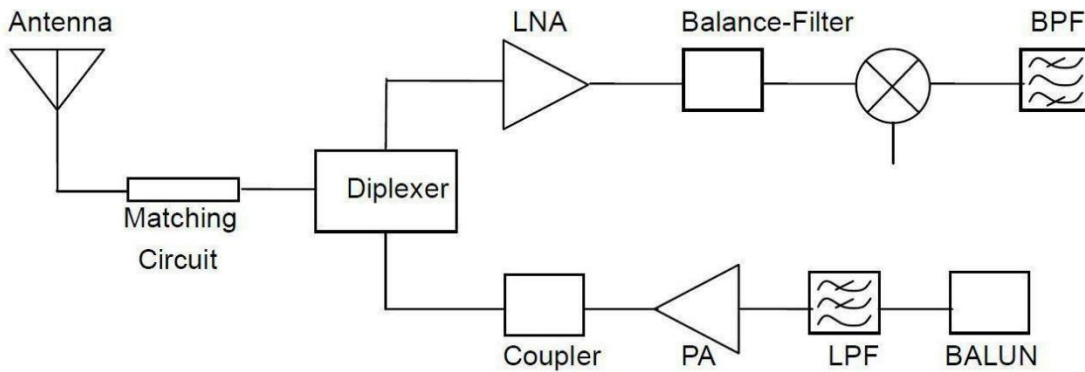


Refer to punch diagram.



- Antenna
- PAD
- Bottom copper plating
- Top layer copper laying
- Punch

Microwave Element Ceramic Antenna
Dongguan Zconnlink Electronic Technology Co.,LTD



5. SPECIFICATIONS:

Test item	Specifications
Bandwidth	2400~2483MHz
Polarization mode	Linear polarization
Maximum gain	2.67dBi
Efficiency	72.30%
input impedance	50 Ω

* Test condition: Test board size 90*40 mm

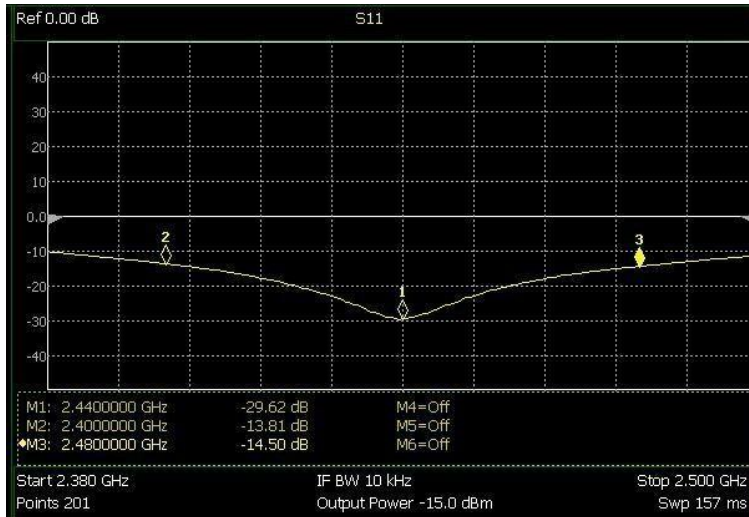
Matching circuit: Pi matching circuit will be required

6. Electrical Characteristics :

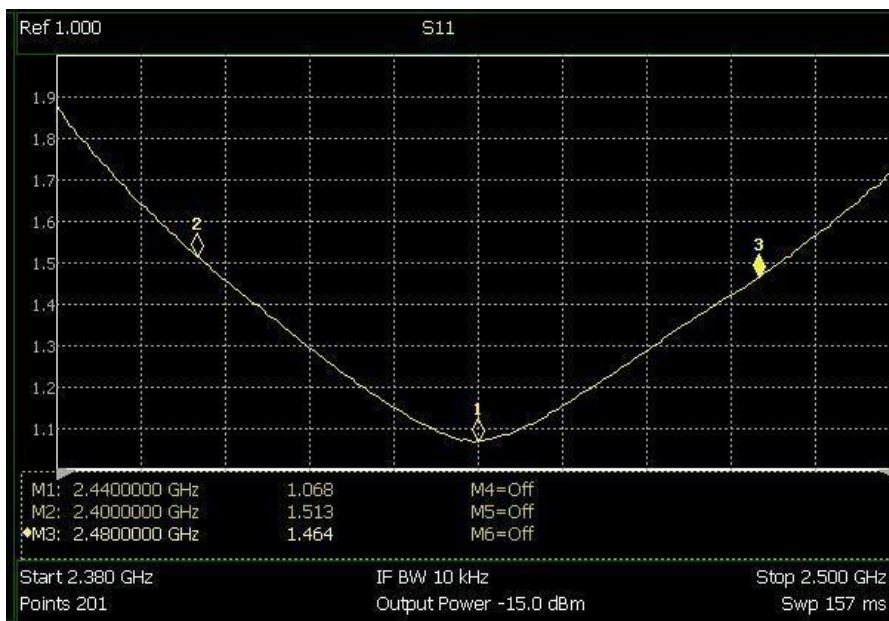
Return loss

Microwave Element Ceramic Antenna

Dongguan Zconlink Electronic Technology Co., LTD



V. S. W. R



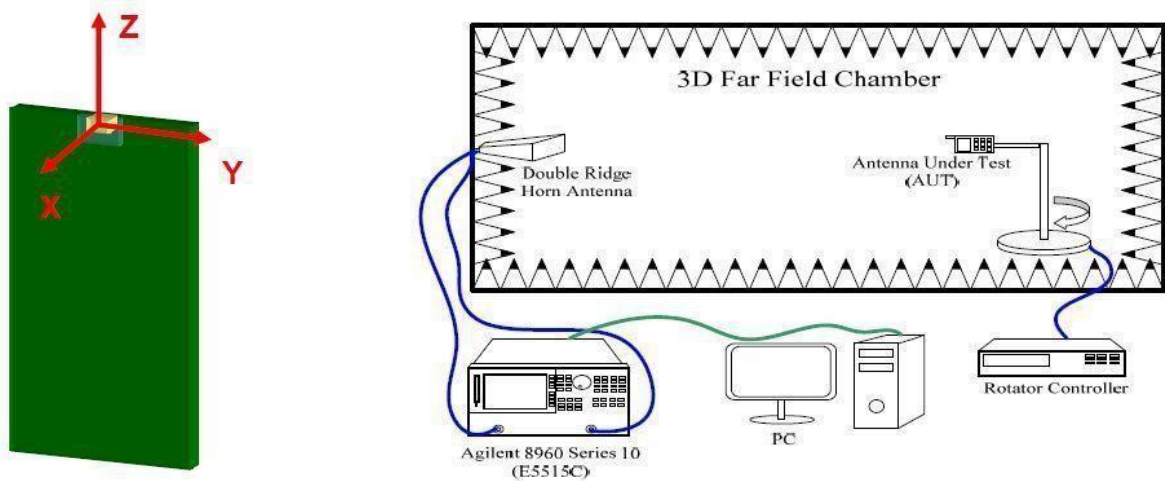
Mark	Frequency	VSWR
1	2400 MHz	1.513
2	2440 MHz	1.068
3	2480 MHz	1.464

Radiation Pattern

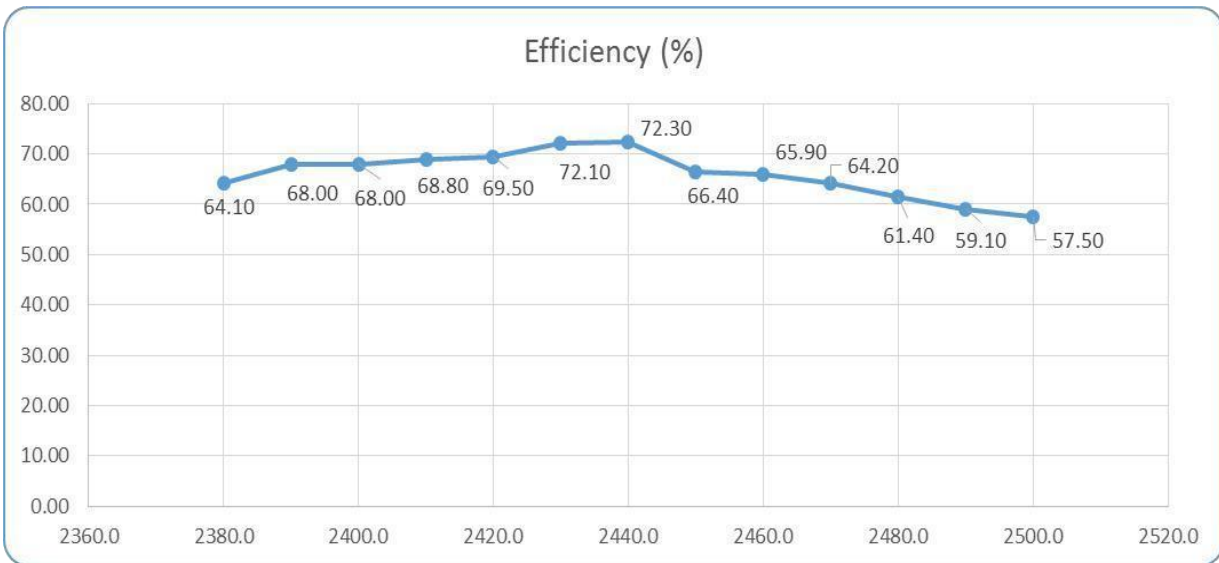
The Gain pattern is measured in FAR-field chamber. DUT is placed on the table of rotator, a standard horn antenna and Vector Network Analyzer is used to collect data.

Microwave Element Ceramic Antenna

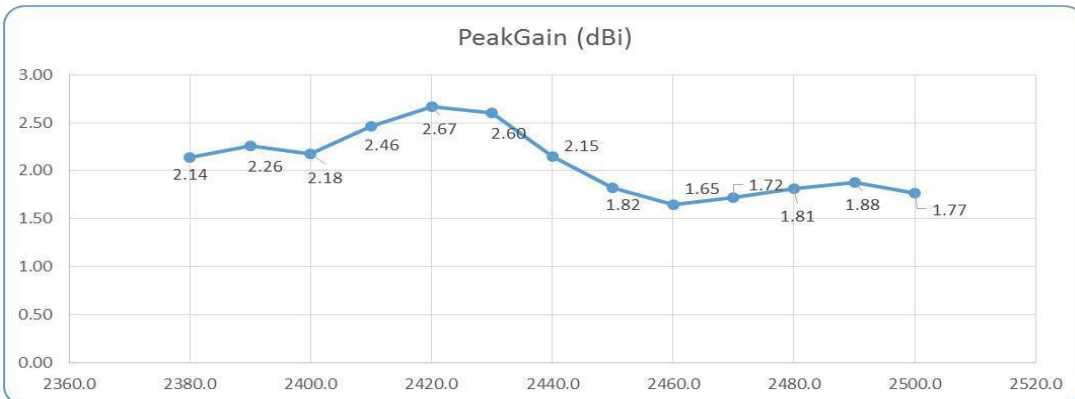
Dongguan Zconlink Electronic Technology Co., LTD



© Efficiency

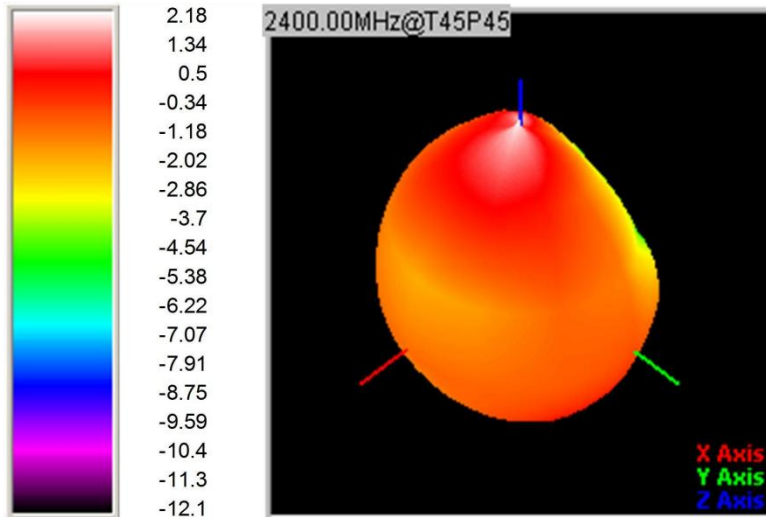


© Maximum gain

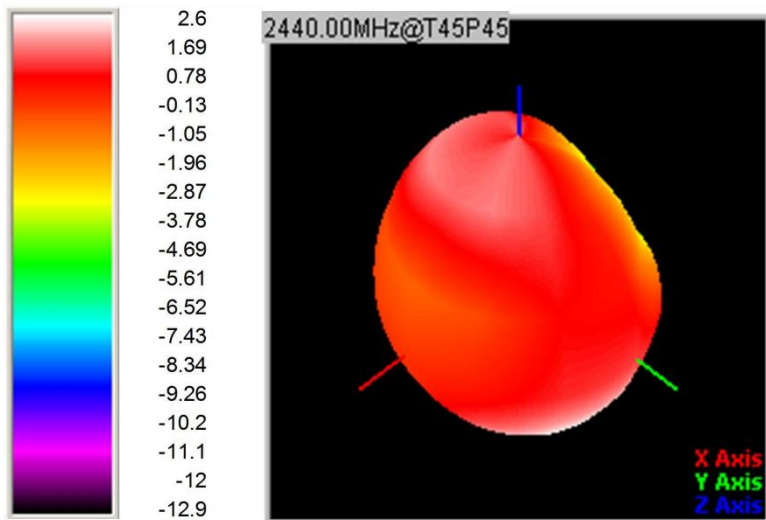


Microwave Element Ceramic Antenna
Dongguan Zconlink Electronic Technology Co.,LTD

© 3D Gain Pattern (2400 MHz)

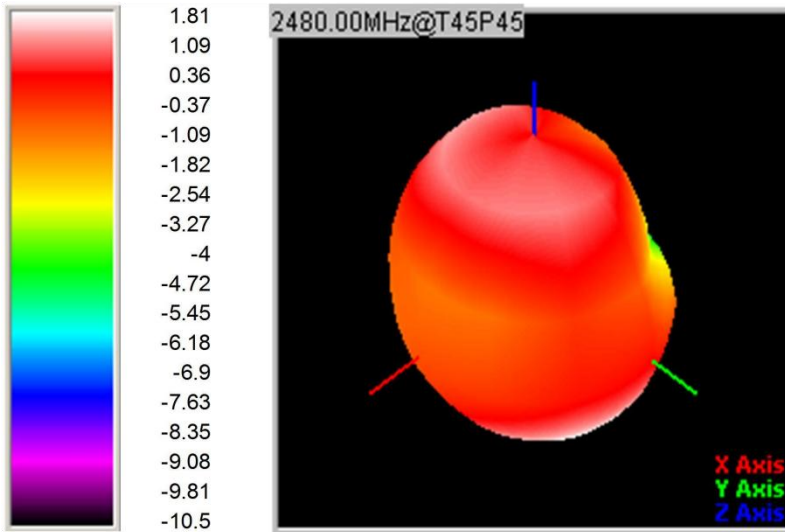


© 3D Gain Pattern (2440 MHz)



© 3D Gain Pattern (2480 MHz)

Microwave Element Ceramic Antenna
Dongguan Zconlink Electronic Technology Co.,LTD



7. Environmental Characteristics

(1) Reliability Test

Item	Condition	Specification
Thermal shock	1. 30 ± 3 minutes at $-40^{\circ} \text{C} \pm 5^{\circ} \text{C}$, 2. Convert to $+105^{\circ} \text{C}$ (5 minutes) 3. 30 ± 3 minutes at $+105^{\circ} \text{C} \pm 5^{\circ} \text{C}$, 4. Convert to -40°C (5 minutes) 5. Total 100 continuous cycles	No apparent damage Fulfill the electrical spec. after test.
Humidity resistance	1. Humidity: 85% R.H. 2. Temperature: $85 \pm 5^{\circ} \text{C}$ 3. Time: 1000 hours.	No apparent damage Fulfill the electrical spec. after test.
High temperature resistance	1. Temperature: $150^{\circ} \text{C} \pm 5^{\circ} \text{C}$ 2. Time: 1000 hours.	No apparent damage Fulfill the electrical spec. after test.
Low temperature resistance	1. Temperature: $-40^{\circ} \text{C} \pm 5^{\circ} \text{C}$ 2. Time: 1000 hours.	No apparent damage Fulfill the electrical spec. after test.
Soldering heat resistance	1. Solder bath temperature : $260 \pm 5^{\circ} \text{C}$ 2. Bathing time: 10 ± 1 seconds	No apparent damage
Solderability	The dipped surface of the terminal shall be at least 95% covered with solder after dipped in solder bath of $245 \pm 5^{\circ} \text{C}$ for 3 ± 1 seconds.	No apparent damage

(2) Storage Condition

(a) At warehouse:

The temperature should be within $0 \sim 30^{\circ} \text{C}$ and humidity should be less than 60% RH.

Microwave Element Ceramic Antenna
Dongguan Zconnlink Electronic Technology Co., LTD

The product should be used within 1 year from the time of delivery.

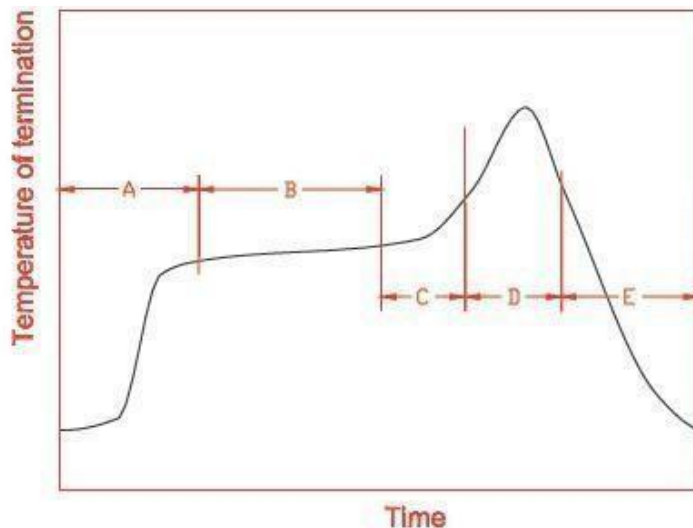
(b) On board:

The temperature should be within -40~85°C and humidity should be less than 85% RH.

(3) Operating Temperature Range

Operating temperature range : -40°C to +105°C.

8. Recommended Reflow Soldering



A	1 st rising temperature	The normal to Preheating temperature	30s to 60s
B	Preheating	140°C to 160°C	60s to 120s
C	2 nd rising temperature	Preheating to 200°C	20s to 40s
D	Main heating	if 220°C	50s~60s
		if 230°C	40s~50s
		if 240°C	30s~40s
		if 250°C	20s~40s
		if 260°C	20s~40s
E	Regular cooling	200°C to 100°C	1°C/s ~ 4°C/s

*reference: J-STD-020C

(1) Soldering Gun Procedure

Note the follows, in case of using solder gun for replacement.

(a) The tip temperature must be less than 350°C for the period within 3seconds

Microwave Element Ceramic Antenna
Dongguan Zconnlink Electronic Technology Co., LTD

By using soldering gun under 30 W.

(b) The soldering gun tip shall not touch this product directly.

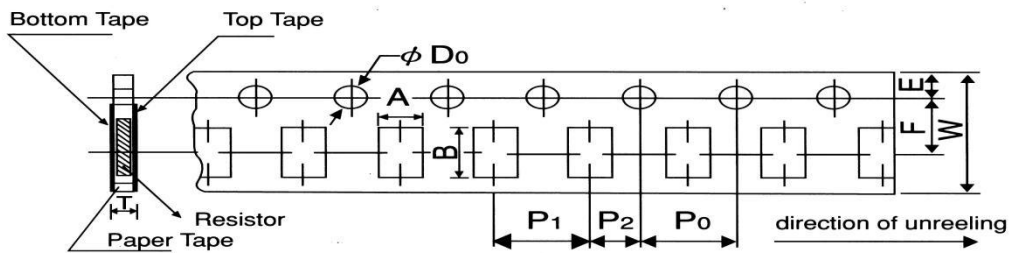
(2) Soldering Volume

Note that excess of soldering volume will easily get crack the body of this product.

9. Taping Package and Label Marking: (unit: mm)

(1) Quantity/Reel: 5000pcs/Reel

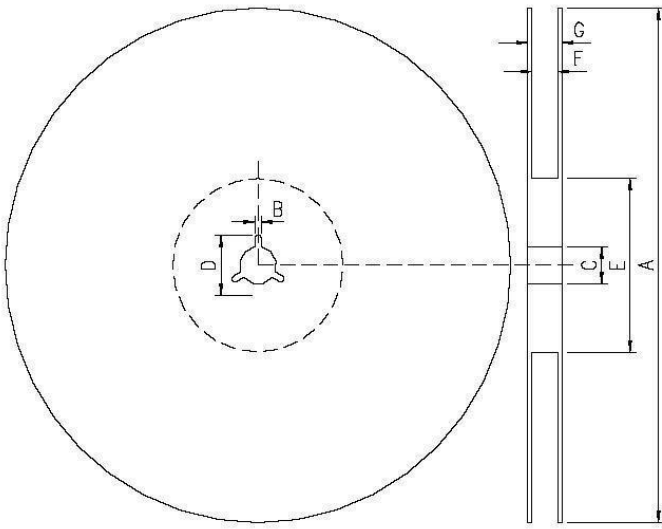
(2) Carrier tape dimensions



Packing	Style	A	B	W	F	E	P ₁	P ₂	P ₀	D ₀	T
Paper	2012	1.6±0.15	2.4±0.2	8.0±0.2	3.5±0.05	1.75±0.1	4.0±0.1	2.0±0.05	4.0±0.1	$\phi 1.5$ +0.1 -0	0.84±0.1
Paper	3216	2.0±0.15	3.6±0.2	8.0±0.2	3.5±0.05	1.75±0.1	4.0±0.1	2.0±0.05	4.0±0.1	$\phi 1.5$ +0.1 -0	0.84±0.1

(3) Taping reel dimensions

Microwave Element Ceramic Antenna
Dongguan Zconnlink Electronic Technology Co., LTD



A	178.0±2.0
B	2.0±0.5
C	13.0±0.5
D	21.0±0.8
E	62.0±1.5
F	9.0±0.5
G	13.0±1.0