



## 3D Printer User Manual

3D打印机用户使用手册

V1.4

### Dear Consumers,

Thank you for choosing our products. For the best experience, please read the instructions before operating the Printer. Our teams will always be ready to render you the best services. Please contact us via the phone number or e-mail address provided at the end when you encounter any problem with the Printer. For a better experience in using our product, you can also learn how to use the printer in the following ways:  
View the accompanied instructions and videos in the U disk.  
Visit our official website [www.creality.com](http://www.creality.com) to find relevant software/hardware information, contact details and operation and maintenance instructions.

### 尊敬的用户：

感谢您选择创想三维的产品。为了您使用方便，请您在使用之前仔细阅读本说明书，并严格按照说明书的指示进行操作。  
创想三维团队时刻准备为您提供优质的服务。在使用过程中无论遇到什么问题，请按照说明书结尾所提供的电话、邮箱与我们联系。为了您能够更好地体验我们的产品，您还可以从以下方式获取设备操作知识：  
随机使用说明：您可以在U盘内找到相关使用说明及视频。  
您还可以登陆创想三维官网([www.cxsw3d.com](http://www.cxsw3d.com))寻找相关软硬件、联系方式、设备操作、设备保养等信息。

### Firmware/Software Downloads and Upgrades

The product has access to both LycheeSlicer . WIFI printing and access to the Creative Cloud are under development.



Slicing software supported:  

Download the firmware and HALOT BOX slicing software at: <https://www.creality.com>

Download the LycheeSlicer slicing software at: <https://lychee.mango3d.io>

### 固件、软件下载与升级

该产品已接入LycheeSlicer切片软件，WIFI打印以及接入创想云正在开发中。

支持切片软件:  

固件与HALOT BOX切片软件下载地址: <https://www.cxsw3d.com>

LycheeSlicer 切片软件下载地址: <https://lychee.mango3d.io>

## NOTES 使用须知

- 1 Do not use the printer any way other than described here in order to avoid personal injury or property damage.
- 2 Do not place the printer near any heat source or flammable or explosive objects. We suggest placing it in a well-ventilated, low-dust environment.
- 3 Do not expose the printer to violent vibration or any unstable environment, as this may cause poor print quality.
- 4 Please use recommended resin to in case damage of machine.
- 5 Do not use any other power cable except the one supplied. Always use a grounded three-prong power outlet.
- 6 Please do not open the plastic cover during usage, otherwise the printing will be interrupted.
- 7 Do not wear cotton gloves when operating the printer. Such cloths may become tangled in the printers moving parts leading to burns, possible bodily injury, or printer damage.
- 8 Please wait a moment after the print is finished. And please wear gloves to take out the print by tools.
- 9 Clean the printer frequently. Always turn the power off when cleaning, and wipe with a dry cloth to remove dust, adhered printing plastics or any other material off the frame, guide rails, or wheels. Use glass cleaner or isopropyl alcohol to clean the print surface.
- 10 Children under 10 years should not use the printer without supervision.
- 11 Tips: Do not plug or unplug the power cord when power on.
- 12 Users should comply with the laws and regulations of the corresponding countries and regions where the equipment is located (used), abide by professional ethics, pay attention to safety obligations, and strictly prohibit the use of our products or equipment for any illegal purposes. Creality will not be responsible for any violators' legal liability under any circumstance.

- 1 请勿尝试任何使用说明中没有描述的方法来使用本机, 避免造成意外的人身伤害和财产损失;
- 2 请勿将本机放置在易燃易爆物中或高热源附近, 请将本机放置在通风、阴凉、少尘的环境内;
- 3 请勿将打印机放置在振动较大或者其他不稳定的环境内, 机器晃动会影响打印机打印质量;
- 4 建议使用厂家推荐耗材, 以免造成机器损坏;
- 5 请勿在安装过程中使用其他产品电源线代替, 请使用本机附带的电源线, 电源插头需接插在带有地线的三孔插座;
- 6 请勿在打印机工作时打开打印机面盖, 以免影响打印;
- 7 请勿在操作打印机时戴棉手套, 以防可动部件对人身造成卷入挤压和切割伤害;
- 8 在打印完毕后稍等片刻, 戴上手套后再取下打印平台, 借助工具将平台上的模型取下, 清理时请勿直接用手触摸;
- 9 常做产品维护, 定期在断电的情况下, 用干布对打印机做机身清洁, 拭去灰尘和粘结的打印材料、导轨上的异物;
- 10 年龄在10岁以下的儿童, 请勿在没有人员监督的情况下使用本机, 以免造成人身伤害;
- 11 温馨提示: 请勿带电插拔电线;
- 12 使用者应遵守设备所在地(使用地)相应国家、地区法律法规, 恪守职业道德, 注意安全义务, 严禁将我司的产品或设备使用在任何非法用途上。如有违反者所应承担的相关法律责任我司概不负责。

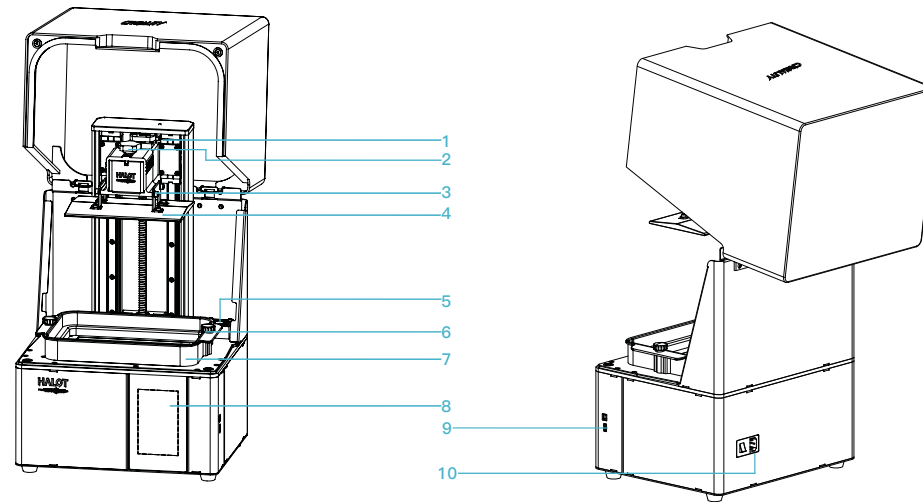
## Contents目录



Introduction 设备简介	01-01
Parameters 设备参数	02-02
Parts List 零件清单	03-03
Assemble the 3D Printer 组装3D打印机	04-04
Use the 3D Printer 使用3D打印机	05-09
Print Method 打印方式	10-19
Wiring Connection 电路接线	20-20
Troubleshooting 故障检修	21-22



## 1. Introduction 设备简介



1 Limit switch  
限位开关

2 Hexalobular socket screw  
梅花胶头手拧螺丝

3 Leveling screw  
调平螺钉

4 Building platform  
成型平台

5 Air filter  
空气过滤器

6 Hexalobular socket screw  
梅花胶头手拧螺丝

7 Resin vat  
料盘

8 Touch screen  
显示屏

9 USB port  
USB接口

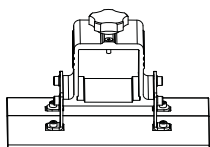
10 Power socket  
电源接口

## 2. Equipment parameters 设备参数

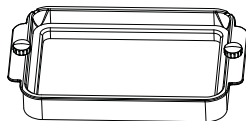


基本参数	
Model Name   产品型号	HALOT-SKY 2022
Build Size   成型尺寸	198*123*200mm ((length*width * height   长*宽*高)
XY Axis Resolution   XY轴分辨率	3840*2400
XY Axis Accuracy   X/Y轴精度	0.05mm
Print speed   打印速度	1-4S/ layer   1-4S/层
Layer Thickness   打印层厚	0.01mm-0.2mm
Touch Screen   触摸屏	5 inch touch screen   5英寸触摸屏
Light Source Type   光源配置	Integral Light Source(wavelength 405nm)   积分式光源(波长405nm)
Rated Voltage   额定电压	100-240V~,50/60Hz
Rated Power   额定功率	250W
Machine Size   设备尺寸	340*292*552mm
Package size   包装尺寸	450*390*705mm
Net Weight   净重	15.73kg
Gross Weight   毛重	21.68kg
Print Method   打印方式	USB Disk, Creality Cloud App, Creality Cloud Online, WiFi Print   U盘, 创想云App, 创想云在线打印, 无线打印
Machine Language   设备语言	中文(简/繁)/ English/ Español/ Deutsche/ Français/ Русский/ Português/ Italiano/ Türk/Nederlands/Polskie/日本語/ 한국어
Slicing Software Operation System 切片软件操作系统	Win7/Win8/Win 10 64bit, Mac system(32-bit is not supported)   Win7/Win8/Win 10 64位操作系统、Mac系统 (不支持32位)
Compatible Resin   专用耗材	Common rigid photosensitive ,Standard resin ,High hardness ,High toughness ,Dental model resin 普通刚性树脂、标准树脂、弹性树脂、高硬度、高韧性树脂、牙模树脂等

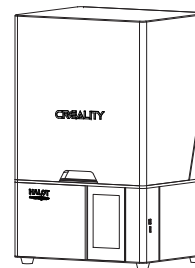
### 3. Package Content 零件清单



1 Print platform | 打印平台 x 1



2 Resin vat | 料盘 x 1



3 3D printer | 打印机 x 1

#### Tool list 工具包清单



1 U disk x 1  
U盘



2 Screwdrivers x 1  
螺丝刀工具包



3 Plastic blade x 1  
塑胶铲刀



4 Resin filter x 4  
纸漏斗



5 Release film x 1  
离型膜



6 Metal blade x 1  
金属铲刀



7 Power cord x 1  
电源线



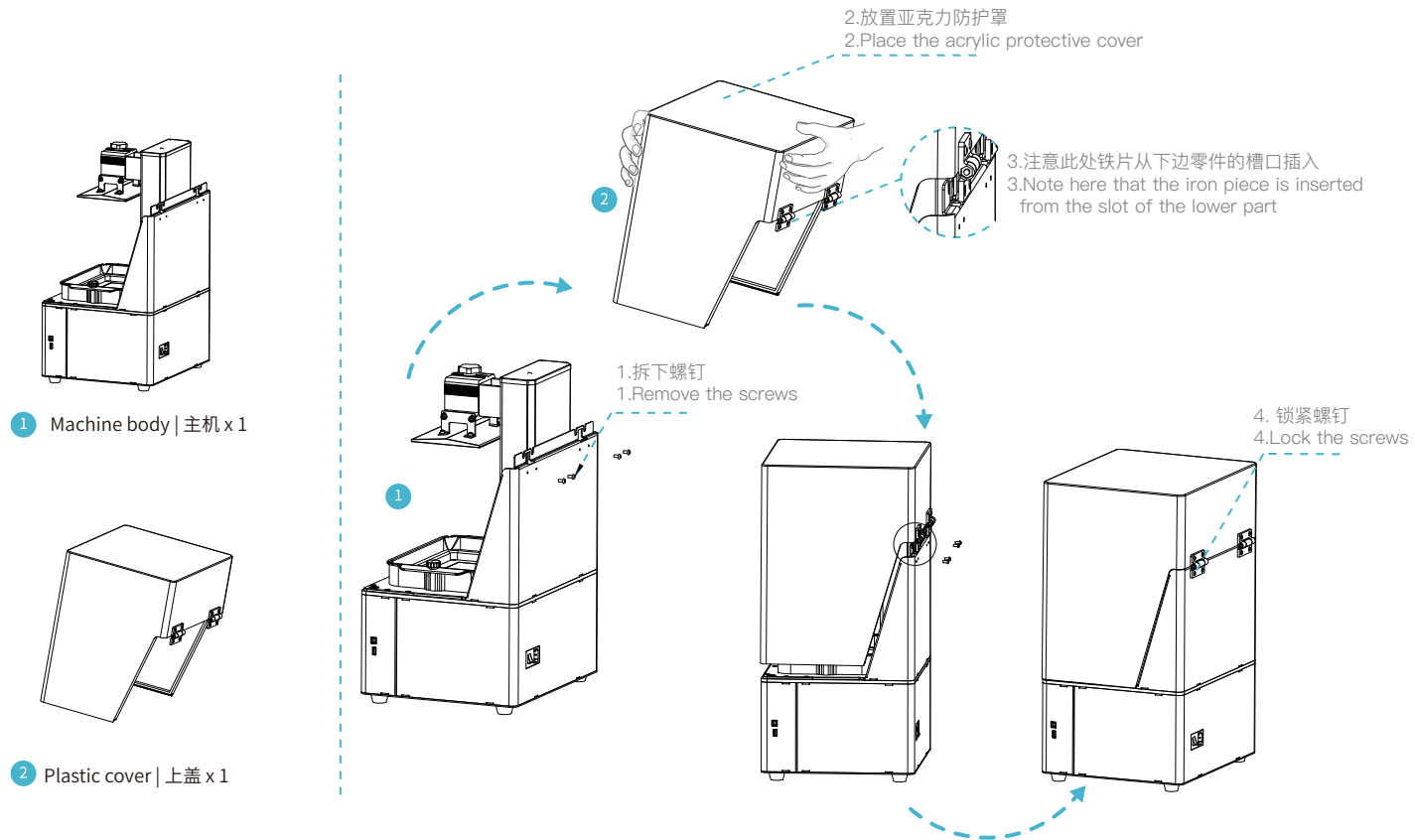
8 Vat cover x 1  
料槽防尘盖



9 Calibration card x 1  
校准卡片

Tips: the above accessories are for reference only, in kind prevail! 注意: 以上配件仅供参考, 请以实物为准!

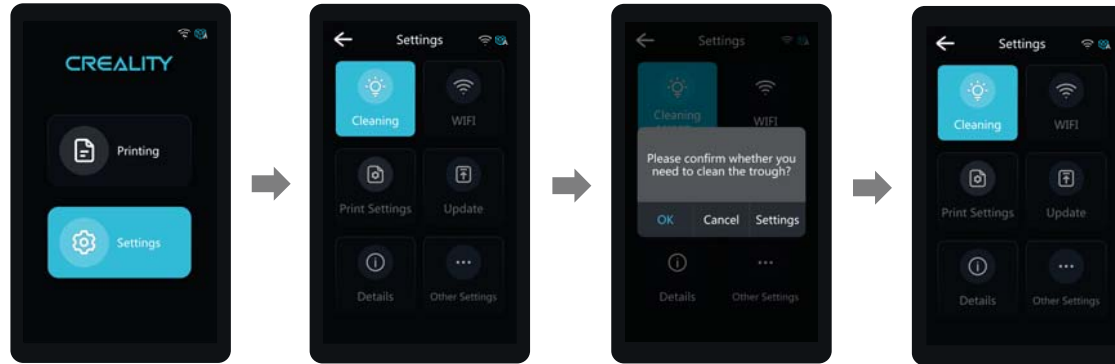
#### 4. Assemble the 3D Printer 组装3D打印机





## 5. Interface Information 界面信息

Setting



设置



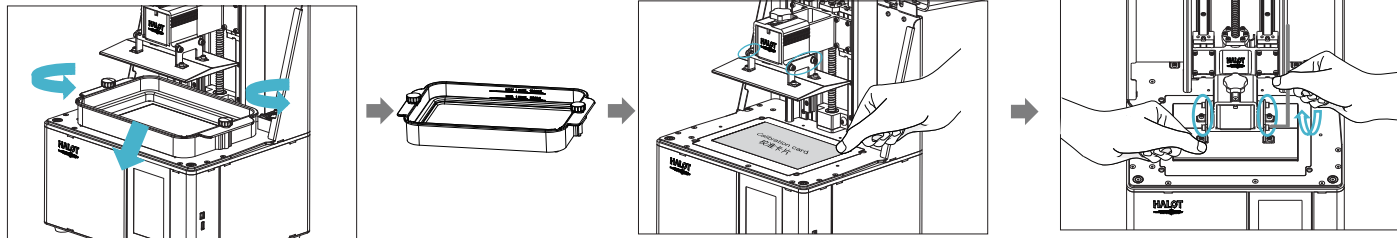
Note: The current interface is for reference only, due to the continuous upgrading of functions, the actual to the official website of the latest firmware UI as the standard.  
注意：当前界面仅供参考，由于功能不断升级，实际以官网最新固件UI为准。

## 6. Level Platform 调平平台



Note: The printing platform has been leveled at the factory. If it needs leveling due to transportation or other reasons, please follow the steps below to adjust the printing platform.

注意: 打印平台出厂时已调平, 若因运输或其他原因需要调平, 可以进行以下步骤进行打印平台调平。



1. To calibrate the printing platform, first raise the platform, loosen the fixing screws on the left and right sides of the material trough, and take out the material trough;

进行打印平台的校准, 首先上升平台, 拧松料槽左右两侧料盘固定螺丝, 将料槽取出;

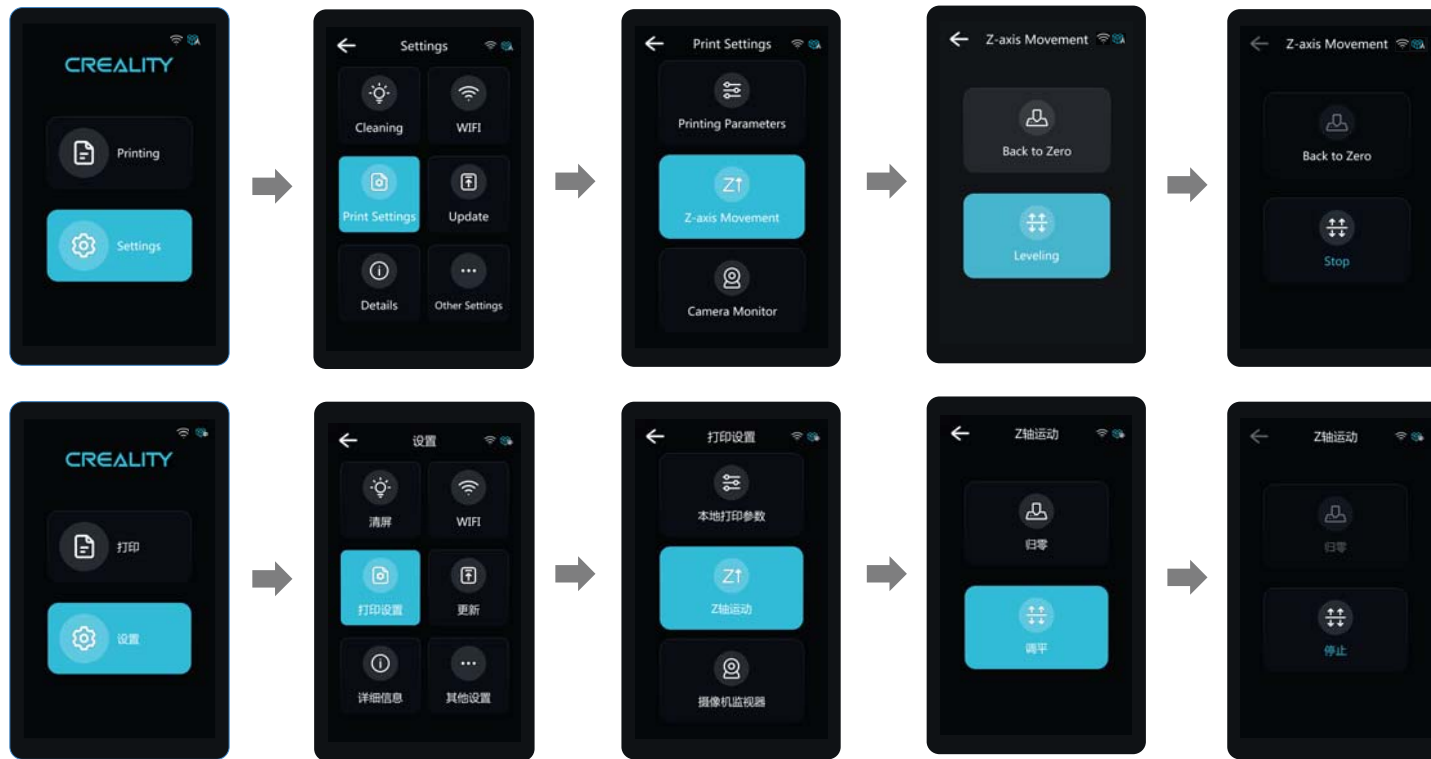
2. Loosen the four screws on the connecting plate on molding platform plate, attach calibration card on the printing screen, press Settings → Print Settings → Z axis movement → Leveling, Check whether the platform fits evenly with the paper by referring to the steps on Page 7.

松开成型平台板连接板的四颗螺丝, 将校准卡片贴紧打印屏, 按设置 → 打印设置 → Z轴运动 → 调平, 参照P7页步骤作业, 检查平台是否与纸张均匀贴合。

3. After confirming that Calibration card fits evenly with the platform, screw up the four screws of the platform.

确认校准卡片均匀贴合后, 锁紧平台的四颗螺丝。

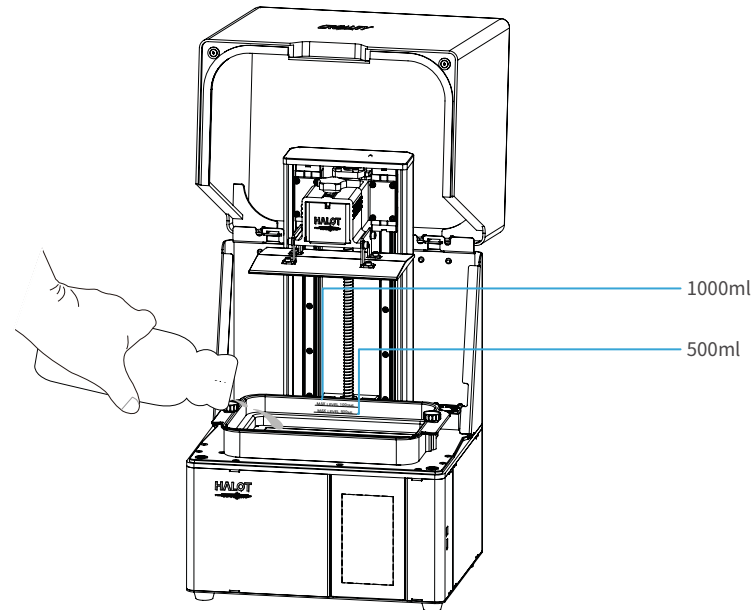
## 6. Level Platform 调平平台



Note: The current interface is for reference only, due to the continuous upgrading of functions, the actual to the official website of the latest firmware UI as the standard.  
注意：当前界面仅供参考，由于功能不断升级，实际以官网最新固件UI为准。

## 7. Load Resin 装料

Pour the UV photosensitive resin into the resin vat. The slot capacity is 500ml/1000ml.  
将3D打印机 UV 光敏树脂倒入料盘, 槽位容量分别:500ml/1000ml。



Tips:How to change resin:

Take out the resin vat slowly, pour out the remaining resin into the container, clean the resin vat, pour in new resin, and then install the resin vat to the machine.

提示:如何更换耗材?

将料盘缓缓取出,把剩余树脂倒入容器,清洗干净料盘,重新倒入新树脂,再把料盘安装到机器即可。

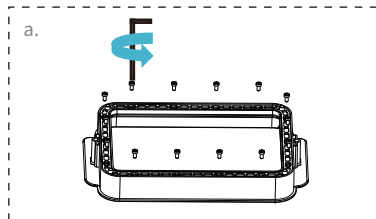


Caution :Resin may cause skin irritation or an allergic skin reaction. Please wear gloves before use to avoid direct contact with the skin.

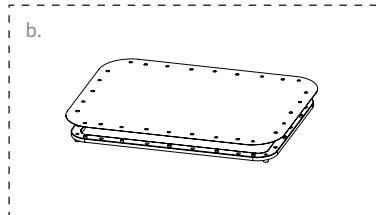
警示:请戴上手套方可进行装料,光敏树脂为刺激性材料,避免接触到皮肤。



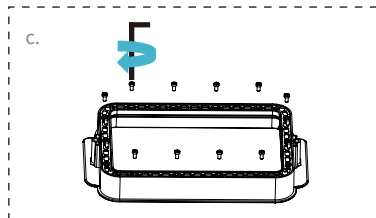
### Installation steps 安装步骤



a. First, remove the 14 screws at the bottom of the vat and take down the old release film.  
首先拆卸料槽底部的14颗螺丝,取出坏的离型膜。

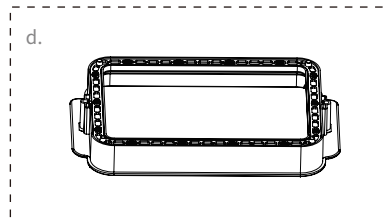


b. Prepare the new release film, peel off the the protective films on both sides of the release film. Align the holes and fit the release film on the clamping ring.  
撕掉新的离型膜两个面上的保护膜,对好孔然后将离型膜套在压圈上的柱子上。



c. Finally, place the film-ring assembly back into the vat frame gently, then intall and tighten the fixing screws diagonally.  
最后将套好离型膜的压圈放回料槽,安装14颗螺丝并采用对角方式锁紧。

d. The installed release film is as shown.  
安装好的离型膜如下图。



#### Parameters 规格参数



尺寸:190mm\*266mm  
(Size)



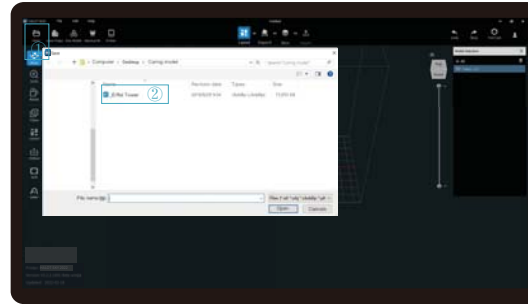
厚度:0.15-0.2mm  
(Thickness)



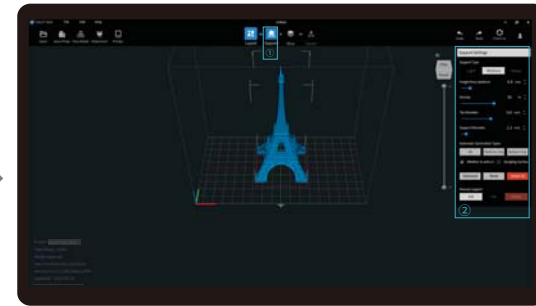
透光率:95%  
(Light Transmittance)

## 9. USB Disk Printing U盘打印

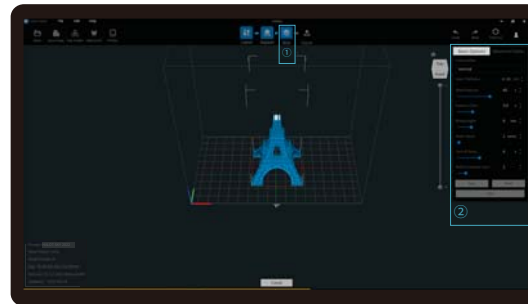
### 1. Slicer



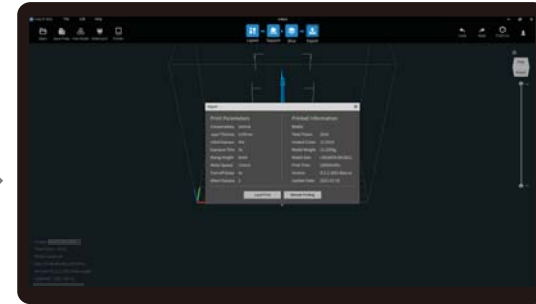
1. Open the slicer software of HALOT BOX, click "Open" on the top left of the screen and add model file;



2. If the model needs to add support, click the upper left icon ① to set corresponding parameters ②.



3. Click icon ① → Setting slice printing parameters ② → Click



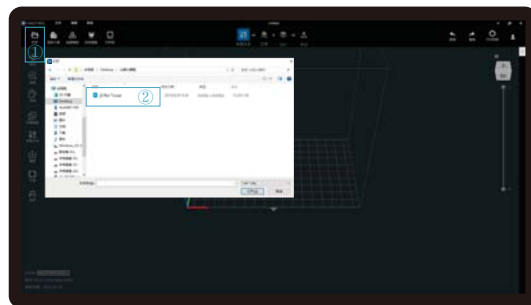
4. wait for slice to be finished → Select "Local Printing" to save the sliced file.



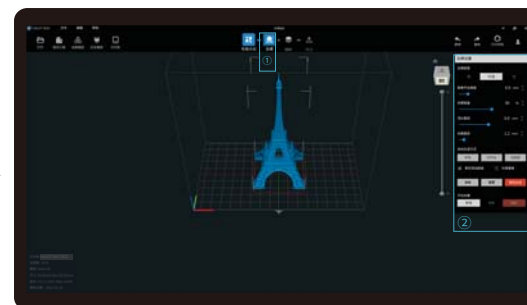
Note: The published UI of slicing software shall prevail for the interfaces of HALOT BOX .

## 9. USB Disk Printing U盘打印

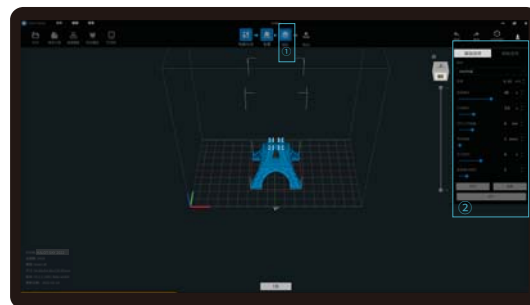
### 1. 切片



1. 打开HALOT BOX软件, 界面左方点击“打开”添加模型文件;



2. 根据模型如需添加支撑, 点击左上方图标①, 设置相应参数②;



3. 点击图标①→设置切片打印参数②→点击切片;



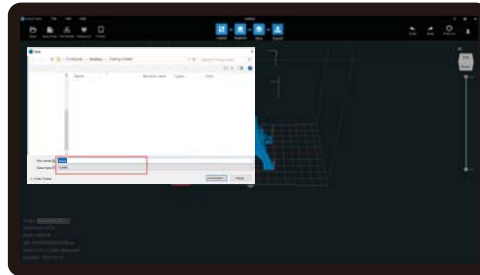
4. 等待完成切片后→选择“本地打印”另存切片完成的文件。



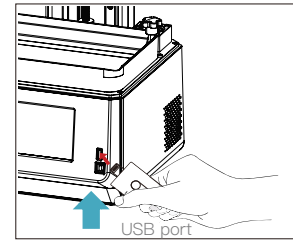
注意: HALOT BOX的界面均以发布的切片软件UI为准。

## 9.USB Disk Printing U盘打印

2. Print

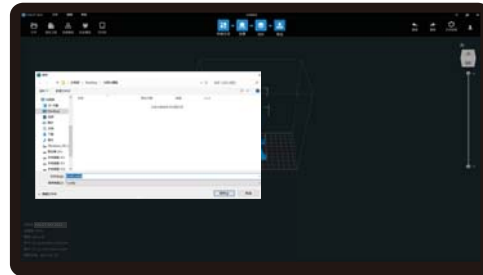


1. Generate cxdlp file and save the file to U disk

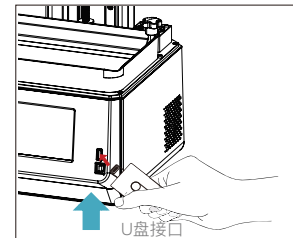


2. Insert the USB disk

2. 打印



1. 生成 cxdlp 文件→保存文件到U盘;



2. 插入U盘



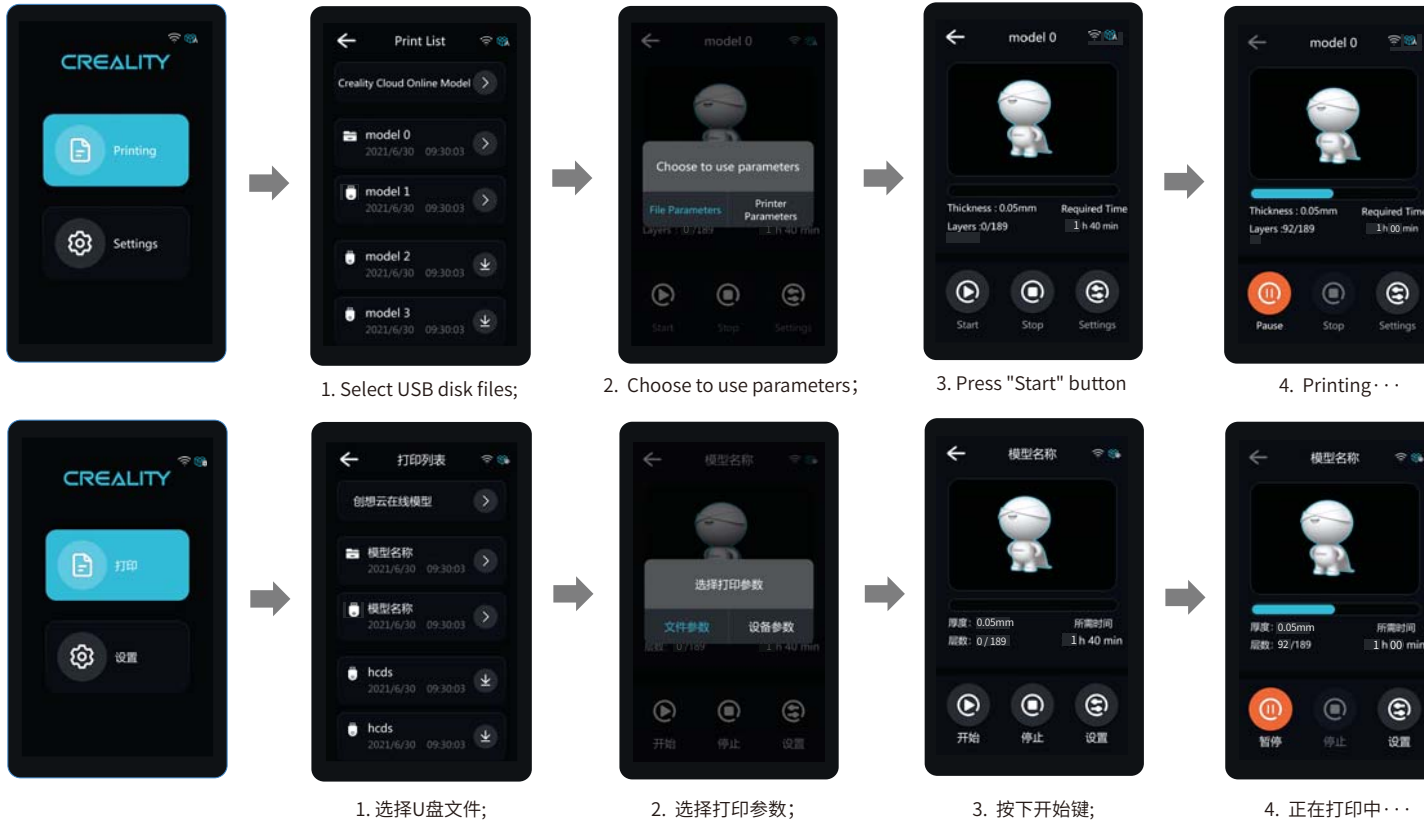
Note: The UI interface is for reference only, and shall be subject to the actual UI.  
注意: 界面仅供参考, 实际以UI为准。



Warning: During the printing process the machine can't be shaken, so as not to avoid influencing affect the printing quality.  
警告: 在打印过程中, 机器不能摇动, 以免影响打印质量。



## 9. USB Disk Printing U盘打印

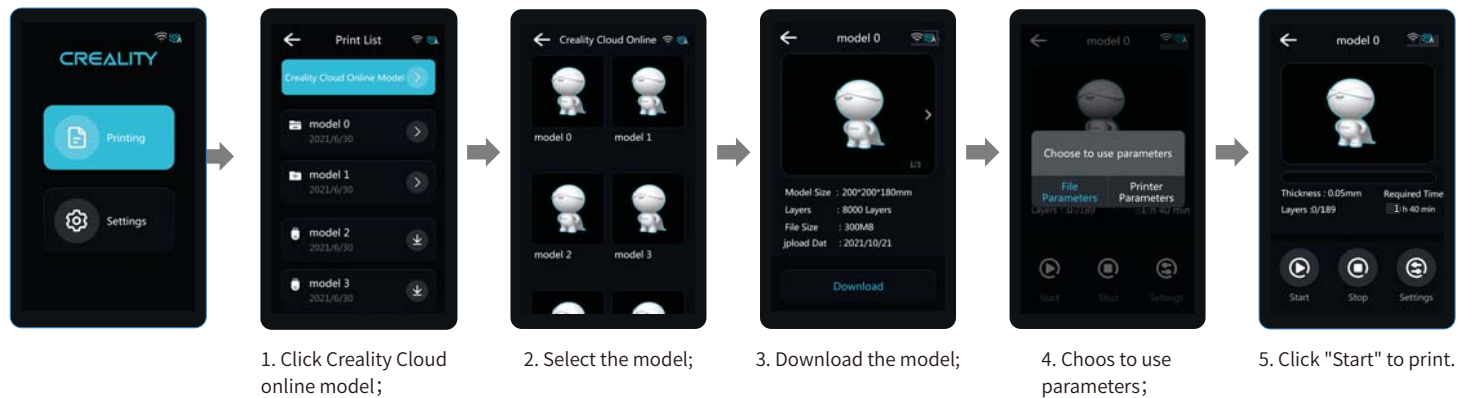


## 10. Creality Cloud Online 创想云在线打印

Make sure WiFi is correctly connected before using online printing

Steps: Settings → WiFi → Select the corresponding WiFi.

**Warm Tips:** ① Only 2.4GHz WiFi is applicable to the 3D printer, and it cannot be connect to 5GHz WiFi routers;  
② Only WPA-PSK/WPA2-PSK security protocol is applicable to the 3D printer, and other protocols may result in the failure to connect the printer to WiFi properly. To change the security protocol, users may change it in setting interface of the router.



Note: View and set printing parameters The UI interfacis only for reference the actual UI.

## 10. Creality Cloud Online 创想云在线打印

使用在线打印功能前请确保WiFi已正常连接,  
步骤:设置→WiFi设置→选择对应WiFi。

**温馨提示:** ①. 3D打印机设备WiFi仅支持2.4GHz的频率,不能连接5GHz频率的路由器;

②. 3D打印机设备WiFi仅支持WPA-PSK/WPA2-PSK安全协议,其他安全协议可能造成设备无法正常连接WiFi,如果用户需要更改安全协议,可以在路由器的设置页面进行修改。

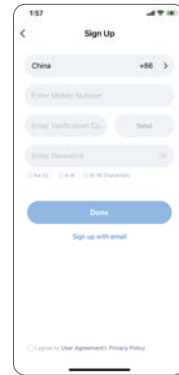


注意:查看、设置打印参数,界面仅供参考,实际以UI为准。

## 11. Creality Cloud App Print 创想云APP打印



1.Download



2.Register



3. Add equipment



4. Scan QR Code  
Settings → Detail →  
Connect to Creality Cloud → QR code



5. Device naming



6. Select model, set the printer and parameters, and click "Slice".



7. Upon completion of slicing, click "Printer".



8. Select device



9. Print progress

**Notes:**

1. The steps for adding devices vary for different mobile phone operating systems;
2. Set the correct area in "Settings - Other Settings - Language and Area".
3. Make sure WiFi is correctly connected before using online printing.

## 11. Creality Cloud App Print 创想云APP打印



1. 下载



2. 注册



3. 新增设备



4. 扫一扫

(设置→详细信息→绑定创想云→二维码)



5. 设备命名



6. 选择模型，设置机型及参数  
点击切片



7. 切片完成，点击打印



8. 选择设备



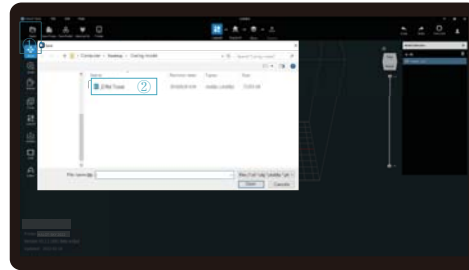
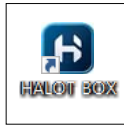
9. 打印进度

**注意：**

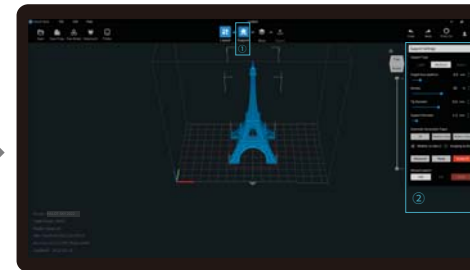
1. 不同手机操作系统添加设备步骤不同；
2. 在“设置-其他设置-语言及区域设置”中选择正确的对应区域；
3. 使用在线打印功能前请确保WiFi已正常连接。

## 12. WIFI Print 无线打印

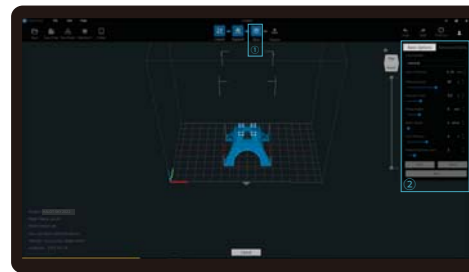
### 1. Slicer



1. Open the slicer software of HALOT BOX, click "open" on the left of the screen and add model file.



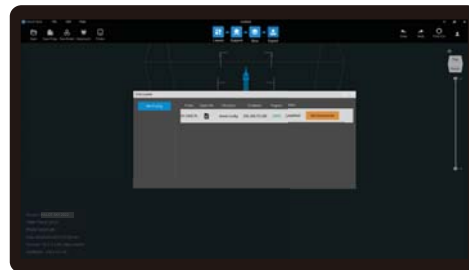
2. If the model needs to add support, click the upper left icon to set corresponding parameters.



3. Click icon ①→Setting slice printing parameters②→Click.



4. wait for slice to be finished→Select "Remote Printing" for WiFi printing.



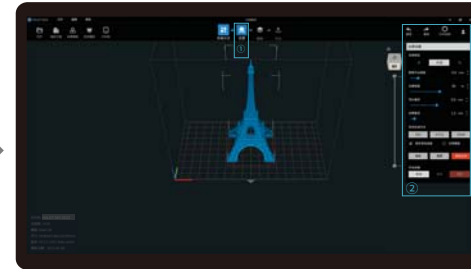
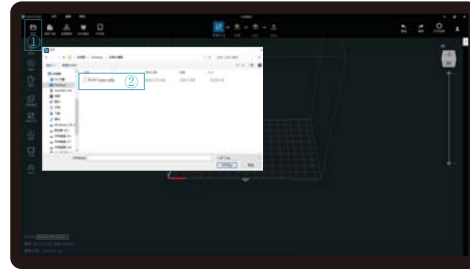
5. Once the transmission is over, select the file on the machine to start printing.



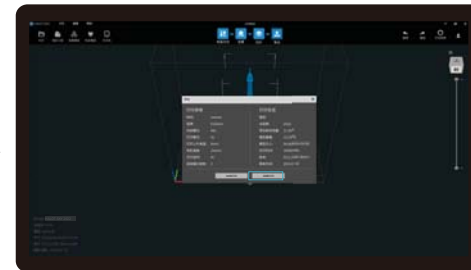
Note: Make sure the HALOT BOX and the printer are connected to the same WiFi.

## 12. WIFI Print 无线打印

切片

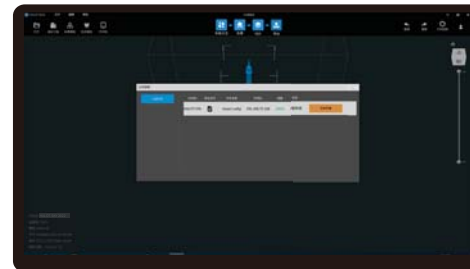


1. 打开HALOT BOX软件, 界面左方点击“打开”添加模型文件; 2. 根据模型如需添加支撑, 点击左上方图标①, 设置相应参数②;



3. 点击图标①→设置切片打印参数②→点击切片;

4. 等待完成切片后→选择“远程打印”进入WiFi打印;

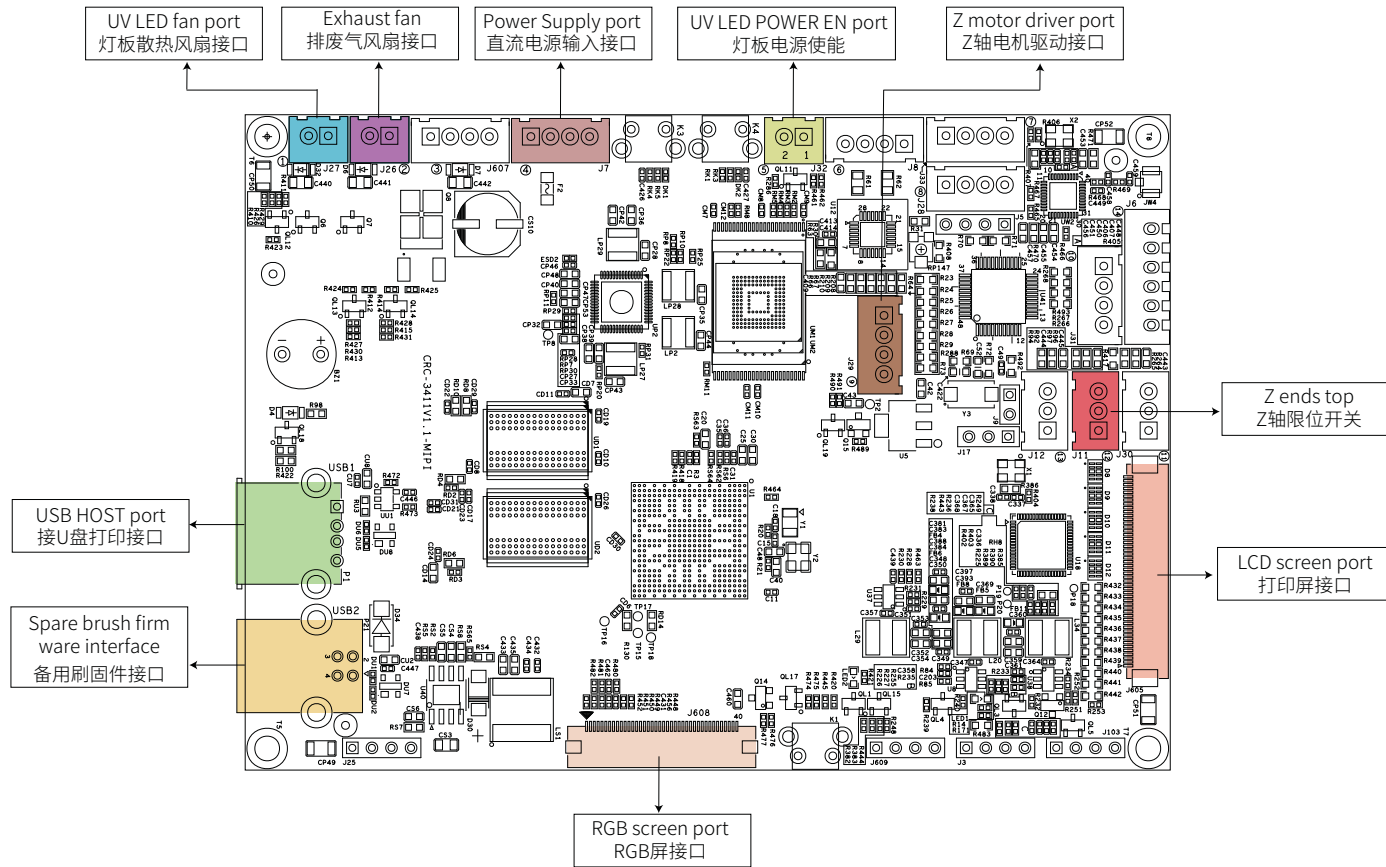


5. 传输完成后在机器上选择该文件启动打印。



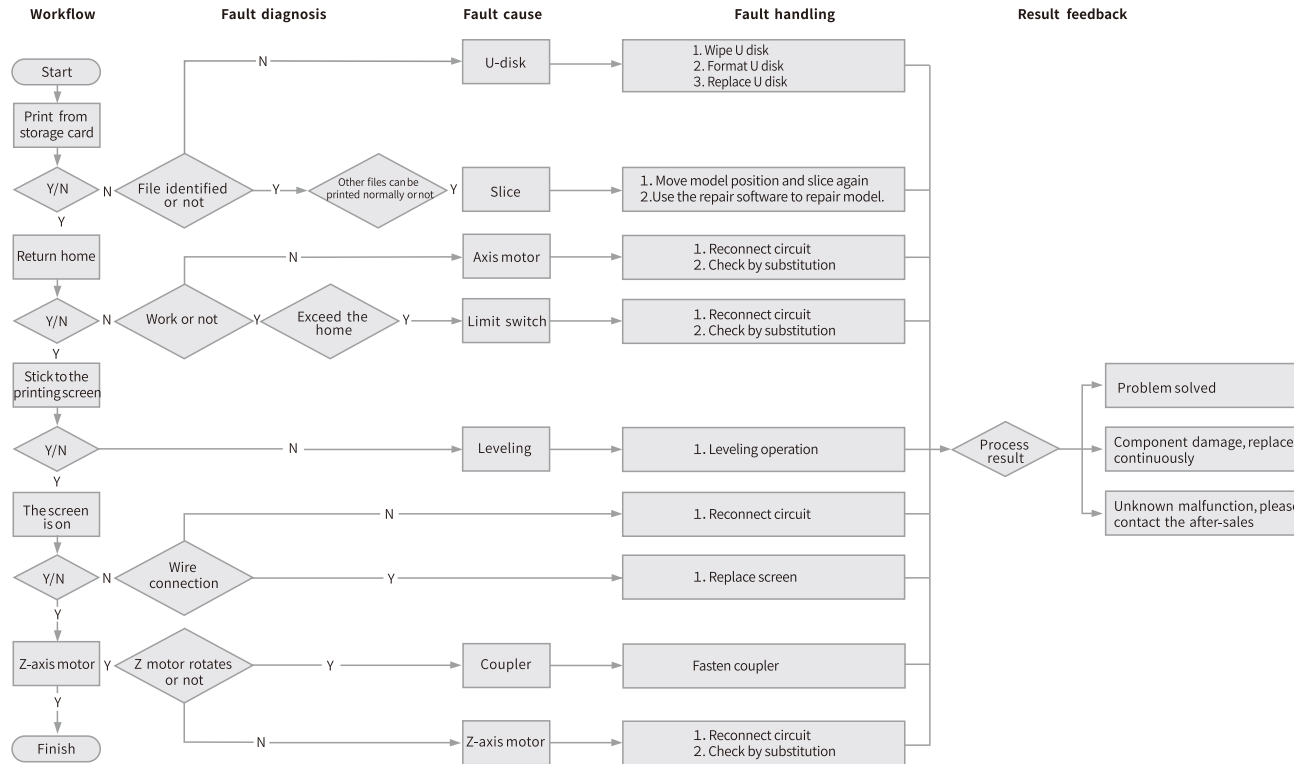
注意: 确保HALOT BOX与打印机连接同一WiFi。

### 13. Wiring Connection 电路接线

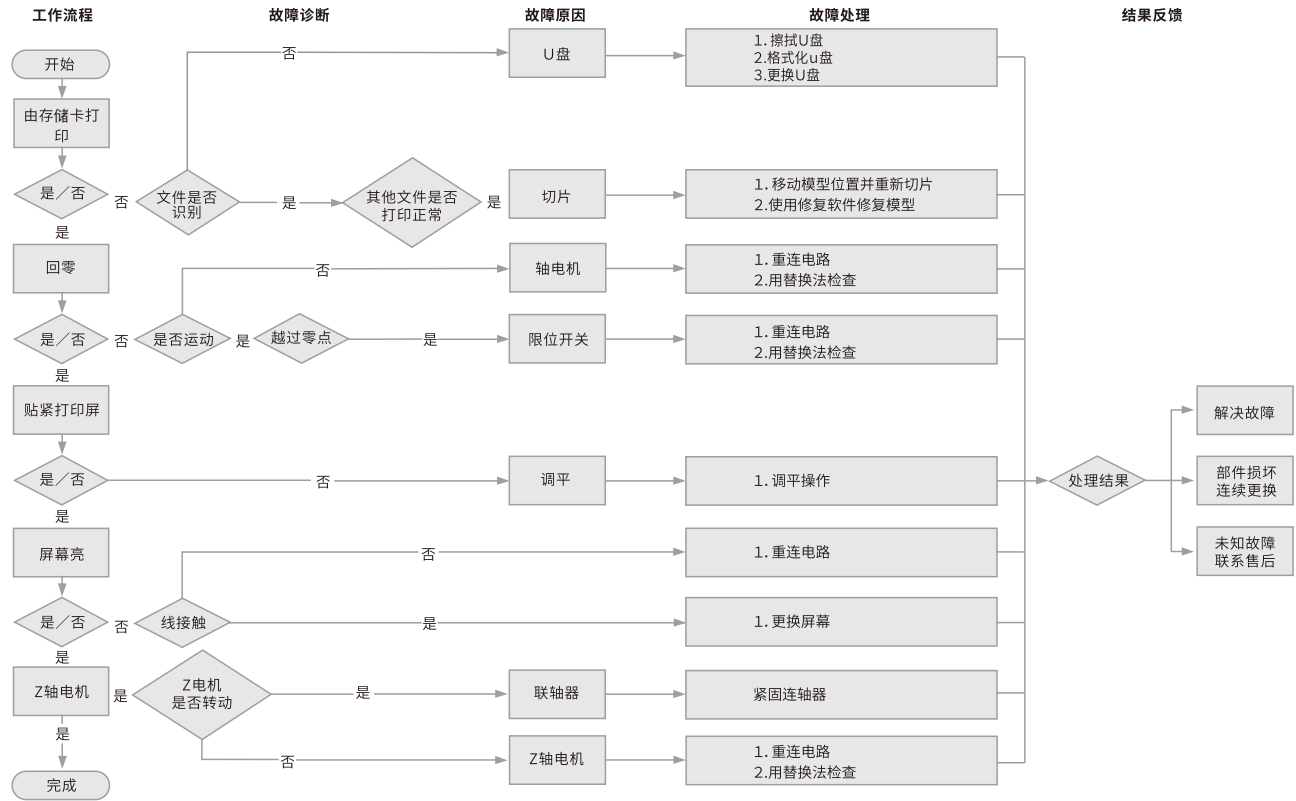




## 14.Troubleshooting



## 14. 故障检修



## 15. FCC Statement

### **FCC Caution:**

Any Changes or modifications not expressly approved by the party responsible for compliance could void the user's authority to operate the equipment.

This device complies with part 15 of the FCC Rules. Operation is subject to the following two conditions: (1) This device may not cause harmful interference, and (2) this device must accept any interference received, including interference that may cause undesired operation.

### **IMPORTANT NOTE:**

Note: This equipment has been tested and found to comply with the limits for a Class B digital device, pursuant to part 15 of the FCC Rules. These limits are designed to provide reasonable protection against harmful interference in a residential installation. This equipment generates, uses and can radiate radio frequency energy and, if not installed and used in accordance with the instructions, may cause harmful interference to radio communications. However, there is no guarantee that interference will not occur in a particular installation. If this equipment does cause harmful interference to radio or television reception, which can be determined by turning the equipment off and on, the user is encouraged to try to correct the interference by one or more of the following measures:

- Reorient or relocate the receiving antenna.
- Increase the separation between the equipment and receiver.
- Connect the equipment into an outlet on a circuit different from that to which the receiver is connected.
- Consult the dealer or an experienced radio/TV technician for help.

### **FCC Radiation Exposure Statement:**

This equipment complies with FCC radiation exposure limits set forth for an uncontrolled environment.

This equipment should be installed and operated with minimum distance 20cm between the radiator& your body.

Due to the differences between different machine models, the physical objects and the final images can differ. The final explanation rights shall be reserved by Shenzhen Crealty 3D Technology Co., Ltd.

因每款机型不同，实物与图可能有所差异，请以实物为准，最终解释权归深圳市创想三维科技股份有限公司所有。



Scan To Learn More  
扫码了解更多

**SHENZHEN CREALTY 3D TECHNOLOGY CO., LTD.**

Add: 18F, JinXiuHongDu Building, Meilong Blvd., Longhua Dist.,  
Shenzhen, China 518131

Official Website: [www.crealty.com](http://www.crealty.com)

Tel: +86 755-8523 4565

E-mail: [info@creality.com](mailto:info@creality.com) [cs@creality.com](mailto:cs@creality.com)

**深圳市创想三维科技股份有限公司**

深圳市龙华区民治街道新牛社区梅龙大道锦绣鸿都大厦18F

公司网站: [www.cxsw3d.com](http://www.cxsw3d.com)

服务热线: 400 6133 882 0755-8523 4565



® 211-210605