



## 3D Printer User Manual

3D打印机用户使用手册

V1.0

### Dear Consumers,

Thank you for choosing our products. For the best experience, please read the instructions before operating the Printer. Our teams will always be ready to render you the best services. Please contact us via the phone number or e-mail address provided at the end when you encounter any problem with the Printer.

For a better experience in using our product, you can also learn how to use the printer in the following ways:

View the accompanied instructions and videos in the U disk .

Visit our official website [www.creality.com](http://www.creality.com) to find relevant software/hardware information, contact details and operation and maintenance instructions.

### 尊敬的用户：

感谢您选择创想三维的产品。为了您使用方便，请您在使用之前仔细阅读本说明书，并严格按照说明书的指示进行操作。

创想三维团队时刻准备为您提供优质的服务。在使用过程中无论遇到什么问题，请按照说明书结尾所提供的电话、邮箱与我们进行联系。为了您能够更好地体验我们的产品，您还可以从以下方式获取设备操作知识：

随机使用说明：您可以在U盘内找到相关使用说明及视频。

您还可以登陆创想三维官网([www.cxsw3d.com](http://www.cxsw3d.com))寻找相关软硬件、联系方式、设备操作、设备保养等信息。

### Firmware Upgrade

Please login the official website <https://www.creality.com/download>, switch the language and select the relevant printer and model and download the required firmware, you can use it after the installation is finished.

### 固件升级

请您登录官网<https://www.cxsw3d.com>，点击首页→服务支持→下载所需固件，安装完成后即可使用。

## NOTES 使用须知

- 1 Do not use the printer any way other than described herein in order to avoid personal injury or property damage.
- 2 Do not place the printer near any heat source or flammable or explosive objects. We suggest placing it in a well-ventilated, low-dust environment.
- 3 Do not expose the printer to violent vibration or any unstable environment, as this may cause poor print quality.
- 4 Please use recommended resin to in case damage of machine.
- 5 Do not use any other power cable except the one supplied. Always use a grounded three-prong power outlet.
- 6 Please do not open the plastic cover during usage, otherwise the printing will be interrupted.
- 7 Do not wear cotton gloves when operating the printer. Such cloths may become tangled in the printers moving parts leading to burns, possible bodily injury, or printer damage.
- 8 Please wait a moment after the print is finished. And please wear gloves to take out the print by tools.
- 9 Clean the printer frequently. Always turn the power off when cleaning, and wipe with a dry cloth to remove dust, adhered printing plastics or any other material off the frame, guide rails, or wheels. Use glass cleaner or isopropyl alcohol to clean the print surface.
- 10 Children under 10 years should not use the printer without supervision.
- 11 This machine is equipped with a security protection mechanism. Do not manually move the nozzle and printing platform mechanism manually while booting up, otherwise the device will automatically power off for safety.
- 12 Users should comply with the laws and regulations of the corresponding countries and regions where the equipment is located (used), abide by professional ethics, pay attention to safety obligations, and strictly prohibit the use of our products or equipment for any illegal purposes. Creality will not be responsible for any violators' legal liability under any circumstance.

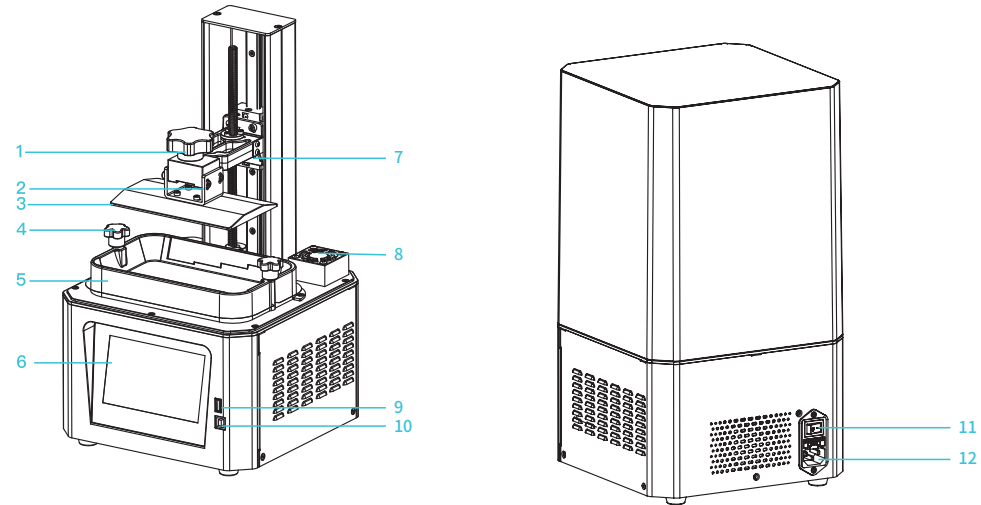
- 1 请勿尝试任何使用说明中没有描述的方法来使用本机, 避免造成意外的人身伤害和财产损失;
- 2 请勿将本机放置在易燃易爆物中或高热源附近, 请将本机放置在通风、阴凉、少尘的环境内;
- 3 请勿将打印机放置在振动较大或者其他 稳定的环境内, 机器晃动会影响打印机打印质量;
- 4 建议使用厂家推荐耗材, 以免造成机器损坏;
- 5 请勿在安装过程中使用其他产品电源线代替, 请使用本机附带的电源线, 电源插头需接插在带有地线的三孔插座;
- 6 请勿在操作打印机工作时打开打印机面盖, 以免影响打印;
- 7 请勿在操作打印机时戴棉手套, 以防可动部件对人身造成卷入挤压和切割伤害;
- 8 在打印完毕后稍等片刻, 戴上手套后再取下打印平台, 借助工具将平台上的模型取下, 清理时请勿直接用手触摸;
- 9 常做产品维护, 定期在断电的情况下, 用干布对打印机做机身清洁, 拭去灰尘和粘结的打印材料、导轨上的异物;
- 10 年龄在10岁以下的儿童, 请勿在没有人员监督的情况下使用本机, 以免造成人身伤害;
- 11 本机设有安全保护机制, 请勿在开机状态下手动快速移动打印平台机构, 否则设备会自动断电关机保护;
- 12 使用者应遵守设备所在地(使用地)相应国家、地区法律法规, 恪守职业道德, 注意安全义务, 严禁将我司的产品或设备使用在任何非法用途上。如有违反者所应承担的相关法律责任我司概不负责。

## Contents目录



Introduction 设备简介	01-01
Parameters 设备参数	02-02
Parts List 零部件清单	03-03
Assemble the 3D Printer 组装3D打印机	04-04
Use the 3D Printer 使用3D打印机	05-10
Start Printing 首次打印	11-14
Control remote printing 远程控制打印	15-15
Wiring Connection 电路接线	16-16
Troubleshooting 故障检修	17-18
FDM 3D PRINTING FILAMENTS 3D打印耗材	19-24
After sales service card 售后服务卡	25-27
Warranty Card 保修卡	29-30

## 1. Introduction 设备简介



1 Hexalobular socket screw  
梅花胶头拧螺丝

2 Leveling screw  
调平螺丝

3 Platform plate  
平台板

4 Hexalobular socket screw  
梅花胶头手拧螺丝

5 Resin vat  
料盘

6 Touch screen  
触摸屏

7 Limit sensor  
限位感应片

8 Air filter  
空气过滤器

9 USB port  
USB接口

10 Spare square Port USB  
interface 备用方口USB接口

11 Power switch  
电源开关

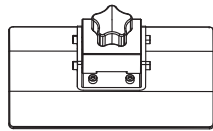
12 Power receptacle  
电源母座

## 2. Equipment parameters 设备参数

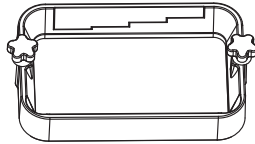


Basic Parameters 基本参数	
Model   型号	HALOT-ONE
Software language   中英切换	English   中文
Print method   打印方式	U disk   U盘
X/Y-axis resolution   X、Y分辨率	1620*2560
Z-axis resolution   Z轴精度	0.03mm-0.05mm(layer thickness   即层厚)
Print speed   打印速度	1-4S/ (layer height   即层高)
Special filaments   专用耗材	Common rigid photosensivie resin, Standard resin, Hight hardness, High toughness, Dental model resin. 普通刚性光敏树脂、标准树脂、弹性树脂、高硬度、高韧性树脂、牙模树脂
Light source configuration   光源配置	Integral light source (wavelength 405nm)   积分式光源(波长405nm)
Operation system   操作系统	Windows XP and above systems   windows XP以上系统
Nominal power   额定功率	100W
Print size   成型尺寸	127*80*160mm(length,width and height)   127*80*160mm (长*宽*高)
Machine size   设备尺寸	221*221*404mm
Package size   包装尺寸	295*295*545mm
Machine weight   机器重量	7.1KG
Gross weight   机器毛重	8.8KG
Display screen   显示屏幕	5.0 inch   5.0英寸

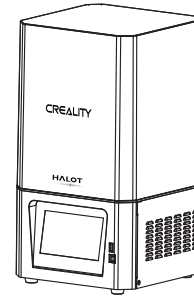
### 3. Package Content 零件清单



1 Print platform | 打印平台 x 1



2 Resin vat | 料盘 x 1



3 3D printer | 打印机 x 1



#### Tool list 工具包清单



1 U disk x 1  
U盘



2 2#,2.5#,3#Screwdriver x 1  
2#,2.5#,3#螺丝刀



3 Brush x 1  
油漆刷



4 Paper funnel x 4  
纸漏斗



5 Release film x 1  
离型膜



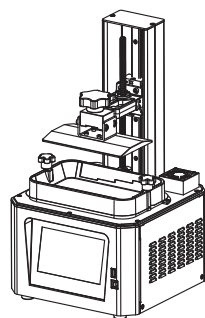
6 Metal blade x 1  
金属铲刀



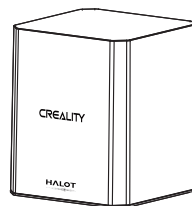
7 Power adapter x 1  
电源线

Tips: the above accessories are for reference only, in kind prevail! 注意: 以上配件仅供参考, 请以实物为准!

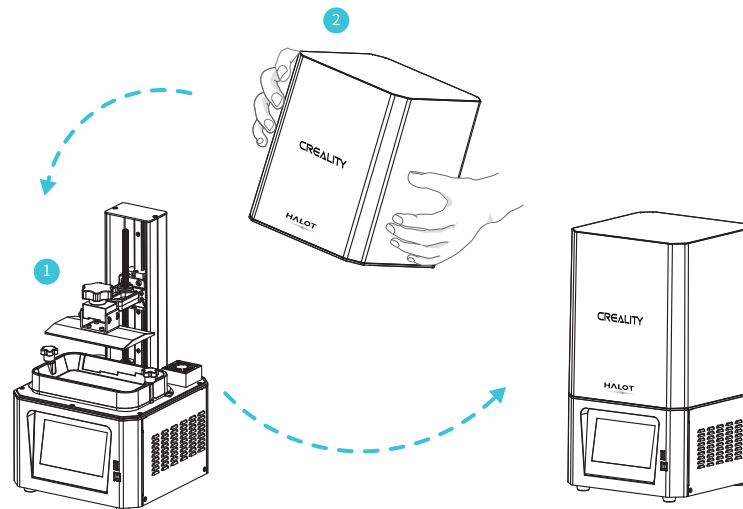
#### 4. Assemble the 3D Printer 组装3D打印机



1 Machine body | 主机 x 1



2 Plastic cover | 上盖 x 1

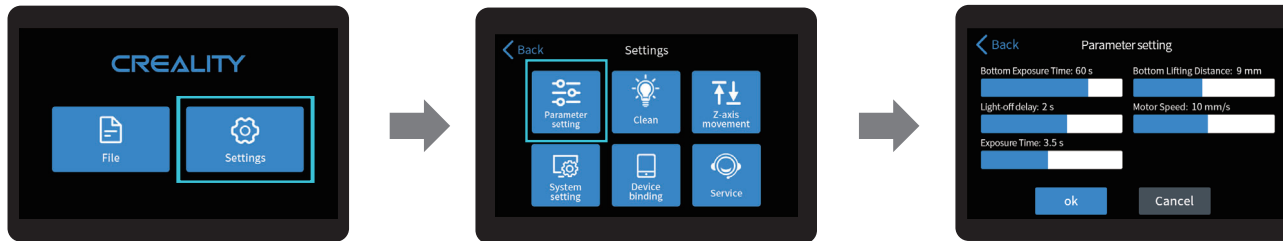


Note: put the plastic cover on the machine body and the installation is completed.  
注意: 上盖嵌入主机即安装完成



## 5. Interface Information 界面信息

### Setting



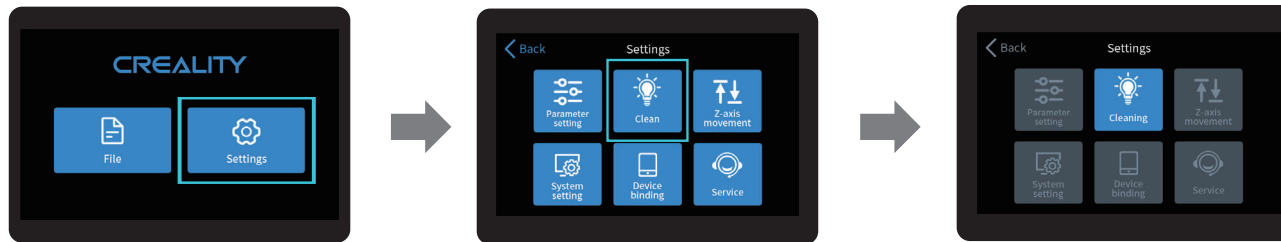
### 设置



Note: The UI information is only for reference, the actual UI may be different  
注意：界面仅供参考，实际以UI为准

## 6. Interface Information 界面信息

### Setting

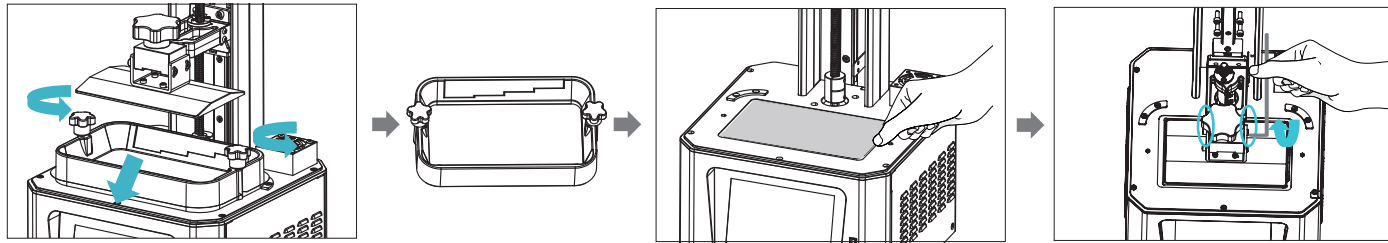


### 设置



Note: The UI information is only for reference, the actual UI may be different.  
注意：界面仅供参考，实际以UI为准。

## 7. Level Platform 调平台 1



1. First raise the platform, then loosen rubber screws on the left and right sides of the resin vat, and take out the resin vat.  
进行打印平台的校准, 首先上升平台, 拧松料槽左右两侧胶头手拧螺丝, 将料槽取出。

2. Loosen the four screws of the connecting plate of the molding platform board, press the calibration card against the printing screen, press Setting → Z-axis movement → leveling, and check whether the platform fits evenly with the calibration card. 松开成型平台板连接板的四颗螺丝, 将卡片纸贴紧打印屏, 按设置 → Z轴运动 → 调平, 检查平台是否与卡片纸均匀贴合;

3. After confirming that the calibration cards fit evenly, lock the four screws of the platform.  
确认卡片纸均匀贴合后, 锁紧平台的四颗螺丝。



Note: The printing platform has been leveled at the factory. If it needs leveling due to transportation or other reasons, please follow the steps below to adjust the printing platform.

注意: 打印平台出厂时已调平, 若因运输或其他原因需要调平, 可以进行以上步骤进行打印平台调平。

## 8. Level Platform 调平台 2

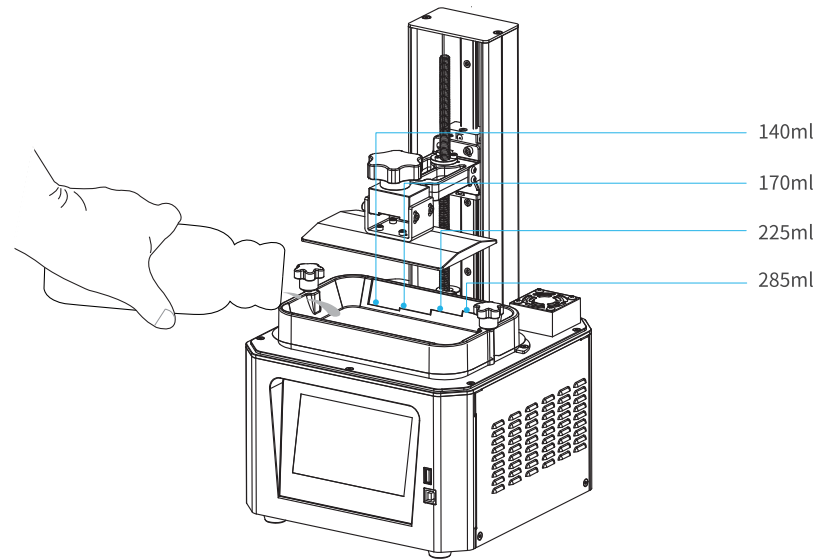


Note: The UI information is only for reference, the actual UI may be different.  
注意：界面仅供参考，实际以UI为准。

## 9. Load Resin 装料

Pour the UV photosensitive resin into the resin vat. The slot capacity is 140ml/170ml/225ml/285ml.

将3D打印机UV光敏树脂倒入料盘,槽位容量分别:140ml/170ml/225ml/285ml。



### Tips: How to change resin:

Take out the resin vat slowly, pour out the remaining resin into the container, clean the resin vat, pour in new resin, and then install the resin vat to the machine.

提示:如何更换耗材?

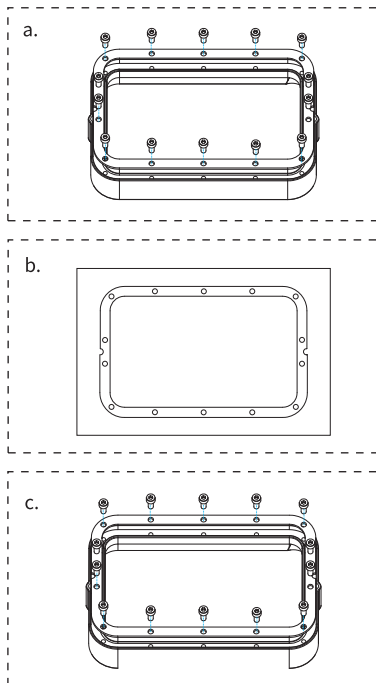
将料盘缓缓取出,把剩余树脂倒入容器,清洗干净料盘,重新倒入新树脂,再把料盘安装到机器即可。



Tips: Resin may cause skin irritation or an allergic skin reaction. please wear gloves before use to avoid direct contact with the skin.

提示:请戴上手套方可进行装料,光敏树脂为刺激性材料,避免接触到皮肤。

## 10. Release Membrane Replacement 离型膜拆换



a. First, remove the 14 screws at the bottom of the tray and take out the broken release film.

首先拆卸料槽底部的14颗螺丝,取出坏的离型膜

b. Then place the release film between the two steel frames.

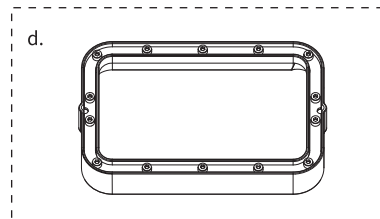
然后将离型膜放置在两个钢圈之间

c. Finally, put the assembled steel frame back into the tray and tighten 14 screws.

最后将安装完的钢圈放回料槽,锁上14颗螺丝

d. The installed release film is as show.

安装好的离型膜如下图



Parameters  
规格参数



(Size)尺寸:140mm\*200mm



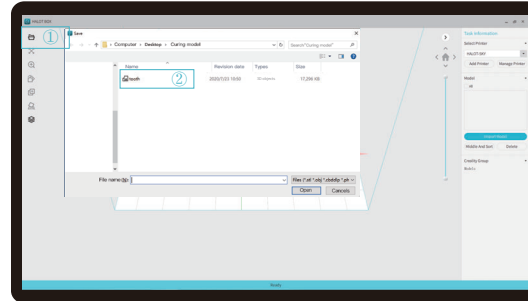
(Thickness)厚度:0.15-0.2mm



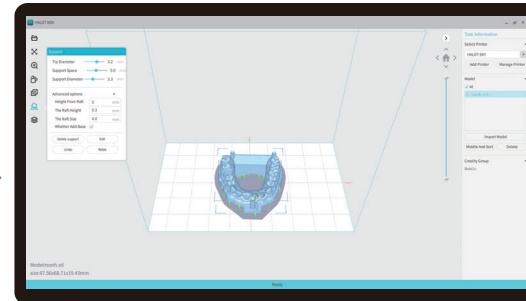
透光率:95%  
(Light Transmittance)

## 1.1. Start Printing 首次打印

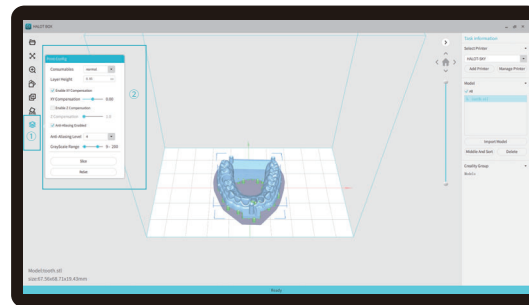
### 1. Slice



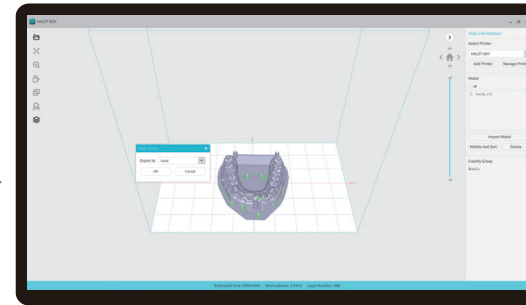
1. Open the slice software of LCD 3D printer, click“ open” on the left of the screen and add model file.



2. If the model needs to add support, click the upper right icon to set corresponding parameters.



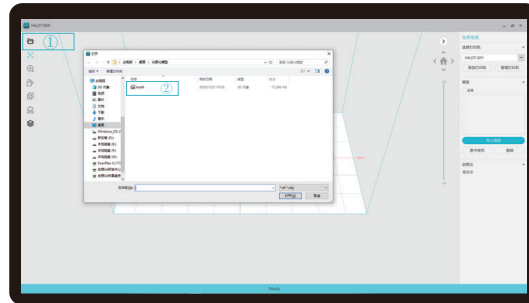
3. Click icon ①→Setting slice printing parameters②→ Click“ Slice” ( recommend to set parameters of bottom layer as 5-20).



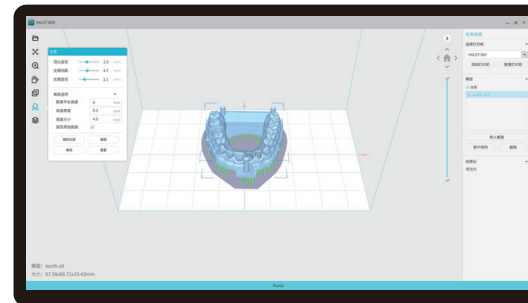
4 waiting for slice to be finished→save the sliced file  
You are welcome to find more details of slicing tutorial on the official website [www.creality.com](http://www.creality.com)).

## 12. Start Printing 首次打印

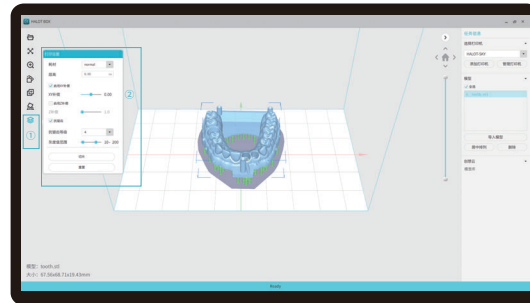
### 1. 切片



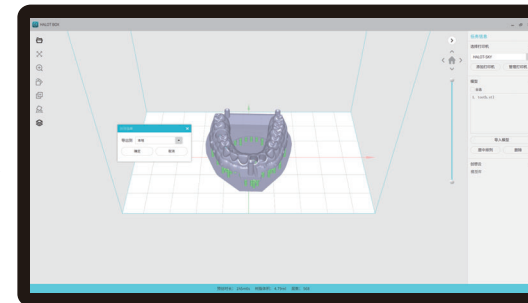
1. 打开LCD光固化3d打印切片软件, 界面左方点击“打开”添加模型文件;



2. 根据模型如需添加支架, 点击右上方图标, 设置相应参数;



3. 点击图标①→设置切片打印参数②→点击切片

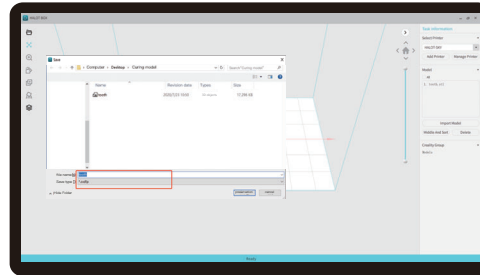


4. 等待完成切片后→另存切片好的文件。  
(\*切片教程详见官网切片视频[www.cxsw3d.com](http://www.cxsw3d.com))

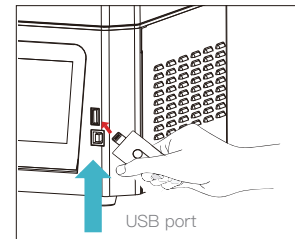


### 13. Start Printing 首次打印

2. Print

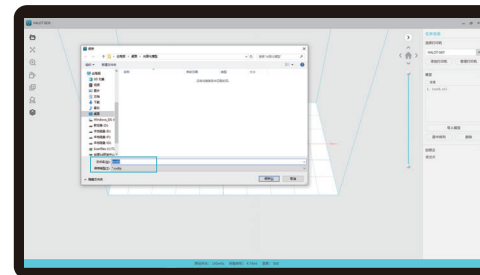


1. Generate cxdlp file, and save the file to U disk.

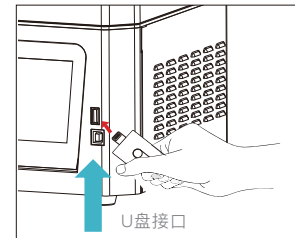


2. Insert the U disk → press the print button.

2. 打印



1. 生成 cxdlp 文件 → 保存文件到 U 盘

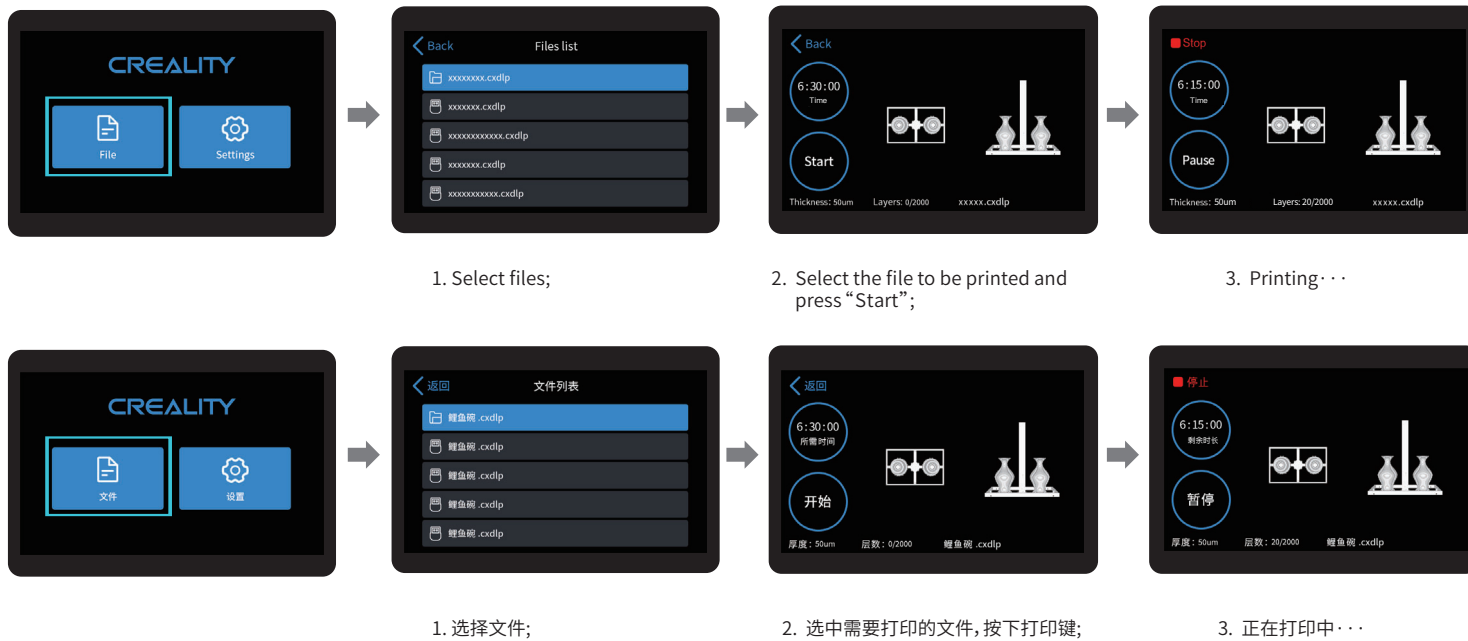


2. 插入 U 盘 → 按下打印按键



Warning: During the printing process, it is forbidden to plug or unplug the U disk.  
警告: 在打印过程中, 禁止插拔 U 盘。

## 14. Start Printing 首次打印



Note: The UI information is only for reference, the actual UI may be different.  
注意: 界面仅供参考, 实际以UI为准。

## 15. Control remote printing 远程控制打印



1.Download  
1. 下载



2.Register  
2. 注册



3.Log in  
3. 登录



4. Add equipment  
4. 新增设备



5. Scan QR Code  
5. 扫一扫  
(机器界面设置→设备绑定→二维码)



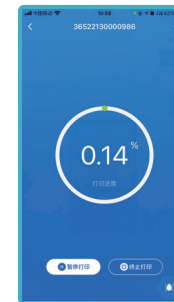
6. Device naming  
6. 设备命名



7. Select device  
7. 选择设备

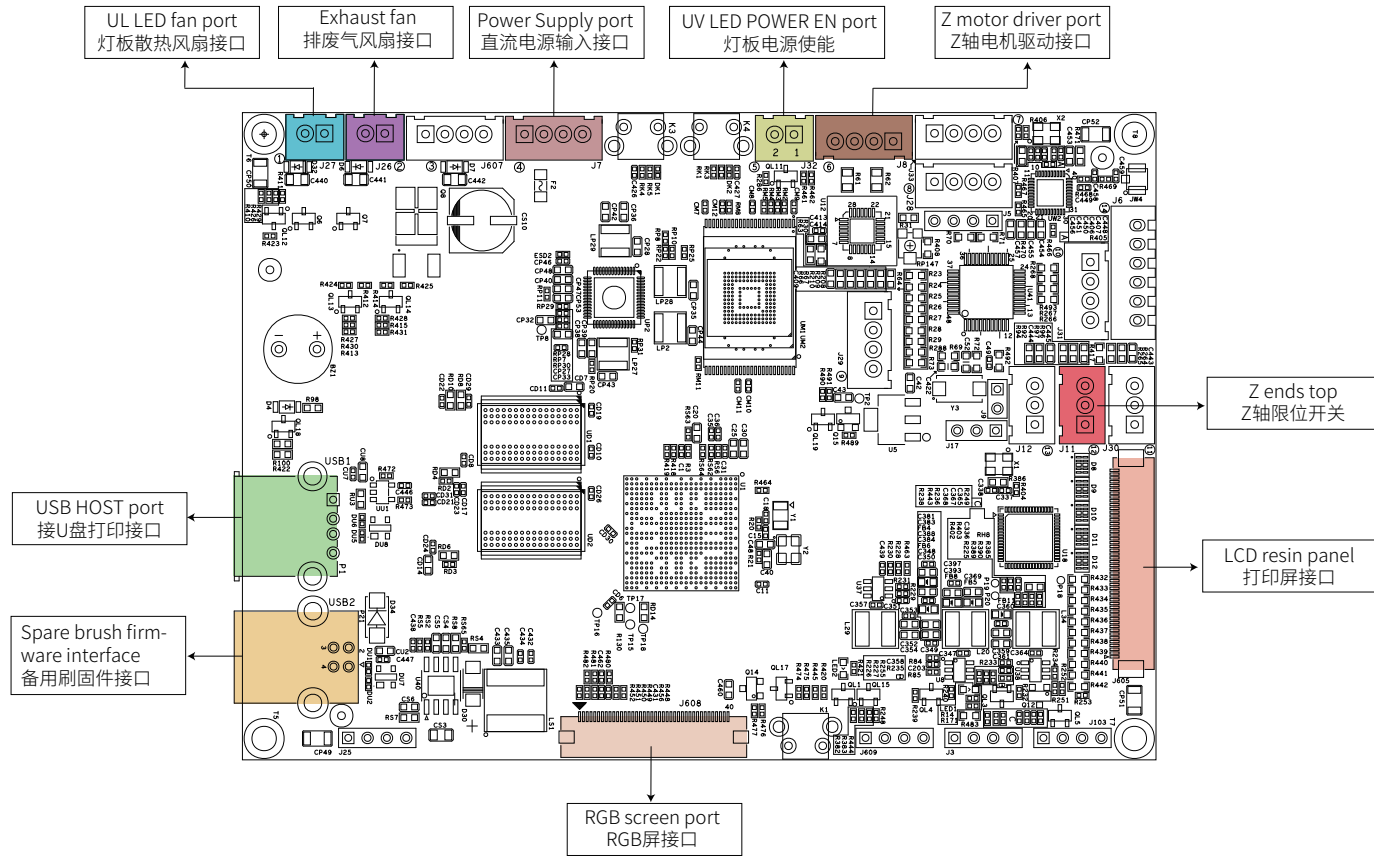


8. check printing status  
8. 查看打印状态

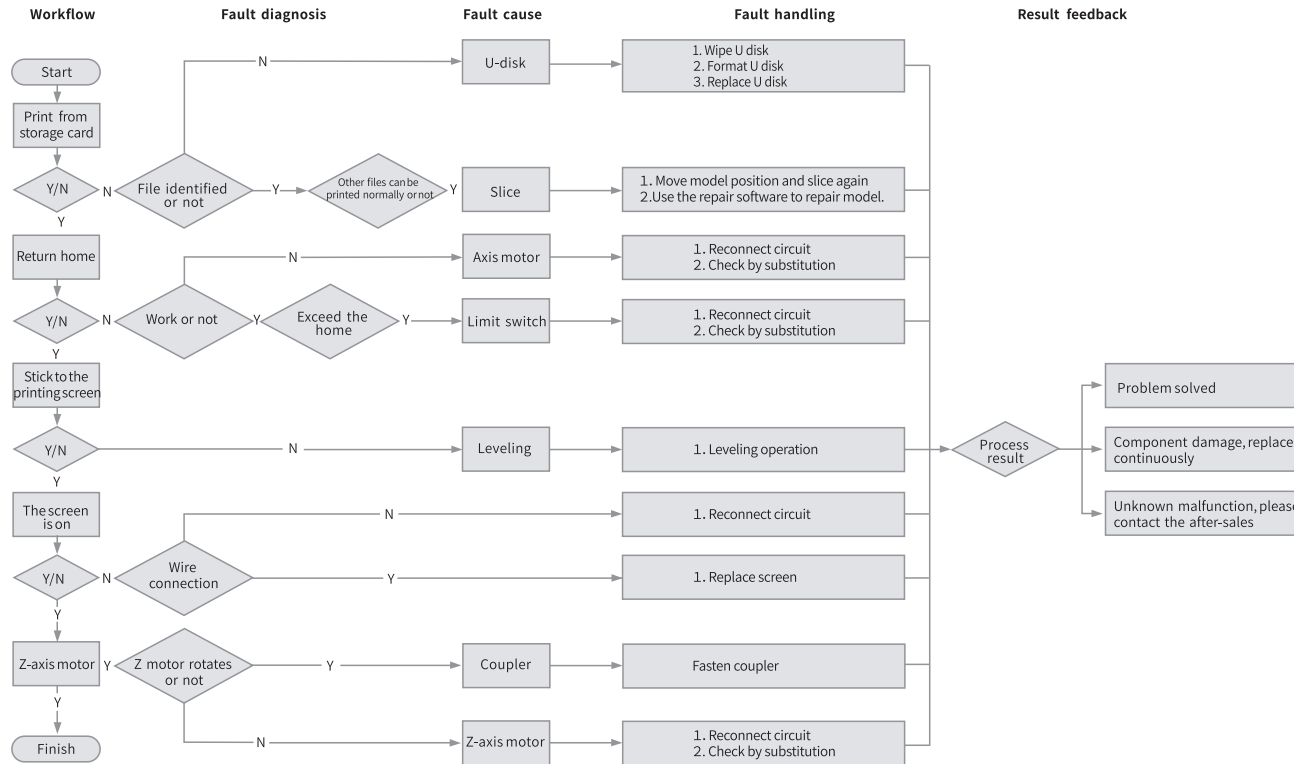


9. Print Progress  
9. 打印进度

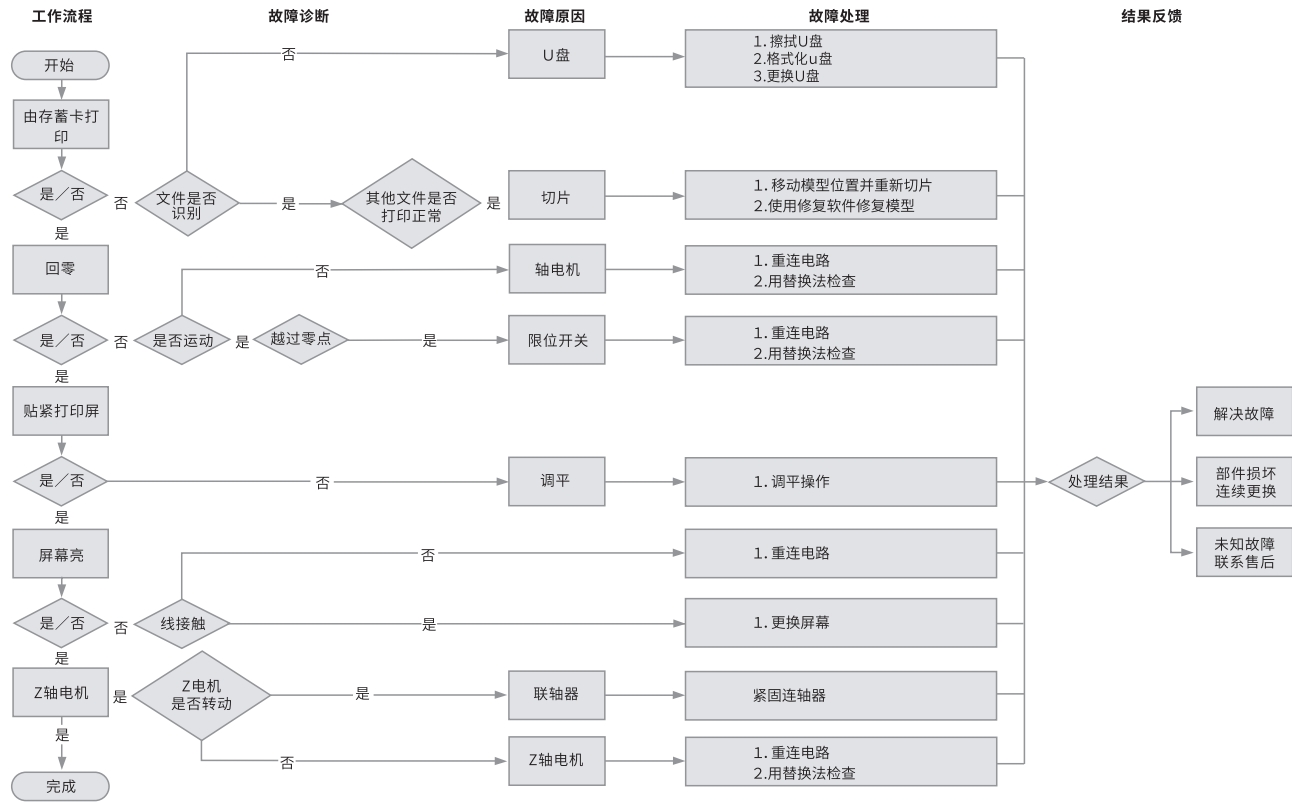
## 16. Wiring Connection 电路接线



## 17.Troubleshooting



## 18. 故障检修



## FDM 3D PRINTING FILAMENTS



HP-PLA

Upgraded environmentally friendly formula, matte effect, high toughness, and fine printing. The raw materials are imported from the United States, besides, there are rich colors for customers to choose.



CR-PLA CR-PETG  
CR-ABS CR-TPU

Targeting at mid-end users, CR series is with transparent tray plus black-white color box design. Its slight tolerance in wire diameter contributes to stable printing quality. CR series meets your demands of daily design and prototype making.



HC-PLA HC-PETG  
HC-ABS HC-TPU

HC series is cost-efficient. It's widely applicable to general FDM printer product designs on the market to meet your daily design and different prototyping needs.



EN-PLA EN-PETG  
EN-ABS EN-TPU

Ender series is widely applied to general FDM printer design, which meet customers' needs of daily design and different prototyping needs.

## 3D PRINTER UV SENSITIVE RESIN

### Standard Resin

Low shrinkage, fast printing speed, almost odorless, and it's equipped with rigidity and toughness, suitable for printing common product prototypes and display models, that's also highly compatible with LCD printers.

### Low Odor Resin

Low odor, high precision, detail textures are very expressive. Good fluidity, high printing success rate. Rich colors, to meet the customer's color needs, preferred for animation manual, craft furnishing industry, etc..

### ABS Like Resin

With high hardness, high toughness of physical properties and strong impact resistance, it can be directly drilled on the finished models, mainly used in industrial prototype and other fields.

### Dental Cast Resin

Low shrinkage, due to the low shrinkage characteristics, the size is more accurate. It's not easy to deform under pressure after molding. Used for making porcelain teeth.

### Elastic Resin

Elastic Resin features good elasticity after high-strength extruding or stretching, widely applied to damping and contacting surfaces, etc., preferred to be used by people full of originality and ideas in design.

### Water Washable Resin

The model can be washed with water directly, and it's safe, environmentally friendly, with high surface accuracy, short cleaning time and low material cost. Water Washable Resin is currently one of the favorite new materials for schools, educational institutions and printing enthusiasts.

### Dental Mode Resin

The surface hardness is extremely high, scratch-resistant, and has low shrinkage characteristics. It is mainly used in dental implant restoration and invisible braces printing in medical dentistry.

### Toughness Resin

Toughness Resin is a medium-hard, wear-resistant, and repeatedly stretchable material. It is used in parts which need to be repeatedly stretched in friction devices.

### High Temperature Resin

High Temperature Resin is mainly used in making high temperature rubber molds, which can withstand temperatures of about 200°C without cracking and maintain good strength, stiffness and thermal stability.

### Jewelry Cast Resin

Widely applied to jewelry industry. Excellent combustion performance, low expansion coefficient, combustion without residue. Forming process is stable without deformation. The finished product has smooth surface and high precision.

## 20. UV sensitive resin parameter information

Related Parameters	Standard Resin	ABS Like Resin	Dental Cast Resin	Elastic Resin	Water Washable Resin	Dental Mode Resin	Toughness Resin	High Temperature Resin	Jewelry Cast Resin
Viscosity	150-250MPa·s (NDJ-8S Rotational Viscometer (25°C))	200-350MPa·s (NDJ-8S Rotational Viscometer (25°C))	50-170MPa·s (NDJ-8S Rotational Viscometer (25°C))	300-1000MPa·s (NDJ-8S Rotational Viscometer (25°C))	100-350MPa·s (NDJ-8S Rotational Viscometer (25°C))	150-300MPa·s (NDJ-8S Rotational Viscometer (25°C))	150-300MPa·s (NDJ-8S Rotational Viscometer (25°C))	150-300MPa·s (NDJ-8S Rotational Viscometer (25°C))	100-150MPa·s (NDJ-8S Rotational Viscometer (25°C))
Absorption Band	355nm-410nm	355nm-410nm	355nm-410nm	385nm-410nm	385nm-410nm	355nm-410nm	355nm-410nm	355nm-410nm	355nm-410nm
Liquid Density	1.05-1.25g/cm <sup>3</sup> (Density meter (25°C))	1.05-1.13g/cm <sup>3</sup> (Density meter (25°C))	1.05-1.25g/cm <sup>3</sup> (Density meter (25°C))	1.05-1.25g/cm <sup>3</sup> (Density meter (25°C))	1.05-1.25g/cm <sup>3</sup> (Density meter (25°C))	1.05-1.25g/cm <sup>3</sup> (Density meter (25°C))	1.05-1.25g/cm <sup>3</sup> (Density meter (25°C))	1.05-1.25g/cm <sup>3</sup> (Density meter (25°C))	1.05-1.13g/cm <sup>3</sup> (Density meter (25°C))
Flexural Modulus	1.882-2.385Mpa	1.192-2.525Mpa	1.192-2.525Mpa	1.882-2.385Mpa	1.882-2.385Mpa	1.882-2.385Mpa	1.882-2.385Mpa	1.882-2.385Mpa	1.192-2.525Mpa
Bending Strength	59-70MPa	68-80MPa	49-58MPa	40-70MPa	40-70MPa	59-70MPa	40-70MPa	59-70MPa	49-58MPa
Heat Distortion Temperature	80°C	80°C	75°C	80°C	80°C	80°C	80°C	220°C	65°C
Thermal Expansion Coefficient	95*E-6	95*E-6	95*E-6	95*E-6	95*E-6	95*E-6	95*E-6	95*E-6	95*E-6
Volume Shrinkage	3.72-4.24%	3.72-4.24%	1.88-2.45%	3.72-4.24%	3.72-4.24%	1.56-1.95%	3.72-4.24%	3.72-4.24%	4.06-5.08%
Linear Shrinkage	1.05-1.35%	1.05-1.35%	0.8-1%	1.05-1.35%	1.05-1.35%	0.85-1.05%	1.05-1.35%	1.05-1.35%	1.05-1.35%
Tensile Strength	36-52MPa	42-62MPa	42-62Mpa	30-52MPa	30-52MPa	42-62MPa	30-52MPa	36-52MPa	42-62MPa
Tensile Modulus	1.779-2.385MPa	1.86-2.645MPa	1.86-2.645MPa	1.779-2.385MPa	1.779-2.385MPa	1.779-2.385MPa	1.779-2.385MPa	1.779-2.385MPa	1.86-2.645MPa
Elongation at Break	11%-20%	11%-21%	11%-20%	200%	120%	11%-20%	130%	11%-20%	11%-20%
Shore Hardness	84D	75-80D	80-88D	20-30D	80-85D	82D	65-75D	86D	65D
Glass Transition Temperature	100°C	100°C	78°C	100°C	100°C	100°C	100°C	100°C	78°C
Solid Density	1.05-1.25g/cm <sup>3</sup>	1.05-1.13g/cm <sup>3</sup>	1.05-1.13g/cm <sup>3</sup>	1.05-1.25g/cm <sup>3</sup>	1.05-1.25g/cm <sup>3</sup>	1.05-1.25g/cm <sup>3</sup>	1.05-1.25g/cm <sup>3</sup>	1.05-1.25g/cm <sup>3</sup>	1.05-1.13g/cm <sup>3</sup>
Notched Impact Strength	44-49J/m <sup>2</sup>	60-80J/m <sup>2</sup>	44-49J/m <sup>2</sup>	41-48J/m <sup>2</sup>	41-48J/m <sup>2</sup>	41-49J/m <sup>2</sup>	41-48J/m <sup>2</sup>	44-49J/m <sup>2</sup>	44-49J/m <sup>2</sup>



## 21. Filaments Parameter Information

Material	Print Temp (°C)	Bed Temp (°C)	Difficulty	Flexibility	Shrinkage	Ductility	Applicable Models	
PLA Series	HP-PLA	190-220	50-60	●	●●	●	●●●	Suitable for 99% FDM models
	HP-PLAx3	190-220	50-60	●	●●	●	●●●	Suitable for 99% FDM models
	CR-PLA	190-220	50-60	●	●●	●	●●●	Suitable for 99% FDM models
	HC/EN-PLA	190-220	50-60	●	●●	●	●●	Suitable for 99% FDM models
ABS	220-260	90-110	●●●●	●●	●●●	●●●	Hot bed is needed, and Creality printer enclosure is recommended for DIY machine	
PETG	230-250	60-100	●●●	●●	●●	●●●	Hot bed is needed, and Creality printer enclosure is recommended for DIY machine	
TPU	210-240	50	●●	●●●●●	●	●●●●	Direct extrusion models	
Silk	190-220	50-60	●	●●	●	●●	Suitable for 99% FDM models	
Nylon	230-260	80-90	●●●●●	●●●	●●●●	●●●●	Hot bed is needed, and Creality printer enclosure is recommended for DIY machine	
Carbon (Ordinary type)	190-220	50-60	●	●	●	●●	Suitable for 99% FDM models	
PDS Advertising word filament-PLA	190-220	50-60	●	●●	●	●●	Creality K5, K8, T5	
Low temperature filament-PCL	60-100	-	●	●●●	●	●●●●	Low temperature 3D printing pen	

## 3D打印机耗材



HP-PLA

升级环保配方,哑光效果,韧性高,打印细腻,原料源自美国,有丰富的颜色可选。

CR-PLA CR-PETG  
CR-ABS CR-TPU

定位中高端用户,透明盘+黑白彩盒设计,线径公差小,打印性能稳定。可以满足您日常的设计和原型制作需求。具有出色的机械性能和打印质量。

HC-PLA HC-PETG  
HC-ABS HC-TPU

高性价比款,广泛适用市面上通用型FDM打印机,可以按照您的需求量身定制,可以满足您日常的设计和不同的原型制作需求。

EN-PLA EN-PETG  
EN-ABS EN-TPU

广泛适用市面上通用型FDM打印机,可以按照您的需求量身定制,可以满足您日常的设计和不同的原型制作需求,让想象插上翅膀。

## 光敏树脂

## 刚性树脂

低收缩率、打印速度较快,低味无毒,具备刚性和韧性。适合打印普通的产品原型及展示模型,高度兼容LCD型打印机。

## 低气味刚性树脂

低气味,高精度,细节纹理表现力佳。流动性好,打印成功率高。色系丰富,可满足客户对颜色的需求,适用于动漫手办,工艺摆设等。

## 类ABS树脂

具有高硬度,高韧性的物理性能,且抗冲击能力强,可以在模型成品上直接攻牙钻孔,主要应用于工业手板等领域。

## 可铸造牙冠树脂

具备低收缩率的特性,尺寸更加精准。成型后硬度高,遇到压力挤压不易变形。适用于制作烤瓷牙。

## 弹性树脂

弹性树脂是在高强度挤压和反复拉伸下表现出优秀弹性的材料,这种新材料可应用于减震、接触面,和其他工程应用。适合有趣创意的实现。

## 水洗树脂

模型可直接用水冲洗,安全环保干净,表面精度高,清洁的时间和材料成本低,是目前学校、教育机构及打印爱好者的喜欢的新材料之一。

## 牙模树脂

表面硬度极高,耐刮,具有低收缩特性,主要应用于医疗齿科的牙模种植修复以及隐形牙套打印制作等。

## 柔性树脂

柔性树脂是一种中等硬度、耐磨、可反复拉伸的材料。这种材料被用于摩擦装置需要反复拉伸的零部件中。

## 压模树脂

压模树脂主要应用于饰品的高温橡胶翻模,能承受200°C左右的温度不开裂,并能保持良好的强度,刚度和热稳定性。

## 可铸造首饰树脂

广泛应用于珠宝行业。燃烧性能优良,膨胀系数小,燃烧无残留。成型过程稳定不变形,成品表面光滑,精度高。

## 23.光敏树脂种类参数信息

相关参数	刚性树脂	类ABS树脂	可铸造牙冠树脂	弹性树脂	水洗树脂	牙模树脂	柔性树脂	压模树脂	可铸造首饰树脂
粘度	150-250MPa·s (NDJ-8S 旋转粘度仪(25°C))	200-350MPa·s (NDJ-8S 旋转粘度仪(25°C))	50-170MPa·s (NDJ-8S 旋转粘度仪(25°C))	300-1000MPa·s (NDJ-8S 旋转粘度仪(25°C))	100-350MPa·s (NDJ-8S 旋转粘度仪(25°C))	150-300MPa·s (NDJ-8S 旋转粘度仪(25°C))	150-300MPa·s (NDJ-8S 旋转粘度仪(25°C))	150-300MPa·s (NDJ-8S 旋转粘度仪(25°C))	100-150MPa·s (NDJ-8S 旋转粘度仪(25°C))
吸收波段	355nm-410nm	355nm-410nm	355nm-410nm	385nm-410nm	385nm-410nm	355nm-410nm	355nm-410nm	355nm-410nm	355nm-410nm
液体密度	1.05-1.25g/cm <sup>3</sup> (密度计(25°C))	1.05-1.13g/cm <sup>3</sup> (密度计(25°C))	1.05-1.25g/cm <sup>3</sup> (密度计(25°C))	1.05-1.25g/cm <sup>3</sup> (密度计(25°C))	1.05-1.25g/cm <sup>3</sup> (密度计(25°C))	1.05-1.25g/cm <sup>3</sup> (密度计(25°C))	1.05-1.25g/cm <sup>3</sup> (密度计(25°C))	1.05-1.25g/cm <sup>3</sup> (密度计(25°C))	1.05-1.13g/cm <sup>3</sup> (密度计(25°C))
弯曲模量	1.882-2.385Mpa	1.192-2.525Mpa	1.192-2.525Mpa	1.882-2.385Mpa	1.882-2.385Mpa	1.882-2.385Mpa	1.882-2.385Mpa	1.882-2.385Mpa	1.192-2.525Mpa
弯曲强度	59-70MPa	68-80MPa	49-58MPa	40-70MPa	40-70MPa	59-70MPa	40-70MPa	59-70MPa	49-58MPa
热变形温度	80°C	80°C	75°C	80°C	80°C	80°C	80°C	220°C	65°C
热膨胀系数	95*E-6	95*E-6	95*E-6	95*E-6	95*E-6	95*E-6	95*E-6	95*E-6	95*E-6
体积收缩率	3.72-4.24%	3.72-4.24%	1.88-2.45%	3.72-4.24%	3.72-4.24%	1.56-1.95%	3.72-4.24%	3.72-4.24%	4.06-5.08%
线收缩率	1.05-1.35%	1.05-1.35%	0.8-1%	1.05-1.35%	1.05-1.35%	0.85-1.05%	1.05-1.35%	1.05-1.35%	1.05-1.35%
拉伸强度	36-52MPa	42-62MPa	42-62Mpa	30-52MPa	30-52MPa	42-62MPa	30-52MPa	36-52MPa	42-62MPa
拉伸模量	1.779-2.385MPa	1.86-2.645MPa	1.86-2.645MPa	1.779-2.385MPa	1.779-2.385MPa	1.779-2.385MPa	1.779-2.385MPa	1.779-2.385MPa	1.86-2.645MPa
断裂拉伸应变	11%-20%	11%-21%	11%-20%	200%	120%	11%-20%	130%	11%-20%	11%-20%
邵氏硬度	84D	75-80D	80-88D	20-30D	80-85D	82D	65-75D	86D	65D
玻璃化温	100°C	100°C	78°C	100°C	100°C	100°C	100°C	100°C	78°C
固体密度	1.05-1.25g/cm <sup>3</sup>	1.05-1.13g/cm <sup>3</sup>	1.05-1.13g/cm <sup>3</sup>	1.05-1.25g/cm <sup>3</sup>	1.05-1.25g/cm <sup>3</sup>	1.05-1.25g/cm <sup>3</sup>	1.05-1.25g/cm <sup>3</sup>	1.05-1.25g/cm <sup>3</sup>	1.05-1.13g/cm <sup>3</sup>
缺口冲击强度	44-49J/m <sup>2</sup>	60-80J/m <sup>2</sup>	44-49J/m <sup>2</sup>	41-48J/m <sup>2</sup>	41-48J/m <sup>2</sup>	41-49J/m <sup>2</sup>	41-48J/m <sup>2</sup>	44-49J/m <sup>2</sup>	44-49J/m <sup>2</sup>

## 24. 线材种类参数信息

材质	打印温度 (°C)	热床温度 (°C)	打印难度	柔软度	收缩率	韧性	适用机型	
PLA 系列	HP-PLA	190-220	50-60	●	●●	●	●●●	适配99%FDM机型
	HP-PLAx3	190-220	50-60	●	●●	●	●●●	适配99%FDM机型
	CR-PLA	190-220	50-60	●	●●	●	●●●	适配99%FDM机型
	HC/EN-PLA	190-220	50-60	●	●●	●	●●	适配99%FDM机型
ABS	220-260	90-110	●●●●	●●	●●●	●●●	需要热床, DIY机推荐使用Crealty保温罩	
PETG	230-250	60-100	●●●	●●	●●	●●●	需要热床, DIY机推荐使用Crealty保温罩	
TPU	210-240	50	●●	●●●●●	●	●●●●	近端挤出机型	
Silk	190-220	50-60	●	●●	●	●●	适配99%FDM机型	
Nylon	230-260	80-90	●●●●●	●●●	●●●●	●●●●	需要热床, DIY机推荐使用Crealty保温罩	
Carbon (普通型)	190-220	50-60	●	●	●	●●	适配99%FDM机型	
广告字耗材-PLA	190-220	50-60	●	●●	●	●●	Crealty K5、K8、T5	
低温打印笔耗材-PCL	60-100	-	●	●●●	●	●●●●	低温打印笔	

## 25. After-Sales Service Card >>>

### Warranty Policy ←

- 1-year Limited Warranty since the date of product purchase.
- 6-months Limited Part Warranty for UV light.
- 3-months Limited Part Warranty for 2K Screen.
- No Warranty for the Release Film and Product Gift (U disk, Gloves, Screwdriver, Paper funnel, Brush, etc.)

### What Is Covered? ←

Any defects in material, workmanship of product will be covered until you provide any relating documents and information, including but not limited to:

- User of the product are in the country of purchase
- Defective product is a CREALITY product
- Proof of Purchase

### What Is Not Covered? ←

CREALITY does not guarantee the service as a result of:

1. The proof of purchase being altered or made illegible.
2. The product label or serial number on the product being altered or made illegible.
3. Normal wear of accessories or consumables for use as release film.
4. Malfunction or damage caused by personal retrofitting, or improper installation and usage.
5. Malfunction or damage caused by use in non-recommended working environments.
6. Malfunction or damage caused by overuse (overload) or wrong maintenance (damp, mildew, etc.)
7. Malfunction or damage caused by Force Majeure (fire hazard, earthquake, lightning and floods, etc.)
8. Malfunction or damage caused by the use of other brand parts or consumable.

### Technical Support ←

Please enjoy our technical support of the whole lifetime (Except technical problem beyond product itself) after purchase the product while product documents as user manual attached in U disk for instruction.

Please provide product Serial Number when apply for technical support.

### Kindly Notification ←

Please read the user manual and warranty card carefully before the use.

For any service, Please priority contact local seller or contact us via

Email: [cs@creality.com](mailto:cs@creality.com) for support.

## 售后服务卡

### 退/换货政策 ←

#### 一、满足退/换货时间

- ① 电商平台购买支持7天无理由退货，即产品签收时间起算，满168小时为7天。
- ② 因机器品质问题，非人为损坏的情况，签收后15天内可申请退换货。
- ③ 如另通过合同购买且有签订退换货时间的以合同为准，运费标准以售后服务卡为准。

二、产品外观要求无损伤、划痕、污迹、裂纹、变形等；随机配件、工具、赠品、包装等要求齐全完好。经我司售后检测判定，如退/换货收到的产品外观损坏，配件不全或因未按照原包装打包邮寄导致的问题，客户需承担相应的费用，具体损耗及费用需寄回后经专业售后人员进行检测核算。

三、非质量问题退/换货，如使用了耗材，客户需承担耗材的费用；由于包装纸盒或打包木架返厂后是无法二次使用的，因此客户需承担包装费；具体损耗及费用需寄回后经专业售后人员进行检测核算。

四、因不喜欢、不想要、拍错、使用不当、不满意产品等原因造成的退换货，退回运费需客户自行承担。

五、换货时，客户需先将机器寄回，公司收到机器后会及时安排发货。

### 退/换货运费标准 ←

类型	分类	寄回运费	出库运费
换货	非品质问题	客户承担	公司承担
	品质问题	公司承担	公司承担
退货	非品质问题	客户承担	/
	品质问题	公司承担	/

### 保修政策 ←

#### 一、质保期

- ① 整机保修一年。
- ② UV灯保修六个月，2K屏保修三个月。
- ③ 离型膜、赠品（U盘、螺丝刀、手套、油漆刷、纸漏斗、铲刀等）无保质期。收到产品后，请核对说明书部件清单，如赠品有缺少或品质问题，7天内可联系售后申请补发或更换。

二、质保期内保修：经我司售后检测判定为品质问题，公司提供免费维修服务；如果是人为导致的非品质问题，客户需承担相应更换的配件费用，无需承担维修费。

三、质保期外维修：由客户承担维修过程中产生的人工费、配件费、包装费、来回运费等所有费用。

### 返厂维修运费标准 ←

类型	返厂时间	返厂运费	出库运费
非品质问题	三个月以内	客户承担	公司承担
	三个月以上	客户承担	客户承担
品质问题	一个月以内	公司承担	公司承担
	一至三个月	客户承担	公司承担
	三个月以上	客户承担	客户承担

### 下列情况不列入质保范围 ←

- ① 无法提供有效的机器制造编码、购买凭证和保修卡，或信息被涂改、字迹模糊、无法辨认等。
- ② 正常的使用磨损而造成的部件损坏。
- ③ 未按说明书指导，不正确安装、使用及操作，或私自对机器进行改装而造成机器故障或损坏。
- ④ 在非机器规定的工作环境下使用而造成机器故障或损坏。
- ⑤ 由于滥用（超出工作负荷等）或维护不当（受潮、进液、浸泡、发霉等）造成机器故障或损坏。
- ⑥ 由于不可抗因素（如：火灾、地震、雷击、水灾等）造成机器故障或损坏。
- ⑦ 由于使用其他品牌部件或低质量耗材造成的设备故障或损坏。
- ⑧ 未经官方授权的服务点维修过的机器。

### 技术支持 ←

凡购买创想三维3D打印机，均可享受（除产品本身之外）终生技术支持，如超越产品本身的技术问题恕不提供。本产品在U盘卡中有相关使用资料，如在使用过程中遇到技术问题，请联系售后客服帮您解决。

### 温馨提示 ←

- ① 使用机器前请仔细阅读说明书和售后服务卡。
- ② 质保期内维修过的机器后仍享有剩余质保服务。
- ③ 退/换货及返厂维修需按原包装寄回机器，以免快递过程中产生其他问题，建议妥善保存好产品原包装。
- ④ 申请质保服务时，需提供产品制造编码、购买凭证、订单号、保修卡、发票等信息。如未提供，公司有权拒绝提供质保服务。
- ⑤ 服务时间：周一至周六，8:30~20:45（法定节假日除外）。热线：400-613-3882，邮箱：cs@creality.com。





# WARRANTY



Before returning the product and filling in a warranty, please contact after-sale person for going through after-sale formality. And attach this warranty card along with the returned machine.

Repair

Change

Return

Name: \_\_\_\_\_ Telephone: \_\_\_\_\_

Address: \_\_\_\_\_  
\_\_\_\_\_  
\_\_\_\_\_

Serial Number: \_\_\_\_\_ Order Number: \_\_\_\_\_

Channel: Platform  Offline

Date of purchase Day \_\_\_\_\_ Mon. \_\_\_\_\_ Year \_\_\_\_\_

Malfunction And Damage Depiction Or Return And Change Reasons\ Suggestions:

\_\_\_\_\_  
\_\_\_\_\_  
\_\_\_\_\_

Repair Records:

\_\_\_\_\_  
\_\_\_\_\_  
\_\_\_\_\_



Note: Client need filling in basic infor. and return reasons. Repair records shall retain for technicians.



# 产品保修卡



产品寄回前请先联系售后专员，为正常进行售后处理，请务必填写此卡，并随机器寄回。

返修

换货

退货

客户名称：\_\_\_\_\_联系电话：\_\_\_\_\_

收件地址：\_\_\_\_\_

\_\_\_\_\_

\_\_\_\_\_

机器制造编码：\_\_\_\_\_订单编号：\_\_\_\_\_

购买渠道：电商平台  线下

购买日期：\_\_\_\_\_年\_\_\_\_\_月\_\_\_\_\_日



温馨提示：基本信息及返厂原因为客户必填项，维修情况记录部分为维修人员填写项。

故障描述或退、换货原因和建议：

\_\_\_\_\_

\_\_\_\_\_

\_\_\_\_\_

维修情况记录：

\_\_\_\_\_

\_\_\_\_\_

\_\_\_\_\_



## FCC WARNING

This device complies with part 15 of the FCC Rules. Operation is subject to the following two conditions: (1) this device may not cause harmful interference, and (2) this device must accept any interference received, including interference that may cause undesired operation.

Any changes or modifications not expressly approved by the party responsible for compliance could void the user's authority to operate the equipment.

NOTE: This equipment has been tested and found to comply with the limits for a Class B digital device, pursuant to Part 15 of the FCC Rules. These limits are designed to provide reasonable protection against harmful interference in a residential installation. This equipment generates, uses and can radiate radio frequency energy and, if not installed and used in accordance with the instructions, may cause harmful interference to radio communications. However, there is no guarantee that interference will not occur in a particular installation. If this equipment does cause harmful interference to radio or television reception, which can be determined by turning the equipment off and on, the user is encouraged to try to correct the interference by one or more of the following measures:

- Reorient or relocate the receiving antenna.
- Increase the separation between the equipment and receiver.
- Connect the equipment into an outlet on a circuit different from that to which the receiver is connected.
- Consult the dealer or an experienced radio/TV technician for help.

To maintain compliance with FCC's RF Exposure guidelines, This equipment should be installed and operated with minimum distance between 20cm the radiator your body: Use only the supplied antenna.

Due to the differences between different machine models, the physical objects and the final images can differ. The final explanation rights shall be reserved by Shenzhen Creality 3D Technology Co., Ltd.

因每款机型不同,实物与图可能有所差异, 请以实物为准, 最终解释归深圳市创想三维科技有限公司所有。



Scan To Learn More  
更多服务请关注公众号

SHENZHEN CREALITY 3D TECHNOLOGY CO., LTD.

Add: 18F, JinXiuHongDu Building, Meilong Blvd., Longhua Dist.,  
Shenzhen, China 518131

Official Website: [www.creality.com](http://www.creality.com)

Tel: +86 755-8523 4565

E-mail: [info@creality.com](mailto:info@creality.com) [cs@creality.com](mailto:cs@creality.com)

**深圳市创想三维科技有限公司**

深圳市龙华区民治街道新牛社区梅龙大道锦绣鸿都大厦18F

公司网站: [www.cxsw3d.com](http://www.cxsw3d.com)

服务热线: 400 6133 882 0755-8523 4565



## FCC WARNING

This device complies with part 15 of the FCC Rules. Operation is subject to the following two conditions: (1) this device may not cause harmful interference, and (2) this device must accept any interference received, including interference that may cause undesired operation.

Any changes or modifications not expressly approved by the party responsible for compliance could void the user's authority to operate the equipment.

NOTE: This equipment has been tested and found to comply with the limits for a Class B digital device, pursuant to Part 15 of the FCC Rules. These limits are designed to provide reasonable protection against harmful interference in a residential installation. This equipment generates, uses and can radiate radio frequency energy and, if not installed and used in accordance with the instructions, may cause harmful interference to radio communications.

However, there is no guarantee that interference will not occur in a particular installation.

If this equipment does cause harmful interference to radio or television reception, which can be determined by turning the equipment off and on, the user is encouraged to try to correct the interference by one or more of the following measures:

- Reorient or relocate the receiving antenna.
- Increase the separation between the equipment and receiver.
- Connect the equipment into an outlet on a circuit different from that to which the receiver is connected.
- Consult the dealer or an experienced radio/TV technician for help.

To maintain compliance with FCC's RF Exposure guidelines, This equipment should be installed and operated with minimum distance between 20cm the radiator your body: Use only the supplied antenna.