

CREALITY

Create reality, achieve dreams

K1 Max

K1 Max



3D Printer User Manual

V1.1

Dear Users

Thank you for choosing our products. For the best experience, please read this User Manual carefully and strictly follow the instructions to operate the printer. Our teams will always be ready to provide you with the best services. Please contact us via the phone number or e-mail address provided at the end of this User Manual when you encounter any problem with the printer. For a better experience in using our products, you can also learn how to use the printer in the following ways: Accompanied instructions: you can find the relevant instructions and videos in the USB flash disk.

You can also visit our official website (<https://www.creality.com>) to find information regarding software, hardware, contact information, device instructions, device warranty information, and more.

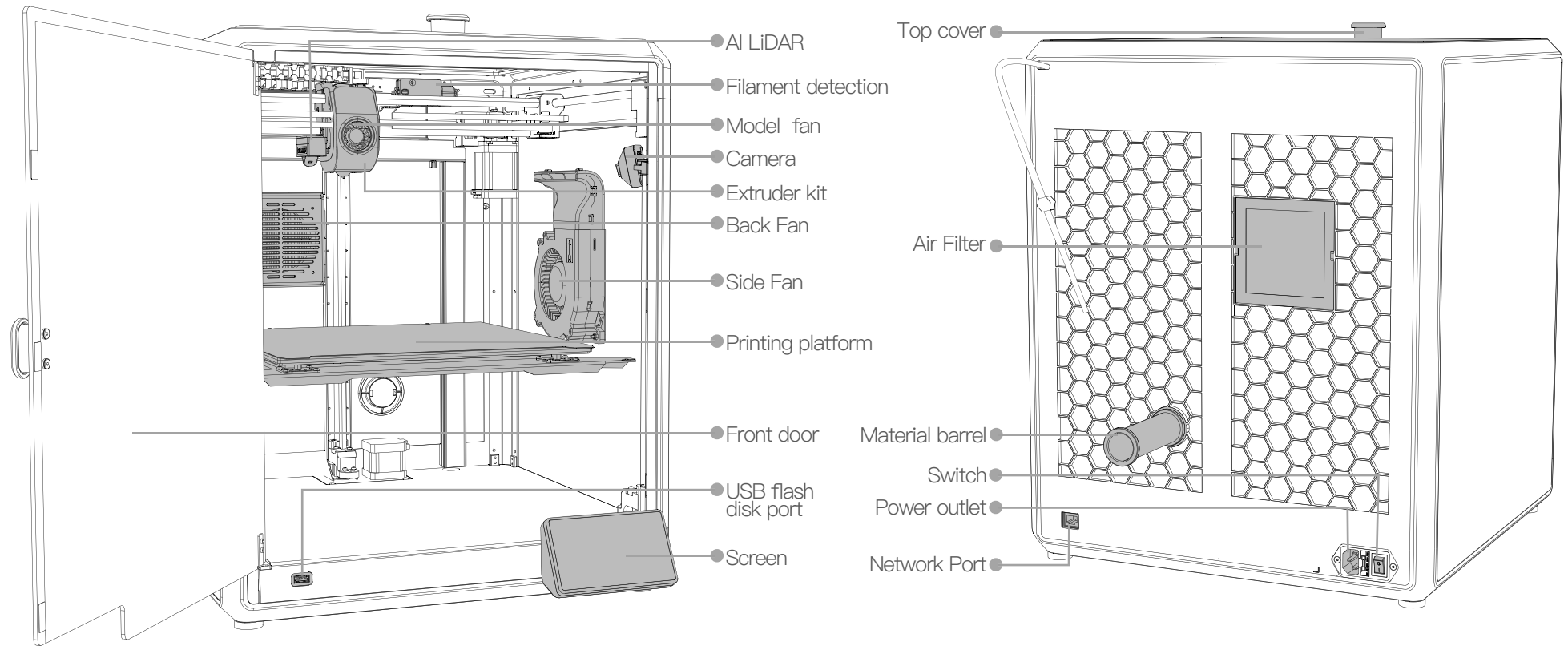
NOTES

- 1 Do not use the printer in any way other than described herein in order to avoid personal injury or property damage;
- 2 Do not place the printer near any heat source or flammable or explosive objects. We suggest placing it in a well-ventilated, cool and dustless environment;
- 3 Do not expose the printer to a violent vibration or any other unstable environment, as this may cause poor print quality;
- 4 Please use recommended filaments to avoid clogging of the extrusion head and causing damage to the machine;
- 5 Do not use the power cable of other products during installation. Always use a grounded three-prong power outlet, which accompanies the printer;
- 6 Do not touch the nozzle and the heated bed during operation to avoid burns or personal injury;
- 7 Do not wear gloves or wraps while operating the machine to prevent entrapment of movable parts that could cause crushing and cutting injuries to bodily parts;
- 8 Use the provided tools to clean the filament from the extruder in time taking advantage of the residual temperature after printing. Do not touch the extruder directly when cleaning, otherwise it may cause burns;
- 9 Clean the printer frequently. Clean the printer body with a dry cloth regularly after powering off the printer, wipe away dust, bonded print filament and foreign objects on the guide rails;
- 10 Children under 10 years old should not use the printer without supervision, otherwise it may cause personal injury;
- 11 Users should comply with the laws and regulations of the corresponding countries and regions where the equipment is located (used), abide by professional ethics, pay attention to safety obligations, and strictly prohibit the use of our products or equipment for any illegal purposes; Creality will not be responsible for any violators' legal liability under any circumstance;
- 12 Tip: Do not plug in or unplug wires on a charged basis.

1. About the Device	01-03
1.1 About the Printer	01-01
1.2 Device Specifications	02-02
1.3 Packing List.....	03-03
2. Unboxing	04-07
2.1 Unboxing Steps.....	04-04
2.2 Install the Product	05-06
2.3 Power-on guide	07-07
3. About the User Interface	08-10
3.1 Main、Prepare.....	08-08
3.2 Files	09-09
3.3 Tune、Support.....	10-10
4 First Printing	11-15
4.1 Local Printing	11-11
4.2 LAN Printing	12-13
4.3 CrealityCloud printing	14-15
5. Functional Specification	16-19
5.1 Extrude、Retract	16-16
5.2 Calibration	17-17
5.3 AI function.....	18-18
5.4 Self-inspection	18-18
5.5 Network Settings	19-19
6. Tips and Routine Maintenance	20-23
6.1 Precautions for printing	20-21
6.2 Maintenance Items	22-22
6.3 Installation of Damping Pads	23-23

1. About the Device

1.1 About the Printer



1. About the Device

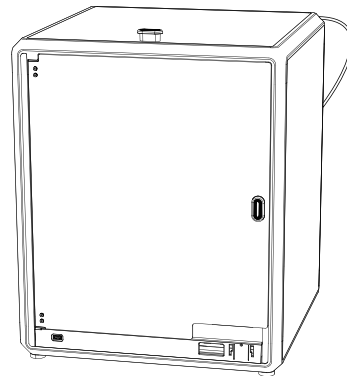


1.2 Device Specifications

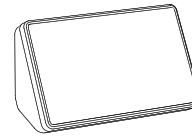
Basic Parameters	
Product Model	K1 Max
Dimensions	435*462*526mm
Max. Build Dimensions	300*300*300mm
Print Technology	FDM
Rated Voltage	100–240V~, 50/60Hz
Rated Power	1000W
Ambient temperature	10°C–30°C / 50°F–86°F
Extruder	Sprite Direct Drive
Supported Filament	PLA/ABS/Carbon/PETG/PET/TPU95A
Max. Heated Bed Temperature	120°C
Max. Nozzle Temperature	300°C
Screen	4.3 inch touch screen
Printing Method	USB Flash Disk/LAN Printing/Creality Cloud Printing
Connection	USB flash disk/WIFI/Ethernet
Power Loss Recovery	Yes
Filament Detection	Yes
Auto leveling	Yes
Camera	Yes
AI LiDAR	Yes

1. About the Device

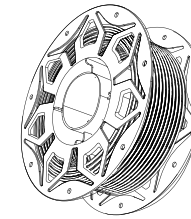
1.3 Packing List



1 Printer



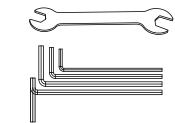
2 Screen



3 Filament



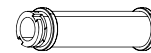
Tool Box List



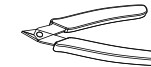
4 Wrench and Screwdriver x1



5 Blade x1



6 Material barrel x1



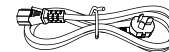
7 Cutting plier x1



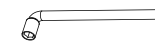
8 1.2mm nozzle cleaner x1



9 USB flash disk x1



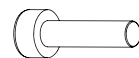
10 Power Cable x1



11 M6 socket spanner x1



12 Damping Pads x4



13 Belt tensioning screw M3x12 x2



14 Quick Guide x1



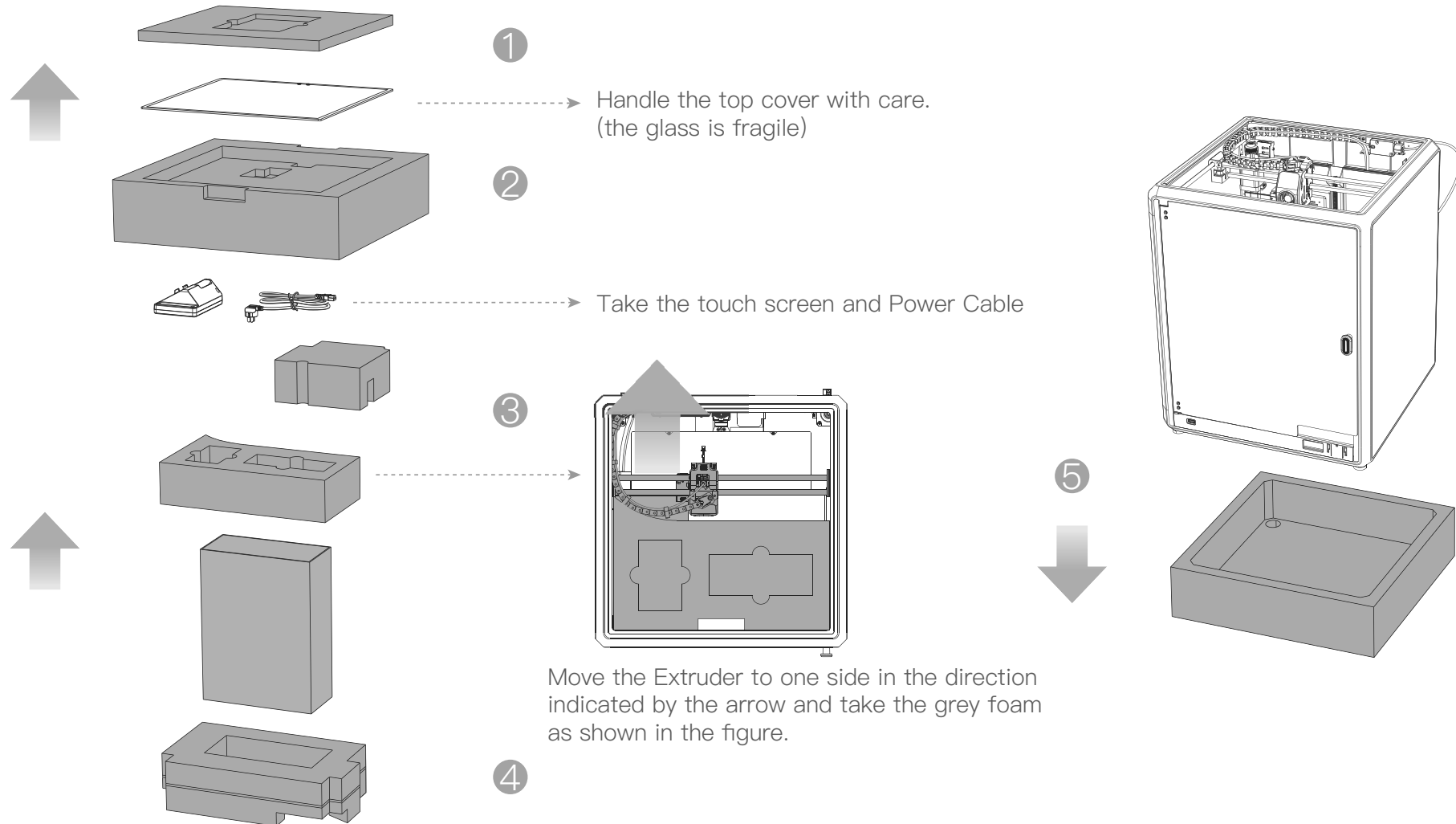
15 After-sales Services Card x1

* Tips: the above accessories are for reference only. Please refer to the physical accessories!

2. Unboxing

2.1 Unpacking Steps

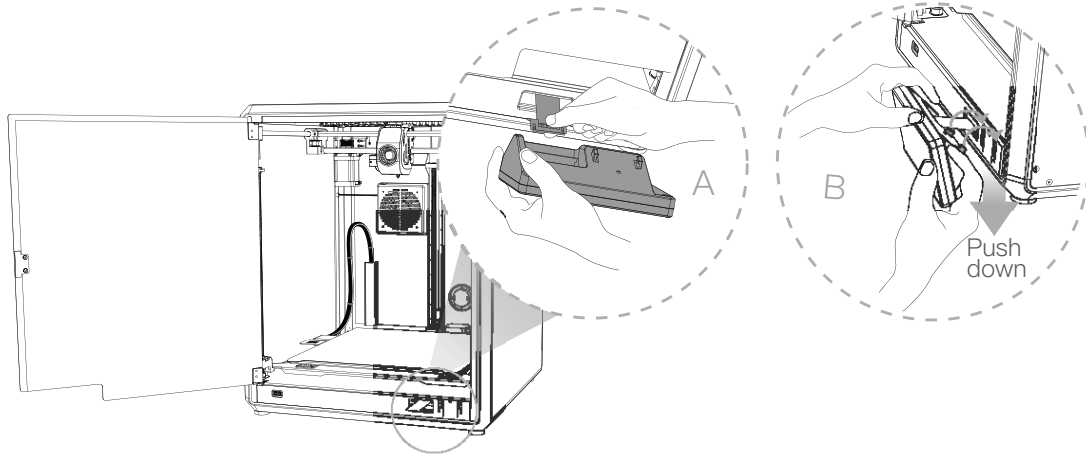
Take the packing cotton and tools in the order as shown in figure.



2. Unboxing

2.2 Install the Product

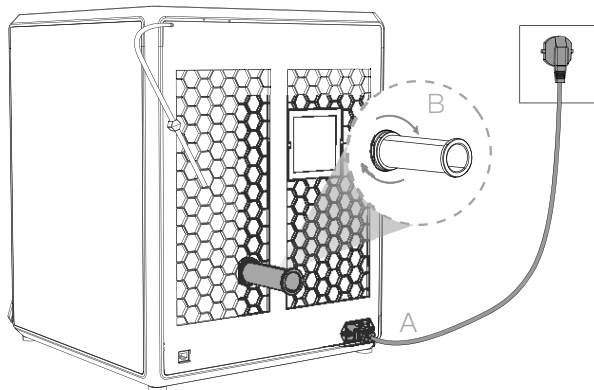
① connect the touch screen to the flat cable extended from the base according to Figure A. Then snap the touch screen into the slot in the baseplate, as shown in Figure B. (The direction is as shown in the figure; otherwise, the screen interface may be damaged.)



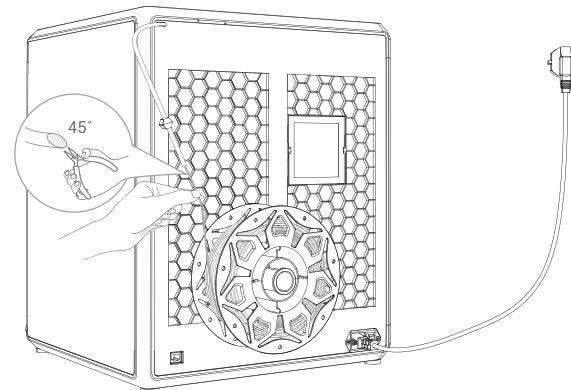
Caution:

- Do not power up the machine while you are connecting or disconnecting the touch screen.
- The flexible flat cable of the base is pulled lightly and broken carefully.

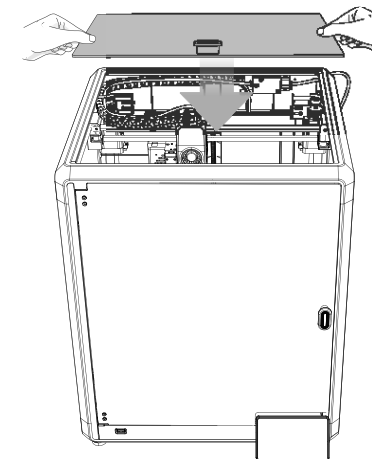
② A: Connection and power on.
B: Install the material barrel.



③ Load filaments. (Insert the filaments into the deepest part of Teflon tube until it cannot be moved.)



④ Install the top cover. (Put the top cover gently on the top of the machine.)



⚠ Caution:

1. When printing low-temperature filaments such as PLA and flexible filaments, remove the clear top cover if the room temperature exceeds 30°C.
2. When printing high melting-point filaments such as non-PLA and non-flexible filaments, be sure to keep the forming chamber temperature with the clear top cover closed to avoid cracking of the mould.