

3D Printer User Manual

3D打印机用户使用手册

V1.0

Dear Consumers,

Thank you for choosing our products. For the best experience, please read the instructions before operating the Printer. Our teams will always be ready to render you the best services. Please contact us via the phone number or e-mail address provided at the end when you encounter any problem with the Printer. For a better experience in using our product, you can also learn how to use the printer in the following ways:

View the accompanied instructions and videos in the U disk.

Visit our official website www.creality.com to find relevant software/hardware information, contact details and operation and maintenance instructions.

尊敬的用户：

感谢您选择创想三维的产品。为了您使用方便，请您在使用之前仔细阅读本说明书，并严格按照说明书的指示进行操作。

创想三维团队时刻准备为您提供优质的服务。在使用过程中无论遇到什么问题，请按照说明书结尾所提供的电话、邮箱与我们联系。

为了您能够更好地体验我们的产品，您还可以从以下方式获取设备操作知识：

随机使用说明：您可以在U盘内找到相关使用说明及视频。

您还可以登陆创想三维官网(www.cxsw3d.com)寻找相关软硬件、联系方式、设备操作、设备保养等信息。

Firmware Upgrade

Please login the official website <https://www.creality.com/download>, switch the language and select the relevant printer and model and download the required firmware, you can use it after the installation is finished.

固件升级

请您登录官网<https://www.cxsw3d.com>，点击首页→服务支持→下载资料，安装完成后即可使用。

NOTES 使用须知

- 1 Do not use the printer any way other than described in order to avoid personal injury or property damage.
- 2 Do not place the printer near any heat source or flammable or explosive objects. We suggest placing it in a well-ventilated, low-dust environment.
- 3 Do not expose the printer to violent vibration or any unstable environment, as this may cause poor print quality.
- 4 Please use recommended resin in case damage of machine.
- 5 Do not use any other power cable except the one supplied. Always use a grounded three-prong power outlet.
- 6 Please do not open the plastic cover during usage, otherwise the printing will be interrupted.
- 7 Do not wear cotton gloves when operating the printer. Such cloths may become tangled in the printers moving parts leading to burns, possible bodily injury, or printer damage.
- 8 Please wait a moment after the print is finished. And please wear gloves to take out the print by tools.
- 9 Clean the printer frequently. Always turn the power off when cleaning, and wipe with a dry cloth to remove dust, adhered printing plastics or any other material off the frame, guide rails, or wheels. Use glass cleaner or isopropyl alcohol to clean the print surface.
- 10 Children under 10 years should not use the printer without supervision.
- 11 Tips: Do not plug or unplug the power cord when power on.
- 12 Users should comply with the laws and regulations of the corresponding countries and regions where the equipment is located (used), abide by professional ethics, pay attention to safety obligations, and strictly prohibit the use of our products or equipment for any illegal purposes. Creality will not be responsible for any violators' legal liability under any circumstance.

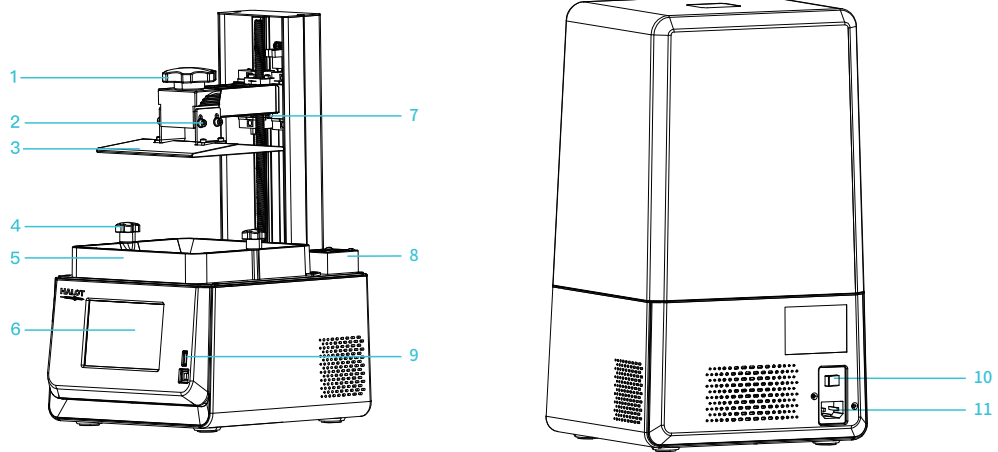
- 1 请勿尝试任何使用说明中没有描述的方法来使用本机, 避免造成意外的人身伤害和财产损失;
- 2 请勿将本机放置在易燃易爆物中或高热源附近, 请将本机放置在通风、阴凉、少尘的环境内;
- 3 请勿将打印机放置在振动较大或者其他不稳定的环境内, 机器晃动会影响打印机打印质量;
- 4 建议使用厂家推荐耗材, 以免造成机器损坏;
- 5 请勿在安装过程中使用其他产品电源线代替, 请使用本机附带的电源线, 电源插头需接插在带有地线的三孔插座;
- 6 请勿在操作打印机工作时打开打印机面盖, 以免影响打印;
- 7 请勿在操作打印机时戴棉手套, 以防可动部件对人身造成卷入挤压和切割伤害;
- 8 在打印完毕后稍等片刻, 戴上手套后再取下打印平台, 借助工具将平台上的模型取下, 清理时请勿直接用手触摸;
- 9 常做产品维护, 定期在断电的情况下, 用干布对打印机做机身清洁, 拭去灰尘和粘结的打印材料、导轨上的异物;
- 10 年龄在10岁以下的儿童, 请勿在没有人员监督的情况下使用本机, 以免造成人身伤害;
- 11 温馨提示: 请勿带电插拔电线;
- 12 使用者应遵守设备所在地(使用地)相应国家、地区法律法规, 恪守职业道德, 注意安全义务, 严禁将我司的产品或设备使用在任何非法用途上。如有违反者所应承担的相关法律责任我司概不负责。

Contents目录



Introduction 设备简介	01-01
Parameters 设备参数	02-02
Parts List 零部件清单	03-03
Assemble the 3D Printer 组装3D打印机	04-04
Use the 3D Printer 使用3D打印机	05-10
Start Printing 首次打印	11-14
Control remote printing 远程控制打印	15-16
Wiring Connection 电路接线	17-17
Troubleshooting 故障检修	18-19

1. Introduction 设备简介



1 Hexalobular socket screw
梅花胶头拧螺丝

2 Leveling screw
调平螺丝

3 Platform plate
平台板

4 Tray fixing screw
料盘固定螺丝

5 Resin vat
料盘

6 Touch screen
触摸屏

7 Limit sensor
限位感应片

8 Air filter
空气过滤器

9 USB port
USB接口

10 Power switch
电源开关

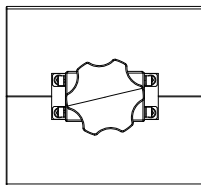
11 Power receptacle
电源母座

2. Equipment parameters 设备参数

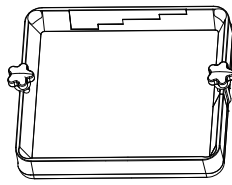
Basic Parameters 基本参数

Model Name 产品型号	HALOT-ONE PRO
Build Size 成型尺寸	130*122*160mm (length*width * height) 130*122*160mm (长*宽*高)
XY Axis Resolution XY轴分辨率	2560*2400
XY Axis Accuracy XY轴精度	0.051mm
Print Speed 打印速度	1-4S/ layer 1-4S/层
Layer Thickness 打印层厚	0.01-0.2mm
Touch Screen 触摸屏	5 inch touch screen 5英寸触摸屏
Light Source Type 光源配置	Integral Light Source(wavelength 405nm) 积分式光源 (波长405nm)
Rated Voltage 额定电压	100-240Va.c,50/60Hz
Rated Power 额定功率	100W
Machine Size 设备尺寸	236*245*416mm
Package Size 包装尺寸	310*300*530mm
Net Weight 净重	7.2KG
Gross Weight 毛重	9.0KG
Print Method 打印方式	USB Disk, Crealty Cloud U盘, 创想云
Machine Language 设备语言	中文/ English/ Español/ Deutsche/ Français/ Русский/ Português/ Italiano/ Türk/Nederlands/Polskie/日本語/한국어
Slicing Software Operation System 切片软件操作系统	Win7/Win8/Win 10 64bit, Mac system(32-bit is not supported) Windows7以上64位操作系统、Mac系统 (不支持32位)
Compatible Resin专用耗材	Common rigid photosensitive ,Standard resin ,High hardness ,High toughness ,Dental model resin 普通刚性树脂、标准树脂、弹性树脂、高硬度、高韧性树脂牙模树脂等

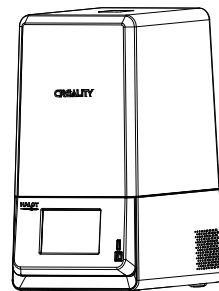
3. Package Content 零件清单



1 Print platform | 打印平台 x 1



2 Resin vat | 料盘 x 1



3 3D printer | 打印机 x 1



Tool list 工具包清单



1 U disk x 1
U盘



2 Screwdrivers x 1set
螺丝刀工具包



3 Brush x 1
油漆刷



4 Power adapter x 1
电源线



5 Paper funnel x 2
纸漏斗



6 Metal blade x 1
金属铲刀



7 Release film x 1
离型膜



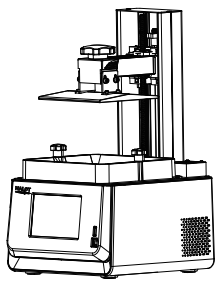
8 Plastic blade x 1
塑胶铲刀



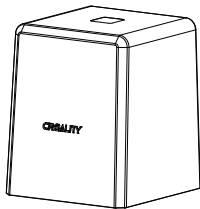
9 Calibration card x 1
校准卡片

Tips: the above accessories are for reference only, please refer to the physical accessories!
注意: 以上配件仅供参考, 请以实物为准!

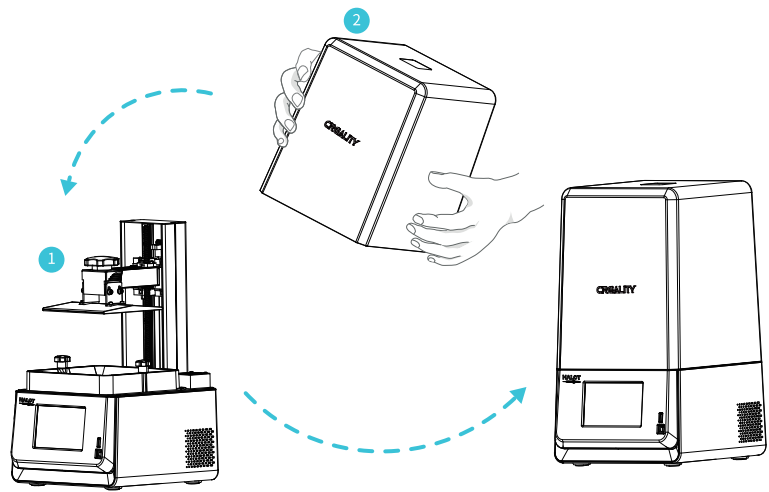
4. Assemble the 3D Printer 组装3D打印机



1 Machine body | 主机 x 1



2 Plastic cover | 上盖 x 1



Note: put the plastic cover on the machine body and the installation is completed.
注意: 上盖嵌入主机即安装完成

5. Interface Information 界面信息

Print



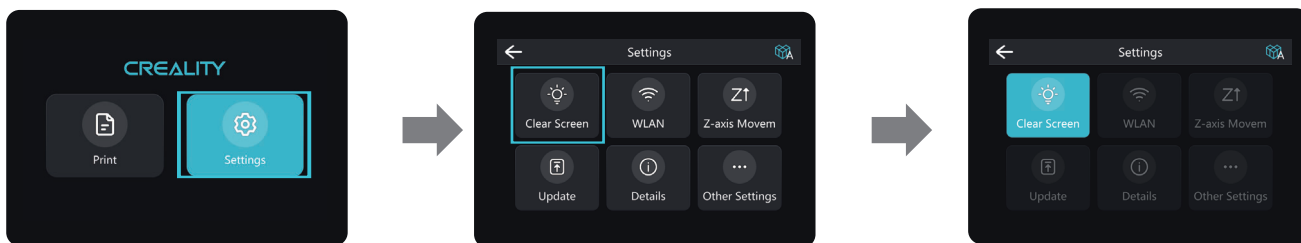
打印



Note: View and set printing parameters, the UI information is only for reference, the actual UI may be different.
 注意: 查看、设置打印参数, 界面仅供参考, 实际以UI为准。

6. Interface Information 界面信息

Settings

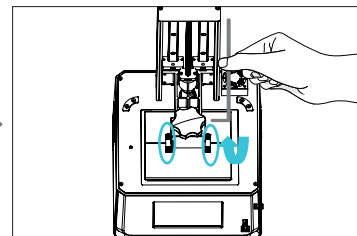
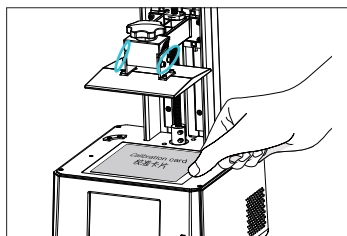
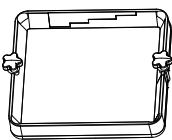
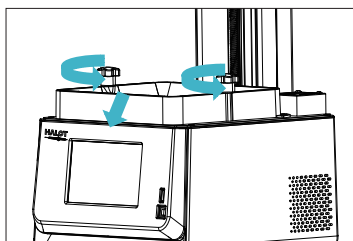


设置



Note: Check whether the light source is normal, the UI information is only for reference, the actual UI may be different.
注意：检查光源是否正常，界面仅供参考，实际以UI为准。

7. Level Platform 调平平台 1



1. First raise the platform, then loosen rubber screws on the left and right sides of the resin vat, and take out the resin vat.
进行打印平台的校准, 首先上升平台, 拧松料槽左右两侧胶头手拧螺丝, 将料槽取出。

2. Loose the four screws on the connecting plate on molding platform plate, attach calibration card on the printing screen, press Settings → Z axis movement → Leveling, operate following the Step 2 of levelling platform, to check whether the platform fits well with the paper.
松开成型平台板连接板的四颗螺丝, 将校准卡片贴紧打印屏, 按设置→Z轴移动→调平, 参照调平平台2步骤作业, 检查平台是否与纸张均匀贴合。

3. After confirming that the calibration card fit evenly, lock the four screws of the platform.
确认校准卡片均匀贴合后, 锁紧平台的四颗螺丝。



Note: The printint platform has been leveled at the factory. If it needs leveling due to transportation or other reasons, please follow the steps below to adjust the printing platform.

注意: 打印平台出厂时已调平, 若因运输或其他原因需要调平, 可以按照以下步骤进行打印平台调平。

8. Level Platform 调平平台 2

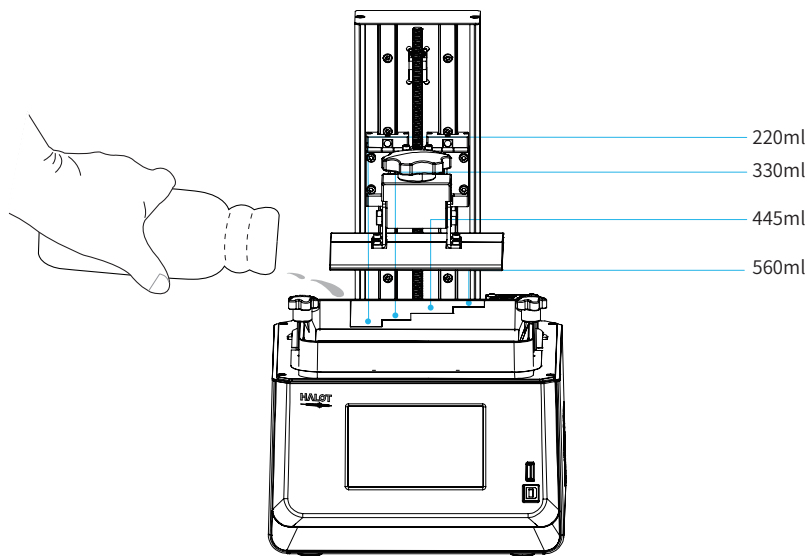


Note: The UI information is only for reference, the actual UI may be different.
注意：界面仅供参考，实际以UI为准。

9. Load Resin 装料

Pour the UV photosensitive resin into the resin vat. The slot capacity is 220ml/330ml/445ml/560ml.

将3D打印机UV光敏树脂倒入料盘，槽位容量分别：220ml/330ml/445ml/560ml。



Tips: How to change resin:

Take out the resin vat slowly, pour out the remaining resin into the container, clean the resin vat, pour in new resin, and then install the resin vat to the machine.

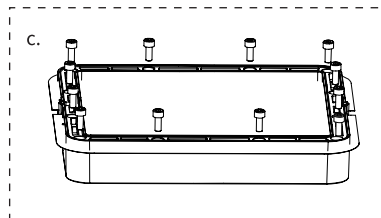
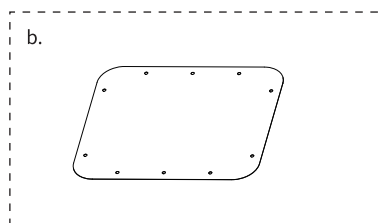
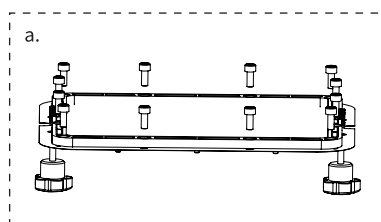
提示：如何更换耗材？

将料盘缓缓取出，把剩余树脂倒入容器，清洗干净料盘，重新倒入新树脂，再把料盘安装到机器即可。



Caution: Resin may cause skin irritation or an allergic skin reaction. please wear gloves before use to avoid direct contact with the skin.
警示：请戴上手套方可进行装料，光敏树脂为刺激性材料，避免接触到皮肤。

10. Release Membrane Replacement 离型膜拆换



a. First, remove the 12 screws at the bottom of the tray and take out the broken release film.

首先拆卸料槽底部的12颗螺丝,取出坏的离型膜

b. Then place the release film between the two steel frames.

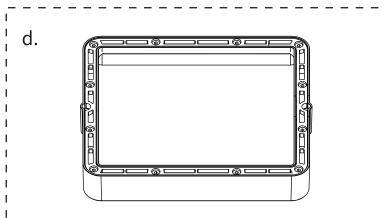
然后将离型膜放置在两个钢圈之间

c. Finally, put the assembled steel frame back into the tray and tighten 12 screws.

最后将安装完的钢圈放回料槽,锁上12颗螺丝

d. The installed release film is as show.

安装好的离型膜如下图



Parameters
规格参数



(Size)尺寸:200.4*176.4mm



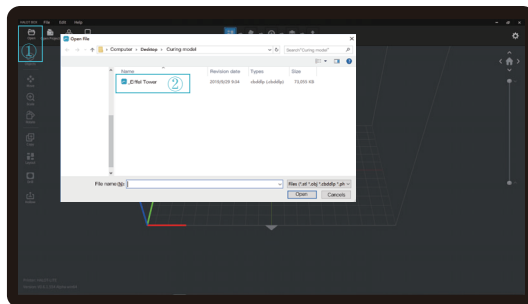
(Thickness)厚度:0.15-0.2mm



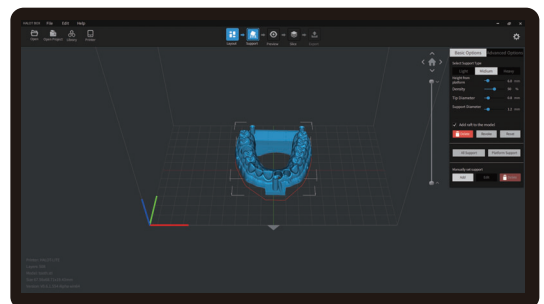
透光率:95%
(Light Transmittance)

11. Start Printing 首次打印

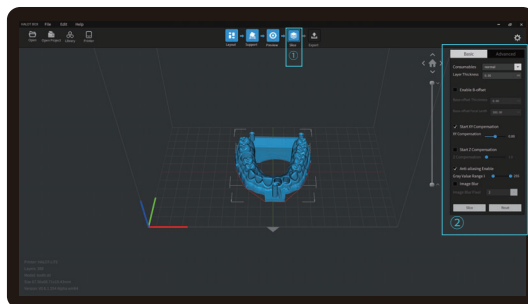
1. Slicer



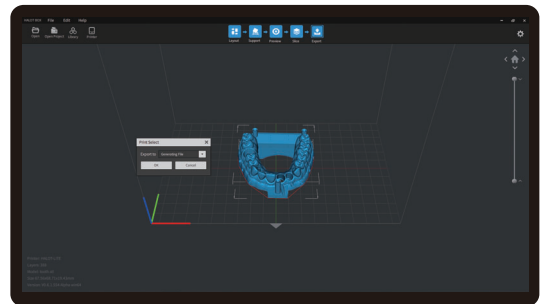
1. Open the slicer software of LCD 3D printer, click “open” on the left of the screen and add model file.



2. If the model needs to add support, click the upper left icon to set corresponding parameters.



3. Click icon ①→Setting slice printing parameters②→Click “Slice”



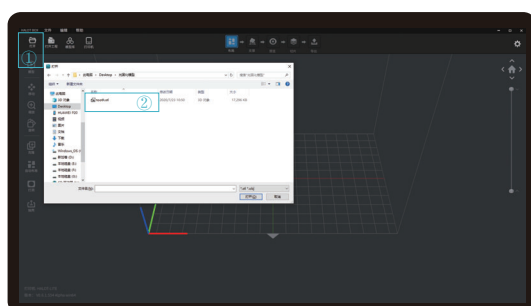
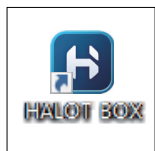
4. waiting for slice to be finished→save the sliced file
(You are welcome to find more details of slicing tutorial on the official website www.creality.com).



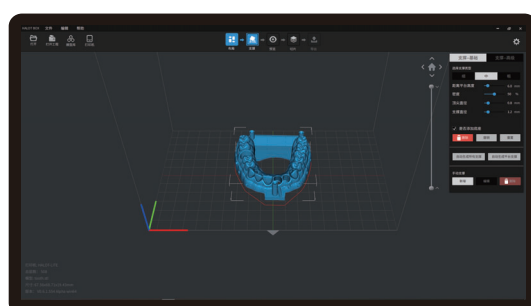
Note: The UI information is only for reference , the actual UI may be different.
注意：界面仅供参考，实际以UI为准。

12. Start Printing 首次打印

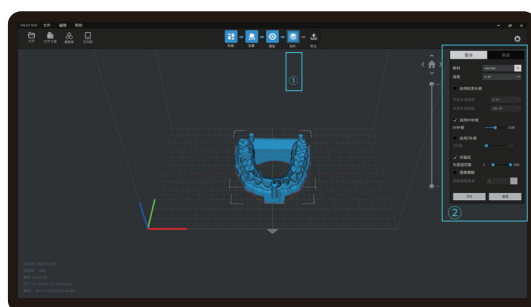
1. 切片



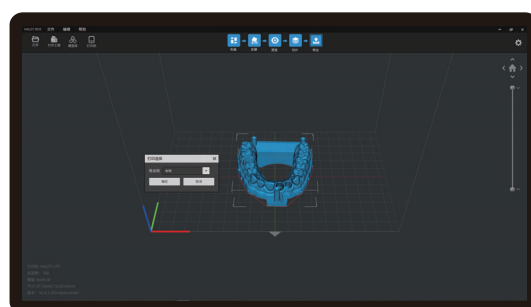
1. 打开LCD光固化3d打印切片软件,界面左方点击“打开”添加模型文件;



2. 根据模型如需添加支架,点击左上方图标,设置相应参数;



3. 点击图标①→设置切片打印参数②→点击切片;



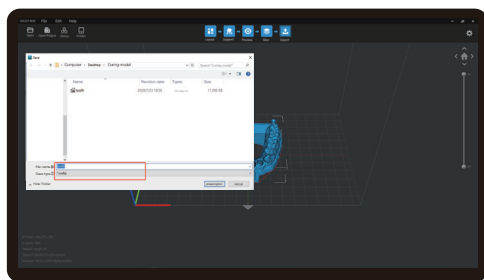
4. 等待完成切片后→另存切片好的文件。
(*切片教程详见官网切片视频www.cxsw3d.com)



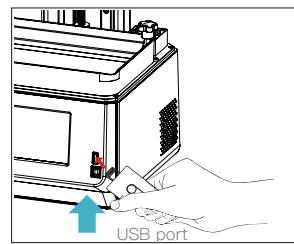
Note: The UI information is only for reference, the actual UI may be different.
注意:界面仅供参考,实际以UI为准。

13. Start Printing 首次打印

2. Print

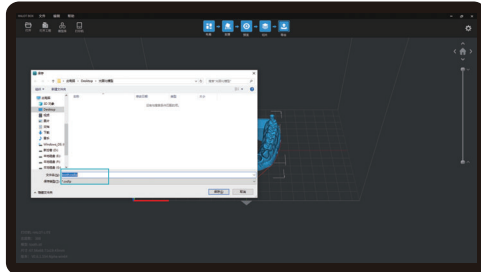


1. Generate cxdlp file, and save the file to U disk;

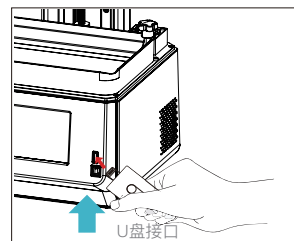


2. Insert the U disk → press the print button.

2. 打印



1. 生成 cxdlp 文件 → 保存文件到 U 盘；



2. 插入 U 盘 → 按下打印按键



Note: The UI information is only for reference, the actual UI may be different.

注意：界面仅供参考，实际以 UI 为准。



Warning: Do not shake the machine while printing to avoid influencing printing quality.

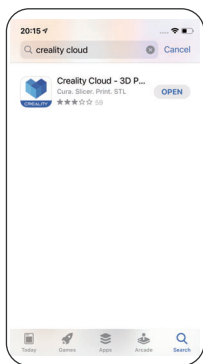
警告：在打印过程中，机器不能摇动，以免影响打印质量。

14. Start Printing 首次打印

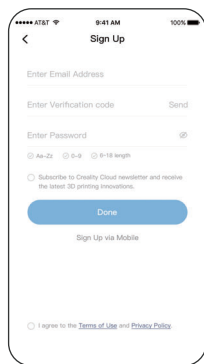


Note: The UI information is only for reference, the actual UI may be different, The machine stores the file being printed by default.
注意: 界面仅供参考, 实际以UI为准, 机器默认存储当前打印文件。

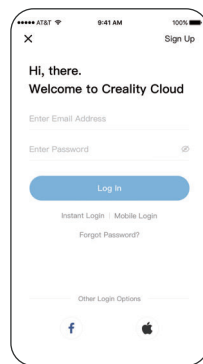
15. Control remote printing 远程控制打印



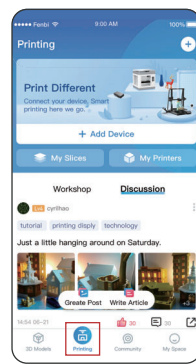
1. Download



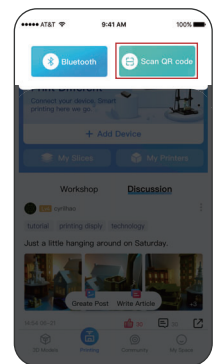
2. Register



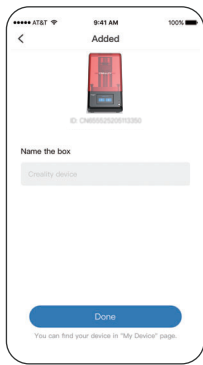
3. Log in



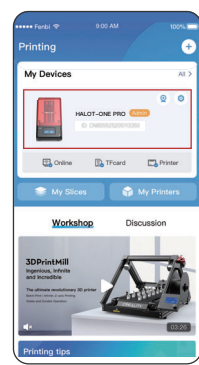
4. Add equipment



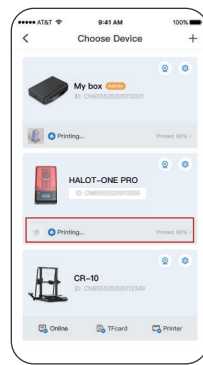
5. Scan QR Code



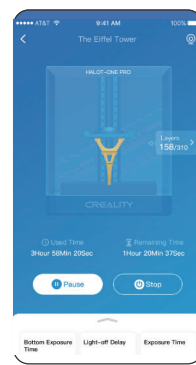
6. Device naming



7. Select device



8. check printing status



9. Print Progress

Note: The UI information is only for reference, the actual UI may be different.
注意: 界面仅供参考, 实际以 UI 为准。

16. Control remote printing 远程控制打印



1. 下载



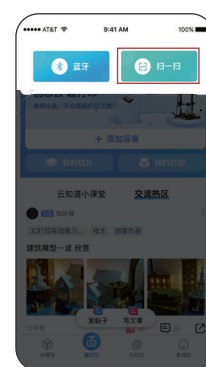
2. 注册



3. 登录



4. 新增设备



5. 扫一扫
(设置→详细信息→绑定创想云→二维码)



6. 设备命名



7. 选择设备



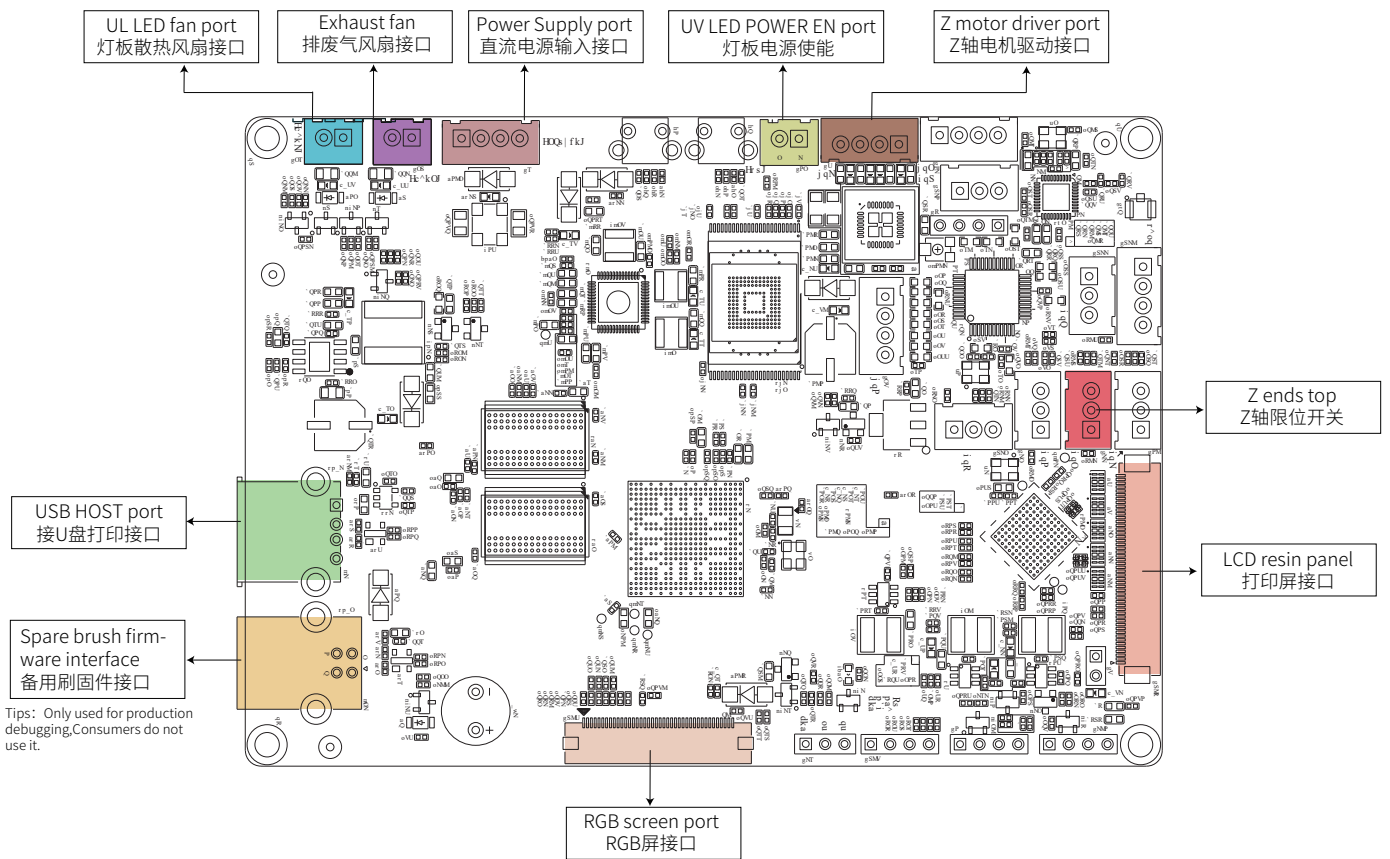
8. 查看打印状态



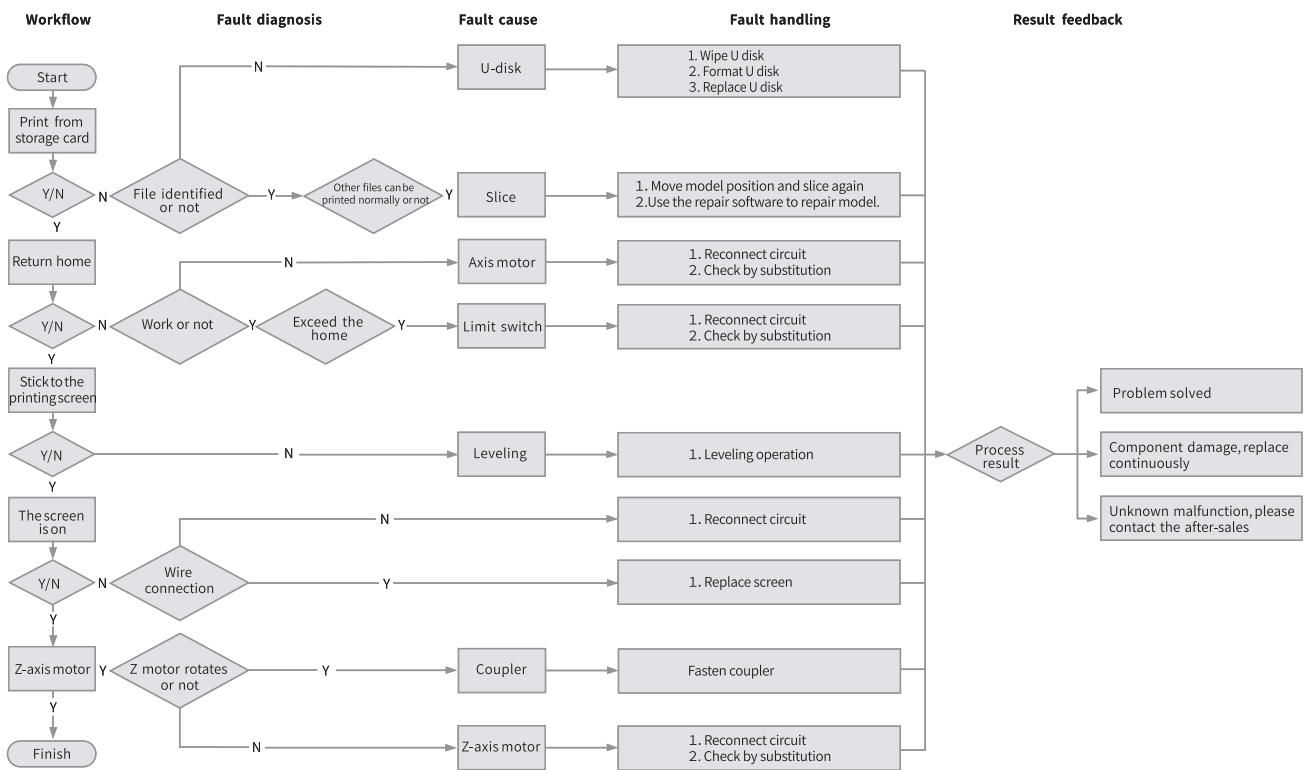
9. 打印进度

Note: The UI information is only for reference, the actual UI may be different.
注意: 界面仅供参考, 实际以 UI 为准。

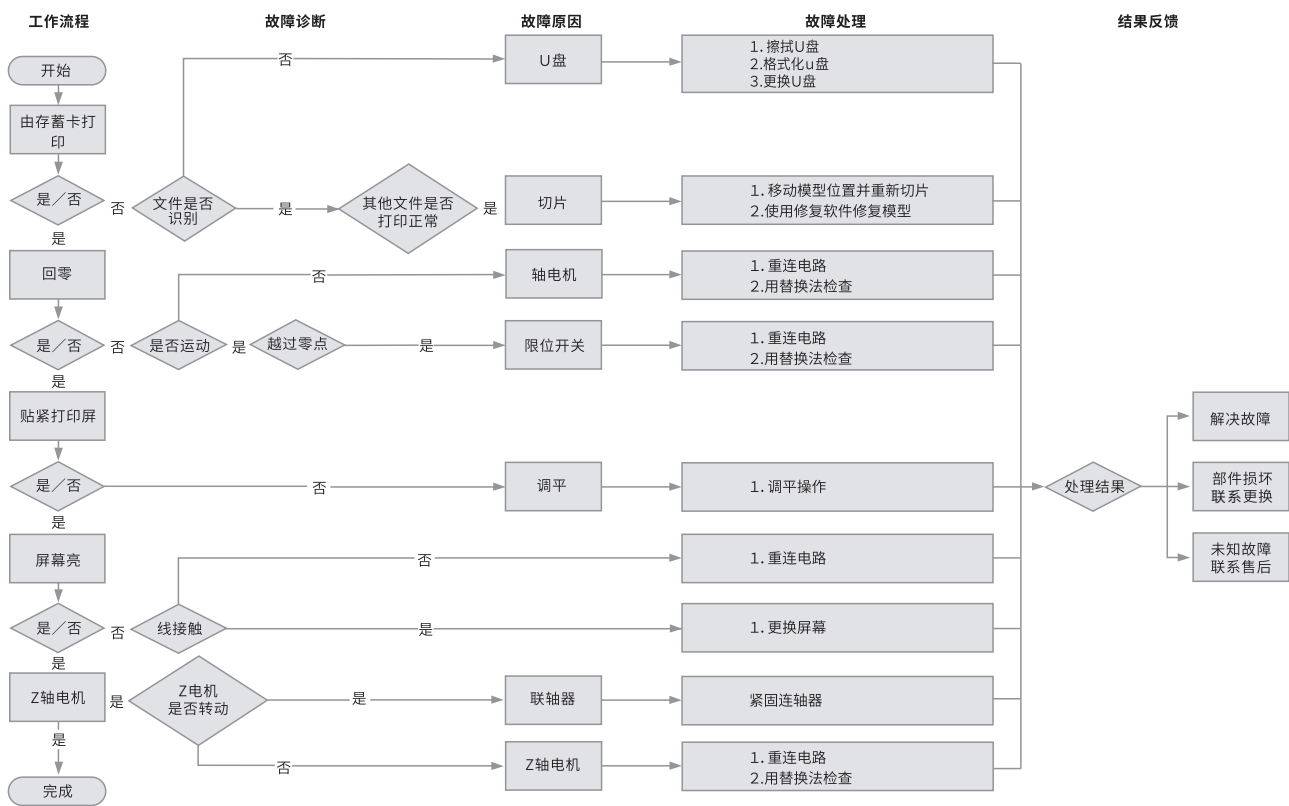
17. Wiring Connection 电路接线



18.Troubleshooting



19. 故障检修



FCC Statement



FCC Caution:

Any Changes or modifications not expressly approved by the party responsible for compliance could void the user's authority to operate the equipment.

This device complies with part 15 of the FCC Rules. Operation is subject to the following two conditions: (1) This device may not cause harmful interference, and (2) this device must accept any interference received, including interference that may cause undesired operation.

IMPORTANT NOTE:

Note: This equipment has been tested and found to comply with the limits for a Class B digital device, pursuant to part 15 of the FCC Rules. These limits are designed to provide reasonable protection against harmful interference in a residential installation. This equipment generates, uses and can radiate radio frequency energy and, if not installed and used in accordance with the instructions, may cause harmful interference to radio communications. However, there is no guarantee that interference will not occur in a particular installation. If this equipment does cause harmful interference to radio or television reception, which can be determined by turning the equipment off and on, the user is encouraged to try to correct the interference by one or more of the following measures:

- Reorient or relocate the receiving antenna.
- Increase the separation between the equipment and receiver.
- Connect the equipment into an outlet on a circuit different from that to which the receiver is connected.
- Consult the dealer or an experienced radio/TV technician for help.

FCC Radiation Exposure Statement:

This equipment complies with FCC radiation exposure limits set forth for an uncontrolled environment.

This equipment should be installed and operated with minimum distance 20cm between the radiator& your body.

IC Caution:

This device complies with Industry Canada's licence-exempt RSSs. Operation is subject to the following two conditions:

- (1) This device may not cause interference; and
- (2) This device must accept any interference, including interference that may cause undesired operation of the device.

To maintain compliance with RF exposure guidelines, this equipment should be installed and operated with a minimum distance of 20cm between the radiator and your body.

Le présent appareil est conforme aux CNR d'Industrie Canada applicables aux appareils radio exempts de licence. L'exploitation est autorisée aux deux conditions suivantes:

- (1) l'appareil ne doit pas produire de brouillage, et
- (2) l'utilisateur de l'appareil doit accepter tout brouillage radioélectrique subi, même si le brouillage est susceptible d'en compromettre le fonctionnement.

Pour maintenir la conformité aux directives d'exposition aux radiofréquences, cet équipement doit être installé et utilisé avec une distance minimale de 20 cm entre le radiateur et votre corps.

Due to the differences between different machine models, the physical objects and the final images can differ. The final explanation rights shall be reserved by Shenzhen Creality 3D Technology Co., Ltd.

因每款机型不同,实物与图可能有所差异, 请以实物为准, 最终解释权归深圳市创想三维科技股份有限公司所有。



SHENZHEN CREALITY 3D TECHNOLOGY CO., LTD.

Add: 18F, JinXiuHongDu Building, Meilong Blvd., Longhua Dist.,
Shenzhen, China 518131

Official Website: www.creality.com

Tel: +86 755-8523 4565

E-mail: info@creality.com cs@creality.com

深圳市创想三维科技股份有限公司

深圳市龙华区民治街道新牛社区梅龙大道锦绣鸿都大厦18F

公司网站: www.cxsw3d.com

服务热线: 400 6133 882 0755-8523 4565

Scan To Learn More
扫码了解更多

