

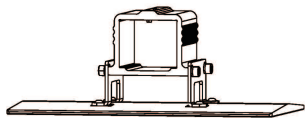
2. Equipment parameters



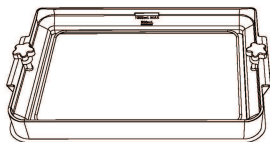
Basic Parameters

Model Name	HALOT-MAGE PRO
Build Size	228*128*230mm (length*width * height)
Screen resolution	7680*4320
Pixel size	0.0297mm
Print Speed	70mm/h (0.05mm layer thickness)
Layer Thickness	0.05-0.15mm
Print screen	10.3" print screen
Light Source Type	3rd generation LCD integral light source
Rated Voltage	100-240V~, 50/60Hz
Rated Power	150W
Operating temperature	15-35°C
Machine Size	333*270*608mm
Package Size	420*350*675mm
Net Weight	13.1kg
Gross Weight	15.8kg
Print Method	USB Disk, Creality Cloud App, Creality Cloud Online, WiFi Print
Machine Language	中文(简/繁)/ English/ Español/ Deutsche/ Français/ Русский/ Português/ Italiano/ Türk/Nederlands/Poliskie/日本語/한국어
Slicing Software Operation System	Window 7 and above 64-bit operating systems and Mac systems
Compatible Resin	Resins with wavelength of 405nm, such as high-speed resins, normal rigid resins, standard resins, elastic resins, high hardness, high-toughness resins, dental cast resins.

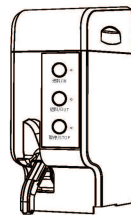
3. Packing list



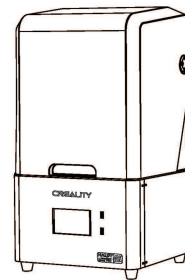
1 Print platform ×1



2 Resin vat ×1



3 Feeding module ×1



4 3D printer ×1



Tool list



1 U disk ×1



2 Screwdrivers ×1set



3 Power cable ×1



4 Paper funnel



5 Plastic blade ×1



6 Metal blade ×1



7 Release film ×1



8 Calibration card ×1



9 Vent-pipe ×1



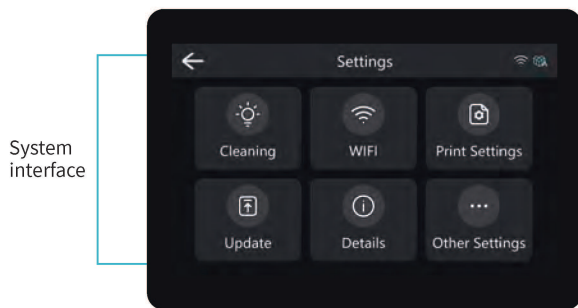
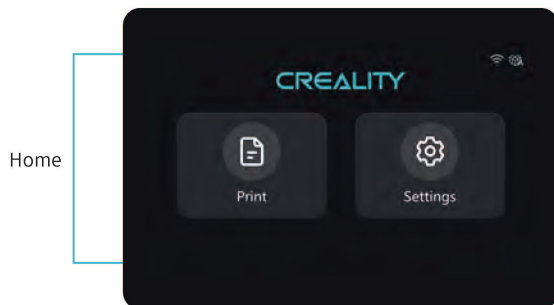
10 Wire hole cover ×1



11 Grease ×1

Tips: the above accessories are for reference only please refer to the physical accessories !

4. Information about the interface



Cleaning: click to clean the chute;

WLAN: click to set WALN;

Print Settings: click to set the print parameters, Z-axis movement, machine control, print mode, purge system, feed system and so on;

Update: click to upgrade the firmware version (local & online upgrade);

Details: click to bundle with Creality Cloud and view information about the device;

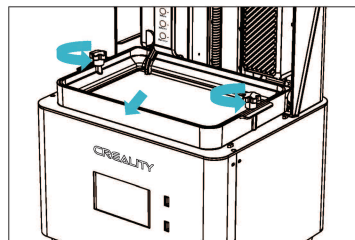
Other Settings: click to set language and locale settings, custom skins, restore factory settings, device maintenance settings and other functional settings.



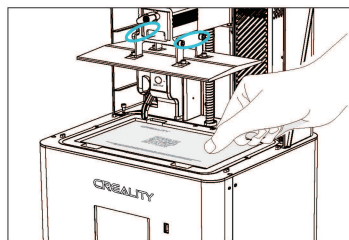
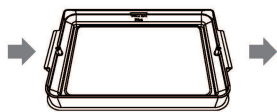
The current interface is for reference only. Due to the continuous upgrading of functions, it shall be subject to the latest software/firmware UI published on the official website.



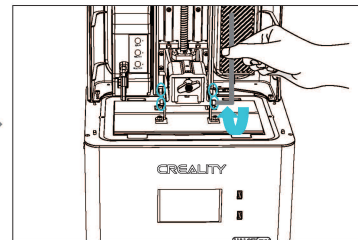
Note: Check that the light source is working properly.
The current interface is for reference only. Due to the continuous upgrading of functions, it shall be subject to the latest software/firmware UI published on the official website.



1. Raise the platform, loosen rubber screws on the left and right sides of the resin vat, and take out the resin vat.



2. Loosen the four screws on the connecting plate on molding platform plate, attach calibration card on the printing screen, press Settings → Print Settings → Z axis movement → Leveling. Check whether the platform fits evenly with the paper by referring to the steps on Page 7.



3. After confirming that the calibration card fits evenly, lock the four screws of the platform.



Note: The platform has been leveled at the factory. If it needs leveling due to transportation or other reasons, please follow the steps below to adjust the printing platform.