



3D Printer User Manual

V1.0

Dear Consumers,

Thank you for choosing our products. For the best experience, please read the instructions before operating the Printer. Our teams are always ready to render you the best services. Please contact us via the phone number or e-mail address provided at the end when you encounter any problem with the Printer.

For a better experience in using our product, you can also access how to use the printer in the following ways:

View the accompanied instructions and videos in the U disk.

Visit our official website www.creality.com to find relevant software/hardware information, contact details and operation and maintenance instructions.

Firmware/Software Downloads and Upgrades

The Printer already supports the following slicing software, and further functions are on the development roadmap.

 Download the firmware and HALOT BOX slicing software at: <https://www.creality.com>

 Download the CHITUBOX slicing software at: <https://www.chitubox.com>

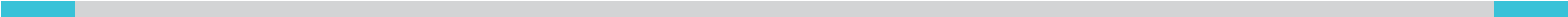
NOTES

- 1 Do not use the printer any way other than described to avoid personal injury or property damage.
- 2 Do not place the printer near any heat source or flammable or explosive objects. We suggest placing it in a well-ventilated, low-dust environment.
- 3 Do not expose the printer to violent vibration or any unstable environment, as this may cause poor print quality.
- 4 Please use recommended resin in case damage to machine.
- 5 Do not use any other power cable except the one supplied. Always use a grounded three-prong power outlet.
- 6 Please do not open the plastic cover during usage, otherwise the printing will be interrupted.
- 7 Do not wear cotton gloves when operating the printer. Such cloths may become tangled in the printers moving parts leading to burns, possible bodily injury, or printer damage.
- 8 Please wait after the print is finished. please wear gloves to take out the print tools.
- 9 Clean the printer frequently. Always turn the power off when cleaning, and wipe with a dry cloth to remove dust, adhered printing plastics or any other material off the frame, guide rails, or wheels. Use glass cleaner or isopropyl alcohol to clean the print surface.
- 10 Children under 10 years should not use the printer without supervision.
- 11 Tips Do not plug or unplug the power cord when power on.
- 12 Users should comply with the laws and regulations of the corresponding countries and regions where the equipment is located (used), abide by professional ethics, pay attention to safety obligations, and strictly prohibit the use of our products or equipment for any illegal purposes. Creality will not be responsible for any violators' legal liability under any.

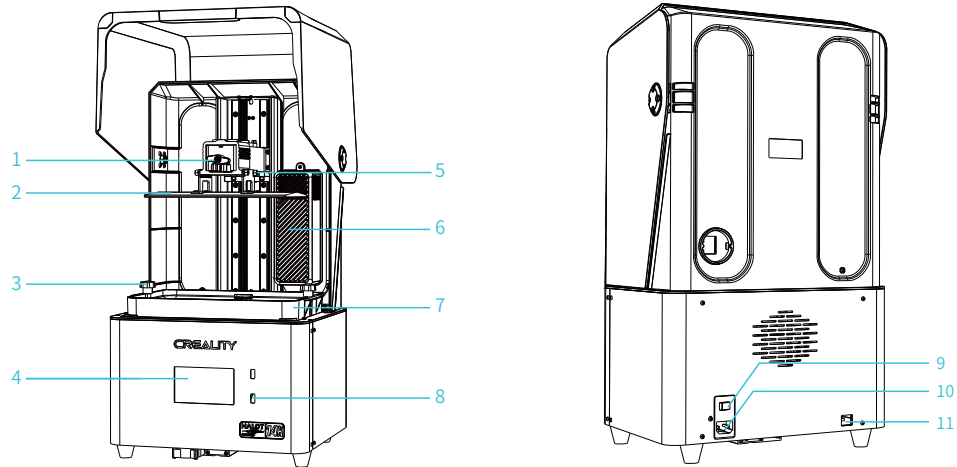
Contents



| | |
|--|-------|
| Product appearance | 01-01 |
| Equipment Parameters | 02-02 |
| Packing list | 03-03 |
| Operating guidance | 04-21 |
| Troubleshooting | 22-22 |
| Circuit board wiring diagram | 23-24 |



1. Product appearance



1 Thumb screw

2 Forming platform

3 Hexalobular socket screw

4 Touch screen

5 Leveling screw

6 Air filter

7 Resin vat

8 USB port

9 Power switch

10 Power port

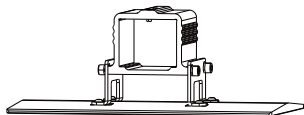
11 RJ45 interface

2. Equipment parameters

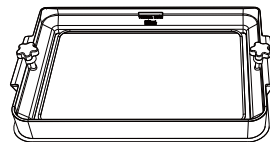


| Basic Parameters | |
|-----------------------------------|---|
| Model Name | HALOT-MAGE S |
| Build Size | 223*126*230mm (length*width * height) |
| Screen resolution | 13320*5120 |
| Pixel size | 16.8*24.8μm |
| Print Speed | 45mm/h (0.05mm layer thickness) |
| Layer Thickness | 0.05-0.2mm |
| Print screen | 10.1" print screen |
| Light Source Type | 3rd generation LCD integral light source |
| Rated Voltage | 100-240V~, 50/60Hz |
| Rated Power | 100W |
| Print Method | USB Disk, Crealty Cloud App, Crealty Cloud Online, WiFi Print |
| Machine Language | 中文(简/繁)/ English/ Español/ Deutsche/ Français/ Русский/ Português/ Italiano/ Türk/Nederlands/Polkskie/日本語/한국어 |
| Slicing Software Operation System | Window 7 and above 64-bit operating systems and Mac systems |
| Compatible Resin | Resins with wavelength of 405nm, such as high-speed resins, normal rigid resins, standard resins, elastic resins, high hardness, high-toughness resins, dental cast resins. |

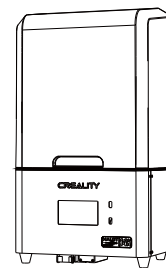
3. Packing list



1 Print platform ×1



2 Resin vat ×1



3 3D printer ×1



Tool list



1 U disk ×1



2 Screwdrivers ×1set



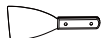
3 Power cable ×1



4 Paper funnel



5 Plastic blade ×1



6 Metal blade ×1



7 Release film ×1



8 Calibration card ×1



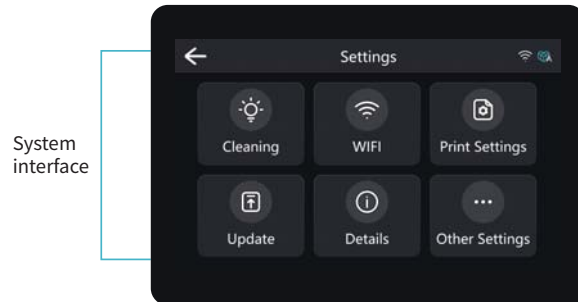
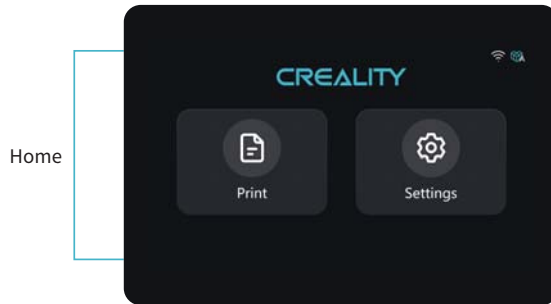
9 Vent-pipe ×1



10 Grease ×1

Tips: the above accessories are for reference only please refer to the physical accessories!

4. Information about the interface



Cleaning: click to clean the chute;

WLAN: click to set WALN;

Print Settings: click to set the print parameters, Z-axis movement, machine control, print mode, purge system, feed system and so on;

Update: click to upgrade the firmware version (local & online upgrade);

Details: click to bundle with Crealty Cloud and view information about the device;

Other Settings: click to set language and locale settings, custom skins, restore factory settings, time-lapse photography settings, device maintenance settings and other functional settings.



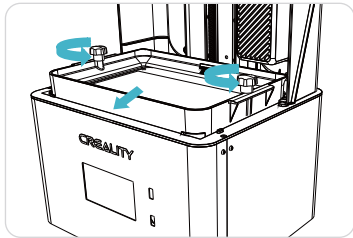
The current interface is for reference only. Due to the continuous upgrading of functions, it shall be subject to the latest software/firmware UI published on the official website.

5. Device Check

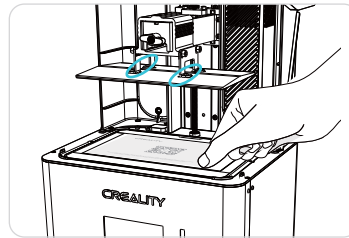


Note: Check that the light source is working properly.
The current interface is for reference only. Due to the continuous upgrading of functions, it shall be subject to the latest software/firmware UI published on the official website.

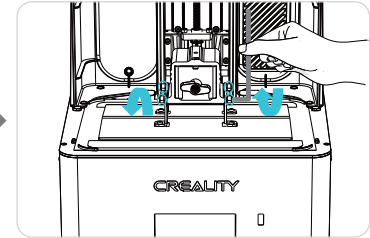
6. Leveling Guide



1. Raise the platform, loosen rubber screws on the left and right sides of the resin vat, and take out the resin vat.



2. Loosen the four screws on the connecting plate on molding platform, attach calibration card on the printing screen, press Settings → Print Settings → Z axis movement → Leveling, Check whether the platform fits evenly with the paper by referring to the steps on Page 7.



3. After confirming that the calibration card fits evenly, lock the four screws of the platform.



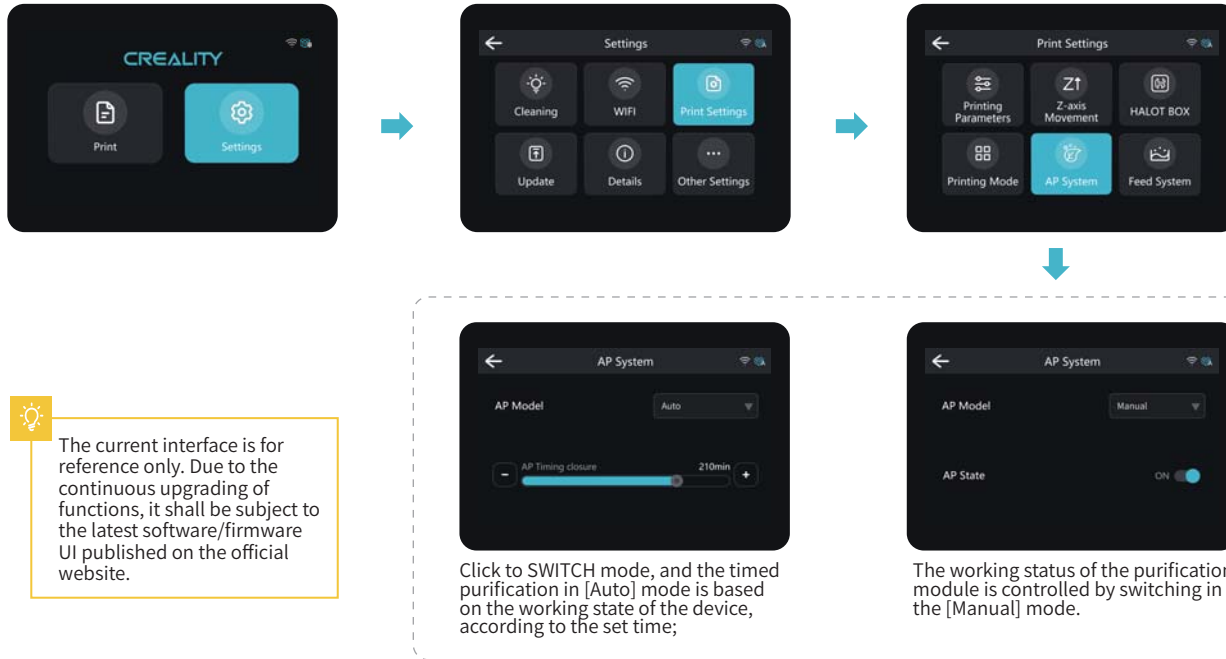
Note: The platform has been leveled at the factory. If it needs leveling due to transportation or other reasons, please follow the steps below to adjust the printing platform.

6. Leveling Guide

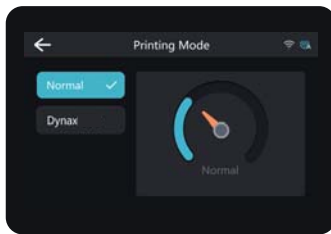
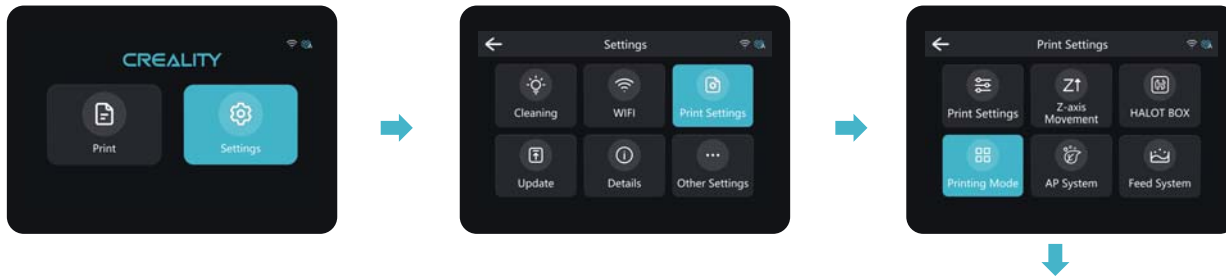


The current interface is for reference only. Due to the continuous upgrading of functions, it shall be subject to the latest software/firmware UI published on the official website.

7. Guidance on the use of the purification system/module



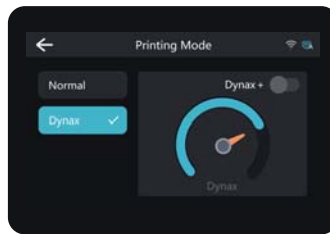
8. Guidance on the use of Dynax mode (high-speed mode)



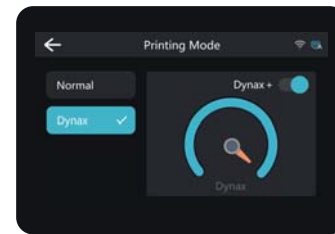
[Normal] Description: This mode limits the printing speed of the device and some parameter settings;

Description of Dynax Mode:

1. [Buffer Layer] Parameter description: to limit the speed of the device within this setting and to prevent resin splashing;
2. When the mode is not unlocked, the slice file is executed only in the maximum value of the normal mode using the high-speed parameter;
3. The [Normal Mode] is the default for new devices and device resets.
4. [Dynax+] Mode: When this mode is turned on, the printing speed will be pushed to the maximum. But the surface of the printed model may not be as delicate as in other modes.



[Dynax] Description: In this mode, the upper limit of the device's printing speed is increased and some parameter settings are unlocked.



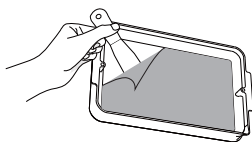
Note: There are some requirements for Dynax mode to be operated by the user. Please contact the official customer service if you have any questions during use.



The current interface is for reference only. Due to the continuous upgrading of functions, it shall be subject to the latest software/firmware UI published on the official website.

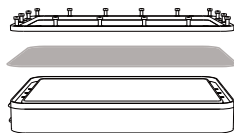
9. Release Film (FEP) Replacement

1



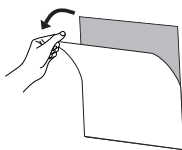
Recycle the resin in the resin vat back into the original bottle, then clean up. (Note: Please make sure there are no residue matter left inside the Vat)

2



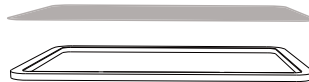
Remove all the screws at the bottom of the resin vat, take out the fixing plate and the release film. (Note: The fixing plate and the vat bottom need to be cleaned)

3



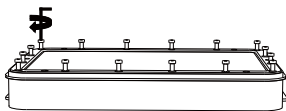
Tear off the release film protective film

4



Position the release film and the fixing plate (Note: When installing, distinguish the front and back of the release film according to the label instructions on the release film).

5



Press into the bottom of the vat, and tighten the screws diagonally across from each other one at a time. (Note: Make sure there are no debris between the fixing plate and release film)

6



Make sure the release film is flat and tight after installation. (Note: If not flat or loose, please check whether the screws are locked or the release film is abnormal)

Parameters



Size: 286*198mm

THK

Thickness: 0.3mm



Light Transmittance

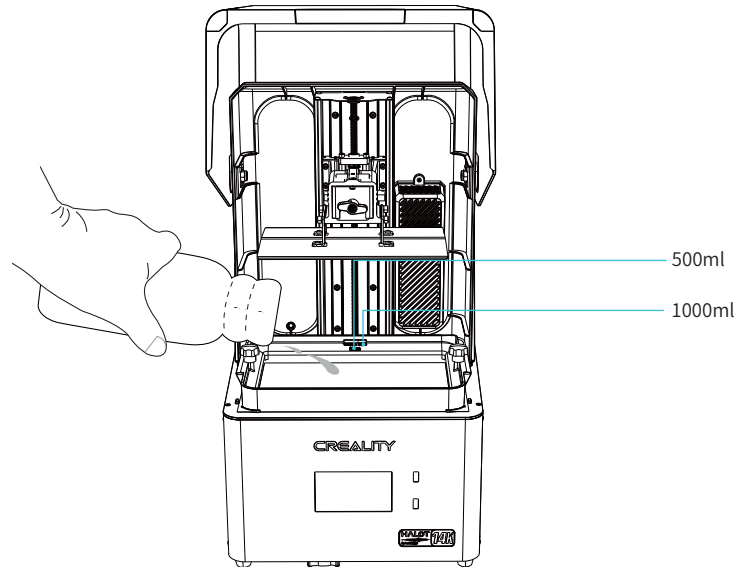
92%

■ 温馨提示: ① 图示为换膜步骤参考, 请以实物为准; 如离型膜安装后存在多余边缘, 需将多余边缘切割;

② 离型膜使用超过200小时建议更换。

10. Resin in

Pour the UV photosensitive resin into the resin vat. The slot capacity is 500ml/1000ml.



Tips: How to change resin?

Take out the resin vat slowly, pour out the remaining resin into the container, clean the resin vat, pour in new resin, and then install the resin vat to the machine.



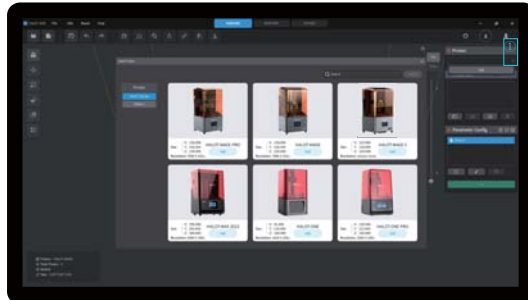
Caution:

- ① Resin may cause skin irritation or an allergic skin reaction. Please wear gloves before use to avoid direct contact with the skin.
- ② Do not exceed the maximum capacity scale of the tray when pouring in filaments to prevent them from overflowing during the printing process

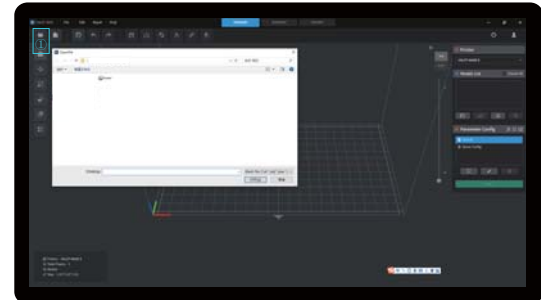
11. USB Disk Printing



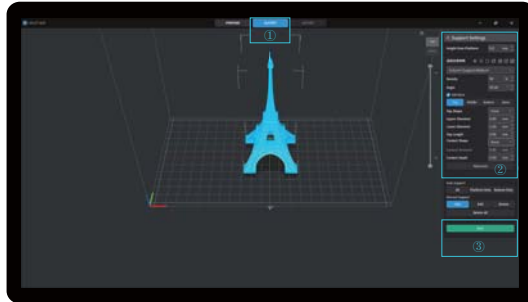
1. Slicer



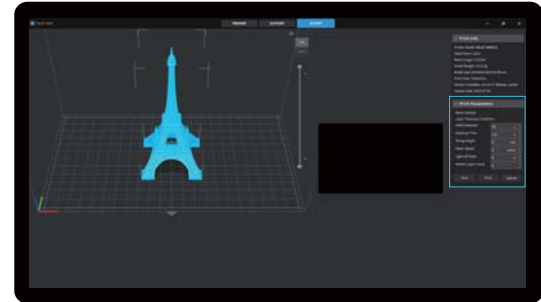
1. Open the HALOT BOX software, click the icon ① in the upper right corner to add the printer;



2. Click the icon ① in the upper left corner to open the model file;



3. If a support needs to be added to the model, click the icon ① above and set the corresponding parameters ②. Then click "Slice" ③ to start slicing;



4. After the slicing is completed, the printing parameters can be set according to the model requirements.

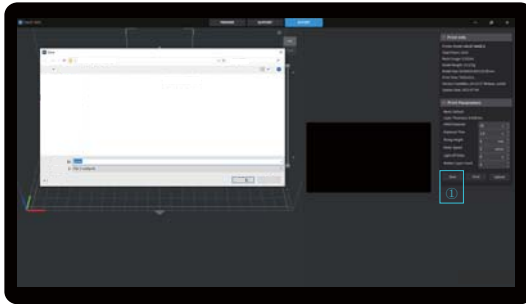


Note: The published UI of slicing software shall prevail for the interfaces of HALOT BOX, and CHITUBOX.

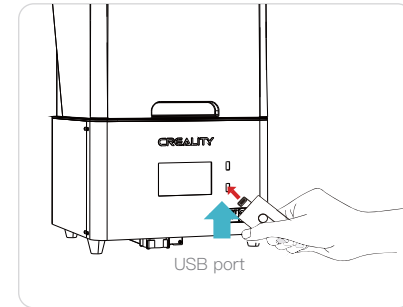
11. USB Disk Printing



2. Print



1. Click Save ① to save the generated cxdlp type file to a USB drive.



2. Insert the USB flash disk, which can be pulled out after the file import is finished.

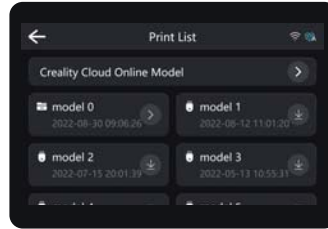


The current interface is for reference only. Due to the continuous upgrading of functions, it shall be subject to the latest software/firmware UI published on the official website.



Warning: During the printing process the machine can't be shaken, so as not to avoid influencing affect the printing quality.

11. USB Disk Printing



1. Select USB disk files;

2. Choose to use parameters;



3. Press "Start" button;

4. Printing...



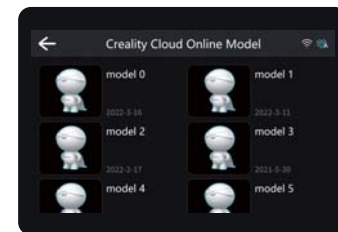
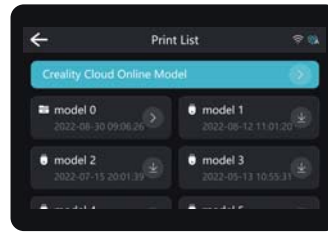
The current interface is for reference only. Due to the continuous upgrading of functions, it shall be subject to the latest software/firmware UI published on the official website.

12. Creality Cloud Online

Make sure WiFi is correctly connected before using online printing

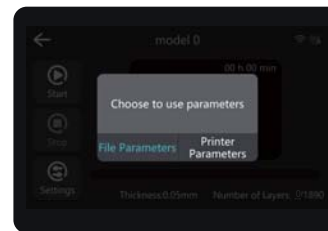
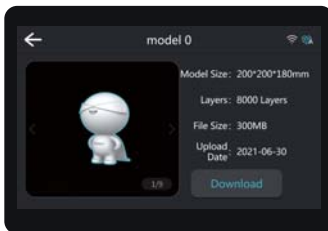
Steps: Settings → WiFi → Select the corresponding WiFi.

Warm Tips: ① Only 2.4GHz WiFi is applicable to the 3D printer, and it cannot be connect to 5GHz WiFi routers;
② Only WPA-PSK/WPA2-PSK security protocol is applicable to the 3D printer, and other protocols may result in the failure to connect the printer to WiFi properly. To change the security protocol, users may change it in setting interface of the router.



1. Click Creality Cloud online model;

2. Select the model;



3. Download the model;

4. Choos to use parameters;

5. Click "Start" to print.

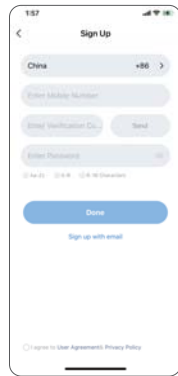


The current interface is for reference only. Due to the continuous upgrading of functions, it shall be subject to the latest software/firmware UI published on the official website.

13. Creality Cloud App Print



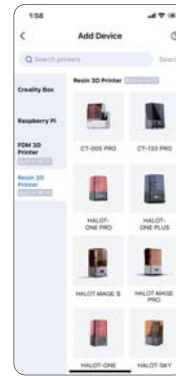
1.Download



2.Register



3. Add equipment



4. Scan QR Code
Settings → Detail →
Connect to Creality Cloud → QR code



5. Device naming



6. Select model, set the printer and parameters, and click "Slice".



7. Upon completion of slicing, click "Printer".



8. Select device



9. Print progress

Notes:

1. The steps for adding devices vary for different mobile phone operating systems;
2. Set the correct area in "Settings - Other Settings - Language and Area".
3. Make sure WiFi is correctly connected before using online printing.

Notes:

The current interface is for reference only. Due to the continuous upgrading of functions, it shall be subject to the latest software/firmware UI published on the official website.

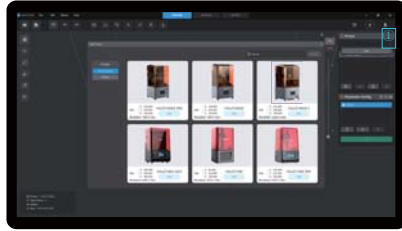
14. WIFI Print

1. Slicer

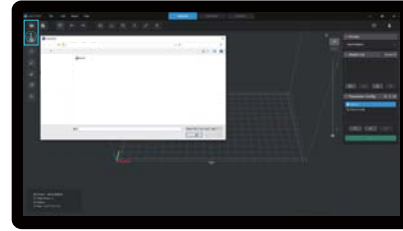


The current interface is for reference only. Due to the continuous upgrading of functions, it shall be subject to the latest software/firmware UI published on the official website.

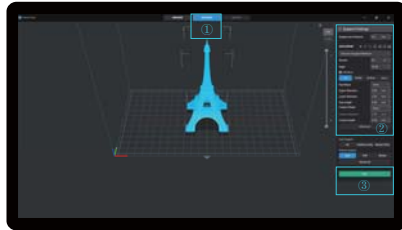
1. Before printing, make sure HALOT BOX and the printer are connected to the same WIFI.
2. Enter password before transferring the file, Be consistent with the password set on the printer. (Click "Print Settings → HALOT BOX → Password")



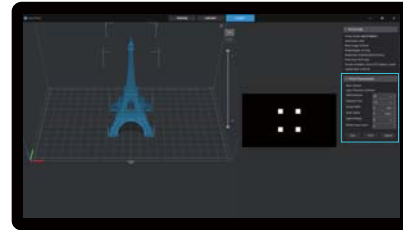
1. Open the HALOT BOX software, click the icon ① in the upper right corner to add the printer;



2. Click the icon ① in the upper left corner to open the model file;



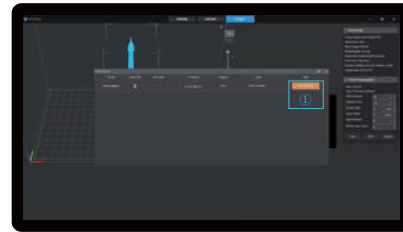
3. If a support needs to be added to the model, click the icon ① above and set the corresponding parameters ②. Then click "Slice" ③ to start slicing;



4. After the slicing is completed, the printing parameters can be set according to the model requirements.



5. Click Print ①, enter the password and click Start Transfer.

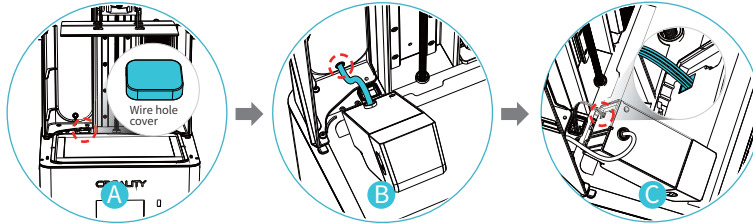


6. Once the transmission is over, select the file on the machine to start printing ①.

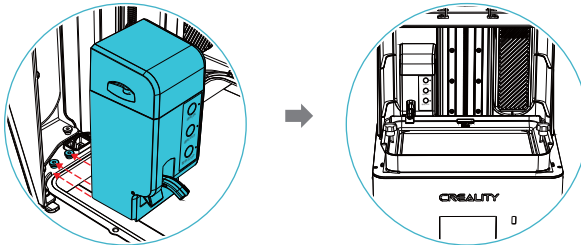
15. Machine Function Description

1. Guidance on the use of the feed system/module (Optional Function):

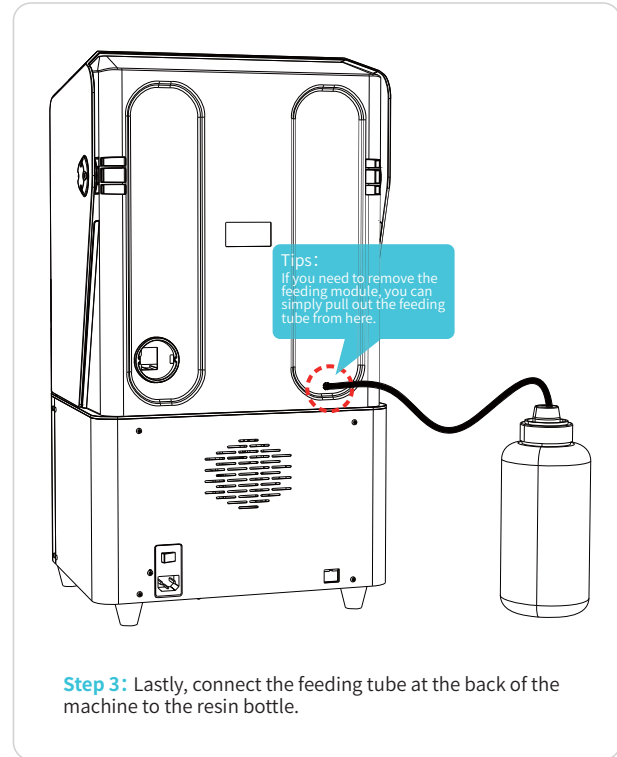
① Installation steps:



Step 1: A. First, remove the material tray and the wire hole cover. B. Then, thread the feeding tube of the feeding module through the machine's back tube hole. C. Next, connect the feeding module's wire as shown.

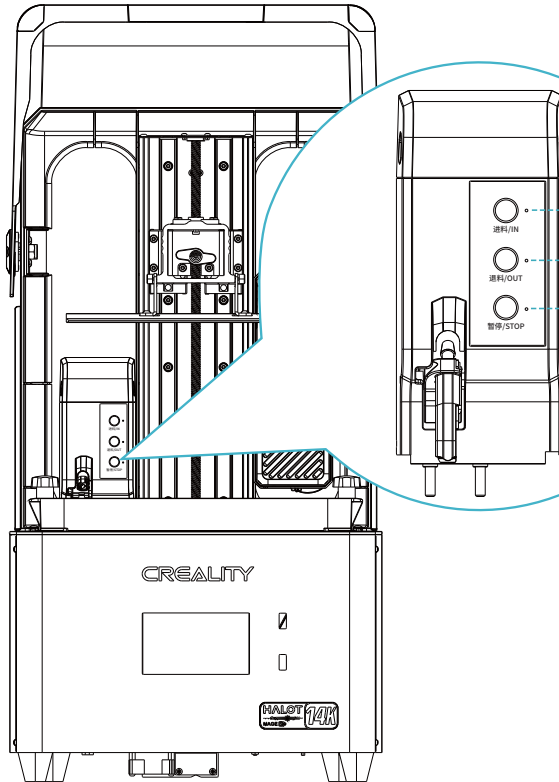


Step 2: Finally, align the feeding module with the middle board's fixed screws in the direction indicated by the arrows and push it in to secure it. After installing and securing the feeding module, reinstall the material tray.



Step 3: Lastly, connect the feeding tube at the back of the machine to the resin bottle.

15. Machine Function Description



② Interface Definition:

- 【进料/IN】: click to suck in the resin, and then stop when the resin level rises to the sensing height; click again to stop it;
- 【退料/OUT】: click to perform resin extraction, and click again to stop.
- 【暂停/STOP】: click to stop the module functioning;

③ Instructions for the LEDs:

1. The LED is always ON to indicate that the functionality is being performed;
2. LED3 is always ON to indicate that the module is not working;
3. Three flashing LEDs indicate that it is in [Auto Mode].



Note:

- ① Before opening [Auto Mode], please make sure that the resin bottle and tank levels are normal.
- ② If there is no response when clicking [退料/OUT], you must click the button again to stop.

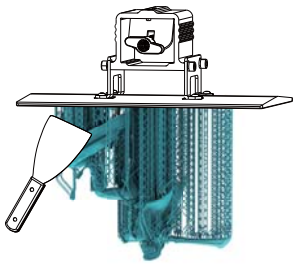
15. Machine Function Description

④ **Instructions for use:** Intelligent control is possible by clicking on the Halot OS function module.

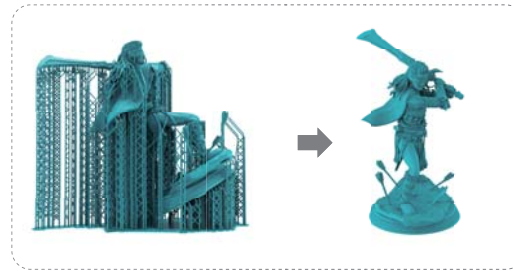


The current interface is for reference only. Due to the continuous upgrading of functions, it shall be subject to the latest software/firmware UI published on the official website.

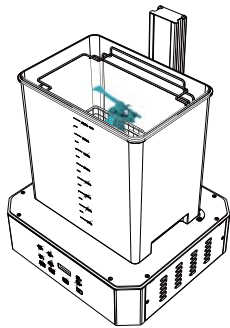
16. Post-processing Guide



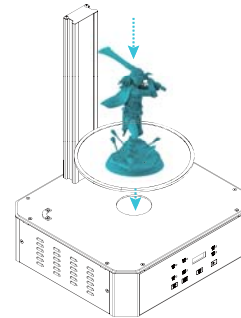
1. Remove the printed model with a blade;



2. Remove the support from the surface of the model;



3. Clean the model;

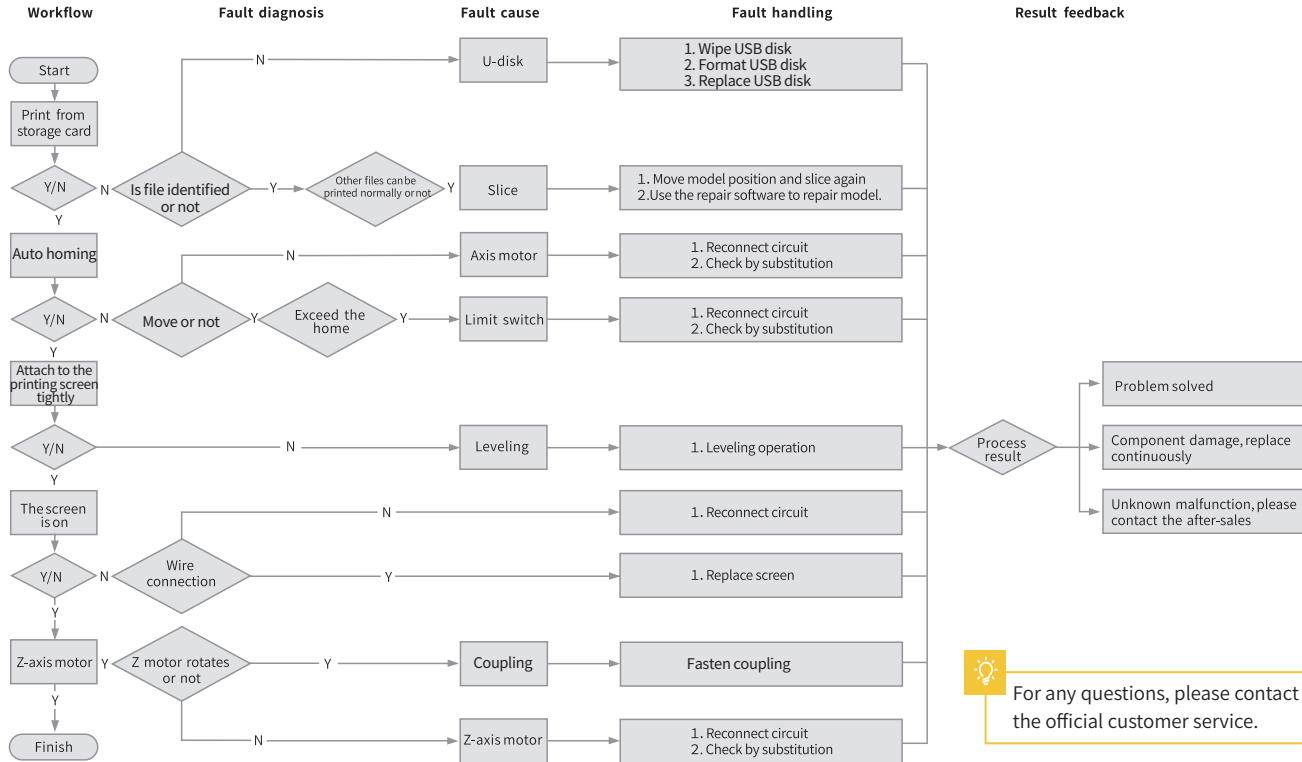


4. Cure the model;

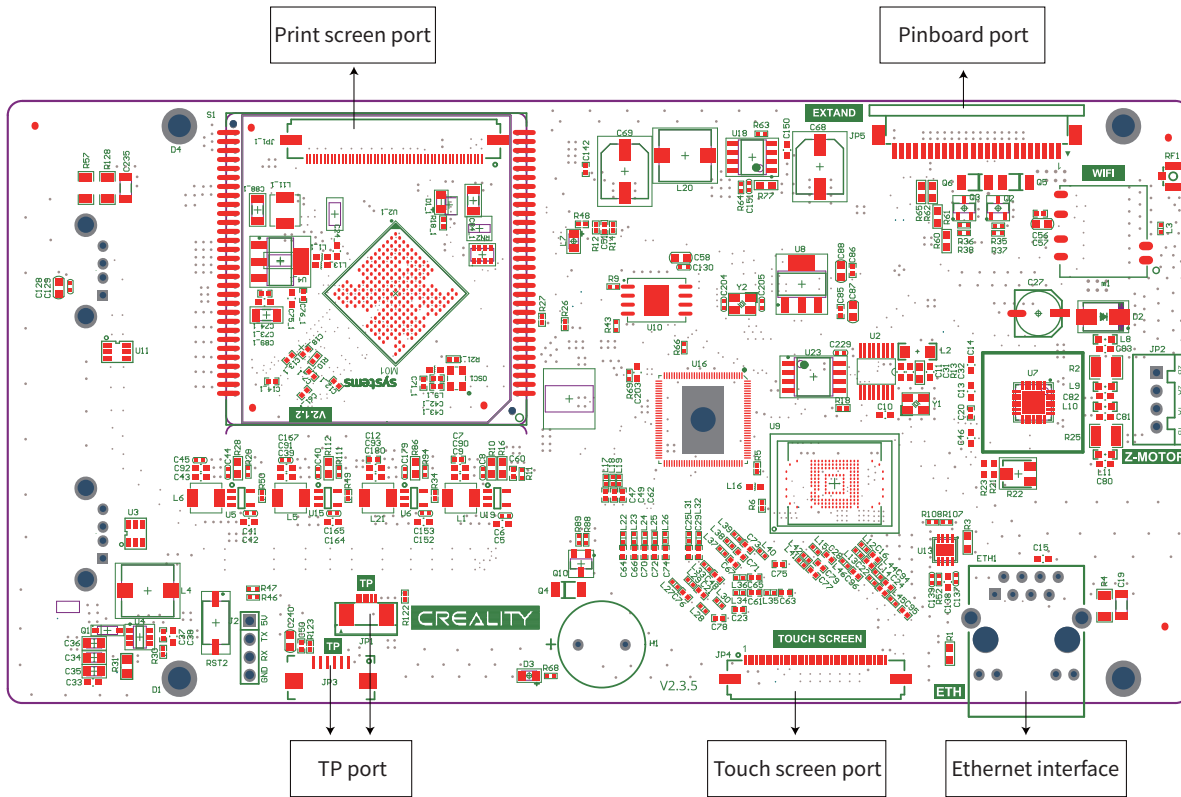


Please dismantle the model with reference to this process and consult the official customer service if you have any questions.

17. Troubleshooting

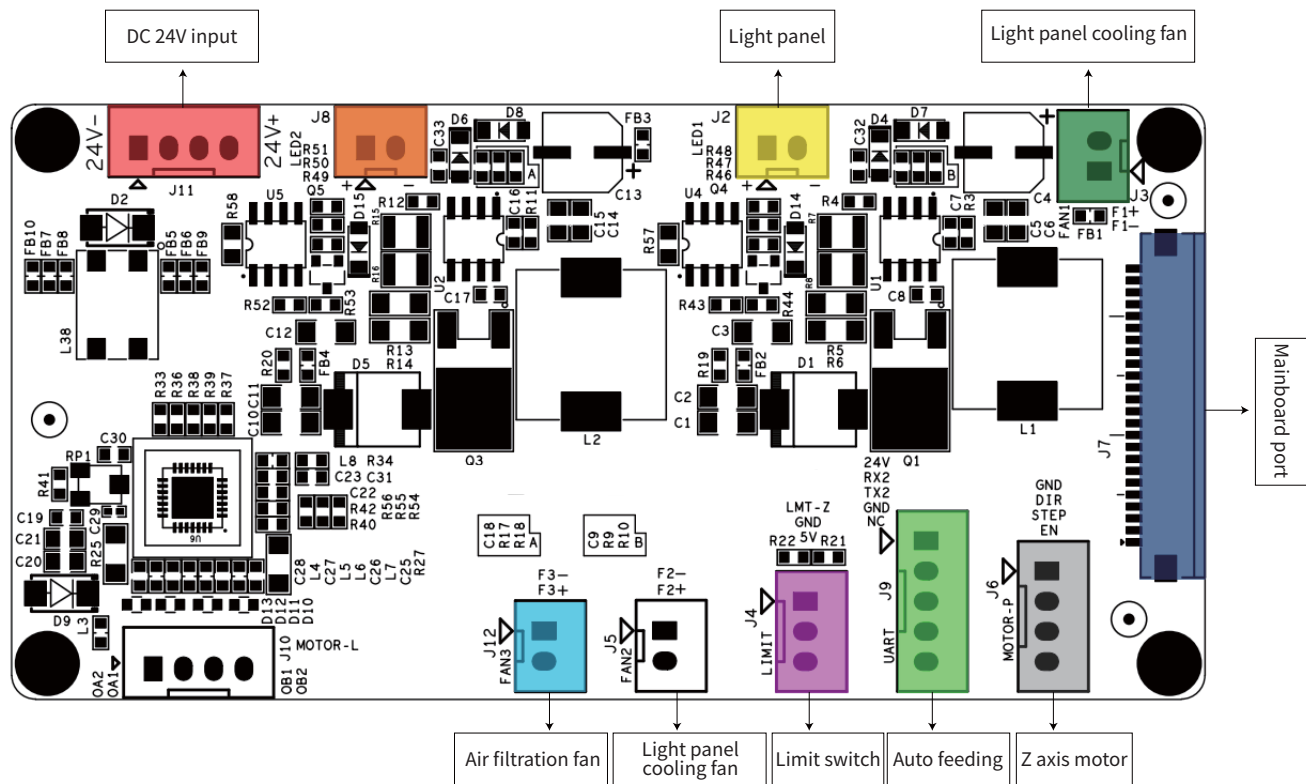


18. Circuit board wiring diagram



Mainboard circuit wiring diagram

18. Circuit board wiring diagram



Pinboard circuit wiring diagram

FCC WARNING



This device complies with part 15 of the FCC Rules. Operation is subject to the following two conditions:

(1) This device may not cause harmful interference, and (2) this device must accept any interference received, including interference that may cause undesired operation.

FCC warning:

Any Changes or modifications not expressly approved by the party responsible for compliance could void the user's authority to operate the equipment.

Note: This equipment has been tested and found to comply with the limits for a Class B digital device, pursuant to part 15 of the FCC Rules. These limits are designed to provide reasonable protection against harmful interference in a residential installation. This equipment generates uses and can radiate radio frequency energy and, if not installed and used in accordance with the instructions, may cause harmful interference to radio communications. However, there is no guarantee that interference will not occur in a particular installation. If this equipment does cause harmful interference to radio or television reception, which can be determined by turning the equipment off and on, the user is encouraged to try to correct the interference by one or more of the following measures:

- Reorient or relocate the receiving antenna.
- Increase the separation between the equipment and receiver.
- Connect the equipment into an outlet on a circuit different from that to which the receiver is connected.
- Consult the dealer or an experienced radio/TV technician for help.

This equipment complies with FCC radiation exposure limits set forth for an uncontrolled environment. This equipment should be installed and operated with minimum distance 20cm between the radiator & your body.

Due to the differences between different machine models, the actual objects and the images can differ. Please refer to the actual machine. The final explanation rights shall be reserved by Shenzhen Creality 3D Technology Co., Ltd.



SHENZHEN CREALITY 3D TECHNO LOGY CO.,LTD.

18th Floor, JinXiuHongDu Building, Meilong Road, Xinniu Community,
Minzhi Street, Longhua District, Shenzhen City, China.

Official Website: www.creality.com

Tel: +86 755-8523 4565

E-mail: cs@creality.com



R 214-240122

