

立式唤醒灯用户说明书

Smart Wake up Light User Manual

开箱检查

感谢您购买我们的产品，使用前请仔细阅读说明书，说明书包含重要的安全建议和用户说明，请按照说明书操作，避免因错误使用而损坏产品。在收到产品时，请检查产品是否完好无损。

Unboxing Check

Thank you for purchasing our products, please read the instruction manual carefully before use. Instruction manual contains necessary safety advice and user instructions, follow the instruction manual to operate in order to avoid damaging the product for misuse. Check the product in good condition when received.

包装列表:

立式唤醒灯 x 1

无线遥控器 x 1

USB 充电线 x 1

用户说明书 x 1

Package List:

Smart Wake up Light x 1

Remote Control x 1

USB Cable x 1

User Manual x 1

如何使用该产品

1. 严格按照说明书指示操作，请勿拆卸主机和配件。
2. 本产品为 LED 灯，适用于室内装饰、照明使用。
3. 可用手机蓝牙连接“BL-HXD02”后播放音乐。
4. 主机使用遥控器控制灯体，确保遥控器指向灯体。
5. 本产品仅支持 2.4G HZ Wi-Fi，不支持 5G HZ Wi-Fi。
6. 主机自带时钟显示，联网后时钟会自动校准时间。
7. APP 内置 15 首白噪音歌曲，可自定义添加喜欢的灯光+白噪音组成多种律动场景。
8. 生物节律功能：APP 中可根据用户喜好需求，自定义产品开机/关机时间。

How to Use:

1. Strictly in accordance with the instructions of this operation, do not disassemble the host and accessories.
2. Our product is the LED light and suitable for indoor lighting decorations.
3. Connect Bluetooth “BL-HXD02” of the smart phone to play music.
4. Use the remote to control the light, make sure the remote control is pointing at the host.
5. The product only supports 2.4GHz Wi-Fi, not 5GHz Wi-Fi.
6. The product with the time clock function, the clock can automatically regulate the time once connected network.
7. Built-in 15 white noise sounds on the app, easy custom any lighting mode you like and choose the white noise sound to create various rhythmic scenes.
8. The app with biorhythm function can custom the schedule of product switch on/off to meet the user different demand.

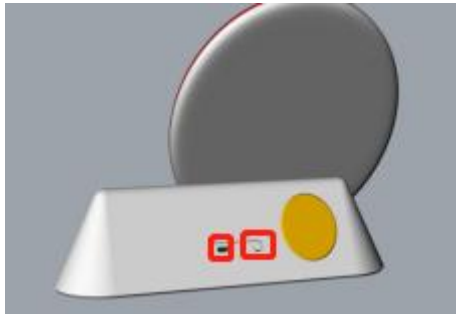
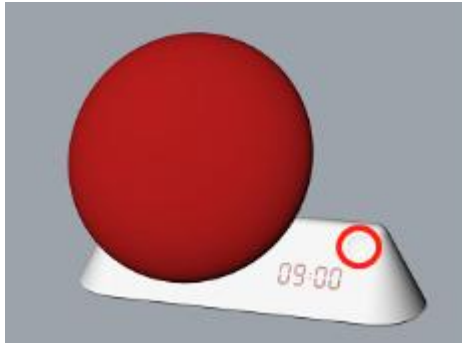
1. 手动模式

立式唤醒灯用户说明书

1. Manual Mode

主机按键说明

Host Buttons Description



a: 主机正面设置有圆形按键，短按控制主机开/关。主机开机默认暖白灯光、亮度为 50%、默认蓝牙模式（待连接状态），关机后需要操作圆形按键或 APP 可唤醒主机（注：关机后使用遥控器无法唤醒主机）。

b: 主机正面设置有时钟显示区域，联网后会自动校准时钟时间。

c: 主机背部带一个 type-c 电源接口（电源输入 5V2A）。

d: 主机背部设置有圆形按键，长按 6S 后进入 APP 配网模式。

a: Short press the round button on the device front to control the device switch on/off. The device turns on with warm white light (50% brightness) by default. The default status is Bluetooth mode (waiting for connection), Press the button or use the app to wake up the device when shut down. (Note: the remote cannot wake up the device when shut down)

b: The time clock function on the device front can automatically regulate the time once connected network.

c: Type-C USB port on the back of the device. (Input: 5V 2A)

d: Long press the round button on the back of the device over 6s to the app network pairing.

遥控器功能说明

Remote Control Function Description

立式唤醒灯用户说明书



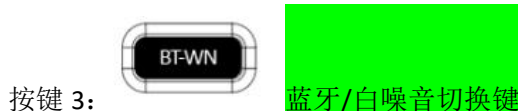
按键 1: 控制 LED 灯光开/关

LED: Control the LED light switch on/off



按键 2: 控制时钟显示开/关

Clock: Control the time clock function switch on/off



按键 3: 蓝牙/白噪音切换键

BT-WN: Bluetooth speaker and white noise modes switching



按键 4: /红色灯光--按“R”第一下时红灯亮，按第二下时红灯熄灭

R: Control the red light on/off (at basic of light on at first time)

立式唤醒灯用户说明书



按键 5: 绿色灯光--按“G”第一下时绿灯亮，按第二下时绿灯熄灭

G: Control the green light on/off (at basic of light on at first time)



按键 6: 蓝色灯光--按“B”第一下时蓝灯亮，按第二下时蓝灯熄灭

B: Control the blue light on/off (at basic of light on at first time)



按键 7: 白色灯光--按“W”第一下时暖白灯亮，按第二下时冷白灯亮，按第三下时白色灯光熄灭

W: Switch the warm white light on and cool white light on, press repeatedly to turn the light off



按键区域 8:

暂停 音量加大（长按连续加大） 音量减小（长按连续减小） 上一曲 下一曲

Pause

Volume up (long press to continuously increase volume)

Volume Down (long press to continuously decrease volume)

Previous Song

Next Song



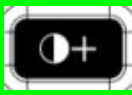
按键 9: 单色循环

FADE 1: Single color lighting mode



按键 10: LED 亮度调节（四档可调：100%-70%-40%-10%）

LED Brightness: 4 levels of brightness adjustment (100% - 70% - 40% - 10%)



按键 11: 白光色温+

White light colour temperature +



按键 12: 双色循环

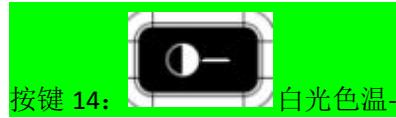
FADE 2: Mix-colored lighting mode



按键 13: 控制 LED 呼吸开/关

立式唤醒灯用户说明书

Breathe: Control the LED light breathing mode on/off



按键 14: 白光色温-

White light colour temperature -



按键区域 15:

定时 1 小时 (灯光灯光闪烁一次)

定时 2 小时 (灯体灯光闪烁两次)

取消定时 (灯光灯光闪烁三次)

1H: The light flash once as prompting

2H: The light flash 2 times as prompting

Timer Off: The light flash 3 times as prompting

2. Wi-Fi 模式

Wi-Fi 模式设置: (1) 必须先把手机的 Wi-Fi 打开, 否则产品无法与手机连接; (2) 必须把手机的位置信息打开, 否则手机无法显示所连接 Wi-Fi 的名称; (3) 必须把手机连接到路由器 2.4G 的频率上, 本暂不支持其它频率的通讯。(注: 配网过程中遥控器无法使用)

2. Wi-Fi Mode

Wi-Fi Setting: (1) Check your phone Wi-Fi "On", or the product won't be connected; (2) Enable the location information on your phone, or it cannot show the connected Wi-Fi name; (3) Connect your phone to a 2.4GHz network and other frequencies is not supported. (the remote cannot work at the network connecting process)

1. 下载 APP, 可直接扫描以下二维码 (注意: 2 个软件功能操作一致, 下面均以 Smart Life 为例):

1. Download the app by scanning the following QR codes (Notes: the same operations on the following two apps. Let us take "Smart Life" app for an example)



Smart Life



Tuya Smart

2. 通过 Google Play 搜索 Smart Life (适用于 Android 系统); 在 APP Store 中搜索 Smart Life (适用于 Apple-iOS) 并下载相应软件;

2. Search "Smart Life" app through Google Play(for Android) or APP Store(for Apple-iOS)

立式唤醒灯用户说明书

and download it

3. 注册并登录 APP

- 1) . 运行 Smart Life APP。
- 2) . 使用您的帐户和密码登录，首次使用时，您必须注册一个新帐户。

3. Register and log in to the app

1). Open "Smart Life"app

2). Log in your account and password. Please register a new account on first use

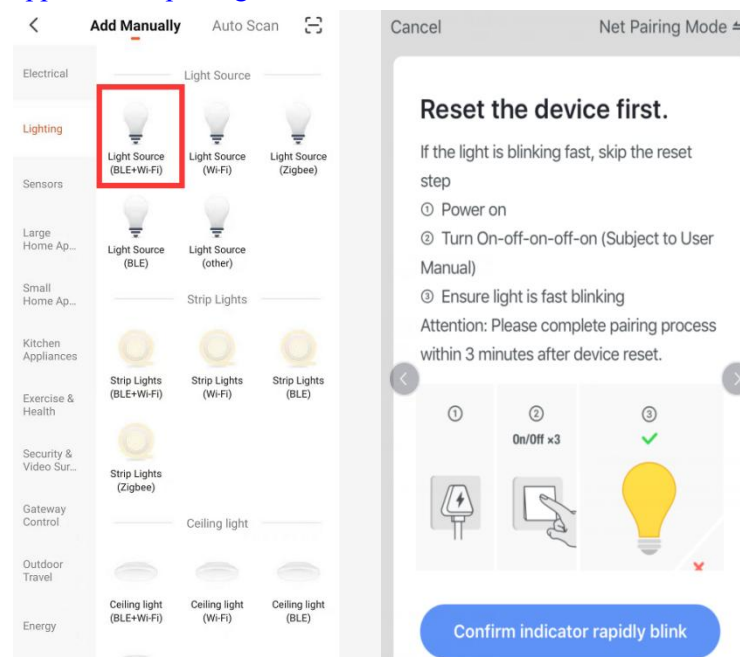
4. 配置

1) . 如何连接 Wi-Fi: 首先给立式唤醒灯连接电源适配器，届时长按主机后方小圆形按钮超过 6 秒后直到主机灯光显示白光并开始快闪，进入 APP 配网。

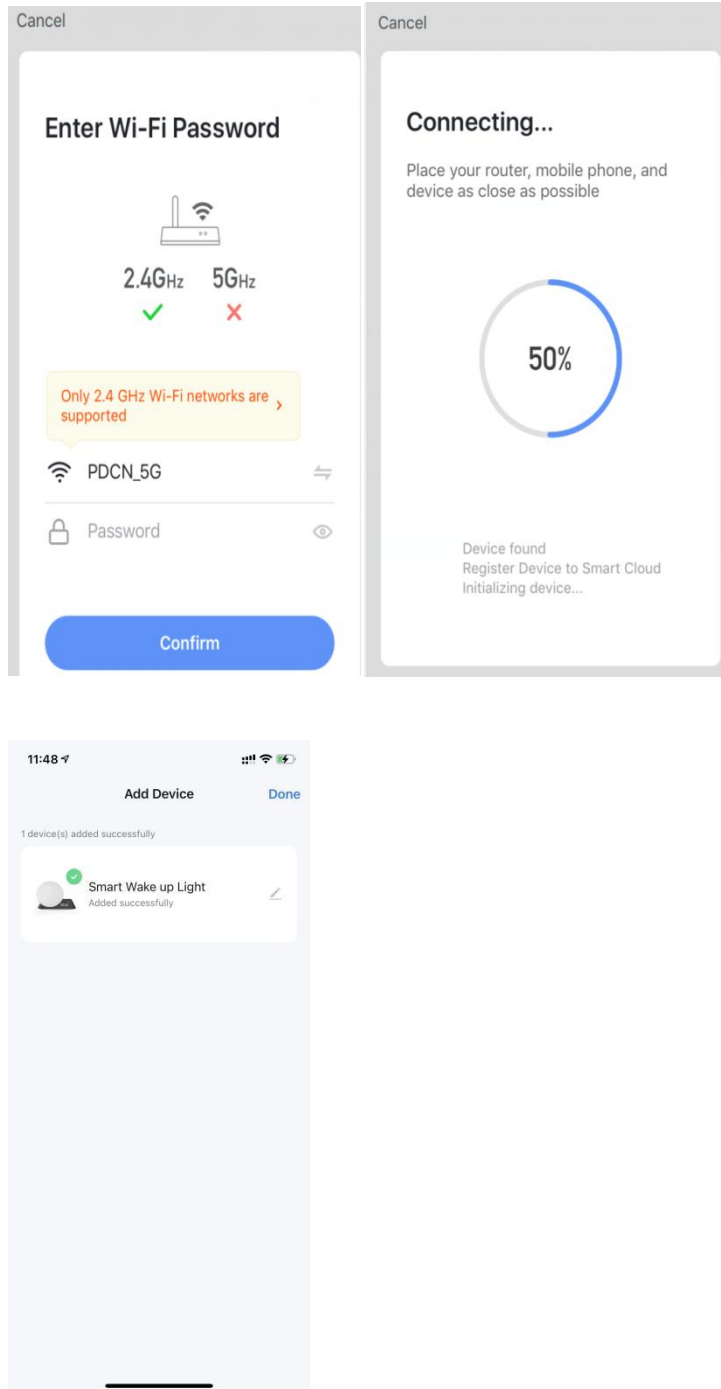
2) .打开 Smart Life APP，点击按钮“添加设备”，选择 Lighting，选择 Light Source（BLE+Wi-Fi）网络并输入密码（如果适用），点击“下一步”（注意：把手机连接到路由器 2.4G 的频率，当前不支持 5G 频段 WIFI 网络）。

4. Configuration

1). Connect to Wi-Fi: Connect the power supply of this wake up light, long press the round button on the back of the device over 6s till the device fast flash the white light, and it starts to app network pairing.



立式唤醒灯用户说明书



App 继续进行配置过程。连接后，将出现“添加成功”消息，此时已经成功连接立式唤醒灯 (Smart Wake up Light)

The app is on the configuration process. Once connected, it shows "device added successfully" that is the Smart Wake up Light has been connected successfully.



3.APP 功能介绍

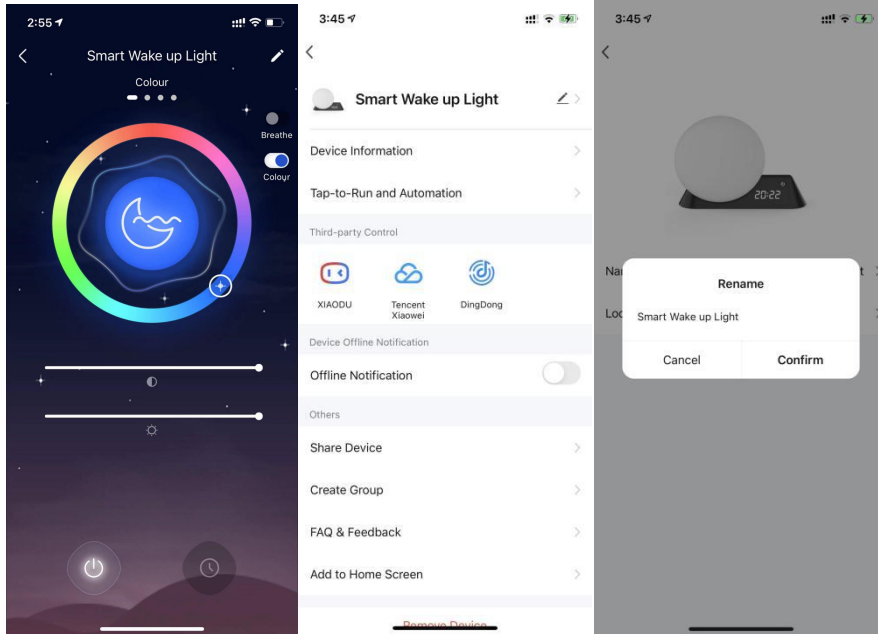
3. App Function Description


3.1 点击 Smart Wake up Light 图标登录，进入 APP 界面，点击中间总开关按钮，


立式唤醒灯用户说明书

可以开启/关闭设备，点击右上角  编辑图标，可以自定义产品名称。

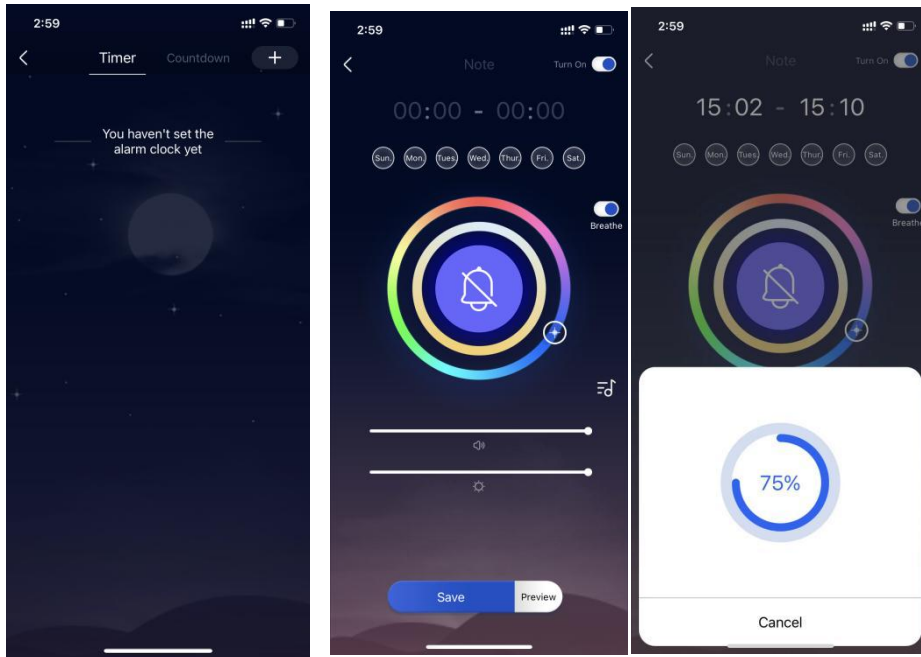
3.1 Click the "Smart Wake up Light" icon to the app main interface, touch " " to turn on/off the device, custom the product name via " " at the top right-hand corner.



3.2 点击 ，进入生物节律功能界面，点击定时图标，可开启设备自动定时开机/关机功能。伴随自定义的灯光颜色及亮度，白噪音歌曲及音量，实现智能生物节律功能（注：彩光、白光只可选其一，15首内置白噪音歌曲可选，点击右下角预览按钮，可预览选定效果展示）

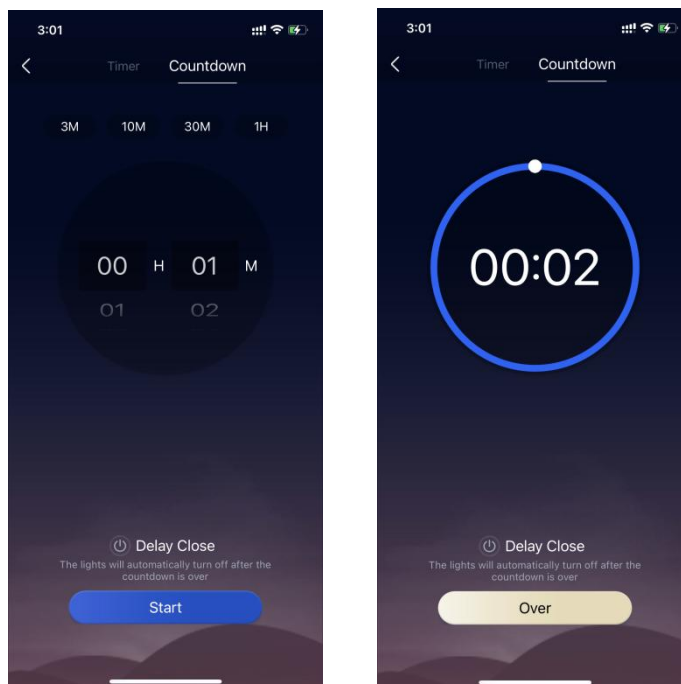
3.2 Click " " to biorhythm function interface, click "Timer" icon to make the device automatically turn on/off. With custom light colors and brightness, white noise sound and sound volume, it helps you achieve smart biorhythm function. (Note: only choose colour light or white light, 15 white noise sounds for options, click "Preview" at the bottom right to preview the selected effect)

立式唤醒灯用户说明书



3.3 点击倒计时图标，进入倒计时功能界面。点击“开始”按钮，即可执行倒计时关机功能（上方默认 4 种倒计时可选），此时再点击“结束”按钮，即可取消已设置的倒计时指令。

3.3 Click countdown icon to the countdown interface. Click "Start" to perform the countdown function (4 countdown options by default) and "Over" to cancel it.



3.4 主要有 4 个操作界面：

1). 彩光界面; 2). 白光界面; 3). 音乐界面; 4). 场景模式界面

3.4 Four Main Interface:

1). Colour Light Interface; 2). White Light Interface; 3). Music Play Interface; 4). Scene Interface

立式唤醒灯用户说明书

（1）彩光界面

功能如下：1). 开启/关闭彩光；2). 开启/关闭彩光呼吸状态；3). 滑动彩色转盘选择相应彩光颜色；4). 彩光亮度调节；5). 彩光色彩饱和度调节；

(1) Colour Light Interface

Features as follows: 1). turn on/off colour light; 2). turn on/off colour light breathing mode; 3). Choose the colour lights; 4). adjust colour light brightness; 5). adjust colour light saturation

总开关；彩光开关；呼吸开关；彩色转盘；彩光亮度；彩光色彩饱和度

Power Switch

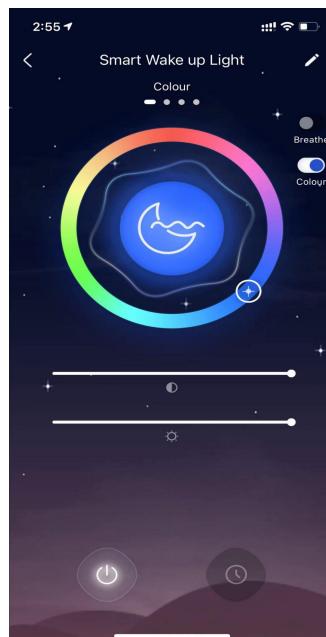
Colour Light Switch

Breathing Mode Switch

Colour Palette

Colour Light Brightness

Colour Light Saturation



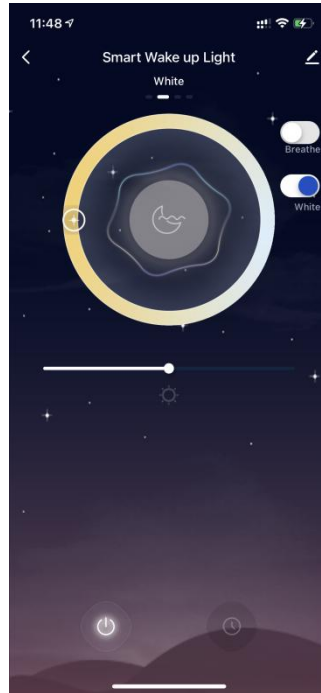
（2）白光界面

功能如下：1). 开启/关闭白光；2). 开启/关闭白光呼吸状态；3). 调节白光色温；4). 调节白光亮度；

(2) White Light Interface

Features as follows: 1). turn on/off white light; 2). turn on/off white light breathing mode; 3). adjust the white light color temperature; 4). adjust white light brightness

立式唤醒灯用户说明书

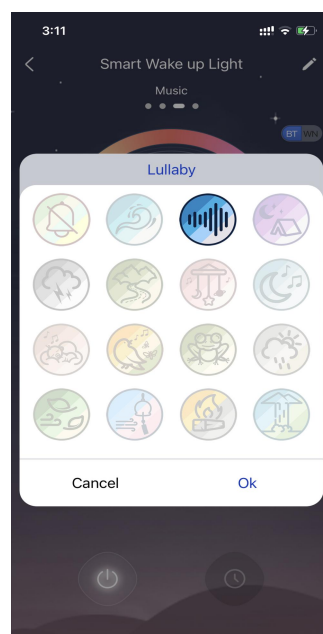
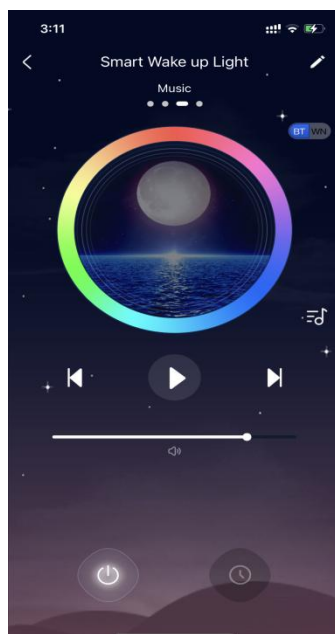


(3) 音乐界面:

功能如下: 1). 开启/暂停音乐播放, 上一曲/下一曲切换; 2). 调节音量大小; 3). 蓝牙与白噪音功能切换键; 4). 内置白噪音歌曲列表;

(3) Music Play Interface

Features as follows: 1). play/pause the music, switch the previous/the next song; 2). adjust the volume; 3). Bluetooth speaker and white noise mode switch; 4). built-in white noise sounds



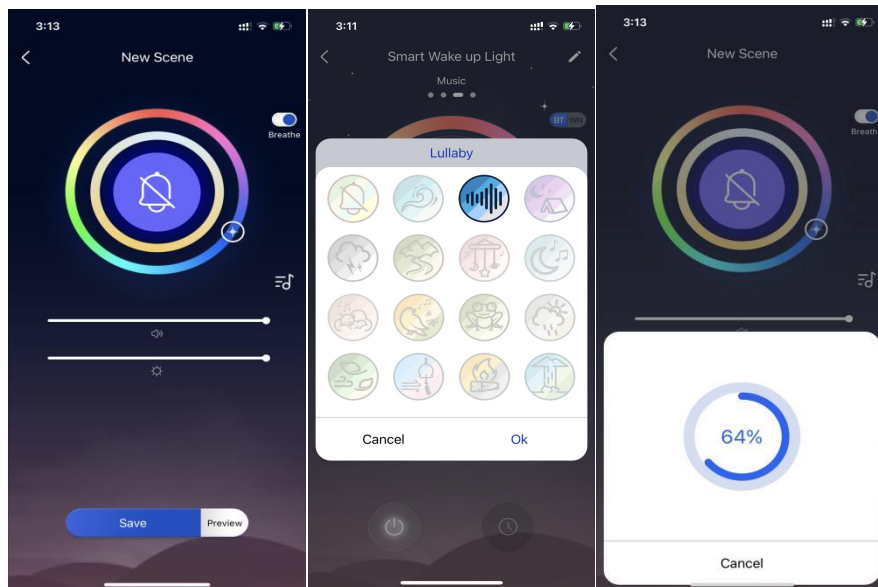
立式唤醒灯用户说明书

（4） 场景模式界面

a.自定义场景模式， 1). 彩光模式、呼吸开/关、亮度大小、色彩饱和度； 2). 白光模式、呼吸开/关、亮度大小 3).内置 15 首白噪音歌曲列表，可自定义添加喜欢的内置白噪音歌曲，或者不添加 4). 选择好自定义场景组合后，开启预览按钮，查看场景组合效果，确认满意后可编辑保存命名，方便后续直接启用自定义场景效果(注：彩光、白光只可选其一）。

(4) Scene Interface

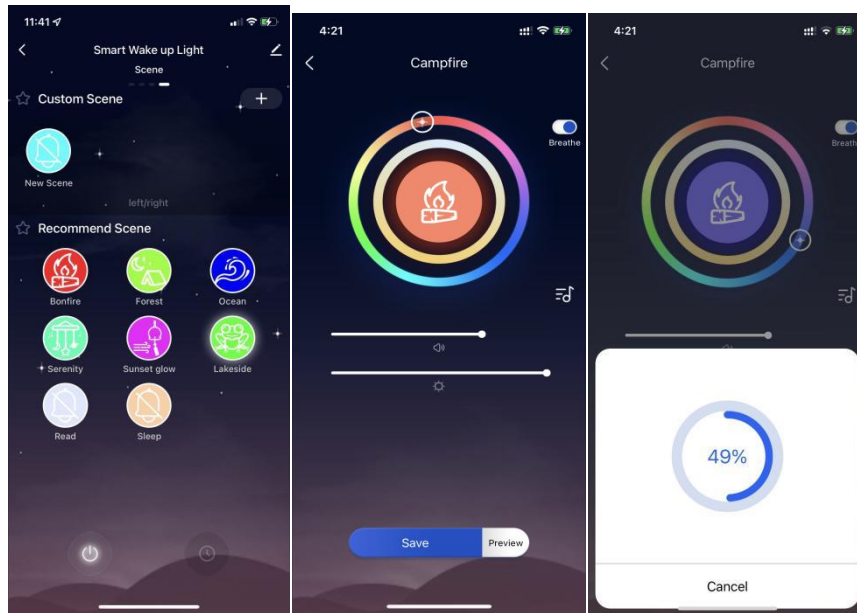
a. Custom Scene Mode: 1). colour light mode, breathe mode switch, adjust brightness, saturation; 2). white light mode, breathe mode switch, adjust brightness; 3). built-in 15 white noise sounds, easy add the white noise sounds you like; 4). choose your custom scenario, click "Preview" to view the selected effect. Once you are satisfied, you can edit and save your rename, convenient to restart your custom scenario effects next time (only choose colour light or white light)



b. 预设场景效果模式选择：点击对应预设场景图标，选择系统对应 8 种场景效果，也可以按上面操作，更改预设场景效果搭配组合。（注：预设场景只可编辑，不可删除）

b. Preset Scenario Mode Selection: click the preset scenario icon, select 8 scenario effects in the system, or follow the steps above to change the preset scenario effect combination (available to edit the preset scenario, but cannot delete)

立式唤醒灯用户说明书



如何与 Amazon Alexa 连接：

How to Connect with Amazon Alexa:

(1) 通过 Google Play 搜索 Smart Life (适用于 Android 系统)；在 APP Store 中搜索 Smart Life (适用于 Apple-iOS) 并下载相应软件；

(2) 启动应用程序并注册一个新帐户或[直接](#)登录（如果您已经注册））；

(3) 打开 Smart Life 设备并连接，使用“Smart Life 应用程序”；

(4) 重要说明：您可以使用智能生活应用程序重命名设备。因此，如果您将[立式唤醒灯 \(Smart Wake up Light\)](#)重命名为“Livingroom Light”，那么在步骤 9 中发现设备后，Echo 将获得相同的名称。

(5) 从 Amazon Market，Google Play 或 iOS App Store 下载 Amazon 的“Alexa”应用程序，并将 Echo 与“Alexa”应用连接；

(6) 在 Alexa Skills 目录中搜索 Smart Life；

(7) 点击启用 Smart Life 的技能，然后在链接页面上输入您的帐户用户名，密码和区域；

(8) 授权 Alexa 登陆您已注册过的 Smart Life 账号，对 Echo 说：Alexa，寻找设备，等待 Echo 说“发现完成”；

(9) 现在所有设置完成。尝试与 Echo 交谈，用语音控制您的设备。

(1) Search "Smart Life" app through Google Play (for Android) or APP Store (for Apple-iOS) and download it;

(2) Open the app and register a new account or directly log in (if registered);

(3) Turn on "Smart Life" app and connect to the network;

(4) Necessary Note: You can use "Smart Life" app to rename the device. For example, if you want to rename the Smart Wake up Light to “Livingroom Light”, please find this device in step 9 so that Echo will receive the updated name;

(5) Download "Amazon Alexa" app through Amazon Market, Google Play or iOS App Store, and connect the Echo with "Amazon Alexa";

立式唤醒灯用户说明书

- (6) Search "Smart Life" in the Amazon Alexa Skills;
- (7) Click to start the Smart Life skills in the Alexa Skills, enter your account name, password and region on this web page;
- (8) Authorize and allow Amazon Alexa to log in your Smart Life registered account, talk to Echo: "Alexa, search the device, please", once completion, Echo say: "Search completed";
- (9) All settings are finished and now you can talk to Amazon Alexa to control this device.

以下是 Smart Life 具有的语音命令：

Alexa, turn on Smart Wake up Light

Alexa, turn off Smart Wake up Light

Alexa, set Smart Wake up Light to 20 percent

Alexa, brighten/increase Smart Wake up Light

Alexa, dim/decrease Smart Wake up Light

Alexa, set Smart Wake up Light to green

Here are the Voice Commands on the Smart Life:

Alexa, turn on Smart Wake up Light

Alexa, turn off Smart Wake up Light

Alexa, set Smart Wake up Light to 20 percent

Alexa, brighten/increase Smart Wake up Light

Alexa, dim/decrease Smart Wake up Light

Alexa, set Smart Wake up Light to green

4.无法配网成功故障排除

4. Troubleshooting for Network Configuration

1. 验证 Wi-Fi 密码，方法如下

打开手机 Wi-Fi 列表，点击 Wi-Fi 名称，再点击不保存或者忽略此网络，然后重新连接，输入密码看是否连接成功，如不成功请输入正确的 Wi-Fi 密码。

2. 配网时无法显示家庭 Wi-Fi 名称，请查看手机“位置信息”功能是否打开。

3. 检查手机 Wi-Fi 是否连接的 2.4G 频率（其他频率不支持）。

4. Wi-Fi 名称不能出现中文，同时空格和特殊符号也不能出现。

5. Wi-Fi 密码不能为空，最多 58 位字符，建议尽量不要使用一些特殊符号。

6. 连接 Wi-Fi 时，尽量把产品靠近路由器，距离 5 米左右。

1. Verify the Wi-Fi password in the following ways

Open the Wi-Fi list on your phone, click Wi-Fi name and ignore it, then reconnect and enter the password again to ensure connecting successfully. If not, please use the correct Wi-Fi password.

2. If your phone cannot show your home Wi-Fi, please check the location information on your phone is enabled.

3. Please check your phone is connected with 2.4GHz Wi-Fi. (other frequencies is not supported)

4. Please check the Wi-Fi name cannot contain Chinese, blank and special characters.

5. Please check the Wi-Fi password cannot be empty, it can up to a maximum of 58 characters and try to avoid using special characters.

6. In Wi-Fi connection, Please keep the product close to the network router at a distance of 5

立式唤醒灯用户说明书

meters.

5. 产品规格:

5. Specifications:

外壳材质	ABS 工程塑料
主机输入额定电压	5VDC
最大功率/工作电流	10W/2A
喇叭参数	4 Ω 3W*1
功率输入	100-240V AC 50/60HZ 2.0A (与电源适配器一起使用时)
工作温度	-20~50℃/-4~122° F
存储温度	-20~60℃/-4~140° F
产品型号	BL-HXD02
蓝牙	蓝牙版本 5.0
Wi-Fi	支持 Wi-Fi 频段 2.4Ghz
FCC ID	2AXGMBL-HXD02
Host Material	ABS
Input Rated Voltage	5V DC
Maximum Power/Working Current	10W/2A
Speaker Parameter	4 Ω 3W x 1
Input Power	100-240V AC 50/60Hz 2.0A (work together with power adapter)
Operating Temperature	-20~50℃/-4~122° F
Storage Temperature	-20~60℃/-4~140° F
Product Model	BL-HXD02
Bluetooth	Bluetooth 5.0
Wi-Fi	Support 2.4GHz Wi-Fi
FCC ID	2AXGMBL-HXD02

立式唤醒灯用户说明书

FCC STATEMENT :

This device complies with Part 15 of the FCC Rules. Operation is subject to the following two conditions:

- (1) This device may not cause harmful interference, and
- (2) This device must accept any interference received, including interference that may cause undesired operation.

Warning: Changes or modifications not expressly approved by the party responsible for compliance could void the user's authority to operate the equipment.

NOTE: This equipment has been tested and found to comply with the limits for a Class B digital device, pursuant to Part 15 of the FCC Rules. These limits are designed to provide reasonable protection against harmful interference in a residential installation. This equipment generates uses and can radiate radio frequency energy and, if not installed and used in accordance with the instructions, may cause harmful interference to radio communications. However, there is no guarantee that interference will not occur in a particular installation. If this equipment does cause harmful interference to radio or television reception, which can be determined by turning the equipment off and on, the user is encouraged to try to correct the interference by one or more of the following measures:

- Reorient or relocate the receiving antenna.

- Increase the separation between the equipment and receiver.

- Connect the equipment into an outlet on a circuit different from that to which the receiver is connected.

- Consult the dealer or an experienced radio/TV technician for help.

FCC Radiation Exposure Statement:

This equipment complies with FCC radiation exposure limits set forth for an uncontrolled environment. This equipment should be installed and operated with minimum distance 20cm between the radiator & your body.