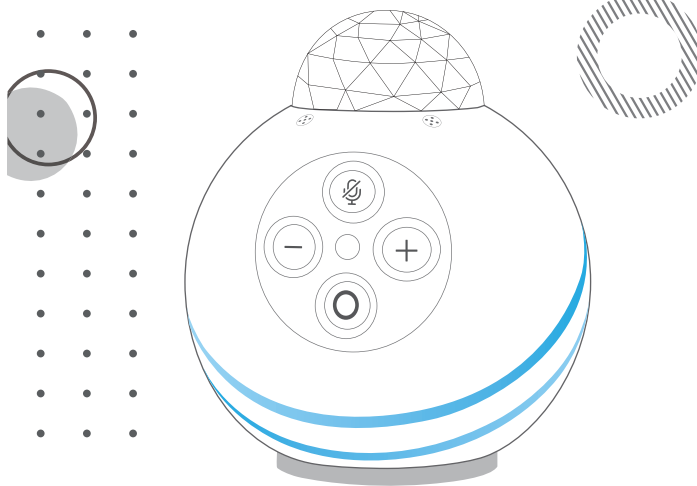




SMART STAR PROJECTOR

WITH ALEXA BUILT - IN



USER MANUAL

Unboxing Check

Thank you for purchasing our product, please read the instruction manual carefully before use. Instruction manual contains necessary safety advice and user instructions, follow the instruction manual to operate and avoid damaging the product for misuse. Check if the product in good condition when received.

Package List

Smart Star Projector x 1
Remote Control x 1
DC Power Plug x 1
User Manual x 1

How to Use

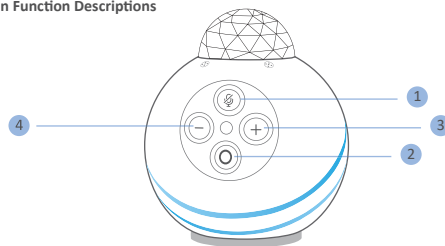
1. Strictly in accordance with the instructions of this operation, please do not disassemble the host and accessories.
2. This product is suitable for indoor projecting in the room ceiling or the wall, please do not use the light shone directly in eyes and keep away from children.
3. It is projected by LED and stars combinations, and please check the remote is pointing at the infrared sensor area on the host.
4. The product only supports 2.4GHz Wi-Fi, not 5GHz Wi-Fi.

Features

1. Our product adopts AFI voice control and star projector combinations solution. The use permissions of Alexa Built-in are described as follows: you need to bind music skills in the Alexa app, especially for Pandora, or it will remind you that there is no music bound. You can enjoy the paid music with VIP account. If not, you can listen to the free-paid music.
2. Music: Amazon Music, Audible, Kindle, iHeartRadio, TuneIn, Pandora, Deezer, Saavn, SiriusXM, Gimme, dHits.
3. Skills: weather forecast, news, travel traffic, Wikipedia, radio channel.
4. Functions: 3-meter far-field voice interaction, 30 alarm clocks groups setting, timers and reminders, announcements, messages, Do Not Disturb mode, Following mode, wake up, microphone off function, volume adjusted keys, annular interactive light, BLE network paired.
5. Smart Home Control: directly connect the Tuya IOT platform, Alexa voice control (directly use Alexa to control other products that Work with Alexa), Alexa Routine devices linkage.
6. Starry Projection Effects: the product projects 15 different ocean wave and stars effect combinations, an ideal gift for decoration and home ambiance.

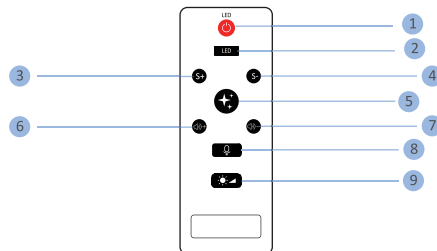
1. Manual Mode

Host Button Function Descriptions



- 1 The microphone on/off function (press the microphone off to turn off the "mic" function)
- 2 Long press over 6s to initialization mode, pair the network again and login the Amazon account; short press to activate/cancel the wake up function (wake up Alexa manually and have conversation with Alexa)
- 3 Short press to increase volume up, long press to continuously increase volume
- 4 Short press to decrease volume down, long press to continuously decrease volume

Remote Control Function Descriptions



- 1 Power Switch: control the product power on/off
- 2 LED Switch: change the RGBW ocean wave colors, the blue light by default when power on
- 3 S+: control the LED ocean wave light moving speed up
- 4 S-: control the LED ocean wave light moving speed down

- 5 Star Switch: control the star light switch on/off
- 6 Volume+: short press to increase volume up, long press over 1s to continuously increase volume
- 7 Volume-: short press to decrease volume down, long press over 1s to continuously decrease volume
- 8 Voice Control: control the sound-activated mode on/off, lights will fast flash according to the external sound or music rhythm
- 9 Brightness Adjustment: adjust the ocean wave light brightness (100%-70%-40%-10%-40%-70%-100%)

2. Wi-Fi Mode

Wi-Fi Setting: (1) Check your phone Wi-Fi "on", or the product won't be connected; (2) Enable the location information on your phone, or it cannot show the connected Wi-Fi name; (3) Connect your phone to 2.4GHz network and other frequencies is not supported.

1. Download the App by scanning the following QR codes (Notes: The same operations on the following two apps. Let us take "Smart Life" App for an example):



Smart Life



Tuya Smart

2. Search "Smart Life" App through Google Play(for Android) or APP Store(for Apple-iOS) and download it;

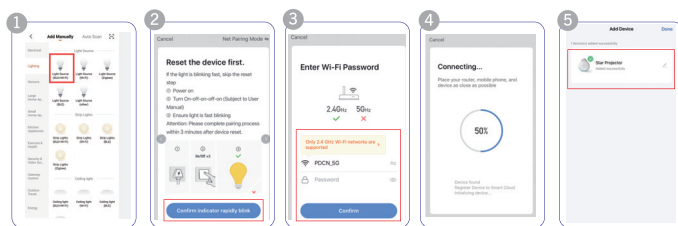
3. Register and log in to the App

- 1). open "Smart Life" App
- 2). log in your account and password. Please register a new account on first use

4. Configuration

1). Connect to the Wi-Fi: connect the smart star projector to the power supply, long press the host "microphone off" button over 6s to initialization mode, pair the network again and login the Amazon account.

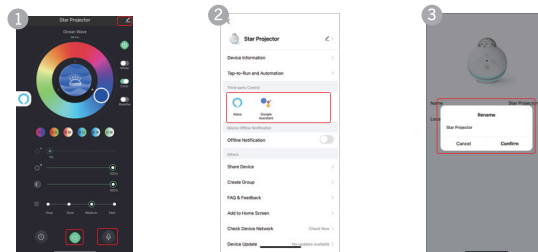
2). Open "Smart Life" App, click "Add Device", select "Lighting--Light Source(BLE+Wi-Fi)", choose your home Wi-Fi and enter password(if applicable), click "Next". (Note: Connect your phone to a 2.4GHz network router, 5GHz network not supported)



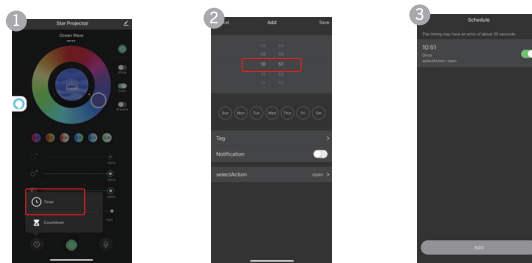
The app is on the configuration process. Once connected, it shows "Device added successfully" that is the Star Projector has been connected successfully.

App Functions

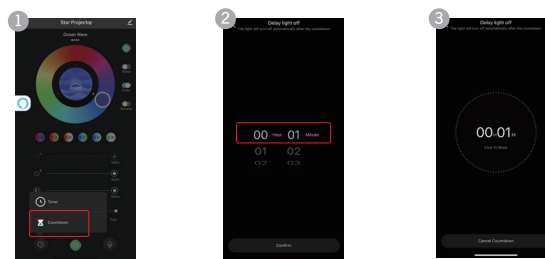
1. Click the "Star Projector" icon to the app interface, touch "🔘" to turn on/off the product; custom the product name via "📄" at the top right-hand corner; turn on the voice-activated mode via "🗣️".



2. Click "🕒" to set a standby time of the device: Make the device automatically turn on/off in a custom time. (Note: The device cannot set the auto-off timer over 4 hours)



3. Click "🕒" to the countdown interface, click "Start" to perform the countdown function and "Over" to cancel it.



4. Three Main Interfaces as follows: 1). Ocean Wave Light Interface; 2). Star Light Interface; 3). Scenario Interface

4.1 Ocean Wave Light Interface

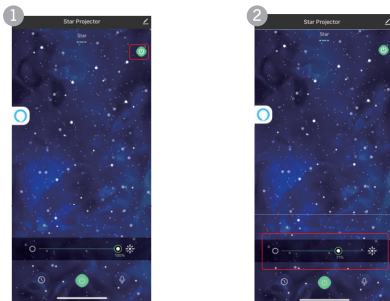
Features as follows: 1). turn on/off ocean wave light; 2). turn on/off white light/colour light; 3). turn on/off ocean wave light breathing mode; 4). adjust the colour lights; 5). choose 6 mixed-colors ocean wave effects; 6). adjust white light brightness; 7). adjust colour light brightness; 8). adjust colour light saturation; 9). adjust the ocean wave moving speed



- | | |
|---------------------------|---------------------------|
| ① Ocean Wave Light Switch | ⑥ Mixed Colors |
| ② White Light Switch | ⑦ White Light Brightness |
| ③ Colour Light Switch | ⑧ Colour Light Brightness |
| ④ Breathing Mode Switch | ⑨ Colour Light Saturation |
| ⑤ Color Palette | ⑩ Ocean Wave Moving Speed |

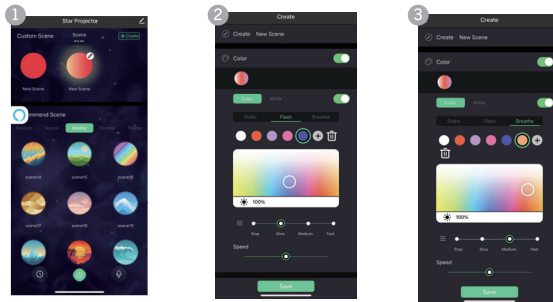
4.2 Star Light Interface

Features as follows: 1). turn on/off star light; 2). adjust star light brightness

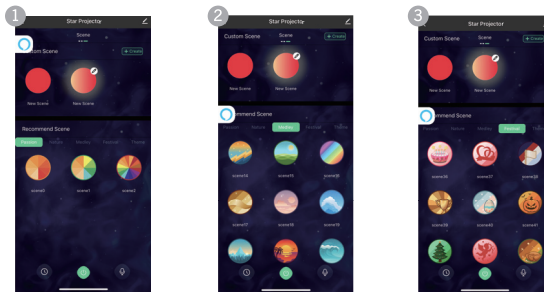


5. Scenario Interface

5.1 Features as follows: custom scenario mode, choose the modes combination: 1). colour light/white light combination, adjust brightness, 3 color changing modes: a. static mode; b. jumping mode; c. breathing mode. Custom the color changed speed in jumping and breathing modes; 2). star light on/off, adjust star light brightness; 3). choose your custom scenario and save your rename, convenient to restart your favorite scenario effects next time

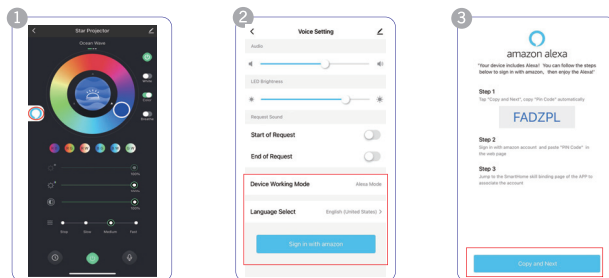


6. Preset Scenario Mode Selection: click the preset scenario icon, select 48 kinds of scenario mode effects in the system

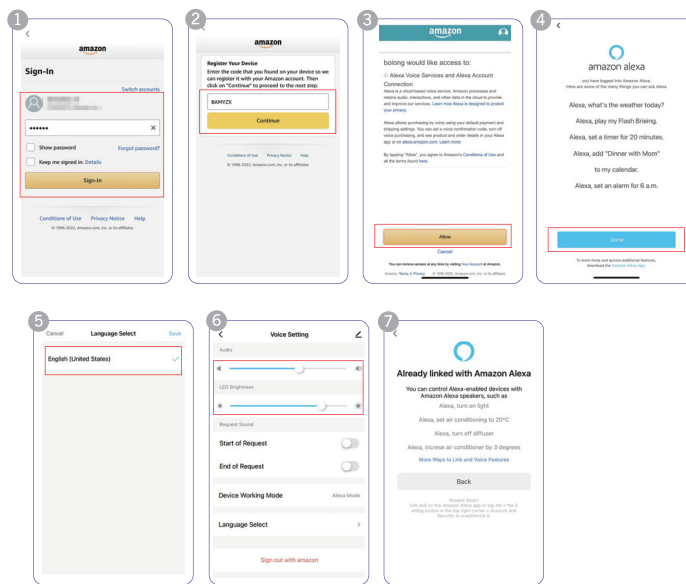


How to connect with Amazon Alexa:

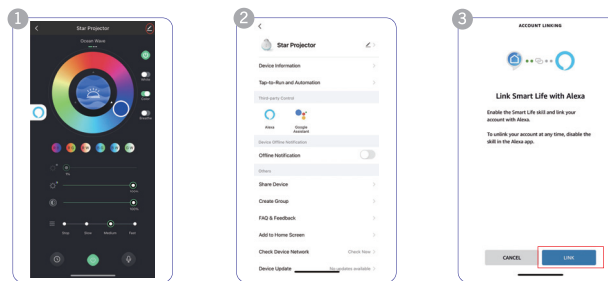
(1) Click "Alexa" icon to login a Amazon account.



(2) Please register a new Amazon account on first use. If registered, just log in to your account.



(3) Click "☰" icon at the top right-hand corner, the app shows the skill linking interface, select "Alexa" icon on the Third-party Control to link the Star Projector with the Alexa Skills.



(4) All settings are finished and now you can talk to the Star Projector to voice control your device.

Here are the Voice Commands on the Smart Life:

- Alexa, turn on Star Projector
- Alexa, turn off Star Projector
- Alexa, set Star Projector to 20 percent
- Alexa, brighten/increase Star Projector
- Alexa, dim/decrease Star Projector
- Alexa, set Star Projector to green

Smart Star Projector can control other devices that Work with Alexa, here are the voice commands:

- Alexa, turn on living room light
- Alexa, set living room light to blue
- Alexa, brighten/increase living room light
- Alexa, clean the bathroom

Ask Alexa to tell a joke, play music, answer questions, play the news, check the weather, set alarms, and more

- Alexa, play music
- Alexa, check the weather
- Alexa, what's the time now

Troubleshooting for Network Configuration

1. Verify the Wi-Fi password in the following ways:
Open the Wi-Fi list on your phone, click Wi-Fi name and ignore it, then reconnect and enter the password again to ensure connecting successfully. If not, please use the correct Wi-Fi password.
2. If your phone cannot show your home Wi-Fi, please check if the location information on your phone is enabled.
3. Please check if your phone is connected with 2.4GHz network. (other frequencies is not supported)
4. Please check the Wi-Fi name cannot contain Chinese, blank and special characters.
5. Please check the Wi-Fi password cannot be empty, it can up to a maximum of 58 characters and try to avoid using special characters.
6. In Wi-Fi connection, Please keep the product close to the network router at a distance of 5 meters.

Specifications:

Host Material	ABS
Input Rated Voltage	5V DC/DC Plug
Maximum Power/Working Current	15W/3.0A
Projection Light Source	LED bead
Projection Light Source Wavelength	Red light beads (620-625nm), green light beads (520-525nm), blue light beads (460-465nm), white light beads (color temperature 1500-15000k), green light wavelength (515nm)
Projection Distance	2-10M/6.56-32.80ft
Projection Area	The projection area is 80 m ² at a distance of 3M, and 150 m ² at a distance of 5M
Motor	Starting Voltage: 3V, with 1-2 r/min
Speaker Parameter	4Ω5W x 2
Input Power	100-240V AC 50/60Hz 0.8A

Volume- Adjustment	Short press "volume-" to decrease 5% volume, for voice control to decrease 10% volume, long press over 1s to continuously decrease volume, decreasing 5% per 250ms
Volume+ Adjustment	Short press "volume+" to increase 5% volume, for voice control to increase 10% volume, long press over 1s to continuously increase volume, increasing 5% per 250ms
Use and Maintenance	Indoor use, maintenance-free
Product Model	BL-E01
Product Dimension	ø150mm / H: 170mm
Operating Temperature	-20~50 C /-4~122°F
Storage Temperature	-20~60 C /-4~140°F
Wi-Fi	Support 2.4GHz WiFi network
FCC ID	2AXGMBL-E01

§ 15.19 Labelling requirements.

This device complies with part 15 of the FCC Rules. Operation is subject to the following two conditions: (1) This device may not cause harmful interference, and (2) this device must accept any interference received, including interference that may cause undesired operation.

§ 15.21 Information to user.

Any Changes or modifications not expressly approved by the party responsible for compliance could void the user's authority to operate the equipment.

§ 15.105 Information to the user.

Note: This equipment has been tested and found to comply with the limits for a Class B digital device, pursuant to part 15 of the FCC Rules. These limits are designed to provide reasonable protection against harmful interference in a residential installation. This equipment generates uses and can radiate radio frequency energy and, if not installed and used in accordance with the instructions, may cause harmful interference to radio communications. However, there is no guarantee that interference will not occur in a particular installation. If this equipment does cause harmful interference to radio or television reception, which can be determined by turning the equipment off and on, the user is encouraged to try to correct the interference by one or more of the following measures:

- Reorient or relocate the receiving antenna.
- Increase the separation between the equipment and receiver.
- Connect the equipment into an outlet on a circuit different from that to which the receiver is connected.
- Consult the dealer or an experienced radio/TV technician for help.

This equipment complies with FCC radiation exposure limits set forth for an uncontrolled environment. This equipment should be installed and operated with minimum distance 20cm between the radiator & your body.