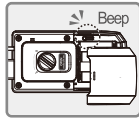


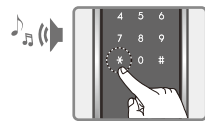
## Guest Pin Number Registration

- ① Open battery cover.  
Press [Registration] button once  
~beep sound will be heard.



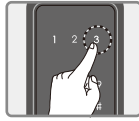
----- OUTSIDE -----

- ② Enter current pin number,  
followed by [\*] button.



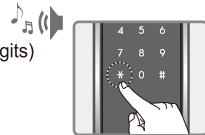
----- OUTSIDE -----

- ③ Press number [3] button.



----- OUTSIDE -----

- ④ Enter new guest pin number to be registered (4~12 digits)  
and press [\*] button to complete the registration.

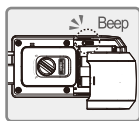


- ◆ The guest pin number is 1 time entry only.
- ◆ New registration will delete old guest pin number.
- ◆ When registration mode is cancelled old pin number will be restored.

## Dual-mode Security Feature Setting

※ The pin number & RFID card should be registered first before setting this feature.

- ① Press [Registration] button for 5 seconds  
the entire LED will light up after 3 seconds  
the alarm will stop and after 2 seconds  
it will be on again.



----- OUTSIDE -----

- ② Enter current pin number.  
When you press [\*] button,  
the front panel LED will blink and light-up.



7

----- OUTSIDE -----

- ③ Press [1] button to Turn-Off Dual-Mode Security.  
Press [3] button to Turn-On Dual-Mode Security.

During Dual-mode Security Setting,  
when the confirmation sound is heard,  
everything will be turned-off.



## Random Number Feature

**Note** ※ Random number feature is enabled in default.  
This is a security feature that keeps the pin number from being  
exposed by the additional random number that is added before  
or after the original pin number. The number to be entered  
including the pin number should not exceed 20 digits.

## Opening Door Outside

### Method 1 : Opening by pin number

- ① Touch the number pad.



----- OUTSIDE -----

- ② Enter [Pin number]  
and press [\*] button.



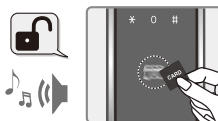
----- OUTSIDE -----

- ③ After the melody is heard,  
the door will open.

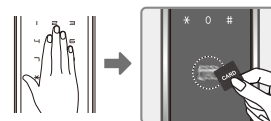


### Method 2 : Opening by RFID card

- ① During Automatic Detection Mode  
Press registered RFID card on reader.  
Melody will be heard and the door will open.



- ② During Manual Detection Mode  
Touch the number pad,  
check if the number pad lights up,  
place registered RFID card on the reader.  
Melody will be heard and the door will open.



8

### Method 3 : Opening by random number

Touch the number pad, enter any random number, Enter pin number,  
press [\*] button or enter pin number first, then enter any random number,  
then press [\*] button and the door will open.

- ① Enter any random number + Enter pin number + [\*] button.
  - ② Enter pin number + Enter any random number + [\*] button.
- Either way, when the melody is heard. The door will open.

### Method 4 : Opening by Dual-mode Security

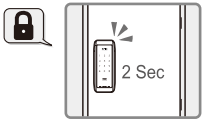
Enter Pin Number +  
Press [\*] button

+ Place the card to be  
registered on the card reader

## Closing Door Outside

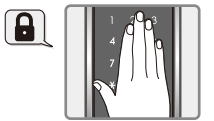
### Method 1 : Automatic lock mode

- ▶ The door will lock automatically  
after 2 seconds of closing the door.



### Method 2 : Manual lock mode

- ▶ Touch the number pad  
and the door will lock.



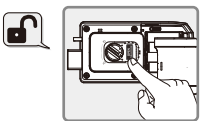
## Opening Door Inside

**Note** Press the [Open / Close] button inside.  
Within 7 seconds of opening the door  
or the door will lock again.



Press the [Open / Close] button or turn the manual lock knob

- ▶ While the door is closed  
press the [Open / Close] button  
or turn the manual lock knob, the door will open.



**Caution** Do not install on inside-pulling doors.

9

## Closing Door from Inside

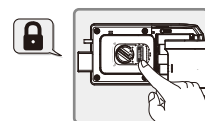
### Method 1 : Automatic lock mode

- ▶ The door will lock automatically  
after 2 seconds of closing the door.



### Method 2 : Manual lock mode

- ▶ While the door is closed  
press the [Open / Close] button  
or turn the manual lock knob, the door will lock.

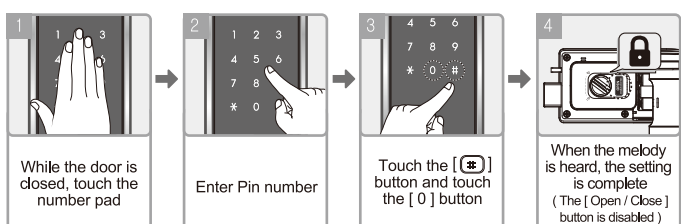


**Note** In manual mode, when the [Open / Close] button is pressed,  
the ~beep sound will be heard to signal that the door is locked.

## Forced-Lock Feature

### (1) Outside Force Lock

- When this is set the door cannot be opened from the inside.  
[Open / Close] button is disable.



**CANCEL**

Open the door by pin number and the [Force Lock] setting will be cancelled.

### (2) Internal Force Lock

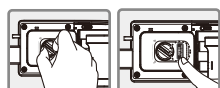
- When this is set the door cannot be opened from the outside.  
Pin number entry is disabled.

- ① While the door is closed.
- ② Press the [Open / Close] button for 3 seconds.  
When the melody is heard, the setting is complete.



**CANCEL**

Open the door by the [Manual Knob (lock / unlock)]  
or by the [Open / Close] button inside and  
the [Force Lock] will be cancelled.

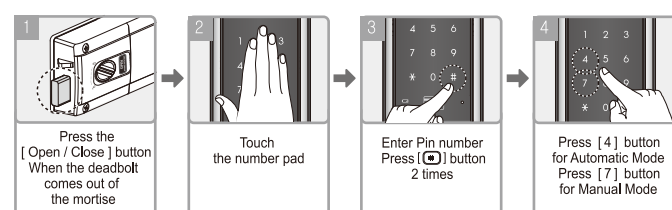


10

## Automatic / Manual Lock Setting

An optional feature that lets you set the lock in automatic and manual lock mode.

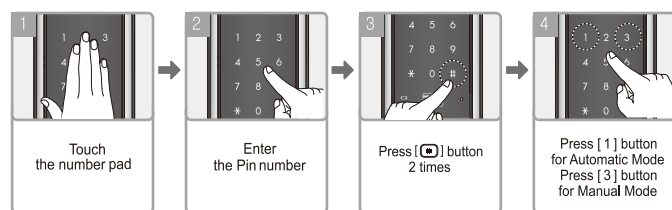
**Setting** While the door is partially opened.



**Note** Automatic Lock Mode is set in default. In Manual Lock Mode,  
the door will not lock after closing the door,  
instead touch the number pad outside or  
press the [Open / Close] button inside to lock the door.

## RFID Card Automatic / Manual Detection Setting

An optional feature that lets you set the RFID Card detection to automatic  
and manual mode.



**Note** ① In Automatic Mode,  
- Place the RFID Card on the card reader and the door will open.  
② In Manual Mode,  
- Touch the number pad,  
Place the RFID Card on the card reader and the door will open.  
※ Automatic Mode is enabled in default.

## Sound Mute Function

Regardless of the volume setting, This feature lets you mute the operation melody.  
This is per 1 time usage only. The operation sound will occur on next operation.

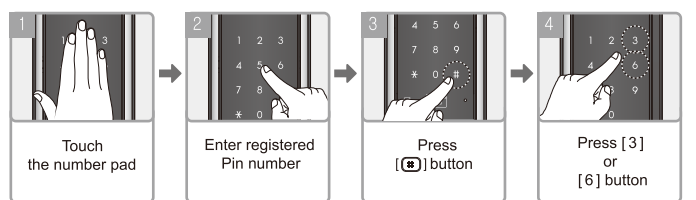
- ① Touch the number pad  
press the [\*] button. (In mute state)
- ② Enter Pin number, press [\*] button, door will open.  
(Number pad will blink)



11

## Sound Volume Setting

This feature allows the user to adjust the operation sound volume per level.  
(perform while door closed) ※ Sound can be adjusted up to 7 levels.



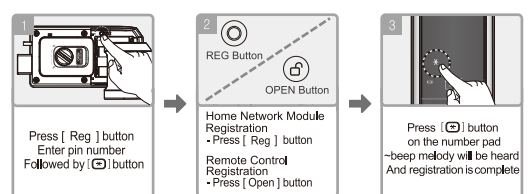
**Note** Press [3] button to increase sound.  
Press [6] button to decrease sound.  
In mute mode the number pad will blink, when you press a number.  
The volume level is set on high in default.

## Home Network Module & Remote Control Setting

This feature lets you open the door remotely via home network devices  
and remote control. (Optional)

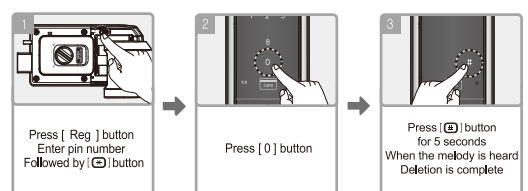
※ Home Network Module and Remote Control setting procedure is the same.

### Registration



**Note** For registration of additional remote control repeat step number 2  
Up to 5 remote controls can be registered.

### Deletion



**Note** New registration of single remote control will delete previously  
registered ones. This method can be used as alternative in deleting  
remote control.

12

NOTE: This equipment has been tested and found to comply with the limits for a Class B digital device, pursuant to part 15 of the FCC Rules. These limits are designed to provide reasonable protection against harmful interference in a residential installation. This equipment generates, uses and can radiate radio frequency energy and, if not installed and used in accordance with the instructions, may cause harmful interference to radio communications. However, there is no guarantee that interference will not occur in a particular installation. If this equipment does cause harmful interference to radio or television reception, which can be determined by turning the equipment off and on, the user is encouraged to try to correct the interference by one or more of the following measures:

- Reorient or relocate the receiving antenna.
- Increase the separation between the equipment and receiver.
- Connect the equipment into an outlet on a circuit different from that to which the receiver is connected.
- Consult the dealer or an experienced radio/TV technician for help